



Eagle HT



Serial #: 1UJCA0BR2R1BE0207
Model: 29RLC EAGLE HT FW

Model Year: 2024 Dealer Name: ZOOMERS RV OF ILLINOIS
3757 STATE HWY 148 NORTH
MULKEYTOWN, IL 62865
USA

Standard Equipment

THE FOLLOWING ITEMS ARE STANDARD ON THIS MODEL AT NO EXTRA CHARGE

- EXTERIOR**
- Stronghold VBL™ walls (laminated sidewalls, rear walls and slide out walls)
 - 5 in. Magnum Truss™ Roof System with Alpha roof membrane system with limited lifetime warranty
 - Climate Shield™ zero-degree tested weather protection:
 - Fully enclosed and heated underbelly (ducted)
 - 35,000 BTU furnace
 - Double layer fiberglass batt insulation in ceiling and floor
 - Double sided radiant barrier insulation (roof, floor, and behind cap)
 - PEX plumbing
 - HELIX Cooling System™ (industry exclusive):
 - Jayco exclusive insulated dual duct design
 - Directional and closeable A/C vents
 - Larger return air vents with user accessible filters
 - Automotive style painted front cap with max turn radius
 - Auto-grade vinyl graphics
 - LED exterior lighting package
 - 50-amp detachable power cord
 - Dual 30 lb. LP bottles
 - Metal slam latch baggage doors
 - Digital TV antenna with Wi-Fi prep
 - Dual channel exterior speaker
 - Nautilus 2.5 water connections
 - Quick connect water connections (door side hot/cold and off door side cold only)
 - Black tank flush
 - Independent satellite and whole coach cable hookups
 - Nitrogen filled undermount spare tire (15 in.)
 - LP quick connect for gas griddle (next to JayPort)
 - Slide topper/awning prep
 - 1.5 in fresh water drain valve
 - Commercial grade rubber flooring in pass through area
 - Factory installed roof ladder
 - Galvanized steel coated outside kitchens
- LUXURY PACKAGE (Mandatory)**
- Electric auto-leveling
 - GE 10 cu.ft. 12V refrigerator
 - Blackout roller shades with reflective side throughout
 - Residential style glass shower door
 - JayPort 2 in. mount (for outside accessories)
 - XL grab handle
- 4 STAR HANDLING PACKAGE (Mandatory)**
- Goodyear® Endurance® tires (load range E)
 - Dexter® Axles with Nev-R-Adjust® brakes and E-Z Lube® hubs
 - MORryde® CRE-3000™ rubberized suspension
 - Wet bolt fasteners, bronze bushings

- INTERIOR**
- Solid hardwood slide fascia
 - Handcrafted and glazed door/drawer fronts (new sizes)
 - 75 lb. full extension drawer guides
 - 5/8 in. tongue-and-groove plywood flooring
 - Residential vinyl flooring throughout
 - Tri-fold hide-a-bed sofa with residential memory foam sleep surface (select models)
 - Theater seating (select models)
 - Stainless steel kitchen sink
 - Matte black kitchen faucet with pull-out sprayer
 - USB charging ports (multiple locations throughout)
 - Extra 120V power outlets in kitchen and slide rooms (where applicable)
 - Gas-strutted under-bed storage
 - Inverter pre-wire (multiple locations)
 - C.P.A.P. prepped bedroom
 - Bathroom skylight
 - Porcelain foot flush toilet
 - 2 piece high gloss bathroom surround
 - Bedroom TV prep
- CUSTOMER VALUE PACKAGE (Mandatory)**
- 15K BTU "Whisper Quiet" A/C and bedroom A/C prep
 - 50-amp service with dual A/C ducts
 - Electric patio awning with integrated LED lights
 - 60K on-demand water heater with mixing tank
 - Custom machined aluminum rims
 - Rear 2 in. towing receiver with 4 pin connector
 - Keyed-Alike™ lock system (single key for all doors/locks)
 - Security monitor prep (rear)
 - Hidden hinges on cabinet doors
 - Upgraded friction hinge entrance door
 - 4K Ultra LED HD Smart TV in living room (50 in., 43 in., 39 in.)
 - GE black and stainless 17 in. range with edge to edge grates
 - GE microwave

Optional Equipment

OPTIONAL EQUIPMENT INSTALLED ON THIS VEHICLE BY MANUFACTURER

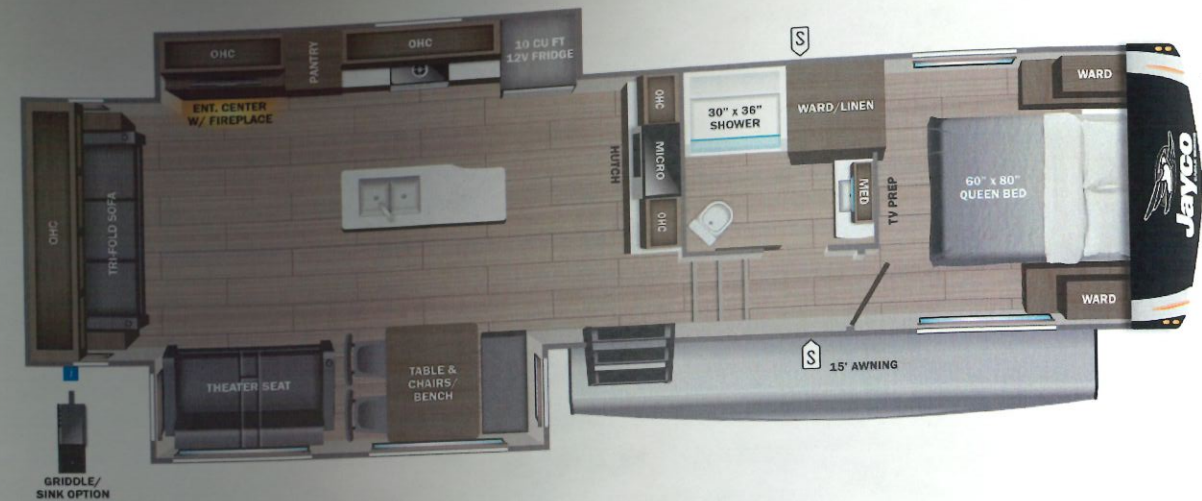
Base price	57,006.00
USA STANDARDS	n/c
CUSTOMER VALUE PACKAGE	6,263.00
LUXURY PACKAGE	7,493.00
FOUR STAR HANDLING PACKAGE	3,743.00
OVERLANDER I SOLAR PACKAGE	893.00
ROOF VENT IN BEDROOM	n/c
FIREPLACE	600.00
FREE STANDING TABLE & CHAIRS WITH BENCH SEAT	n/c

UNIT TOTAL **75,998.00**

DEALER INSTALLED OPTIONS

Manufacturer's Suggested Retail Price \$75,998.00

TOTAL AMOUNT DOES NOT INCLUDE STATE AND LOCAL TAXES OR LICENSE FEES. THE PRICE SHOWN ABOVE MAY OR MAY NOT BE REPRESENTATIVE OF THE ACTUAL SELLING PRICE OF SIMILAR RECREATIONAL VEHICLES IN YOUR AREA.



UVW
9426 lbs

Sleeps

Length
34' 1.25"

DIMENSIONS

Exterior height:.....158.00"
Exterior width:.....96.50"

WEIGHTS

GVWR:.....10750
GAWR (front):.....5145
GAWR (rear):.....5145
Approx. Gross Cargo Carrying Capacity(GCCC):.....1324

TIRES

Tire size (front):.....ST225/75R15E
Tire size (mid):.....
Tire size (rear):.....ST225/75R15E
Tire size (spare):.....ST225/75R15E

CAPACITIES

Fresh water tank (gals.):...52.00
Gray water tank (gals.):...82.00
Black water/toilet tank (gals.):.....45.00
Propane (lbs.):.....60
Propane (gals.):.....14
Water heater (gals.):.....0.25

SEATING & SLEEPING

Some dimensions may be rounded and may vary from the actual dimensions
Weights may be estimated calculations and may vary from the actual weight - refer to the vehicle weight labels for actual weights
Floorplans, features and specifications are subject to change without notice.

