



# White Hawk



Serial #: 1UJBK0BS7R14A0125  
 Model: 29BH WHITE HAWK TT

Model Year: 2024 Dealer Name: ZOOMERS RV OF INDIANA LLC  
 2503 E SR 524  
 WABASH, IN 46992  
 USA

**Manufacturer's Suggested Retail Price** \$67,338.00

TOTAL AMOUNT DOES NOT INCLUDE STATE AND LOCAL TAXES OR LICENSE FEES. THE PRICE SHOWN ABOVE MAY OR MAY NOT BE REPRESENTATIVE OF THE ACTUAL SELLING PRICE OF SIMILAR RECREATIONAL VEHICLES IN YOUR AREA.

## Standard Equipment

THE FOLLOWING ITEMS ARE STANDARD ON THIS MODEL AT NO EXTRA CHARGE

- EXTERIOR**
- Aerodynamic, rounded front profile with aluminum framing
  - Stronghold VBL™ walls with double-sided Azdel composite (sidewalls, rear walls and slide out boxes)
  - Magnum Truss™ Roof System with limited lifetime warranty
  - American-made frame with integrated A-frame
  - Swing-out entry door assist handle
  - Exterior TV bracket with 120V and cable hook-ups
  - Outdoor camp kitchen with galvanized steel bases (select models)
  - Slam latches on front pass-through storage doors
  - Marine grade exterior speakers with blue LED accent lighting
  - Galvanized steel and impact-resistant wheel wells
  - 30-amp service
  - Rock Solid Stabilizer System
  - Mounted camera bracket for pre-wired side and rear backup prep
  - Keyed-Alike™ lock system
  - Detachable power cord
  - Battery quick disconnect
  - Black tank flush
  - Automotive-style aluminum rims
  - Spare tire with cover
  - Inverter pre-wire (2 bedroom nightstand outlets, main TV and outlet for outside kitchen fridge)
  - Bumper-mount bracket for 17 in. griddle
  - 1.5 in. fresh water drain valve
  - 2 in. Stronghold VBL™ floor with 2 lb. density foam
  - Factory installed rear roof ladder
  - Modern graphics package with dual-colored sidewall
  - Outside shower (only on models without outside camp kitchen)
- LUXURY PACKAGE (Mandatory)**
- Climate Shield™ 0-100° tested weather insulation package
  - Front molded fiberglass cap with automotive-style windshield and blue LED accent light strips
  - Dark tinted, frameless safety glass windows
  - LCI Solid Step fold-down aluminum tread steps on main entry door
  - Overlander 1 Solar Package: (1) 200W solar panel and 30-amp digital controller
  - Kitchen skylight with shade
  - MAXXAIR® power roof vent (main living area)
  - Dual-hinge 10 cu. ft. 12V fridge

- INTERIOR**
- Barreled interior ceiling up to 81 in. of interior height
  - LED lighting throughout
  - Electric fireplace
  - Directional and closeable A/C vents
  - Plywood dinette, bed, bunk and shower/tub bases
  - Residential vinyl flooring throughout
  - High output auto-ignition LP gas furnace
  - Handcrafted, hardwood door/drawer fronts
  - Decorative backsplash
  - 75 lb. full extension drawer guides
  - 60 in. x 80 in. queen bed (60 in. x 75 in. in Murphy bed models)
  - 4 in. Teddy Bear soft-touch bunk mats (select models)
  - Powered roof vents in bathroom and main bedroom (most models)
  - Decorative roller shades with reflective backer
  - 4 in. high-density dinette cushions with vinyl backing
  - Bathroom skylight
  - Foldable, portable dinette table with solid steel base
  - Gas-strutted under bed storage (most models)
  - Hidden-hinged cabinet doors
  - Residential style kitchen countertops
  - Screwed and glued cabinet stiles
  - USB charging ports (multiple locations throughout)
- CUSTOMER VALUE PACKAGE (Mandatory)**
- American-made nitro-filled Goodyear® radial tires with self-adjusting brakes (made in the USA)
  - On-demand water heater
  - 55 gal. fresh water tank
  - 30 lb. LP gas bottles with auto-regulator and ABS cover
  - Power tongue jack
  - 39 or 50 in. Smart LED TV
  - 15,000 BTU roof-mounted A/C
  - AM/FM/Bluetooth® stereo with roof-mounted speakers
  - Oven with 3-burner recessed cooktop with glass cover
  - Microwave
  - Porcelain foot flush toilet
  - Showers with solid glass enclosures
  - Bathroom skylight
  - Max-length power awning with LED light

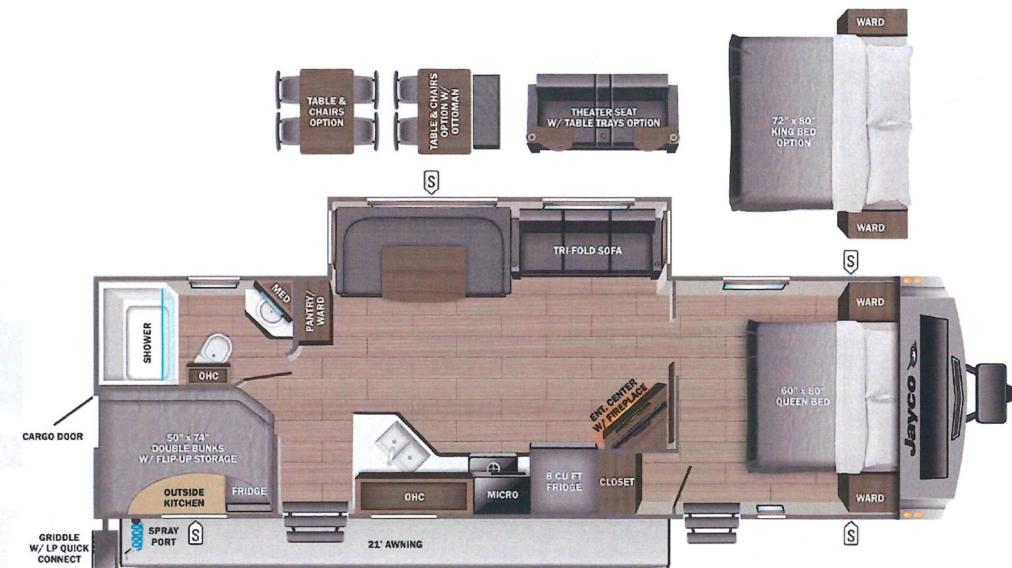
## Optional Equipment

OPTIONAL EQUIPMENT INSTALLED ON THIS VEHICLE BY MANUFACTURER

Base price	56,409.00
USA STANDARDS	n/c
CUSTOMER VALUE PACKAGE	6,000.00
LUXURY PACKAGE	3,000.00
OVERLANDER I SOLAR PACKAGE	n/c
NO JAYCOMMAND CONTROL SYSTEM	n/c
NO 2ND AC	n/c
50 AMP SERVICE	353.00
FIREPLACE	443.00
ELECTRIC STABILIZER JACKS	638.00
ROOF LADDER (STD)	n/c
THEATER SEATING W/TABLE TRAYS	495.00
DINETTE	n/c
QUEEN BED	n/c

UNIT TOTAL **67,338.00**

DEALER INSTALLED OPTIONS



**UVW**  
7118 lbs

**Sleeps**

**Length**  
34' 8.63"

### DIMENSIONS

Exterior height:.....134.75"

Exterior width:.....96.00"

### WEIGHTS

GVWR:.....8500

GAWR (front):.....4400

GAWR (rear):.....4400

Approx. Gross Cargo Carrying Capacity (GCCC):.....1382

### TIRES

Tire size (front):.....ST225/75R15E

Tire size (mid):.....

Tire size (rear):.....ST225/75R15E

Tire size (spare):.....ST225/75R15E

### CAPACITIES

Fresh water tank (gals.):...55.00

Gray water tank (gals.):...61.00

Black water/toilet tank (gals.):.....30.50

Propane (lbs.):.....60

Propane (gals.):.....14

Water heater (gals.):.....0.25

### SEATING & SLEEPING

\*\*\*Some dimensions may be rounded and may vary from the actual dimensions\*\*\*  
 \*\*\*Weights may be estimated calculations and may vary from the actual weight - refer to the vehicle weight labels for actual weights\*\*\*  
 Floorplans, features and specifications are subject to change without notice.

