

# Outback

*Super-Lite*

2010

FIFTH WHEELS AND TRAVEL TRAILERS

Get more. *Tow light.*





*Outback 270BH kitchen allows for an incredible amount of storage space.*

## Get more. *Tow light.*

The all new Outback offers you more style, more features and more comforts in a light weight, easy to tow travel trailer. With deeper 36" flush-floor slide out rooms you enjoy more living area and a larger dinette. Oversized windows bring the outdoors in and brighten your day. Expanded countertops, larger overhead storage, and more pantry space allow you to stock well for expanded trips. New Butter Rum Cream and Auburn Cherry cabinets add a level of sophistication unheard of in other light weight trailers. See for yourself how this new Outback moves lightweight RV camping to a higher level.



Swivel TV



Air Bed Sofa Sleeper



The entertainment center with revolving 20-inch LCD TV, CD/DVD player and AM/FM is the focal point of this living area. Shown Outback 270 BH in Russet.



Decors



Russet



Havana

## *It's what you can see...*

Whether you're watching the big game, listening to your favorite music or cooking your next meal, you can do it all right underneath your awning. Outback features an Outside Camp Theatre that includes an LCD TV that can be mounted on a clip provided underneath the awning. The Outside Camp Kitchen, provided on most Outbacks, includes a 2-burner cook top, hot and cold water faucet, 20' water hose, cutting board and towel bar. Also, for your use are exterior speakers, exterior security lights and a 110 volt outlet.



## *King Bed Rear Slide*



*... and can't see that*

The hard wall rear slide out king bed adds additional living space without towing length. When it's time to hit the road you'll find superior towability and maneuverability.







Outback's heated underbelly encloses tanks and valves, helping to extend the camping season.



Outback utilizes light weight, long lasting, aluminum framed construction with a patented one-piece galvanized steel roof truss.



All Outback's are made with I-Beam chassis and full size outriggers. Pretreated in an 11 step process prior to painting ensures more rust resistance than our competitor's chassis.



## Durable Construction

### ROOF

- 1 Seamless One-Piece EPDM Rubber Roof
- 2 3/8" Fully Walkable Wood Decking
- 3 R-14 Blanket Insulation
- 4 5" Radius Galvanized Steel Roof Trusses, 16" on Center
- 5 Full Length Drip Rail

### SIDEWALL

- 6 Gel-Coated Fiberglass Exterior
- 7 1/8" Luan Wall Backing
- 8 R-9 Solid Block Foam Insulation
- 9 1 1/2" Box Welded Aluminum Frame Walls
- 10 Interior Decorative Wall Board
- 11 Aerodynamic Filon Front Radius
- 12 Diamond Plate Stone Guard

### FLOOR

- 13 Residential Grade Stain Resistant Carpet & Linoleum
- 14 Carpet Pad
- 15 Double Layer Luan Decking w/ Staggered Seams
- 16 Block Foam Insulation
- 17 Welded Aluminum Floor Joists
- 18 Bottom Layer Luan Decking
- 19 Darco Vapor Barrier Wrap
- 20 One Piece, Polypropylene Enclosed and Heated Underbelly
- 21 In Floor Residential Ducted Heat

### CHASSIS

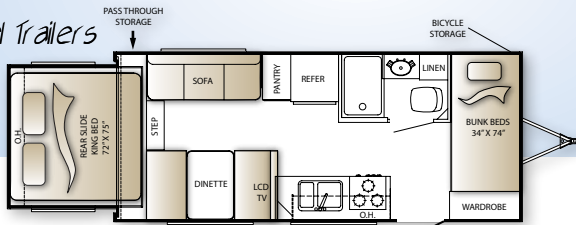
- 22 6" Powder Coated Steel I-Beam Frame
- 23 Leaf Spring Suspension System
- 24 EZ Lube Axles with 10" Electric Brakes
- 25 15" Radial Tires
- 26 3-Step Entry Mounted to I-Beam Frame
- 27 Step Light

counts the most.

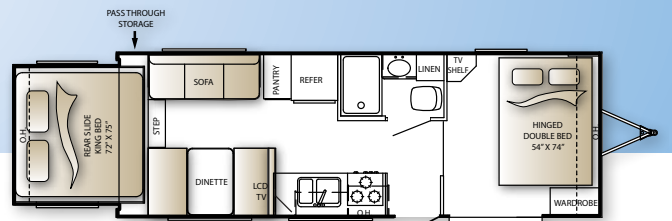


Outback's aerodynamic exterior design, with its streamlined front cap, radius corners, and enclosed underbelly, substantially reduces air turbulence, increasing stability and mileage during travel.

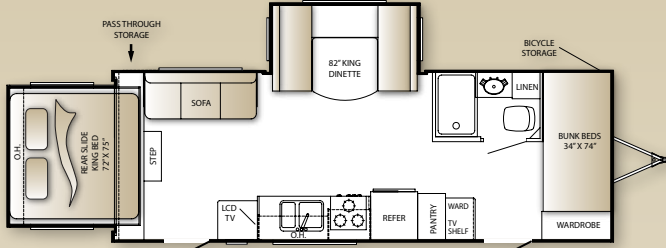
Travel Trailers



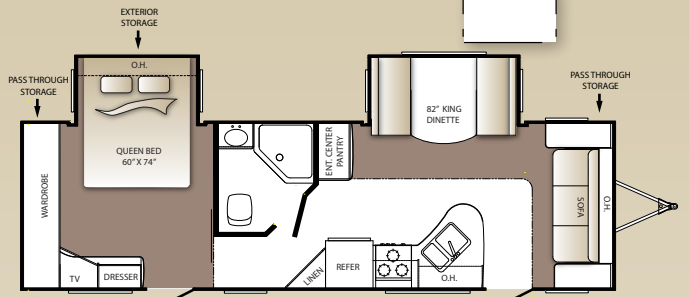
210RS



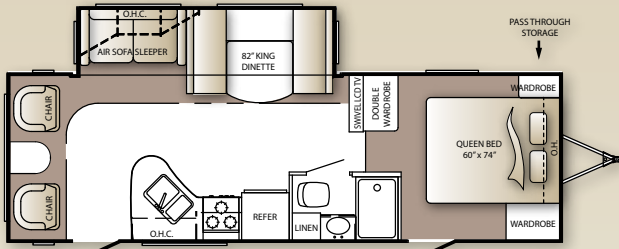
230RS



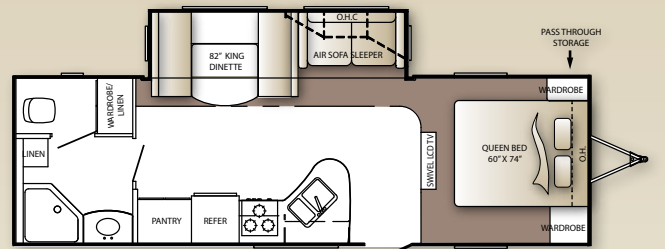
250RS



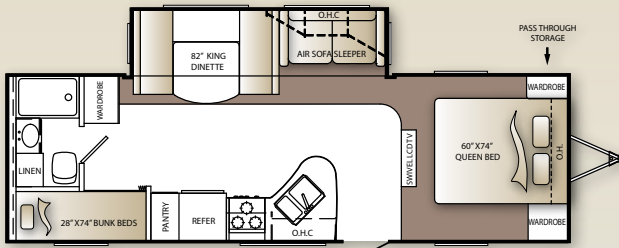
260FL



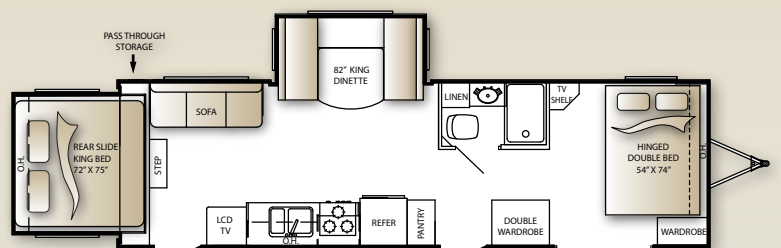
268RL



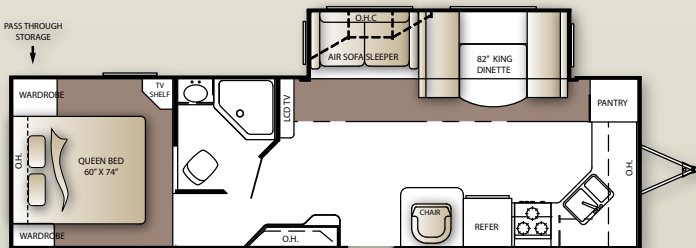
269RB



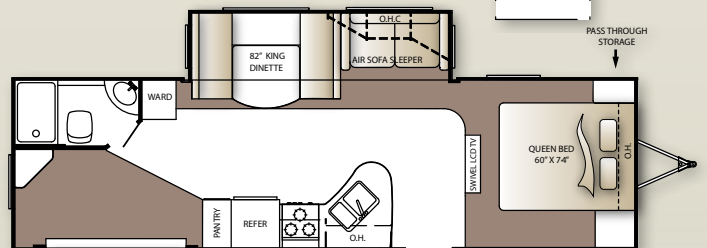
210BH



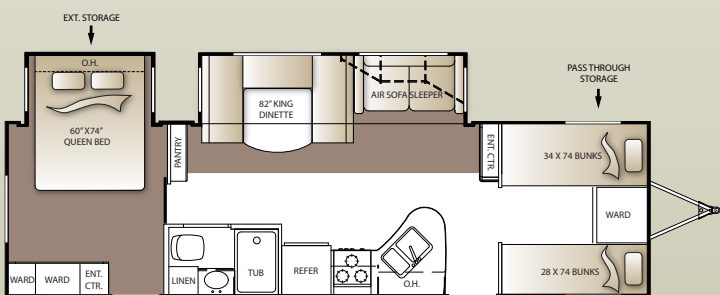
280RS



286FK



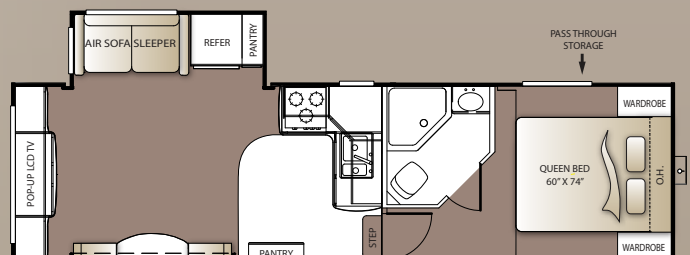
300BH



6 | OUTBACK

301BQ

Fifth Wheels



282FE





# Outback KARGOROO

by Keystone

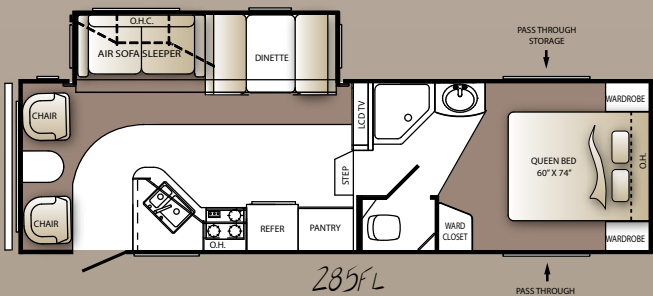
You can take it all in a Kargaroo! The Outback Kargaroo offers a huge cargo space complete with a hinged aluminum framed double bed, wardrobe and TV hookup.



Travel Trailers

Fifth wheels

	210RS	230RS	250RS	260FL	268RL	269RB	270BH	280RS	286FK	300BH	30BQ	282FE	285FL
Shipping Weight	4845	5390	5765	6445	6050	6025	6065	6585	6135	6715	6990	TBA	6950
Carrying Capacity	2705	2160	1785	1295	1750	1775	1735	1915	1765	1440	1210	TBA	2550
Hitch Weight	545	520	540	785	695	730	695	575	1165	685	630	TBA	1440
Exterior Length	23' 2"	27' 3"	27' 9"	31' 9"	29' 10"	30' 10"	30' 4"	32' 1"	32' 11"	32' 8"	33' 6"	30'	30' 2"
Exterior Width	96"	96"	96"	96"	96"	96"	96"	96"	96"	96"	96"	96"	96"
Ext. Height - A/C top	10' 11"	10' 11"	10' 11"	10' 11"	10' 11"	10' 11"	10' 11"	10' 11"	10' 11"	10' 11"	10' 11"	12' 2"	12' 2"
Awning	14'	19'	15'	19'	16'	16'	16'	15'	16'	16'	19'	11'	14'



Tank Capacities

LP Capacity	60 lbs.
Fresh Water	50 gal.
Grey Water	30 gal.*
Waste Water	30 gal.

R-values

Roof	R-14
Floor	R-14
Wall	R-9

\*270BH, 280RS, 285FL, 286FK, 300BH 60 gal. Grey tank

## Standards

### Living Area

- Rich residential cherry hardwood cabinetry with a touch of butter rum cream thermofoil raised panel doors
- King U-shape dinette (most models)
- 36" flush floor slides
- Large panoramic windows
- Pre-drilled and screwed cabinetry
- Custom designed box valance with lambrequins
- Linoleum flooring
- Large wood side drawers with steel guides
- Water, soil stain resistant fabrics
- Large overhead cabinets
- Residential air bed sleeper sofa (most models)\*
- 20" LCD HDTV\*
- Pleated shades\*
- Decorative wall lights\*
- Air bed sofa sleeper (most models)

### Kitchen

- 60/40 deep sink with 3" drains
- Trash can storage\*
- Two door 6 cu. ft. refrigerator
- High-rise faucet
- Monitor panel
- Utensil tray
- 3 burner range with oven\*
- Microwave

### Bedroom

- Deluxe innerspring mattress
- TV hook-up
- Jalousie windows for maximum ventilation
- Residential bedspread
- Deluxe headboard
- His and her lights
- Bedroom speakers
- Night stand

### Bathroom

- Power roof vent
- Skylight over tub
- Porcelain foot flush toilet
- Laundry hamper
- Tub surround\*
- Garden shower (269RB, 286FK)
- Deluxe medicine cabinet
- Large linen closet (most models)

### Appliances

- AM/FM/CD stereo with DVD player and MP3 hookup (N/A 210, 230, 250, 280)
- Two door 6 cu. ft. refrigerator
- 3 burner range with oven\*



286RL in Russet

- Six gallon gas/electric DSI water heater by pass with 16.2 gallons per hour "quick recovery"\*
- 13,500 BTU AC wall thermostat
- 30,000 BTU furnace
- Microwave

### Exterior Standards

- Black framed tinted jalousie safety glass windows
- Black tank flush
- Extra large baggage doors, 1" thick with continuous hinge and rubber D-seal
- Assist entry grab handle
- Extended drip caps and full length drip rail
- Two security lights (one on each side)\*
- Porch light
- Hitch light
- Step light
- Weather encapsulated body trim
- Exterior 120V receptacle
- Heated enclosed underbelly including tanks and valves
- LP tank cover
- Automotive style fender skirts
- Double welded dual battery brackets
- Exterior TV mount with cable hook up
- Front diamond plate rockguard
- Satellite prep
- Exterior speakers
- Easy lube axles
- Outside camp kitchen\*
- Exterior quick connect LP hook-up
- Stabilizer Jacks (4) TT (2) FW

### Walls – Construction

- 1 1/2" welded aluminum walls with R9 insulation
- Solid block foam insulation

### Roof

- 5" galvanized steel tapered truss on 16" centers
- 3/8" roof decking
- One-piece EPMD rubber roof
- R14 blanket insulation

### Floor

- 2" welded aluminum laminated floor
- R14 blanket insulation
- Wrapped vapor barrier
- Polypropylene enclosed heated underbelly encloses tanks and valves

### Chassis

- Leaf spring equalizing suspension system
- Powder coated I-beam
- EZ lube axles
- 10"- electric brakes
- 15" radial tires\*
- 15" spare tire, carrier & cover\*
- Aluminum rims

### Utilities

- 55-amp converter
- 30 lbs. LP bottles with auto changeover
- TV antenna with booster, cable TV
- 30-amp shore power line
- LP leak detector
- Smoke detector
- Carbon monoxide detector\*
- Fire extinguisher
- Tinted safety glass windows
- Break-away switch
- Safety chains (TT only)
- Manual slide backup on all electric slide outs

## Options

- Designer Package
- Comfort Package
- Carbon monoxide detector
- Tub surround
- Outside camp kitchen
- RVIA
- Radial Tires
- 15" spare tire, carrier, and cover
- 6 gal. gas/electric DSI water heater by pass with 16.2 quick recovery
- Stabilizer jacks (4) TT (2) FW
- 2 Security lights at each side
- Oven
- Air bed sofa sleeper
- 20" LCD HDTV campsite theatre
- Aluminum rims

### Outback Designer Package\*

- Wall border
- Cloth shower curtain (most models)
- Laundry hamper
- Oil rubbed bronze coat hooks (most models)
- Utensil rack
- Sofa bolsters
- Innerspring mattress
- Bedspread
- LP cover
- Raised panel refrigerator
- Pleated shades
- Decorative wall lights
- Trash can

### Outback Comfort Package\*

- 13,500 BTU ducted AC
- TV antenna/cable
- Patio Awning
- AM/FM/CD stereo with MP3 hookup
- Awning
- Outback air vent
- Microwave

\* Denotes STD Build Options

# Outback



www.keystone-outback.com

2642 Hackberry Dr. | Goshen, IN 46526

574.535.2100

June 09

Product information is as accurate as possible as of the date of publication of this brochure. Features, floor plans, and specifications are subject to change without notice. Please also consult Keystone's web site at keystoneRV.com for more current product information and specifications. Tow Vehicle Disclaimer: CAUTION: Owners of Keystone recreational vehicles are solely responsible for the selection and proper use of tow vehicles. All customers should consult with a motor vehicle manufacturer or their dealer concerning the purchase and use of suitable tow vehicles for Keystone products. Keystone disclaims any liability or damages suffered as a result of the selection, operation, use or misuse of a tow vehicle. KEYSTONE'S LIMITED WARRANTY DOES NOT COVER DAMAGE TO THE RECREATIONAL VEHICLE OR THE TOW VEHICLE AS A RESULT OF THE SELECTION, OPERATION, USE OR MISUSE OF THE TOW VEHICLE. June 2009