

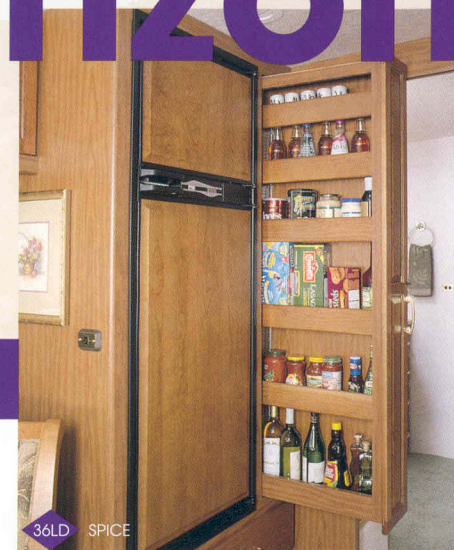
ITASCA
HORIZON



2 0 0 1



Itasca Horizon



A spacious double-door Norcold® refrigerator/freezer with icemaker is complemented nicely by a slide-out pantry with adjustable shelves for storing your non-perishables. A four-door Norcold refrigerator is also available.



You will appreciate the standard rearview monitor system when backing and maneuvering. For added convenience, the in-dash electronic compass also incorporates an outdoor thermometer.

For 2001, the Horizon line-up has been expanded to include three innovative floorplans. Other upgrades include the addition of a more powerful 330hp Caterpillar® engine and an Allison 3000MH six-speed transmission. High-performance attributes extend to the interior of the coach as well, where you'll find standard dual-glazed, thermo-insulated windows, Flexsteel® furniture, and **TRUEAIR**™; Winnebago Industries' exclusive residential style central air conditioning system. With the A/C unit located in the basement, rather than on the roof, TrueAir provides better air filtration, reduces clearance height and is easier to service. For maximum electrical system performance, each model also features the **POWERLINE**™ Energy Management System, a "smart" system designed to manage energy use throughout the coach.

How do you select the right diesel pusher motor home? There are, after all, many coaches from which to choose. However, if you want the very latest advances in design and technology, the list narrows considerably. If you demand superior warranty coverage, your choices narrow even more. And if you desire the extras Itasca motor homes are known to offer, your list is narrowed down to one — the 2001 Itasca® Horizon™.

Winnebago Industries' attention-to-detail extends to items like the cabinet doors and drawers, where you'll find large 4" handles for easy opening and heavy-duty guides with a positive locking feature to keep drawers properly secured when traveling.



Each Horizon model includes a private bath area. Amenities include solid surface countertops, easy-cleaning ceramic-look vinyl tile, a wall-mounted hair dryer with night-light, neo-angled shower with single-control faucet, and a residential-height porcelain toilet.

Itasca's bus-style, front-entry-door, diesel pusher motor home.



36CD BIG SKY

The new 36CD floorplan features a comfortable banquette style sofa and an innovative flat-floor slideout room in the lounge area. Also new for 2001, the Horizon features a cream-colored dash that complements other furnishings like the handsome woodwork (including the beautiful curved wood cabinet face accenting the standard 25" TV), premium fabrics, carpeting and floorcoverings.



36LD SPICE

The rear slideout greatly increases bedroom floorspace and the spacious wardrobe is lined with cedar on both ends. The Serta® queen-size mattress accepts standard bedding. New features include a standard 19" TV with remote housed in a handsome wood cabinet.



36LD

The galley's standard features are anything but standard. They include solid surface countertops, ceramic-look vinyl floor tile, Moen® faucet with pull-out sprayer, Everpure® water purification system with separate faucet, Magic Chef® sealed burner range top, microwave/convection oven with range fan, and a new wood-framed fluorescent galley ceiling light.



36LD SPICE

The easily expandable dining table and two free-standing chairs in the 2001 Horizon enhance your dining pleasure.



Monitoring the operating systems on your Horizon is easy with the **ONEPLACE**® Systems Center. OnePlace brings all of your important control panels, switches and indicators to a central location for convenient access.



The available washer/dryer offers a convenience of home and tucks neatly away when not in use.

The available Sound System Deluxe w/Q® Surround Sound comes with a 25" stereo TV, stereo VCR, amplifier, five cube speakers and two sub-woofers.



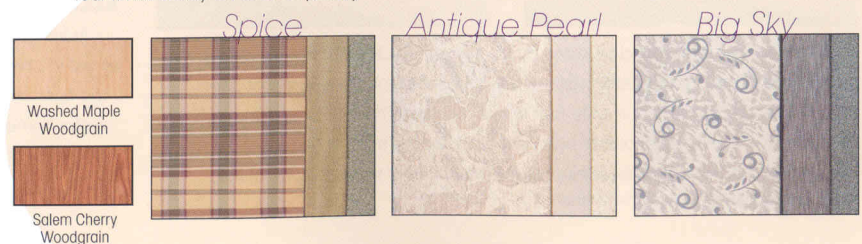
Fall asleep to your favorite music with the available rear stereo system. An alarm clock and convenient phone jack are also included.



36LD

ITASCA HORIZON DECOR OPTIONS

To assure their strength and durability, fabrics selected for use in the Itasca Horizon must pass a series of rigorous tests. Just one example is the "double rub" test, which mechanically simulates a person getting in and out of a seat up to 30,000 times. (This equates to nearly four times a day for over 20 years!)



What sets a Winnebago Industries motor home apart? You've already seen that we offer more on the inside. But our advantages are much more than simply increased interior comfort. From our smooth, one-piece fiberglass Thermo-Panel® exterior (which you can see), to the welded steel **SUPER STRUCTURE** our motor homes are built on (which you can't see), and from the fit and finish of our storage compartments (which you can see), to the one-of-a-kind joints that secure our walls to the floor and ceiling (which you can't see), our motor homes are simply built to a higher standard. A standard we've been improving on for more than forty years.



Horizon sets itself apart with its beautiful high-gloss exterior featuring Dupont Imron® automotive finishes (choose between Lavendar Frost Metallic or Light Silver Metallic), frameless, insulated flat panel compartment doors, and large 22.5" wheels, shown here with available stylized aluminum wheels.



ITASCA'S fiberglass roof



COMPETITOR'S rubber roof

Unlike the rubber roofs found on some motor homes, which suffer from chalking, tearing, discoloration and deterioration, Horizon's one-piece fiberglass roof offers much more strength and durability. Built with our proven Thermo-Panel construction, it features a crowned exterior that easily sheds water. We're so confident of our roof's integrity, we back it with a 10-year limited parts and labor warranty, one of the longest in the industry.

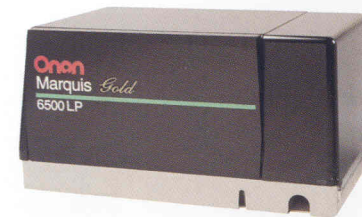
The awning rail does more than support the standard awning.

Its integrated gutter also serves to channel water to the front and rear of the motor home, away from the face of the awning.



36LD

Smooth panel compartment doors are fully insulated and feature gas spring supports and single-paddle latches for easy access to Horizon's large pass-through storage bays. The front slideout features Winnebago Industries' revolutionary **STOREMORE**® Hydraulic Slideout System which allows interior and exterior storage compartments to extend with the slideroom. For easy loading and unloading, lights are located within the StoreMore storage compartments.



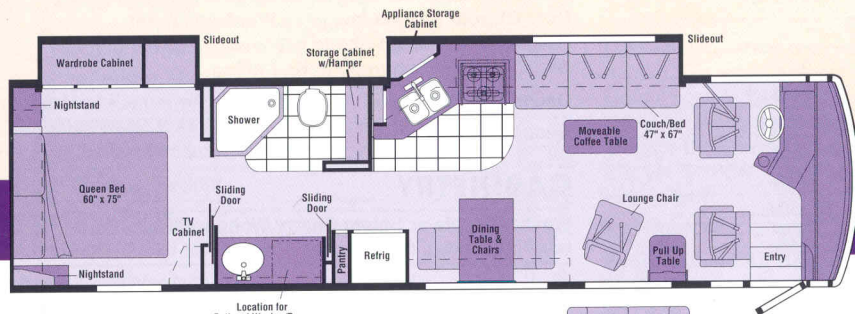
Choose from the standard 6,500 watt LP Onan® Marquis Gold™ generator or the available 7,500 watt Onan Quiet Diesel™ generator. (50 amp electrical system required with 7,500 watt generator.)



The Horizon is satellite system ready. The available satellite dish antenna is equipped with an elevation sensing unit that triggers a dash-mounted indicator light.

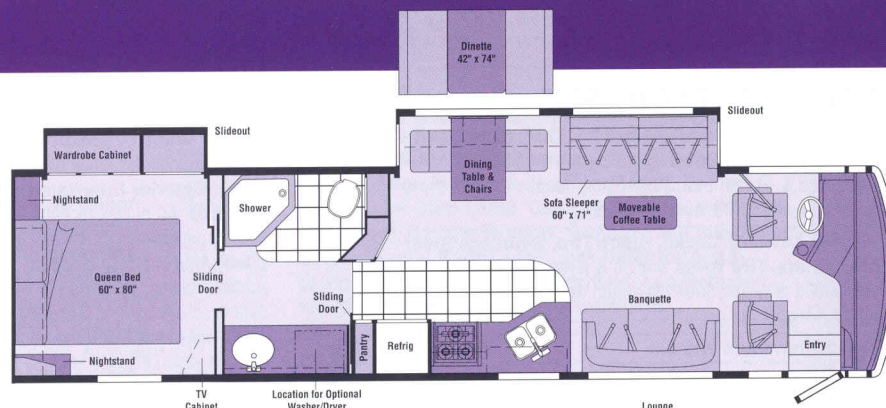
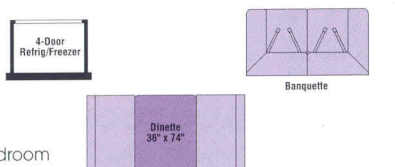
2001

Itasca Horizon Floorplans



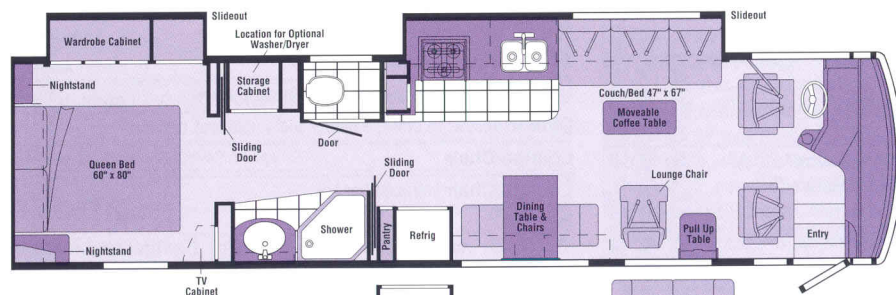
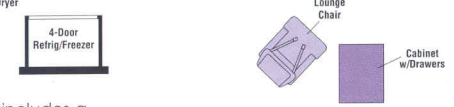
34BD

This 34' floorplan features an angled galley/couch **STOREMORE** slideout, bedroom wardrobe slideout, lounge chair and table, and standard dining table and chairs. Includes a large, walk-through bath design.



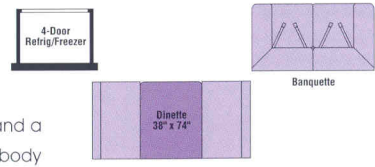
New 36CD

This exciting new floorplan includes a **STOREMORE** flat-floor front slideroom, and a large 3-cushion banquette in the living area. The bathroom includes an extra-large countertop.



36LD

With a galley/couch **STOREMORE** slideout and a bedroom wardrobe slideout, this 36' wide-body provides excellent livability. A moveable coffee table in the living area and a private toilet are just part of what makes this Horizon feel like home.



Seat Belts



Vinyl Tile Floorcovering

Note: Dimensions shown are for sleeping space only and dashed lines denote overhead storage areas.

2001 Horizon Specifications

	34BD	36CD	36LD
Length	34'9"	36'5"	36'5"
Exterior Height*	12'1"	12'1"	12'1"
Exterior Width^	8'5.5"	8'5.5"	8'5.5"
Exterior Storage	82 cu. ft.	130 cu. ft.	124 cu. ft.
Interior Height	6'8"	6'8"	6'8"
Interior Width	8'0.5"	8'0.5"	8'0.5"
Fresh Water Capacity w/Heater*	96 gal.	96 gal.	96 gal.
Holding Tank Capacity - Black/Gray	48/52 gal.	48/52 gal.	48/52 gal.
LP Capacity◇	39 gal.	39 gal.	39 gal.
Fuel Capacity	90 gal.	90 gal.	90 gal.
GVWR	26,350 lbs.	26,350 lbs.	26,350 lbs.
Wheelbase	208"	228"	228"

AUTOMOTIVE/CHASSIS

	34BD	36CD	36LD
Chassis - Freightliner® Pusher 7.2L, 330hp Caterpillar diesel, rear radiator, Allison 6-speed electronic 3000MH transmission & I-beam front suspension, Jacobs exhaust brake, air brakes, 4-wheel ABS, air suspension	\$	\$	\$
Hydraulic Leveling Jacks, Spare Tire, Stainless Steel Wheel Liners, Tire Tools wrench & leverage bar, Trailer Hitch 5000# draw bar/500# maximum vertical tongue weight & wiring	\$	\$	\$
Stylized Aluminum Wheels	0	0	0

CAB AREA & DRIVER CONVENIENCES

	34BD	36CD	36LD
Cab Seats w/Seat Belts 3-point shoulder w/adjustable D-loop & lap w/retractors, armrests, lumbar support (manual, driver seat), multi-adjustable swivel/slide/recline, fabric covered, Center Console Cabinet, Cigarette Lighter/12 Volt Electrical Supply, Cruise Control, Defroster Fans (2) auxiliary 2-speed, Electronic Compass w/Outdoor Thermometer, Hood Release, Intermittent Windshield Wipers, Light Filtering Shades cab windows, Map Light(s), Power Assist Steering w/Tilt Wheel, Rearview Monitor System w/single camera & 1-way audio, Sony® Rubber Driver Floor Mat, Sunvisors (2), Window (Driver) full slider w/screen, dual-glazed	\$	\$	\$
Cab Seats UltraLeather HP™	0	0	0
Cab Seat Pedestal* 6-way power assist, driver & passenger seats	0	0	0
Cab Seat Pedestal* 6-way power assist, driver seat	0	0	0
Cab Seat (Passenger) w/footrest	0	0	0

ENTERTAINMENT

	34BD	36CD	36LD
19" AC Color TV (Bedroom), 25" AC Color TV (Front), CB Prep includes: antenna, antenna lead, 12 volt power supply, Exterior Entertainment Center w/Cassette DC receptacle, AC duplex receptacle, AM/FM radio, TV jack, radio antenna, speakers (2), table, lockable compartment, Radio (Cab) AM/FM stereo cassette, Sony, roof-mounted flexible rubber antenna, speakers (4), Radio Power Switch main/auxiliary battery, Satellite System Ready, TV Enhancement Package cable inputs, coax wiring & interior antenna jacks, exterior antenna jack, antenna reminder light, telephone input & interior jacks (2), VCR w/remote, Video Selection System	\$	\$	\$
Compact Multi-disc Changer Sony	0	0	0
Exterior Entertainment Center w/CD Player DC receptacle, AC duplex receptacle, AM/FM radio, TV jack, radio antenna, speakers (2), table, lockable compartment	0	0	0
Radio (Cab) AM/FM stereo CD, Sony	0	0	0
Satellite Dish Antenna RV digital, digital elevation sensing unit	0	0	0
Sound System Deluxe w/Q Surround Sound* 25" AC stereo color TV, stereo VCR, amplifier, cube speakers (5), sub-woofers (2)	0	0	0
Stereo System (Bedroom)* AM/FM cassette, alarm clock	0	0	0
Stereo System (Bedroom)* AM/FM CD, alarm clock	0	0	0

INTERIOR

	34BD	36CD	36LD
Accessory Package rechargeable flashlight, rechargeable vacuum cleaner, Ceiling Lights fluorescent lights, recessed, galley, dinette, lounge w/wall switches, Ceiling Lights incandescent w/wall switches, Cupholder(s); Day/Night Pleated Shades w/Blackout, Decorative Wall Lamp, Dual-Glazed/ Thermo-Insulated Windows, Front Wraparound Pleated Shade w/Wands, Stepwell Light w/interior switch, Textured Fabric Ceiling	\$	\$	\$
Decorative Picture	\$	\$	
Decorative Wall Mirror		\$	

CABINETRY

	34BD	36CD	36LD
Washed Maple or Salem Cherry Woodgrain stile-and-rail construction raised panel inserts	\$	\$	\$

COUNTERTOPS

	34BD	36CD	36LD
Solid Surface Countertops galley & bath, Laminate w/solid wood edge, dinette & bedroom	\$	\$	\$

FLOORCOVERING

	34BD	36CD	36LD
Carpeting w/Pad, Vinyl Tile Floorcovering galley & bath	\$	\$	\$

FURNITURE

	34BD	36CD	36LD
Coffee Table, Dining Table & Chairs folding chairs (2), free-standing chairs (2)	\$	\$	\$
Banquette w/throw pillows	0	\$	0
Banquette UltraLeather HP w/throw pillows	0	0	0
Couch w/throw pillows	\$		\$
Couch UltraLeather HP w/throw pillows	0		0
Sofa/Sleeper w/throw pillows			\$
Sofa/Sleeper UltraLeather HP w/throw pillows			0
Dinette access to storage below seats, slideout drawers	0	0	0
Lounge Chair	\$	0	\$
Lounge Chair UltraLeather HP	0	0	0

GALLEY

	34BD	36CD	36LD
Coffeemaker, Double Stainless Steel Sink w/sink covers (countertop material), Fluorescent Ceiling Light decorative wood frame, Fluorescent Under Cabinet Light , Microwave/Convection Oven w/Range Fan residential 30", Sharp®, Powered Ventilator Fan , Range Cover flush-mounted (countertop material), Range Top 3-burner w/storage below, recessed, sealed burners, Magic Chef, Refrigerator/Freezer large double-door w/icemaker, Norcold, Single-control Faucet w/Pull-out Sprayer, Slideout Pantry* Spice Rack, Wall Mirror, Wastepaper Basket, Water Purification System Everpure	\$	\$	\$
Appliance Storage Cabinet	\$		
Decorative Wall Border		\$	\$
Glass Partition forward end of countertop	\$	\$	
Range 3-burner w/large oven, glass door, sealed burners, Magic Chef	0	0	0
Refrigerator/Freezer 4-door w/icemaker, Norcold	0	0	0
Utility Tray tip-out	\$	\$	

BATH

	34BD	36CD	36LD
Hair Dryer wall-mounted w/night-light, Lavatory Cabinet, Magazine Rack, Makeup Lights, Medicine Cabinet, Oval Sink, Porcelain Toilet w/Foot Pedal Flush, Power Roof Vent, Shower, Shower Door textured glass, Shower Light, Single-control Lavatory Faucet, Single-control Shower Faucet w/Fixed Shower Head* Skylight, Tissue Holder, Towel Bar, Towel Ring(s)	\$	\$	\$
3-Rod Towel Rack mounted to door			\$
Hamper tip-out	\$		
Linen Cabinet		\$	\$
Robe Hook			\$
Shower Package hand-held shower head, fold-down shower seat	0	0	0
Wall Mirror frameless w/beveled edge	\$		

BEDROOM

	34BD	36CD	36LD
Alarm Clock* Bedspread, Pillow Shams, Throw Pillow, DC Receptacle, Decorative 3-Section Backwall Mirror, Decorative Wall Lamps, Fabric Headboard, Queen-size Serta Innerspring Mattress access to storage below, Nonpowered Roof Vent, Reading Lights, Wainscoting w/Chair Rail, Wardrobe Cabinet carpeted floor, cedar lined, clothes rod, drawers, light	\$	\$	\$
Powered Ventilator Fan	0	0	0

EXTERIOR

	34BD	36CD	36LD
AC Duplex Receptacle, Awning* patio, Awning Rails w/rain gutter, Entrance Door main w/screen door, Tri/Mark KeyOne™ System deadbolt lock, stepwell cover panel, Fog Lamps, Graphics Package Lavendar Frost Metallic recommended w/Spice & Antique Pearl Or Light Silver Metallic recommended w/Big Sky or Antique Pearl, Ladder, Locking Fuel-fill Door, Mirrors low mount, electric remote w/defrost, Porch Light w/interior switch, Rear Mudflaps, Service Light driver side, Sidewall Skin 1-piece fiberglass, smooth, high-gloss, Single-door Step electric w/door jamb switch, Storage Compartments smooth valance panels, trunk liner, gas cylinders, Tri/Mark KeyOne System, lights, Under Hood Light	\$	\$	\$
Full-width Mud Guard*	0	0	0
Roof-mounted Air Horns	0	0	0
Undercoating	0	0	0

SYSTEMS

	34BD	36CD	36LD
1 1/2" Water Tank Drain, 10' Sewer Hose, 10 Gallon Electronic Ignition Water Heater, 10 Watt Solar Panel/Battery Charger, 12 Volt Auxiliary Receptacle, 30 Amp Power Cord, AC/DC Electrical Distribution System AC & DC breaker panels, 55 amp converter/charger, Accumulator Tank, Automatic Dual Battery Charge Control, Automotive Heater/Air Conditioner, Auxiliary Start Circuit, City Water Hookup, Coach Batteries* (2) deep cycle, Coach Battery Disconnect System, Exterior Wash Station, Furnace 40,000 BTU, Suburban, low profile, Generator* 6,500 watt, Onan Marquis Gold, LP, Generator Prep Kit, Heated Holding Tank Compartment, Holding Tank Flushing System black tank only, Inverter* DC/AC, 300 watt, LP Tank permanent mount w/gauge, ONEPLACE Systems Center wall mount, battery digital voltmeter, PowerLine energy management display, generator hourmeter gauge, generator start/stop switch, holding tank levels, LP tank level, solar panel/battery charger light, water heater switch, water heater on light & pilot indicator light, water pump switch, water tank level, POWERLINE Energy Management System, Service Center (Drainage) drainage valves, holding tank flushing system, sewer hose, Service Center (Electrical/Water) cable inputs, city water hookup/tank diverter fill, drain for fresh water system, exterior wash station w/pump switch, paper towel holder, power cord, shoreline/generator automatic changeover switch, soap bottle holder, telephone input, Shoreline/Generator Automatic Changeover Switch, TRUEAIR Central Air Conditioning System, Washer/Dryer Prep, Water Heater Winterization Bypass Valve, Water Pump demand, Water System Winterizing Valve manual, Water Tank Fill pressurized city hookup w/diverter valve, Water Tank Fill w/Locking Door	\$	\$	\$

	34BD	36CD	36LD
50 Amp Power Cord Superflex cord	0	0	0
Central Air Heat Pump	0	0	0
Generator* 7,500 watt, Onan Quiet Diesel	0	0	0
Inverter/Charger* DC/AC, 1500 watt w/remote panel, Heart Interface®	0	0	0
Washer/Dryer Combination	0	0	0
Water System Winterizing Kit automatic	0	0	0

SLIDEOUT

	34BD	36CD	36LD
Slideout Room (sofa/dining table 36CD w/flat-floor slideout, couch/galley 34BD, 36LD), slideroom cover (slideout section), STOREMORE , Slideout Room (rear driver side), wardrobe	\$	\$	\$

SAFETY

	34BD	36CD	36LD
3-Point Cab Seat Belts, 10 B.C. Fire Extinguisher, Acrylic Exterior Assist Handle w/Logo, Bumpers front & rear, Carbon Monoxide Detector/Alarm, Center High-mount Stop Lamp, Courtesy Light(s) w/Wall Switch(es), Escape Window, Ground Fault Interrupter, Interior Assist Bar(s), LPG Leak Detector/Alarm, Laminated Safety Glass Windshield, Lap Belts In Selected Areas, Smoke Detector/Alarm	\$	\$	\$

WARRANTY

	34BD	36CD	36LD
12-Month/15,000-Mile Basic Warranty, 36-Month/36,000-Mile Warranty On Structure**, 10-Year Limited Parts & Labor Warranty On Roof	\$	\$	\$

- The height of each model is based on the curb weight of a typically equipped unit on the standard chassis. The actual height of your vehicle may vary by as much as 2" depending on chassis or equipment variations.
- ^ Horizon floorplans feature a wide-body design — over 96". In making your purchase decision, you should be aware that some states restrict access on some or all state roads to 96" in body width. Before making your purchase decision, you should confirm the road usage laws in the states of interest to you.
- * Not all items available in combination. See dealer for details.
- ◇ Capacities shown are tank manufacturer's listed water capacity (W.C.). Actual filled LP capacity is 80% of listing due to overfilling prevention device on tank.
- S Standard
- O Optional
- ** See your dealer for complete warranty documentation information.

Winnebago Industries' continuing program of product improvement makes specifications, equipment, model availability and prices subject to change without notice. Comparisons to other motor homes are based on the most recent information available.

Itasca Horizon

A Few More Details



WIT Club



Membership in the Winnebago Itasca Travelers (WIT) Club is a great way to meet people and get even more enjoyment from your motor home. As an owner of a Winnebago Industries RV, you can join the Club and take advantage of some great services — like professional travel planning and mail forwarding — and participate in some great rallies and caravans. Call 1-800-643-4892 ext. 1 for more information.

TripSaver

In a recent RVDA survey, Winnebago Industries was voted number one in the industry for service, parts, and warranty support by dealers across the country. And who would know better than the people who service motor homes? We believe a large part of our service success is due to our commitment to getting you back on the road as soon as possible after experiencing a mechanical emergency. That's why we created TripSaver. This industry-leading program guarantees that qualifying, in-stock emergency warranty repair parts will be shipped directly from the factory within 24 hours. Furthermore, a Winnebago Industries built part or component that is not in stock will be specially manufactured and shipped air freight.



TRIPSaver
Emergency-Shipped Parts

Warranty Protection

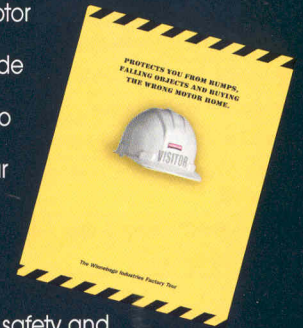
All new Itasca motor homes include a 12-month/15,000-mile basic protection plan, 36-month/36,000-mile warranty protection on lamination and slideroom construction and assemblies, and a standard 10-year limited parts and labor warranty on the roof. As if those aren't enough, we also stand behind most major appliances and equipment we install (a rarity in the industry) so you can count on the convenience of one-stop service for warranty repairs. It all adds up to some of the most comprehensive warranty programs in the industry backed by the most recognized motor home manufacturer in the world.



Visit us at
www.winnebagoind.com

Read this guide.

To learn more about what separates our motor homes from others, ask for this free guide next time you visit your Winnebago Industries dealer. It explains our superior manufacturing process. Use it to learn more about important safety and quality considerations as you shop for the motor home that's best for you.



For Sales and Service Information Contact:



©2000 Winnebago Industries, Inc., Forest City, IA 50436

Printed in USA

Seat belts are your most important hookup. Always buckle up.