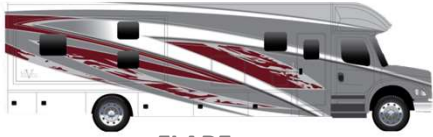


CLASS SUPER C - DIESEL 2025 VERONA



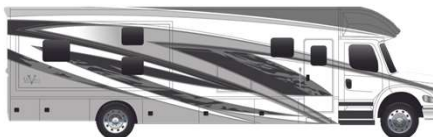
FLARE



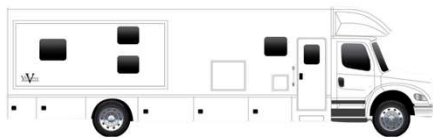
KINETIC



SURGE



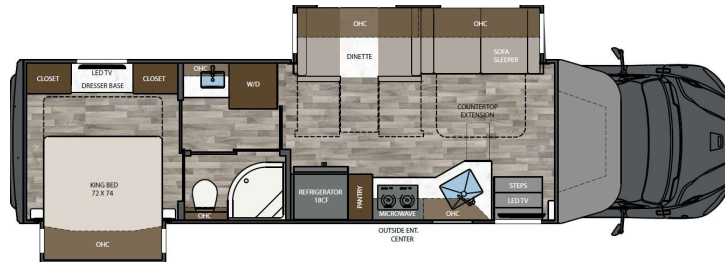
PROPULSION



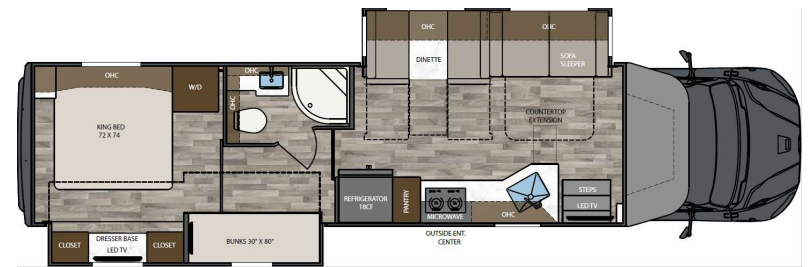
TUNDRA



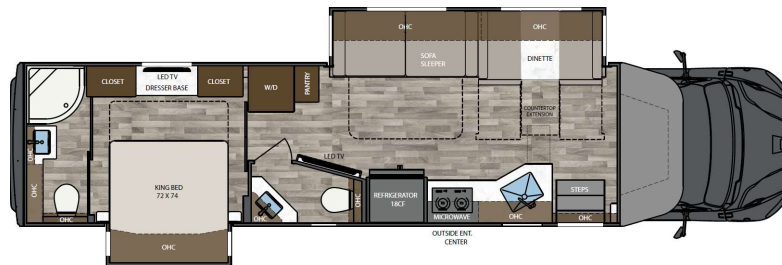
POLARIS



36VSB



40VBH



40VRB



40VTS



Exterior height **12' 10"**
Exterior width **99 1/4"**
Exterior length **36' 8" - 39' 10"**

Interior height **84"**
Interior width **95 1/2"**
Fuel capacity **100 Gallons**

Fresh water capacity **150 Gallons**
Gray water capacity **75 Gallons**
Black water capacity **75 Gallons**

CLASS SUPER C - DIESEL

2025 VERONA: SPECIFICATIONS

CAB/CHASSIS

Freightliner® M2-106 Plus
 Cummins® L9 Engine with 360HP, 1150 lb. ft. torque
 37,600 lbs GVWR
 Allison® 3200TRV electronic 6-speed transmission
 20,000 lbs towing capacity
 Dual 50-gallon aluminum fuel tanks (100-gallon total capacity)
 6-gallon DEF tank
 4-wheel disc brakes
 Polished aluminum wheels with center caps
 Airliner® Rear air suspension
 Auto drain valve for Air brake reservoirs
 Garmin® touch screen, Bluetooth, GPS, RV maps, and color camera monitor
 Rear and side view cameras
 Upgraded cab sound system (JBL® 5.25" dash & 6.5" ceiling speakers)
 Premium Freightliner® sound and thermal insulation package
 LED headlight assemblies
 Power windows and door locks
 Power/heated remote-control mirrors
 Air ride driver and passenger seat pedestals with swivels
 Soft touch driver/passenger seats with armrests
 Full cab mat
 Auxiliary air chuck and hose
 Freightliner® Safety Assurance Package:

- Lane Guidance
- Electronic Stability Control
- Collision Mitigation

EXTERIOR

Aerodynamic fiberglass front and rear caps, transition, and cab steps
 Four-point hydraulic leveling system with app
 Exterior entry door assist handle
 Powered folding double entry steps
 (6) Colorway Paint Options
 Girard® GG lateral arm electric awning with LED lights
 Slide Toppers with covers
 Frameless dual-pane tinted windows with screens
 Side-swing aluminum compartment doors with single handle paddle latches and double catch
 Steel storage compartments with carpeted lining
 Diamond Shield® Nano-Fusion™ Paint Protection (Front Mask)

CONSTRUCTION

2" vacuum bond laminated sidewalls with welded aluminum framing
 Welded aluminum roof truss system with framed cutouts
 One-piece crowned fiberglass roof surface
 "Super Sandwich" floor construction with composite underbelly includes:

- 2" welded steel floor joist system mounted to 3" steel longitudinal floor beams
- 3/4" fir plywood deck over 2 x 4 wood-framed residential floor with thermal and sound deadening insulation

PLUMBING SYSTEMS

150 Gallon Fresh Water Tank
 75 Gallon Gray Tank
 75 Gallon Black Tank
 See-Level® Tank Monitoring system
 Full Maintenance Wet Bay

- Black tank flush system
- Fresh water fill – city water hookup
- Outside faucet with sprayer

On demand water pump
 Whole house water filtration system

INTERIOR

(3) Interior décor options
 Décor coordinating fabric valances
 Double roller day/night shades (Manual)
 Decorative wallboard with coordinating accent in slideouts
 High-grade LVP flooring throughout
 Maple hardwood cabinetry
 2-wood stain color options
 Dovetail drawers on soft closing slides
 Framed doors on hidden hinges
 Pantry
 Hardwood slide fascia
 Satin nickel door hardware
 Satin nickel kitchen faucet
 Solid surface countertops throughout
 Rectangular single bowl undermount kitchen sink with cover
 Grouted tile backsplash
 Butcher block countertop extension
 LED dimmable lighting
 Memory foam mattress
 Ultra soft touch vinyl furniture upholstery
 Convertible booth dinette with storage
 Sofa Sleeper, Tri-fold
 Aerocap with storage cabinet

BATH

Maple hardwood vanity, medicine, and linen storage cabinets
 LED Vanity light
 Deluxe satin nickel bath faucet and adjustable showerhead
 Satin nickel towel bar, towel ring, and toilet paper holder
 Porcelain macerator toilet with push button flush
 Solid surface countertop with integrated sink
 Wavy patterned fiberglass shower with glass door
 Skylight over shower

APPLIANCES

18 cu. ft. French door residential refer with stainless steel doors
 Recessed 2-burner induction cooktop with polished solid surface covers
 1.7 cu. ft. stainless steel convection microwave oven
 Aqua-Hot® 250D Hydronic Water and Zone Heating System
 (2) 15,000 BTU roof A/C with heat pumps and plumbed condensation lines
 Ducted air conditioning
 MaxxAir® Power Vents
 Pre-wired and plumbed for optional washer/dryer
 Carbon monoxide, LP and smoke detectors, and fire extinguisher

ELECTRICAL SYSTEMS

8KW Onan® quiet diesel generator
 Automatic generator start system
 50-Amp electrical panel
 3,000W true sine wave inverter
 Transfer switch with surge protection
 330Ah AGM house battery
 Solar charging system pre-wire
 Multiplex control system with Bluetooth app control
 USB/USB-C charging in living area, bedroom, kitchen, and bunk areas
 50-Amp power retractable shore cord reel
 12V holding tank heaters, gray and black tanks

ENTERTAINMENT SYSTEMS

43" 4K Smart LED TV in living area, mounted on articulating swing arm
 Soundbar home theater with Bluetooth streaming and wireless subwoofer in living area
 32" 4K Smart LED TV in the bedroom
 Exterior entertainment center

- 32" Smart LED TV on swivel
- Soundbar with Bluetooth streaming
- USB charging

Winegard® Connect 2.0 rooftop OTA antenna with Wi-Fi and 4G ready (SIM Card req.)
 Prewire for Winegard® Trav'ler stationary HD satellite system

POPULAR OPTIONS

Reclining Theatre Seat ILO Standard Sofa
 Cabover bunk with window, power shade, and 24" Smart LED TV
 Winegard® In-motion satellite system
 Winegard® HD Satellite Trav'ler Pro
 600W Solar Panel System (3 @ 200W)
 (3) 100Ah Lithium batteries ILO AGM Batteries
 American Racing Wheels® Upgrade
 Caliber 9® Grille Package (available in Chrome or Black)
 Full-width rock guard mudflap
 Washer and Dryer Stack