

T
R
A
V
E
L

T
R
A
I
L
E
R
S

PROUDLY
Millersburg Made
SINCE 1974



ROCKWOOD
BY FOREST RIVER

MINI LITE FLOORPLANS

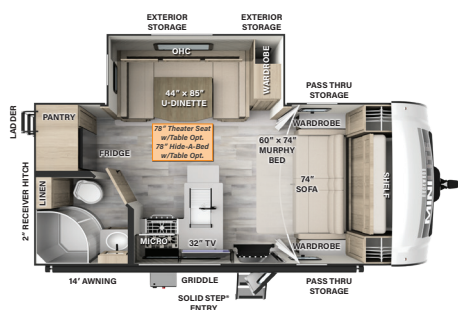


POWER PACKAGE

Includes:*

- 460Ah Lithium-Ion Battery
- 3kW Inverter-charger
- 5" Touchscreen
- 160A Charge Capacity
- (5) 200W GoPower® Solar Panels
- Integrated 60A MPPT Charge Controller
- Centralized System Disconnect Switch
- 13,500 BTU A/C w/Soft Start Technology

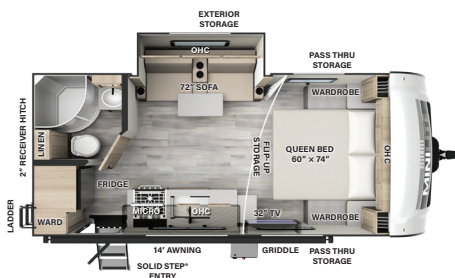
*Power Package available in Select Mini Lite Models Only. Look for the  Icon Next to the Floorplan.



2104S

LENGTH: 22' 4" WIDTH: 8' HEIGHT: 10' 11" HITCH: 681 AXLE: 4237

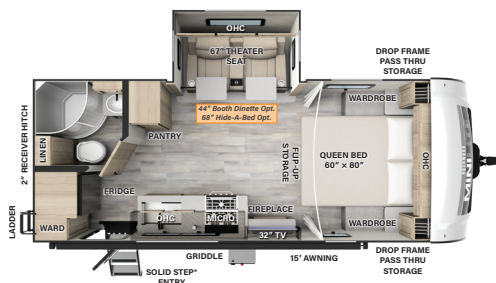
UWW: 4977 CCC: 1864 **F** 54 GAL **G** 30 GAL **B** 30 GAL



2109S

LENGTH: 22' 4" WIDTH: 8' HEIGHT: 10' 3" HITCH: 557 AXLE: 3877

UWW: 4493 CCC: 1344 **F** 54 GAL **G** 30 GAL **B** 30 GAL



2205S

LENGTH: 23' 10" WIDTH: 8' HEIGHT: 10' 11" HITCH: 634 AXLE: 4439

UWW: 5132 CCC: 1662 **F** 54 GAL **G** 30 GAL **B** 30 GAL

Construction

SUPERIOR CONSTRUCTION

1. Complete **Composite** Wall Construction
2. Fully Laminated Walkable Roof
3. 6-Sided Full-Aluminum Frame
4. Aluminum Truss Roof Bracing
5. 5/8" Tongue & Groove Plywood Floor
6. Aluminum Floor Joists
7. Frameless Windows
8. Painted Fiberglass Front Cap w/Clear Coat¹
9. Automotive Glass Windshield

STANDARD FEATURES

10. 200W Solar Panel with 1800W Inverter & 30 AMP Charge Controller
11. Back-Up Camera Prep
12. Maxxair Fan with Cover
13. Winegard Air 360+ Prepped for Wi-Fi
14. Key-Alike Lock System
15. Slam Baggage Doors
16. Sport Tire and Wheel Package
17. PSX2 Power Stabilizers²
18. Additional Solar Prep
19. Double Battery Boxes
20. Double 30 Lb. LP Tanks

SAFETY STANDARDS

21. Nitrogen-Filled Goodyear Endurance Tires w/ TST Tire Pressure Monitor System
22. Dexter® Torflex® Axles
23. MORryde Strut Assist Steps³

CLIMATE PROTECTION PACKAGE

24. 12V Thermostat-Controlled Heated Tanks
25. Radiant Foil In Front Cap

Optional Features

26. Power Package (N/A 2109S, 2506S, 2516S)⁴
27. Additional 200W Solar Panel

1 Ultra Lite Only; Mini Lite comes with a fiberglass front cap. 2 Ultra Lite Only; Optional on Mini Lite.
3 N/A Mini Lite 2109S 4 Mini Lite Only.

Slide Options

Model	Theater Seat	Hide-A-Bed	Table & Chairs	Booth Dinette	King Bed
Mini Lite Travel Trailers					
2104S	✓	✓		Standard U-Dinette	
2109S					
2205S	Standard	✓		✓	
2506S	✓	✓		Standard U-Dinette	
2509S	✓	✓		Standard U-Dinette	
2511S	Standard	✓		✓	
2513S	Standard	✓		✓	
2515S	Standard	✓		Standard	
2516S	Standard	✓			
2517S	✓	✓		Standard	
2518S	Standard	✓			
Ultra Lite Travel Trailers					
2606WS	Standard	✓	✓	Standard	
2608BS	Standard	✓	✓	Standard	
2614BS	Standard	✓	✓	Standard	
2616BH	Standard	✓			
2706WS	Standard	✓	✓	Standard U-Dinette	
2720IK	Standard	✓	✓	Standard	✓
2906BS	Standard	Standard	✓	Standard	✓
2908RL	Standard	Standard			
2911BS	Standard	✓	✓	Standard U-Dinette	

ROCKWOOD MINILITE ULTRA LITE

Rockwood's Mini Lite and Ultra Lite provide one of the best values in the lightweight travel trailer market. Both models are built with superior build quality that exceed Rockwood's reputation.



Customer Assurance Inspection (CAI)

CAI is our offline PDI facility where all units are run through rigorous testing protocols to ensure Rockwood's quality standards are exceeded. We strive to provide a quality RV we're proud of and would camp in ourselves.

In 2023, our CAI facility moved to a new 16,950 FT² location in Millersburg to combine Quality, Engineering, Design, and Marketing in one location.

WeRV App Control

Your RV is equipped with Lippert™ One Control®. This WiFi app-based interface provides comfort and convenience to control and monitor your RV's functions. Visit lippert.com/onecontrol for a complete list of capabilities.



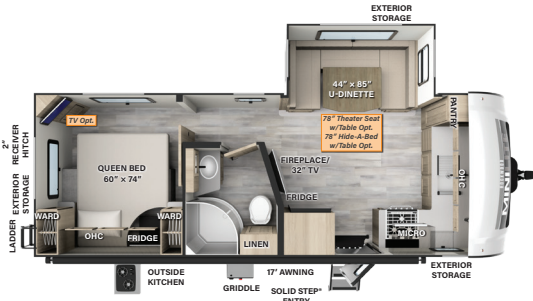
Download Today!



Apple and App Store are registered trademarks of Apple Inc. Google Play and the Google Play logo are trademarks of Google LLC.

ROCKWOOD

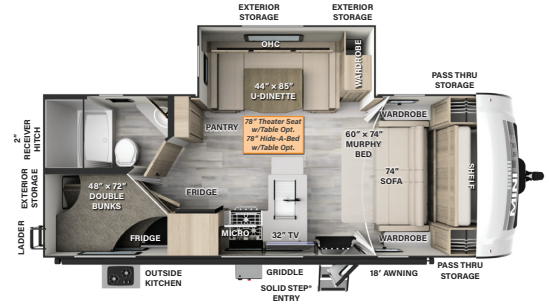
MINI LITE FLOORPLANS



2506S

LENGTH: 25' 11" WIDTH: 8' HEIGHT: 10' 11" HITCH: 724 AXLE: 4768

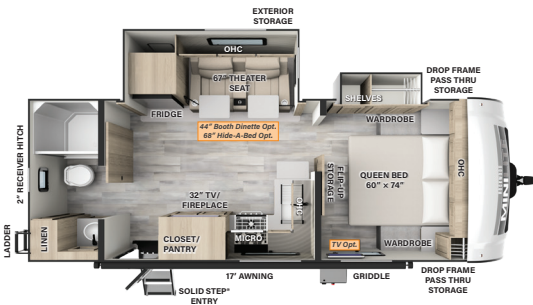
UWW: 5551 CCC: 1333 **F** 54 GAL **G** 60 GAL **B** 30 GAL



2509S

LENGTH: 25' 11" WIDTH: 8' HEIGHT: 10' 11" HITCH: 773 AXLE: 4667

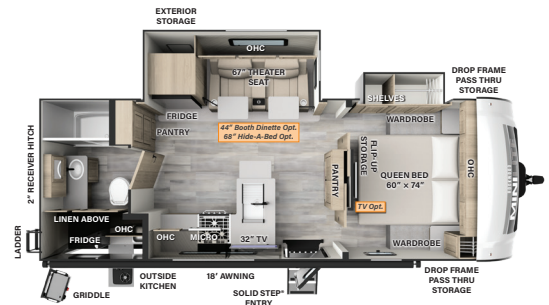
UWW: 5499 CCC: 1434 **F** 54 GAL **G** 30 GAL **B** 30 GAL



2511S

LENGTH: 25' 10" WIDTH: 8' HEIGHT: 10' 11" HITCH: 697 AXLE: 5000

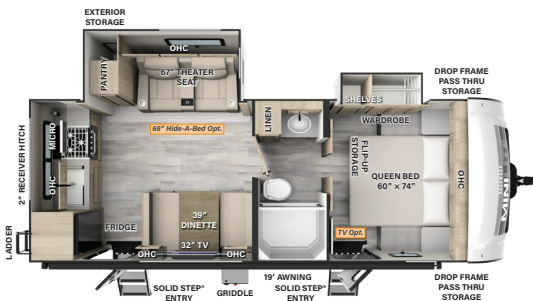
UWW: 5756 CCC: 1941 **F** 54 GAL **G** 60 GAL **B** 30 GAL



2513S

LENGTH: 25' 10" WIDTH: 8' HEIGHT: 10' 11" HITCH: 660 AXLE: 5252

UWW: 5971 CCC: 1689 **F** 54 GAL **G** 30 GAL **B** 30 GAL



NEW!
2515S

LENGTH: 25' 10" WIDTH: 8' HEIGHT: 10' 11" HITCH: 681 AXLE: 5112

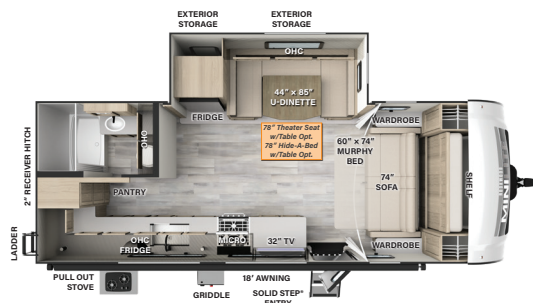
UWW: 5852 CCC: 1829 **F** 54 GAL **G** 60 GAL **B** 30 GAL



2516S

LENGTH: 25' 11" WIDTH: 8' HEIGHT: 10' 11" HITCH: 778 AXLE: 5340

UWW: 6177 CCC: 1601 **F** 54 GAL **G** 60 GAL **B** 30 GAL



NEW!
2517S

LENGTH: 25' 11" WIDTH: 8' HEIGHT: 10' 11" HITCH: 615 AXLE: 5100

UWW: 5774 CCC: 1841 **F** 54 GAL **G** 30 GAL **B** 30 GAL



NEW!
2518S

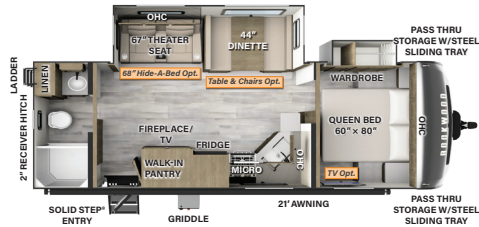
LENGTH: 25' 10" WIDTH: 8' HEIGHT: 10' 11" HITCH: 645 AXLE: 4915

UWW: 5619 CCC: 2026 **F** 54 GAL **G** 60 GAL **B** 30 GAL



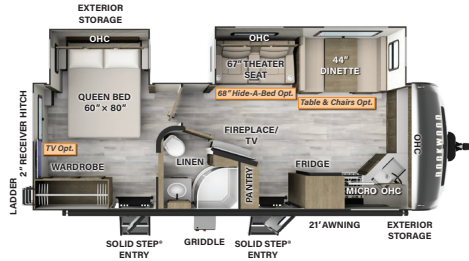
Power Package Option Available

ULTRA LITE FLOORPLANS



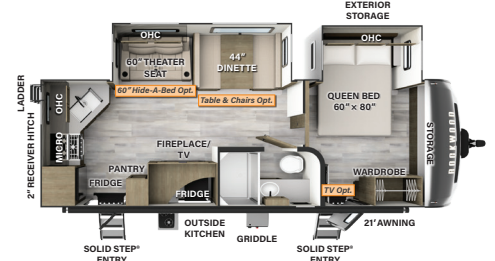
2606WS

LENGTH: 29' 9" WIDTH: 8' HEIGHT: 11' 2" HITCH: 840 AXLE: 5742
UWV: 6641 CCC: 1999 **F** 54 GAL **G** 90 GAL **B** 45 GAL



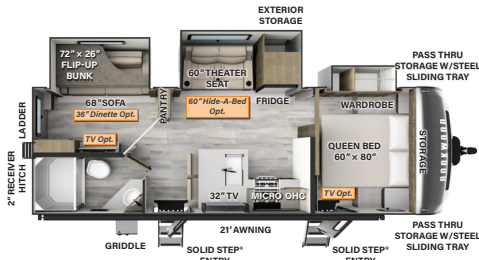
2608BS

LENGTH: 29' 8" WIDTH: 8' HEIGHT: 11' 2" HITCH: 946 AXLE: 5831
UWV: 6836 CCC: 1910 **F** 54 GAL **G** 90 GAL **B** 45 GAL



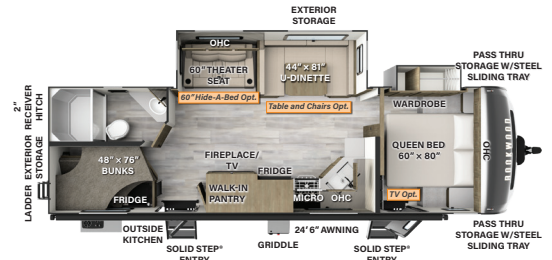
2614BS

LENGTH: 29' 9" WIDTH: 8' HEIGHT: 11' 2" HITCH: 796 AXLE: 6133
UWV: 6988 CCC: 1608 **F** 54 GAL **G** 90 GAL **B** 45 GAL



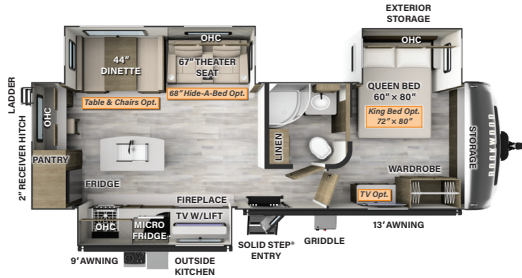
NEW!
2616BH

LENGTH: 29' 9" WIDTH: 8' HEIGHT: 11' 3" HITCH: 938 AXLE: 6137
UWV: 7134 CCC: 1604 **F** 54 GAL **G** 90 GAL **B** 45 GAL



2706WS

LENGTH: 32' 10" WIDTH: 8' HEIGHT: 11' 2" HITCH: 921 AXLE: 6330
UWV: 7310 CCC: 1411 **F** 54 GAL **G** 90 GAL **B** 45 GAL



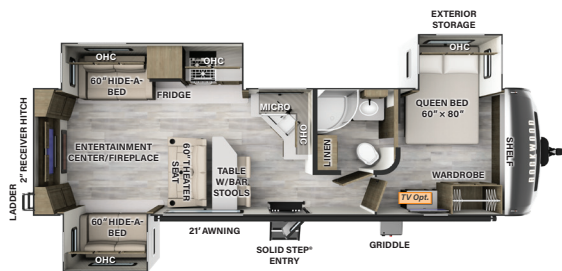
2720IK

LENGTH: 33' 1" WIDTH: 8' HEIGHT: 11' 3" HITCH: 978 AXLE: 7114
UWV: 8151 CCC: 1627 **F** 54 GAL **G** 90 GAL **B** 45 GAL



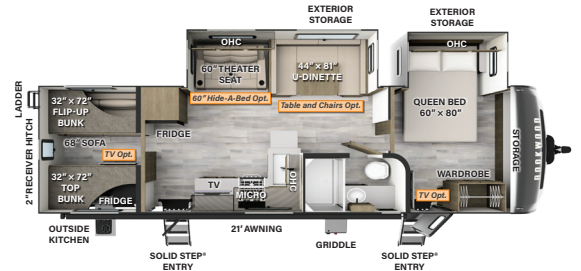
2906BS

LENGTH: 35' 5" WIDTH: 8' HEIGHT: 11' 3" HITCH: 1100 AXLE: 7400
UWV: 8559 CCC: 1341 **F** 54 GAL **G** 45 GAL **B** 45 GAL



NEW!
2908RL

LENGTH: 35' 5" WIDTH: 8' HEIGHT: 11' 2" HITCH: 930 AXLE: 7295
UWV: 8284 CCC: 1446 **F** 54 GAL **G** 45 GAL **B** 45 GAL



2911BS

LENGTH: 35' 5" WIDTH: 8' HEIGHT: 11' 2" HITCH: 1102 AXLE: 6708
UWV: 7869 CCC: 2033 **F** 54 GAL **G** 45 GAL **B** 45 GAL



Rockwood Warranty. Our Promise.

FOR DETAILS ON ROCKWOOD'S COMPLETE WARRANTY PROGRAM, SEE YOUR ROCKWOOD DEALER.

When it comes to backing products with the same quality and commitment it does when it begins the manufacturing process, the only name you have to remember when you're looking for a recreational vehicle is Rockwood. Rockwood offers the following additional limited warranties to the original purchasers. Consult written warranty for details.

1 Limited Lifetime roofing warranty.*

2 Two-year fiberglass warranty.

3 Ten-year Torflex® axle warranty.

4 One-year bumper to bumper warranty.

*Lifetime warranty is limited to original owner

Specification Definitions

GVWR (Gross Vehicle Weight Rating): is the maximum permissible weight of the unit when fully loaded. It includes all weights, inclusive of all fluids, cargo, optional equipment and accessories. For safety and product performance do NOT exceed the GVWR.

GAWR (Gross Axle Weight Rating): is the maximum permissible weight, including cargo, fluids, optional equipment and accessories that can be safely supported by a combination of all axles.

UVW (Unloaded Vehicle Weight):¹ is the typical weight of the unit as manufactured at the factory. It includes all weight at the unit's axle(s) and tongue or pin and LP Gas. The UVW does not include cargo, fresh potable water, additional optional equipment or dealer installed accessories.

CCC (Cargo Carrying Capacity):¹ is the amount of weight available for fresh potable water, cargo, additional optional equipment and accessories. CCC is equal to GVWR minus UVW. Available CCC should accommodate fresh potable water (8.3 IWW per gallon). Before filling the fresh water tank, empty the black and gray tanks to provide for more cargo capacity.

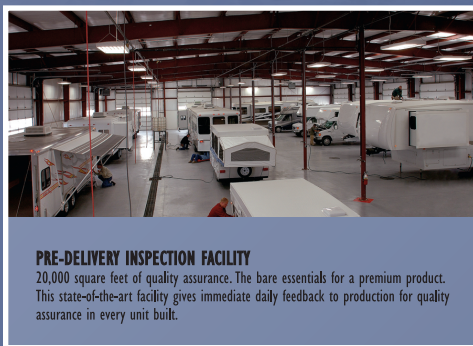
Each Forest River RV is weighed at the manufacturing facility prior to shipping. A label identifying the unloaded vehicle weight of the actual unit and the cargo carrying capacity is applied to every Forest River RV prior to leaving our facilities.

The load capacity of your unit is designated by weight, not by volume, so you cannot necessarily use all available space when loading your unit.

All information contained in this brochure is believed to be accurate at the time of publication. However, during the model year, it may be necessary to make revisions and Forest River, Inc., reserves the right to make all such changes without notice, including prices, colors, materials, equipment and specifications as well as the addition of new models and the discontinuance of models shown in this brochure. Therefore, please consult with your Forest River dealer and confirm the existence of any materials, design or specifications that are material to your purchase decision. © 2023 Rockwood RV, a Division of Forest River, Inc., a Berkshire Hathaway Company. All Rights Reserved.

 02/14 Rockwood

1 Estimated Average based on standard build optional equipment



PRE-DELIVERY INSPECTION FACILITY
20,000 square feet of quality assurance. The bare essentials for a premium product. This state-of-the-art facility gives immediate daily feedback to production for quality assurance in every unit built.



RV WITH US



@RockwoodRVs



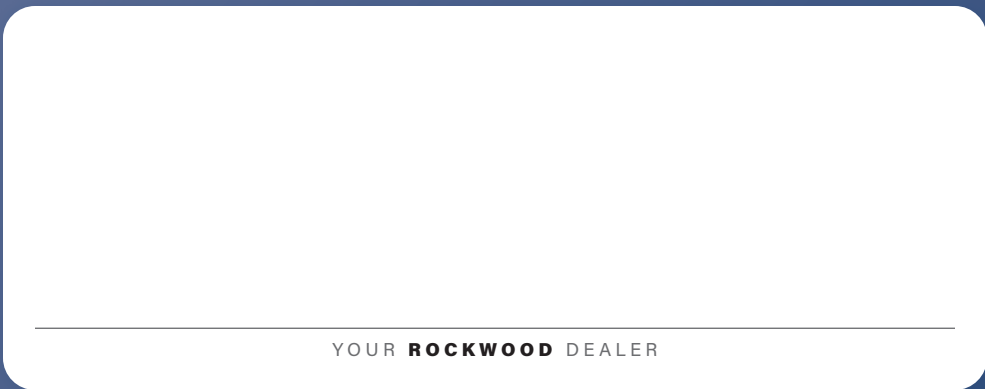
CUSTOMER SATISFACTION



www.ForestRiverBuyLocal.com

FOREST RIVER OWNER'S GUIDE

Now you can have your Owner's Manual with you wherever you are. Download our FREE App from the App Store or Google Play and you'll have the information right at your fingertips.



YOUR **ROCKWOOD** DEALER



Learn More
Scan this barcode using a QR Reader on your smart phone to learn more about Forest River.



A Berkshire Hathaway company

ROCKWOOD

201 WEST ELM MILLERSBURG, IN 46543
WWW.FORESTRIVERINC.COM/ROCKWOOD

574.642.2640

FREE MEMBERSHIP
to Forest River Owners' Group

www.forestriverfrog.com

