

Shadow Cruiser

Freedom Within Reach



CRUISER^{RV}

Great American Trailers.



Shadow Cruiser

Freedom Within Reach

For everyone who's ever wanted to see America, but thought you couldn't afford a serious travel trailer, the Shadow Cruiser is for you. It's the most affordable trailer in our lineup, but that doesn't mean it's short on quality or comfort. Feature for feature, dollar for dollar, this budget-friendly beauty leaves all competitors in its shadow. It's lightweight, easy to tow, surprisingly well appointed, and even boasts a thoughtfully enclosed and heated underbelly to keep you toasty in cooler weather. This family favorite comes in many versatile floorplans – from cozy couples coaches to bunkhouse models that sleep up to 10 spirited adventurers.



Strong Foundation

- Oversized I-beam frame
- Heavy-duty axles
- Heavy-duty tires with aluminum rims
- 5/8" tongue and groove plywood flooring



Ultra-lite Construction

- Lightweight but strong
- Azdel composite wall panels
- High-density block foam insulation
- Fully walkable roof



Cruiser Comforts

- King bed slide system (patent pending)
- Dual ducted A/C system
- Industry-leading ceiling heights
- Extended Season RVing Package



Camping Conveniences

- Industry-leading pass-through storage
- Full Belly Storage (patent pending)
- More drawers, cabinets and cubbies
- Power stabilizer jacks
- 30" wide entry door



Cruiser Care

- Employee pride
- 100% pre-delivery testing
- State-of-the-art production & warehouse facilities
- 1-year limited factory warranty
- 3-year limited structural warranty
- Multi-year supplier warranties



Top 5 Exterior Features

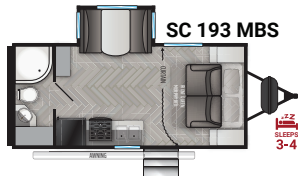
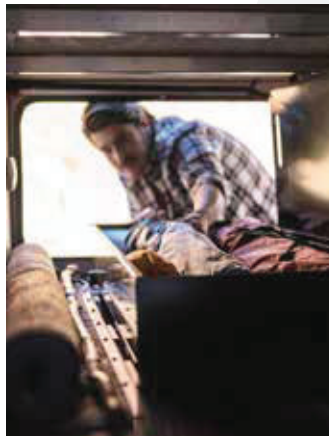
1. Patent pending full belly pass-through storage system
2. Painted, molded fiberglass front cap with LED lights
3. Azdel composite laminated sidewalls
4. 5-sided aluminum framing
5. Surround seal slide system with rain gutter

Top 5 Interior Features

1. Patent pending king bed slide system
2. Industry first underbed pet palace
3. Tongue and groove plywood floors
4. Seamless edge kitchen countertops
5. Dual ducted A/C and high BTU furnace

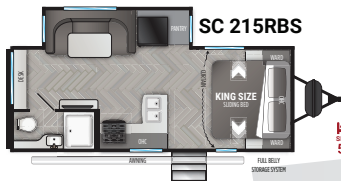


For more information and full technical specifications, visit our website at cruiserrv.com

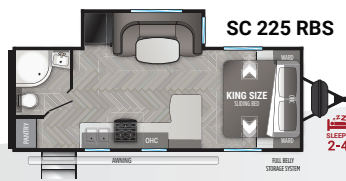


Length 22' Dry 4,520 lbs. Hitch 580 lbs. Height 10' 11"

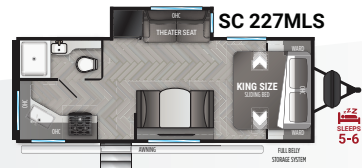
SHADOW CRUISER



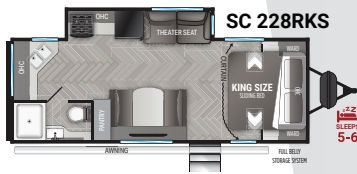
Length 25' 7" Dry 5,264 lbs. Hitch 714 lbs. Height 11' 2"



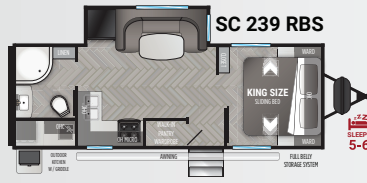
Length 25' 10" Dry 5,138 lbs. Hitch 486 lbs. Height 10' 11"



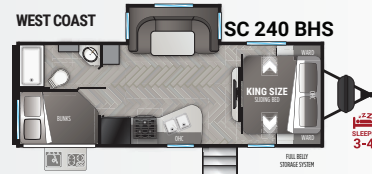
Length 26' 11" Dry 5,20 lbs. Hitch 720 lbs. Height 10' 11"



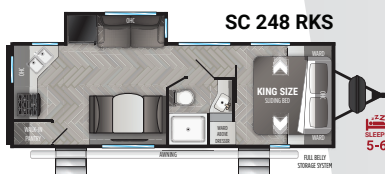
Length 26' 11" Dry 5,282 lbs. Hitch 654 lbs. Height 10' 11"



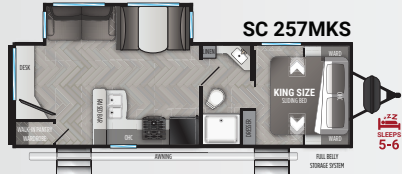
Length 27' 11" Dry 5,768 lbs. Hitch 670 lbs. Height 10' 11"



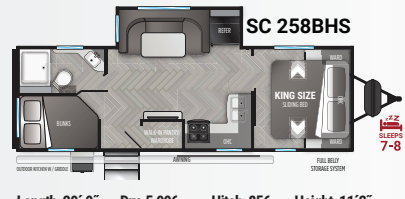
Length 27' 7" Dry 5,460 lbs. Hitch 660 lbs. Height 10' 11"



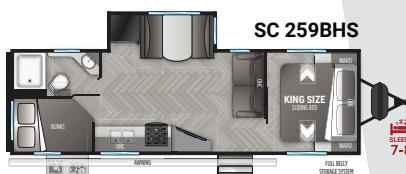
Length 28' 11" Dry 5,845 lbs. Hitch 469 lbs. Height 10' 11"



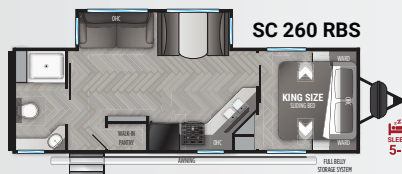
Length 29' 11" Dry 5,812 lbs. Hitch 720 lbs. Height 10' 11"



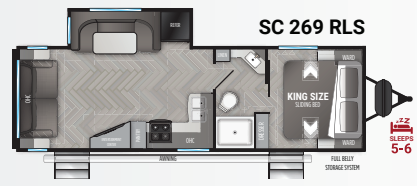
Length 29' 9" Dry 5,996 lbs. Hitch 856 lbs. Height 11' 2"



Length 30' 11" Dry 6,048 lbs. Hitch 906 lbs. Height 10' 11"



Length 30' 10" Dry 6,160 lbs. Hitch 878 lbs. Height 10' 11"



Length 30' 11" Dry 5,832 lbs. Hitch 820 lbs. Height 10' 11"



Length 32' 10" Dry 6,565 lbs. Hitch 660 lbs. Height 11' 2"



Length 31' 11" Dry 6,288 lbs. Hitch 816 lbs. Height 10' 11"



Length 36' 6" Dry 7,312 lbs. Hitch 1,036 lbs. Height 11' 2"



A Great American Trailer Company.

Since 1988, Cruiser RV has built lightweight, high-quality trailers for people who love the great outdoors. Here at Cruiser, we take the time to construct solid, hard-working trailers and toy haulers that *last*. These are the towables that help you feel safe, comfortable and free to enjoy the great American RV lifestyle. Ultra lightweight, easy to tow, and loaded with the kind of luxury and high-end features our customers expect, Cruiser RVs are easily the best value on the road. No matter what new adventure lies ahead, you'll find freedom at every turn with a Cruiser RV.

Your Local Cruiser RV Dealer:



WE'RE BEHIND YOU ALL THE WAY.

With state-of-the-art factory service facilities and more than 400 dealers across the U.S. and Canada, you're never far from an authorized Cruiser RV dealer.



CRUISERRV
Great American Trailers.

CRUISERRV.com

7805 North SR 9 • Howe, IN 46746 • 866-277-5630



MADE IN THE U.S.A.

Product information is as accurate as possible as of the date of publication of this brochure. Due to Cruiser's commitment to continuous product improvement, floor-plans, materials, components, features, measurements, specifications, options, etc. are subject to change at any time without notice or obligation. In certain conditions some additional equipment may be needed. Photos may show optional equipment or props used for photography purposes only. Cruiser has listed the approximate base weight of the trailer without the optional equipment included. Optional equipment will impact the weight of the trailer. Please locate the weight sticker attached to the trailer you are considering for the most accurate trailer weight. Tow Vehicle Caution: Owners of Cruiser recreational vehicles are solely responsible for the selection and proper use of tow vehicles. All customers should consult with the motor vehicle manufacturer or their dealer concerning the purchase and use of suitable tow vehicles for Cruiser products. Cruiser disclaims any liability or damages suffered as a result of the selection, operation, use or misuse of a tow vehicle. Cruiser's limited warranty does not cover damage to the recreational vehicle or the tow vehicle as a result of the selection of the tow vehicle. Overall length for a Fifth Wheels is defined as the body length of the trailer excluding hitch meaning bumper to cap. The overall length for a Travel Trailer is defined as the body length of the trailer including hitch, meaning bumper to hitch(pin) It does not include rear ladder of spare tire. Optional pin boxes will affect overall length.