



Jay Flight



Serial #: 1UJBC0BRXP17K0213
 Model: 280RKS JAY FLIGHT TT

Model Year: 2023 Dealer Name: VOGT RV
 5301 AIRPORT FREEWAY
 FT WORTH, TX 76117
 USA

Standard Equipment

THE FOLLOWING ITEMS ARE STANDARD ON THIS MODEL AT NO EXTRA CHARGE

- EXTERIOR**
- 20 lb. LP Bottles with Cover (2)
 - Enclosed underbelly
 - Axles with electric, self-adjusting brakes and easy-lube hubs
 - 1-Class™ cambered structural steel I-beams
 - Fully integrated A-frame
 - 5/8 in. tongue-and-groove plywood floor decking
 - Magnum Truss™ Roof system with plywood decking
 - Seamless one piece roof material
 - Large exterior downspouts
 - Galvanized steel, impact-resistant wheel wells
 - 30-amp service
 - Front diamond plate
 - (4) Stabilizer jacks
 - Exterior TV mount and bracket
 - LED exterior lighting
 - Friction hinge entry door with shade-prep window
 - G20 dark tinted safety-glass privacy windows
 - LP quick connect (outside gas grill prep)
 - Detachable power cord
 - Backup & side marker camera prep

- INTERIOR**
- 81 in. ceiling height
 - 7 cu. ft. gas/electric refrigerator
 - Shower/tub surround
 - Solid hardwood cabinet doors
 - LED interior lighting
 - J-Steel™ jackknife sofa with armrest & cup holders (most models)
 - Vinyl flooring throughout (including slide floors)
 - Window shades
 - Smoked-glass cabinet door inserts (select models)
 - Residential-style kitchen countertops
 - 3-burner range with glass cover
 - Oven with glass door and interior light
 - Heavy-duty, 75 lb., full-extension, steel ball-bearing drawer guides
 - Range hood
 - USB charging station
 - Queen mattress
 - Plywood bed platforms
 - Main bed struts
 - 300 lb. rated bunk beds (select models)
 - 600 lb. rated bunk beds (double bunks)
 - Privacy curtains in bunk areas (select models)
 - Vented bunk windows (select models)
 - 4 in. thick bunk mats (select models)
 - Wooden bedroom doors (select models)
 - Shower curtain with curved shower track (select models)

- CUSTOMER VALUE PACKAGE (mandatory)**
- Black tank flush
 - Roof mounted solar prep
 - Large main entry door grab handle
 - Solid Step® entry steps (N/A 380DQS)
 - Tankless water heater
 - Cable/satellite TV hookup
 - Digital TV antenna
 - Goodyear® Endurance® tires (made in the USA)
 - Outside shower
 - Power tongue jack
 - Spare tire with cover
 - Water heater bypass
 - Power awning with LED lights
 - Marine grade exterior speakers
 - Keyed-Alike™ entry and baggage doors
 - Bathroom power vent
 - Bathroom skylight
 - Tub surround

Optional Equipment

OPTIONAL EQUIPMENT INSTALLED ON THIS VEHICLE BY MANUFACTURER

Base price	44,243.00
Classic Cottage	n/c
USA Standards	n/c
Customer Value Package	3,300.00
Overlander Solar Package	593.00
15,000 BTU AC	188.00
No 2nd AC	n/c
30 AMP Service	n/c
8 Cu. Ft. 12V Refrigerator	293.00
Metal Sidewall	n/c
Silver Spoke Rims	n/c
20# LP Gas Bottles	n/c
Roof Ladder	188.00
Dinette	n/c
Hide-A-Bed Sofa	593.00

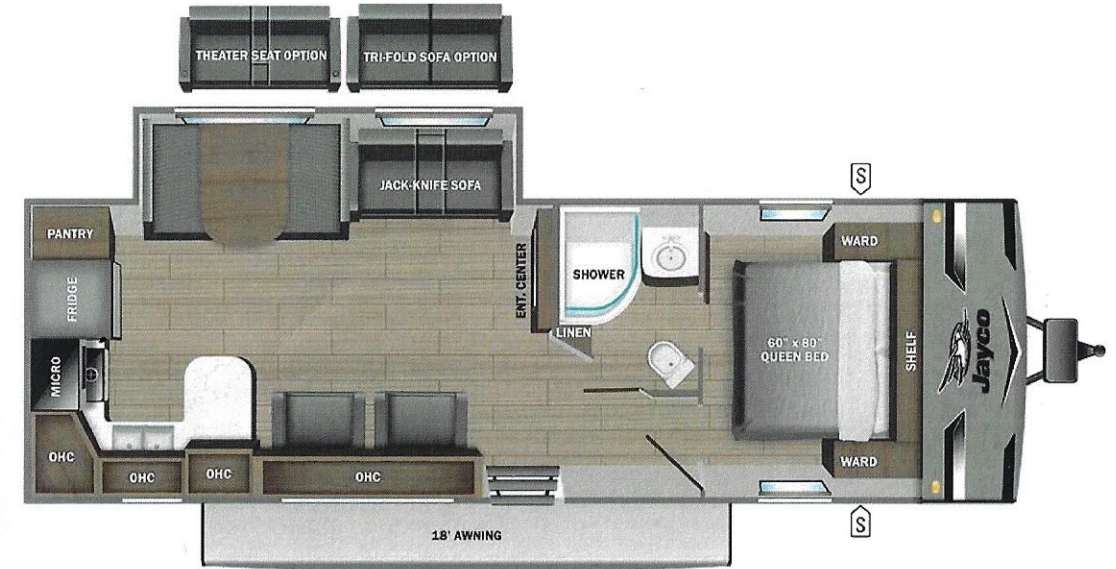
FRT- \$2,869.68
 PDI-\$1,495.00

UNIT TOTAL \$53,762.68

DEALER INSTALLED OPTIONS

Manufacturer's Suggested Retail Price

TOTAL AMOUNT DOES NOT INCLUDE STATE AND LOCAL TAXES OR LICENSE FEES. THE PRICE SHOWN ABOVE MAY OR MAY NOT BE REPRESENTATIVE OF THE ACTUAL SELLING PRICE OF SIMILAR RECREATIONAL VEHICLES IN YOUR AREA.



lb **UVW** 6706 lbs **Sleeps** **Length** 33' 9.75"

DIMENSIONS

Exterior height:.....134.75"
 Exterior width:.....96.00"

WEIGHTS

GVWR:.....8150
 GAWR (front):.....4400
 GAWR (rear):.....4400
 Approx. Gross Cargo Carrying Capacity (GCCC):.....1444

TIRES

Tire size (front):.....ST225/75R15E
 Tire size (mid):.....
 Tire size (rear):.....ST225/75R15E
 Tire size (spare):.....ST225/75R15E

CAPACITIES

Fresh water tank (gals.):...38.00
 Gray water tank (gals.):...78.00
 Black water/toilet tank (gals.):.....39.00
 Propane (lbs.):.....40
 Propane (gals.):.....9
 Water heater (gals.):.....0.00

SEATING & SLEEPING

Some dimensions may be rounded and may vary from the actual dimensions
 Weights may be estimated calculations and may vary from the actual weight - refer to the vehicle weight labels for actual weights
 Floorplans, features and specifications are subject to change without notice.

