

VERONA

2024 LE



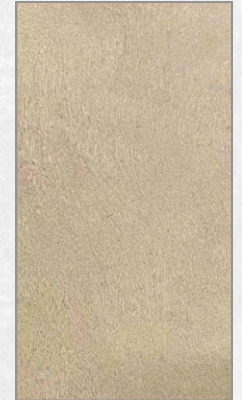
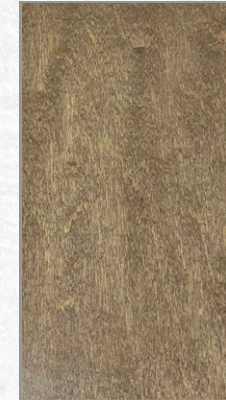
Renegade
RV

VERONA LE

SURROUND YOURSELF WITH THE SPACE YOU DESERVE WHILE MAINTAINING EXCEPTIONAL QUALITY AND DESIGN IN THE VERONA LE. THIS SPACIOUS UNIT FEATURES HIDDEN SLEEPING AREAS, POLISHED SOLID SURFACE COUNTERTOPS, SOLID HARDWOOD CABINETS AND TILE BACKSPLASH. A FULL BATH AND PLENTY OF STORAGE ALLOW YOU TO ENJOY ALL THE COMFORTS OF HOME WHILE ON THE ROAD. THE VERONA LE HAS EVERYTHING YOU NEED IN AN RV.



CABINETS



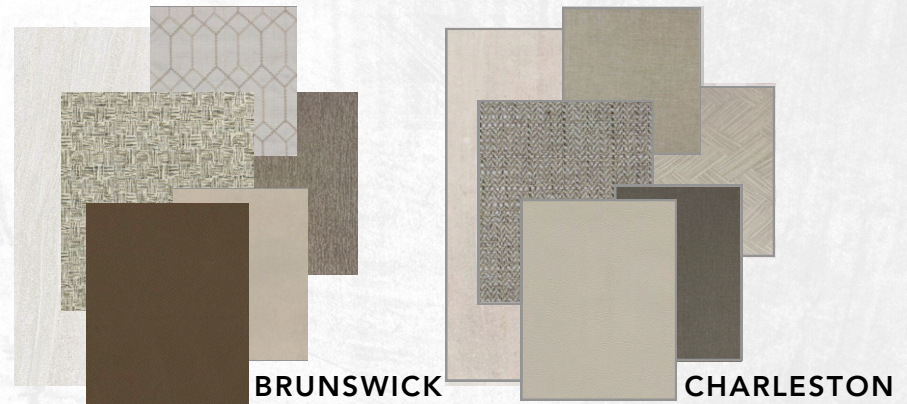
ROCKPORT LAKEWOOD CAPE COD



Featured here is the Verona LE 40LTS in our Charleston decor with our beautiful Lakewood cabinetry.



INTERIOR DECORS



AT A GLANCE



EXTERIOR HEIGHT	12'10"
EXTERIOR WIDTH	99 1/4"
EXTERIOR LENGTH	37' 1" - 40' 2"
INTERIOR HEIGHT	84"
INTERIOR WIDTH	95 1/2"
FUEL CAPACITY	100 GALLONS
DEF CAPACITY	6 GALLONS
FRESH WATER CAPACITY	150 GALLONS
GREY WATER CAPACITY	75 GALLONS
BLACK WATER CAPACITY	75 GALLONS

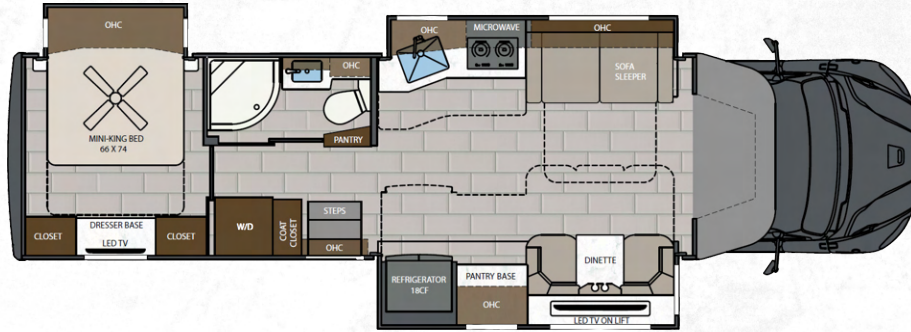
KEY FEATURES

- CUMMINS® 360HP 3200TRV ALLISON® TRANSMISSION
- AQUAHOT® 450D HYDRONIC HEATING SYSTEM
- MULTIPLEX SYSTEM WITH COLOR TOUCH PANEL & BLUETOOTH APP CONTROL
- ALL ELECTRIC COACH W/ONE 3,000 WATT HYBRID INVERTER
- FULL BODY PAINT TREATMENT IN 7 SCHEMES
- FOUR-POINT AUTOMATIC HYDRAULIC LEVELING SYSTEM
- ROOF MOUNTED ELECTRIC LATERAL ARM AWNING WITH INTEGRATED LED LIGHTS
- SOLID HARDWOOD CABINETS AND SOLID SURFACE COUNTERTOPS

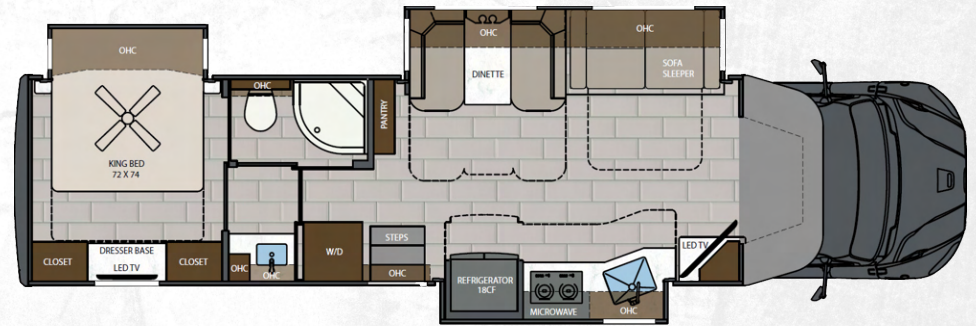


VERONA LE

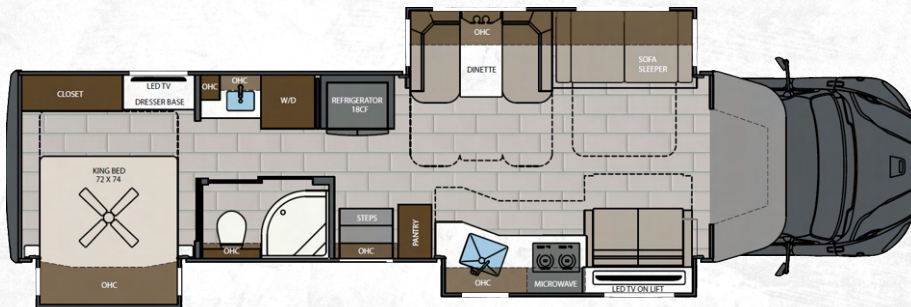
FLOORPLANS



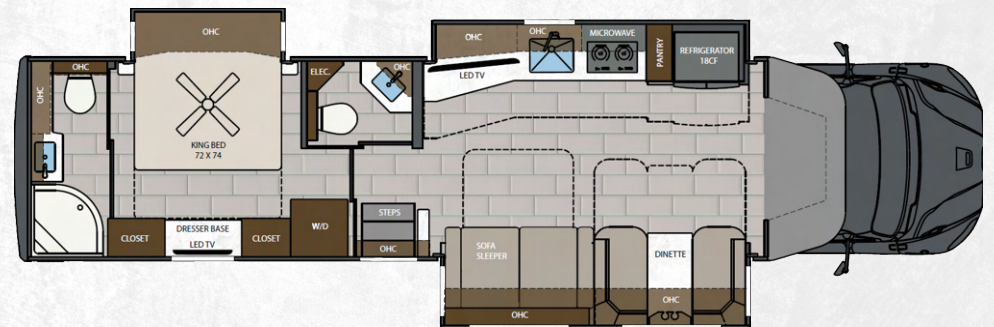
37LMB | 37' MID BATH, 3 SLIDES



38LDG | 38' MID BATH, 3 SLIDES



40LTS | 40' MID BATH, 3 SLIDES

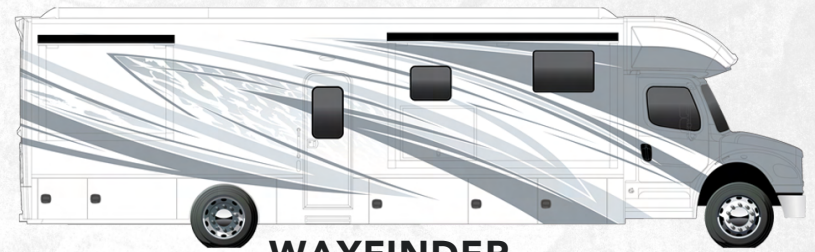


40LRB | 40' BATH AND A HALF, 3 SLIDES

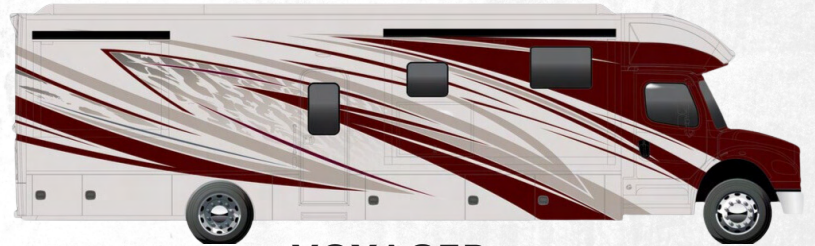
PAINT OPTIONS



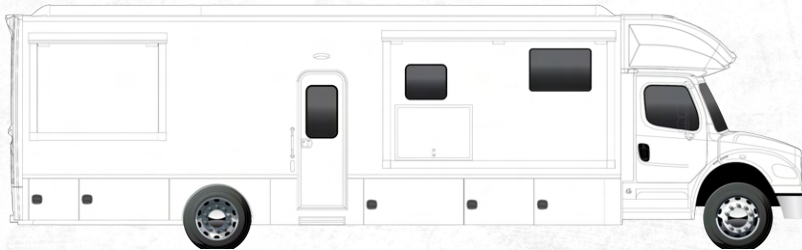
PATHFINDER



WAYFINDER



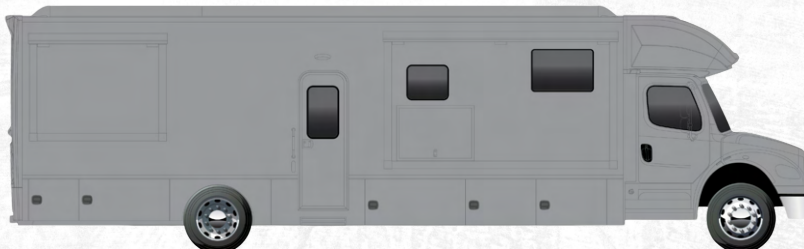
VOYAGER



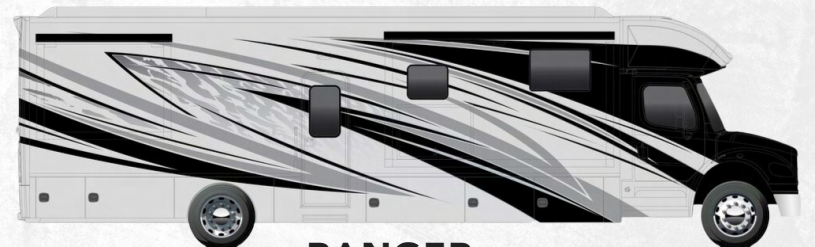
TUNDRA



TRAILBLAZER



POLARIS



RANGER

CAB/CHASSIS

- FREIGHTLINER® M2-106,
- CUMMINS® L9 ENGINE WITH 360HP, 1,150 LB. FT. TORQUE
- 34,300 LBS. GVWR
- ALLISON® 3200TRV ELECTRONIC 6-SPEED TRANSMISSION
- 20,000 LB. TOWING CAPACITY
- DUAL 50-GALLON ALUMINUM FUEL TANKS (100-GALLON TOTAL CAPACITY)
- 6 GALLON DEF TANK
- POLISHED ALUMINUM WHEELS WITH CENTER CAPS
- AIRLINER® REAR AIR SUSPENSION
- GARMIN® TOUCH SCREEN, BLUETOOTH, GPS, RV MAPS AND COLOR CAMERA MONITOR
- REAR AND SIDE VIEW CAMERAS
- PREMIUM FREIGHTLINER® SOUND AND THERMAL INSULATION PACKAGE
- LED HEADLIGHT ASSEMBLIES
- CRUISE CONTROL
- POWER WINDOWS AND DOOR LOCKS
- POWER/HEATED REMOTE CONTROL MIRRORS
- AIR RIDE DRIVER AND PASSENGER SEAT PEDESTALS WITH SWIVELS
- SOFT TOUCH DRIVER/PASSENGER SEATS WITH ARMRESTS
- AUXILIARY AIR CHUCK AND HOSE
- FREIGHTLINER® SAFETY ASSURANCE PACKAGE:
 - TAILGATE WARNING
 - LANE GUIDANCE
 - ELECTRONIC STABILITY CONTROL
 - COLLISION MITIGATION

EXTERIOR

- AERODYNAMIC FIBERGLASS FRONT AND REAR CAPS, TRANSITION, FENDERS, AND CAB STEPS
- FOUR-POINT HYDRAULIC LEVELING SYSTEM WITH APP
- LIGHTED EXTERIOR ENTRY DOOR ASSIST HANDLE
- KEYLESS ENTRY
- POWERED FOLDING DOUBLE ENTRY STEPS
- (7) COLORWAY PAINT OPTIONS
- ROOF MOUNTED GIRARD® 2-STAGE LATERAL ARM AWNING WITH LED LIGHTS WITH END CAPS
- SLIDE TOPPERS
- FRAMELESS DUAL-PANE TINTED WINDOWS WITH SCREENS
- POWER LOCKING, SIDE-SWING ALUMINUM COMPARTMENT DOORS WITH SINGLE HANDLE PADDLE LATCHES AND DOUBLE CATCH
- STEEL STORAGE COMPARTMENTS WITH CARPETED LINING
- DIAMOND SHIELD® NANO-FUSION™ PAINT PROTECTION (FRONT MASK)
- FULL-WIDTH ROCK GUARD MUDFLAP
- UNDERCOATING

CONSTRUCTION

- 2" VACUUM BOND LAMINATED SIDEWALLS WITH WELDED ALUMINUM FRAMING
- WELDED ALUMINUM ROOF TRUSS SYSTEM WITH FRAMED CUTOUTS
- ONE-PIECE CROWNED FIBERGLASS ROOF SURFACE
- "SUPER SANDWICH" FLOOR CONSTRUCTION WITH COMPOSITE UNDERBELLY INCLUDES:
 - 2" WELDED STEEL FLOOR JOIST SYSTEM MOUNTED TO 3" STEEL LONGITUDINAL FLOOR BEAMS
 - 3/4" FIR PLYWOOD DECK OVER 2 X 4 WOOD-FRAMED RESIDENTIAL FLOOR WITH THERMAL AND SOUND DEADENING INSULATION

INTERIOR

- (3) INTERIOR DECOR OPTIONS
- DÉCOR COORDINATING FABRIC VALANCES
- DOUBLE ROLLER DAY/NIGHT SHADES (MANUAL)
- DECORATIVE WALLBOARD WITH COORDINATING ACCENT IN SLIDEOUTS
- 12"X24" PORCELAIN TILE FLOORING THROUGHOUT
- MAPLE HARDWOOD CABINETY
- 3-WOOD STAIN COLOR OPTIONS, 2-FINISH OPTIONS
- DOVETAIL DRAWERS ON SOFT CLOSING SLIDES
- FRAMED DOORS ON HIDDEN HINGES
- PANTRY
- HARDWOOD SLIDE FASCIA WITH LIGHTING
- SATIN NICKEL DOOR HARDWARE
- SATIN NICKEL KITCHEN FAUCET
- SOLID SURFACE COUNTERTOPS THROUGHOUT
- RECTANGULAR SINGLE BOWL UNDERMOUNT KITCHEN SINK WITH COVER
- ACCENT LIGHTING AT TOEKICKS
- GROUTED TILE BACKSPLASH
- LED LIGHTING
- MEMORY FOAM MATTRESS
- ULTRA SOFT TOUCH VINYL FURNITURE UPHOLSTERY
- CONVERTIBLE BOOTH DINETTE WITH STORAGE (N/A ON 37LMB)
- MINI BOOTH DINETTE WITH STORAGE (37LMB ONLY)
- SOFA SLEEPER, HIDE-A-BED
- LOVESEAT WITH STORAGE (40LTS ONLY)
- AEROCAP WITH STORAGE CABINET

APPLIANCES

- 18 CU. FT. FRENCH DOOR RESIDENTIAL STAINLESS STEEL REFRIGERATOR WITH ICEMAKER
- RECESSED 2-BURNER ELECTRIC INDUCTION COOKTOP WITH POLISHED SOLID SURFACE COVERS
- 1.7 CU. FT. STAINLESS STEEL CONVECTION MICROWAVE OVEN
- AQUA-HOT® 450D HYDRONIC WATER AND ZONE HEATING SYSTEM
- (2) 15,000 BTU ROOF A/C WITH HEAT PUMPS AND PLUMBED CONDENSATION LINES
- DUCTED AIR CONDITIONING
- MAXXAIR® POWER VENTS
- PRE-WIRED AND PLUMBED FOR OPTIONAL WASHER/DRYER
- CARBON MONOXIDE, LP AND SMOKE DETECTORS, AND FIRE EXTINGUISHER

ENTERTAINMENT SYSTEM

- 50" 4K SMART LED TV IN LIVING AREA
- SOUNDBAR HOME THEATER WITH BLUETOOTH STREAMING AND WIRELESS SUBWOOFER IN LIVING AREA
- 32" 4K SMART LED TV IN THE BEDROOM
- EXTERIOR ENTERTAINMENT CENTER
 - 43" SMART LED TV ON SWIVEL
 - SOUNDBAR WITH BLUETOOTH STREAMING
 - USB CHARGING
- WINEGARD® CONNECT 2.0 ROOFTOP OTA ANTENNA WITH WIFI AND 4G READY (SIM CARD REQ.)
- WINEGARD® IN-MOTION SATELLITE SYSTEM
- PREWIRE FOR WINEGARD® TRAV'LER STATIONARY HD SATELLITE SYSTEM

BATH

- MAPLE HARDWOOD VANITY, MEDICINE AND LINEN STORAGE CABINETS
- LED VANITY LIGHT
- DELUXE SATIN NICKEL BATH FAUCET AND ADJUSTABLE SHOWER HEAD
- SATIN NICKEL TOWEL BAR, TOWEL RING, AND TP HOLDER
- PORCELAIN MACERATOR TOILET WITH PUSH BUTTON FLUSH
- SOLID SURFACE COUNTERTOP WITH INTEGRATED SINK
- WAVY PATTERNED FIBERGLASS SHOWER WITH GLASS DOOR
- SKYLIGHT OVER SHOWER

ELECTRICAL SYSTEMS

- 8KW ONAN® QUIET DIESEL GENERATOR
- AUTOMATIC GENERATOR START SYSTEM
- 50-AMP ELECTRICAL PANEL
- 3,000W TRUE SINE WAVE INVERTER
- TRANSFER SWITCH WITH SURGE PROTECTION
- (2) 330AH AGM HOUSE BATTERY
- SOLAR CHARGING SYSTEM PRE-WIRE
- MULTIPLEX CONTROL SYSTEM WITH BLUETOOTH APP CONTROL
- USB/USB-C CHARGING IN LIVING AREA, BEDROOM, KITCHEN AND BUNK AREAS
- 50-AMP POWER RETRACTABLE SHORE CORD REEL
- 12V HOLDING TANK HEATERS, GREY AND BLACK TANKS

PLUMBING

- 150 GALLON FRESH WATER TANK
- 75 GALLON GREY TANK
- 75 GALLON BLACK TANK
- SEE-LEVEL® TANK MONITORING SYSTEM
- FULL MAINTENANCE WET BAY
 - BLACK TANK FLUSH SYSTEM
 - CITY WATER HOOKUP WITH POWERED RETRACTABLE HOSE REEL
 - OUTSIDE FAUCET WITH SPRAYER
- ON DEMAND WATER PUMP
- WHOLE HOUSE WATER FILTRATION SYSTEM

POPULAR OPTIONS

- RECLINING THEATRE SEAT ILO STANDARD SOFA
- FLOOR HEAT THROUGHOUT
- CABOVER BUNK WITH WINDOW, POWER SHADE, AND 24" SMART LED TV
- WINEGARD® HD SATELLITE TRAVELR PRO
- 600W SOLAR PANEL SYSTEM (3 @ 200W)
- (2) 270AH HIGH-CAPACITY LITHIUM BATTERIES ILO AGM BATTERIES
- ADDITIONAL 270AH HIGH-CAPACITY LITHIUM BATTERY (LIMIT 1)
- AMERICAN RACING WHEELS® UPGRADE (BLACK)
- CALIBER 9® GRILLE PACKAGE (AVAIL. IN CHROME OR BLACK)
- WASHER AND DRYER STACK
- CENTRAL VACUUM SYSTEM
- PREMIUM EXTERIOR REFER/FREEZER ON SLIDE TRAY
- HOLDING TANK SEWAGE MACERATOR SYSTEM

RENEGADE WARRANTY

RENEGADE MY2024 MOTORHOMES ARE COVERED BY A 1-YEAR UNLIMITED MILES LIMITED WARRANTY, PLUS A 3-YEAR 36,000-MILE LIMITED STRUCTURAL WARRANTY.

ALL RENEGADE MOTORHOME CHASSIS, ENGINES, TRANSMISSIONS, AND DRIVETRAIN WARRANTIES ARE PROVIDED AND ADMINISTERED BY THEIR RESPECTIVE MANUFACTURERS.

FOR SPECIFIC INFORMATION ABOUT THESE WARRANTIES, ASK YOUR DEALER OR CONTACT RENEGADE RV.



Renegade
RV

52216 SR15 BRISTOL, IN 46507
574.848.1126 | RENEGADERV.COM