



Odyssey



Serial #: 1JSLECBN6T1ER8055  
Model: 25R ODYSSEY MHC  
VIN#: 1FDXE4FN7TDD08530  
Model Year: 2026 Dealer Name: UNITED RV CENTERS INC.  
607 S 3RD AVE  
CHATSWORTH, GA 30705  
USA

Standard Equipment

Optional Equipment

THE FOLLOWING ITEMS ARE STANDARD ON THIS MODEL

OPTIONAL EQUIPMENT INSTALLED ON THIS VEHICLE  
BY MANUFACTURER

STANDARD EXTERIOR EQUIPMENT

- Ford® E-450 chassis
- GVWR - 14,500 lb.
- GCWR - 22,000 lb.
- 7.3L V-8 325 HP engine with 450 ft.-lb. torque
- 6-speed TorqShift® series transmission with overdrive
- 210-amp alternator
- Catalytic converter theft deterrent
- E-rated highway tires- LT225/75R16
- Tire pressure monitoring system (TPMS)
- Power anti-lock brakes with power steering
- 7,500 lb. hitch with 750 lb. tongue capacity and 7-pin plug
- 12V chassis battery
- 55 gal. fuel tank
- TuffShell™ vacuum-bond laminated roof, floor and sidewalls
- Bead-foam insulation (R-24 max roof, R-9 max floor, R-5 max walls)
- One-piece, seamless, fiberglass roof
- Aluminum running boards
- Fiberglass exterior walls with vinyl graphics
- Leveling jack prep
- Entrance door with industry's largest travel-view window
- Electric-powered entrance step with integrated house battery compartment
- Slideout cover awnings
- Pass-through storage compartment with light (select models)
- Exterior LED HD Smart TV with (2) JBL® high-output, marine-grade exterior speakers
- Third brake light
- Roof ladder (24B, 25R, 26M, 27U, 29V, 31F)
- Prep for satellite dish
- Cable TV hookup with RG-6 coax
- Winegard 2.0 Wi-Fi/4G antenna
- 4,000W generator
- Solar prep
- 1,000W inverter
- 12V house battery
- Transfer switch with reverse polarity protection
- 30-amp electrical service
- 12.2 gal. propane tank (41 lb.)
- LP quick-connect hookup
- Exterior utility center
- Winterization drain system
- Outside shower
- 12V demand water pump
- Water filtration system

CUSTOMER VALUE PACKAGE

- E-Z Drive™: Computer-balanced driveshaft, standard front and rear stabilizer bars, Hellwig® helper springs, rubber isolation body mounts
- One-piece, seamless fiberglass front cap
- Automotive-bonded panoramic window in front cap with power shade
- Frameless windows
- Heated holding tanks (12V pads)
- Electric patio awning with LED lights
- Black tank flush
- Sony® infotainment center with tilt/swivel, Apple® CarPlay and Android Auto™
- Backup and side-view cameras
- LED HD Smart TV in living area

STANDARD INTERIOR EQUIPMENT

- Swivel driver and passenger seats
- Remote-controlled, side-view mirrors
- Tilt steering wheel
- Cruise control
- Hill start assist
- Electronic stability control
- Traction control
- Automatic emergency braking (AEB)
- SecurLock® anti-theft ignition
- Auxiliary start switch
- Power windows and door locks
- Driver and passenger airbags
- Privacy curtain for cab area
- Remote keyless cab entry
- Custom-molded ABS surround in cab-over area
- Overhead bunk with 750 lb. capacity and safety net
- 84 in. ceiling height
- High-intensity recessed LED lights
- LED-lit slideout fascia
- Hardwood cabinet doors and drawer fronts
- Ball-bearing drawer guides
- Interior entrance door grab handle
- Interior command center
- Pleated blackout shades
- 15,000 BTU ducted A/C
- 30,000 BTU auto-ignition furnace
- Electric fireplace (26M, 30Z)
- 6 gal. gas/electric DSI auto-ignition water heater
- Entegra-exclusive, easy-operation legless dinette table
- 2-point lap safety belts in all designated seating locations
- JBL® audio system
- 10 cu. ft. 12V refrigerator
- All-in-one cooktop and oven
- Residential-size microwave
- LED-lit kitchen countertops
- Recessed stainless steel kitchen sink with cutting board sink cover
- Decorative kitchen backsplash
- Pop-up charging station with 120V outlet and USB plugs
- Queen-size bed with bedspread (24B, 25R, 29V, 30Z, 31F)
- King size bed with bedspread (27U)
- Queen-size power Murphy bed (26M)
- USB port and wireless charging in nightstands (27U, 29V, 30Z, 31F)
- USB port in cabinet over bed (24B, 25R, 26M)
- Under-bed storage (select models)
- Bedroom TV prep
- Large wardrobes
- Bunks with industry-exclusive, 300 lb. capacity each (31F)
- Wall-mounted tablet holder in each bunk (31F)
- Shower with decorative surround, glass door, skylight and light
- Recessed stainless steel bathroom sink
- Porcelain toilet with foot flush
- Powered roof vent in bathroom with wall switch
- Smoke alarm
- Carbon monoxide detector
- Fire extinguisher

Base price	169,568.00
FARMHOUSE DECOR	593.00
AMALGAM PARTIAL PAINT	4,943.00
USA STANDARDS	n/c
26 FORD E45 14500 158"	
7.3L TD307	n/c
CUSTOMER VALUE PACKAGE	6,000.00
HYDRAULIC AUTO LEVELING	
JACKS	3,893.00
200W ROOF MOUNTED SOLAR	
PANEL W/2ND HOUSE BATTERY	893.00
STANDARD HOUSE BATTERY	n/c
THEATER SEATING SOFA	743.00

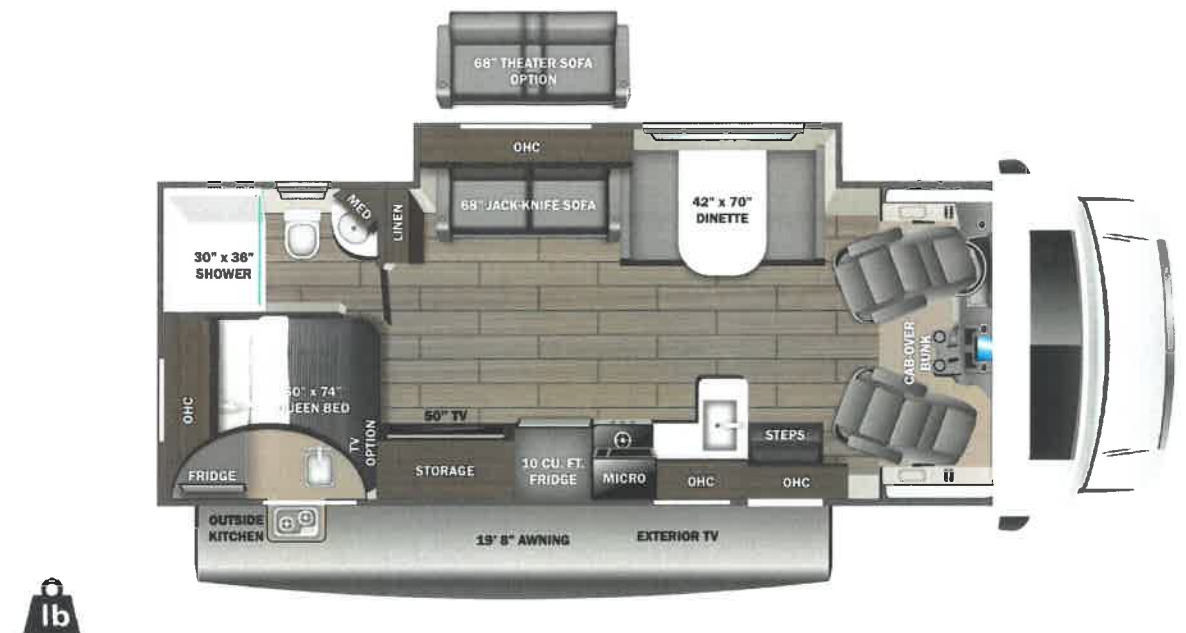
UNIT TOTAL 186,633.00

DEALER INSTALLED OPTIONS

Manufacturer's Suggested Retail Price

\$186,633.00

TOTAL AMOUNT DOES NOT INCLUDE STATE AND LOCAL TAXES OR LICENSE FEES. THE PRICE SHOWN ABOVE MAY OR MAY NOT BE REPRESENTATIVE OF THE ACTUAL SELLING PRICE OF SIMILAR RECREATIONAL VEHICLES IN YOUR AREA.



DIMENSIONS

Exterior height:.....140.00"  
Exterior width:.....100.00"

CAPACITIES

Fresh water tank (gals.):...38.00  
Gray water tank (gals.):....41.00  
Black water/toilet tank (gals.):.....32.00  
Propane (lbs.):.....41  
Propane (gals.):.....9  
Water heater (gals.):.....6.00

TIRES

Tire size (front):.....LT225/75R16E  
Tire size (mid):.....  
Tire size (rear):.....LT225/75R16E

\*\*\*Some dimensions may be rounded and may vary from the acutal dimensions\*\*\*

\*\*\*Weights may be estimated calculations and may vary from the actual weight

- refer to the vehicle weight labels for actual weights\*\*\*

Floorplans, features and specifications are subject to change without notice.