



ENTEGR A

COACH®



2013 ANTHEM

Without compromise.

INTERIOR COLORS

KENSINGTON PLACE



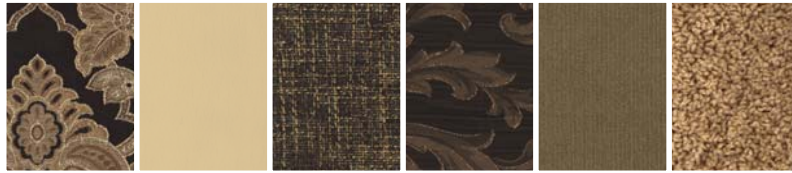
MAIN ULTRA-LEATHER SEATING COORDINATE BEDSPREAD ACCENT CARPET

SUNSET BOULEVARD



MAIN ULTRA-LEATHER SEATING COORDINATE BEDSPREAD ACCENT CARPET

BOARDWALK



MAIN ULTRA-LEATHER SEATING COORDINATE BEDSPREAD ACCENT CARPET



WASHINGTON GLAZED CHERRY



TUSCAN GLAZED MAPLE

EXTERIOR COLORS



RADIANT COPPER



EBONY BLAZE



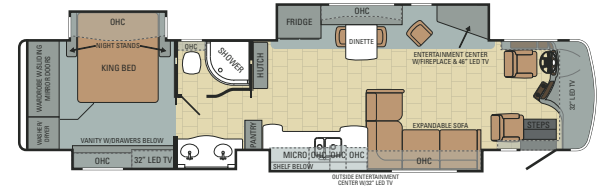
MIDNIGHT ILLUSION



WHITE DIAMOND PEARL

FLOORPLANS

42DEQ

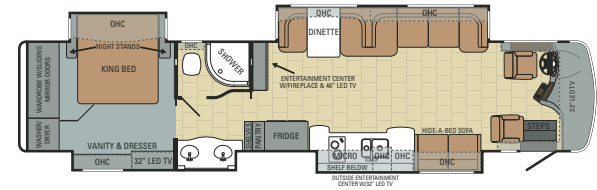


OPTION A



EASY BED SOFA W/TABLE OPTION

42DLQ OPTIONS B, C, D, E, F



OPTION B



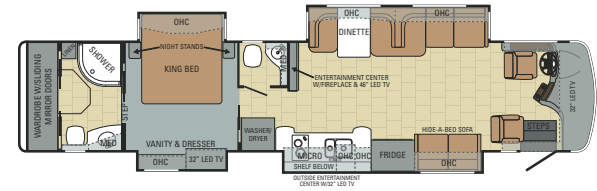
EASY BED SOFA W/TABLE OPTION

OPTION C



HIDE-A-BED W/DESK OR TABLE OPTION

42RBQ OPTIONS B, C, D, E, F

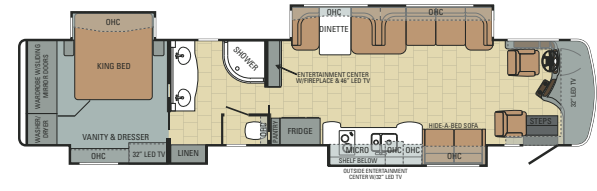


OPTION D



EURO CHAIR OPTION

44DLQ OPTIONS B, C, D, E, F



OPTION E



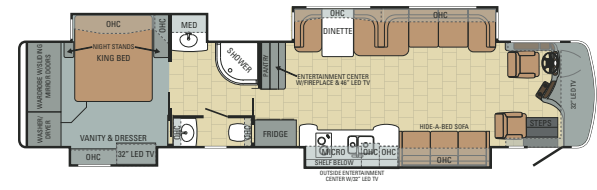
FREE STANDING TABLE W/4 CHAIRS

OPTION F



DESK OPT. W/26" TV

44SL OPTIONS A, C, D, E, F



STANDARDS & OPTIONS

BATHROOM

- 2-panel residential-style solid hardwood passage doors
- High gloss 12"x12" porcelain tile
- Power MaxxAir vent
- Solid surface countertops with integrated sink
- Porcelain tile shower with integrated seat
- Satin nickel fixtures
- Porcelain stool with push-button flush (in select models)

BEDROOM

- Samsung 32" LED HDTV
- Satin nickel reading lights
- Home theater system, Dolby Digital 5.1 Surround Sound
- Large cedar-lined wardrobe
- King Select Comfort air mattress
- In-bed remote secure coach locking system
- Hardwood wardrobe doors with mirror

KITCHEN

- High gloss 12"x12" porcelain tile with glass inlay design
- Flush-mounted, electric 2-burner cooktop
- 1.6 cu. ft. convection microwave oven with carousel
- Dishwasher drawer
- Satin nickel high-rise single-lever faucet with pull-out sprayer
- Solid surface sink covers (2)
- Solid surface countertops with integrated sink
- Residential refrigerator with ice maker and water dispenser
- Porcelain tile backsplash with glass design inlays
- Silverware drawer, divided for utensils
- Pullout cabinet extension with countertop
- Cutting board
- Large deep drawer with waste basket
- Chrome overhead slideout baskets (2)

INTERIOR

- (2) panel residential-style solid hardwood passage doors throughout
- High gloss 12"x12" porcelain tile floor
- Samsung 46" LED HDTV in living area
- All-in-one Dolby Digital 5.1 Surround Sound home theater system
- Central vacuum system with vac pan
- Power HDTV antenna with signal booster
- Electric fireplace
- Solid hardwood cabinetry
- Hardwood slide-out fascia
- Multiplex lighting
- LED recessed 12V lighting package
- Power day/night roller shades throughout

- Stackable washer and dryer
- Slideouts controlled with remote
- Hidden safe

DRIVER COMPARTMENT AMENITIES

- 3-point, lap and shoulder safety belts integrated into driver and passenger seats
- High gloss 12"x12" porcelain tile with glass inlay design in steps
- Adjustable foot pedal
- Chassis battery disconnect
- Battery boost switch
- Color back-up camera and monitor
- Fog lights
- In-dash compass and exterior temperature gauge
- Intermittent windshield wipers, single motor (SmartWheel controlled)
- Powered front sun visors and privacy shade
- Powered roller side sun visors and privacy shades
- Powered stepwell cover with pinch resistance technology
- Flexsteel Distressed Ultraleather power adjustable driver and passenger seats with integrated 3-point, lap and shoulder safety belts
- Side cameras with turn signals
- Sirius radio and tuner
- VIP SmartSteering wheel integrated controls for systems including radio controls
- VIP soft-touch, wood-grain, leather-wrapped, tilt and telescoping steering wheel
- Spartan Message Center with LCD display featuring: odometer, tachometer, instantaneous fuel economy, fuel remaining, outside air temp., coolant temp., engine oil temp. and pressure, transmission temp., turbo boost pressure, air pressure, diagnostic functions, fault codes, service reminders, percentage of engine load, trip meter, speed and voltage
- Touch-screen AM/FM/CD/DVD with GPS navigation, Bluetooth and (4) speakers
- Touch control for hydraulic automatic leveling jack system
- Samsung 32" LED HDTV

CHASSIS

- (2) chassis batteries
- 4.88 "Quiet-Gear" rear axle ratio
- 150-gal. fuel tank (dual fill)
- 170-amp alternator
- 15,000-lb. hitch with 7-pin plug
- Allison GEN 4 3000 MH 6-speed shift pad
- Cummins ISL turbocharged 450 HP engine 1,250 lb. ft. torque at 1,400 RPM

- All-wheel ABS brakes
- Side-mounted radiator
- Daytime running lights
- Engine block heater
- Two-stage Jake brakes
- Polished aluminum wheels
- Raised rail for maximum storage
- Remote air connection
- Tag axle auto weight release
- Pre-wired for supplemental braking system
- Michelin 315/80R (front) 295/80R (rear) tires
- Full air front and rear brakes
- Automatic Traction Control (ATC)
- Spartan Mountain Master tag axle chassis
- Rear axle, 20,000-lb. rated, tag axle 12,000-lb.
- Reyco/Granning front axle 16,600-lb. wide track
- Reyco/Granning IFS independent front air suspension
- Hendrickson HTB rear air suspension
- Bilstein shocks (front/rear)

CONSTRUCTION

- 3/4" (7) ply plywood main floor decking
- 2-1/2" wall with welded tubular construction
- 2" x 4" floor truss construction
- Aluma-Tru Superstructure construction on 12"-16" centers
- Enclosed, insulated and heated floor and underbelly
- Flush-mounted slideout rooms
- Fully decked roof with 3/8" plywood
- Polar Pack insulation with reflective Flexfoil floor (R-33), roof (R-24), sidewalls (R-16)
- One-piece gel-coat fiberglass roof
- Sidewalls bolted to chassis frame structure
- Smooth high-gloss gel-coat fiberglass exterior walls
- Steel reinforced front cap and windshield frame
- X-Bridge frames engineered into chassis

EXTERIOR

- Carefree armored power entrance door awning
- Carefree armored slideout awnings
- Girard roof-integrated, armored, and powered roof awning
- CB antenna
- Chrome, heated, remote control, side-view mirrors
- Docking lights
- Aire-Secure travel locks for all passage doors
- Frameless dual pane-tinted safety-glass windows
- Full-width rear midflap
- Hydraulic automatic leveling jacks (dual positive)
- Hadley air horns
- Keyless entry with key fob and handle

- Slideout cargo tray
- Window awnings
- Exterior 32" LED HDTV with CD/DVD player and speakers
- Winegard in-motion roof-mounted satellite dome (HD-ready)
- Power bay door locks integrated with key fob and touch pad
- Xenon high visibility headlights

HEAT, POWER & WATER

- Aqua-Hot 450 hydronic water and heating system with in-floor heat throughout
- (3) 15,000-BTU low profile central A/Cs with heat pump, digital thermostat and drain tubes
- 5-watt solar panel (for chassis batteries)
- 50-amp quick-connect power cord with electric reel
- 2,800-watt Pure sine wave and 2,000-watt inverter with (8) 6V batteries
- Black holding tank sprayer
- Holding and fresh water tanks, radiant-heated
- Onan 12,500-watt diesel generator on sliding tray
- Onan auto generator start system
- Power auto rewind water hose
- Total coach dual system water filter
- Winterizing kit
- Glass mat batteries
- Surge protector switch

SAFETY EQUIPMENT

- Carbon monoxide alarm
- Deadbolt lock on entrance door
- Egress window
- Fire extinguisher
- Lap safety belts in living area
- Propane alarm
- Security system with glass shatter sensors
- Smoke alarm

OPTIONS

- Exterior freezer with slideout tray
- Free-standing table with 4 chairs and sofa
- Desk in lieu of lounge (N/A with dinette sofa ensemble)
- Leather chairs (2) (N/A with desk option or dinette sofa ensemble)
- Mobile eye
- Solar panels (dual-100 watt)
- Porcelain tile in bedroom
- Upgraded awning package (dual Girard Nova two-stage awnings)

SPECIFICATIONS

Floor Plan	GVWR (lbs.)	GCWR (lbs.)	Front GAWR (lbs.)	Rear GAWR (lbs.)	Tag Axle GAWR (lbs.)	Wheel Base	Overall Length	Overall Height w/ Air & Satellite	Exterior Width	Interior Headroom	Fresh Water Capacity (gal.)	Grey Waste Water Capacity (gal.)	Black Waste Water Capacity (gal.)
42DEQ	48,600	63,600	16,600	20,000	12,000	296"	43' 1"	12' 10"	101"	84"	95	50	50
42DLQ	48,600	63,600	16,600	20,000	12,000	296"	43' 1"	12' 10"	101"	84"	95	50	50
42RBQ	48,600	63,600	16,600	20,000	12,000	296"	43' 1"	12' 10"	101"	84"	95	50	50
44DLQ	48,600	63,600	16,600	20,000	12,000	320"	44' 11"	12' 9"	101"	84"	95	50	50
44SL	48,600	63,600	16,600	20,000	12,000	320"	44' 11"	12' 9"	101"	84"	95	50	50



After 40 years of building Jayco, the world's largest privately-owned RV manufacturer, our family is proud to stand behind every Entegra Coach we build with the Bontrager Family Promise. It's a promise to provide unfailing customer service — before, during and after the sale. To learn more, visit us online or see your local Entegra Coach dealership.

DERALD & WILBUR BONTRAGER
FOUNDERS OF ENTEGRA COACH



A PEACE-OF-MIND PROMISE

2-YEAR WARRANTY / 5-YEAR STRUCTURAL

Our family is proud to stand behind every Entegra Coach we build. That's why we back our motor coaches with a manufacturer's limited warranty, warranted to the original purchaser for two years (five years structural) from the original date of purchase or 24,000 miles of use, whichever comes first, against defects in materials and workmanship. Our commitment is to provide you with the highest level of products and services possible. We invite you to compare us with other manufacturers — we think you will find that our passion for your satisfaction is unmatched. For a copy of the limited warranty with full terms and conditions, ask your local Entegra Coach dealer.

3-YEAR PLATINUM-LEVEL ROADSIDE ASSISTANCE

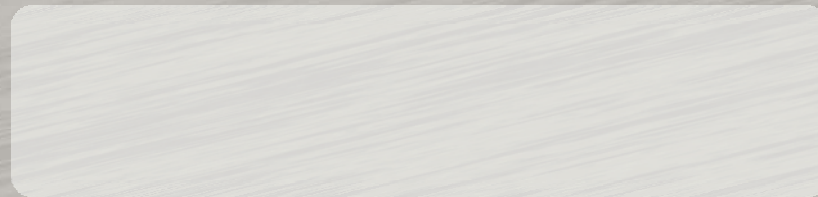
We promise peace of mind in countless ways with the Entegra Coach Customer First Roadside Assistance program, yours at no cost during your first three years of ownership. Offered through National Motor Club, the largest RV emergency road service in the country, this program gives you immediate access to dependable roadside assistance and support service with a simple phone call.

- 24/7 technical support and assistance technicians
- Service appointment assistance
- Mobile mechanic
- Emergency road towing and winching
- Delivery of emergency fluids
- Flat tire service
- Jump start/battery boost
- Lockout services
- Complete concierge service (including many types of errands and personal services)



ENTEGRA
COACH®

Without compromise.



Entegra Coach | P.O. Box 460 | Middlebury, IN 46540 www.entegracoach.com

Please Note: Information on this publication is the latest available at the time of printing. Entegra Coach reserves the right to make changes and to discontinue models without notice or obligation. RVs built for sale in Canada may differ to conform to Canadian codes. ©2012 Entegra Coach

2013 Anthem.cdr JM 6-12 Printed in the U.S.A.



Gross Vehicle Weight Rating (GVWR):

The maximum permissible weight of the motor coach, including the Unloaded Vehicle Weight (UVW) plus passengers, personal items, all cargo, fluids, options and dealer-installed accessories. The GVWR is equal to or greater than the sum of the UVW and the Cargo Carrying Capacity.

Gross Axle Weight Rating (GAWR):

The maximum allowable weight each axle assembly is designed to carry, as measured at the tires, therefore including the weight of the axle assembly itself.

Gross Combined Weight Rating (GCWR):

The maximum allowable combined weight of the motor coach used as a tow vehicle and the attached towed vehicle.

It is important for your safety and enjoyment that you are aware of the weights and tow ratings of the RV you select. Consult a competent advisor for questions or advice. Whether you are new to RVing or a veteran, get a feel for the performance of your RV before heading out on the roadways. When you tow a vehicle with your RV, you must drive differently than when you drive a single vehicle. Practice hooking up, driving, backing up and braking in a safe environment or seek out professional instruction. Entegra Coach affixes a weight label to each RV which lists weight information for that vehicle. Refer to that label to verify the vehicle will meet your requirements. See specification chart within this publication.