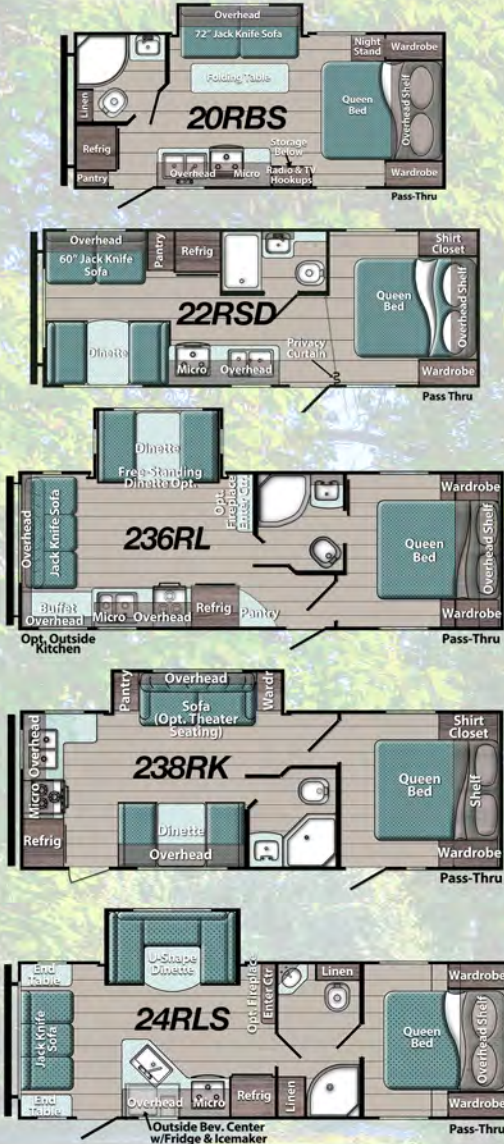


# Ultra-Lite

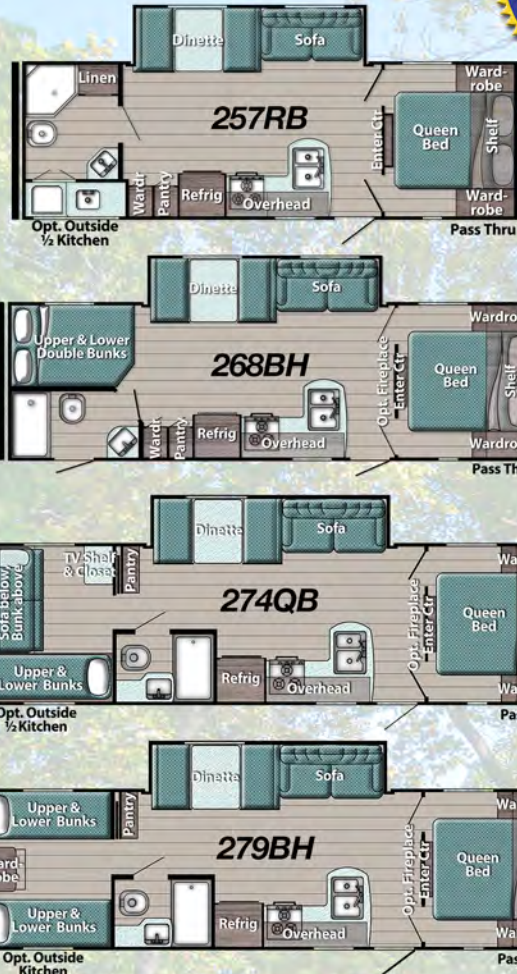
## TRAVEL TRAILERS

Our Ultra-Lite travel trailers pioneered innovations in lightweight construction, livability, and value-driven pricing a generation ago, and still lead the RV world with award-winning quality, comfort, durability, and economy.

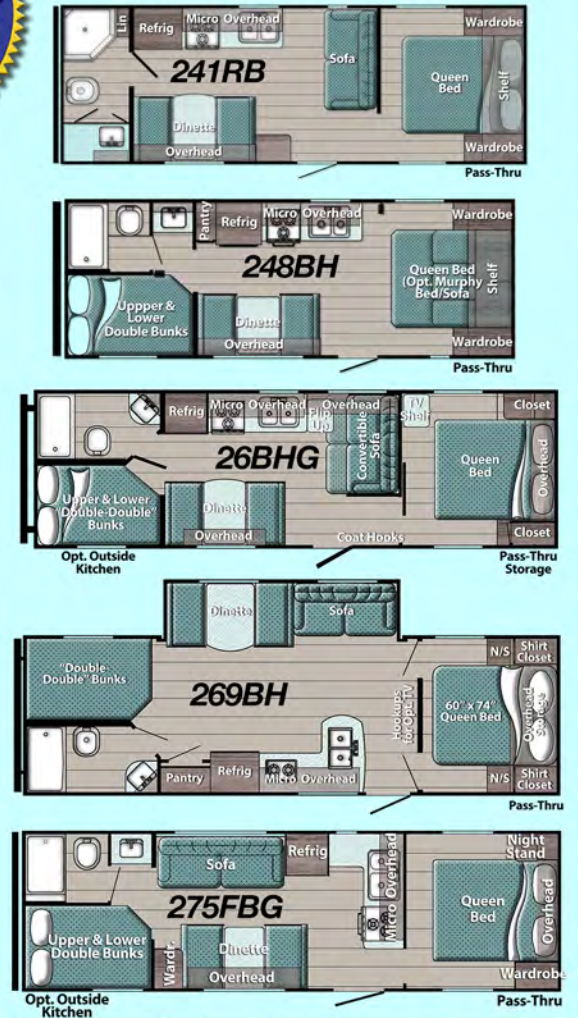
### Floor Plans



**Multi-Year Winner, RVDA Quality Circle Award** for industry-leading quality, sales, warranty, service, and parts



**NEW! Show Stoppers!**  
Our most economical choices



### Specifications

Specifications are approximate and subject to change. For actual weights, check weight sticker in each unit.

	20RBS	22RSD	236RL	238RK	24RLS	257RB	268BH	274QB	279BH	241RB	248BH	26BHG	269BH	275FBG
Length	22'11"	25'7"	28'1"	28'6"	28'10"	28'1"	29'6"	32'6"	32'6"	27'4"	26'7"	30'0"	29'11"	30'0"
Width	96"	96"	96"	96"	96"	96"	96"	96"	96"	96"	96"	96"	96"	96"
Ext. Height w/AC	11'2"	10'9"	11'3"	11'1"	11'1"	11'1"	11'1"	11'1"	11'1"	9'10"	10'4"	10'9"	11'1"	10'9"
Interior Height	6'8"	6'8"	6'8"	6'8"	6'8"	6'8"	6'8"	6'8"	6'8"	6'8"	6'8"	6'8"	6'8"	6'8"
Base Weight	4,360	4,064	5,140	4,815	5,050	TBD	5,177	6,230	6,210	4,031	3,899	4,930	5,460	5,100
Hitch Weight	400	530	930	640	580	TBD	660	840	810	478	500	590	670	710
Net Carry Cap.	3,027	3,466	2,790	2,865	4,330	TBD	2,483	1,610	1,600	3,487	3,601	2,660	2,210	2,610
Fresh Water	36	23	23	23	23	23	23	23	23	30	23	36	23	36
Grey Tank	29	36	36	36	36	36	36	37	37	36	36	37	37	37
Black Tank	29	36	36	36	36	36	36	37	37	36	36	37	36	37
Furnace BTUs	20,000	20,000	20,000	20,000	20,000	20,000	20,000	20,000	20,000	20,000	20,000	25,000	20,000	20,000
Water Heater	Tankless	Tankless	Tankless	Tankless	Tankless	Tankless	Tankless	Tankless	Tankless	Tankless	Tankless	Tankless	Tankless	Tankless
LP Tank lbs.	2 x 20	2 x 20	2 x 20	2 x 20	2 x 20	2 x 20	2 x 20	2 x 20	2 x 20	2 x 20	2 x 20	2 x 20	2 x 20	2 x 20

### Show Stoppers!



## Ultra-Lite Standard Features & Lite Value Package

### Interior

- White Vinyl-Clad Ceiling Panels
- Easy-Care Vinyl Wallcovering
- Craft-made Cabinetry w/Hardwood Cabinet Doors, Mortise & Tenon Joints
- Designer Drawer & Door Pulls
- High-Performance Vinyl Flooring
- Fabric-Wrapped Box Valances
- Laminated Countertops w/Vinyl T-Molding

### Heating & Cooling

- 20,000 BTU Gas Furnace
- Ducting/Wiring for Air Conditioning (Ducting N/A 20RBS, 22RSD, 241RB, 248BH)

### Safety

- Wall-Mount Fire Extinguisher
- Combined CO/LP Detector
- Smoke Detector
- Safety Chains

### Electrical

- 30 Amp Service, 45 Amp Converter/Charger
- Detachable Marine Power Cord
- Cable-Ready Connection
- Central Control Panel

### Furnishings

- Booth or U-Shaped Dinette (N/A 20RBS)
- Queen Bed & Bedspread
- Privacy Drape(s)
- Mini-Blind for Kitchen Window
- Jack-Knife Sofa
- Electric Slide-Out for Sofa & Dinette (257RB, 268BH, 269BH, 274QB, 279BH)
- Sofa Slide-Out (238RK)
- Dinette Slide-Out (236RL, 24RLS)

### Appliances

- Power Range Hood w/Light
- Microwave Ready
- 6 cu. ft. 2-Door Refrigerator/Freezer in 241RB, 248BH "Show Stoppers"
- 3-Burner Gas Range Top (2-Burner Range in "Show Stoppers")

### Bath

- Foot-Flush Toilet
- Power Bath Vent
- Neo-Angle Shower w/Glass Door (20RBS, 236RL, 238RK, 241RB, 24RLS, 257RB)
- Skylight over Tub
- Shower Curtain

### Exterior

- Unibody Construction w/steel hurricane straps tying walls to roof and floor
- 4 1/4" x 1/4" Steel Header in Main Slides
- Pass-Thru Storage (most models)
- Diamond Plate Lower Front
- One-Piece Synthetic Vinyl Roof
- Radius Safety Glass Windows
- (4) 14" Tires/Rims
- 2 x 20 lb. LP Bottle & Cover

### Lite Value Package (included, required)

- Radiant LED Interior Lighting Package
- Electric Awning w/LED Lighting (N/A 241RB, 248BH, 26BHG, 269BH)
- 10.7 cu. ft. Everchill Refrigerator/Freezer (N/A 241RB, 248BH)
- Molded Countertops w/Undermount Sink (N/A 241RB, 248BH, 26BHG, 269BH)
- Tankless Water Heater
- Power Hitch Jack (N/A "Show Stoppers")
- Blue Tooth Radio w/2 Inside & 2 Outside Speakers (N/A "Show Stoppers")
- Pleated Privacy Shades
- Microwave Oven
- Digital TV Antenna w/Power Booster
- (4) Stabilizer Jacks
- 13,500 BTU Air Conditioner
- Pull-Out Sprayer Faucet (N/A "Show Stoppers")
- Swing-Away Grab Handle
- Frosted Window in Entry Door
- Designer Backsplash in Kitchen
- Bath Skylight
- Tub Surround
- Tech-Ready Upgrades:
  - Wi-Fi-Ready Connections
  - Solar Panel Prep
  - Back-Up Camera Hookups
  - Satellite TV Ready
  - Multiple USB ports
- Friction Hinge Entry Door
- Tinted Windows
- Upgraded Exterior Graphics
- Radial Tires
- Bunk Mats (Bunk floor plans)
- Frosted Glass Kitchen Cabinet Doors
- Upgraded Furniture Package

## Ultra-Lite Options

- Spare Tire & Wheel
- Aluminum Wheels
- 3-Burner Range w/Oven & Glass Top (N/A "Show Stoppers")
- Battery Disconnect Switch
- Sink Cover (N/A "Show Stoppers")
- SolidStep® Entry (N/A "Show Stoppers")
- 15,000 BTU Air Conditioner
- 6 cu. ft. 2-Door Gas/Electric Refrigerator/Freezer in place of 10.7 cu. ft. 110V Fridge
- Blue Tooth Soundbar in place of Radio (N/A 238RK, 241RB, 248BH)
- Outside Kitchen (236RL, 24RLS, 26BHG, 275FBG, 279BH)
- 1/2 Outside Kitchen (257RB, 274QB)
- Outside Beverage Center w/Fridge & Icemaker (24RLS)
- Murphy Bed (248BH)
- Theater Seating in place of Jack Knife Sofa (238RK only)
- Outside Shower
- Fiberglass Exterior Walls w/Fender Skirt (N/A 24RLS)
- Shower Pan in place of Tub
- Second Swing-Away Grab Handle
- 50-Amp Wiring for 2nd AC (274QB, 279BH)
- Electric Fireplace (236RL, 24RLS, 268BH, 274RB, 279BH)



# Ultra-Lite



Relax -  
You're  
Covered!

### With Our Exclusive Three-Year Limited Structural Warranty

In addition to a standard one-year warranty against defects in materials and/or workmanship in construction and original components under normal use, our exclusive Gulf Stream Coach Warranty gives you THREE YEARS of coverage on key structural components (sidewalls, front and rear walls, roof, and floor) of your new Ultra-Lite travel trailer.

Extended protection is also offered by many manufacturers that supply components for Ultra-Lite units, including the refrigerator, antenna, furnace, water heater, awning, air conditioner, range, microwave, and more. See the full warranty statement for details.



Scan this  
code for  
floor  
plans,  
specs,  
& features



QUALITY • VALUE • INNOVATION

[www.gulfstreamcoach.com](http://www.gulfstreamcoach.com)

503 South Oakland Avenue, Nappanee, IN 46550

Your Gulf Stream Coach Dealer:

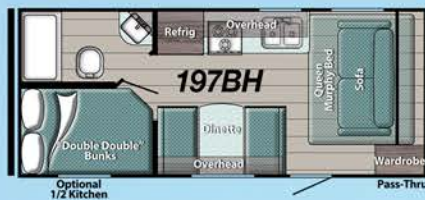
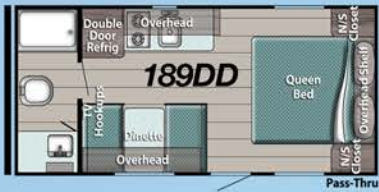
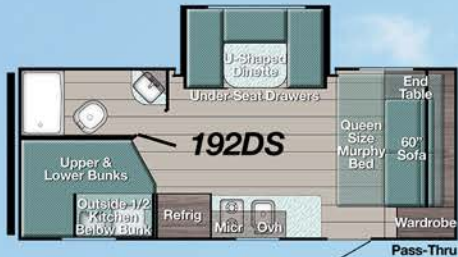
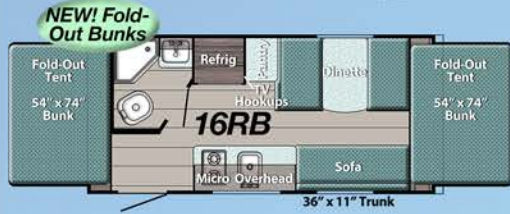
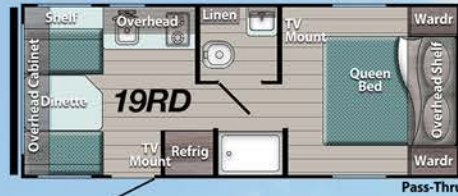
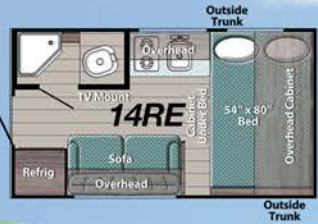
**NOTE: Our Exclusive "SHOW STOPPER" floor plans use a modified list of standard features and limited options to provide RVers with the most economical pricing. Check with your dealer for complete information on "Show Stopper" features.**

Specifications, materials, and features are subject to change without notice. Some optional equipment shown. Contact a Gulf Stream Coach dealer or visit [www.gulfstreamcoach.com](http://www.gulfstreamcoach.com) for more information. Not responsible for typographical errors. © 2023 Gulf Stream Coach, Inc., Nappanee IN USA. #ULT122023



# Super Lite

## Floor Plans



Scan me for more info



As our most affordable series, Super Lite Travel Trailers have features and floor plans perfect for tight budgets, first-timers, and casual campers.

## Standard Features & Packages

### Standard Features

- High-Performance Vinyl Flooring
- Fabric-Wrapped Box Valances
- Craft-made Cabinetry w/Designer Pulls
- Easy-Care Wall Vinyl
- Laminated Countertops w/Vinyl T-Molding
- White Kitchen Sink
- 30 Amp Svc w/45 Amp Converter/Charger
- Wall-Mount Fire Extinguisher
- Combo CO/LP Detector
- Smoke Detector
- Monitor Panel
- Pleated Shades
- Seamless Synthetic Vinyl Roof
- Diamond Plate Lower Front
- Radius Safety Glass Windows
- Safety Chains
- Single Entry Step

### Camping Package (Included, required)

- 2-Burner Gas Cooktop
- Microwave Oven
- Tankless Water Heater
- 13,500 BTU Roof Air Conditioner
- 20 lb. LP Gas Tank
- Shower & Toilet
- (2) Rear Stabilizer Jacks
- Power Awning
- Teddy Bear Mattress(es) (Bunk models)
- Wood Ceiling Trim
- 6'8" Interior Height
- High-Rise Kitchen Faucet
- 26" Friction Hinge Entry Door
- Central Control Panel
- Radial Tires
- LED Interior Lights
- 20,000 BTU Furnace (N/A 177BH, 178RB)
- Multiple USB Ports
- Foot Pad on Front Jack

### Convenience Package (required)

- 10 cu. ft. 12V Refrigerator (197BH, 192DS, 19RD, 199RK)
- TV Antenna
- Swing-Away Grab Handle
- Pot & Pan Drawer (189DD, 199DD, 19RD)

### Rocky Mountain Edition (189DD, 199DD, 197BH only)

- Overslung Axle
- Knobby Tires
- Fender Covers
- Wheel Wells
- Double Entry Step
- Upgraded Wheels
- Bottom Diamond Plate Metal

## Popular Options

- Blue Tooth Radio w/2 Interior & 2 Exterior Speakers, plus Prep for Solar Panel & Prep for Backup Camera
- Bedspread
- Spare Tire
- Fiberglass Walls
- Double SolidStep® Entry Step (Std. 14RE)
- 1/2 Outside Kitchen (197BH, 192DS only)
- Front Power Hitch Jack



QUALITY • VALUE • INNOVATION

## Specifications

Specifications are approximate and subject to change. For actual weights, check weight sticker in each unit.

	14RE	16RB	189DD	199DD	197BH	199RK	19RD	192DS	177BH	178RB
Length	15'10"	19'1"	20'11"	20'11"	22'2"	22'2"	23'1"	23'2"	20'11"	20'11"
Width	90"	84"	96"	96"	96"	96"	96"	96"	96"	96"
Height w/AC Int. Height	10'3"	10'4"	10'4"	10'4"	10'8"	10'8"	10'8"	10'6"	10'4"	10'4"
Base Weight	2,780	3,170	2,996	3,100	3,663	3,520	3,552	3,910	2,810	2,920
Hitch Weight	300	340	350	360	638	490	390	390	330	360
Net Carry Cap.	1,020	670	854	760	1,395	1,370	1,238	1,238	1,020	1,080
Fresh Water	23	23	23	23	23	23	23	23	23	23
Grey Tank	36	27	36	36	36	36	36	36	36	36
Black Tank	36	27	36	36	36	36	36	36	36	36
Furnace BTUs	20,000	20,000	20,000	20,000	20,000	20,000	20,000	20,000	(Elec. FP)	(Elec. FP)
Water Heater	Tankless	Tankless	Tankless	Tankless	Tankless	Tankless	Tankless	Tankless	Tankless	Tankless
LP Tank lbs.	20	20	20	20	20	20	20	20	20	20

Specifications, materials, and features are subject to change without further notice. Not responsible for typographical errors. Visit [www.gulfstreamcoach.com](http://www.gulfstreamcoach.com) or your dealer for more information. ©2023 Gulf Stream Coach, Nappanee, IN 46550 USA • #AMESUP122023