



2022 TRAVEL TRAILERS



AFFORDABLE QUALITY... RICH HERITAGE – SINCE 1941



25RS



20RB



BUILT TO LAST!

Every Shasta is assembled with the pride and quality craftsmanship you would expect from a brand that has been building trailers since 1941.

Only the best materials and construction methods are used during the manufacturing process. Every unit is put through a rigorous inspection procedure and is tested to ensure the highest of standards.

We utilize premium wood products like 2x2 wall studs on 16" centers, 5/8" thick tongue and groove plywood floors, not chip board! The 5" wood roof trusses support a full walk on 3/8" roof decking wrapped with a seamless PVC membrane that has a 20 year limited warranty against defects.

Rest easy and rest assured your Shasta trailer is built right and built to last!

25RS



FOR MORE
INFORMATION, PICTURES,
AND 360 VIRTUAL TOURS
VISIT SHASTARVING.COM



FOLLOW US



25RS

20RB





OWNERS TOP STANDARD FEATURES

LIPPERT ONE CONTROL MONITOR PANEL

- Control your trailer with your smart phone
- Real time diagnostics
- Control your RV in the palm of your hand
- Stay informed with custom reminders and maintenance notifications
- Pin lockout for security

BLUETOOTH SOUND BAR

- Superior sound quality and bluetooth capabilities.

OVERSIZED LIGHTED PASS THROUGH STORAGE

- Industry leading front passthrough storage space with access from outside your trailer, and inside easy access under the queen bed.

PRE WIRED FOR WI-FI, BACK UP CAMERA AND SOLAR

- To make your experience more comfortable and enjoyable we have prepped all shasta trailers with these 3 important features.

DOUBLE BOWL STAINLESS STEEL KITCHEN SINK WITH PULL DOWN SPRAYER

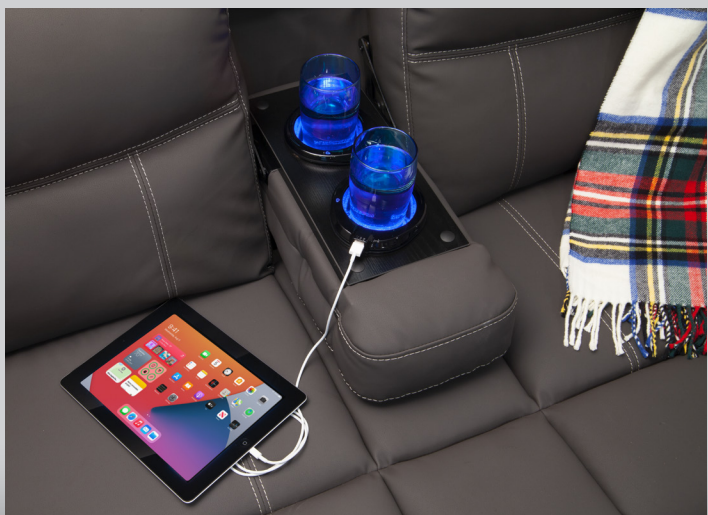
- Easily wash your hands and necessary produce with this oversized sink. No need to worry about permanent damage to your sink from hot pans with a true stainless-steel sink!

LIGHTED CUPHOLDERS WITH TWO USB CHARGERS

- Cozy up on shasta's jack knife sofa while charging your phone or tablet and enjoying your favorite beverage.

TUFFLEX PVC ROOFING MATERIAL WITH LIFETIME LIMITED WARRANTY

- High solar reflectivity to keep your trailer cool on hot summer days.
- Puncture and tear resistant keeping your mind at ease around campground trees, hailstorms, and other every day situations your RV will go through.
- High thermal emissivity to make your roof last longer.
- Sustainable material to shrug off substances like tree sap that makes its way onto your roof. Tufflex is also 100% recyclable!





TOP DESIRED OPTIONAL FEATURES

STEP UP PACKAGE (REQUIRED)

- **Power Tongue Jack** - Efficiently set up camp with the touch of a button.
- **Solid Step** - Safely enter and exit your trailer with confidence on this secure solid step with enlarged steps for better foot placement.
- **Oven** - Cook what you want, when you want! No matter the weather this oven allows you the freedom to enjoy home cooked meals in all weather and any time of day.

ADDITIONAL TELEVISIONS, 32" AND 24"

- Optional LED Televisions are available.

GAS/ELECTRIC REFRIGERATOR

- Optional 8 cu ft gas/electric IPO 10.7 cu ft 12V refrigerator.

FLIP DOWN STORAGE RACK

- When camping or traveling you can never go wrong with extra storage. Easily flip this storage rack down to haul your cooler, extra firewood, generator, or any of your camping needs!

MINI OUTSIDE KITCHEN (25RS, 26BH, 30QB)

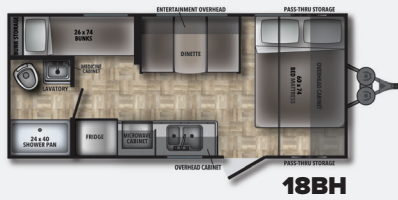
- Including a large countertop, running hot and cold water, plus an outside fridge. Shasta has offered the perfect space for entertainment. A great space to prep your food, drink an ice cold beverage all while enjoying the amazing outdoors.



FOR MORE
INFORMATION, PICTURES,
AND 360 VIRTUAL TOURS
VISIT SHASTARVING.COM

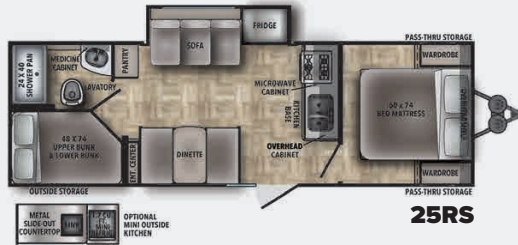


BUNKHOUSE FLOORPLANS



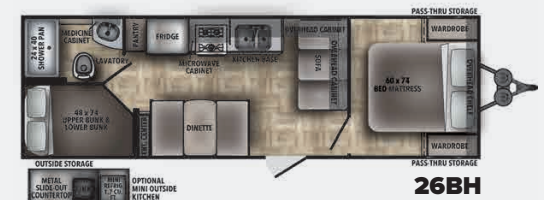
18BH

LENGTH 23'1" | HEIGHT 10'6" | UVW 3,210
GVWR 5,050 | HITCH WEIGHT 350
TANKS: FRESH 42, BLACK 36, GREY 36



25RS

LENGTH 30'3" | HEIGHT 11' | UVW 4,890
GVWR 6,750 | HITCH WEIGHT 690
TANKS: FRESH 42, BLACK 36, GREY 72



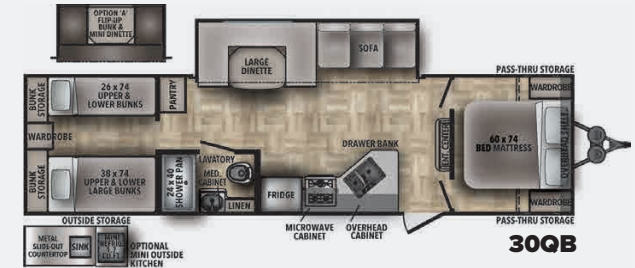
26BH

LENGTH 30'3" | HEIGHT 11' | UVW 4,405
GVWR 6,250 | HITCH WEIGHT 480
TANKS: FRESH 42, BLACK 36, GREY 36



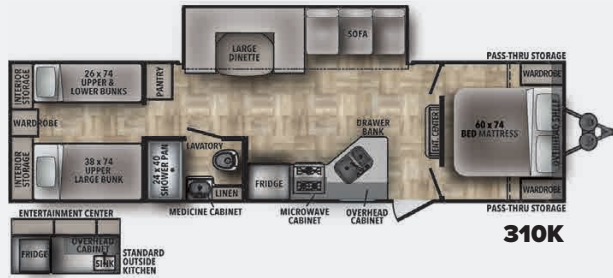
26DB

LENGTH 31'8" | HEIGHT 11' | UVW 5,280
GVWR 6,950 | HITCH WEIGHT 580
TANKS: FRESH 42, BLACK 36, GREY 36



30QB

LENGTH 36' | HEIGHT 11'2" | UVW 6,090
GVWR 7,750 | HITCH WEIGHT 780
TANKS: FRESH 42, BLACK 36, GREY 36



310K

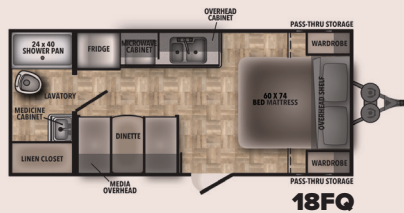
LENGTH 36' | HEIGHT 11'2" | UVW 6,165
GVWR 7,750 | HITCH WEIGHT 700
TANKS: FRESH 42, BLACK 36, GREY 36



32DS

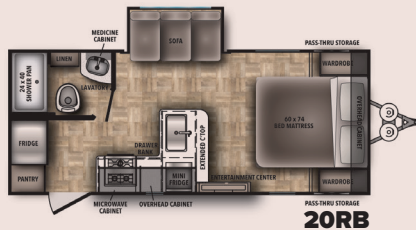
LENGTH 36'7" | HEIGHT 11'5" | UVW 7,254
GVWR 9,530 | HITCH WEIGHT 780
TANKS: FRESH 42, BLACK 36, GREY 36

COUPLES FLOORPLANS



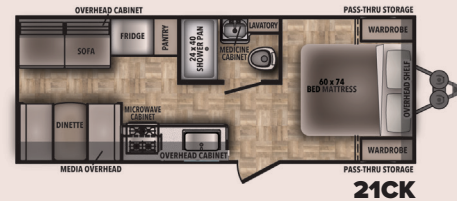
18FQ

LENGTH 23'1" | HEIGHT 10'6" | UVW 3,235
GVWR 3,235 | HITCH WEIGHT 325
TANKS: FRESH 42, BLACK 36, GREY 36



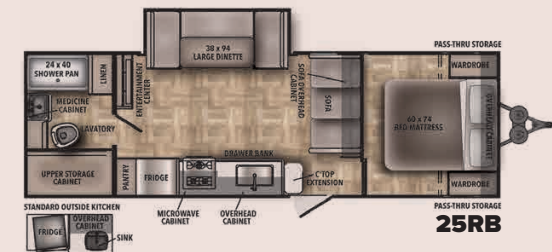
20RB

LENGTH 24'2" | HEIGHT 11' | UVW 4,417
GVWR 6,350 | HITCH WEIGHT 455
TANKS: FRESH 42, BLACK 36, GREY 36



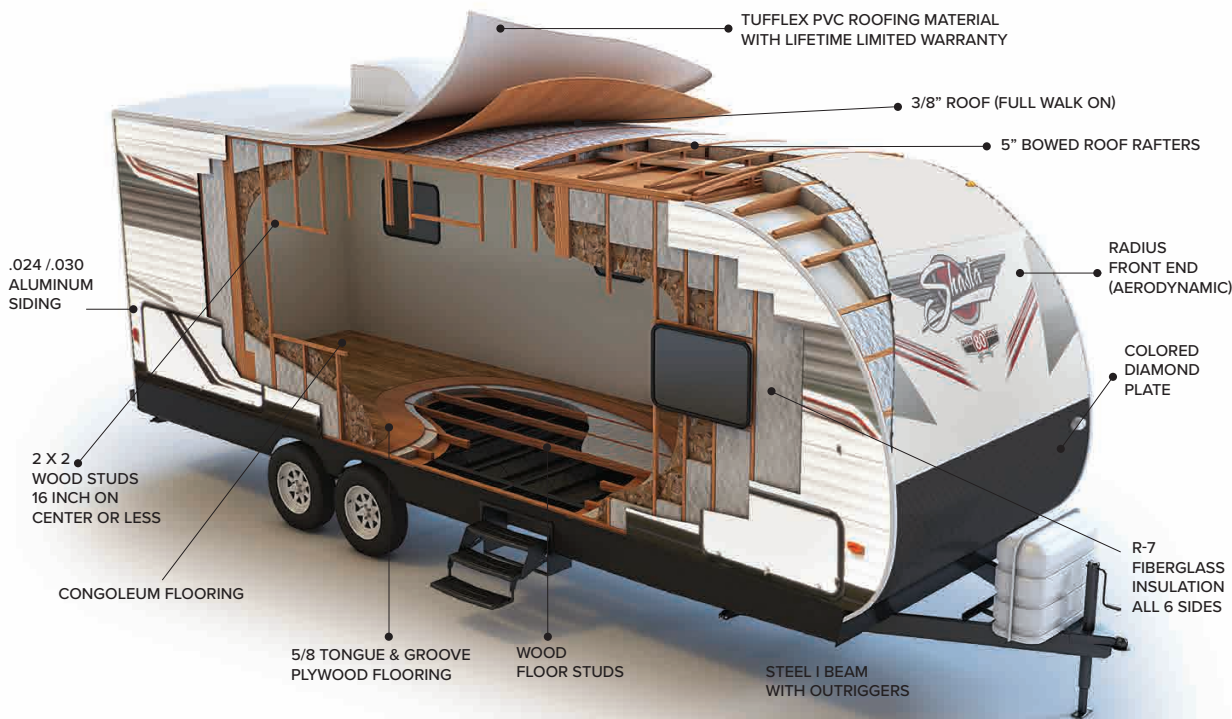
21CK

LENGTH 26'2" | HEIGHT 11' | UVW 3,890
GVWR 5,750 | HITCH WEIGHT 500
TANKS: FRESH 42, BLACK 36, GREY 36



25RB

LENGTH 30'3" | HEIGHT 11' | UVW 5,238
GVWR 6,750 | HITCH WEIGHT 580
TANKS: FRESH 42, BLACK 36, GREY 36



BUILT TO LAST!

Every Shasta is assembled with the pride and quality craftsmanship you would expect from a brand that has been building trailers since 1941.

Only the best materials and construction methods are used during the manufacturing process. Every unit is put through a rigorous inspection procedure and is tested to ensure the highest of standards.

We utilize premium wood products like 2x2 wall studs on 16" centers, 5/8" thick tongue and groove plywood floors, not chip board! The 5" wood roof trusses support a full walk on 3/8" roof decking wrapped with a seamless PVC membrane that has a lifetime limited warranty against defects.

Rest easy and rest assured your Shasta trailer is built right and built to last!



FOLLOW US

STANDARDS, OPTIONS AND PACKAGES

STANDARDS EXTERIOR

- 110 Outlet
- Front Colored Rock Guard
- Power Awning w/LED Light
- Color Matching Entry and Baggage Doors
- Magnetic Baggage Door Catches
- Bumper with Drain Hose Carrier and End Caps
- Straight Axle with Electric Brakes
- E-Z Lube Hubs
- Radial tires
- Radius Entry Door with Screen
- Molded Rain Gutter with Extra Long Spouts
- Black-Framed Radius Safety Glass Windows
- XL Grab Handle
- Outside Shower
- Exterior Cable Hook Up

STANDARDS INTERIOR

- LED Interior Lights
- Pleated Shades
- Decorative Cabinet Pulls
- Pocket-Bored and Screwed Cabinets
- Full Extension Ball Bearing Drawer Guides

- Blackout Shades in Bedroom
- Box Valances in Living Area
- Jack Knife Sofa
- USB Charging Stations
- Cable TV Hook-up in Living Area and in Bedroom
- RG6 Coaxial Cable
- Congoleum Flooring
- Under Bed Storage
- Sink Cover
- Decorative Bedspread

STANDARDS KITCHEN

- 3-Burner Cook Top Stove with Glass Cover
- Oversized Stainless Steel Residential Sink with Pull Down Sprayer
- Range Hood with Exhaust Fan
- Decorative Back Splash

STANDARDS BATHROOM

- Shower & Surround
- Powered Roof Vent
- Marine Foot Flush Toilet
- Medicine Cabinet with Mirror
- Large Sink
- Skylight

STANDARDS POWER SYSTEMS

- 12V Demand Water Pump
- Auto-Ignition Furnace with Wall Thermostat
- Water Heater Bypass
- Water System Winterization Kit
- 18K BTU or 25K BTU Furnace

STANDARDS CONSTRUCTION

- .024/.030 Aluminum Exterior Skin
- Radius Wood Rafters
- R-7 Fiberglass Insulation in All Walls, Floor and Roof
- Aerodynamic Radius Front Profile
- 16" On-Center Wood Wall Studs
- Electric Slide Rooms
- Tufflex PVC Roof Material with Lifetime Limited Warranty
- 8' Exterior Width
- Cambered Steel I-Beam Frame

STANDARDS SAFETY FEATURES

- Co2 Detector
- LP Leak Detector
- Fire Extinguisher
- Smoke Alarm
- CPAP Docking Station

OPTIONS EXTERIOR

- Electric Stabilizing Jacks
- Aluminum Wheels
- RVQ Grill
- 30# LP Bottles IPO Standard 20# (N/A on 18' Models)
- 15K BTU A/C
- Mini Outside Kitchen (25RS, 26BH, 30QB)
- Flip Down Storage Rack
- 2nd AC Prep 26 ft and Up
- 15K BTU Ducted AC
- 2nd 13.5 BTU AC with 50 AMP Service 26 Foot and Up
- Heated/Enclosed Underbelly (N/A 18's)

OPTIONS INTERIOR

- Fireplace
- 24 & 32" TVs
- Junior Dinette IPO Lower Bunk (30QB, 32DS)
- 8 cu ft Gas/Electric Refrigerator

STEP UP PACKAGE - REQUIRED

- Glass Cooktop/Oven
- Solid Step
- Power Tongue Jack

CAMPING WITH EASE PACKAGE (REQUIRED)

- 6 Gallon Gas/Electric DSI HW Heater
- Microwave Oven
- 13.5 BTU Ducted A/C (25' and above)
- Seamless Countertops
- Bluetooth Sound Bar
- USB Charging System
- Solar & Backup Camera Prep Package
- (4) Stabilizer Jacks
- 10 cu ft Residential Refrigerator
- Lippert One Control
- Double 20# LP Bottles w/ABS Cover (N/A on 18's)
- Under-Mount Kitchen Sink
- Sink Cover
- Spare Tire
- Roadside Assistance

SPECIFICATION DEFINITIONS

GVWR (Gross Vehicle Weight Rating) – is the maximum permissible weight of the unit when fully loaded. It includes all weights, inclusive of all fluids, cargo, optional equipment and accessories. For safety and product performance do NOT exceed the GVWR.

GAWR (Gross Axle Weight Rating) – is the maximum permissible weight, including cargo, fluids, optional equipment and accessories that can be safely supported by a combination of all axles.

UVW (Unloaded Vehicle Weight)* – is the typical weight of the unit as manufactured at the factory. It includes all weight at the unit's axle(s) and tongue or pin and LP Gas. The UVW does not include cargo, fresh potable water, additional optional equipment or dealer installed accessories.

*Estimated Average based on standard build optional equipment.

CCC (Cargo Carrying Capacity)** – is the amount of weight available for fresh potable water, cargo, additional optional equipment and accessories. CCC is equal to GVWR minus UVW. Available CCC should accommodate fresh potable water (8.3 lbs per gallon). Before filling the fresh water tank, empty the black and gray tanks to provide for more cargo capacity.

**Estimated average based on standard build optional equipment. Each Forest River RV is weighed at the manufacturing facility prior to shipping. A label identifying the unloaded vehicle weight of the actual unit and the cargo carrying capacity is applied to every Forest River RV prior to leaving our facilities.

The load capacity of your unit is designated by weight, not by volume, so you cannot necessarily use all available space when loading your unit.



THE SHASTA STORY - A PROUD HERITAGE

In 1941, when Californian Robert Gray built the first Shasta "house trailer" to be used as mobile military housing, he had no idea his homes on wheels would play a major role in establishing a billion-dollar industry. Or that the little trailers would spark wanderlust in Americans that would carry them across the miles and into the next century. Shasta was, and remains, an important player in the ultimate American Dream; the freedom and desire to roam, explore and enjoy well earned leisure time with the people we love. In the 1950s and 60s, the toaster-on-wheels look of the original Shasta trailer was the most recognizable shape on the road. There were other RV brands, but only Shasta was distinguished by those wings that signified flight and freedom. Through the 1960s and 70s, RVs became bigger and better, America's burgeoning

highway system evolved into interstates, and the wanderlust grew ever stronger. In the 80s and 90s, RVs continued to evolve into safer, more sophisticated homes away from home, with more features and greater comfort than ever.

Today, 70 years and three generations of Shasta owners later, Americans have the desire to travel like never before. Motivated by the rediscovery of our families and renewal of ourselves, we still respond to the call of the road.

In terms of product, the company has come a long way from the "toasters-on-wheels". Today's Shastas have sleek profiles and amenities that were unimaginable a generation ago. Yet, it is the memorable image of the little trailer with wings that brings each of us something

no other manufacturer has to offer; nostalgia.

As the industry's longest producer of recreational vehicles, Shasta has manufactured hundreds of thousands of RVs. We've earned our success in the best possible way – through experience... more experience than any other RV company in the world. Shasta's respected name prevails in today's fast-moving RV industry because of that experience, combined with a strong, service oriented dealer network, a loyal, repeat-customer base, and our outstanding association with our parent company, Forest River. Shasta is proud of its longevity, and we pledge to continue to listen and to improve our commitment to satisfying America's wanderlust, and to persist in creating generations of memories to come.



FOLLOW US

CUSTOMER SERVICE IS OUR #1 PRIORITY!



PRE-DELIVERY INSPECTION

20,000 square feet of quality assurance. The bare essentials for a premium product. This state-of-the-art facility gives immediate daily feedback to production for quality assurance in every unit built.

FREE MEMBERSHIP to Forest River Owners' Group

www.forestriverfrog.com



All information contained in this brochure is believed to be accurate at the time of publication. However, during the model year, it may be necessary to make revisions and Forest River, Inc., reserves the right to make all such changes without notice, including prices, colors, materials, equipment and specifications as well as the addition of new models and the discontinuance of models shown in this brochure. Therefore, please consult with your Forest River, Inc., dealer and confirm the existence of any materials, design or specifications that are material to your purchase decision. ©Copyright 2016 Shasta, a Division of Forest River Inc – All Rights Reserved.



Learn More
Scan this barcode using a QR Reader on your smart phone to learn more about Forest River.



A Berkshire Hathaway company.

SHASTA OWNER "DIGITAL KIT" APP

Now you can have your Owner's Manual with you wherever you are. Download our FREE App from the App Store or Google Play and you'll have the information right at your fingertips.



24/7 EMERGENCY ROADSIDE ASSISTANCE WITH VEHICLE PURCHASE*

- | | |
|-----------------|-------------------------|
| TOWING | WINCH-OUT |
| JUMP-STARTS | MOBILE MECHANIC |
| TIRE CHANGES | TECHNICAL SUPPORT |
| FLUID DELIVERY | DEALER LOCATOR SERVICES |
| LOCKOUT SERVICE | |



*VALID FOR 1 YEAR FROM DATE OF PURCHASE

CUSTOMER SATISFACTION



www.ForestRiverBuyLocal.com

YOUR SHASTA DEALER:

Shasta Recreational Vehicles • 105 14th Avenue • Middlebury, IN 46540 • (574) 825.7178 • www.ShastaRVing.com