

# ZINGER



**CROSSROADS™**  
*Recreational Vehicles*



259FL Back to Front



219RB Interior



298FB Bedroom



298FB Bathroom



320FB Interior



# CROSSROADS

*Recreational Vehicles*

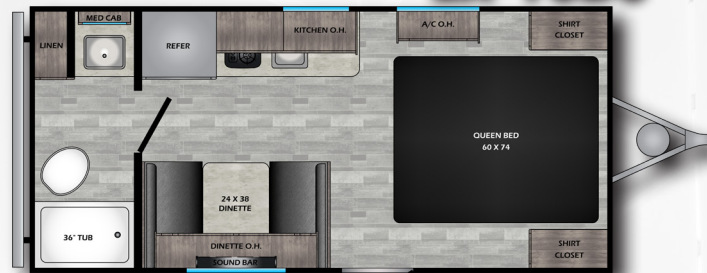
## LITE SINGLE AXLES:



**ZR-18BH**



**ZR-18DS**



**ZR-18RB**



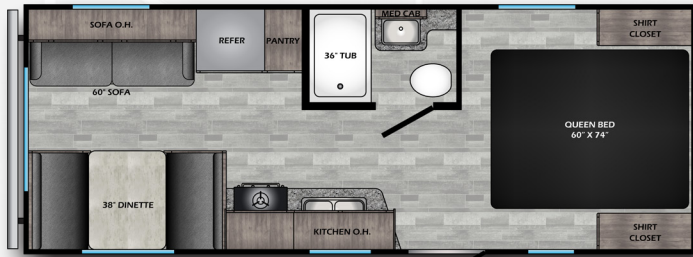
**ZR-18RD**



**ZR-18RK**



## LITE:



**ZR-211RD**



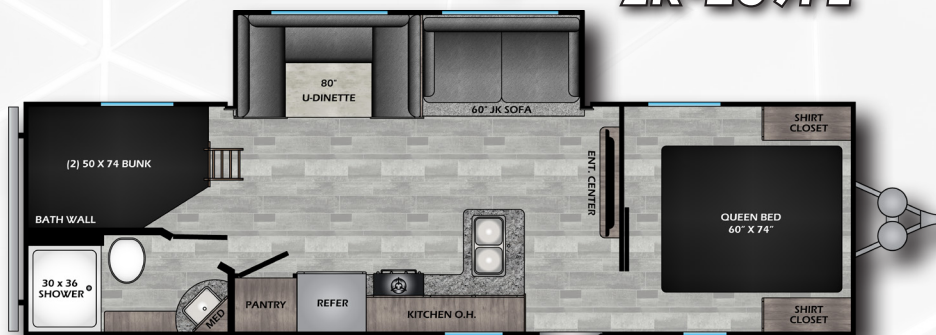
**ZR-219RB**



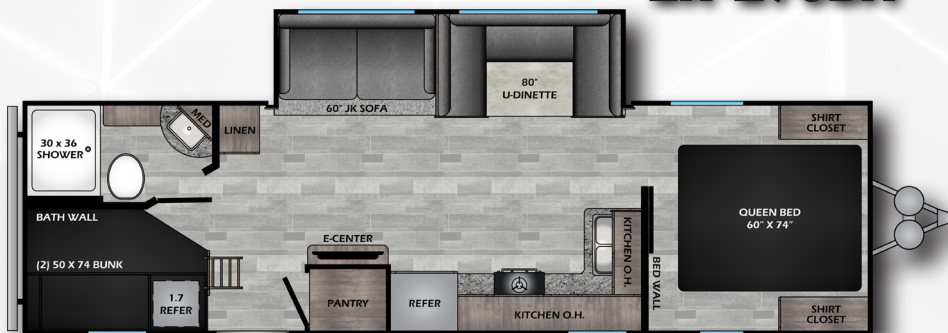
**ZR-252BH**



**ZR-259FL**

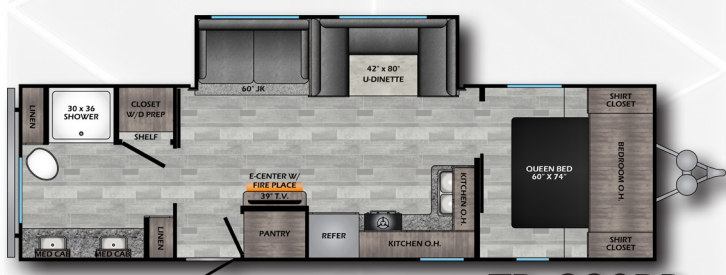


**ZR-270BH**

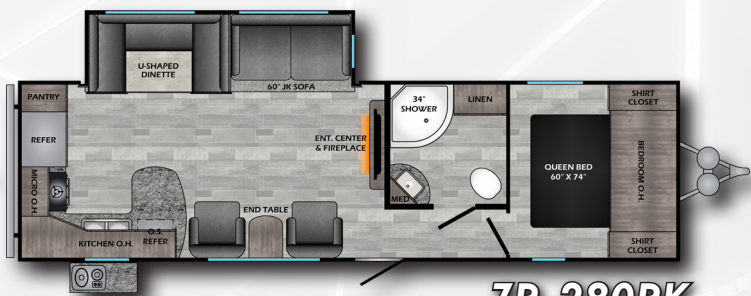


**ZR-280BH**





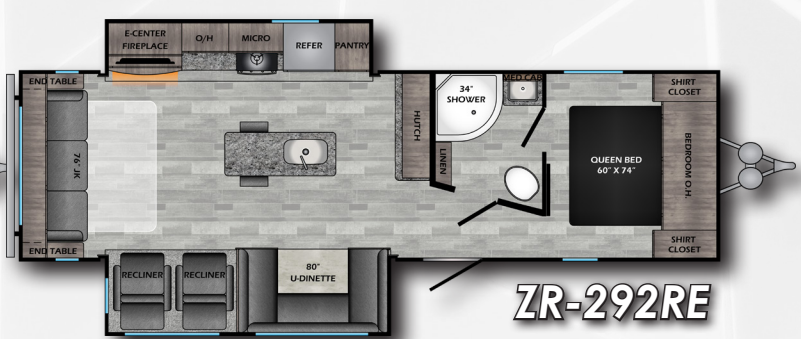
**ZR-280RB**



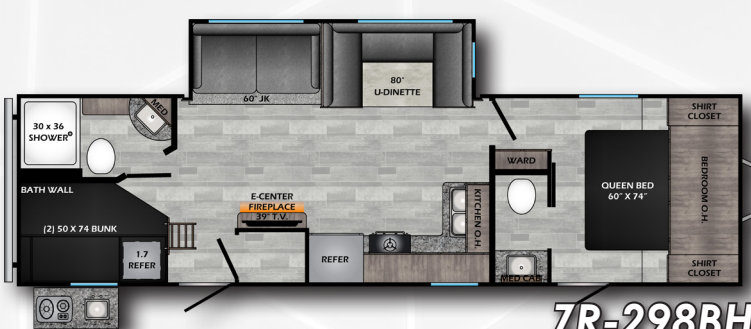
**ZR-280RK**



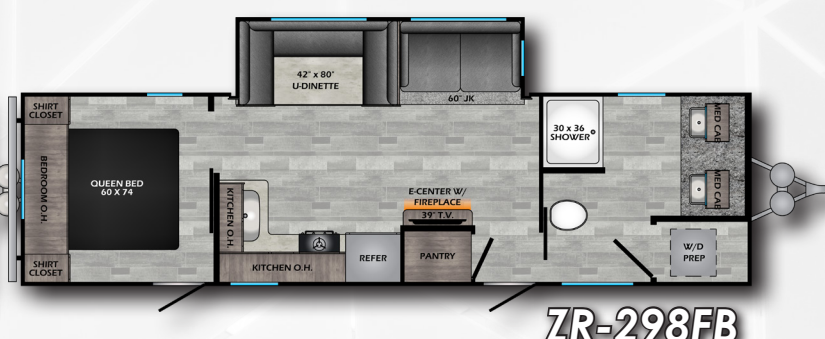
**ZR-290KB**



**ZR-292RE**



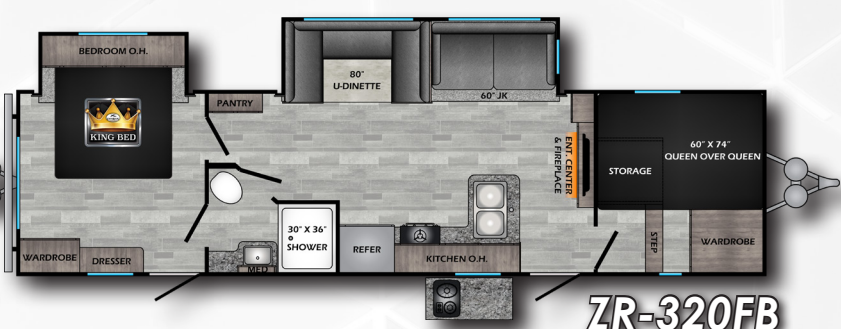
**ZR-298BH**



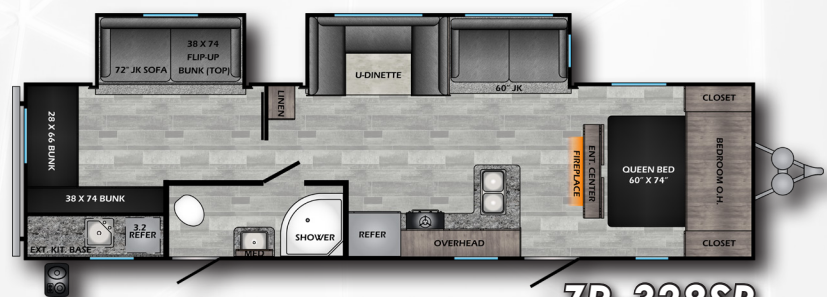
**ZR-298FB**



**ZR-299RE**



**ZR-320FB**



**ZR-328SB**

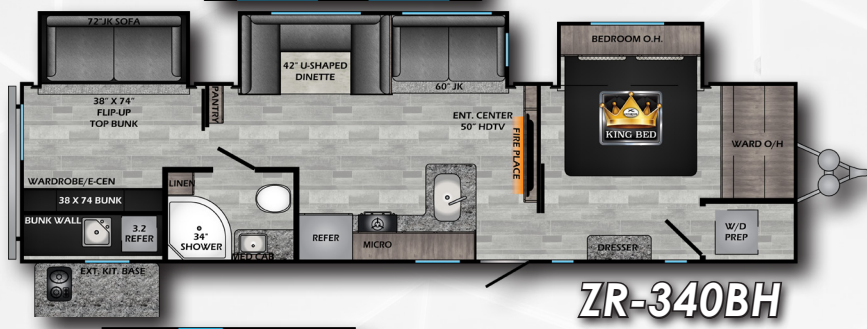




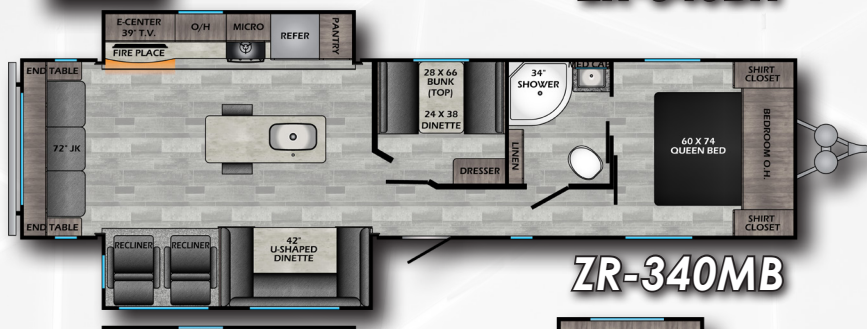
**ZR-331BH**



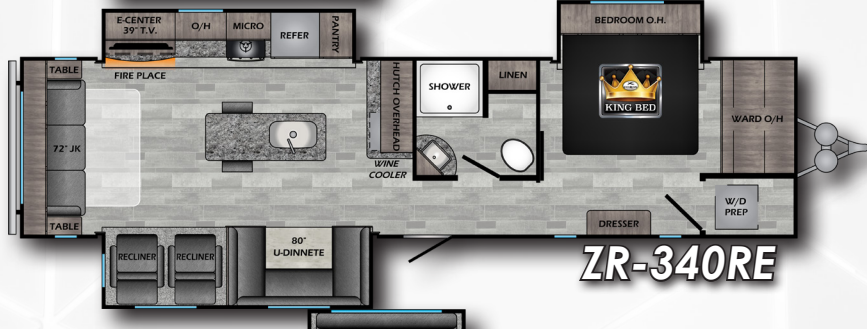
**ZR-333DB**



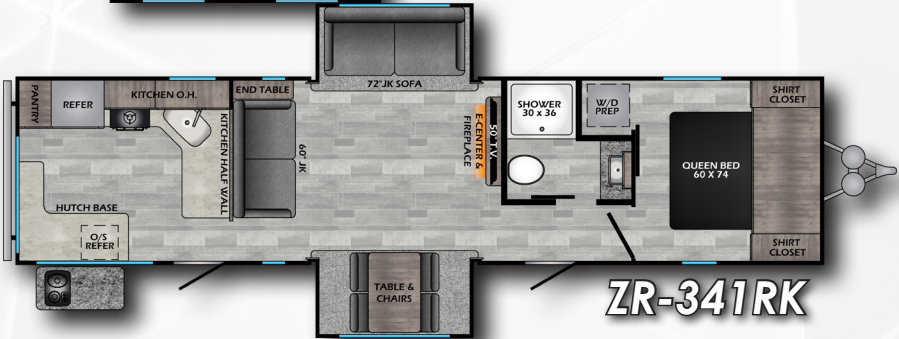
**ZR-340BH**



**ZR-340MB**



**ZR-340RE**



**ZR-341RK**



## ZINGER LITE

MODEL	18BH	18DS	18RB	18RD	18RK	211RD	219RB	252BH	259FL	270BH	280BH
DRY WEIGHT	3362	4442	3430	3406	3527	4364	4578	4921	5208	6132	6477
HITCH	426	606	388	478	476	552	470	564	880	738	680
LENGTH	21' 0"	22' 6"	21' 0"	21' 0"	22' 6"	25' 2"	25' 11"	28' 11"	29' 11"	31' 11"	32' 6"
EXT. HEIGHT + A/C	9' 7"	10' 3"	9' 7"	9' 7"	9' 7"	10' 7"	10' 5"	10' 7"	10' 9"	11' 2"	11' 3"
FRESH WATER	27 Gal	43 Gal	27 Gal	27 Gal	27 Gal	43 Gal	43 Gal	43 Gal	43 Gal	51 Gal	51 Gal
BLACK WATER	30 Gal	30 Gal	30 Gal	30 Gal	30 Gal	30 Gal	30 Gal	30 Gal	30 Gal	39 Gal	39 Gal
GRAY WATER	30 Gal	30 Gal	30 Gal	30 Gal	30 Gal	30 Gal	30 Gal	30 Gal	30 Gal	39 Gal	78 Gal

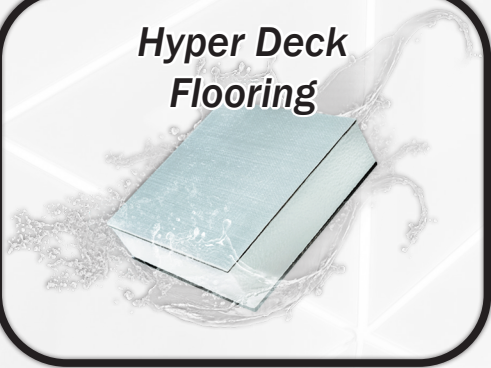
## ZINGER

MODEL	280RB	280RK	290KB	292RE	298BH	298FB	299RE	320FB
DRY WEIGHT	6638	6660	6619	7355	6974	6968	6944	7786
HITCH	904	808	868	802	828	990	914	1040
LENGTH	32' 6"	32' 11"	33' 6"	33' 6"	33' 11"	33' 11"	33' 11"	35' 11"
EXT. HEIGHT + A/C	11' 3"	11' 3"	11' 3"	11' 3"	11' 3"	11' 3"	11' 3"	11' 4"
FRESH WATER	51 Gal	51 Gal	51 Gal	51 Gal	51 Gal	51 Gal	51 Gal	51 Gal
BLACK WATER	39 Gal	39 Gal	39 Gal	39 Gal	78 Gal	39 Gal	39 Gal	39 Gal
GRAY WATER	78 Gal	78 Gal	39 Gal	39 Gal	78 Gal	78 Gal	78 Gal	39 Gal

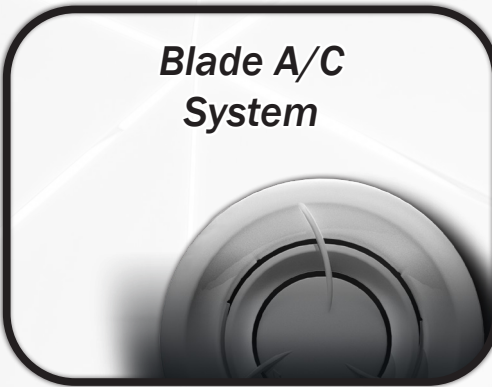
## ZINGER

MODEL	328SB	331BH	333DB	340BH	340MB	340RE	341RK
DRY WEIGHT	7756	8719	8214	9220	8486	8829	8096
HITCH	942	1208	904	1252	924	1058	1370
LENGTH	36' 6"	37' 6"	37' 7"	38' 0"	38' 0"	38' 0"	38' 0"
EXT. HEIGHT + A/C	11' 4"	11' 4"	11' 4"	11' 6"	11' 3"	11' 4"	11' 3"
FRESH WATER	51 Gal	51 Gal	51 Gal	51 Gal	51 Gal	51 Gal	51 Gal
BLACK WATER	39 Gal	78 Gal	78 Gal	39 Gal	39 Gal	39 Gal	39 Gal
GRAY WATER	39 Gal	39 Gal	39 Gal	78 Gal	78 Gal	78 Gal	78 Gal

**Hyper Deck  
Flooring**



**Blade A/C  
System**



**Optional:  
Solar Freedom 1**



**SCAN ME FOR MORE INFO!**



**SCAN ME FOR MORE INFO!**



**SCAN ME FOR MORE INFO!**





# STANDARDS & OPTIONS

## STANDARDS

### LIVING ROOM

- Designer Valances
- Storage Doors Below Booth Dinette (N/A Zinger Lite)
- Two Decor Options
- Wood Slide-Out Fascia
- AM/FM Stereo System w/ Bluetooth Soundbar
- Pleated Shades
- Flush Floor Slide-Out w/ Large Dinette Windows
- Sleeper Sofa
- LED Lighting
- LED Accent Lighting
- Generous Storage
- 81" Interior Ceiling Height
- USB Port
- Fireplace (N/A Zinger Lite)
- Booth Dinette (VBM)
- U-Shaped Dinette (VBM)
- WiFi Prep

### KITCHEN

- Pressed Counter Top w/ Sink Cover (N/A Single Axle)
- Stainless Steel High Rise Faucet (N/A Single Axle)
- Backsplash (N/A Zinger Lite)
- Stainless Steel Sink (N/A Single Axle)
- Range Hood w/ Light & Exhaust Fan
- Wall Mounted System Monitor Panel
- 10 Ft<sup>3</sup> 12-Volt Refrigerator
- Maple Cabinet Drawers
- Steel Ball Bearing Drawer Guides
- Oven - LED Glass Top
- Microwave
- Decorative Cabinet Glass
- Wine Cooler (299RE & 340RE)

### BATHROOM

- Large Lavatory Bowl
- Spacious Shower/Tub & One-Piece Surround
- Foot Flush Toilet - Porcelain (VBM)
- Mirrored Medicine Cabinet
- Linen Storage (VBM)
- Glass Shower Door & Radius Shower (VBM)
- Shower Curtain w/ Curved Shower Track (VBM)

### BEDROOM

- King Bed 70X80 (VBM)
- Washer/Dryer Prep (280RB, 299RE, 340BH, 340RE)
- TV Hook-up
- Coordinated Window Treatments
- Bedspread
- 60" X 74" Queen Bed (VBM)
- Night Stands w/ Outlets on Each Side
- USB Outlet
- Mirrors in Closet (VBM)

- Rustic Wood Feature Wall
- 110 Outlets
- Gas Strut Under Bed (VBM)

### EXTERIOR

- Fully Enclosed and Forced Air Heated Underbelly (VBM)
- Backup Camera Prep
- 2 Piece Smooth Front (VBM)
- Solar Prep
- Friction Hinge Entry Door
- Keyed-A-Like Exterior Doors
- Aerodynamic Front End
- Bumper with Drain Hose Storage and End Caps
- Speakers w/ LED Accents
- Molded Rain Gutters with 3" Drip Spouts
- Large Assist Grab Handle (VBM)
- Black Tank Flush (N/A Single Axle)
- Secure Stance Steps (Main Door) (VBM)
- 6 Gal Gas/Elec DSI Water Heater (VBM)
- Outside Shower (VBM)
- Radial Tires (Nitrogen Filled)
- Power Stabilizer Jacks (N/A Single Axle)
- 20 lb Tanks w/ Cover

### OPTIONS

- Upgraded Insulation
- Rear Ladder
- 15K BTU Main A/C
- 50 Amp Service w/ 2<sup>nd</sup> A/C Prep (2+ Slides) (Std - 280RB, 298FB, 299RE, 340RE, 340BH)
- 2<sup>nd</sup> A/C in Bedroom (13.5K)
- 39" TV (VBM) (Standard in 292RE/340RE)
- 50" TV (VBM) (Standard in 299RE)
- 8 Ft<sup>3</sup> Gas/Electric Refrigerator
- Table & Chairs (VBM)

### SINGLE AXLE OPTIONS

- 13.5K A/C (8K Standard)
- 2 Stabilizer Jacks - Front
- Spare Tire - Lite Single Axle
- 8 Ft<sup>3</sup> Gas/Electric Refer

\*VBM: Varies By Model



www.crossroadsrv.com • 1140 W. Lake St Topeka, IN 46571 • (260) 593 - 3850

DISCLAIMER: Product information is as accurate as possible as of the date of publication of this brochure. All features, floor plans, and specifications in this brochure are subject to change without notice. Please also consult CrossRoads' web site at [www.crossroadsrv.com](http://www.crossroadsrv.com) for more current product information and specifications. Tow Vehicle Disclaimer. CAUTION: Owners of CrossRoads recreational vehicles are solely responsible for the selection and proper use of tow vehicles. All customers should consult with a motor vehicle manufacturer or their dealer concerning the purchase and use of suitable tow vehicles for CrossRoads products. CrossRoads disclaims any liability or damages suffered as a result of the selection, operation, use or misuse of a tow vehicle. CROSSROADS' LIMITED WARRANTY DOES NOT COVER DAMAGE TO THE RECREATIONAL VEHICLE OR THE TOW VEHICLE AS A RESULT OF THE SELECTION, OPERATION, USE OR MISUSE OF THE TOW VEHICLE. REFERENCE CROSSROADS RV COMPANY OWNERS MANUAL FOR LIMITED WARRANTY DETAILS. \*Length is defined as the distance from the centerline of hitch pin/coupler to rear bumper of trailer.