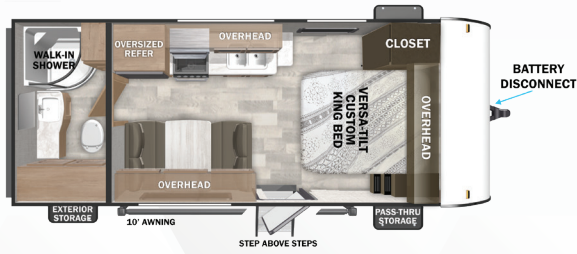
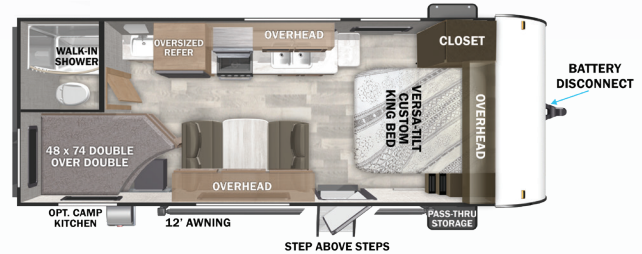


SALEM

CRUISE LITE



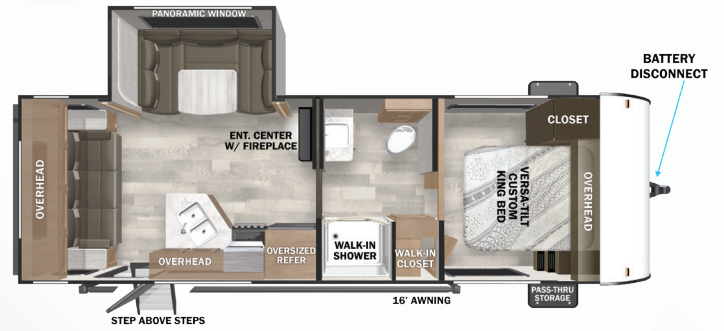
171RBXL
 HITCH: 521 lb UVW: 4,215 lb LENGTH: 22' 8"



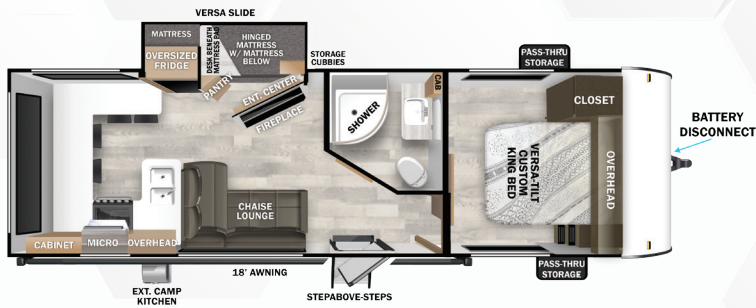
190BXL
 HITCH: 520 lb UVW: 4,533 lb LENGTH: 24' 8"



22VERANDA
 HITCH: 965 lb UVW: 8,105 lb LENGTH: 34' 7"



24RLXL
 HITCH: 550 lb UVW: 5,693 lb LENGTH: 28' 11"



24VIEW
 HITCH: 640 lb UVW: 6,471 lb LENGTH: 29' 11"



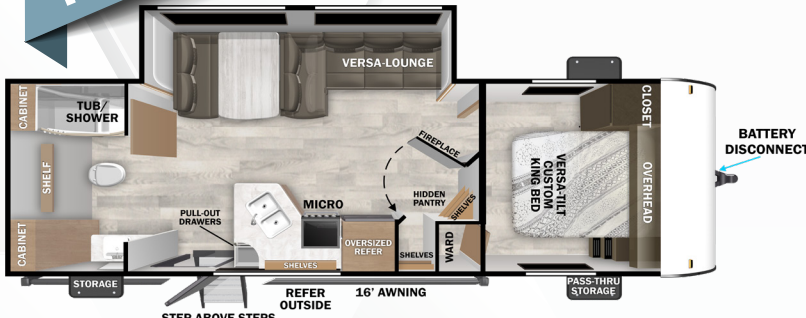
240BHL
 HITCH: 570 lb UVW: 5,943 lb LENGTH: 28' 10"



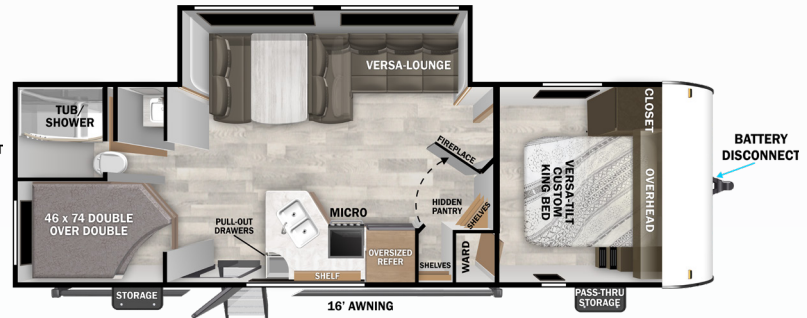
FORESTRIVERINC.COM



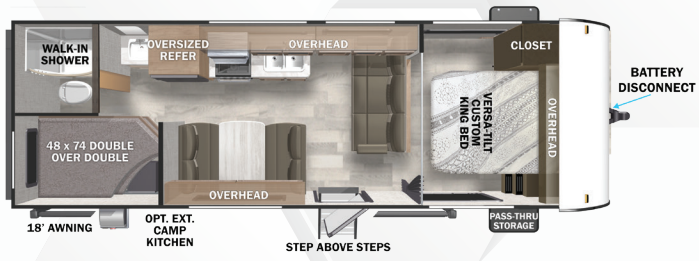
NEW!



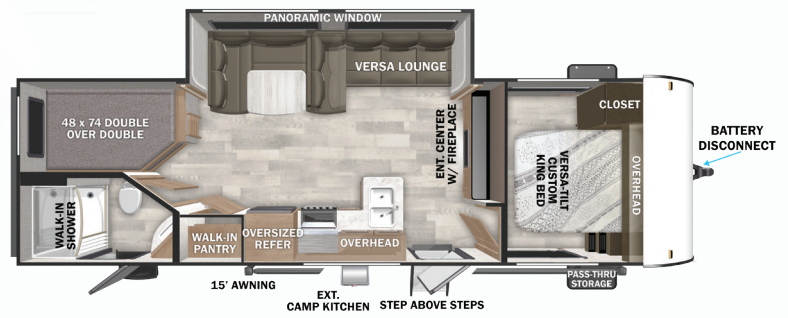
25ICE
HITCH: 550 lb UVV: 6,140 lb LENGTH: 29' 10"



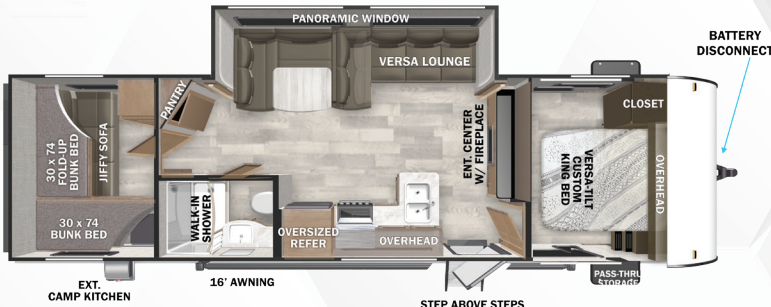
26ICE
HITCH: 785 lb UVV: 6,418 lb LENGTH: 32' 9"



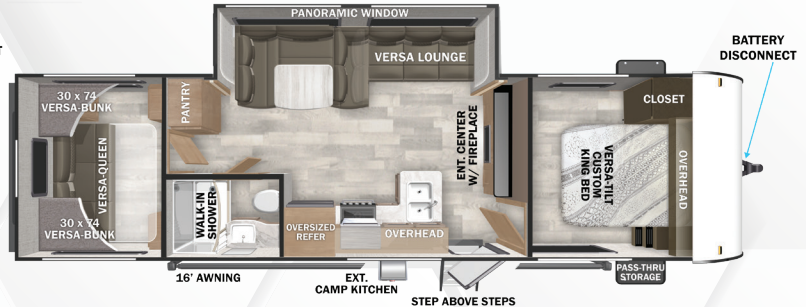
261BHX
HITCH: 545 lb UVV: 4,961 lb LENGTH: 28' 8"



263BHX
HITCH: 682 lb UVV: 6,420 lb LENGTH: 31' 9"



273QBXL
HITCH: 680 lb UVV: 6,592 lb LENGTH: 33' 3"



28VBXL
HITCH: 790 lb UVV: 6,665 lb LENGTH: 33' 7"

EACH NEW FOREST RIVER PURCHASE PROVIDES:

- ✔ Pre-delivery Inspection.
- ✔ Free Membership to Forest River Owners Group (FROG). Learn more at www.forestriverfrog.com.
- ✔ A Contribution to Care Camps Foundation www.carecamps.org.
- ✔ 1 Year Free Roadside Assistance from Date of Purchase.



LEARN MORE:
Scan this QR code with your mobile device to learn more about Forest River.



SPECIFICATION DEFINITIONS:

Scan this barcode using a QR reader on your smartphone to learn RV terminology and more!



YOUR SALEM DEALER

All information contained in this brochure is believed to be accurate at the time of publication. However, during any model year, it may be necessary to make changes to the manufacturing process of the units and information in this brochure. Your unit may differ from the information in this brochure due to any changes in the manufacturing process and equipment. Forest River, Inc. reserves the right to make all such changes without notice, including prices, colors, combinations, materials, equipment and specifications of any model as well as the addition of new models and the discontinuance of models shown in this brochure. Therefore, please consult with your Forest River dealer and confirm the availability of any materials, combinations, designs, or specifications that are meaningful to your purchase decision. © 2024 Salem, a Division of Forest River, Inc., a Berkshire Hathaway Company. All Rights Reserved. Forest River, Inc. 12/24