

# KODIAK

Where Ultra-Lite Meets Luxury

**DSI**  
18<sup>th</sup> Annual RVDA DEALER  
SATISFACTION INDEX

KODIAK



# KODIAK





Kodiak - the leader in Ultra-Lite technology - features innovative floor plans ranging from 16' to 31'. With units light enough to be towed by SUVs, minivans, crossover vehicles and light trucks, we are sure to have the model that best fits your family's needs.

Just because Kodiak is an Ultra-Lite, it doesn't mean your trailer is light on storage. With spacious countertops, cabinet space and oversized pass-through exterior storage, it's easy to take everything along on your next adventure.



Kodiak Ultra-Lite  
Model 279RBSL in Buckshot



### **Premium Entertainment System**

Kodiak's premium entertainment system features an AM/FM /CD/DVD player with MP3 input. Interior and exterior speakers are also included. The flat screen LCD HD TV is an optional feature.



### **Central Control Station**

All switches and monitor panel centrally located for easy use.





Kodiak Ultra-Lite  
Model 284BHSL

Kodiak's all new custom cabinetry design increases storage space by over 40%. Overhead cabinets are wider, taller and deeper. Plus our exclusive countertop design offers more usable space than the competition!

Solid Surface countertop with stainless steel sink and pull out faucet. Extra deep storage drawers, dedicated pots & pans storage plus full extension steel roller ball bearing drawer guides are standard on Kodiak.



Kodiak Ultra-Lite  
Model 284BHSL



Large hanging wardrobe space, dual reading lights, upgraded Evergreen™ mattress and a designer bedding package is standard with Kodiak.



Bunk Room  
Model 300BHSL

Quad bunk with full dinette, and hanging wardrobe with three full size drawers.



Bath  
Model 279BSL

Spacious bathroom with large bath tub, shower surround and sliding glass doors, large linen closet and skylight.





## Aerodynamic Profile



## Ultra -Lite Design Better Fuel Economy

Kodiak is specifically designed to be towed by most light trucks and sport utility vehicles. The aerodynamic profile is designed to push air up the front wall and over the roof to improve towing and fuel economy.



**Detachable Power Cord**



**Spray Port**



## Real Weights!

*Did you know...* that every Kodiak is weighed at the factory as it leaves the production line? Our certified Acu-Weight includes options!

Most competitors publish only a base weight that does not include options. Make sure that you know what the "real" weight of the unit is before you buy your next Ultra-Lite trailer.

## Enclosed and Heated Underbelly

Kodiak's enclosed and heated underbelly protects your water tanks and floor from damage while traveling. Plus, the underbelly is heated to prevent tanks from freezing.



**Slam Latch Doors**



## Bear Cave Storage

Kodiak's Bear Cave Storage is the largest in the Ultra-Lite products. The pass-through V-shaped cargo compartment increases storage by 30 percent.

With Kodiak — you can take it with you!

## Popular Options

**Aluminum Rims**



**Flat Screen HDTV**



**Front Jack**

# Bear Cage Construction

# Decor Choices



**6 WAY  
WELDED ALUMINUM  
SUPER STRUCTURE**

**5 WAY  
LAMINATION**

## ROOF - 5" THICK TRUSS STYLE ALUMINUM FRAME CONSTRUCTION

- 1 TPO Roof with 12 Year Manufacturer's Warranty
- 2 Luan Wood Backer
- 3 Tubular Aluminum Welded Framed Roof
- 4 High Density Structural Foam
- 5 Decorative Ceiling Finish
- 6 13,500 BTU Roof Ducted A/C
- 7 A/C Ducting System with Taped Seams

## FLOOR - FULLY LAMINATED WELDED ALUMINUM FRAME CONSTRUCTION

- 1 Residential Carpeting in Slide Room
- 2 Beauflor Flooring - 10 Year Warranty
- 3 Dual Layers of Floor Decking
- 4 Tubular Welded Aluminum Framed Floor
- 5 High Density Structural Foam
- 6 Polypropylene Waterproof Vapor Barrier

## CHASSIS - STEEL I-BEAM POWDER COATED CHASSIS

- 1 Folding Entry Steps
- 2 Four Corner Stabilizer Jacks
- 3 Large Heated Tanks Mounted Below Floor
- 4 "Polar Package" Enclosed and Heated Underbelly (N/A Express)
- 5 Radial Tires
- 6 Easy-Lube Hubs
- 7 LP Tanks with ABS Cover

## WALLS - FULLY LAMINATED, WELDED ALUMINUM FRAME CONSTRUCTION

- 1 High Gloss Fiberglass Exterior
- 2 Luan Wood Backer
- 3 Tubular Aluminum Welded Frame Walls
- 4 High Density Structural Foam Insulation
- 5 Decorative Wall Finish
- 6 Tinted Safety Glass Windows
- 7 Insulated Baggage Doors with Slam Latches (N/A Express)
- 8 TPO Fender Skirts
- 9 XL-Folding Entry Assist Handle (N/A Express)
- 10 Aerodynamic Front Profile for Better Fuel Economy
- 11 Diamond Plate Rock Guard
- 12 Adjustable Power Awning



**Peppercorn**



**Buckshot**



**Rullio Eggplant**



# Bear's Den Expandable Tent Ends



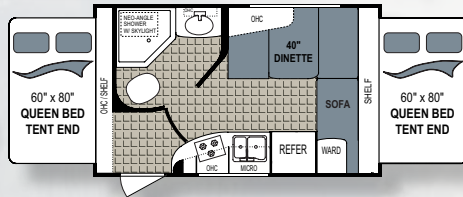
Kodiak's Bear's Den Tent Ends feature increased headroom and sleeping space.

A full 60" x 80" mattress is a standard feature.

Tent ends feature a 1200 pound capacity.

## Expandable

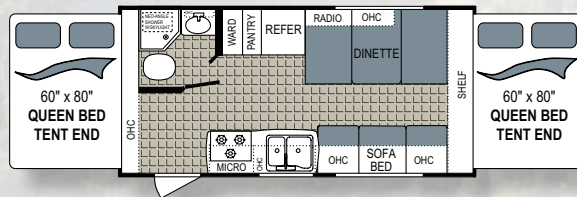
161E



Unloaded Weight (lbs) ..... 3,086  
Hitch Weight (lbs) ..... 426  
Cargo Capacity (lbs) ..... 664  
Overall Height w/AC ..... 9' 10"  
Overall Length ..... 17' 9"

Fresh Water Tank(s) ..... 52  
Black Water Tank(s) ..... 28  
Grey Water Tank(s) ..... 39  
Furnace BTU Output ..... 19,000

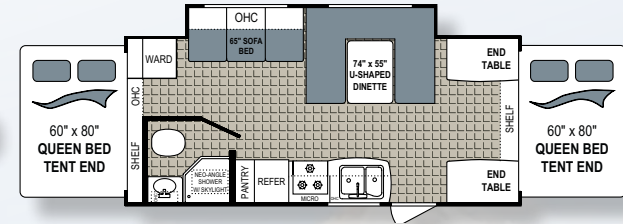
181E



Unloaded Weight (lbs) ..... 3,520  
Hitch Weight (lbs) ..... 324  
Cargo Capacity (lbs) ..... 1,480  
Overall Height w/AC ..... 9' 10"  
Overall Length ..... 20' 8"

Fresh Water Tank(s) ..... 52  
Black Water Tank(s) ..... 22  
Grey Water Tank(s) ..... 39  
Furnace BTU Output ..... 19,000

210ES

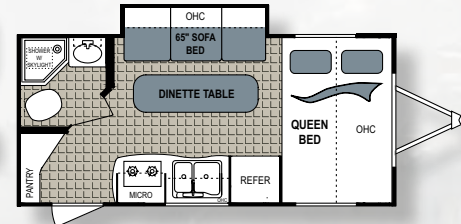


Unloaded Weight (lbs) ..... 4,092  
Hitch Weight (lbs) ..... 498  
Cargo Capacity (lbs) ..... 1,408  
Overall Height w/AC ..... 9' 10"  
Overall Length ..... 23' 11"

Fresh Water Tank(s) ..... 52  
Black Water Tank(s) ..... 22  
Grey Water Tank(s) ..... 39  
Furnace BTU Output ..... 19,000

## 7' Wide

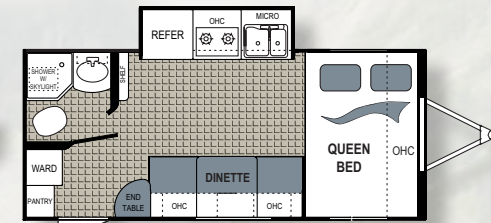
167QBSL



Unloaded Weight (lbs) ..... 3,254  
Hitch Weight (lbs) ..... 290  
Cargo Capacity (lbs) ..... 1,446  
Overall Height w/AC ..... 9' 10"  
Overall Length ..... 19' 7"

Fresh Water Tank(s) ..... 52  
Black Water Tank(s) ..... 22  
Grey Water Tank(s) ..... 39  
Furnace BTU Output ..... 19,000

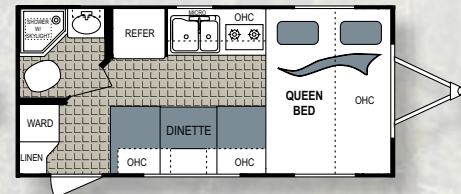
177QBSL



Unloaded Weight (lbs) ..... 3,254  
Hitch Weight (lbs) ..... 266  
Cargo Capacity (lbs) ..... 1,446  
Overall Height w/AC ..... 9' 10"  
Overall Length ..... 20' 5"

Fresh Water Tank(s) ..... 52  
Black Water Tank(s) ..... 22  
Grey Water Tank(s) ..... 39  
Furnace BTU Output ..... 19,000

187QB



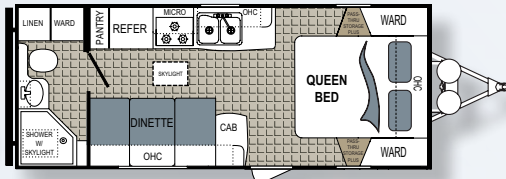
Unloaded Weight (lbs) ..... 2,906  
Hitch Weight (lbs) ..... 222  
Cargo Capacity (lbs) ..... 1,794  
Overall Height w/AC ..... 9' 10"  
Overall Length ..... 19' 2"

Fresh Water Tank(s) ..... 52  
Black Water Tank(s) ..... 22  
Grey Water Tank(s) ..... 39  
Furnace BTU Output ..... 19,000



**8' Wide**

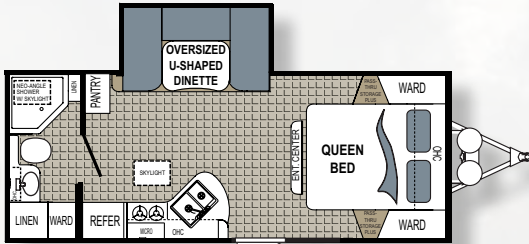
**200QB**



Unloaded Weight (lbs) ..... 3,874  
 Hitch Weight (lbs) ..... 322  
 Cargo Capacity (lbs) ..... 1,526  
 Overall Height w/AC ..... 10'  
 Overall Length ..... 24' 2"

Fresh Water Tank(s) ..... 52  
 Black Water Tank(s) ..... 28  
 Grey Water Tank(s) ..... 39  
 Furnace BTU Output ..... 19,000

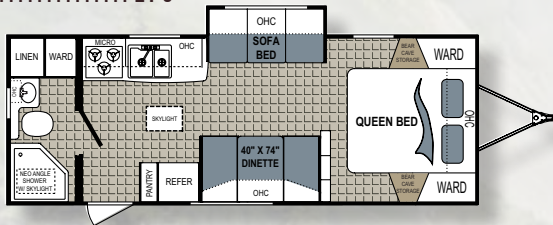
**221RBSL**



Unloaded Weight (lbs) ..... 4,604  
 Hitch Weight (lbs) ..... 572  
 Cargo Capacity (lbs) ..... 1,396  
 Overall Height w/AC ..... 10' 7"  
 Overall Length ..... 24' 8"

Fresh Water Tank(s) ..... 52  
 Black Water Tank(s) ..... 28  
 Grey Water Tank(s) ..... 39  
 Furnace BTU Output ..... 19,000

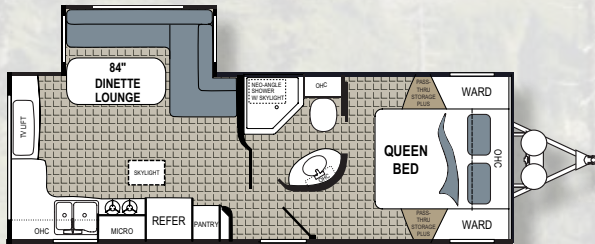
**241RBSL**



Unloaded Weight (lbs) ..... 4,412  
 Hitch Weight (lbs) ..... 396  
 Cargo Capacity (lbs) ..... 1588  
 Overall Height w/AC ..... 10'  
 Overall Length ..... 27' 2"

Fresh Water Tank(s) ..... 52  
 Black Water Tank(s) ..... 28  
 Grey Water Tank(s) ..... 39  
 Furnace BTU Output ..... 19,000

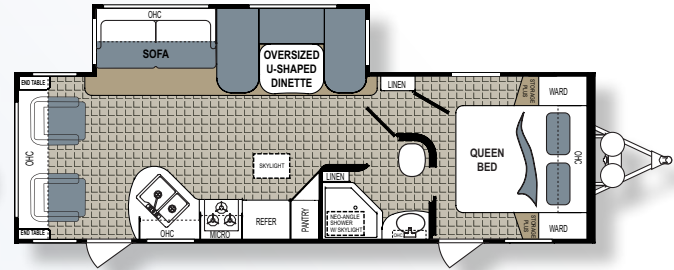
**242RESL**



Unloaded Weight (lbs) ..... 4,964  
 Hitch Weight (lbs) ..... 452  
 Cargo Capacity (lbs) ..... 1,636  
 Overall Height w/AC ..... 10' 7"  
 Overall Length ..... 27' 7"

Fresh Water Tank(s) ..... 52  
 Black Water Tank(s) ..... 22  
 Grey Water Tank(s) ..... 39  
 Furnace BTU Output ..... 30,000

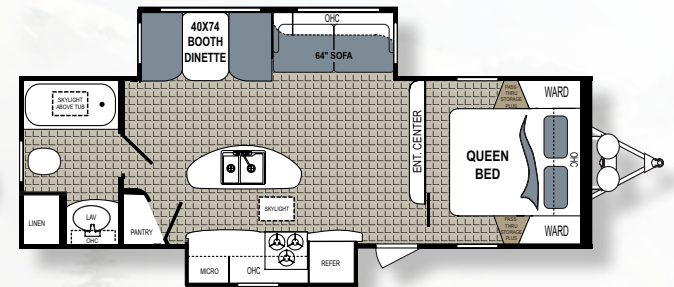
**263RLS**



Unloaded Weight (lbs) ..... 5,641  
 Hitch Weight (lbs) ..... 690  
 Cargo Capacity (lbs) ..... 1,959  
 Overall Height w/AC ..... 10' 7"  
 Overall Length ..... 31'

Fresh Water Tank(s) ..... 52  
 Black Water Tank(s) ..... 28  
 Grey Water Tank(s) ..... 39  
 Furnace BTU Output ..... 30,000

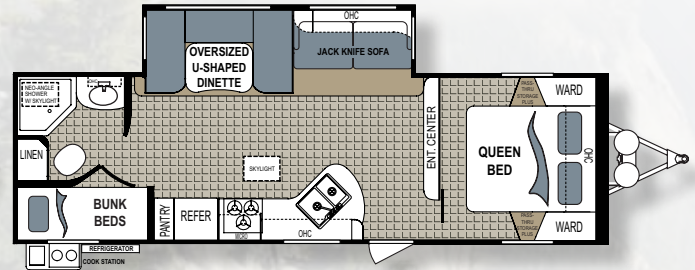
**279RBSL**



Unloaded Weight (lbs) ..... 6,100  
 Hitch Weight (lbs) ..... 772  
 Cargo Capacity (lbs) ..... 1,500  
 Overall Height w/AC ..... 10' 7"

Overall Length ..... 30' 8"  
 Fresh Water Tank(s) ..... 52  
 Black Water Tank(s) ..... 28  
 Grey Water Tank(s) ..... 67  
 Furnace BTU Output ..... 30,000

**284BHSL**



Unloaded Weight (lbs) ..... 5,708  
 Hitch Weight (lbs) ..... 686  
 Cargo Capacity (lbs) ..... 1,892  
 Overall Height w/AC ..... 10' 7"  
 Overall Length ..... 31' 10"

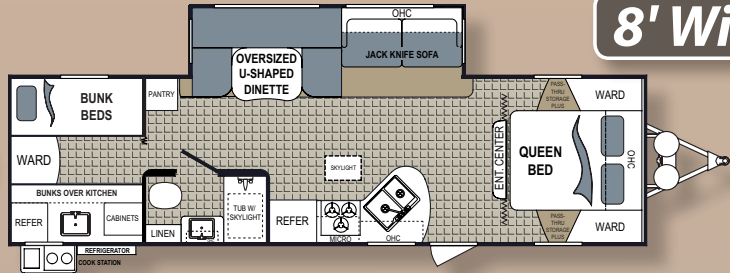
Fresh Water Tank(s) ..... 52  
 Black Water Tank(s) ..... 28  
 Grey Water Tank(s) ..... 39  
 Furnace BTU Output ..... 30,000

**FLOOR PLANS START AT ONLY 3000 LBS.**

\* Fresh water capacity includes water heater

# 8' Wide (Cont'd)

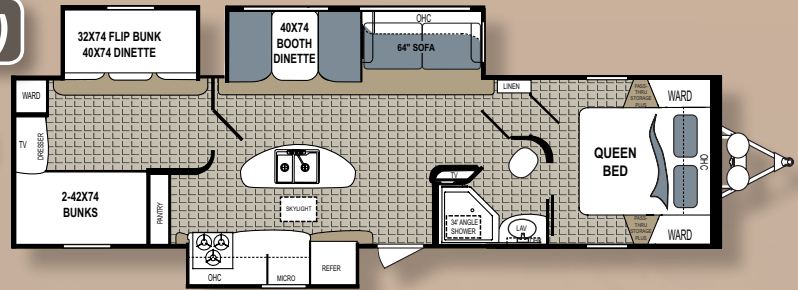
**290BHSL**



Unloaded Weight (lbs) ..... 5,978  
 Hitch Weight (lbs) ..... 756  
 Cargo Capacity (lbs) ..... 1,622  
 Overall Height w/AC ..... 10' 7"  
 Overall Length ..... 33' 4"

Fresh Water Tank(s) ..... 52  
 Black Water Tank(s) ..... 28  
 Grey Water Tank(s) ..... 39  
 Furnace BTU Output ..... 30,000

**300BHSL**

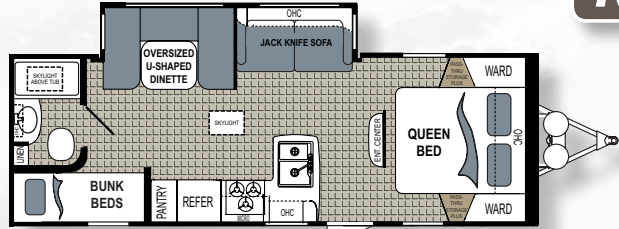


Unloaded Weight (lbs) ..... 7,526  
 Hitch Weight (lbs) ..... 833  
 Cargo Capacity (lbs) ..... 1,369  
 Overall Height w/AC ..... 10' 11"  
 Overall Length ..... 36' 11"

Fresh Water Tank(s) ..... 52  
 Black Water Tank(s) ..... 28  
 Grey Water Tank(s) ..... 67  
 Furnace BTU Output ..... 30,000

# Kodiak Express

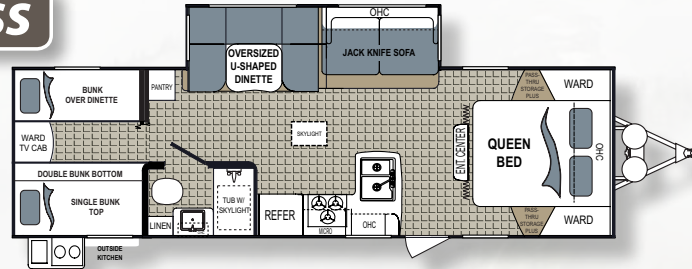
**255BHSL**



Unloaded Weight (lbs) ..... 4,676  
 Hitch Weight (lbs) ..... 493  
 Cargo Capacity (lbs) ..... 1,924  
 Overall Height w/AC ..... 10' 5"  
 Overall Length ..... 28' 4"

Fresh Water Tank(s) ..... 52  
 Black Water Tank(s) ..... 28  
 Grey Water Tank(s) ..... 39  
 Furnace BTU Output ..... 19,000

**283BHSL**



Unloaded Weight (lbs) ..... 5,346  
 Hitch Weight (lbs) ..... 728  
 Cargo Capacity (lbs) ..... 1,224  
 Overall Height w/AC ..... 10' 7"  
 Overall Length ..... 32'

Fresh Water Tank(s) ..... 52  
 Black Water Tank(s) ..... 28  
 Grey Water Tank(s) ..... 39  
 Furnace BTU Output ..... 30,000

283BHSL, Shown with Power Awning and Frameless Windows.

Evergreen™ Mattress, Double Door Refrigerator, Two-Tone Interior Walls with Night Shades.



Model 255BHSL in Peppercorn  
\*Shown with Dealer Add Optional HDTV



Vapor Wall with Sliding Glass Door



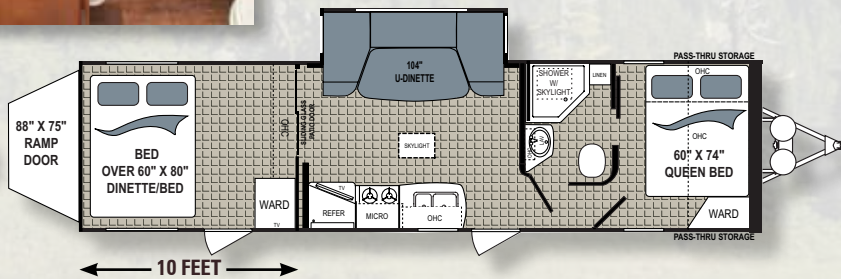
Kodiak Toy Hauler Model 292TQB in Peppercorn

## Toy Hauler



Spring Assist Ramp Door -3000 Lb. Capacity

292TQB



Unloaded Weight (lbs)	6,891
Cargo Capacity (lbs)	2,789
Hitch Weight (lbs)	1,056
Overall Length	35' 6"
Overall Height w/AC	11'
Fresh Water Tank(s)	46
Black Water Tank(s)	28
Grey Water Tank(s)	67
Furnace BTU Output	30,000

# STANDARD AND OPTIONAL FEATURES

## STANDARD FEATURES

### FUEL SAVER FRONT PROFILE

- Aerodynamic Front Profile Designed for Maximum Aerodynamics
- Streamlined Profile Reduces Air Turbulence for a more Stable Ride
- Improves Fuel Efficiency

### BEAR CAGE CONSTRUCTION

- 6 Sided Welded Aluminum Cage Construction
- 5 Way Lamination - Roof, Floor, Sidewalls and Rear Wall
- Fully Laminated, Aluminum Framed Roof
- 5" Laminated Crowned Roof with Ducted A/C (8' Wide TT's)
- 2" Thick Aluminum Framed Laminated Roof (7' Wide TT and Expandable)
- High Gloss Gel Coated Filon Fiberglass Exterior (N/A Express)

### POLAR PACKAGE

- Heated and Enclosed Underbelly Protects Bottom of Trailer from Road Debris and Damage ←\*✦
- Enhances Aerodynamics of Trailer
- Beauflor Flooring - Cold Crack Resistant

### EZ LUBE CUSTOM STANCE SUSPENSION

- Heavy Duty Axles
- 4 Wheel Electric Drum Brakes
- Easy Lube Hubs on Axles ←\*✦●
- Radial Tires (Required Option) ←\*✦●
- 14" Tires (Expandable, 7' Wides, and Express)
- 15" Tires (8' Wides)

### BEAR CAVE STORAGE

- Oversized Pass Thru Storage
- Slam Latch Cargo Doors (N/A Expandables and Express)
- Storage Light
- 110V Outlet
- Cable Hookup

### ACU-WEIGHT CERTIFICATION

- Real Weights - All Units Weighed before Leaving the Factory
- Weights Include Options - See Decal in Unit for Exact Weight of your Unit

## EXTERIOR CONSTRUCTION

### EXTERIOR COOK STATIONS

- LP Quick Connect

Follow "DutchmenRV" on



## FRAME

- Lightweight I-Beam Frame
- 4" Square Rear Bumper with Sewer Hose Storage
- Dual Battery Tray
- 2 5/16" Coupler
- Hitch Light
- Break-Away Trailer Switch
- Heavy Duty Safety Chains
- Four Corner Stabilizer Jacks ←\*✦●
- 12V Electric Slide-Out Motor with Override
- Spare Tire with Cover ←\*✦●
- Two 20 Lb. Lp Bottles with ABS Cover
- Double Folding Entry Step

## ROOF

- FULLY Laminated, Aluminum Framed Roof
- One-Piece TPO Roof
- Rain Gutter with Extended Corner Downspouts

## VIEW MASTER WINDOWS

- Large Picture Windows at Dinette
- Tinted, Radius Corner, Frameless Windows

## OTHER EXTERIOR FEATURES

- Large Adjustable Power Awning ←\*✦●
- Diamond Plate Rock Guard ←\*✦●
- Molded Fender Skirts (8' Wide TT's and Expandables)
- Exterior Wash Station with Quick Connect Hose (N/A Express)
- Deluxe Folding Entry-Assist Handle at Door (8' Wide TT's) \*
- 120V Exterior Outlet
- Radius Corner Entry Door
- Flush Combo Entry Latch/Dead Bolt Lock
- Exterior Security Light

## INTERIOR FEATURES

### STORE MORE CABINETRY

- New Cabinet Design - More Storage Space - Full Access Cabinets, Larger Drawers
- Glazed Cherry Finish Hardwood Cabinet Door and Drawer Fronts Throughout
- Large Galley Storage Pantry (See Floor Plans for Availability)
- Large Pots and Pan Storage (See Floor Plans for Availability)
- Solid Wood Drawers with Full Extension Drawer Glides

### SOLID SURFACE COUNTER TOPS MANDATORY

- Stainless Steel Under Mount Sink (N/A Express)
- High Rise Faucet

## MEDIA CENTER PREMIUM ENTERTAINMENT SYSTEM

- TV Prep - All Models
- 12V AM/FM/CD/DVD Stereo with MP3 Input ←\*✦
- Interior And Exterior Speakers ←\*✦●
- TV Antenna
- Wired for Cable/Satellite prep
- Bedroom TV Prep for Flat Panel TV's

## CENTRAL CONTROL STATION

- Convenient Location for Main Switches and Monitor panel
- Slide Out Controls
- Water Pump Switch
- Interior and Exterior Light Switches
- Water Heater Controls
- (Control Station N/A 7' Wide Models)

## OTHER INTERIOR FEATURES

- Residential Furniture Design With High Grade Fabrics
- 74" X 54" Oversized U-Shaped Dinette - (See Floor Plans)
- Fabric Night Shades throughout (8' Wide TT's) ←\*✦●
- Designer Window Treatments
- Designer Wall Border
- Stainless Steel Sink (N/A Express)
- Systems Monitor Panel
- Fire Extinguisher ←\*✦●
- LP/Carbon Monoxide/Smoke Detector ←\*✦●

## BATHROOM FEATURES

- Fiberlink Bathtub or Shower (See Floor Plans)
- Tub/Shower Surround ←\*✦●
- Skylight Over Tub/Shower ←\*✦●
- Shower Curtain - See Floor Plans
- Glass Shower Door with Neo-angle Shower (See Floor Plans)
- Foot Flush Toilet ←\*✦●
- Wood Medicine Cabinet with Mirror
- Power Roof Vent
- Toilet Tissue Holder
- Towel Hooks

## BEARS DEN - EXPANDABLE TENT ENDS

- New Tent Design with Self-Supporting Bunk Ends - 1,200 Pound Capacity
- 5" Thick Futon Mattress - Expandables
- Key-Locking "Easy Latch" Tent Doors
- 60" X 80" Beds In Tents
- Everdream Upgraded Mattress (7' & 8' Wide TT's)

## BEDROOM FEATURES - 8 WIDES

- Designer Bedroom Package with Bedspread and Window Treatments
- Roof Vent in Bedroom

## APPLIANCES, ELECTRICAL, PLUMBING & LIGHTING

- Double Door 6.3 Cu. Foot Gas/Electric Refrigerator ←\*●
- Black Panel Refrigerator Front
- Microwave with Carousel ←\*✦●
- 3 Burner Range with 17" Oven (8' Wide TT's and Expandables) ←\*✦●
- 2 Burner Cook Top (7' Wide TT's)
- Range Hood With 12V Light and Exhaust Fan
- 13.5K Air Conditioner with Quick Cool Vent ←\*✦●
- In-Roof Ducting for A/C (8' Wide TT's)
- Insulated and Foil Wrapped AC Ducting (8' Wide TT's)
- Detachable 30 AMP Power Cord
- 6 Gallon Gas/Electric Water Heater with DSI ←\*✦● (Opt Express)
- Water Bypass Kit
- Hot and Cold Water Low Point Drains
- 52 Gallon Fresh Water Tanks (8' Wide TT's and Expandables)
- Solid State Converter with Built-in Battery Charger

## OPTIONS

- Aluminum Rims
- Power Front Jack (N/A Express)
- 19", 26" and 32" Flat Screen HD LCD TV (8' Wide TT's)
- 15K AC
- Swing-out Bumper Grill

## PACKAGES

- \* Ultimate Package
- ✦ Advantage Package
- ← Premium Package
- Express Package



P.O. BOX 2164 Sales: 574.537.0600  
 2164 Caragana Court Fax: 574.975.6274  
 Goshen, Indiana 46527 www.Kodiak-RV.com

Your Local Dealer

We are proud to have been selected by the RV Dealers Association as the winner of the 17th Annual DSI Quality Circle Award. Dealers from across North America have awarded us with the honor because of our commitment to producing an innovative product that excels in quality, reliability, warranty and parts support. We are committed to producing the best travel trailers and fifth wheels in the industry. The dealers have voted and have chosen our travel trailers and fifth wheels as the best. We are confident you will too.



Product information is as accurate as possible as of the date of publication of this brochure. Features, floor plans and specifications are subject to change without notice. Please also consult Dutchmen's website at www.DUTCHMEN.com for more current product information and specifications. Tow Vehicle Disclaimer CAUTION: Owners of Dutchmen recreational vehicles are solely responsible for the selection and proper use of tow vehicles. All customers should consult with a motor vehicle manufacturer of their dealer concerning the purchase and use of suitable tow vehicles for Dutchmen products. Dutchmen disclaims any liability or damages suffered as a result of the selection, operations, use or misuse of a tow vehicle. Dutchmen's limited warranty does not cover damage to the recreational vehicle or the tow vehicle as a result of the selection, operation, use or misuse of the tow vehicle.