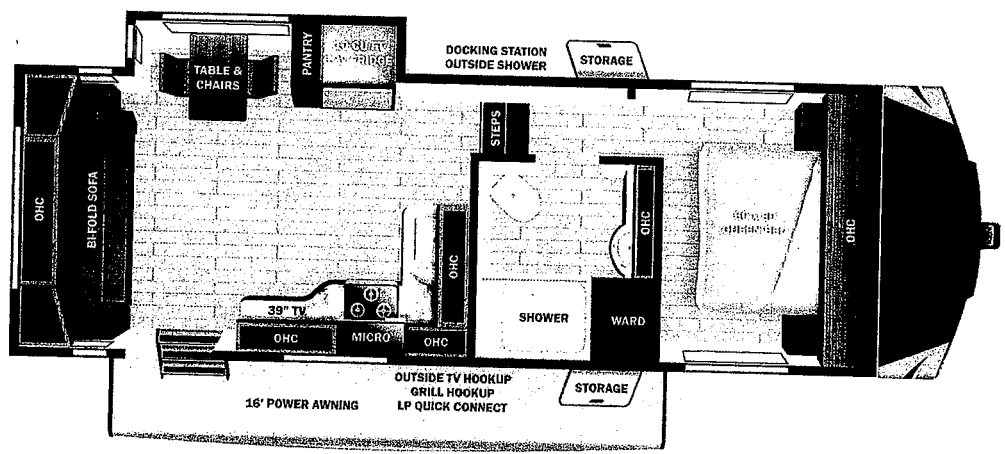


R04414

Manufacturer's Suggested Retail Price

\$69,460.00

TOTAL AMOUNT DOES NOT INCLUDE STATE AND LOCAL TAXES OR LICENSE FEES. THE PRICE SHOWN ABOVE IN ANY OR WAY NOT BE REPRESENTATIVE OF THE ACTUAL SELLING PRICE OF SIMILAR RECREATIONAL VEHICLES IN YOUR AREA.



UVW
7397 lbs



Sleeps



Length
27' 5"

DIMENSIONS

Exterior height:.....157.00"
 Exterior width:.....100.00"

WEIGHTS

GVWR:.....8900
 GAWR (front):.....4400
 GAWR (rear):.....4400
 Approx. Gross Cargo Carrying Capacity (GCC):.....1503

CAPACITIES

Fresh water tank (gals.):...55.00
 Gray water tank (gals.):...30.00
 Black water/toilet tank (gals.):.....30.00
 Propane (lbs.):.....60
 Propane (gals.):.....14
 Water heater (gals.):.....6.00

SEATING & SLEEPING

TIRES

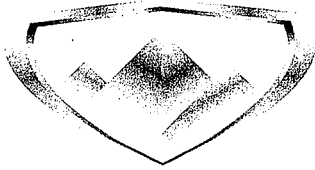
Tire size (front):.....ST235/80R16E
 Tire size (mid):.....
 Tire size (rear):.....ST235/80R16E

Some dimensions may be rounded and may vary from the actual dimensions*
 *Weights may be estimated calculations and may vary from the actual weight
 - refer to the vehicle weight labels for actual weights***
 Floorplans, features and specifications are subject to change without notice.*



R04414

Open Range Roamer Light Duty



Highland RIDGE RV

Serial #: 58TCM0BM0P3DA3073
Model: 234RLS OPEN RANGE ROAMER LIGHT DUT

Model Year: 2023 Dealer Name: ST. LOUIS RV

1080 WEST TERRA LANE
O'FALLON, MO 63366
USA

Standard Equipment

Optional Equipment

THE FOLLOWING ITEMS ARE STANDARD ON THIS MODEL
AT NO EXTRA CHARGE

OPTIONAL EQUIPMENT INSTALLED ON UNIT
BY MANUFACTURER

EXTERIOR

- 100" wide body frame
- 2" receiver hitch
- 3-20 lb. LP bottles
- 50 amp service
- ACCU-SLIDE™ slide system (4-corner compression)
- Battery disconnect switch
- Brass hanger bushings with wet bolts
- Equa-Flex® axle suspension
- Exterior grill/griddle quick connect port
- Laminated block foam floor
- PVC roofing membrane (limited lifetime warranty)
- Rear roof access ladder
- Self-adjusting electric brakes
- Spare tire
- TuffShell™ -vacuum bonded laminated construction, reinforced with heavy-duty fiberglass and welded aluminum frames

FOUR SEASON PACKAGE (Mandatory)

- Double insulated baggage doors
- Ducted heat to underbelly with cold air return
- Enclosed cable operated gate valves
- Enclosed exterior docking station with black tank flush
- Heated and enclosed underbelly
- High performance furnace
- R-38 reflective foil insulation in ceiling and underbelly
- R-9 block foam insulation in sidewalls

INTERIOR

- .9 cu. ft. Microwave
- 10 cu. ft. 12V refrigerator
- 60" x 80" residential queen bed
- 75 lb. ball bearing drawer guides
- Cable and satellite prep
- Flush floor slides with residential vinyl flooring
- LED interior lighting
- Observation camera prep
- Oven and 3-burner range with flush mount glass cover
- Roller blackout night shades
- Theater seating with heat and massage

EXECUTIVE PACKAGE (Mandatory)

- 15,000 BTU roof mounted A/C
- Cutting board and sink strainer
- Dome style digital TV antenna with Wi-Fi prep
- Interior convenience center light
- JBL® Aura Cube stereo with Bluetooth® and miZONE™ technology
- Keyed-Alike® entry and baggage doors
- LED HDTV
- Marine grade exterior speakers (2)
- Painted fiberglass front cap with LED lighting
- Power awning with LED lighting
- Quick recovery gas/electric water heater
- Quick release fresh water drain
- Residential high-rise faucet with pull-down sprayer
- Single basin stainless steel under-mount kitchen sink
- Solar prep
- Solid swing-down entry steps
- Stainless steel appliances
- TravelLINK® - Smart RV system that allows for Bluetooth® control of awnings, lighting, slideouts, heating, cooling and more
- USB/12V charging port

- Base price
- USA Standards
- Executive Package
- Four Seasons Protection Package
- Xtend Solar II Package
- 2nd AC 13.5K BTU Ducted 10 Cu. Ft. 12 Volt Refrigerator
- No Bedroom TV
- Windows Standard
- Power Fan Vent Bathroom
- 4 Point Auto Level with JT Strong Arms
- Theater Seats

5

UNIT TOTAL

69,4

DEALER INSTALLED OPTION