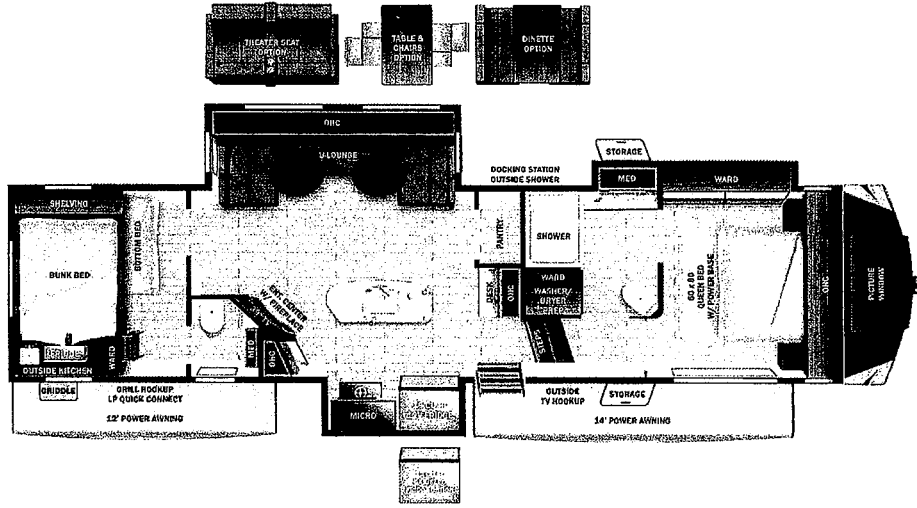


Manufacturer's Suggested Retail Price \$100,315.00

TOTAL AMOUNT DOES NOT INCLUDE STATE AND LOCAL TAXES OR LICENSE FEES. THE PRICE SHOWN ABOVE MAY OR MAY NOT BE REPRESENTATIVE OF THE ACTUAL SELLING PRICE OF SIMILAR RECREATIONAL VEHICLES IN YOUR AREA.



UVW
11938 lbs



Sleeps



Length
39' 7.25"

DIMENSIONS

Exterior height:.....157.25"
Exterior width:.....100.00"

WEIGHTS

GVWR:.....13500
GAWR (front):.....6000
GAWR (rear):.....6000
Approx. Gross Cargo Carrying Capacity(GCCC):.....1562

CAPACITIES

Fresh water tank (gals.):...75.00
Gray water tank (gals.):...115.00
Black water/toilet tank (gals.):.....80.00
Propane (lbs.):.....60
Propane (gals.):.....14
Water heater (gals.):.....6.00

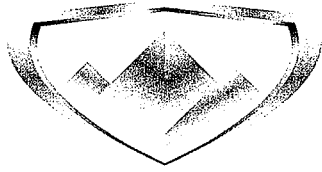
SEATING & SLEEPING

TIRES

Tire size (front):.....ST235/80R16E
Tire size (mid):.....
Tire size (rear):.....ST235/80R16E

Some dimensions may be rounded and may vary from the actual dimensions
Weights may be estimated calculations and may vary from the actual weight - refer to the vehicle weight labels for actual weights
Floorplans, features and specifications are subject to change without notice.





Highland

RIDGE RV

Open Range Roamer

Serial #: 58TCM0BU7P3JD3078
Model: 364BHS OPEN RANGE ROAMER FW

Model Year: 2023 Dealer Name: ST. LOUIS RV

1080 WEST TERRA LANE
O'FALLON, MO 63366
USA



Standard Equipment

Optional Equipment

THE FOLLOWING ITEMS ARE STANDARD ON THIS MODEL
AT NO EXTRA CHARGE

OPTIONAL EQUIPMENT INSTALLED ON
BY MANUFACTURER

EXTERIOR

- 100" wide body frame
- 2" receiver hitch
- 3-20 lb. LP bottles
- 50 amp service
- ACCU-SLIDE™ slide system (42" deep 4-corner compression)
- Battery disconnect switch
- Brass hanger bushings with wet bolts
- Equa-Flex® axle suspension
- Exterior grill/griddle quick connect port
- Laminated block foam floor
- PVC roofing membrane (limited lifetime warranty)
- Rear roof access ladder
- Self-adjusting electric brakes
- Spare tire
- TuffShell™ -vacuum bonded laminated construction, reinforced with heavy-duty fiberglass and welded aluminum frames

FOUR SEASON PACKAGE

- Double insulated baggage doors
- Ducted heat to underbelly with cold air return
- Enclosed cable operated gate valves
- Enclosed exterior docking station with black tank flush
- Heated and enclosed underbelly
- High performance furnace
- R-38 reflective foil insulation in ceiling and underbelly
- R-9 block foam insulation in sidewalls

INTERIOR

- 16 cu. ft. 12V refrigerator
- 60" x 80" residential queen bed with adjustable power base
- 75 lb. ball bearing drawer guides
- Cable and satellite prep
- Flush floor slides with residential vinyl flooring
- Large oven and 3-burner range with flush mount glass cover
- LED interior lighting
- Observation camera prep
- Residential microwave
- Roller blackout night shades
- Theater seating with heat and massage
- Wall controlled power vent (kitchen/living room area)
- Washer/dryer prep

EXECUTIVE PACKAGE

- 15,000 BTU roof mounted A/C
- AM/FM/HDMI/USB/AUX Bluetooth® sound bar stereo with outdoor zoned speakers
- Cutting board and sink strainer
- Dome style digital TV antenna with Wi-Fi prep
- Interior convenience center light
- JBL® Aura Cube stereo with Bluetooth® and miZONE™ technology
- JBL® Premium indoor and outdoor multizone speakers
- Keyed-Alike® entry and baggage doors
- LED HDTV
- Marine grade exterior speakers (2)
- Painted fiberglass front cap with LED lighting and automotive tinted window
- Power awning with LED lighting
- Quick recovery gas/electric water heater
- Quick release fresh water drain
- Residential high-rise faucet with pull-down sprayer
- Single basin stainless steel under-mount kitchen sink
- Solar prep
- Solid swing-down entry steps
- Solid-surface kitchen countertops
- Stainless steel appliances
- TravelLINK® - Smart RV system that allows for Bluetooth® control of awnings, lighting, slides, heating, cooling and more
- USB/12V charging port

Base price

- CSA Standards
- Executive Package
- Four Seasons Protection Package
- Xtend Solar II Package
- 13,500 BTU AC Ducted 15.6 Cu. Ft. 12 Volt Refrigerator
- No Generator Prep
- No Bedroom TV
- Windows Standard
- Power Fan Vent Bathroom
- 4 Point Auto Level with JT Strong Arms
- U-Lounge Sofa

UNIT TOTAL

100,

DEALER INSTALLED OPTION