

Flagstaff

MAC, SE, CLASSIC, HIGH WALL & HARD SIDE CAMPERS

WE'RE  YOUR
LIGHT WEIGHT
SPECIALISTS
EST. 1974



MAC, SE, CLASSIC, HIGH WALL & HARD SIDE CAMPERS

Flagstaff



FLAGSTAFF

MAC

MAKING YOUR INVESTMENT GO A LONG WAY.

Flagstaff takes pride in packing the most value possible into our MAC series. Finding the perfect fit for the specific needs of your active family is made easier by the wide variety of floor plans available. While each model comes standard with many features, you still have flexibility to incorporate as many options as you choose to fit your camping preferences.

MODEL NO.

228D





MODEL NUMBER	205	208	228	228D	176LTD	206LTD
Unloaded Vehicle Weight *	1997	1896	2278	2439	1465	1608
Base Dry Hitch Weight	230	255	289	263	162	195
Base Dry Axle Weight	1748	1622	1970	2157	1284	1394
Cargo Capacity	1233	1359	1011	824	857	747
Box Size	10'	10'	12'	12'	8'	10'
Trailer Size (Closed w/ Hitch)	15' 3"	15' 3"	17' 2"	17' 2"	12'	14'
Height (Closed)	66"	66"	66"	66"	64"	64"
Trailer Length (Open)	20' 1"	20' 1"	23' 10"	23' 10"	17' 1"	20' 1"
Fresh Water Capacity	26	26	26	26	10	10

The Unloaded Vehicle Weight (UVW) listed represents the weight of one trailer with that model's standard equipment including the content of specified option packages. * See back cover for further specification definitions.

FLAGSTAFF

Sports Enthusiast Package

WELCOME TO THE FLAGSTAFF SPORTS ENTHUSIAST PACKAGE (SE), a camper designed for active couples and families. Whatever the preference; mountain biking, canoeing, paddle boarding or surfing, the SE camping trailers are designed to allow you to make the most of your outdoor experience.

BUILT FOR 21ST CENTURY CAMPING. The SE package includes a AM/FM stereo with Bluetooth technology, a MP3 Player and USB auxiliary ports for streaming and recharging, LED lighting and a WIFI Ranger WIFI booster.

CARGO CARRYING VERSATILITY.

The Flagstaff SE camper features ProRac Systems, Inc. permanent mount cross bars that provide a load-bearing surface for SE carrying up to 150 lbs. of a wide variety of outdoor sports equipment.

UNBOUNDED ADVENTURE.

Distinctive fender flairs and 15" Mud Rover Radial Tires with Aluminum Wheels provides 12" of ground clearance to go anywhere. Each SE is solar power ready, so get off the grid!

MODEL NO.

206SE





Sports Enthusiast Package



HARD SIDE MODELS



MODEL NUMBER	SPORTS ENTHUSIAST PACKAGE						HARD SIDE MODELS		
	176SE	206STSE	207SE	228BHSE	23SCSE	28TSCSE	T12RBTHSE	T12RBSSE	T21TBHWSE
Unloaded Vehicle Weight *	1722	2180	2076	2559	2933	3377	2392	2272	2604
Base Dry Hitch Weight	178	254	234	338	294	221	346	290	302
Base Dry Axle Weight	1525	1907	1823	2202	2620	3118	2008	1944	2264
Cargo Capacity	656	724	808	1279	861	1844	1454	1518	1198
Box Size	8' 4"	10'	10'	12'	12'	12'	12'	12'	14'
Trailer Size (Closed w/ Hitch)	12' 1"	17' 1"	15' 4"	19' 2"	22' 5"	26' 8"	22' 1"	19'	20' 10"
Height (Closed)	71"	71"	71"	74"	74"	74"	71"	71"	71"
Trailer Length (Open)	17' 1"	20' 4"	20' 1"	23' 10"	26' 5"	30' 8"	TBD	TBD	TBD
Fresh Water Capacity	20	20	20	26	26	26	26	26	26

The Unloaded Vehicle Weight (UVW) listed represents the weight of one trailer with that model's standard equipment including the content of specified option packages. * See back cover for further specification definitions.

FLAGSTAFF

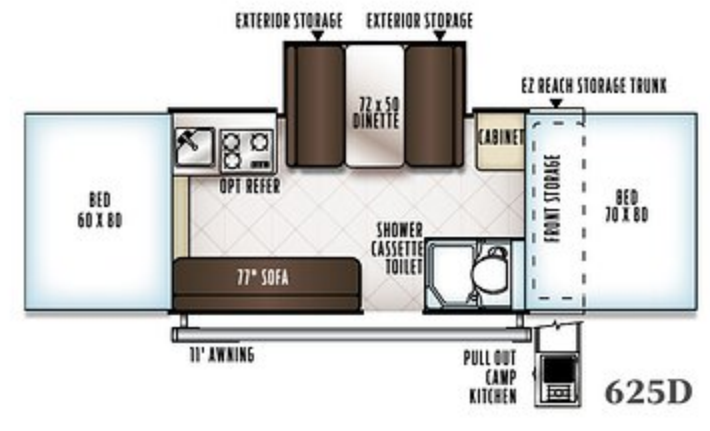
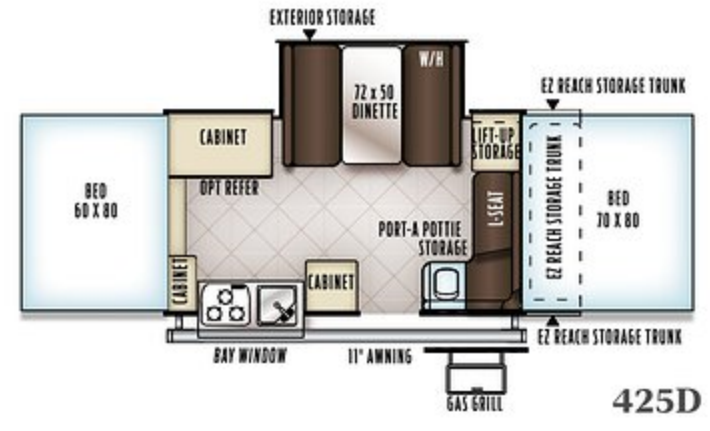
Classic

A PROVEN TRACK RECORD MAKES THIS UNIT A CLASSIC CAMPER. Year in and year out the Classic series consistently delivers with outstanding features and styling to enhance your camping experience. The swing down galley and standard power lift make the Classic a breeze to set up. The expansive seating throughout the camper gives everyone plenty of room to sit and enjoy themselves.

MODEL NO.

627D





MODEL NUMBER	425D	625D	627D	823D
Unloaded Vehicle Weight *	2698	2955	2831	2795
Base Dry Hitch Weight	297	386	370	292
Base Dry Axle Weight	2382	2550	2442	2484
Cargo Capacity	599	431	539	497
Box Size	12'	12'	14'	12'
Trailer Size (Closed w/ Hitch)	18' 10"	18' 10"	19' 2"	18' 10"
Height (Closed)	69"	69"	69"	69"
Trailer Length (Open)	23' 9"	23' 9"	25' 9"	23' 9"
Fresh Water Capacity	26	26	26	26

The Unloaded Vehicle Weight (UVW) listed represents the weight of one trailer with that model's standard equipment including the content of specified option packages.* See back cover for further specification definitions.

FLAGSTAFF

High Wall

IT'S YOUR VACATION. WHY NOT GO OUT IN STYLE? The Flagstaff High Wall campers are perfect for those families who want the luxurious features of a travel trailer in a much lighter towable option. The rich maple colored cabinetry, stainless steel finishes and beautiful wood grain-look flooring puts this camper in a class of its own.

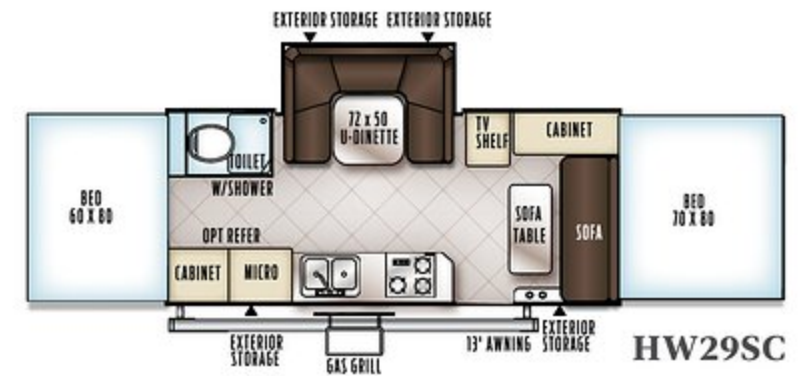
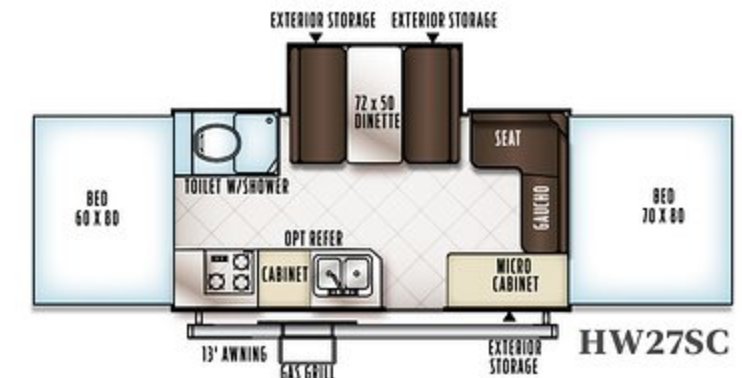
MODEL NO.

HW27KS





High Wall



MODEL	HW27SC	HW27KS	HW29SC
Unloaded Vehicle Weight *	3249	3334	3721
Base Dry Hitch Weight	296	380	371
Base Dry Axle Weight	2915	2916	3312
Cargo Capacity	547	546	1278
Box Size	14'	14'	16'
Trailer Size (Closed w/ Hitch)	19' 3"	19' 3"	21' 3"
Height (Closed)	79"	79"	81"
Trailer Length (Open)	25' 9"	25' 9"	27' 9"
Fresh Water Capacity	26	26	26
Gray Water Capacity	12	12	12
Black Water Capacity	12	12	12

The Unloaded Vehicle Weight (UVW) listed represents the weight of one trailer with that model's standard equipment including the content of specified option packages. * See back cover for further specification definitions.

FLAGSTAFF

Hard Side

VACATIONS LIKE A LARGER TRAVEL TRAILER AND STORES LIKE A CAMPER.

The Hard Side folding camper brings a smooth, fiberglass vacuum bonded exterior with quick, easy set up, while retaining the towing and storage advantages of the Classic tent camper. Making it the perfect product for your camping adventure.

MODEL NO.

T12RB





GAS STRUT LIFT ASSIST
(Std. Hard Side Models w/ Manual Lift Roof Only)



MOLDED LP BOTTLE COVERS
(Std. on all Hard Sides and High Walls)

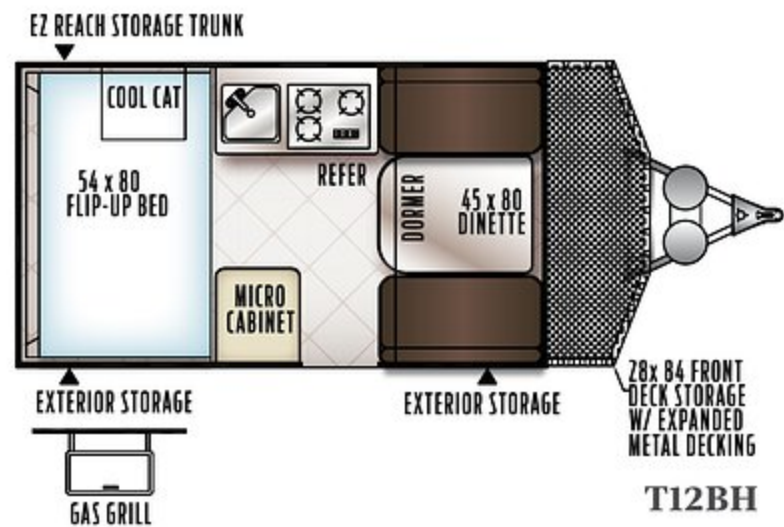
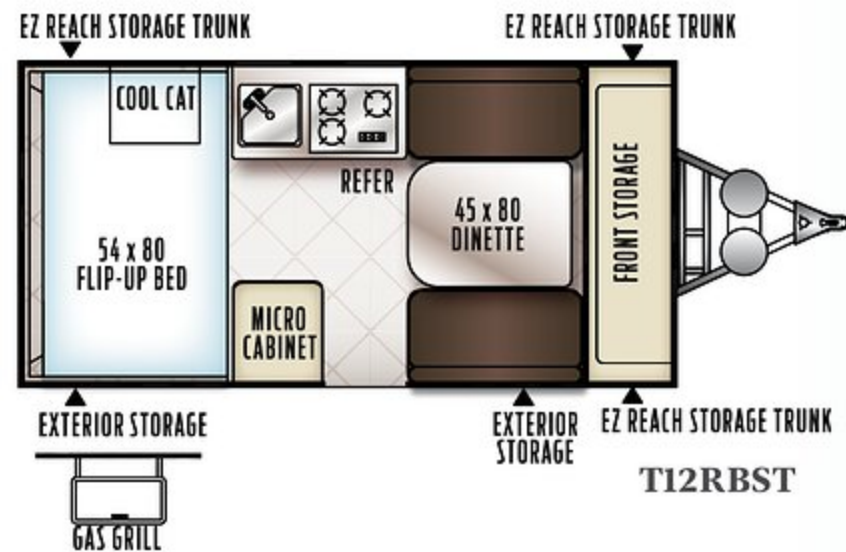
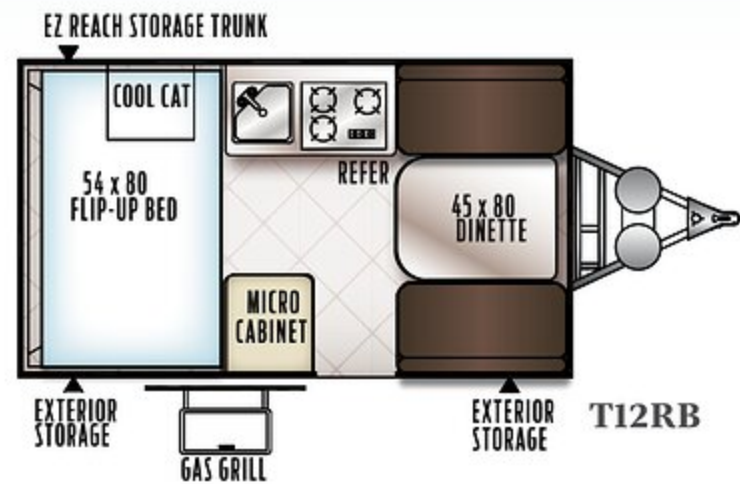


Hard Side and Hard Side High Wall Awning & Screen Room option shown on T12RBST.

MODEL NUMBER	T12RB	T12RBST	T12BH
Unloaded Vehicle Weight*	2014	2120	2267
Base Dry Hitch Weight	222	284	307
Base Dry Axle Weight	1754	1798	1922
Cargo Capacity	1208	1164	1040
Box Size	12'	12'	12'
Trailer Size (Closed w/ Hitch)	17' 1"	18' 10"	19' 2"
Height (Closed)	61"	61"	61"
Fresh Water Capacity	26	26	26

The Unloaded Vehicle Weight (UVW) listed represents the weight of one trailer with that model's standard equipment including the content of specified option packages. * See back cover for further specification definitions.

Hard Side



FLAGSTAFF

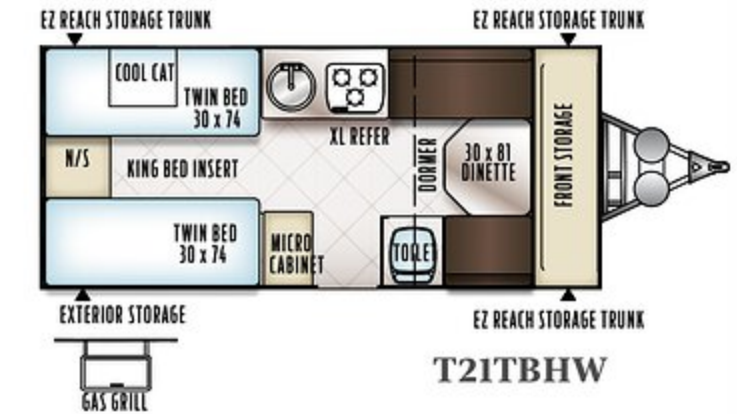
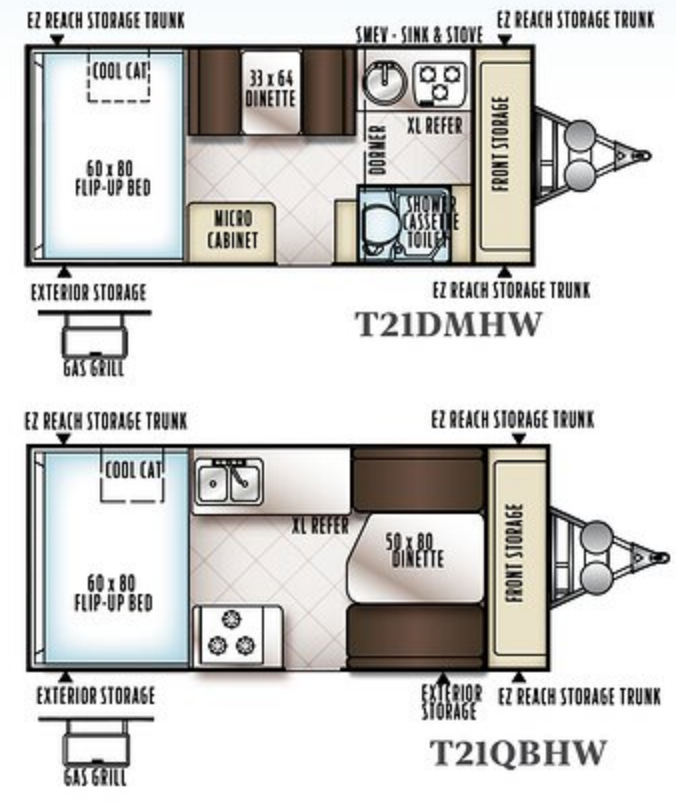
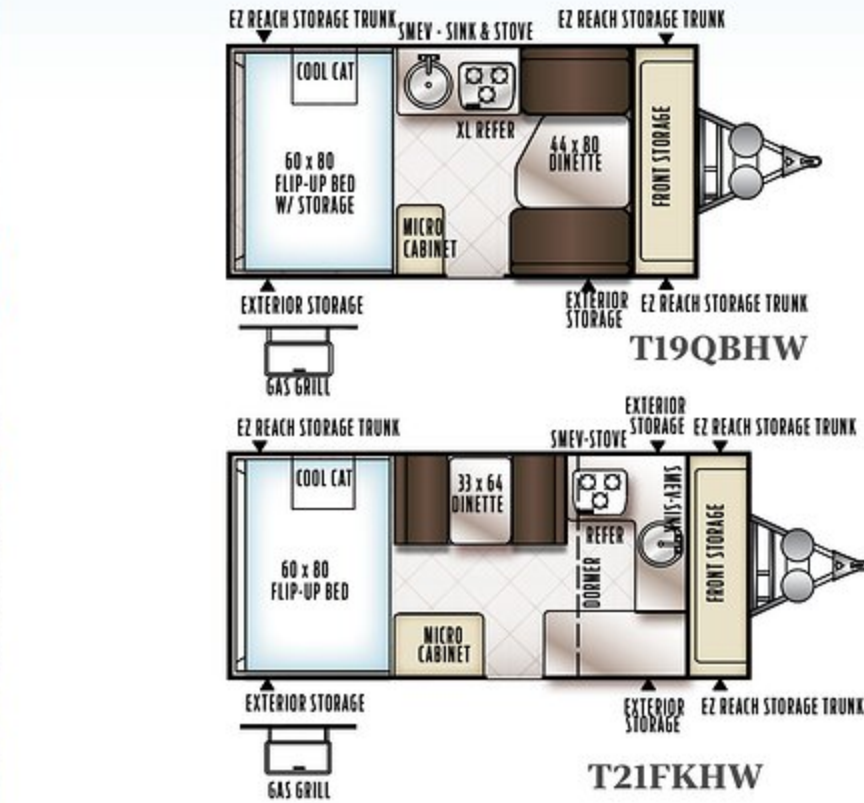
Hard Side High Wall

LOOKING FOR MORE OF A GOOD THING? The Hard Side High Wall folding camper comes with all the advantages of the regular Hard Side models and much more. These versatile floor plans offer 34" kitchen counter tops that provide for a comfortable working height and room for an extra large refrigerator. The power roof assist makes set up quick and easy, allowing you to begin enjoying your camping experience in no time.

MODEL NO.

T21DMHW





POWER ROOF LIFT ASSIST

Hard Side High Wall

MODEL NUMBER	T19QBHW	T21DMHW	T21FKHW	T21QBHW	T21TBHW
Unloaded Vehicle Weight *	2312	2700	2638	2526	2670
Base Dry Hitch Weight	341	353	350	311	372
Base Dry Axle Weight	1933	2309	2250	2177	2260
Cargo Capacity	1029	653	712	785	702
Box Size	12'	14'	14'	14'	14'
Trailer Size (Closed w/ Hitch)	18' 10"	20' 10"	20' 10"	20' 10"	20' 10"
Height (Closed)	65"	68"	68"	67"	68"
Fresh Water Capacity	26	26	26	26	26

The Unloaded Vehicle Weight (UVW) listed represents the weight of one trailer with that model's standard equipment including the content of specified option packages. * See back cover for further specification definitions.



FLAGSTAFF

Construction

- A** Three Stage Double Arm Lifter Posts (NA Hard Side)
- B** Fiberglass Vacuum Bonded Radius Roof w/ No Center Seam (NA Hard Side)
- C** Five-Piece Vinolon Supreme Tenting (NA Hard Side)
- D** E-Z Crank Down Stabilizer Jacks w/Sand Pads
- E** Full Perimeter Aluminum Bed Frames (NA Hard Side)
- F** Plywood Bunk Ends (NA Hard Side)
- G** Seven-Way Pigtail Wiring
- H** Under Floor 20 Gallon Fresh Water Tank (LTDs 11 Gallon Above Floor)
- I** Powder Coated Tubular Steel Frame
- J** Powder Coated Rafter Poles and Bed Bows (NA Hard Side)
- K** Air Conditioner Reinforcing Laminated Into Roof (NA Hard Side)
- L** Nitrogen Filled Steel Belted Radial Tires
- M** Easy Lube System (Except LTDs)
- N** Smooth Fiberglass Vacuum Bonded Exterior (NA on Freedoms)
- O** One-Piece Door (Except LTDs & Hard Side)
- P** Under Awning LED Lighting (N/A LTD's & Hard Side.)



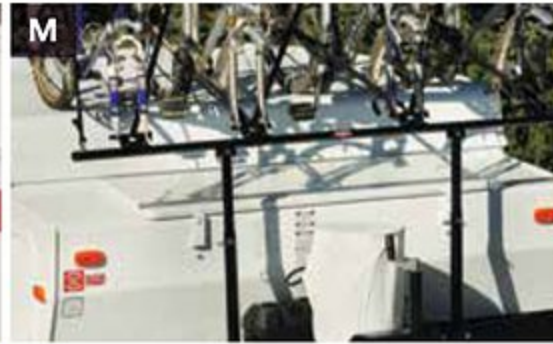
DEXTER TORFLEX

(Standard on Classic, High Wall and Hard Side Models)

- Independent wheel suspension and self-damping action
 - Rubber cushioning eliminates metal-to-metal contact.
 - Forged torsion arm for maximum strength
- Most models are also equipped with E-Z Lube® System and Nev-R-Adjust® Brakes.

FLAGSTAFF

Popular Features



- A Toylok Mounted Locking System** (Std. 228BHSE, 23SCSE, 28TSCSE, HW31SCTH, T12BH, T12RBTHSE Only)
- B Heated Mattress** (Std. Opt.)
- C Swing Down Galley** (Except LTDs, Hard Side, High Wall)
- D Metal Full Extension Drawer Guides** (Std.)
- E Solar Panel Prep** (Std. all models) The Zamp 40 amp. portable solar panel shown is sold separately.
- F 3 Speed Ventilation Fan** (Except LTDs.)
- G Water Pump with Filter** (Std.)
- H Outside Grill with Work Table** (Std. Mac, Classic, Hard Side, High Wall)
- I Add-a-Room with Privacy Panels** (Opt. all Models Except Hard Side)
- J Power Lift** (Std. Classic, High Wall 23SCSE, 28TSCSE and Opt. MAC/LTD)
- K WiFi Ranger WiFi booster** (NA on LTD models) providing a secure connection to your WIFI.
- L Easy Glide Scissorpole Bed Supports** (Except LTDs)
- M Bike Rack Option** (Most Models)
- N Under Awning LED Light** (STD All Models Except LTD's and Hard Side)
- O One-Piece Door** (Except LTD's, Hard Side) and Large Entry Assist Handle (Except LTD's)

Features

Popular Features

- P Beautiful Hardwall Shower with a residential-style flush toilet complete with 12-gallon black and gray water holding tank and monitor panel.**
(Std. High Wall)
- Q Hanging Wardrobe**
(Opt. all Models Except Mac, Hard Side & LTD's)
- R Outside Shower** (Incl. w/ Hot Water Pkg: Std: Classic, Hard Side, High Wall and Opt: Mac)
- S AM / FM stereo with Bluetooth technology, a MP3 Port and USB ports for Streaming and recharging.**
(Excludes Mac & LTD)
- T Easy Opening Deluxe Pull-up Curtains.**
(Std. Classic and High Wall)
- U Double Entry Step** (Std. 23SCSE, 28TSCSE, All HW Models, and Hard Side T21QBHW, T21TBHW, T21DMHW, T21TBHWSE)
- V Black Water Hose Storage** (Std. HW models)
- W LED Bunk Light** (Std. Classic & High Wall)
- X Molded LP Bottle Covers**
(Std. Hard Side, High Wall Only)
- Y EZ Reach Storage Trunk** (Some Models)
- Z Standard cross bars on all models excluding Hard Side Dormer units and LTDs**



Standards & Options



MODELS	LTD	M	SE	C	HW	HS	MODELS	LTD	M	SE	C	HW	HS	MODELS	LTD	M	SE	C	HW	HS
STANDARD & OPTIONAL FEATURES							Glass Stove Top Cover	--	--	--	S	--	S	3 Ceiling LED Lights and Jacks for Accessories	--	S	S	S*	--	--
Maple Interior with "Tile-Look" Linoleum	--	--	--	S	S	S	Three Burner Glass Top Stove with Oven (HS: T21QBHW Only)	--	--	--	--	S	S*	4 Ceiling LED Lights and Jacks for Accessories (C: 627D Only)	--	--	--	S*	S	--
Driftwood Interior with "Wood-Look" Linoleum	--	--	S	--	--	--	Microwave	--	--	--	--	S	S	Bunk LED Light with Fan	--	--	--	S	S	--
Two-Tone Fabric Seating	S	S	--	S	S	S	Large Built-In Icebox	S	S	S	S	S	--	LED Bunk Light (M: 228D, 246D, SE: 23SCSE, 28TSCSE Only)	--	S*	S*	S	S	--
"Leather Appearance" Seating	--	--	S	--	--	--	110V Electric Outside Accessible Refer (C: 627D Only)	--	--	--	S*	--	--	LP Leak/Carbon Monoxide Detector	S	S	S	S	S	S
Residential Style Kitchen Faucet	S	S	S	S	--	S	3 Way Refer 1.9 cu. ft.	0	0	0	--	--	--	Privacy Curtains	S	CP	CP	CP	CP	S
Stainless Steel Look Appliances and Sink	--	--	--	S	S	S	3 Way Refer 2.5 cu. ft.	--	--	--	0	--	S	Deluxe Pull Up Curtains	--	--	--	S	S	--
Double Pan Sink with High Rise Faucet (HS: T19SCHW, T21QBHW Only)	--	--	--	--	S	S*	Extra Large 3 Way Refer (T19QBHW, T21QBHW, T21TBHW, T21DMHW, T21TBHWSE Only)	--	--	--	--	0	S*	Roof Valances	--	CP	CP	CP	CP	--
Electric Water Pump	S	S	S	S	S	S	Free Standing Lite-Ply Table-High Pressure Laminate (Most Models)	S	S	S	S	S	S	Storage Net Over One Bunk (HW: N/A HW3ISCTH)	--	S	S	S	S*	--
Hot Water Package (Incl. Water Filter, Outside Shower, Six Gallon DSI Hot Water Heater, Demand Water Pump) (Opt. M: 206ST, 207, 208, SE: 206STSE, 207SE) (Std. M: 205, 227, 228, 228D, SE: 228BHSE, 23SCSE, 28TSCSE)	--	S/O*	S/O*	S	S	S	Comfortable Family Style Dinette w/ 4" Cushions	S	S	S	S	S	S	Quilted Top Bed Mattresses	S	S	S	--	--	--
Port-a-Potty (M: SE: 206STSE, C: 425D HS: T12RB, T12RBS, T12RBBHSE, T12RBTH, T12DDST, T19QBHW, T21QBHW, T21TBHWSE Only)	--	S*	S*	S*	--	S*	Residential Style Raised Panel Doors	--	--	--	S	S	S	Deluxe Memory Foam Quilted Top Bed Mattresses (HS: T21TBHW, T21TBHWSE Twin Beds Converts to King)	--	--	S*	--	--	S*
Residential Flush Toilet in Cabinet (HS: T21TBHW Only)	--	--	--	--	--	S*	Wood Drawers w/ Full Extension Metal Guides	S	S	S	S	S	S	Quilted Top Innerspring Mattresses (HS: T12RB, T12RBS, T12RBBH, T12RBTH Only)	--	--	--	S	S	S*
Shower and Cassette Toilet Package Incl. Cabinet w/ Shower, Cassette Toilet and Shower Curtain. (Opt. M: 228, 228D, SE: 228BHSE) (Std. M: 205, 246D, SE: 23SCSE, 28TSCSE, C: 625D 627D HW.)	--	S*/O*	S*/O*	S*	--	S*	Large Clothes Bar	--	--	--	S	S	S	Quilted Top 60" x 80" Innerspring Mattresses (HS: T19QBHW T21QBHW, T21DMHW Only)	--	--	--	--	--	S*
Hard Wall Shower with Residential Flush Toilet and Monitor for Holding Tanks, Battery and Water Pump Switch	--	--	--	--	S	--	Hanging Wardrobe	--	--	--	0	0	0	Thermostatically Controlled Heated Mattresses (HS: T12RB, T12RBST, T12RBBH, T12RBTHSE, T19QBHW, T21QBHW, T21DMHW Only)	SO	SO	SO	SO	SO	S*
Hard Wall Shower w/ Residential Flush Toilet (HS: T21DMHW Only)	--	--	--	--	--	S*	Hanging Pantry	--	0	0	0	0	--	Leaf-Spring Axle	S	S	S	--	--	--
Spray Away Utility Hose	--	--	S	--	--	--	USB Charging Ports	--	S	S	S	S	S	Independent Torsion Axles	--	--	--	S	S	S
Antifreeze Inlet to Bypass Fresh Water Tanks When Winterizing	S	S	S	S	S	S	AM/FM Digital Media Center with Bluetooth, MP3 Player, USB & Aux. ports.	--	--	S	S	S	S	Easy Lube Axles	--	S	S	S	S	S
Fold Over Galley with Upper and Lower Storage (Std. C: 425D Only)	S	--	--	S*	--	--	TV Outlet with Cable and Satellite Hook Up	--	S	S	S	S	S	Spare Tire, Cover and Mount	S	TP	TP	TP	TP	S
Two Burner Free-Standing Range	S	--	--	--	--	--	30 Amp Detachable Power Cord w/ Storage Bag	--	S	S	S	S	S	12" Radial Tires	S	--	--	--	--	--
Swing Level Galley with Storage (N/A C: 425D, 823D)	--	S	S	S*	--	--	25 Amp Converter w/ Built in Battery Charger	S	--	--	--	--	--	13" Radial Tires w/ Aluminum Wheels (HS: Except T12RBTHSE, T12RBSSE, T21QBHW, T21TBHW, T21DMHW)	--	S	--	S	--	S*
Permanently Mounted 3-Burner Indoor Range w/ Stove Cover	--	S	S	--	--	--	35 Amp Converter w/ Built in Battery Charger	--	S	S	S	S	S	14" Radial Tires w/ Aluminum Wheels (Std. HS: T21QBHW, T21TBHW, T21DMHW)(Note: Dual Axle Models HW29SC, HW3ISCTH)	--	--	--	--	S	S*
Permanently Mounted 3-Burner Indoor Range w/ Stove Cover	--	S	S	--	--	--	12V Safety Breaker	S	S	S	S	S	S	15" Mud Rover Radial Tires, Aluminum Wheels (Std. SE Models)	--	--	S*	--	--	S*
							Roof Vent	S	--	--	--	--	--	Electric Brakes	0	S	S	S	S	S
							Three Speed Ventilation Fan	--	SO	SO	SO	SO	SO	Slam Latches on Front Trunk Side Doors (C: 823D, 425D, 625D Only)	--	--	--	S*	--	--
							Air Conditioner Wiring Kit	0	0	0	0	0	--							
							10k BTU Cool Cat Heat Pump	--	--	--	--	--	S							
							13.5k BTU Low Profile Air Conditioner (Factory Installed)	--	--	--	--	0	--							
							15k BTU Low Profile Air Conditioner (Factory Installed)	--	--	--	--	0	--							
							20k BTU Forced Air Furnace w/ Electric Ignition	0	0	0	0	0	0							
							Interior Floor Lights	--	--	--	--	S	S							
							2 Ceiling LED Lights and Jacks for Accessories	S	--	--	--	--	--							
							2 Ceiling LED Lights	--	--	--	--	--	S							



MODELS	LTD	M	SE	C	HW	HS	MODELS	LTD	M	SE	C	HW	HS	MODELS	LTD	M	SE	C	HW	HS	
EZ Reach Storage with Sliding Tray All Front Trunk Models and Rear O/D Under Bed Storage (HS: T19QBHW, T21BHWSE, T21QBHW, T21DMHW)	--	S*	S*	S*	--	S*	20 lb. LP Bottle	S	S	S	S	--	--	WiFi Ranger WiFi Booster* (N/A LTD Models)	--	S	S	S	S	S	S
Pull Out Camp Kitchen (625D only)	--	--	--	S*	--	--	Dual 20 lb. LP Bottles with Cover and Automatic LP Regulator (Std. SE: 23SCSE, 28TSCSE Only)	0	0	0*	0	--	--	Large Rear Roof Tinted Sky Light with Shade	--	--	--	--	--	--	S
28.5" Front Storage Deck w/ 200 # Weight Capacity (Std. F., SE: 22BBHSE, HS: T12BH Only)	--	S*	S*	--	--	S*	Dual 20 lb. LP Bottles with Molded Hard Cover and Automatic LP Regulator	--	--	--	--	S	S	Two Front Roof Tinted Windows with Shades	--	--	--	--	--	--	S
54" Frt. Storage Deck w/ 650 # Wt. Capacity (Std. SE: 23SCSE)	--	S*	S*	--	--	--	Diamond Plated Lower Front Cap	--	--	--	S	S	S	Fiberglass Vacuum Bonded Radius Roof w/ No Center Seam	S	S	S	S	S	S	--
57" Frt. Storage Deck w/ 650 # Wt. Capacity (Std. HS: T12RBTHSE)	--	--	--	--	--	S*	Chrome Diamond Plated Front and Side Skirt	--	--	S	--	--	--	Steel Air Conditioner Reinforcing Laminated Into Roof	S	CP	CP	CP	S	--	--
105" Front Storage Deck w/ 1300 # Weight Capacity (Std. SE: 28TSCSE, HW: HW31SCTH Only)	--	S*	S*	--	S*	--	Awning	S	S	S	S	S	--	CP 3-Stage Double Arm Lifter Posts	S	S	S	S	S	S	--
Toylok Mounted Locking System (M: 228BH, SE: All Models, HS: T12RBBH, T12RBTHSE)	--	S*	S	--	S*	S*	LED Under Awning Light Strip	--	S	S	S	S	--	Smooth Oyster Fiberglass Vacuum Bonded Exterior w/ Black Accents	--	--	--	S	S	S	S
(4) Bike Rack (N/A SE: 23SCSE, 28TSCSE HS: T12RBTHSE) (Note: HS: T12RB - 2 Bikes only)	0	0*	0*	0	0*	0*	Awning/Screen Room	--	--	--	--	--	0	Lower Door Operational in Closed Position	S	S	S	S	S	S	--
ProRac Systems Std. on all except LTD, MACs & Dormer models	--	--	S*	S	S	S*	Screen Room w/ Privacy Panels	0	0	0	0	0	--	Five Piece Sectionalized Vinolon Supreme Tenting	S	S	S	S	S	S	--
ProRac Systems Upright Bike Carrier	--	--	0	0	0	0	Outdoor Gas Grill w/ Worktable	0	S	S	S	S	S	Tent Permanently Attached on Bunk Ends and Slide Out	S	S	S	S	S	S	--
ProRac Systems Kayak Carrier	--	--	0	0	0	0	Outside Speaker	--	--	S	S	S	S	Plywood Bunk Ends	S	S	S	S	S	S	--
ProRac Systems Load Stops	--	--	0	0	0	0	Patio Light (LTD: 206LTD Only)	S*	CP	CP	CP	S	S	Full Perimeter Aluminum Bed Frames	S	S	S	S	S	S	--
ProRac Systems Tie Downs	--	--	0	0	0	0	Courtesy Light on Front (SE: 228BHSE 23SCSE, 28TSCSE, HS: All Models)	--	S*	S*	--	--	S	Easy Glide Scissor Pole Bed Supports	--	S	S	S	S	S	--
Power Lift System (Std. SE: 23SCSE 28TSCSE)	0	0*	0*	S	S	--	NOV Exterior Outlet (206LTD only)	S*	CP	CP	CP	S	S	Powder Coated Rafter Poles and Bed Bows	S	S	S	S	S	S	--
Gas Strut Lift Assist (HS: N/A HW Models)	--	--	--	--	--	S*	Black Water Hose Storage	--	--	--	--	S	--	Tinted Vinyl Windows	S	S	S	S	S	S	--
Power Roof Lift Assist (HS: T19QBHW, T21QBHW, T21TBHW, T21DMHW Only)	--	--	--	--	--	S*	Door Step	S	TP	--	TP	--	S*	Large, Opening Picture Window	--	--	--	--	--	--	S
Built-in A-Frame Mounting Provision for Equalizer							Double Door Step (SE: All Models, HW: All Models, HS: T12RBTH, T12RBSSE, T21QBHW, T21TBHW, T21DMHW)	--	--	TP	--	TP	S*	One Piece Undercoated Structure Wood Floor	S	S	S	S	S	S	S
Hitch Bar Installation	S	S	S	S	S	S	One Piece Screen Door	--	S	S	S	S	--	Powder Coated Tubular Steel Frame	S	S	S	S	S	S	S
Battery Box and Wiring Kit	0	S	S	S	S	S	Vented Entrance Door Window w/ Screen	--	--	--	--	--	S	Rear Crank Down Stabilizer Jacks w/ Sand Pads	S	--	--	--	--	--	--
Solar Panel Prep	S	S	S	S	S	S	Folding Grab Handle	--	S	S	S	S	S	(4) E-Z Crank-Down Stabilizer Jacks w/ Sand Pads	--	S	S	S	S	S	S
40 Watt Solar Panel	0	0	0	0	0	0	Exterior Graphic Design	S	S	--	S	S	S	Seamless, High Density Polyethylene Wheel Wells	S	S	S	S	S	S	S
100 Watt DC, Roof Mount Solar Panel with 300 Watt AC Inverter*. (207SE & T12RBTHSE ONLY)	--	--	S*	--	--	S*	Travel Pack (Incl. Spare Tire, Tire Bracket, Tire Cover, Installed Step)	--	0	0	0	0	--	11 Gallon Fresh Water Tank	S	--	--	--	--	--	--
							Convenience Pack (Incl. Privacy Curtains, Roof Valances, A/C Bracing, Patio Light, NOV Exterior Outlet)	--	0	0	0	0	--	Under Floor 20 Gallon Fresh Water Tank	--	S	S	S	S	S	S
							STANDARD CONSTRUCTION FEATURES							12 Gallon Gray Water Holding Tanks	--	--	--	--	--	S	--
							Completely Enclosed Living Area	--	--	--	--	--	S	12 Gallon Black Water Holding Tank	--	--	--	--	--	S	--
							Fiberglass Vacuum Bonded Roof with Metal Interior Roof	--	--	--	--	--	S	2000 lb. Tongue Jack w/ Swivel Wheel	S	S	S	S	S	S	S
														Power Front Jack	--	--	--	--	0	0	
														7-Way Pigtail Plug	S	S	S	S	S	S	SS

LTD = LIMITED, M = MAC, SE = SPORTS ENTHUSIAST PACKAGE, C = CLASSIC, HW = HIGH WALL, HS = HARD SIDE / HARD SIDE HW / HARD SIDE SE

S = STANDARD, 0 = OPTIONAL, -- NOT AVAILABLE, TP OR CP = OPTION PACKS, * = SELECTED MODELS

LOOK FOR OUR OTHER POPULAR LINES OF FLAGSTAFF CAMPING TRAILERS.

FREE MEMBERSHIP
to Forest River Owners' Group

www.forestriverfrog.com



CUSTOMER SATISFACTION



www.ForestRiverBuyLocal.com



PRE-DELIVERY INSPECTION FACILITY

20,000 square feet of quality assurance. The bare essentials for a premium product. This state-of-the-art facility gives immediate daily feedback to production for quality assurance in every unit built.

24/7 EMERGENCY ROADSIDE ASSISTANCE

For a worry-free ownership experience Forest River includes one year of Coach-Net RV Technical & Roadside Assistance with each RV purchase. Whether new to the RV lifestyle or an experienced RV enthusiast, Forest River owners have 24/7 access to technical, operational and emergency road service coverage throughout the US & Canada. Coach-Net's fast, dependable service is just a phone call away.

Coach-Net®
RV Technical & Roadside Assistance



Flagstaff E-Pro Travel Trailers



Flagstaff Micro Lite & Shamrock



Flagstaff Super Lite Travel Trailers & Fifth Wheels



Flagstaff V-Lite, Classic Super Lite Travel Trailers & Fifth Wheels

Specification Definitions

GVWR (Gross Vehicle Weight Rating) - is the maximum permissible weight of the unit when fully loaded. It includes all weights, inclusive of all fluids, cargo, optional equipment and accessories. For safety and product performance do NOT exceed the GVWR.

GAWR (Gross Axle Weight Rating) - is the maximum permissible weight, including cargo, fluids, optional equipment and accessories that can be safely supported by a combination of all axles.

UVW (Unloaded Vehicle Weight)* - is the typical weight of the unit as manufactured at the factory. It includes all weight at the unit's axle(s) and tongue or pin and LP Gas. The UVW does not include cargo, fresh potable water, additional optional equipment or dealer installed accessories.

*Estimated average based on standard build optional equipment.

CCC (Cargo Carrying Capacity)** - is the amount of weight available for fresh potable water, cargo, additional optional equipment and accessories. CCC is equal to GVWR minus UVW. Available CCC should accommodate fresh potable water (8.3 lbs per gallon). Before filling the fresh water tank, empty the black and gray tanks to provide for more cargo capacity.

** Estimated average based on standard build optional equipment

Each Forest River RV is weighed at the manufacturing facility prior to shipping. A label identifying the unloaded vehicle weight of the actual unit and the cargo carrying capacity is applied to every Forest River RV prior to leaving our facilities.

The load capacity of your unit is designated by weight, not by volume, so you cannot necessarily use all available space when loading your unit.

FLAGSTAFF

Warranty

FOR DETAILS ON FLAGSTAFF'S COMPLETE WARRANTY PROGRAM, SEE YOUR FLAGSTAFF DEALER. When it comes to backing products with the same quality and commitment it does when it begins the manufacturing process, the only name you have to remember when you're looking for a recreational vehicle is Flagstaff. Flagstaff offers the following additional limited warranties to the original purchasers. Consult written warranty for details.

1. Five-year roof warranty (Excludes Hardsides),
2. Twenty-five-year floor warranty,
3. Five-year frame warranty,
4. Five-year tent warranty,
5. Ten-year warranty on torsion axle suspension,
6. Limited lifetime warranty of lifter system (Excludes Hardsides)



Learn More
Scan this barcode using a QR Reader on your smart phone to learn more about Forest River.



A Berkshire Hathaway company.



201 WEST ELM MILLERSBURG, IN 46543 WWW.FORESTRIVERINC.COM/FLAGSTAFF 574.642.2640

YOUR FLAGSTAFF DEALER

All information contained in this brochure is believed to be accurate at the time of publication. However, during the model year, it may be necessary to make revisions and Forest River, Inc., reserves the right to make all such changes without notice, including prices, colors, materials, equipment and specifications as well as the addition of new models and the discontinuance of models shown in this brochure. Therefore, please consult with your Forest River dealer and confirm the existence of any materials, design or specifications that are material to your purchase decision. Litho. U.S.A FOR 1432 P&W: 2017.08.05