



## Jay Flight SLX



Serial #: 1UJBC0BP8T16Y0576  
Model: 262RLS JAY FLIGHT SLX TT

Model Year: 2026 Dealer Name: TED'S RV LAND  
28501 STATE HIGHWAY 55  
PAYNESVILLE, MN 56362  
USA

### Standard Equipment

THE FOLLOWING ITEMS ARE STANDARD ON THIS MODEL

#### STANDARD EXTERIOR EQUIPMENT

- 30-amp service
- 8K BTU wall mount A/C (single axle models)
- 13.5K BTU Roof A/C (double axle models)
- Axles with electric, self-adjusting brakes and easy-lube hubs
- Exterior cable TV hookup
- Fully-integrated A-frame
- Galvanized-steel, impact resistant wheel wells
- Large exterior downspouts
- LP quick connect (outside grill prep) (N/A on Sport Edition)
- Magnum Truss™ Roof System
- Nitrogen filled radial tires
- PVC roofing membrane (limited lifetime warranty)

#### CUSTOMER VALUE PACKAGE

- 8 cu. ft. 12V refrigerator
- AM/FM Bluetooth® stereo (N/A on single axles)
- Backup camera prep
- Bathroom skylight
- Bathroom vent
- Detachable power cord
- Entry door with window and shade prep
- Fitted bed sheet
- Q20 dark tinted privacy windows
- Keyed-Alike™ entry and baggage doors
- Large folding entry door grab handle
- LED interior and exterior light
- Microwave oven
- On-demand tankless water heater
- Power awning with LED lights
- Range hood
- MORryde Step Above® entry steps
- Spare tire with cover
- Stabilizer jacks
- Tub/shower surround
- Window shades

### Optional Equipment

OPTIONAL EQUIPMENT INSTALLED ON THIS VEHICLE BY MANUFACTURER

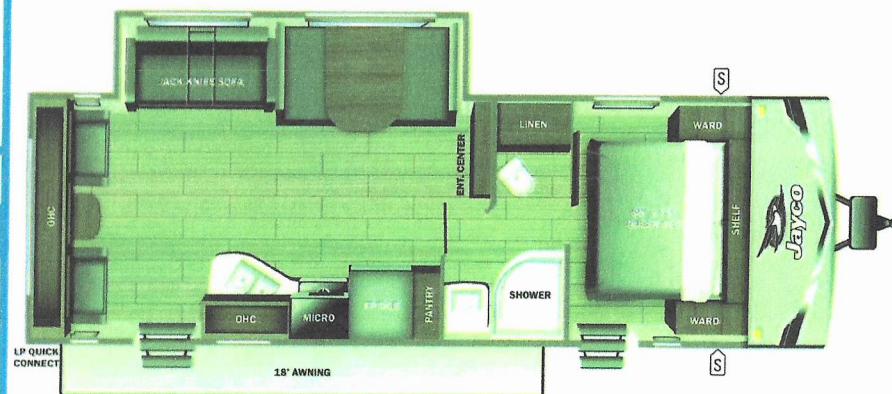
Base price	33,756.00
USA STANDARDS	n/c
CUSTOMER VALUE PACKAGE	5,250.00
OVERLANDER SOLAR PACKAGE	443.00
ELITE PACKAGE	1,493.00
15,000 BTU ROOF MOUNTED AC	300.00
NO 2ND AC	n/c
30 AMP SERVICE	n/c
DINETTE	n/c
JACK KNIFE SOFA	n/c

UNIT TOTAL 41,242.00

DEALER INSTALLED OPTIONS

Manufacturer's Suggested Retail Price \$41,242.00

TOTAL AMOUNT DOES NOT INCLUDE STATE AND LOCAL TAXES OR LICENSE FEES. THE PRICE SHOWN ABOVE MAY OR MAY NOT BE REPRESENTATIVE OF THE ACTUAL SELLING PRICE OF SIMILAR RECREATIONAL VEHICLES IN YOUR AREA.



UVW  
6649 lbs



Sleeps



Length  
31' 0.75"

#### DIMENSIONS

Exterior height:.....132.88"  
Exterior width:.....96.00"

#### WEIGHTS

GVWR:.....7900  
GAWR (front):.....3500  
GAWR (rear):.....3500

Approx. Gross Cargo Carrying Capacity (GCCC):.....1251

#### TIRES

Tire size (front):.....ST205/75R14D  
Tire size (mid):.....  
Tire size (rear):.....ST205/75R14D  
Tire size (spare):.....ST205/75R14D

#### CAPACITIES

Fresh water tank (gals.):...52.00  
Gray water tank (gals.):...39.00  
Black water/toilet tank (gals.):...39.00  
Propane (lbs.):...40  
Propane (gals.):...9  
Water heater (gals.):...0.25

#### SEATING & SLEEPING

\*\*\*Some dimensions may be rounded and may vary from the actual dimensions\*\*\*

\*\*\*Weights may be estimated calculations and may vary from the actual weight

- refer to the vehicle weight labels for actual weights\*\*\*

Floorplans, features and specifications are subject to change without notice.

**2+3**  
YEAR | YEAR  
LIMITED STRUCTURAL  
WARRANTY