



Eagle



Serial #: 1UJCA0BUXT1WE0057
Model: 335LSTS EAGLE FW

Model Year: 2026 Dealer Name: TED'S RV LAND
28501 STATE HIGHWAY 55
PAYNESVILLE, MN 56362
USA

Standard Equipment

THE FOLLOWING ITEMS ARE STANDARD ON THIS MODEL

STANDARD EXTERIOR EQUIPMENT

- 1.5 in. fresh water drain valve
- 5 in. Magnum Truss™ w/ Plywood Roof Decking
- Alpha Ply TPO Roof Membrane (thickest roof membrane w/ Limited Lifetime Warranty)
- 50-amp detachable power cord
- LED lighting in pass through area
- Auto-grade vinyl graphics
- Automotive style front cap with max turn radius (painted on select models)
- Black tank flush
- Additional Dump Valve @ Termination
- LED light & Switch at Termination
- Climate Shield™ zero-degree tested weather protection:
- * Fully enclosed and heated underbelly (ducted)
- * 35,000 BTU furnace
- * Double layer fiberglass batt insulation in ceiling and floor
- * Double sided radiant barrier insulation (roof, floor and behind cap)
- * PEX plumbing
- Commercial grade rubber flooring in pass through area
- Dual 30 lb. LP bottles
- Factory installed roof ladder
- Galvanized steel coated outside kitchens
- HELIX Cooling System™ (industry exclusive):
- * Jayco exclusive insulated dual duct design
- * Directional and closeable A/C vents
- * Larger return air vents with user accessible filters
- Independent satellite and cable hookups (outside kitchens and/or pass through storage areas)
- LED exterior lighting package
- LP quick connect for gas giddle (next to JayPort)
- Metal slam latch baggage doors
- Nautilus 2.5 water connections
- Nitrogen filled undermount spare tire (16 in.)
- Quick connect water connections (door side hot/cold and off door side cold only)
- Slide topper/awning prep
- Stronghold VBL™ walls (laminated sidewalls, rear walls and slide out walls)
- Rear Camera Prep

4 STAR HANDLING PACKAGE (MANDATORY)

- Dexter® Axles with NEV-R-Adjust® brakes and EZ Lube® hubs
- 16" Rainier "H" Rated tires
- MORyde® CRE-3000™ rubberized suspension
- Wet bolt fasteners with bronze bushings

COMFORT PLUS PACKAGE (MANDATORY)

- 15,000 BTU "Whisper Quiet" Bedroom A/C
- BMFio Bluetooth® light switches throughout
- King bed (72 in. x 80 in.) mattress with under-bed storage
- Larger exterior baggage door sizes
- Second power awning (diminable LED lights) (select models)
- 16 cu. ft. 12V refrigerator
- LED lights with dimmer switches and motion activated (throughout interior)
- SpartanLync TPMS Monitoring
- JAYCOMMAND® "Smart RV System" (Pro Tablet)
- Custom Padded Headboard w/ Cell Phone holders
- Extended Roll-Top Dinette Table

STANDARD INTERIOR EQUIPMENT

- 2-piece high gloss bathroom surround
- Teak Seat Shower Prep
- 5/8 in. tongue-and-groove plywood flooring
- 75 lb. full extension drawer guides
- 30" x 22" Shower Skylight
- Bedroom TV, SAT, CABLE prep
- C.P.A.P. prepped bedroom (both sides)
- Extra 120V power outlets in kitchen and slide rooms (where applicable)
- Gas strutted under bed storage
- High Sheen handcrafted door/drawer fronts
- Medicine cabinet with custom framed mirror
- Kitchen faucet with pull-out sprayer
- Porcelain foot flush toilet
- Residential vinyl flooring throughout (NO CARPET)
- Theater seating (select models)
- Trifold hide-a-bed sofa with residential memory foam sleep surface (select models)
- USB-C 12V charging ports (multiple locations throughout)
- Water Shutoff at all faucet locations
- NuVolH2O Water Treatment System (filters included)
- 100% No Floor Heat Vents
- 4" Interior Ceiling Fan Lighting (4000K lumen)

CUSTOMER VALUE PACKAGE (MANDATORY)

- 15,000 BTU "Whisper Quiet" A/C and bedroom A/C prep
- 4K Ultra LED HD Smart TV in living room (varies from 50" to 65")
- 50-amp service with dual A/C ducts
- 60,000 BTU on-demand tankless water heater
- Custom machined aluminum rims
- Electric patio awning (integrated dimmable LED lights w/ JAYCOMMAND)
- Hidden hinges on cabinet doors
- Interior "Blue Sync" Audio Connect w/ MB Quart Sound (TV & Phone)
- Exterior "Blue Sync" Audio Connect w/ MB Quart Sound (TV & Phone)
- Keyed-Alike™ lock system
- MORyde Step Above™ entrance steps (main entrances) with blue LED light
- Overlander I solar package
- Rain proof bathroom power vent
- Rear 2 in. towing receiver (4-pin connector on fifth wheels only)
- WinGuard Air 360 + Antenna & Router Prep (NOW 5G)
- Inverter pre-wire (multiple locations throughout)

LUXURY PACKAGE (MANDATORY)

- Blackout roller shades with reflective side throughout
- Electric auto-leveling
- JayPort 2 in. mount (for outside accessories)
- Residential style glass shower door
- Washer/dryer prep (select models)
- GE 30 in. over-the-range black and stainless microwave with exhaust fan
- GE black and stainless 21 in. range with edge to edge grates
- Multi-Function "ALL in ONE" Black Stainless-steel kitchen sink
- Magnetic Catches for all Drawers & Doors
- Solid Surface Kitchen Countertops
- LED fireplace with 5,000 BTU electric space heater
- Exterior Light & Outlet at the JayPort Location

Optional Equipment

OPTIONAL EQUIPMENT INSTALLED ON THIS VEHICLE BY MANUFACTURER

Base price	79,875.00
USA STANDARDS	n/c
CUSTOMER VALUE PACKAGE	6,263.00
LUXURY PACKAGE	7,493.00
FOUR STAR HANDLING PACKAGE	3,743.00
COMFORT PLUS PACKAGE	6,750.00
OVERLANDER II SOLAR PACKAGE	1,193.00
STANDARD CAMPING PACKAGE	n/c
FRAMELESS DUAL PANE TINTED SAFETY GLASS WINDOWS	2,093.00
STANDARD BRAKE	n/c
FREE STANDING ROLL TOP TABLE, CHAIRS(2)	n/c
KING BED	n/c

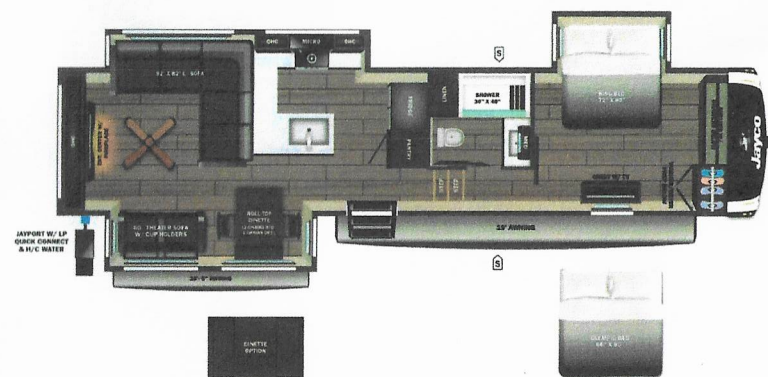
UNIT TOTAL

107,410.00

DEALER INSTALLED OPTIONS

Manufacturer's Suggested Retail Price \$107,410.00

TOTAL AMOUNT DOES NOT INCLUDE STATE AND LOCAL TAXES OR LICENSE FEES. THE PRICE SHOWN ABOVE MAY OR MAY NOT BE REPRESENTATIVE OF THE ACTUAL SELLING PRICE OF SIMILAR RECREATIONAL VEHICLES IN YOUR AREA.



UVW
11852 lbs



Sleeps



Length
38' 4.63"

DIMENSIONS

Exterior height:.....159.50"
Exterior width:.....97.00"

WEIGHTS

GVWR:.....13800
GAWR (front):.....6000
GAWR (rear):.....6000
Approx. Gross Cargo Carrying Capacity (GCC):.....1948

TIRES

Tire size (front):.....
Tire size (mid):.....
Tire size (rear):.....
Tire size (spare):.....

CAPACITIES

Fresh water tank (gals.):...81.00
Gray water tank (gals.):...87.00
Black water/toilet tank (gals.):...50.00
Propane (lbs.):.....60
Propane (gals.):.....14
Water heater (gals.):.....0.25

SEATING & SLEEPING

2+3
YEAR YEAR
LIMITED STRUCTURAL
WARRANTY

Some dimensions may be rounded and may vary from the actual dimensions

***Weights may be estimated calculations and may vary from the actual weight
- refer to the vehicle weight labels for actual weights***

Floorplans, features and specifications are subject to change without notice.