



2016



BUILD LASTING MEMORIES  
#JESAYCO



**2**  
YEAR  
WARRANTY



# #LETSJAYCO

When you travel with Jayco, fun is the only thing on the agenda. That's because we go the extra mile so you can live in the moment. From comfortable, amenity-packed floorplans to weather-shielding insulation and superior frame construction, you'll have everything you need to adventure every day and make yourself at home every night. Let's get away. Let's make it count. Let's Jayco — and make memories that last a lifetime.

## GENERATIONS OF FAMILY FUN

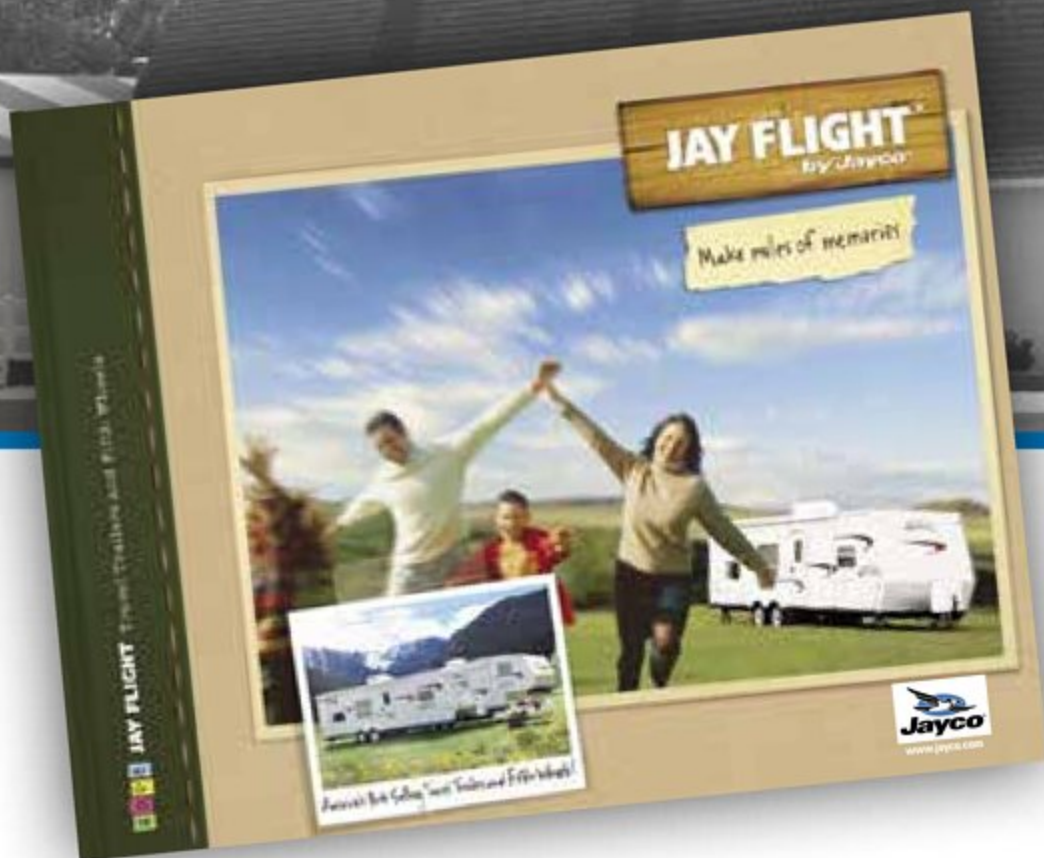


# JAY FLIGHT

1968 TO TODAY: GENERATIONS OF FAMILY FUN

If it's not done well, it's not worth doing. That was Jayco founder Lloyd Bontrager's philosophy. He thought that his family deserved a better RV—and that yours does, too. One that's sturdy, carefully designed and built to last. Nearly 50 years later, his legacy lives on—in the Jay Flight.

**Discover America's No. 1-selling travel trailer.**

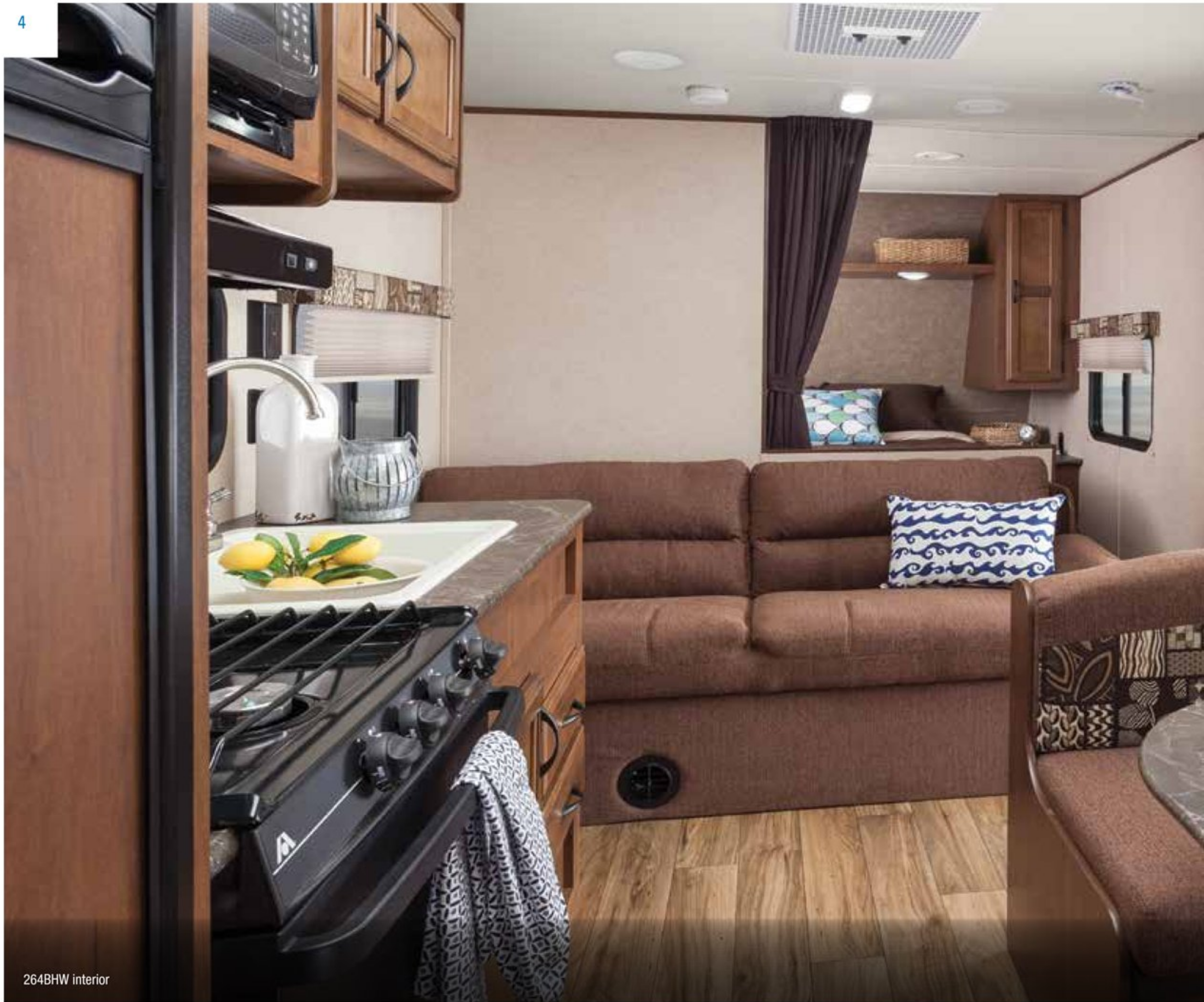


## JAY FLIGHT THROWBACK

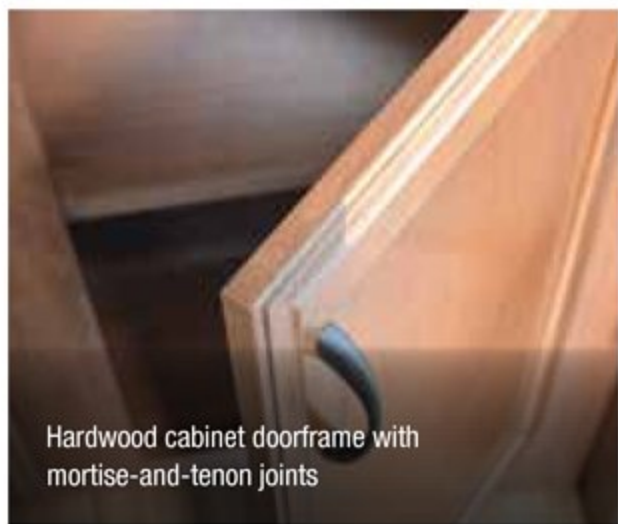
Here's our 2005 Jay Flight brochure cover—the year we first became America's best-selling travel trailer.

SHARE YOUR PHOTOS AND STORIES ON SOCIAL MEDIA WITH [#LETSJAYCO](https://www.instagram.com/letsjayco)





264BHW interior



Hardwood cabinet doorframe with mortise-and-tenon joints



Power awning and exterior speakers



Plywood dinette and bunk bases



Bath skylight



Denver Mattress®



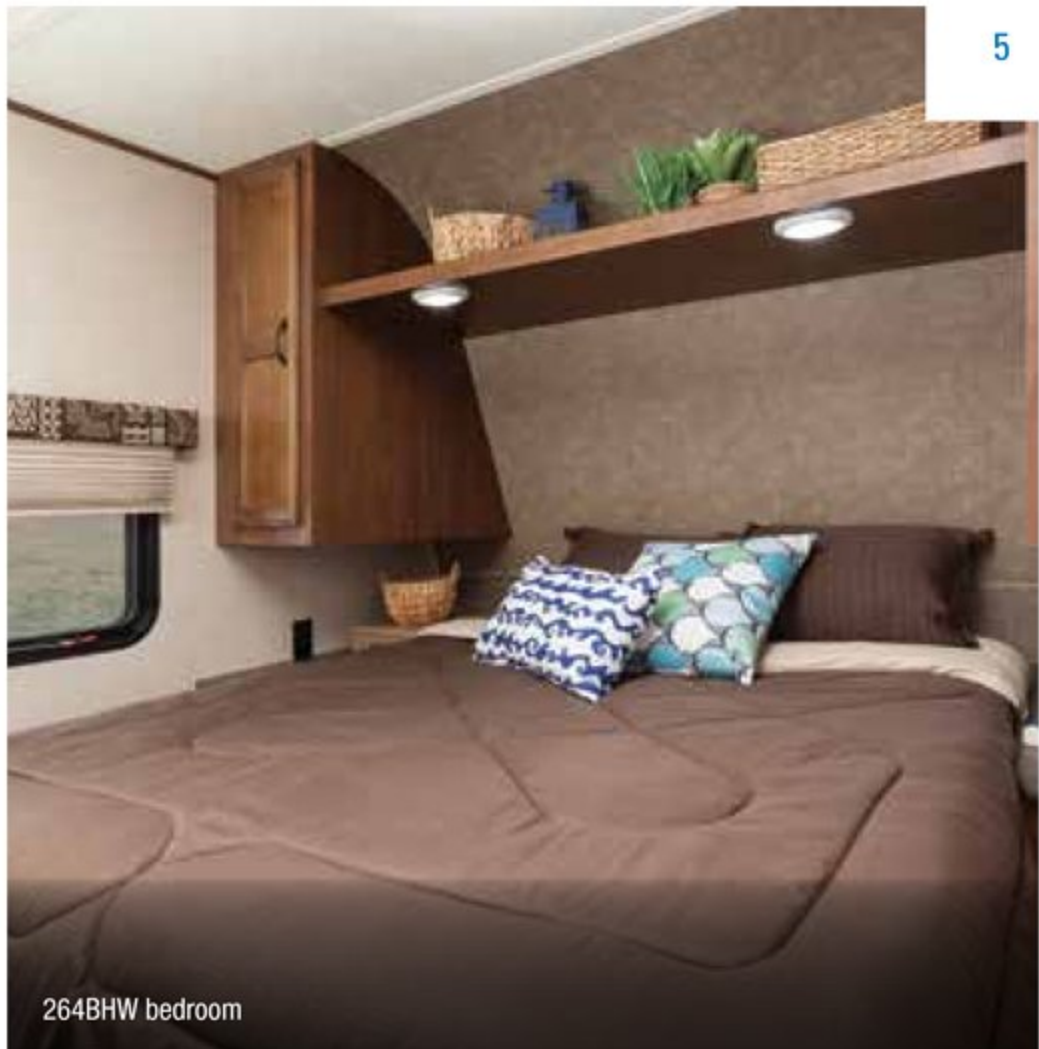
Interior LED lighting



Denver Mattress® bunk mats



75-pound-capacity, ball-bearing drawers



264BHW bedroom

# JAY FLIGHT SLX CORRELY

When towing isn't a concern, you're free to have fun. And the lightweight Jay Flight SLX is the perfect place for it. Durable construction, brand-name appliances and comfortable sleeping options make the memories even sweeter.



195RB interior

# ELITE PACKAGE



Large entry door grab handle



MOR/ryde® CRE3000™ suspension



Multifunctional digital remote



Skylight with shade

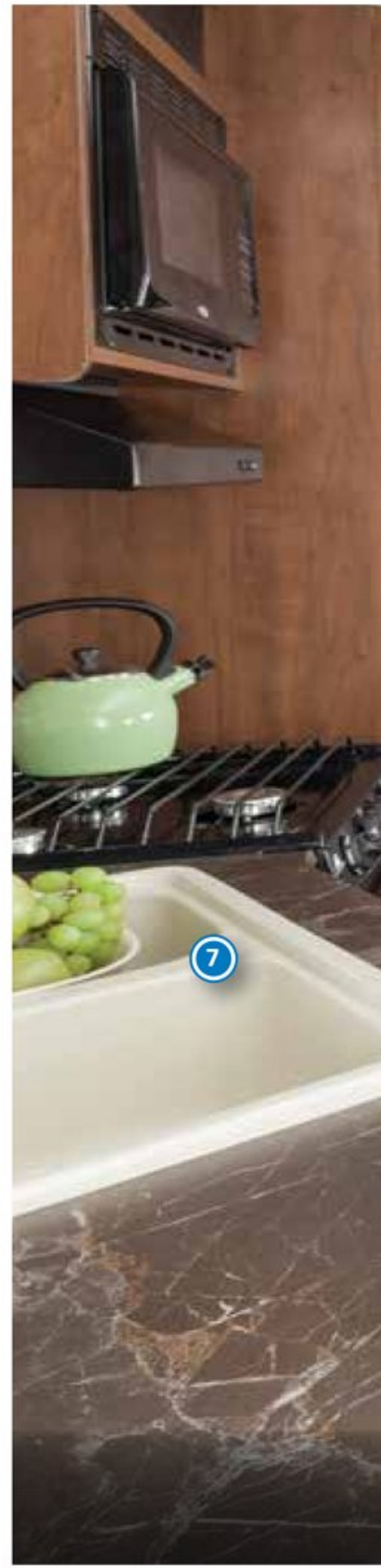


Upgraded faucet with pullout sprayer and sink covers



Raised-panel, hardwood cabinet doors

Black tank flush • 80-gallon fresh water capacity • Rear ladder • Refrigerator door inserts (select models)  
Hardwood drawer fronts • Porcelain toilet



## JAY FLIGHT FOLLOW THE FUN

There's something for everyone with the 2016 Jay Flight lineup. With models ranging from 23 to 38 feet, our family-friendly floorplans offer options you'll love—at a value that's unbeatable.



### MAIN INTERIOR KEY:

1. Interior LED lighting
2. Decorative lighting above dinette and on slideout wall
3. Vented windows on slideout end walls
4. Storage under booth dinette with sliding trays
5. Wood-look vinyl flooring
6. 8-cubic-foot refrigerator
7. Large 60/40 sink with high-rise faucet
8. Directional and closeable A/C ducts
9. Hardwood cabinet framing with mortise-and-tenon joints

## POPULAR JAY FLIGHT OPTIONS



Fiberglass sidewalls with frameless windows



Tri-fold hide-a-bed with Denver Mattress (1)



Tri-fold hide-a-bed with Denver Mattress (2)



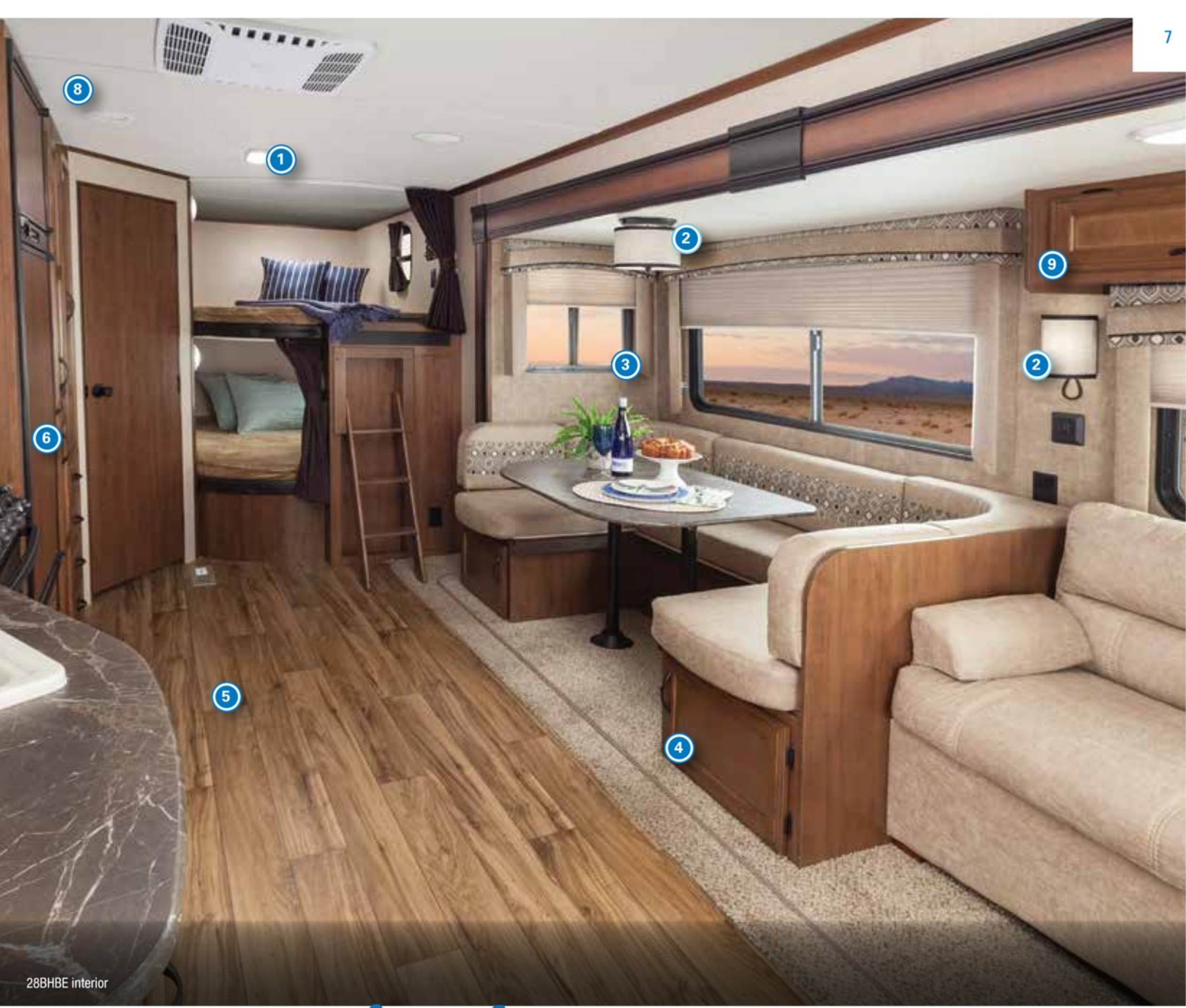
**Thermal Package:** Insulated, heated and enclosed underbelly and two-sided reflective foil in main roof and slideout floors



AM/FM/CD/DVD player with MP3 hookup and Bluetooth® HDMI®



Solar prep



28BHBE interior

# STANDARD FEATURES



75-pound-capacity, ball-bearing drawer guides



Power awning with LED light strip



Utility lighting system



Steel wheel wells



Plywood dinette and bunk bases



USB/12V port in master bedroom



Central command center



Denver Mattress bed and bunk mats

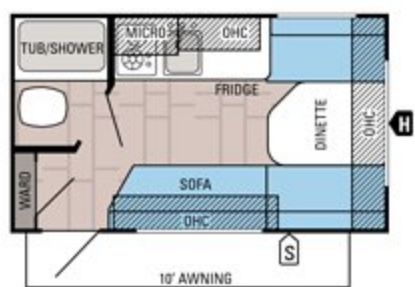


Shoe garage (select models)



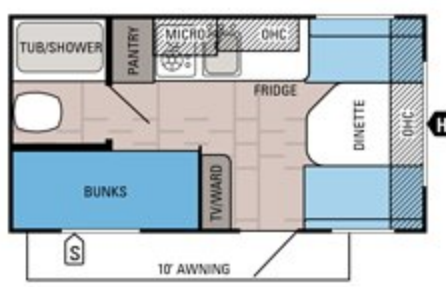
Wood bedroom doors (most models)

## JAY FLIGHT SLX FLOORPLANS



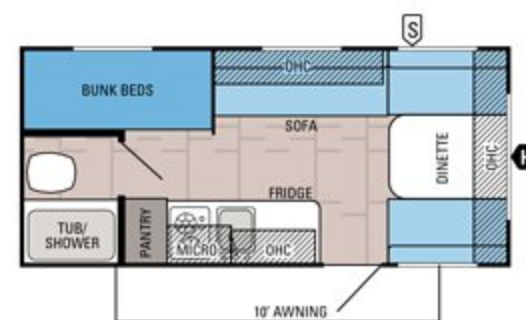
**JAY FLIGHT SLX | 145RB**

Ext. Lgth: 16' 6" Ext. Ht: 111"  
Unloaded Wt (lbs.): 2,340 Sleeps: 2-3



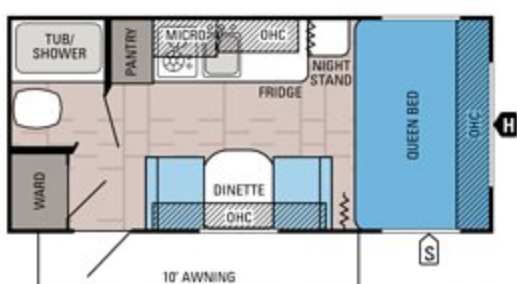
**JAY FLIGHT SLX | 154BH**

Ext. Lgth: 17' 10" Ext. Ht: 111"  
Unloaded Wt (lbs.): 2,540 Sleeps: 3-4



**JAY FLIGHT SLX | 184BH**

Ext. Lgth: 20' 0" Ext. Ht: 113"  
Unloaded Wt (lbs.): 2,775 Sleeps: 4-5



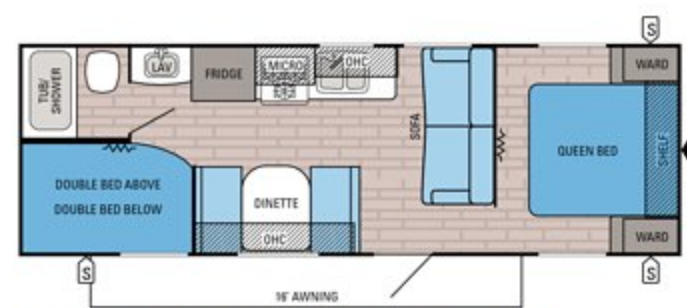
**JAY FLIGHT SLX | 185RB**

Ext. Lgth: 20' 0" Ext. Ht: 113"  
Unloaded Wt (lbs.): 2,760 Sleeps: 3



**JAY FLIGHT SLX | 195RB**

Ext. Lgth: 21' 8" Ext. Ht: 112"  
Unloaded Wt (lbs.): 2,945 Sleeps: 3



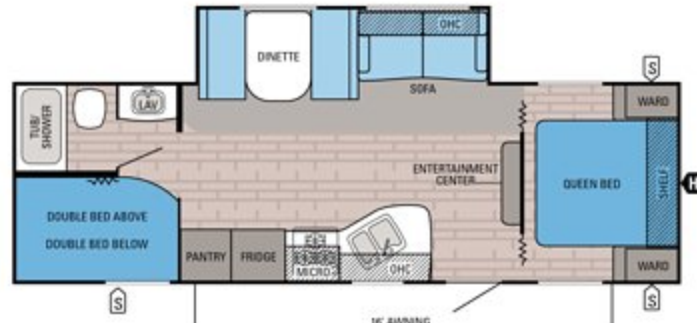
**JAY FLIGHT SLX | 264BHW**

Ext. Lgth: 29' 3" Ext. Ht: 126"  
Unloaded Wt (lbs.): 4,550 Sleeps: 8-10



**JAY FLIGHT SLX | 265RLSW**

Ext. Lgth: TBD Ext. Ht: TBD  
Unloaded Wt (lbs.): TBD Sleeps: 4-6



**JAY FLIGHT SLX | 267BHSW**

Ext. Lgth: 30' 2" Ext. Ht: 132"  
Unloaded Wt (lbs.): 5,615 Sleeps: 8-10



**JAY FLIGHT SLX | 287BHSW**

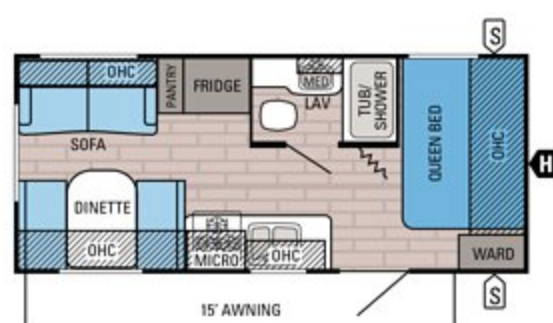
Ext. Lgth: 33' 5" Ext. Ht: 133"  
Unloaded Wt (lbs.): 6,090 Sleeps: 8-10

## JAY FLIGHT SLX SPECIFICATIONS

MODELS	DIMENSIONS				WEIGHT (LBS.)				TANKS (GALS.)		
	FLOORPLAN	EXTERIOR TRAVEL LENGTH	EXTERIOR WIDTH	EXTERIOR HEIGHT WITH A/C	INTERIOR HEIGHT	UNLOADED VEHICLE WEIGHT	DRY HITCH WEIGHT	GROSS VEHICLE WEIGHT RATING	CARGO CARRYING CAPACITY	FRESH WATER CAPACITY (INCLUDES WATER HEATER)	GREY WASTE WATER CAPACITY
145RB	16' 6"	85"	111"	73"	2,340	235	2,995	655	16	15	9
154BH	17' 10"	85"	111"	73"	2,540	305	3,200	660	16	15	9
184BH	20' 0"	85"	113"	73"	2,775	320	3,500	725	26	15	9
185RB	20' 0"	85"	113"	73"	2,760	315	3,500	740	26	15	9
195RB	21' 8"	85"	112"	73"	2,945	260	3,500	555	26	15	9
264BHW	29' 3"	96"	126"	81"	4,550	490	6,500	1,950	48	39	39
265RLSW	TBD	96"	TBD	81"	TBD	TBD	TBD	TBD	TBD	TBD	TBD
267BHSW	30' 2"	96"	132"	81"	5,615	645	7,000	1,385	44	39	39
287BHSW	33' 5"	96"	133"	81"	6,090	645	7,500	1,410	44	39	39

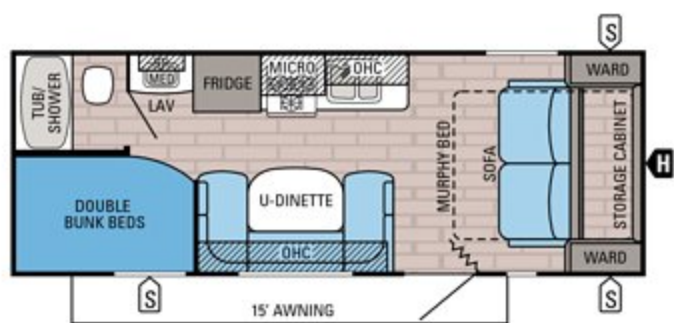


# JAY FLIGHT FLOORPLANS



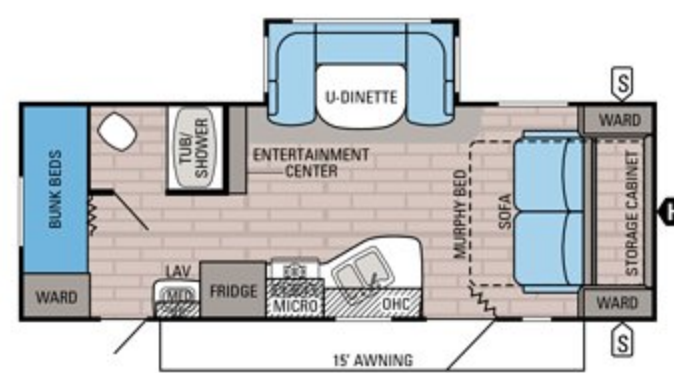
**JAY FLIGHT | 19RD** **OPTION A**

Ext. Lgth: 23' 3" Ext. Ht: 125"  
Unloaded Wt. (lbs.): 4,030 Sleeps: 4-7



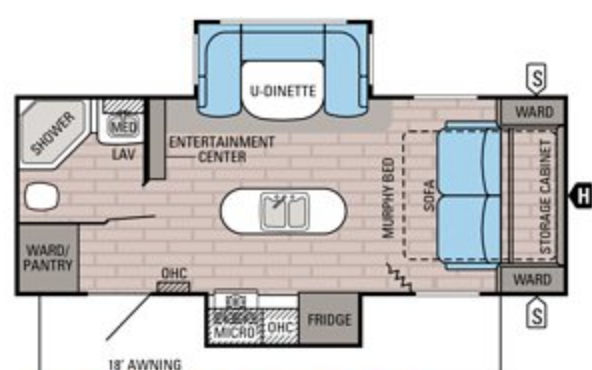
**JAY FLIGHT | 23MB** **OPTION B**

Ext. Lgth: 27' 0" Ext. Ht: 125"  
Unloaded Wt. (lbs.): 4,430 Sleeps: 4-8



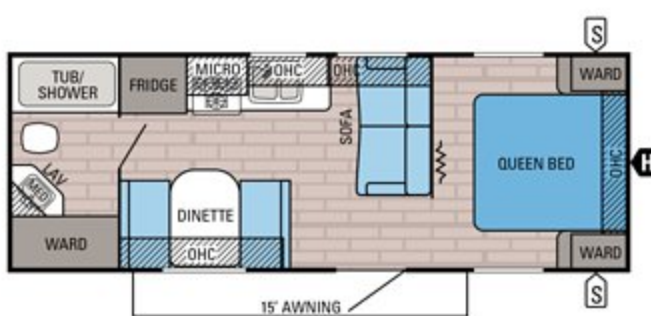
**JAY FLIGHT | 23MBH**

Ext. Lgth: 27' 2" Ext. Ht: 133"  
Unloaded Wt (lbs.): 5,345 Sleeps: 4-6



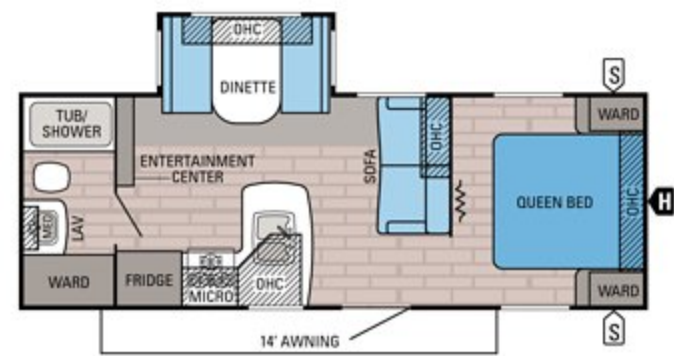
**JAY FLIGHT | 23MDS**

Ext. Lgth: 25' 11" Ext. Ht: 132"  
Unloaded Wt (lbs.): 5,475 Sleeps: 2-4



**JAY FLIGHT | 23RB** **OPTION C**

Ext. Lgth: 27' 2" Ext. Ht: 127"  
Unloaded Wt. (lbs.): 4,370 Sleeps: 4-6



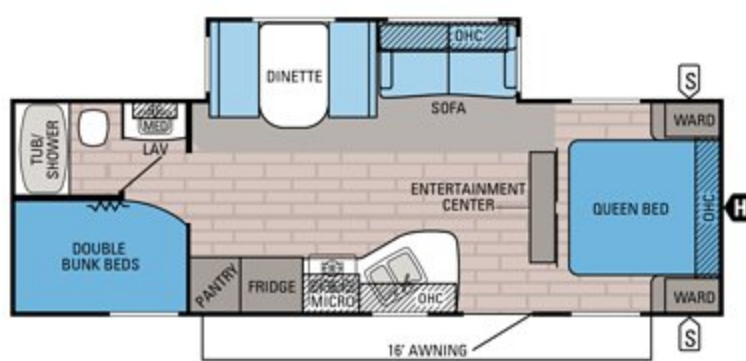
**JAY FLIGHT | 24FBS** **OPTION D**

Ext. Lgth: 27' 5" Ext. Ht: 133"  
Unloaded Wt. (lbs.): 5,115 Sleeps: 3-6



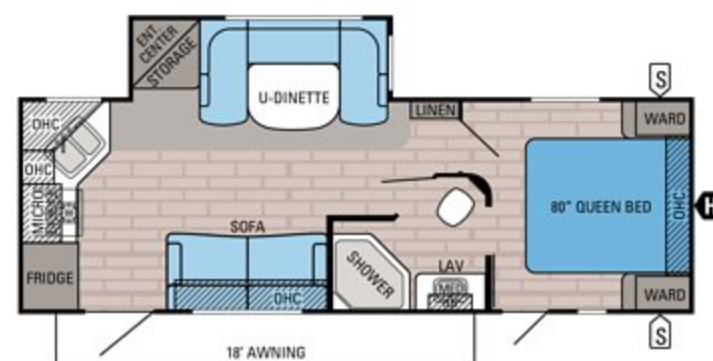
**JAY FLIGHT | 26BH** **OPTION B**

Ext. Lgth: 29' 3" Ext. Ht: 127"  
Unloaded Wt. (lbs.): 4,700 Sleeps: 6-10



**JAY FLIGHT | 26BHS** **OPTIONS: B, D, E**

Ext. Lgth: 30' 2" Ext. Ht: 124"  
Unloaded Wt. (lbs.): 5,920 Sleeps: 5-10



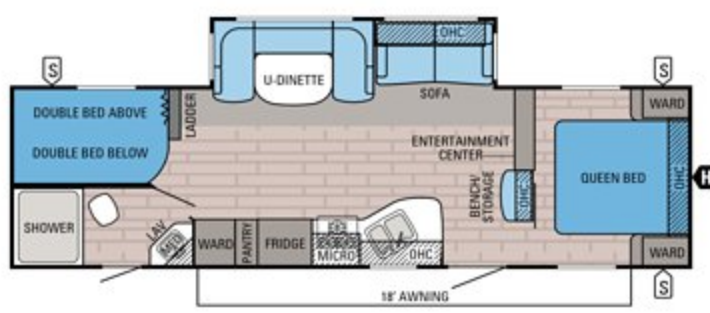
**JAY FLIGHT | 26RKS**

Ext. Lgth: 28' 10" Ext. Ht: 135"  
Unloaded Wt. (lbs.): 5,830 Sleeps: 5-6



**JAY FLIGHT | 27RLS** **OPTIONS: D, E**

Ext. Lgth: 31' 6" Ext. Ht: 134"  
Unloaded Wt. (lbs.): 6,395 Sleeps: 3-6



**JAY FLIGHT | 28BHBE** **OPTION E**

Ext. Lgth: 33' 5" Ext. Ht: 134"  
Unloaded Wt. (lbs.): 6,540 Sleeps: 9-10

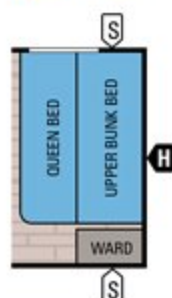


**JAY FLIGHT | 28RBDS** **OPTIONS: D, E**

Ext. Lgth: 31' 8" Ext. Ht: 135"  
Unloaded Wt. (lbs.): 6,890 Sleeps: 3-6

## OPTIONS:

**OPTION A**



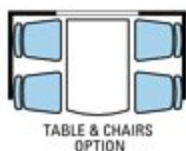
**OPTION B**



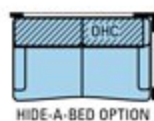
**OPTION C**



**OPTION D**



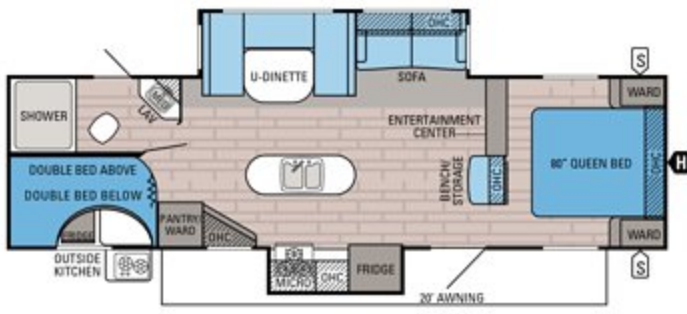
**OPTION E**



## FLOORPLAN LEGEND:

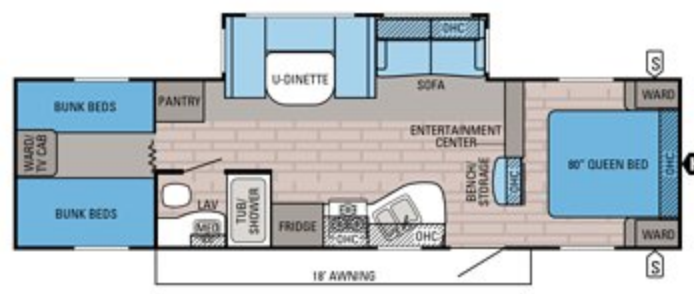
- STORAGE
- TRAILER HITCH
- LAV BATHROOM SINK
- MED MEDICINE CABINET
- MICRO MICROWAVE
- OHC OVERHEAD CABINETS
- FRIDGE REFRIGERATOR
- WARD WARDROBE

## JAY FLIGHT FLOORPLANS



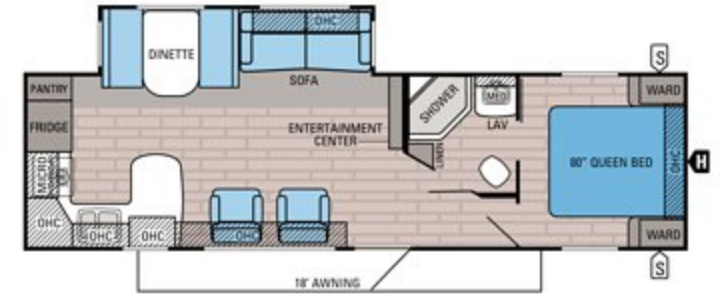
### JAY FLIGHT | 29BHDS **OPTION E**

Ext. Lgth: **34' 1"** Ext. Ht: **133"**  
 Unloaded Wt. (lbs.): **7,275** Sleeps: **8-10**



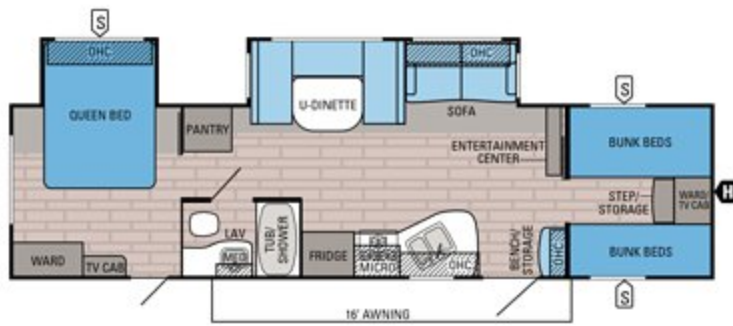
### JAY FLIGHT | 29QBS **OPTIONS: E, G**

Ext. Lgth: **34' 11"** Ext. Ht: **133"**  
 Unloaded Wt. (lbs.): **6,935** Sleeps: **8-9**



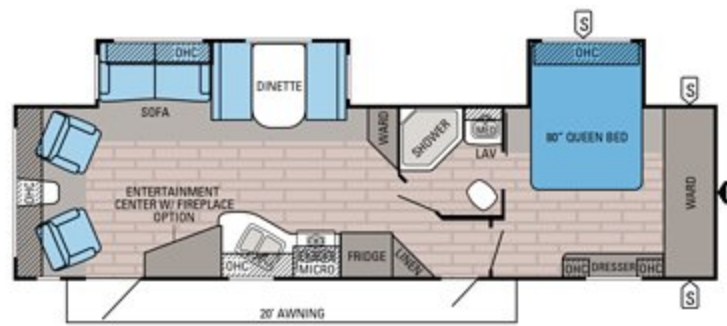
### JAY FLIGHT | 29RKS

Ext. Lgth: **33' 8"** Ext. Ht: **133"**  
 Unloaded Wt. (lbs.): **6,790** Sleeps: **3-6**



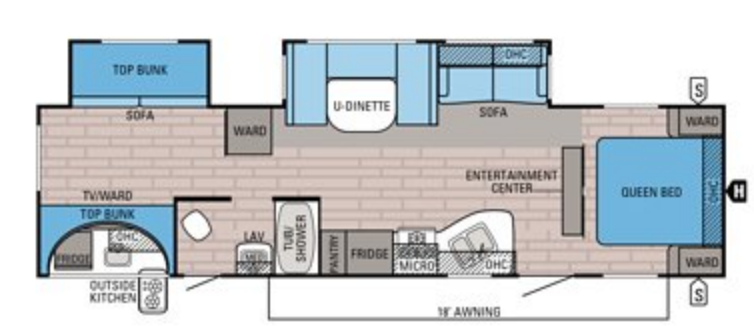
### JAY FLIGHT | 31QBDS **OPTIONS: E, H**

Ext. Lgth: **TBD** Ext. Ht: **TBD**  
 Unloaded Wt. (lbs.): **TBD** Sleeps: **9-10**



### JAY FLIGHT | 31RLDS **OPTIONS: D, E**

Ext. Lgth: **35' 11"** Ext. Ht: **133"**  
 Unloaded Wt. (lbs.): **7,610** Sleeps: **3-6**



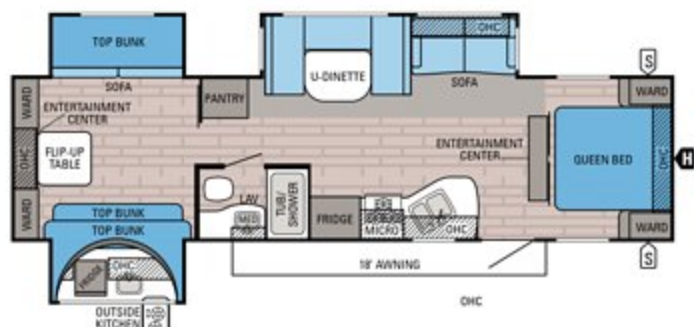
### JAY FLIGHT | 32BHDS **OPTION E**

Ext. Lgth: **35' 8"** Ext. Ht: **132"**  
 Unloaded Wt. (lbs.): **7,600** Sleeps: **8-10**



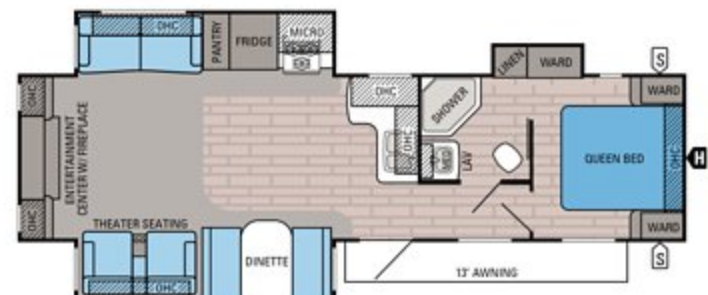
### JAY FLIGHT | 32IBTS **OPTIONS: D, E, I**

Ext. Lgth: **36' 2"** Ext. Ht: **133"**  
 Unloaded Wt. (lbs.): **7,900** Sleeps: **8-12**



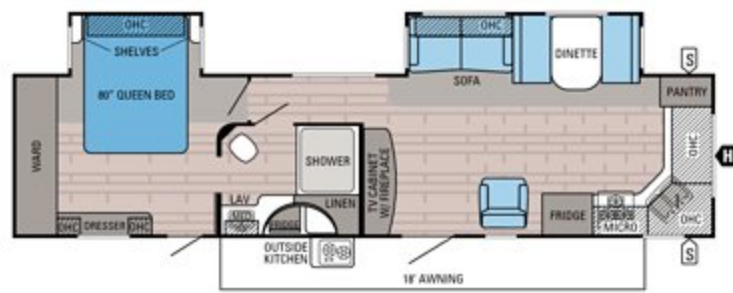
### JAY FLIGHT | 32TSBH **OPTION E**

Ext. Lgth: **35' 8"** Ext. Ht: **132"**  
 Unloaded Wt. (lbs.): **8,075** Sleeps: **8-11**



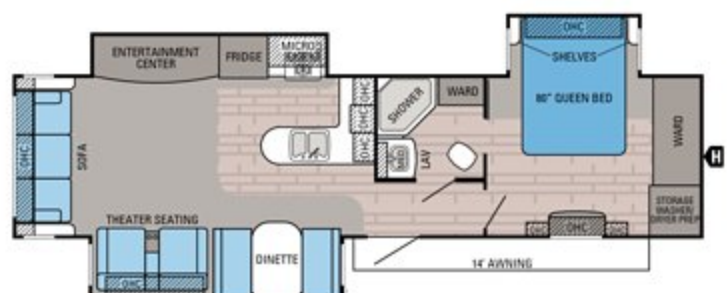
### JAY FLIGHT | 33RLDS **OPTIONS: D, E, F**

Ext. Lgth: **TBD** Ext. Ht: **TBD**  
 Unloaded Wt. (lbs.): **TBD** Sleeps: **3-6**



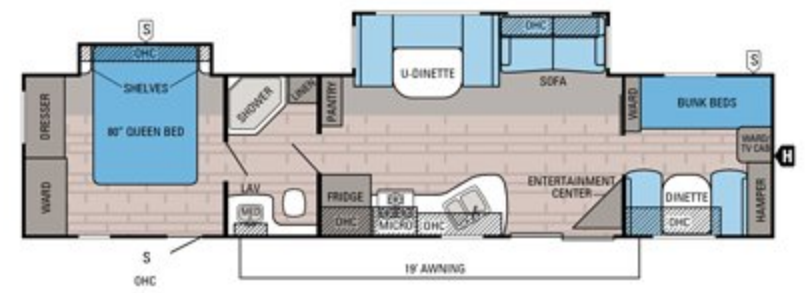
### JAY FLIGHT | 34FKDS **OPTIONS: D, E, F, J**

Ext. Lgth: **38' 1"** Ext. Ht: **131"**  
 Unloaded Wt. (lbs.): **8,100** Sleeps: **3-6**



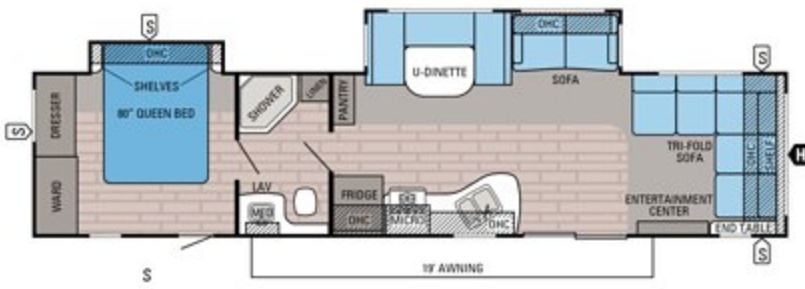
### JAY FLIGHT | 34RSBS **OPTIONS: D, F, J, K**

Ext. Lgth: **37' 6"** Ext. Ht: **133"**  
 Unloaded Wt. (lbs.): **8,440** Sleeps: **3-6**



### JAY FLIGHT | 38BHDS **OPTIONS: E, J, L, M, N**

Ext. Lgth: **40' 3"** Ext. Ht: **134"**  
 Unloaded Wt. (lbs.): **8,195** Sleeps: **8-10**



**JAY FLIGHT | 38FDDS**    **OPTIONS: E, J, L**

Ext. Lgth: **40' 3"** Ext. Ht: **134"**  
 Unloaded Wt. (lbs.): **8,185** Sleeps: **6-8**

**FLOORPLAN LEGEND:**

- S STORAGE
- H TRAILER HITCH
- LAV BATHROOM SINK
- MED MEDICINE CABINET
- MICRO MICROWAVE
- OHC OVERHEAD CABINETS
- FRIDGE REFRIGERATOR
- WARD WARDROBE

**OPTIONS:**

**OPTION A**

**OPTION B**

**OPTION C**

**OPTION D**

**OPTION E**

**OPTION F**

**OPTION G**

**OPTION H**

**OPTION I**

**OPTION J**

**OPTION K**

**OPTION L**

**OPTION M**

**OPTION N**

**JAY FLIGHT SPECIFICATIONS**

MODELS	DIMENSIONS				WEIGHT (LBS.)				TANKS (GALS.)			
	FLOORPLAN	EXTERIOR TRAVEL LENGTH	EXTERIOR WIDTH	EXTERIOR HEIGHT WITH A/C	INTERIOR HEIGHT	UNLOADED VEHICLE WEIGHT	DRY HITCH WEIGHT	GROSS VEHICLE WEIGHT RATING	CARGO CARRYING CAPACITY	FRESH WATER CAPACITY (INCLUDES WATER HEATER)	FRESH WATER CAPACITY (INCLUDES WATER HEATER & OPT. FRESH WATER TANK)	GREY WASTE WATER CAPACITY
19RD	23' 3"	96"	125"	81"	4,030	495	6,000	1,970	48	90	39	39
23MB	27' 0"	96"	125"	81"	4,430	470	6,500	2,070	48	90	32.5	32.5
23MBH	27' 2"	96"	133"	81"	5,345	625	7,250	1,905	44	82	32.5	32.5
23MDS	25' 11"	96"	132"	81"	5,475	575	7,700	2,225	44	82	32.5	39
23RB	27' 2"	96"	127"	81"	4,370	505	6,500	2,130	48	90	39	39
24FBS	27' 5"	96"	133"	81"	5,115	535	7,000	1,885	48	90	39	39
26BH	29' 3"	96"	127"	81"	4,700	475	7,000	2,300	48	90	39	39
26BHS	30' 2"	96"	124"	81"	5,920	800	7,750	1,830	44	76	39	39
26RKS	28' 10"	96"	135"	81"	5,830	655	8,400	2,570	44	82	78	39
27RLS	31' 6"	96"	134"	81"	6,395	725	8,750	2,355	44	82	39	39
28BHBE	33' 5"	96"	134"	81"	6,540	660	9,250	2,710	44	82	39	39
28RBDS	31' 8"	96"	135"	81"	6,890	755	9,250	2,360	44	82	78	39
29BHDS	34' 1"	96"	133"	81"	7,275	765	9,750	2,475	46	86	71.5	39
29QBS	34' 11"	96"	133"	81"	6,935	855	9,500	2,565	46	86	39	39
29RKS	33' 8"	96"	133"	81"	6,790	815	9,500	2,710	46	86	78	39
31QBDS	TBD	96"	TBD	81"	TBD	TBD	TBD	TBD	TBD	TBD	TBD	TBD
31RLDS	35' 11"	96"	133"	81"	7,610	1,070	10,250	2,640	46	86	39	39
32BHDS	35' 8"	96"	132"	81"	7,600	910	9,975	2,375	46	86	39	33
32IBTS	36' 2"	96"	133"	81"	7,900	1,025	10,500	2,600	46	86	39	32.5
32TSBH	35' 8"	96"	132"	81"	8,075	685	10,500	2,425	46	86	40.5	39
33RLDS	TBD	96"	TBD	81"	TBD	TBD	TBD	TBD	TBD	TBD	TBD	TBD
34FKDS	38' 1"	96"	131"	81"	8,100	1,065	10,750	2,650	46	86	71.5	39
34RSBS	37' 6"	96"	133"	81"	8,440	1,250	10,950	2,510	46	86	78	39
38BHDS	40' 3"	96"	134"	81"	8,195	1,140	10,950	2,755	50	90	39	39
38FDDS	40' 3"	96"	134"	81"	8,185	1,185	10,950	2,465	50	90	39	39

**Unloaded Vehicle Weight (UWV):** Sometimes referred to as "Dry Weight," UWV means the typical weight of this trailer as built at the factory. The UWV, as used in product literature and other promotional materials, does not include cargo, fresh water, propane, options or dealer-installed accessories.

**Gross Vehicle Weight Rating (GVWR):** GVWR means the maximum permissible weight of the trailer, including the UWV plus passengers, personal items, all cargo, fluids, options, and dealer-installed accessories. The GVWR is equal to or greater than the sum of the UWV and the CCC.

**Cargo Carrying Capacity (CCC):** CCC means the maximum weight of all passengers, personal items, food, fresh water, propane, tools, other cargo and dealer-installed accessories that can be carried by the trailer. CCC is equal to or less than GVWR minus UWV. The addition of options will decrease the CCC.

**Hitch Weight (HW):** The hitch weight, as used in product literature and other promotional materials, does not include cargo, fresh water, propane gas, options or dealer-installed accessories. The addition of these types of items will either add to or subtract from the stated hitch weight.

It is important for your safety and enjoyment that your tow vehicle be adequately sized and equipped to tow and handle the GVWR of the RV you select. Review weights and rating of your tow vehicle and consult a competent advisor for questions or advice. Whether you are new to RVing or a veteran, get a feel for the performance of your tow vehicle before heading out on the roadways. When you tow an RV, you must drive differently than when you drive a single vehicle. Practice hooking up, driving, backing up and braking in a safe environment or seek out professional instruction. Jayco affixes a weight label to each RV which lists weight information for that vehicle. See specifications chart above.

# COMPARE STANDARDS AND OPTIONS

Jay Flight SLX (7-foot)  
Jay Flight SLX (8-foot)  
Jay Flight

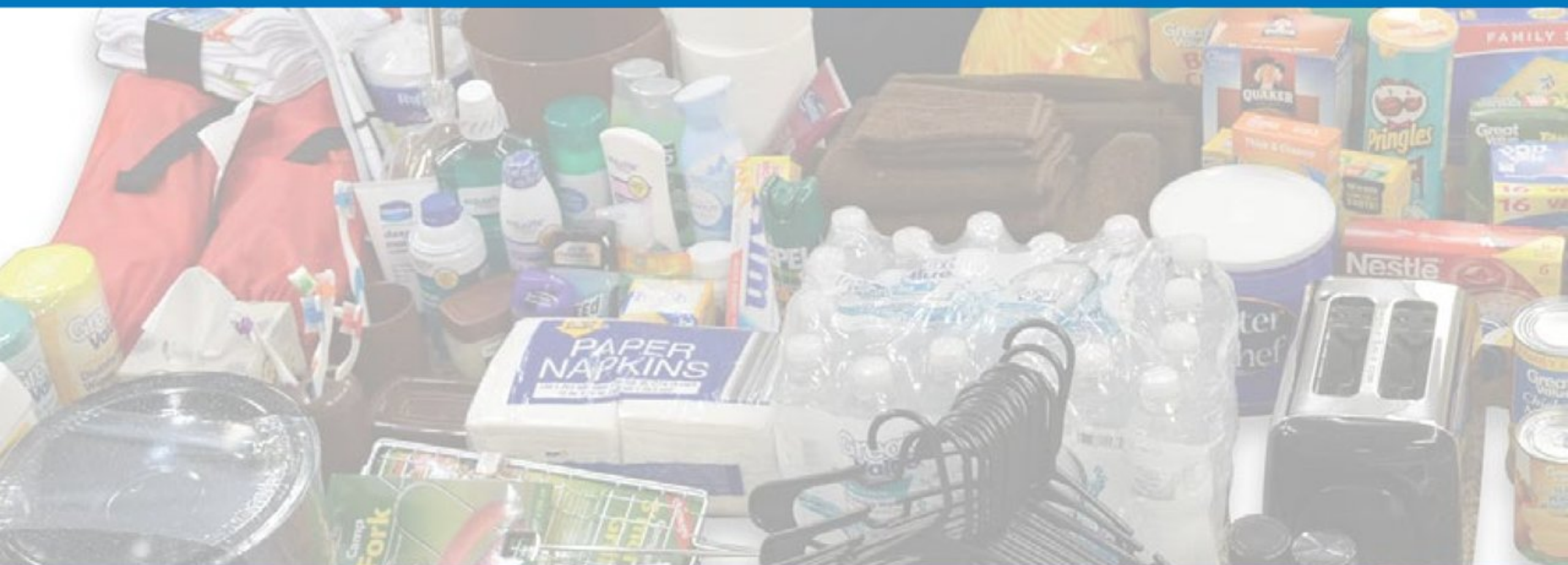
Exterior Equipment	Jay Flight SLX (7-foot)	Jay Flight SLX (8-foot)	Jay Flight
.024 mesa crimp exterior aluminum	•	•	•
4-inch cambered steel box tube frame	•	•	•
1-class cambered structural steel I-beams			•
Fully integrated A-frame	•	•	•
Fiberglass sidewalls with frameless windows			•
5/8-inch tongue-and-groove plywood floor decking		•	•
Magnum Truss™ Roof System with one-piece, seamless DiFlex II material	•	•	•
2-sided reflective foil insulation in flush-floor slideout floors		•	•
Thermal Package: Insulated, heated and enclosed underbelly and 2-sided, reflective foil insulation in main roof and slideout floors			•
Electric slideouts with enclosed gear system (slide models)		•	•
Large exterior downspouts			•
30-inch x 72-inch main entrance door		•	•
Amber patio light	•	•	•
13,500-BTU roof-mounted A/C	•	•	•
15,000-BTU roof-mounted A/C		•	•
Clamp-ringed, safety-glass windows with automotive gasket seals	•	•	•
Radial tires with galvanized steel, impact-resistant wheel wells	•	•	•
Aluminum rims			•
E-Z Lube® axles			•
Radius-cornered entrance and baggage doors	•	•	•
Double-wide corner mold extrusions	•	•	•
Aerodynamic front profile	•	•	•
Front window with integrated rock guard	•		• (select models)
30-amp service	•	•	•
50-amp service with second A/C prep (select models)			•
20-pound propane bottle(s)	• (1)	• (2)	
30-pound propane bottles with cover			•
Exterior speakers	•	•	•
Spare tire	•	•	•
Power awning	•	•	• (with LED light)
Front diamond plate	•	•	•
Stabilizer jacks with sand pads	• (2)	• (4)	• (4)

Jay Flight SLX (7-foot)  
Jay Flight SLX (8-foot)  
Jay Flight

Electric stabilizer jacks (4)			•
Outside kitchen (standard in 28RBDS, 29BHDS, 32BHDS, 32IBTS, 32TSBH and 34FKDS; optional in 29QBS and 31QBDS)			•
Outside shower			•
G20 dark-tint windows	•	•	•
Utility lighting system			•
Solar prep			•
Power tongue jack			•
Roof ladder			•
Cargo accessory receiver (select models)			•
Chil N' Stor outside baggage compartment with refrigerator (select models)			•
Patio door (29RKS, 33RLDS, 34FKDS, 34RSBS)			•
Bumper-mount grill			•

## Interior Equipment

81-inch ceiling height		•	•
Screwed-and-glued cabinetry	•	•	•
Wardrobe/pantry storage	•	•	•
Coat hook by entry door (select models)			•
Ball-bearing drawer guides throughout, 75-pound capacity with full extension	•	•	•
Laminate countertops with T-mold edging	•	•	•
Acrylic sink	•		
Large 60/40 acrylic kitchen sink with high-rise faucet		•	•
2-burner range	•		
3-burner range		•	
3-burner range with 9,000-BTU SuperBurner™ and piezo igniter			•
3-cubic-foot refrigerator with temperature controls	•		
6-cubic-foot Norcold® refrigerator with temperature controls		•	
8-cubic-foot refrigerator (18-cubic-foot residential refrigerator in 38BHDS and 38FDDS)			•
Microwave	•	•	•
Oven		•	•
Decorative dinette and slideout room lighting (SuperSlide models)			•
Brushed nickel faucets			•
Range hood	•	•	•
Vented kitchen window			•



Jay Flight SLX (7-foot)  
 Jay Flight SLX (8-foot)  
 Jay Flight

Interior Equipment	Jay Flight SLX (7-foot)	Jay Flight SLX (8-foot)	Jay Flight
Hidden-switch command/charging center			•
Free-standing table with 4 chairs (select models)			•
Dinette with folding bunk			• (32IBTS)
High-efficiency Atwood furnace	•	•	•
Wall-mounted 8,000-BTU A/C	•		
Jayco-made window treatments	•	•	•
Indoor/outdoor dinette table (select models)	•		
Backup/security camera prep			•
Premium multimedia sound system with MP3/iPod® input jacks	•	•	
Premium multimedia sound system with AM/FM/CD/DVD player with Bluetooth, HDMI and MP3 hookup			•
LED TV (28-inch, 32-inch or 39-inch, depending on model)			•
12V/dual USB charging port in bedroom			•
Plywood bed platforms	•	•	•
J-Steel™ jackknife sofa			•
Vinyl flooring	•	•	•
Shaw® residential-grade carpet			•
Linoleum in living area (select models)			•
Vented windows in the slideout room end walls (SuperSlide models)			•
Marine toilet with foot flush	•	•	•
Tub surround		•	•
Glass shower door (select models)			•
Shower curtain with curved shower track (select models)	•	•	•
Wood-trimmed mirror in bathroom	•	•	
Bathroom skylight	•	•	•
Bathroom power fan			•
Residential-height master bed			•
Queen Denver Mattress	• (select models)	•	•
King Denver Mattress (34FKDS, 34RSBS, 38FDDS, 38BHDS)			•
Queen Denver Mattress with bunk			• (19RD)
Main bed struts			•
Under-bed storage on main/queen beds	•	•	•
300-pound-rated bunk beds (select models)	•	•	•
600-pound-rated bunk beds (double bunks)		•	•
Second A/C in bedroom			•
Privacy curtains in bunk areas (select models)		•	•

Jay Flight SLX (7-foot)  
 Jay Flight SLX (8-foot)  
 Jay Flight

Vented bunk windows (select models)			•
4-inch Denver Mattress bunk mats (select models)	•	•	•
Wooden bedroom doors (select models)			•
Bedspread	• (185RB and 195RB)	•	•
Hide-a-bed sofa with Denver Mattress Sleep System (select models)			•
Pleated window shades	•	•	
Water heater bypass	•	•	•
6-gallon gas water heater	•		
6-gallon gas DSI water heater		•	
6-gallon gas/electric DSI water heater (10-gallon in 38BHDS, 38FDDS)			•
Cable/satellite TV hookup			•
Digital TV antenna			•

Optional      Customer Value Package

**Elite Package**

- Large entry door grab handle
- MOR/ryde CRE3000 suspension
- Multifunctional digital remote
- Skylight with shade
- Upgraded faucet with pullout sprayer and sink covers
- Raised-panel, hardwood upper cabinet doors in kitchen and dining area
- Black tank flush
- 80-gallon fresh water capacity (2 tanks)
- Rear ladder
- Refrigerator door inserts (select models)
- Hardwood drawer fronts
- Porcelain toilet

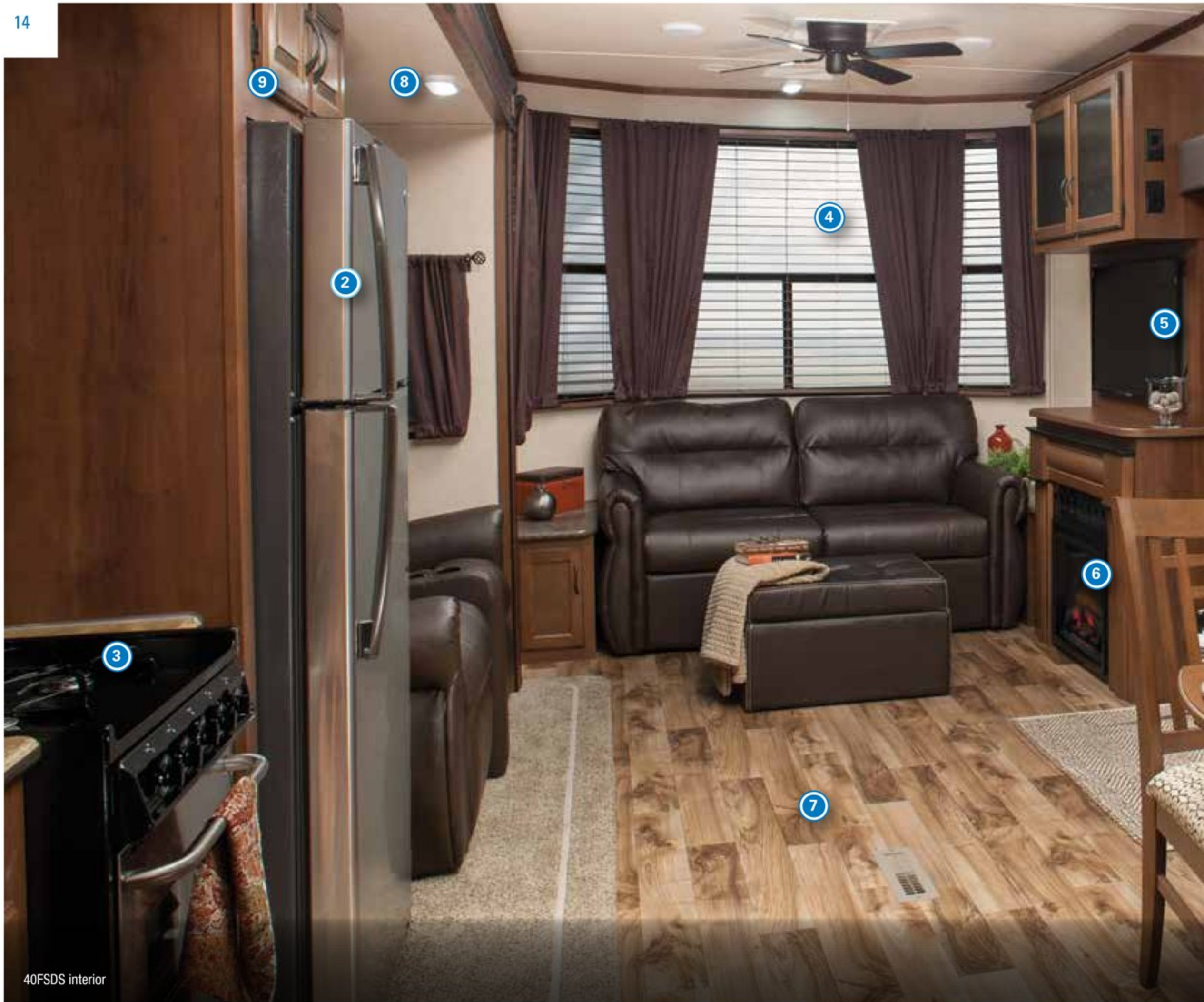
See back cover for Jay Flight interior décor options.



**CAMPING APPROVED:**

**Real-world tested, ready for fun**

From our camping families to yours—Jay Flight is designed for maximum fun. In fact, our crew tests each Jay Flight floorplan with loads of real-world camping supplies—279 pounds of everything you’d need for a Jay Flight adventure. From cereal boxes to grill skewers, we make sure there’s a place—and space—for it all.



40FSDS interior



40BHTS interior



40BHTS bunk room

## MAIN INTERIOR KEY:

1. Wood-look blinds
2. Residential refrigerator
3. Free-standing range
4. Large panoramic windows
5. 40-inch TV
6. Fireplace
7. Wood-look vinyl flooring
8. Interior LED lighting
9. Raised-panel, hardwood doors with mortise-and-tenon joints



## JAY FLIGHT BUNGALOW SETLE IN AND STAY AWAY

Set up camp—in style—with the 2016 Jay Flight Bungalow. A 96-inch interior height and a 102-inch wide-body construction mean there's plenty of space to stretch. And with standard residential features including an 18-cubic-foot refrigerator with ice maker, ceiling fan and 60-inch sliding patio door, it won't take long to feel right at home.



## POPULAR JAY FLIGHT BUNGALOW OPTIONS



Fiberglass sidewalls



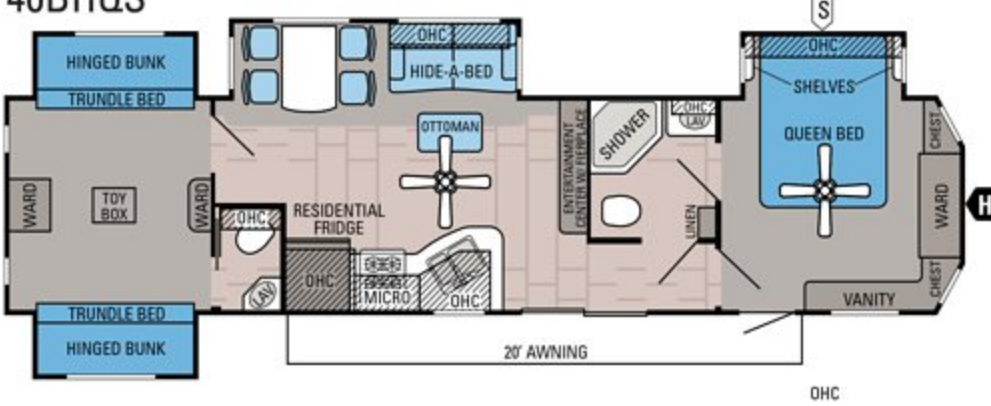
Theater seating



Power awning with LED light

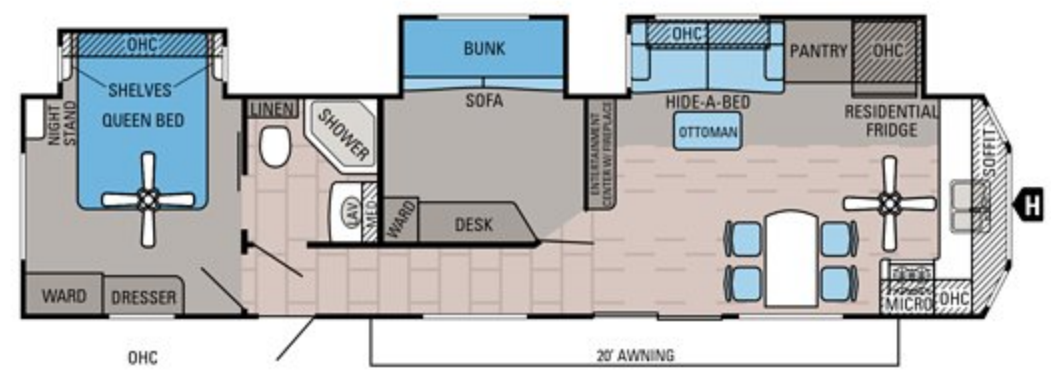
## JAY FLIGHT BUNGALOW FLOORPLANS

### 40BHQS



### JAY FLIGHT BUNGALOW | 40BHQS OPTIONS: A, B, C, D

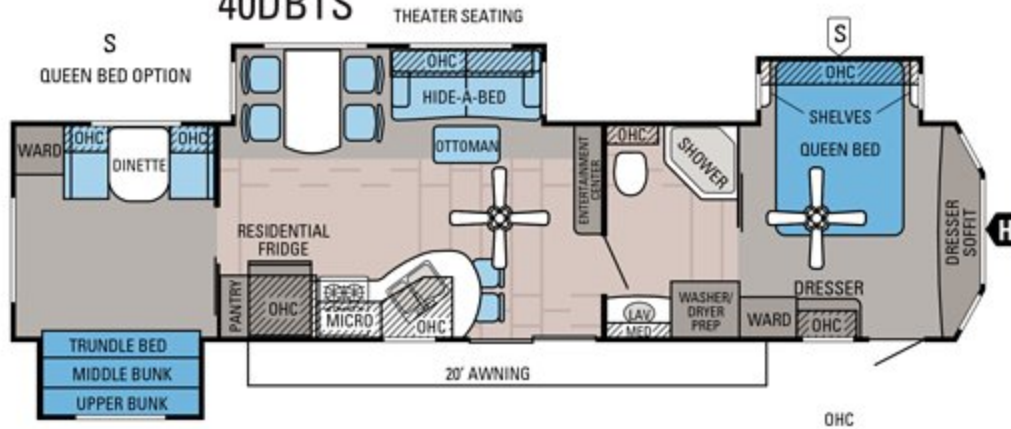
Ext. Length: **TBD** Ext. Height: **TBD** Unloaded Weight (lbs.): **TBD** Sleeps: **6-8**



### JAY FLIGHT BUNGALOW | 40BHQS OPTIONS: C, D

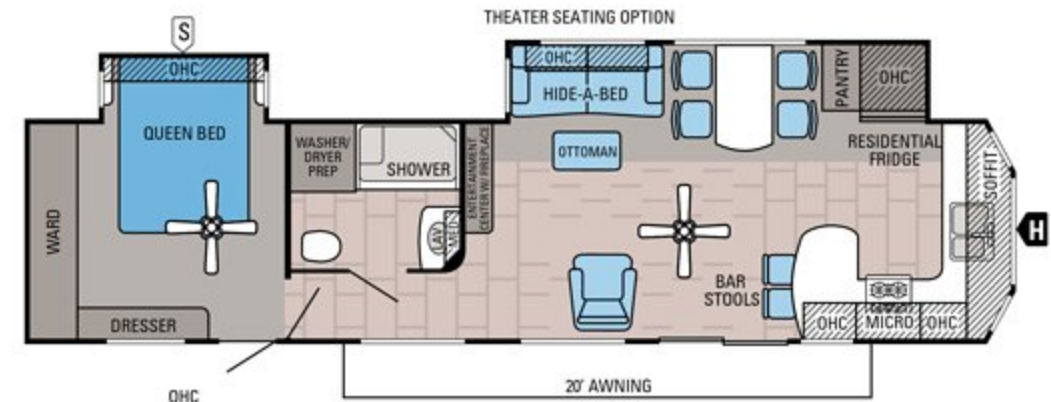
Ext. Length: **TBD** Ext. Height: **TBD** Unloaded Weight (lbs.): **TBD** Sleeps: **4-6**

### 40DBTS



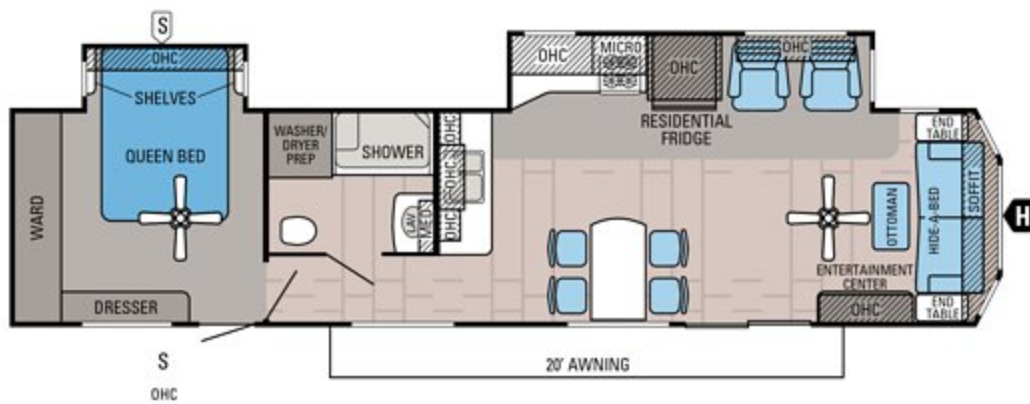
### JAY FLIGHT BUNGALOW | 40DBTS OPTIONS: C, D, E

Ext. Length: **TBD** Ext. Height: **TBD** Unloaded Weight (lbs.): **TBD** Sleeps: **4-8**



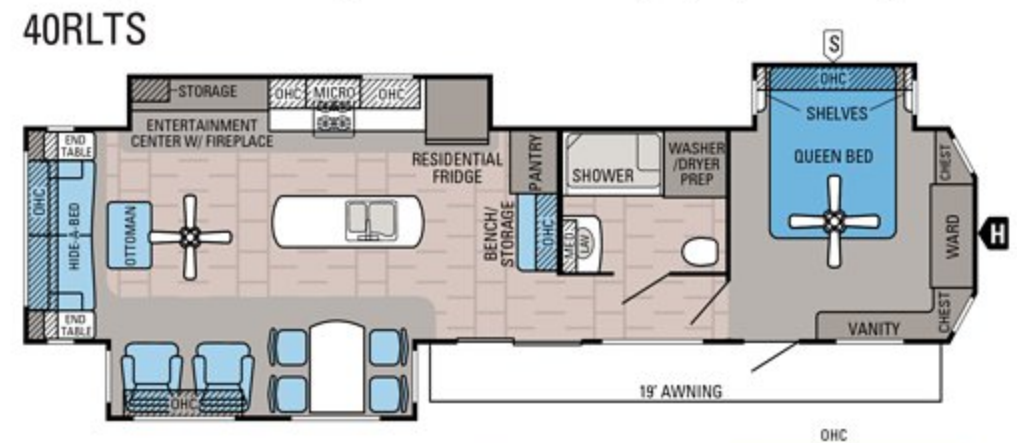
### JAY FLIGHT BUNGALOW | 40DBTS OPTIONS: C, D

Ext. Length: **TBD** Ext. Height: **TBD** Unloaded Weight (lbs.): **TBD** Sleeps: **2-4**



### JAY FLIGHT BUNGALOW | 40FKDS OPTIONS: C, D

Ext. Length: **TBD** Ext. Height: **TBD** Unloaded Weight (lbs.): **TBD** Sleeps: **4**

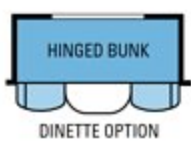


### JAY FLIGHT BUNGALOW | 40RLTS OPTIONS: C, D

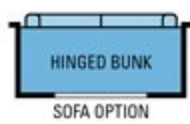
Ext. Length: **40' 2"** Ext. Height: **152"** Unloaded Weight (lbs.): **10,840** Sleeps: **4**

### OPTIONS:

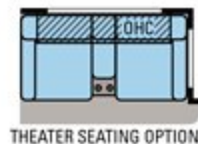
#### OPTION A



#### OPTION B



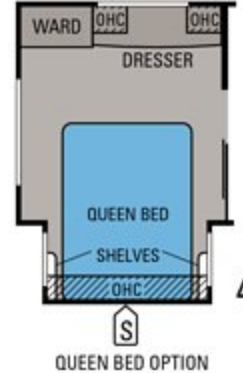
#### OPTION C



#### OPTION D



#### OPTION E



## JAY FLIGHT BUNGALOW SPECIFICATIONS

MODELS	DIMENSIONS				UNLOADED VEHICLE WEIGHT	WEIGHT (LBS.)			TANKS (GALS.)		
	EXTERIOR LENGTH	EXTERIOR WIDTH	EXTERIOR HEIGHT WITH A/C	INTERIOR HEIGHT		DRY HITCH WEIGHT	GROSS VEHICLE WEIGHT RATING	CARGO CARRYING CAPACITY	FRESH WATER CAPACITY (INCLUDES WATER HEATER)	GREY WASTE WATER CAPACITY	BLACK WASTE WATER CAPACITY
40BHQS	TBD	102"	TBD	96"	TBD	TBD	TBD	TBD	38	78	78
40BHQS	TBD	102"	TBD	96"	TBD	TBD	TBD	TBD	48	78	39
40DBTS	TBD	102"	TBD	96"	TBD	TBD	TBD	TBD	38	78	39
40FKDS	TBD	102"	TBD	96"	TBD	TBD	TBD	TBD	TBD	TBD	TBD
40FSDS	TBD	102"	TBD	96"	TBD	TBD	TBD	TBD	48	39	39
40RLTS	40' 2"	102"	152"	96"	10,840	1,570	13,000	2,160	48	32.5	39



## STANDARD EXTERIOR EQUIPMENT

102-inch wide-body construction  
 Magnum Truss Roof System with one-piece seamless DiFlex II material  
 5/8-inch tongue-and-groove plywood floor decking  
 12-inch I-class cambered structural steel I-beams  
 2-sided reflective foil in flush-floor slideout floors  
 Electric-powered slideouts with enclosed gear system  
 Radial tires with galvanized steel, impact-resistant wheel wells  
 E-Z lube axles  
 60-inch residential-style sliding patio door with Low-E thermal-pane glass  
 Exterior marine-grade speakers (2)  
 Manual patio awning  
 G20 dark-tint windows  
 Atrium-style front wall with integrated lights  
 Utility lighting system  
 Detachable hitch  
 Outside shower  
 Black tank flush sprayer  
 Solar prep

## STANDARD INTERIOR EQUIPMENT

96-inch interior height  
 120V ceiling fan in living room and bedroom  
 Screwed-and-glued Northridge Caramel cabinetry  
 Ball-bearing drawer guides, 75-pound capacity, full extension  
 18-cubic-foot, residential-style, 120V refrigerator with ice maker  
 20-inch free-standing 4-burner gas range with oven  
 Large 60/40 deep-bowl acrylic kitchen sink with residential pullout sprayer

16-gallon effective (10-gallon tank) gas/electric DSI water heater  
 Auto-ignition furnace  
 DiamondFlor® hardwood-look vinyl flooring  
 Residential Shaw® carpet with padding  
 Vertical patio door blinds  
 Wood-look mini blinds in living room  
 Residential-style window treatments  
 Night shades in bedroom  
 Hide-a-bed with tri-fold Denver Mattress  
 Electric fireplace with thermostat controls  
 Cable/satellite prep  
 Hidden-switch command/charging center  
 Dual USB charging port in bedroom  
 Medicine cabinet with mirror  
 Porcelain toilet with foot flush  
 Denver Mattress pillow-top mattress  
 Bedroom stereo speakers (2)  
 4-inch, high-density foam dinette cushions (40DBTS)  
 Plywood bed, dinette and bunk bases with 300-pound-rated bunks and Denver Mattress mats  
 Central vacuum with push-button retract for easy hose storage  
 Electrical outlets in master bedroom on each side of the bed  
 Vented slideout end windows in living room and bedroom slides (most models)  
 6-panel-style bathroom and master bedroom doors  
 Residential-height master bed  
 82-inch slideout height  
 84-inch-tall interior doorways  
 Interior LED lighting  
 Recessed LED lights in kitchen area  
 Living room throw pillows  
 Upgraded reading lights in master bedroom  
 Upgraded living room furniture style with all new décor

Decorative dinette ceiling light  
 Reed-glass insert on select cabinets  
 Crown molding on kitchen overhead cabinets  
 Deluxe bar stools (select models)  
 Backup/security camera prep

## CUSTOMER VALUE PACKAGE

15,000-BTU central A/C  
 30-pound propane bottles with new cover  
 Bath skylight  
 CD/DVD with MP3 input and Bluetooth  
 Manual stabilizer jacks  
 30-inch microwave  
 Power vent in bathroom  
 Quilted bedspread  
 Sink covers (2)  
 Tub surround  
 Water heater bypass

## OPTIONS

Adjustable-pitch electric patio awning with LED light  
 Slideout awnings  
 Thermal-pane tinted safety-glass windows  
 Fiberglass sidewalls  
 King bed  
 Second A/C in bedroom  
 Thermal Package  
 Solid-surface kitchen countertops  
 Stainless steel kitchen appliances  
 Desk chair (40BHTS)

# JAY HIGHER BUNKALOW INTERIOR DECOR

## ALMOND



## HAVANA



## JAVA



## MEADOW



# LET'S JAYCO—AND LEAVE OUR WORRIES BEHIND.

We know that your family fun rides on our commitment to quality. So we go the extra mile to make products that last—and stand behind them longer than anyone in the business.



## THE JAYCO DIFFERENCE

When you go with Jayco, you get one of the industry's strongest frames and rock-solid construction.

**1. Hand-tucked and glued fiberglass insulation** increases the insulation value near the 2-inch x 2-inch wooden studs; competitors use a blanket-insulation technique

**2. An optional fiberglass package** offers a smooth, sleek look; front walls are vacuum-bonded for added durability, while the sidewalls and rear walls are pinch rolled, for an affordable combination

**3. Magnum Truss Roof System** withstands 4,500 pounds—50 percent more than other roofs; by using  $\frac{3}{8}$ -inch plywood decking (n/a on Jay Flight SLX) at every seam, we offer higher durability than competitors' stapled construction; a one-piece, sidewall-wrapped DiFlex II material provides the ultimate in leak protection

**4. Durable floors** feature  $\frac{5}{8}$ -inch tongue-and-groove plywood (n/a on Jay Flight SLX) on 2-inch x 3-inch wooden joists, wrapped with a protective moisture barrier to keep the elements at bay

**5. Galvanized steel wheel wells**, not found on competing models, reduce heat loss and prevent damage in case of road debris

## JAYCO'S ROOF **VS** OTHER ROOFS

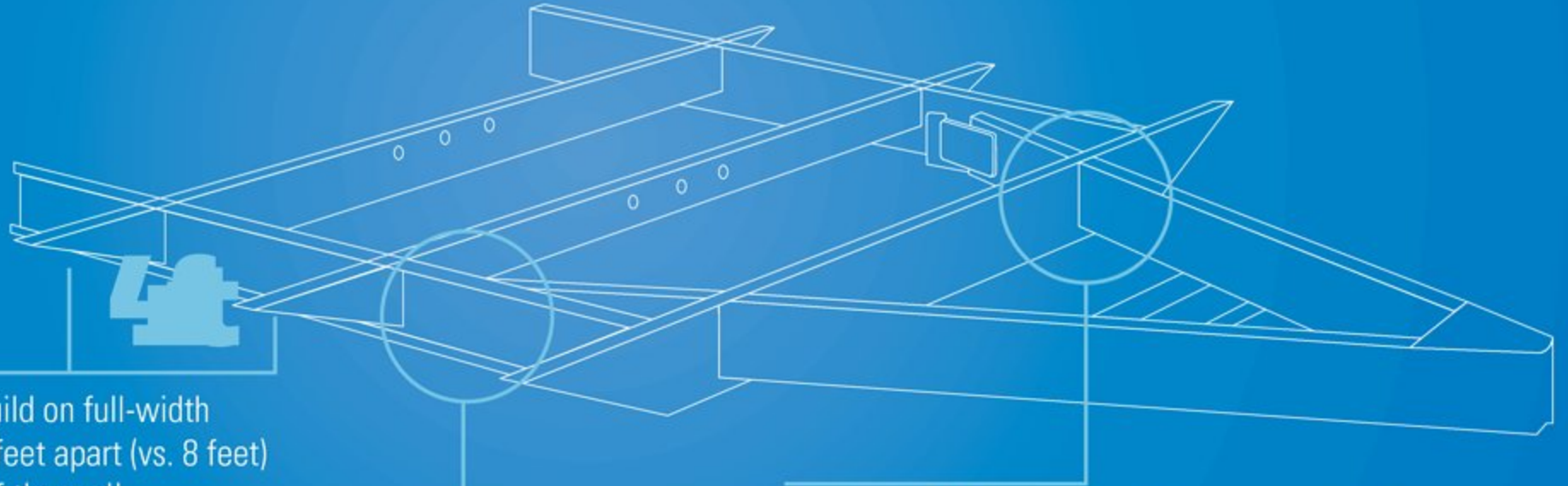


4,500 POUNDS ON A JAYCO ROOF VS. OTHER ROOFS

THE MAGNUM TRUSS ROOF SYSTEM  
**50 percent stronger**

# WE START WITH ONE OF THE INDUSTRY'S **strongest** foundations

Many competitors modify or weld stock frames, which can weaken the integrity of your foundation. Jayco's custom-manufactured frames offer higher strength and durability.



**Full-width outriggers:** We build on full-width outriggers that are spaced 4-6 feet apart (vs. 8 feet) to better support the weight of the wall.

**I-class cambered structural steel I-beams:** Jayco uses a unique molded, one-piece design to prevent the unit from twisting; competing three-piece I-beams can warp over time at the welded seams.

**Integrated A-frame:** The A-frame runs through the main frame, preventing the hitch from buckling—a common issue in competing tack-welded designs; seasonal travel trailers have a detachable hitch in lieu of an integrated A-frame.

Learn more at [StrongFoundation.Jayco.com](http://StrongFoundation.Jayco.com)



## JAY FLIGHT BUNGALOW EXCLUSIVE

**6. A unique residential-style atrium profile** creates a more home-like feel; vented windows and a 60-inch patio door maximize your comfort

**7. A detachable hitch** lets you remove the hitch during long-term stays

# JAYCO INTERIOR DECOR

## CASHEW



## COFFEE



## MINERAL



## SHADOW



Generations of family fun.

### Meet your Jayco Dealer



We work hard—so you can play hard. From finding the perfect Jayco for your family to providing flexible financing options and full-service support, we're here to help.

### Follow Jayco



Jayco, Inc., P.O. Box 460, Middlebury, IN 46540, [www.jayco.com](http://www.jayco.com) See dealer for further information and prices. All information in this brochure is the latest available at the time of publication approval. Jayco reserves the right to make changes and to discontinue models without notice or obligation. Photos in this brochure may show optional equipment and props for photography purposes. RVs built for sale in Canada may differ to conform to Canadian codes. ©2015 Jayco, Inc. 0615-80K Printed in U.S.A.

**2**  
YEAR  
WARRANTY

**FREE**

ROADSIDE  
ASSISTANCE

Travel with confidence, with our industry-leading, bumper-to-hitch limited warranty and a year's access to Coach-Net™—the country's largest RV emergency road service.

For a copy of our 2-year limited warranty with full terms and conditions, please contact your local Jayco dealer.

**eco** advantage™

**Jayco's long-term commitment to generations of family fun**

After four years of increased efforts to eliminate waste, conserve energy and increase recycling, we've come a long way in building RVs that are not only better for your family—but also better for the planet.

**Learn more at [Jayco.com/EcoAdvantage](http://Jayco.com/EcoAdvantage)**