



RECREATIONAL  
VEHICLES

# ESCAPE

ULTRA LIGHTWEIGHT TRAVEL TRAILERS



The ultimate adventurer's RV, Escape is built for campers who want to have some fun. Starting at just over 18' feet and 3,000 pounds, Escape is ready for your next getaway!



**DICOR TUFFLEX PVC**  
roof membrane  
w/lifetime warranty  
and now with 3/8"  
walkable roof



Optional **OFF-GRID/OFF-ROAD PACKAGE** allows complete boondocking capabilities, and includes a 100W roof-mounted solar panel, 1,000W inverter with dedicated 110V outlets, solar controller, tongue-mounted bike rack, griddle, aluminum wheels with mud tires, extra ground clearance, electronically-controlled heated holding tanks, and double entry step.



E181MK | Ashwood décor

## KEY FEATURES:

- 3/8" Fully walkable roof
- Automotive style front window
- 13.5 BTU low pro roof-mounted A/C
- Dicor Tufflex PVC roof membrane w/lifetime warranty
- Off-grid/off-road package (optional)

Travel Trailers	E17 HATCH	E18 HATCH	E20 HATCH	E181MK	E181RB	E191BHK	E201BH	E201TB	E211RB	E231BH
UVW (Unloaded Vehicle Weight)*	3,320	3,490	3,560	3,590	3,500	3,610	3,780	3,700	4,000	4,170
Dry Hitch Weight*	550	560	540	520	560	510	520	500	440	510
Dry Axle Weight*	2,770	2,930	3,020	3,070	2,940	3,100	3,260	3,200	3,560	3,660
CCC (Cargo Carrying Capacity)	680	730	840	670	500	635	620	700	1,000	830
GVWR	4,000	4,220	4,400	4,260	4,000	4,245	4,400	4,400	5,000	5,000
Interior Height	78"	78"	78"	78"	78"	78"	78"	78"	78"	78"
Exterior Height w/o A/C (unless noted)**	112"	112"	112"	112"	112"	112"	112"	112"	118"***	118"***
Exterior Width	90"	90"	90"	90"	90"	90"	90"	90"	90"	90"
Exterior Length***	22'	22'	23' 10"	22' 1"	22' 1"	22' 1"	23' 9"	23' 9"	25' 2"	27' 3"
Refrigerator (cu. feet)	8	8	8	8	8	8	8	8	8	8
Water Heater Cap. (gal. LP w/DSI)	6	6	6	6	6	6	6	6	6	6
Fresh Water Cap. (gal.)	20	20	20	20	20	20	20	20	20	20
Waste Water Cap. (gal.)	30	30	30	30	26	30	30	30	30	30
Gray Water Cap. (gal.)	30	30	30	28	28	28	28	30	30	30
LP Gas Cap. (lbs.)	20	20	20	20	20	20	20	20	20	20
Furnace BTUs (1,000s)	20	20	20	20	20	20	20	20	20	20
Tire Size	15"	15"	15"	15"	15"	15"	15"	15"	15"	15"
Awning	14'	14'	14'	14'	11'	14'	14'	14'	14'	14'

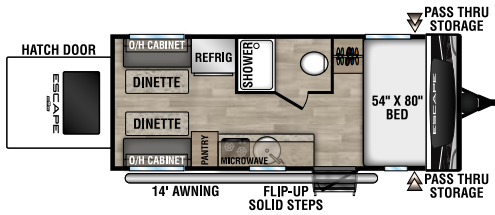
\*This weight reflects the rolling average unit weight for each model. Your trailer weight will vary according to optional equipment. \*\*This exterior height is with A/C. \*\*\* Exterior length is measured from rear of bumper to leading edge of coupler.

# 2023 ESCAPE TRAVEL TRAILERS

## STANDARDS

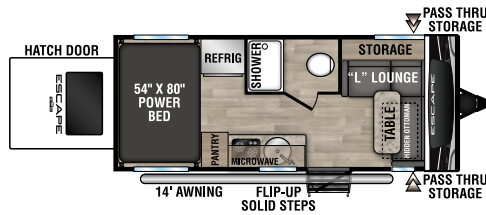
- Tinted Windows
- Diamond Plate Rock Guard
- Rear Bumper w/Sewer Hose Storage
- Self-Adjust Electric Brakes
- Radial Tires
- 20# LP Bottle
- Cable Hookup
- City Water Fill
- Digital TV Antenna
- 12V Converter w/Charger
- 6 GAL LP DSI Water Heater
- Monitor Panel
- Linoleum Throughout
- LED Interior Lighting
- Automotive Front Windshield
- 2-Burner Cooktop
- Microwave
- 8 CU FT 12V Refrigerator
- Euro Style Solid Cabinet Door

*NOTE: Options and packages can be found on the website*



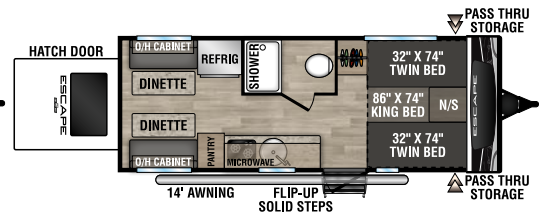
### E17 HATCH

UVW - 3,320 | Exterior Length - 22' | Sleeps - 4



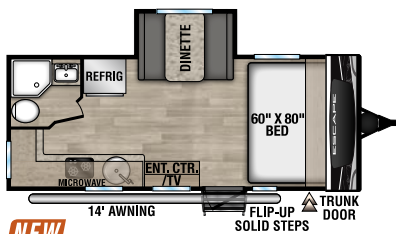
### E18 HATCH

UVW - 3,490 | Exterior Length - 22' | Sleeps - 4



### E20 HATCH

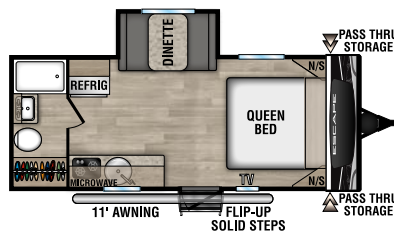
UVW - 3,560 | Exterior Length - 23'10" | Sleeps - 4



**NEW**

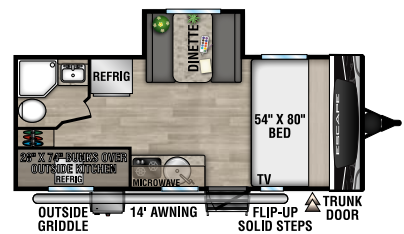
### E181MK

UVW - 3,590 | Exterior Length - 22'1" | Sleeps - 4



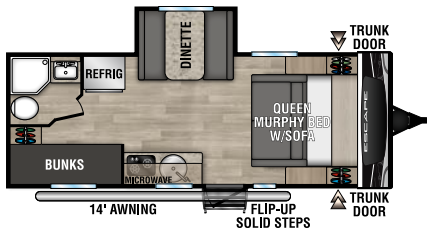
### E181RB

UVW - 3,500 | Exterior Length - 22'1" | Sleeps - 3



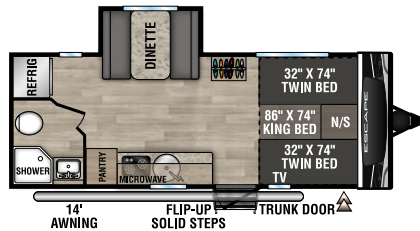
### E191BHK

UVW - 3,610 | Exterior Length - 22'1" | Sleeps - 5



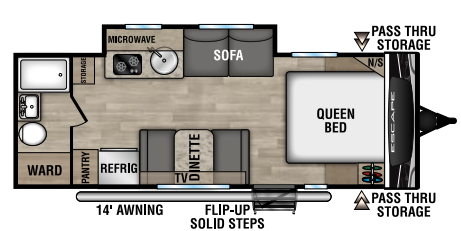
### E201BH

UVW - 3,780 | Exterior Length - 23'9" | Sleeps - 5



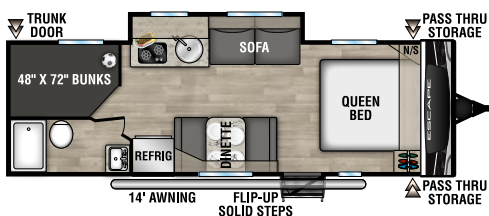
### E201TB

UVW - 3,700 | Exterior Length - 23'9" | Sleeps - 3



### E211RB

UVW - 4,000 | Exterior Length - 25'2" | Sleeps - 4



E231BH UVW - 4,170 | Exterior Length - 27'3" | Sleeps - 8



Dealer:



985 N 900 W SHIPSEWANA, IN 46565

E: KZ@KZ-RV.COM

WWW.KZ-RV.COM

Due to continual research and advances, manufacturer reserves the right to change specifications, design, price, and equipment without notice, and assumes no responsibility for any error in this literature. Some items shown are not included as standard or optional equipment.

©2022KZ | 00/00/22 | 00M