



RECREATIONAL  
VEHICLES

# DURANGO HALF-TON

LIGHTWEIGHT LUXURY FIFTH WHEELS



The KZ **True 2 Warranty** is a **2-year hitch-to-bumper limited warranty** that's true to its name. The gold standard in RV protection, True 2 provides double the coverage of the industry norm. Plus, our warranty is backed by the craftsmanship and quality we're known for, so you can Go. Camp. Live. Wherever your adventure takes you, know that you're covered in your KZ.



D290RLT | Barista décor

# 2021 DURANGO HALF-TON FIFTH WHEELS

D275BHS | Barista décor



## 2021 DÉCOR



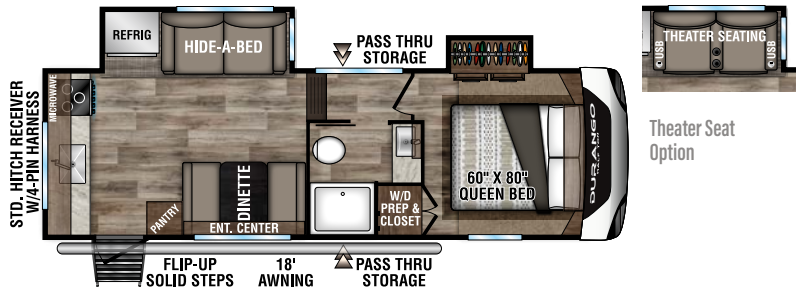
Fifth Wheels	D230RKD	D250RED	D256RKT	D259RLD	D275BHS	D283RLT	D286BHD	D290RLT	D291BHT	D294MBQ
UVW (Unloaded Vehicle Weight)*	7,250	7,320	8,960	7,420	7,870	8,700	8,540	8,940	9,650	10,190
Dry Hitch Weight*	1,310	1,430	1,420	1,190	1,490	1,520	1,570	1,460	1,520	1,650
Dry Axle Weight*	5,940	5,890	7,540	6,230	6,380	7,180	6,970	7,480	8,130	8,540
CCC (Cargo Carrying Capacity)	1,750	1,680	1,540	1,580	2,630	1,800	1,960	1,560	2,100	1,805
GVWR	9,000	9,000	10,500	9,000	10,500	10,500	10,500	10,500	11,750	11,995
Exterior Height w/ A/C	12' 1"	12' 1"	12' 1"	12' 1"	12' 1"	12' 1"	12' 0"	12' 1"	12' 1"	12' 1"
Exterior Width	96"	96"	96"	96"	96"	96"	96"	96"	96"	96"
Exterior Length**	26' 9"	29' 1"	33' 9"	29' 6"	32' 1"	32' 11"	33' 7"	34' 5"	37' 5"	38' 2"
Refrigerator (cu. feet)	8	8	8	8	8	8	8	8	8	8
Water Heater Cap. (gal. G/E w/DSI)	6	6	6	6	6	6	6	6	6	6
Fresh Water Cap. (gal.) [Including Water Heater Capacity]	55	55	55	55	55	55	55	55	55	55
Waste Water Cap. (gal.)	53	53	53	53	53	53	53	53	106	53
Gray Water Cap. (gal.)	93	93	93	53	53	53	93	53	53	53
1/2 Bath Cap. (gal.)	N/A	N/A	N/A	N/A	N/A	N/A	N/A	N/A	53	N/A
LP Gas Cap. (lbs.)	60	60	60	60	60	60	60	60	60	60
Furnace BTUs (1,000s)	35	35	35	35	35	35	35	35	35	35
Tire Size	16"	16"	16"	16"	16"	16"	16"	16"	16"	16"
Awning	18'	20'	14'	20'	18'	13'/10' 6" opt.	(2) 14'	19'	13'/11' opt.	17'/11' opt.

\*This weight reflects the rolling average unit weight for each model. Your trailer weight will vary according to optional equipment.

\*\*Exterior length is measured from rear of bumper to center of coupler.



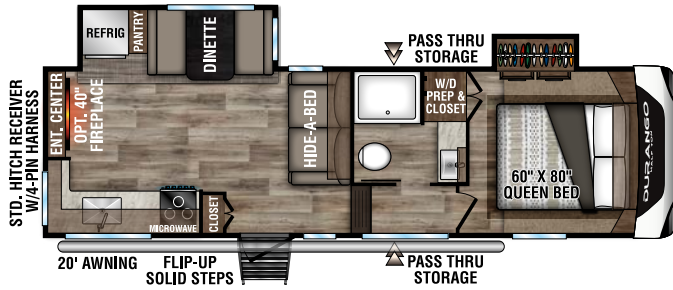
# 2021 DURANGO HALF-TON FIFTH WHEELS



**NEW**

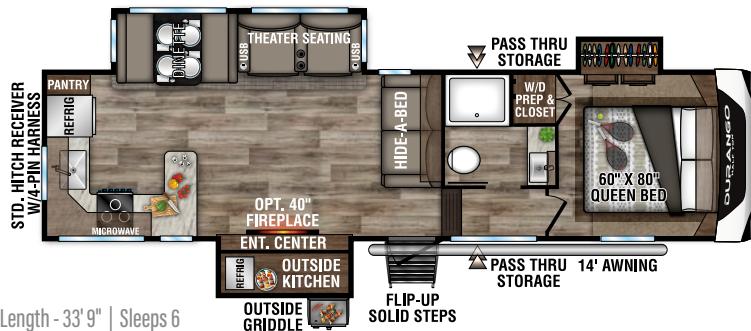
**D230RKD**

UVW - 7,250 | Exterior Length - 26' 9" | Sleeps 6



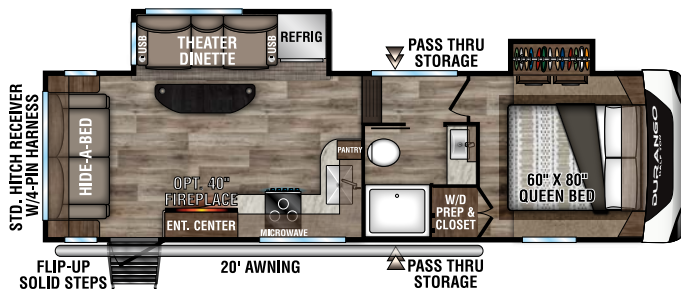
**D250RED**

UVW - 7,320 | Exterior Length - 29' 1" | Sleeps 6



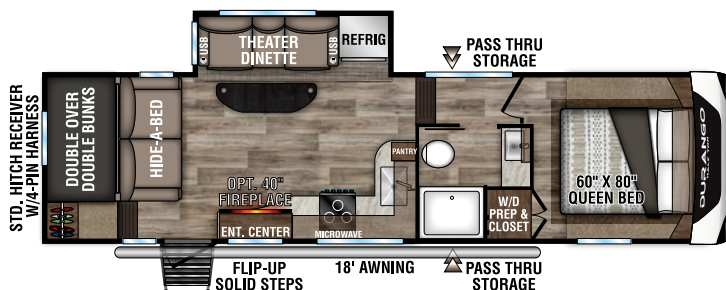
**D256RKT**

UVW - 8,960 | Exterior Length - 33' 9" | Sleeps 6



**D259RLD**

UVW - 7,420 | Exterior Length - 29' 6" | Sleeps 5

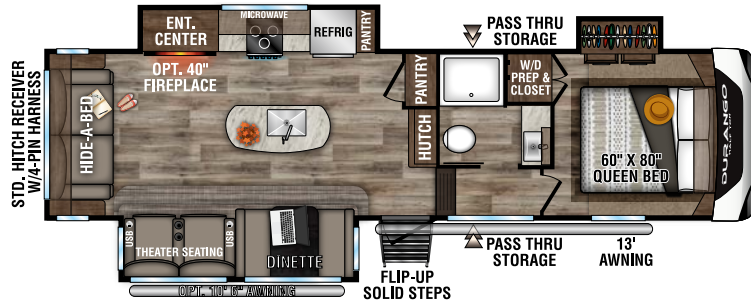


**NEW**

**D275BHS**

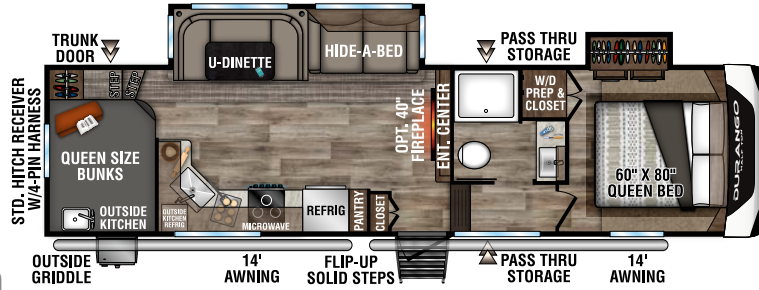
UVW - 7,870 | Exterior Length - 32' 1" | Sleeps 9

# 2021 DURANGO HALF-TON FIFTH WHEELS



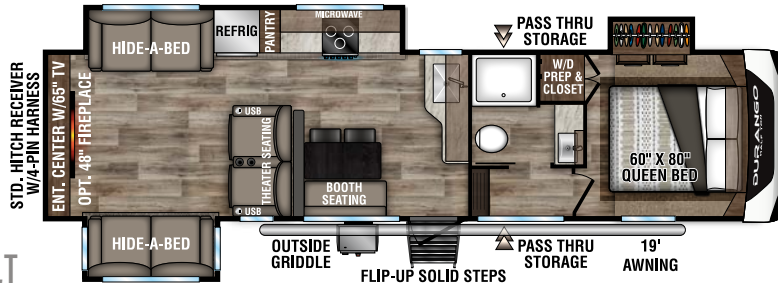
## D283RLT

UVW - 8,700 | Exterior Length - 32' 11" | Sleeps 6



## D286BHD

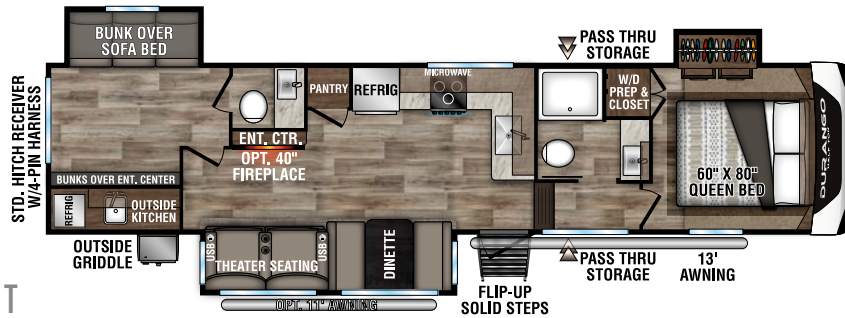
UVW - 8,540 | Exterior Length - 33' 7" | Sleeps 10



**NEW**

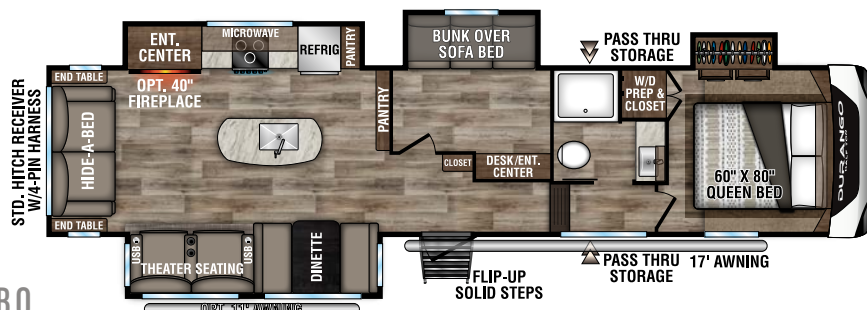
## D290RLT

UVW - 8,940 | Exterior Length - 34' 5" | Sleeps 6



## D291BHT

UVW - 9,650 | Exterior Length - 37' 5" | Sleeps 9



## D294MBQ

UVW - 10,190 | Exterior Length - 38' 2" | Sleeps 8



# 2021 DURANGO HALF-TON FEATURES



Drop-in **COOKTOP** with glass cover and **OVEN**



**WASHER/DRYER PREP** in bedroom is a higher-end feature not normally found in half-ton 5th wheel price points.



**THEATER SEATING** with cupholders, USB plug, heat and massage



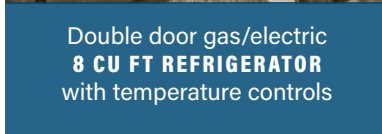
Double door gas/electric **8 CU FT REFRIGERATOR** with temperature controls



Deep under-mount **STAINLESS SINK** with cover and residential faucet with spring sprayer



**LED TV & MULTI-MEDIA STEREO** with DVD, Bluetooth and wireless connectivity with **COZY AMBIENCE** from the optional 40-inch wide-view fireplace. (D290RLT shown)



**METAL SLAM LATCHES** on baggage doors are easy to use and keep things safe.



36-inch shower with shelf space and skylight



**REDESIGNED FRONT BEDROOM** setup.



**FLEXIBLE**

**PUNCTURE RESISTANCE**

**REFLECTIVE**

**TUFFLEX ROOFING** by Dicor Products 20-YEAR WARRANTY!



# 2021 DURANGO HALF-TON EXTERIOR FEATURES



Fully-heated, insulated and enclosed underbelly! R-11 sidewalls, R-24 roof and floor.



**BATTERY DISCONNECT** switch is conveniently located.



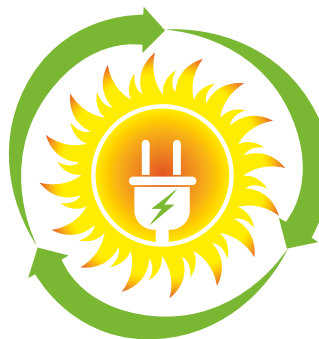
Durango's standard **LITHIUM-READY CHARGING STATION** includes a dual converter, which allows you to choose between lithium or lead batteries with a flip of a switch!



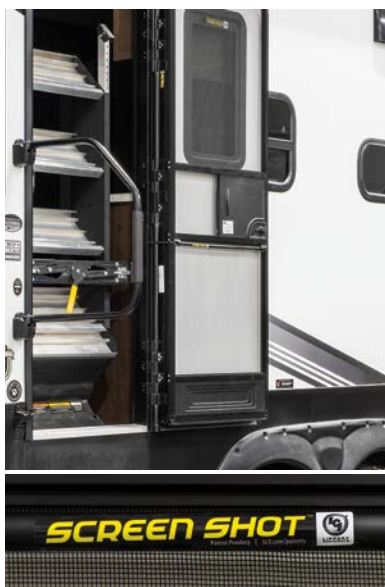
16" 6-lug heavy duty **ALUMINUM WHEELS** with E-range tires



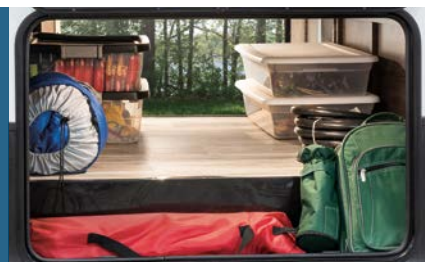
**5/8" TONGUE & GROOVE PLYWOOD**



Harness the power of the sun to run your TV and outlets. Roof-mounted solar prep standard. **OPTIONAL "OFF THE GRID" SOLAR PACKAGE** by Xantrex (220W solar panel, 30A MPPT solar charge controller w/MPPT remote panel, 2,000W true sine wave inverter w/all outlets "hot").



**PASS-THROUGH STORAGE** features motion-lit technology



**STANDARD FLIP-UP ENTRY STEP** provides solid footing, coming and going. Handy friction hinge and screenshot auto-door-close feature.



Optional **4-POINT AUTO-LEVELING** does all the work



Two attic vents are in each RV, providing vital escape routes for unwanted moisture that accumulates during use.

Dealer:



Portions of this brochure were used with the expressed authority of Dexter Axle, but Dexter Axle is not responsible for the accuracy of the information contained herein.



985 N 900 W SHIPSEWANA, IN 46565

E: KZ@KZ-RV.COM

WWW.KZ-RV.COM

Due to continual research and advances, manufacturer reserves the right to change specifications, design, price and equipment without notice, and assumes no responsibility for any error in this literature. Some items shown are not included as standard or optional equipment.

©2020KZ | 11/17/20 | 25M