



RECREATIONAL
VEHICLES

SPORTSMEN SE & LE

TRAVEL TRAILERS & TOY HAULERS



332BHKLE | Gunmetal décor

2021 SPORTSMEN SE TRAVEL TRAILERS

281BHSE | Gunmetal décor



2021 DÉCOR

GUNMETAL

Sportsmen SE Travel Trailers	231FKKSE	240FBSE	251RSSE	260BHSE	261BHKSE	270BHSE	271BHKSE	281BHSE	301BHKSE	301DBSE	312BHKSE
UVW (Unloaded Vehicle Weight)*	5,270	4,510	5,440	4,780	5,810	5,140	5,670	5,870	6,150	6,070	7,080
Dry Hitch Weight*	890	520	790	600	760	740	590	740	890	930	860
Dry Axle Weight*	4,380	3,990	4,650	4,180	5,050	4,400	5,080	5,130	5,260	5,140	6,220
CCC (Cargo Carrying Capacity)	1,730	2,490	1,560	2,220	1,190	1,860	1,330	2,130	1,850	1,930	1,720
GVWR	7,000	7,000	7,000	7,000	7,000	7,000	7,000	8,000	8,000	8,000	8,800
Interior Height	78"	78"	78"	78"	78"	78"	78"	78"	78"	78"	78"
Exterior Height w/ A/C	10' 8"	10' 4"	10' 8"	10' 8"	10' 8"	10' 8"	10' 7"	10' 8"	10' 8"	10' 8"	10' 8"
Exterior Width	96"	96"	96"	96"	96"	96"	96"	96"	96"	96"	96"
Exterior Length**	27' 5"	26' 2"	29' 7"	28' 7"	31' 7"	31' 5"	30' 11"	32' 7"	32' 10"	32' 10"	35' 9"
Refrigerator (cu. feet)	10	10	10	10	10	10	10	10	10	10	10
Water Heater Cap. (gal. G/E w/DSI)	6	6	6	6	6	6	6	6	6	6	6
Fresh Water Cap. (gal.)	45	45	45	45	45	45	45	45	45	45	45
Waste Water Cap. (gal.)	32	32	32	32	32	32	32	32	32	32	32
Gray Water Cap. (gal.)	64	32	32	32	32	32	32	32	32	32	32
LP Gas Cap. (lbs.)	40	40	40	40	40	40	40	40	40	40	40
Furnace BTUs (1,000s)	20	30	30	30	30	30	30	30	30	30	30
Tire Size	14"	14"	14"	14"	14"	14"	14"	15"	15"	15"	15"
Awning	18'	14'	20'	14'	18'	16'	19'	20'	16'	16'	19'

*This weight reflects the rolling average unit weight for each model. Your trailer weight will vary according to optional equipment. ** Exterior length is measured from rear of bumper to leading edge of coupler.

2021 SPORTSMEN LE TRAVEL TRAILERS & TOY HAULERS

301RKLE | Gunmetal décor



2021 DÉCOR

GUNMETAL



KING BED is standard on LE

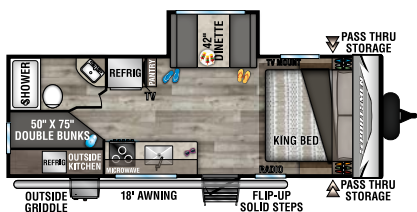
TRAVEL TRAILERS

TOY HAULERS

Sportsmen LE	231BHKLE	241RKLE	251IRLLE	261IRLLE	281BHKLE	301RKLE	303KBLE	312FKLE	332BHKLE	333KBKLE	200THLE	250THLE	270THLE	291THLE
UVW (Unloaded Vehicle Weight)*	5,020	5,450	5,370	5,900	6,390	6,610	7,550	7,410	7,360	8,130	4,520	5,270	5,470	6,340
Dry Hitch Weight*	710	540	730	750	750	890	950	1,050	870	1,280	690	930	1,030	1,170
Dry Axle Weight*	4,310	4,910	4,640	5,150	5,640	5,720	6,600	6,360	6,490	6,850	3,830	4,340	4,440	5,170
CCC (Cargo Carrying Capacity)	980	1,550	1,630	1,100	1,610	1,390	1,250	1,390	1,440	1,865	2,480	3,530	3,330	2,460
GVWR	6,000	7,000	7,000	7,000	8,000	8,000	8,800	8,800	8,800	9,995	7,000	8,800	8,800	8,800
Interior Height	78"	78"	78"	78"	78"	78"	78"	78"	78"	78"	78"	78"	78"	78"
Exterior Height w/ A/C	10' 4"	10' 8"	10' 8"	10' 7"	10' 8"	10' 8"	10' 8"	10' 8"	10' 8"	10' 8"	10' 8"	10' 8"	10' 8"	10' 9"
Exterior Width	96"	96"	96"	96"	96"	96"	96"	96"	96"	96"	96"	96"	96"	96"
Exterior Length**	26' 5"	28' 2"	28' 7"	30' 8"	32' 1"	34' 5"	34' 7"	35' 5"	37' 3"	38'	24' 3"	29' 1"	30' 10"	33' 10"
Refrigerator (cu. feet)	7	7	7	7	7	7	7	7	7	7	7	7	7	7
Water Heater Cap. (gal. G/E w/DSI)	6	6	6	6	6	6	6	6	6	6	6	6	6	6
Fresh Water Cap. (gal.)	45	45	45	45	45	45	45	45	45	45	45	45	45	45
Waste Water Cap. (gal.)	32	32	32	32	32	32	32	32	32	32	32	32	32	32
Gray Water Cap. (gal.)	32	64	32	32	64	64	32	64	32	32	32	32	32	32
LP Gas Cap. (lbs.)	40	40	40	40	40	40	40	40	40	40	40	40	40	40
Furnace BTUs (1,000s)	20	30	30	30	30	30	30	30	30	30	20	20	25	30
Tire Size	14"	14"	14"	14"	15"	15"	15"	15"	15"	15"	14"	15"	15"	15"
Awning	18'	19'	18'	15'	20'	19'	12' w/11' opt.	19'	20'	12' w/11' opt.	16'	18'	20'	20'

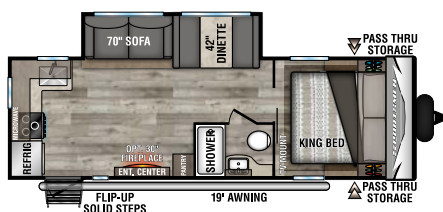
*This weight reflects the rolling average unit weight for each model. Your trailer weight will vary according to optional equipment. ** Exterior length is measured from rear of bumper to leading edge of coupler.

2021 SPORTSMEN LE TRAVEL TRAILERS & TOY HAULERS



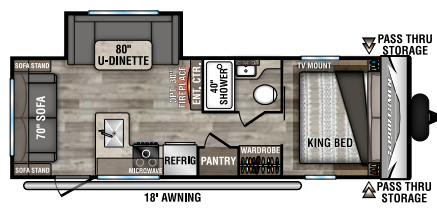
231BHKLE

UVW - 5,020 | Exterior Length - 26' 5" | Sleeps 7



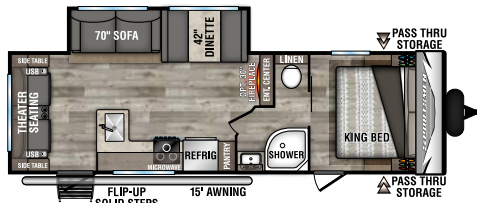
241RKLE

UVW - 5,450 | Exterior Length - 28' 2" | Sleeps 5



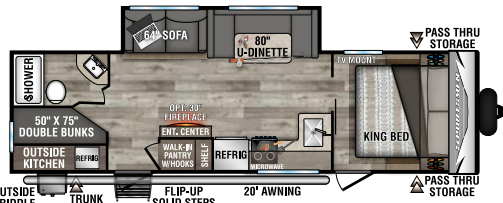
251RLLE

UVW - 5,370 | Exterior Length - 28' 7" | Sleeps 6



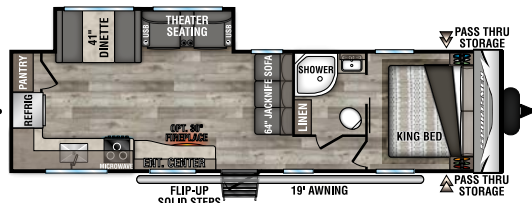
261RLLE

UVW - 5,900 | Exterior Length - 30' 8" | Sleeps 5



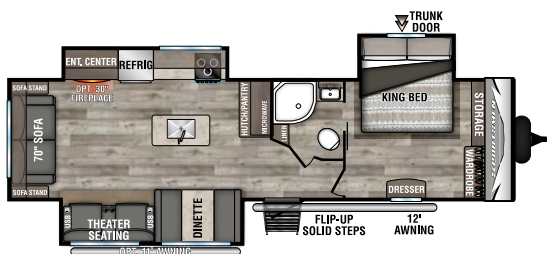
281BHKLE

UVW - 6,390 | Exterior Length - 32' 1" | Sleeps 9

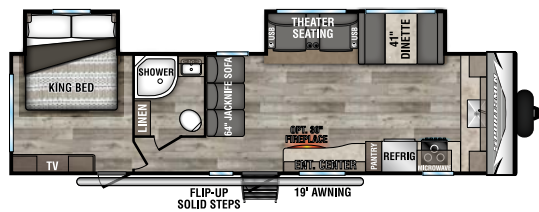


301RKLE **NEW**

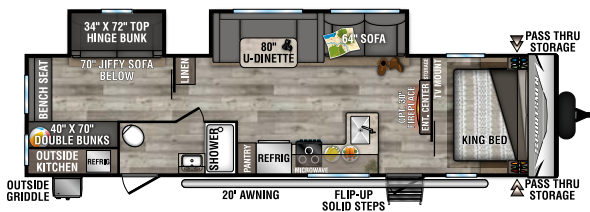
UVW - 6,610 | Exterior Length - 34' 5" | Sleeps 4



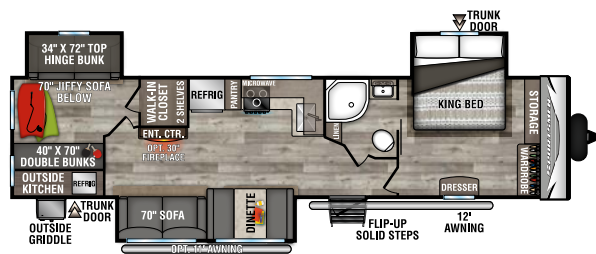
303KBLE UVW - 7,550 | Exterior Length - 34' 7" | Sleeps 5



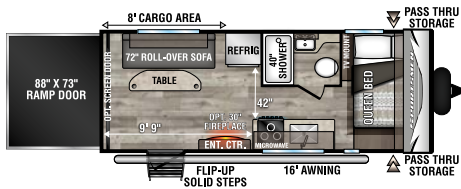
312FKLE UVW - 7,410 | Exterior Length - 35' 5" | Sleeps 4 **NEW**



332BHKLE UVW - 7,360 | Exterior Length - 37' 3" | Sleeps 10

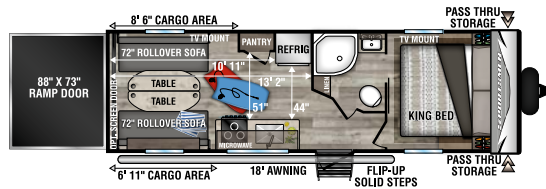


333KBLE UVW - 8,130 | Exterior Length - 38' | Sleeps 9



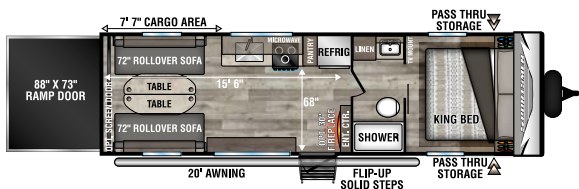
200THLE **TOY HAULER**

UVW - 4,520 | Exterior Length - 24' 3" | Sleeps 4



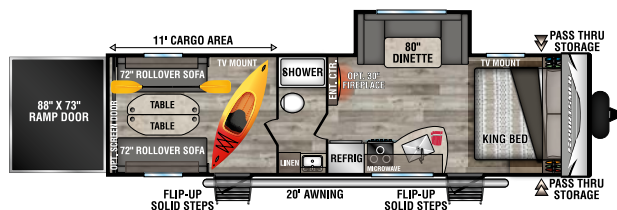
250THLE **TOY HAULER**

UVW - 5,270 | Exterior Length - 29' 1" | Sleeps 6



270THLE **TOY HAULER**

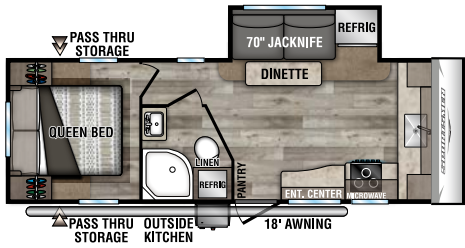
UVW - 5,470 | Exterior Length - 30' 10" | Sleeps 6



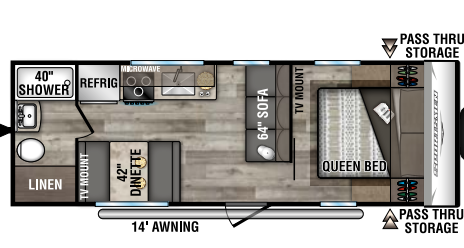
291THLE **TOY HAULER**

UVW - 6,340 | Exterior Length - 33' 10" | Sleeps 8

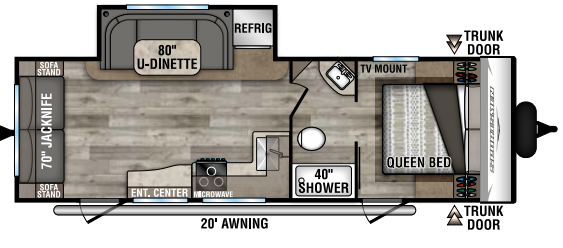
2021 SPORTSMEN SE TRAVEL TRAILERS



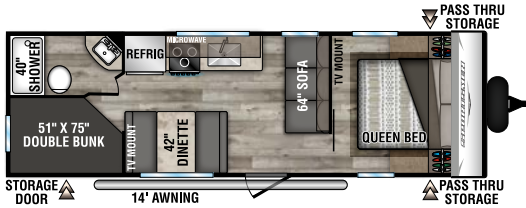
231FKKSE *NEW*
UWV - 5,270 | Exterior Length - 27' 5" | Sleeps 4



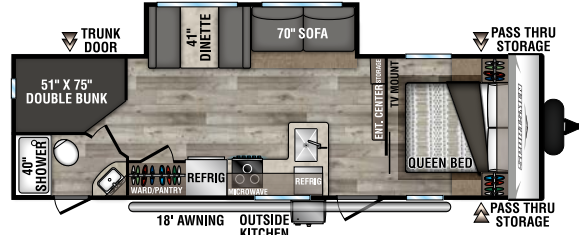
240FBSE
UWV - 4,510 | Exterior Length - 26' 2" | Sleeps 5



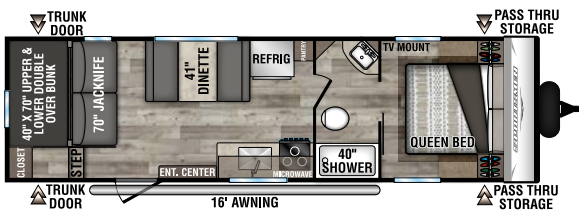
251RSSE *NEW*
UWV - 5,440 | Exterior Length - 29' 7" | Sleeps 6



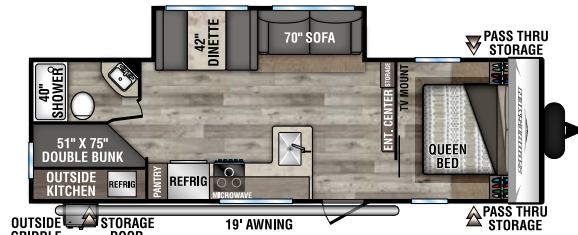
260BHSE
UWV - 4,780 | Exterior Length - 28' 7" | Sleeps 9



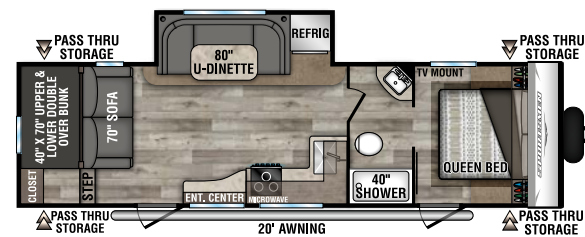
261BHKSE *NEW*
UWV - TBD | Exterior Length - 31' 7" | Sleeps 9



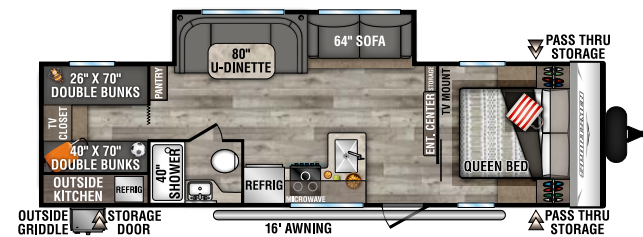
270BHSE *NEW*
UWV - 5,140 | Exterior Length - 31' 5" | Sleeps 6



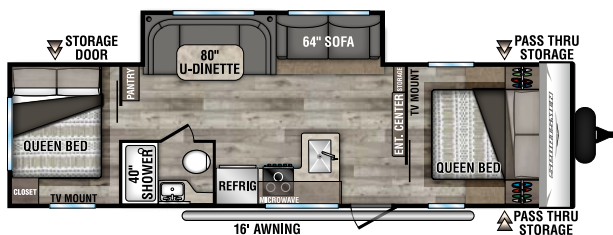
271BHKSE
UWV - 5,670 | Exterior Length - 30' 11" | Sleeps 9



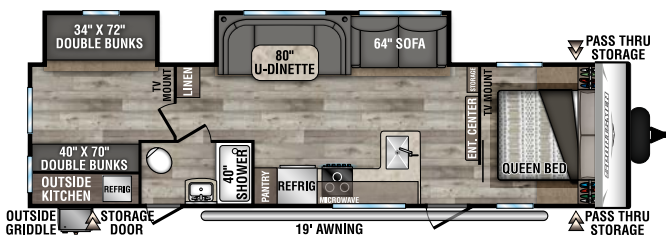
281BHSE
UWV - 5,870 | Exterior Length - 32' 7" | Sleeps 9



301BHKSE
UWV - 6,150 | Exterior Length - 32' 10" | Sleeps 10



301DBSE
UWV - 6,070 | Exterior Length - 32' 10" | Sleeps 8



312BHKSE
UWV - 7,080 | Exterior Length - 35' 9" | Sleeps 10

2021 SPORTSMEN SE & LE FEATURES



Climate Package adds insulation so you can extend the camping season, with a fully enclosed, insulated and heated underbelly to protect tanks and pipes (R-9 sidewalls, R-20 roof, and R-24 floor). (STD on LE only)



ILLUMINATED POWER AWNING
Standard power awning with LED light. Optional second awning on select models.



You'll appreciate the huge **PASS-THRU STORAGE AREAS** offered on most SEs and LEs.



EXTERIOR SPEAKERS
with LED lighting



STANDARD FLIP-UP ENTRY STEP and friction-hinge entry door with folding grab handle. Step deploys squarely to provide solid footing, and flips up in one easy motion.

Dealer:



WHEELS
Nitrogen-filled tires and spare tire w/carrier are standard (aluminum wheels OPT).



BACKUP CAMERA PREP
is standard.

HITCH LIGHT
Lighted power tongue jack



OUTSIDE SHOWER with hot and cold faucets.



985 N 900 W SHIPSEWANA, IN 46565

E: KZ@KZ-RV.COM

WWW.KZ-RV.COM

Due to continual research and advances, manufacturer reserves the right to change specifications, design, price and equipment without notice, and assumes no responsibility for any error in this literature. Some items shown are not included as standard or optional equipment.

©2020KZ | 11/17/20 | 40M