



RECREATIONAL  
VEHICLES

# CONNECT

LIGHTWEIGHT TRAVEL TRAILERS



The KZ **True 2 Warranty** is a **2-year hitch-to-bumper limited warranty** that's true to its name. The gold standard in RV protection, True 2 provides double the coverage of the industry norm. Plus, our warranty is backed by the craftsmanship and quality we're known for, so you can Go. Camp. Live. Wherever your adventure takes you, know that you're covered in your KZ.



# 2021 CONNECT TRAVEL TRAILERS

C272FK | Shale décor



## 2021 DÉCOR

ASHWOOD

SHALE

Connect Travel Trailers	C231RK	C241RLK	C251BHK	C261RB	C261RKK	C261RL	C272FK	C291BHK	C292RDK	C302RIK	C313MK	C313RL	C322BHK	C323RK	C332BHK
UVW (Unloaded Vehicle Weight)*	5,650	5,790	5,820	6,110	6,180	6,050	6,590	6,750	7,250	7,450	TBD	7,860	7,880	8,410	7,790
Dry Hitch Weight*	670	610	750	720	650	720	880	780	750	890	TBD	840	860	1,020	980
Dry Axle Weight*	4,980	5,180	5,070	5,390	5,530	5,330	5,710	5,970	6,500	6,560	TBD	7,020	7,020	7,390	6,810
CCC (Cargo Carrying Capacity)	1,615	1,475	1,555	1,235	1,160	1,305	2,650	2,445	1,925	1,805	TBD	1,790	1,680	1,390	1,990
GVWR	7,265	7,265	7,375	7,345	7,340	7,355	8,800	8,800	9,175	9,255	TBD	9,650	9,560	9,800	9,780
Interior Height	82"	82"	82"	82"	82"	82"	82"	82"	82"	82"	82"	82"	82"	82"	82"
Exterior Height w/ A/C	11' 6"	11' 6"	11' 6"	11' 4"	11' 4"	11' 4"	11' 4"	11' 4"	11' 4"	11' 6"	11' 6"	11' 6"	11' 6"	11' 6"	11' 6"
Exterior Width	96"	96"	96"	96"	96"	96"	96"	96"	96"	96"	96"	96"	96"	96"	96"
Exterior Length**	28' 6"	29' 5"	29' 10"	30' 8"	31' 3"	31' 3"	30' 11"	34' 4"	32' 3"	34' 4"	35' 11"	36' 11"	37' 10"	38' 5"	37' 6"
Refrigerator (cu. feet)	8	8	8	8	8	8	8	8	8	8	8	8	8	8	8
Water Heater Cap. (gal. G/E w/DSI)	6	6	6	6	6	6	6	6	6	6	6	6	6	6	6
Fresh Water Cap. (gal.)	45	45	45	45	45	45	45	45	45	45	45	45	45	45	45
Waste Water Cap. (gal.)	32	32	32	32	32	32	32	32	32	32	32	32	64	32	64
Gray Water Cap. (gal.)	64	32	64	64	64	32	64	64	64	64	32	32	32	64	32
LP Gas Cap. (lbs.)	40	40	40	40	40	40	40	40	40	40	40	40	40	40	40
Furnace BTUs (1,000s)	30	30	30	30	30	30	30	30	30	30	30	30	30	30	30
Tire Size	14"	14"	14"	14"	14"	14"	15"	15"	15"	15"	15"	15"	15"	15"	15"
Awning	19'	18'	18'	19'	16'	20'	18'	18'	20'	20'	13'/11'	15'	10'/11'	15'	18'

\*This weight reflects the rolling average unit weight for each model. Your trailer weight will vary according to optional equipment.

\*\*Exterior length is measured from rear of bumper to leading edge of coupler.



# 2021 CONNECT SE TRAVEL TRAILERS

C241BHKSE | Ashwood décor (shown w/OPT TV)



## 2021 DÉCOR

ASHWOOD

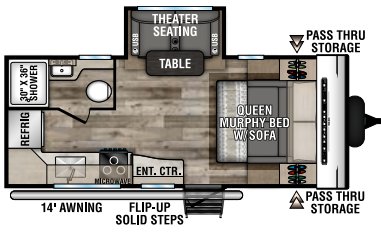
SHALE

Connect SE Travel Trailers	C191MBSE	C210MBKSE	C211MKSE	C221FKKSE	C221RBSE	C231BHKSE	C241BHKSE	C271BHKSE	C281BHKSE	C281RDKSE	C281RLSE	C312BHKSE	C321BHKSE
UVW (Unloaded Vehicle Weight)*	4,580	4,520	4,980	TBD	5,230	5,380	5,490	TBD	TBD	TBD	6,170	7,260	TBD
Dry Hitch Weight*	510	490	540	TBD	640	710	660	TBD	TBD	TBD	781	660	TBD
Dry Axle Weight*	4,070	4,030	4,440	TBD	4,590	4,670	4,860	TBD	TBD	TBD	5,389	6,600	TBD
CCC (Cargo Carrying Capacity)	1,920	1,980	1,520	TBD	2,090	1,975	1,810	TBD	TBD	TBD	1,830	2,200	TBD
GVWR	6,500	6,500	6,500	TBD	7,320	7,355	7,330	TBD	TBD	TBD	8,000	9,460	TBD
Interior Height	78"	78"	78"	78"	78"	78"	78"	78"	78"	78"	78"	78"	78"
Exterior Height w/ A/C	10' 10"	10' 10"	10' 10"	10' 10"	10' 10"	10' 10"	10' 10"	10' 10"	10' 10"	10' 10"	10' 10"	11' 2"	11' 2"
Exterior Width	96"	96"	96"	96"	96"	96"	96"	96"	96"	96"	96"	96"	96"
Exterior Length**	22' 5"	24' 11"	25' 11"	26' 7"	26' 11"	27' 9"	29' 6"	31' 11"	33' 11"	32' 11"	32' 5"	36' 9"	36' 11"
Refrigerator (cu. feet)	10	10	10	10	10	10	10	10	10	10	10	10	10
Water Heater Cap. (gal. G/E w/DSI)	6	6	6	6	6	6	6	6	6	6	6	6	6
Fresh Water Cap. (gal.)	45	45	45	45	45	45	45	45	45	45	45	45	45
Waste Water Cap. (gal.)	32	32	32	32	32	32	32	32	32	32	32	32	64
Gray Water Cap. (gal.)	32	32	32	64	64	32	32	64	32	64	32	32	32
LP Gas Cap. (lbs.)	40	40	40	40	40	40	40	40	40	40	40	40	40
Furnace BTUs (1,000s)	30	30	30	30	30	30	30	30	30	30	30	30	30
Tire Size	14"	14"	14"	14"	14"	14"	14"	14"	15"	15"	15"	15"	15"
Awning	14'	15'	18'	18'	16'	19'	18'	20'	20'	20'	20'	18'	20'

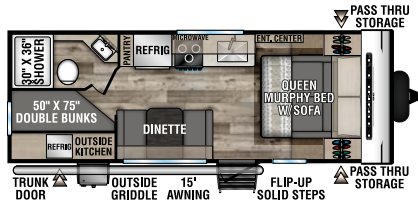
\*This weight reflects the rolling average unit weight for each model. Your trailer weight will vary according to optional equipment.

\*\*Exterior length is measured from rear of bumper to leading edge of coupler.

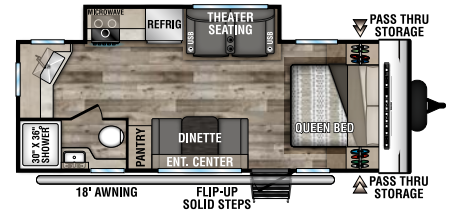
# 2021 CONNECT SE FLOORPLANS



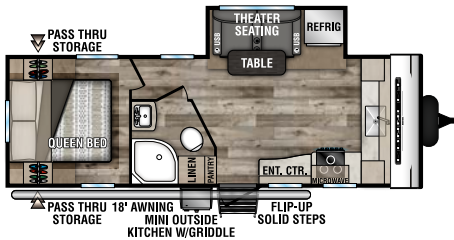
**C191MBSE** **NEW**  
UW - 4,580 | Exterior Length - 22' 5" | Sleeps 2



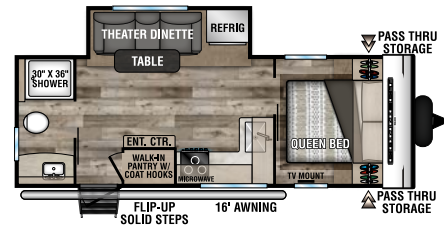
**C210MBKSE** **NEW**  
UW - 4,520 | Exterior Length - 24' 11" | Sleeps TBD



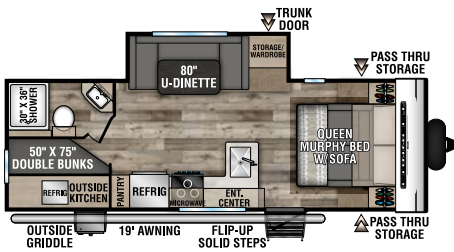
**C211MKSE** **NEW**  
UW - 4,980 | Exterior Length - 25' 11" | Sleeps 3



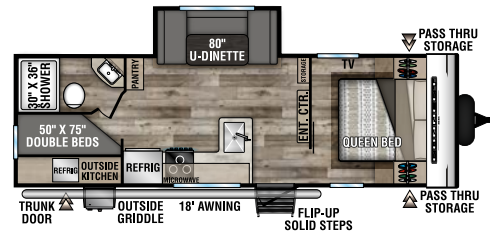
**C221FKKSE** **NEW**  
UW - TBD | Exterior Length - 26' 7" | Sleeps 2



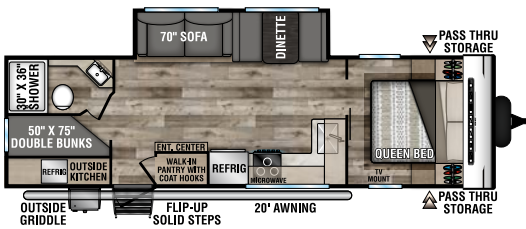
**C221RBSE**  
UW - 5,230 | Exterior Length - 26' 11" | Sleeps 3



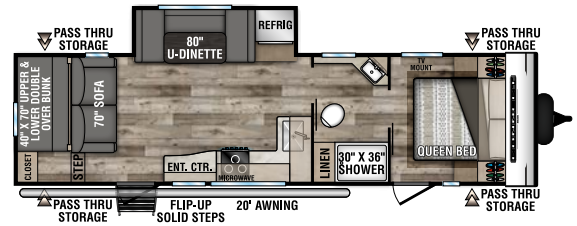
**C231BHKSE**  
UW - 5,380 | Exterior Length - 27' 9" | Sleeps 8



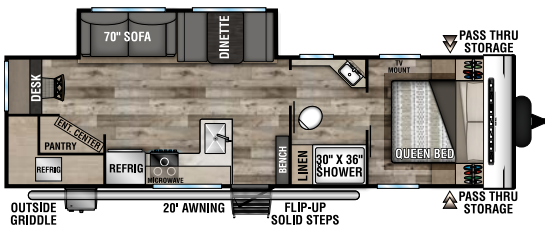
**C241BHKSE**  
UW - 5,490 | Exterior Length - 29' 6" | Sleeps 8



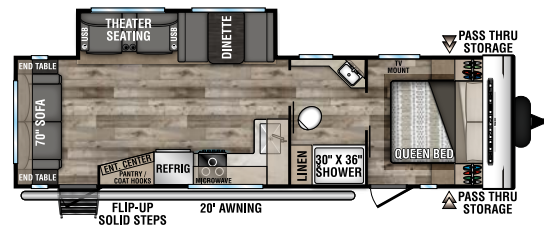
**C271BHKSE** **NEW**  
UW - TBD | Exterior Length - 31' 11" | Sleeps 8



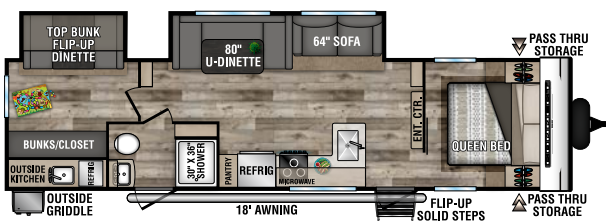
**C281BHSE** **NEW**  
UW - TBD | Exterior Length - 33' 11" | Sleeps 8



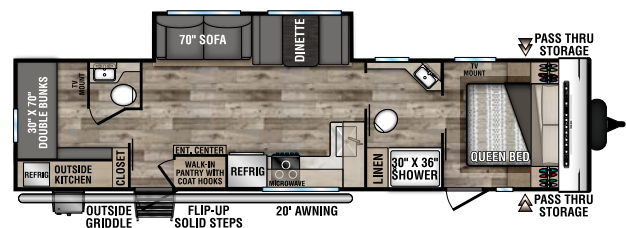
**C281RDKSE** **NEW**  
UW - TBD | Exterior Length - 32' 11" | Sleeps 5



**C281RLSE** **NEW**  
UW - 6,170 | Exterior Length - 32' 5" | Sleeps 4



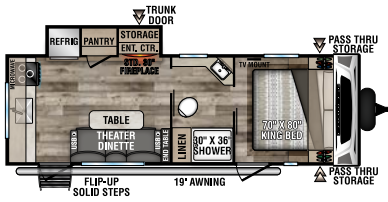
**C312BHKSE**  
UW - 7,260 | Exterior Length - 36' 9" | Sleeps 8



**C321BHKSE** **NEW**  
UW - TBD | Exterior Length - 36' 11" | Sleeps 7

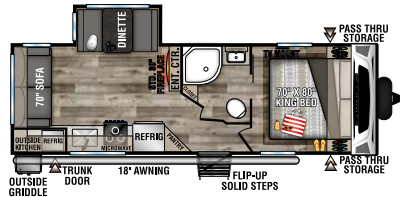


# 2021 CONNECT FLOORPLANS



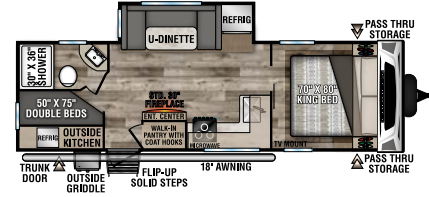
## C231RK

UVW - 5,650 | Exterior Length - 28' 6" | Sleeps 3



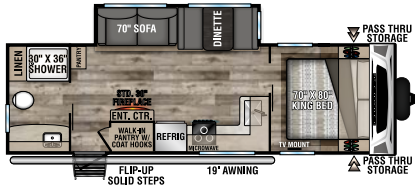
## C241RLK

UVW - 5,790 | Exterior Length - 29' 5" | Sleep 5



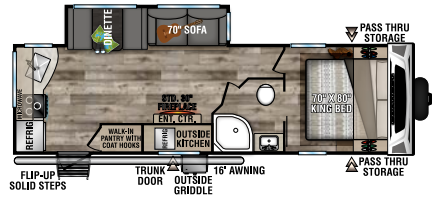
## C251BHK

UVW - 5,820 | Exterior Length - 29' 10" | Sleeps 7



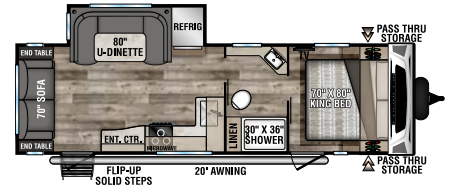
## C261RB

UVW - 6,110 | Exterior Length - 30' 8" | Sleeps 5



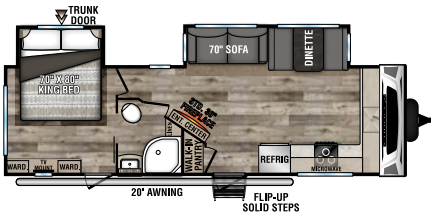
## C261RKK

UVW - 6,180 | Exterior Length - 31' 3" | Sleeps 5



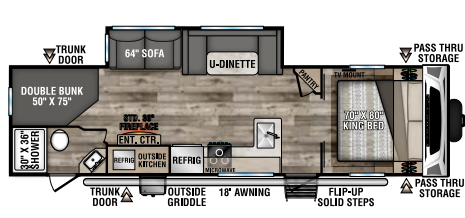
## C261RL

UVW - 6,050 | Exterior Length - 31' 3" | Sleeps 6



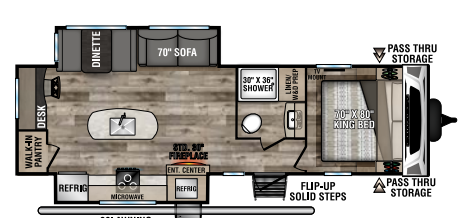
## C272FK

UVW - 6,590 | Exterior Length - 30' 11" | Sleeps 5



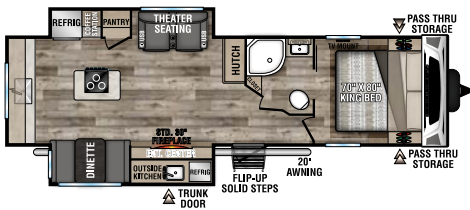
## C291BHK

UVW - 6,750 | Exterior Length - 34' 4" | Sleeps 10



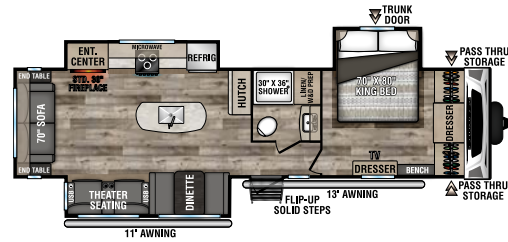
## C292RDK **NEW**

UVW - 7,250 | Exterior Length - 32' 3" | Sleeps 5



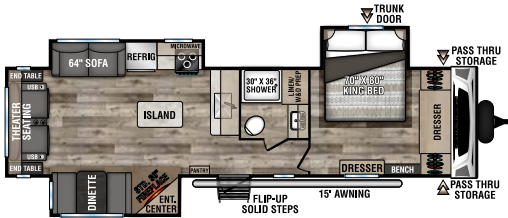
## C302RIK

UVW - 7,450 | Exterior Length - 34' 4" | Sleeps 4



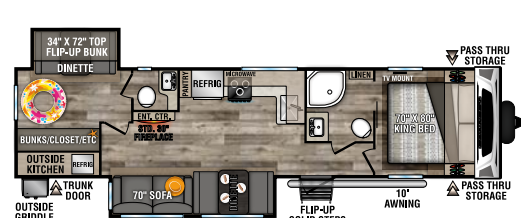
## C313MK

UVW - TBD | Exterior Length - 35' 11" | Sleep 3 **NEW**



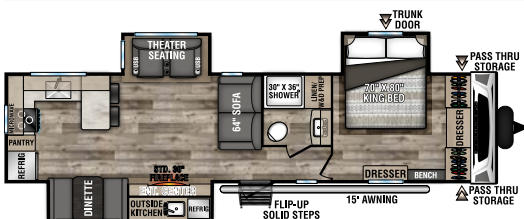
## C313RL

UVW - 7,860 | Exterior Length - 36' 11" | Sleeps 5



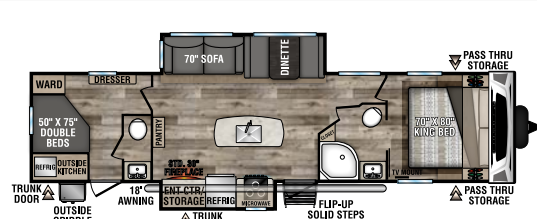
## C322BHK

UVW - 7,880 | Exterior Length - 37' 10" | Sleeps 9



## C323RK

UVW - 8,410 | Exterior Length - 38' 5" | Sleeps 5



## C332BHK

UVW - 7,790 | Exterior Length - 37' 6" | Sleeps 9

# 2021 CONNECT & CONNECT SE FEATURES & OPTIONS



**LUXURY EDITION** (opt) includes solid surface countertops, 5.1 stabilizing system, frameless windows, painted front cap, and roller shades (Connect only).



**SE'S OPTIONAL FRONT WINDOW** offers not only a more modern and attractive design, but appreciable more natural light inside.



**ALUMINUM WHEELS** and nitrogen-filled radial tires are standard.



**KZ ENGAGE PACKAGE:** powered by One Control. One Control monitors the battery levels, controls the sliderooms, leveling system, awning(s), inside/outside lighting, and TPMS prep.



**LIGHTED TONGUE JACK** assists setup & teardown.



Added insulation so you can extend the camping season, with a fully enclosed, insulated and heated underbelly to protect tanks and pipes (R-9 sidewalls, R-20 roof, and R-24 floor).



**5/8" TONGUE & GROOVE PLYWOOD**



**THEATER SEATING** with cupholders, USB plug, heat and massage



21-Inch **STAINLESS STEEL RANGE** with illuminated control knobs.



**SEAMLESS COUNTERTOPS** with deep under-mount stainless steel kitchen sink, sink cover for added countertop space, and stainless steel high-rise faucet.

Dealer:



985 N 900 W SHIPSEWANA, IN 46565

E: KZ@KZ-RV.COM

WWW.KZ-RV.COM

Due to continual research and advances, manufacturer reserves the right to change specifications, design, price and equipment without notice, and assumes no responsibility for any error in this literature. Some items shown are not included as standard or optional equipment.

©2020KZ | 11/18/20 | 40M