



RECREATIONAL
VEHICLES

SPORTSMEN

DESTINATION TRAILERS & FIFTH WHEELS



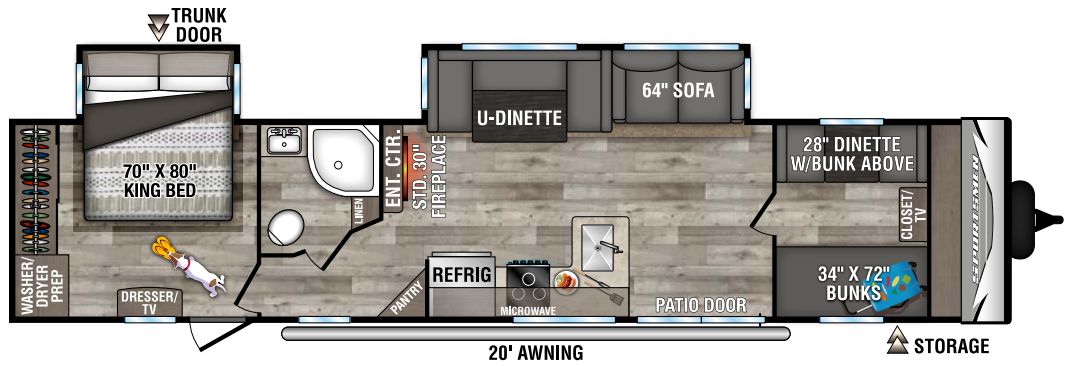
The KZ **True 2 Warranty** is a **2-year hitch-to-bumper limited warranty** that's true to its name. The gold standard in RV protection, True 2 provides double the coverage of the industry norm. Plus, our warranty is backed by the craftsmanship and quality we're known for, so you can Go. Camp. Live. Wherever your adventure takes you, know that you're covered in your KZ.



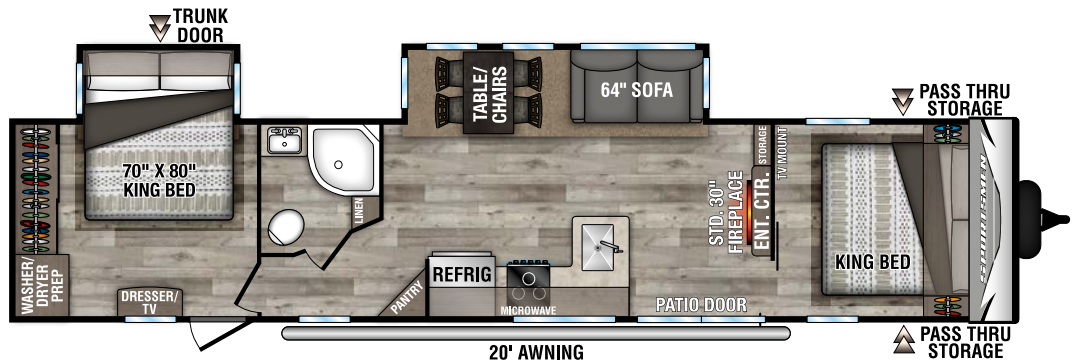
2021 SPORTSMEN TRAVEL TRAILERS



363FL | Gunmetal décor



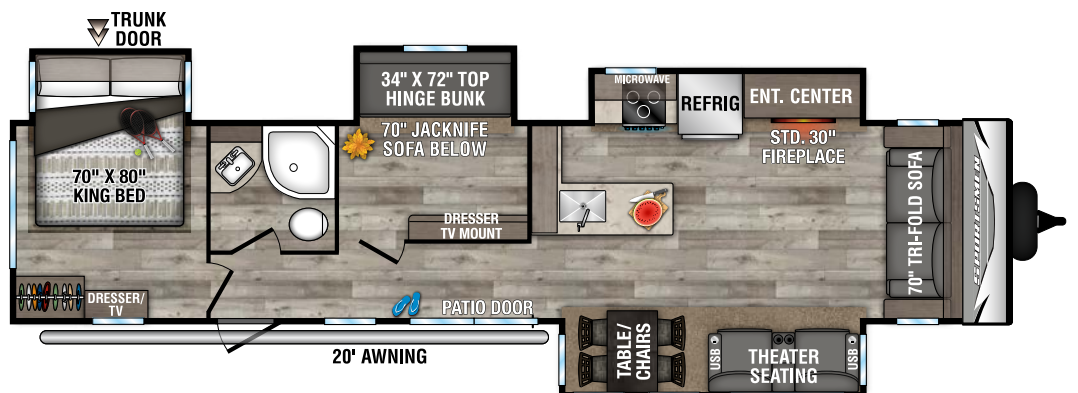
362BH UVW - 8,280 | Exterior Length - 40' 9" | Sleeps 10



362DB UVW - 8,330 | Exterior Length - 40' 9" | Sleeps 6



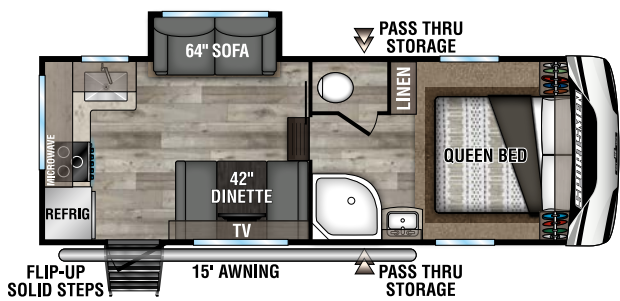
363FL UVW - 8,910 | Exterior Length - 40' 9" | Sleeps 4



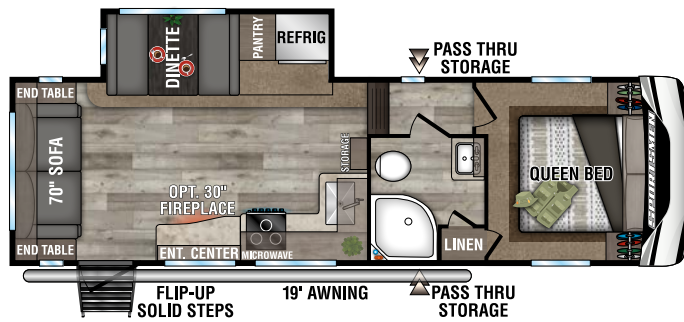
364BH UVW - 9,340 | Exterior Length - 41' 2" | Sleeps 6



2021 SPORTSMEN FIFTH WHEELS



231RK UVW - 6,150 | Exterior Length - 24' 5" | Sleeps 5



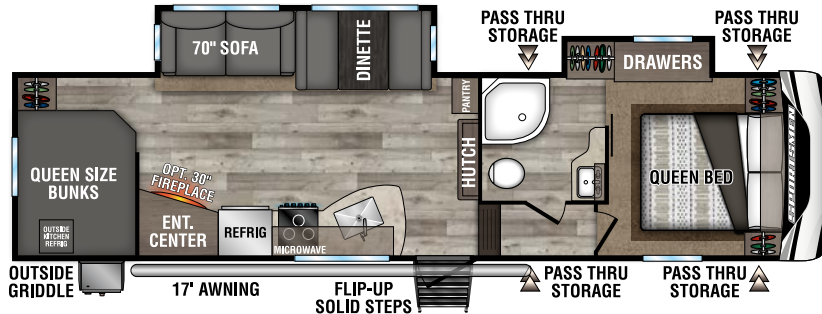
251RL UVW - 6,970 | Exterior Length - 28' 11" | Sleeps 5

292BHK

UVW - 8,150

Exterior Length - 34' 5"

Sleeps 9

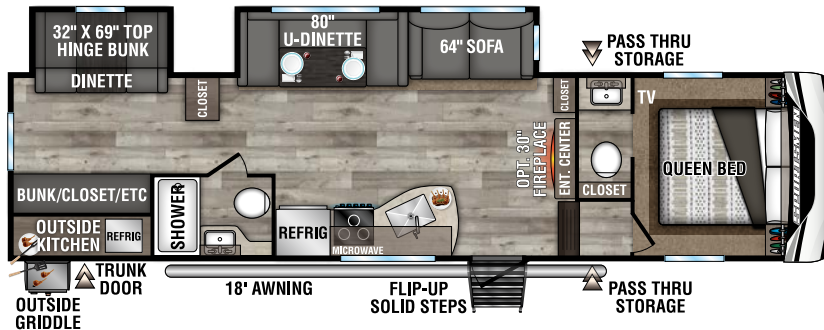


302BHK

UVW - 8,800

Exterior Length - 35' 4"

Sleeps 10

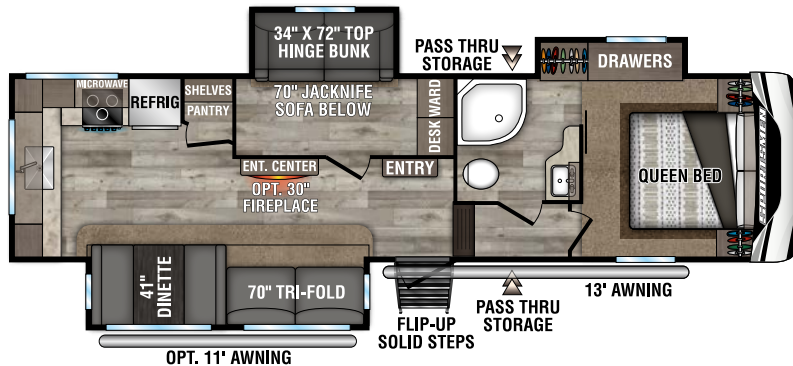


303MB **NEW**

UVW - 8,560

Exterior Length - 33' 9"

Sleeps 7

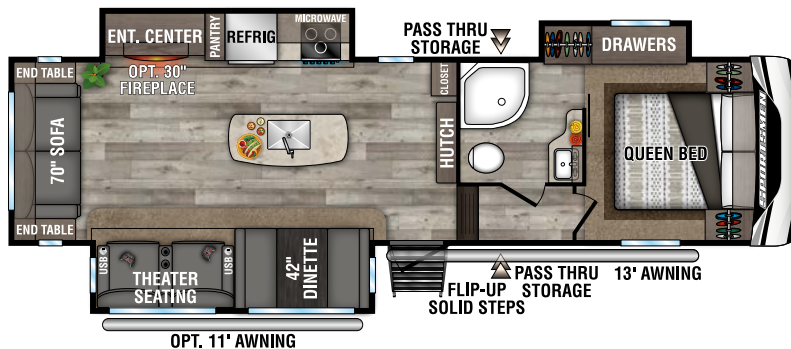


303RL

UVW - 8,580

Exterior Length - 33' 9"

Sleeps 5



2021 SPORTSMEN FEATURES



Standard 8 CU FT gas/ electric, or choose the optional 10 CU FT 12V **REFRIGERATOR** (shown). Both offer room for all your camping goodies. Destination trailers receive 18 CU FT residential refrigerator.



COOKTOP offers recessed, three-burner work area with a glass cover, and LED accented oven knobs.



STAINLESS STEEL under-mount sink with high-rise faucet with pull-down spring sprayer.



Added insulation to extend the camping season, with a fully enclosed, insulated and heated underbelly to protect tanks and pipes (R-9 sidewalls, R-20 roof, and R-24 floor).



THEATER SEATING with cupholders, USB plug, heat and massage.



Optional 4-point auto electric leveling.



2021 DÉCOR

GUNMETAL

PEBBLE



FLEXIBLE

PUNCTURE RESISTANCE

REFLECTIVE

TUFFLEX ROOFING by Dacor Products 20-YEAR WARRANTY!

DESTINATION TRAILERS

Sportsmen	362BH	362DB	363FL	364BH
UVW (Unloaded Vehicle Weight)*	8,280	8,330	8,910	9,340
Dry Hitch Weight*	1,230	1,230	1,620	1,830
Dry Axle Weight*	7,050	7,100	7,290	7,510
CCC (Cargo Carrying Capacity)	2,180	2,130	1,550	1,120
GVWR	10,460	10,460	10,460	10,460
Interior Height	82"	82"	82"	82"
Exterior Height w/ A/C	11' 4"	11' 4"	11' 4"	11' 4"
Exterior Width	96"	96"	96"	96"
Exterior Length**	40' 9"	40' 9"	40' 9"	41' 2"
Refrigerator (cu. feet)	18	18	18	18
Water Heater Cap. (gal. G/E w/DSI)	6	6	6	6
Fresh Water Cap. (gal.)	45	45	45	45
Waste Water Cap. (gal.)	32	32	32	32
Gray Water Cap. (gal.)	64	64	64	64
1/2 Bath Cap. (gal.)	N/A	N/A	N/A	N/A
LP Gas Cap. (lbs.)	60	60	60	60
Furnace BTUs (1,000s)	30	30	30	30
Tire Size	15"	15"	15"	15"
Awning	20'	20'	18'	20'

FIFTH WHEELS

231RK	251RL	292BHK	302BHK	303MB	303RL
6,150	6,970	8,150	8,800	8,560	8,580
790	1,180	1,470	1,290	1,560	1,330
5,360	5,790	6,680	7,510	7,000	7,250
1,350	1,530	1,850	1,200	1,440	1,420
7,500	8,500	10,000	10,000	10,000	10,000
75"	75"	75"	75"	75"	75"
11' 11"	12'	12' 5"	12' 5"	12' 5"	12' 5"
96"	96"	96"	96"	96"	96"
24' 5"	28' 11"	34' 5"	35' 4"	33' 9"	33' 9"
8	8	8	8	8	8
6	6	6	6	6	6
45	45	45	45	45	45
53	53	53	64	53	53
85	53	53	32	85	53
N/A	N/A	N/A	40	N/A	N/A
60	60	60	60	60	60
30	30	30	30	30	30
15"	16"	16"	16"	16"	16"
15'	19'	17'	18'	13'/11' opt.	13'/11' opt.

*This weight reflects the rolling average unit weight for each model. Your trailer weight will vary according to optional equipment.

**For travel trailers, exterior length is measured from rear of bumper to leading edge of coupler. For fifth wheels, exterior length is measured from rear of bumper to center of coupler.



985 N 900 W SHIPSEWANA, IN 46565

E: KZ@KZ-RV.COM

WWW.KZ-RV.COM

Due to continual research and advances, manufacturer reserves the right to change specifications, design, price and equipment without notice, and assumes no responsibility for any error in this literature. Some items shown are not included as standard or optional equipment.

©2020KZ | 12/29/20 | 10M