



RECREATIONAL  
VEHICLES

# DURANGO

FULL PROFILE LUXURY FIFTH WHEELS



The KZ **True 2 Warranty** is a **2-year hitch-to-bumper limited warranty** that's true to its name. The gold standard in RV protection, True 2 provides double the coverage of the industry norm. Plus, our warranty is backed by the craftsmanship and quality we're known for, so you can Go. Camp. Live. Wherever your adventure takes you, know that you're covered in your KZ.



D326RLT | Cobblestone décor

# 2021 DURANGO FIFTH WHEELS

D326RLT | Cobblestone décor



## 2021 DÉCOR

BARISTA

COBBLESTONE

Fifth Wheels	D301RLT	D321RKT	D326RLT	D333RLT	D343MBQ	D348BHF
UWW (Unloaded Vehicle Weight)*	10,170	10,300	10,610	10,730	11,590	12,370
Dry Hitch Weight*	1,960	1,990	1,890	2,030	2,250	2,210
Dry Axle Weight*	8,210	8,310	8,720	8,700	9,340	10,160
CCC (Cargo Carrying Capacity)	2,825	2,695	2,385	2,265	3,405	2,625
GVWR	12,995	12,995	12,995	12,995	14,995	14,995
Exterior Height w/ A/C	12' 9"	12' 9"	TBD	12' 10"	12' 10"	12' 10"
Exterior Width	96"	96"	96"	96"	96"	96"
Exterior Length**	34' 3"	34' 10"	37' 7"	37' 10"	40' 3"	40' 8"
Refrigerator (cu. feet)	12	12	12	12	12	12
Water Heater Cap. (on-demand tankless)	***	***	***	***	***	***
Fresh Water Cap. (gal.)	76	76	76	76	76	76
Waste Water Cap. (gal.)	53	53	53	53	53	93
Gray Water Cap. (gal.)	53	93	53	53	53	53
1/2 Bath Cap. (gal.)	N/A	N/A	N/A	N/A	N/A	40
LP Gas Cap. (lbs.)	60	60	60	60	60	60
Furnace BTUs (1,000s)	35	35	35	35	35	35
Tire Size	16"	16"	16"	16"	16"	16"
Awning	16'/11' opt.	16'	17'	18'/11' opt.	20'/11' opt.	16'

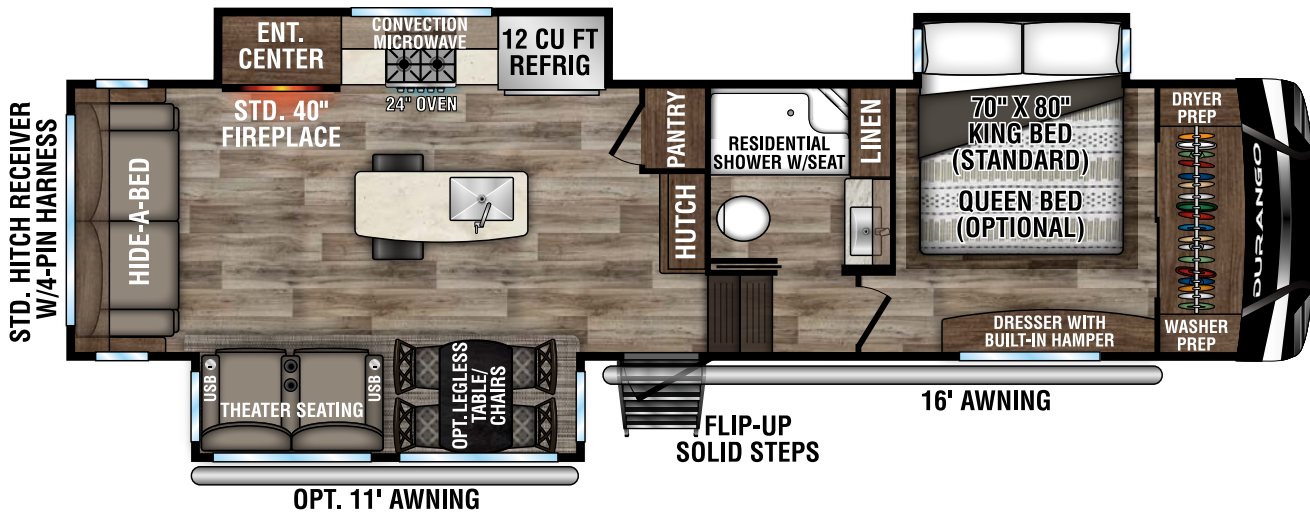
\*This weight reflects the rolling average unit weight for each model. Your trailer weight will vary according to optional equipment.

\*\*Exterior length is measured from rear of bumper to center of coupler.

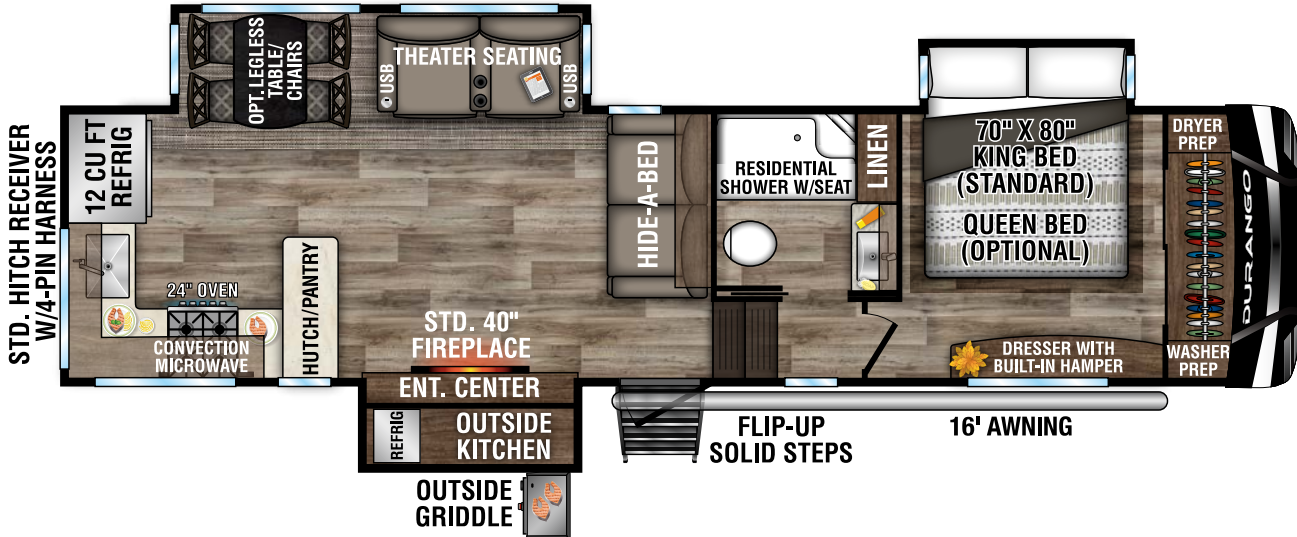
\*\*\*Infinite supply.



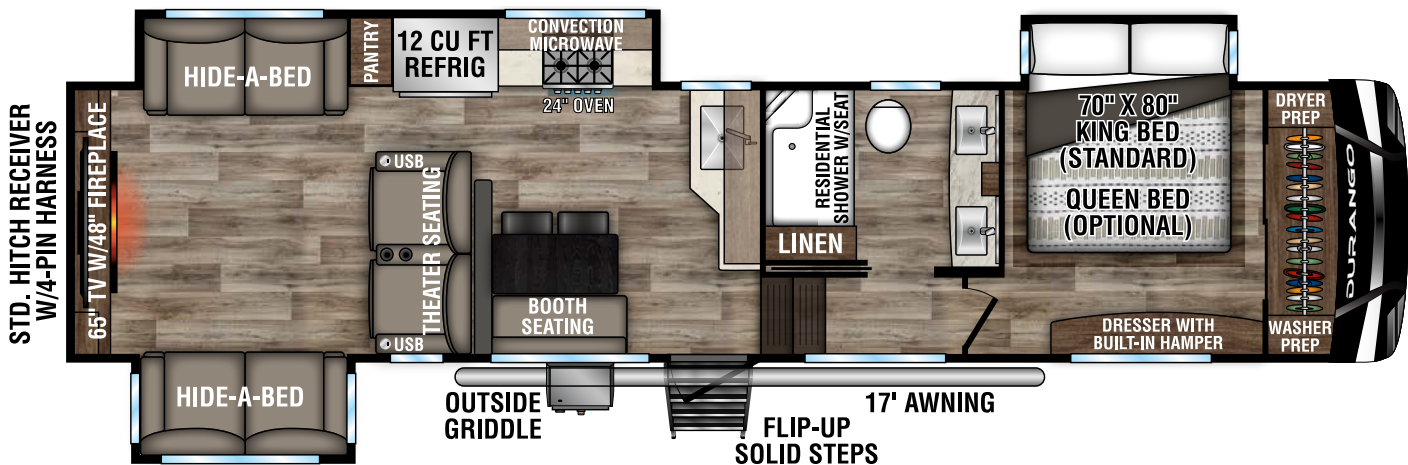
# 2021 DURANGO FIFTH WHEELS



**D301RLT** UUV - 10,170 | Exterior Length - 34' 3" | Sleeps 4

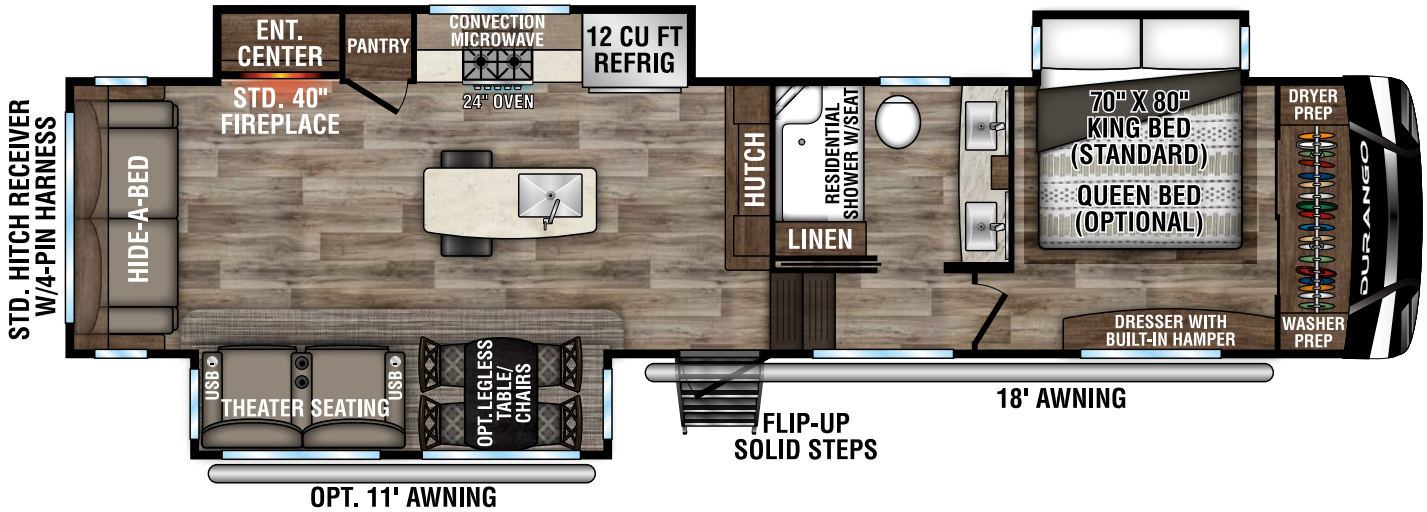


**D321RKT** UUV - 10,300 | Exterior Length - 34' 10" | Sleeps 4

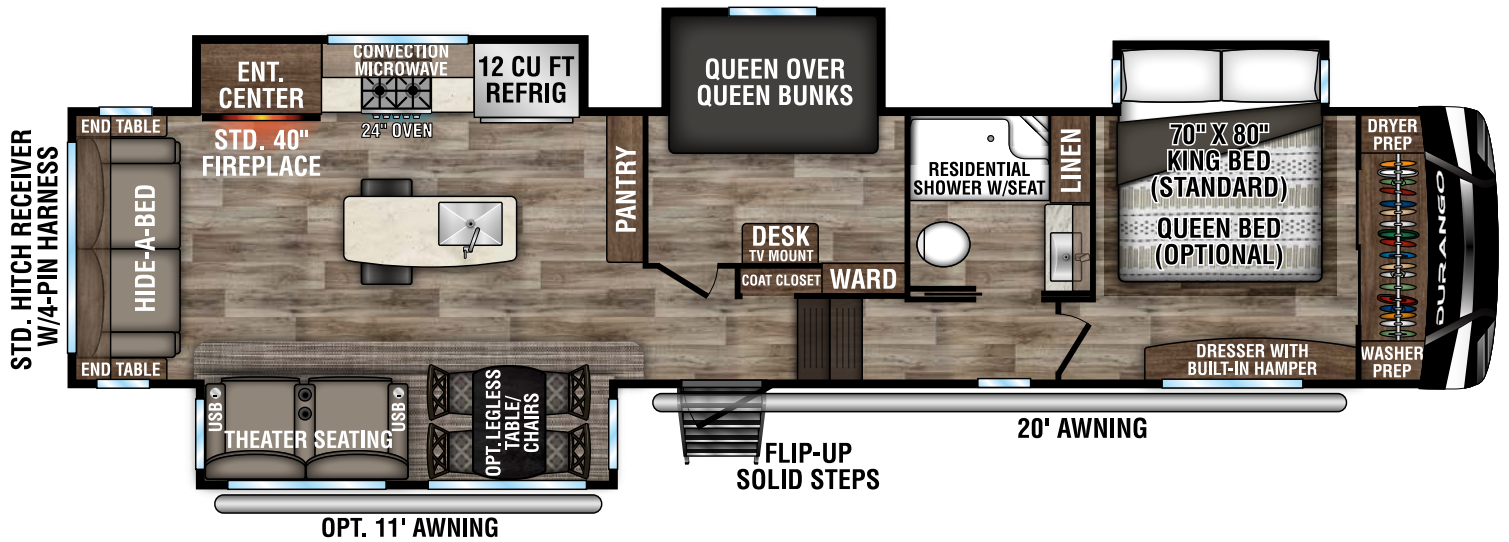


**D326RLT** UUV - 10,610 | Exterior Length - 37' 7" | Sleeps 6 **NEW**

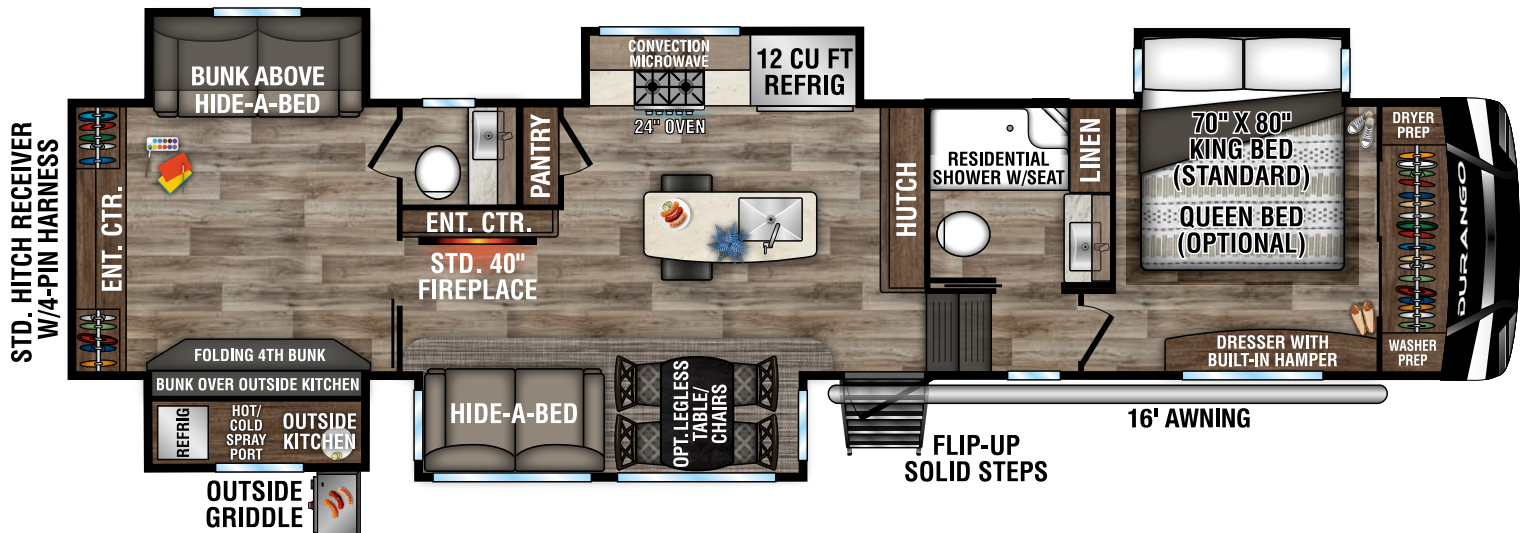
# 2021 DURANGO FIFTH WHEELS



**D333RLT** UWW - 10,730 | Exterior Length - 37'10" | Sleeps 4



**D343MBQ** UWW - 11,590 | Exterior Length - 40'3" | Sleeps 8



**D348BHF** UWW - 12,370 | Exterior Length - 40'8" | Sleeps 9



# 2021 DURANGO INTERIOR & EXTERIOR FEATURES



12 CU FT gas/electric  
**4-DOOR REFRIGERATOR**  
with temperature controls



Bedroom dresser with  
**BUILT-IN HAMPER**



**THEATER SEATING**  
with  
cupholders,  
USB plug,  
heat and  
massage



24-inch oven with 4-burner  
gas range and 30-inch  
convection microwave



**STAINLESS STEEL SINK**  
with spring sprayer faucet and  
seamless **SOLID-SURFACE**  
**COUNTERTOPS**

**LED TV & MULTI-MEDIA STEREO** with DVD,  
Bluetooth and wireless connectivity with **COZY AMBIENCE** from the 40-inch wide-view fireplace



Stainless steel  
**BATH SINK**  
with  
high-rise  
faucet



- 70 x 80-inch Serta Comfort Foam king bed
- overhead storage and decorative shelving
- USB ports, outlets and oversized light switches within easy reach



Residential one-piece fiberglass shower stall w/  
built-in seat & glass doors



**FLEXIBLE**

**PUNCTURE RESISTANCE**

**REFLECTIVE**

**TUFFLEX ROOFING** by Dicor Products 20-YEAR WARRANTY!



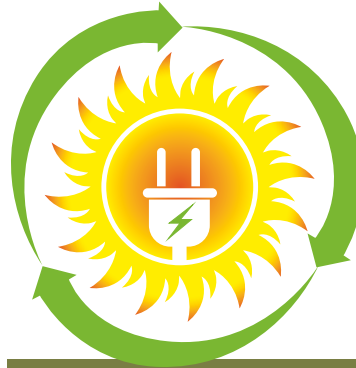
# 2021 DURANGO EXTERIOR FEATURES



Heated, insulated & enclosed underbelly plus foil in floor, roof, front, rear! R-11 sidewalls, R-38 roof and floor.



**CENTRALIZED COMMAND CENTER** well-lit, heated & all systems conveniently located



Harness the power of the sun to run your TV and outlets. Roof-mounted solar prep standard. **Optional "Off the Grid" solar package** by Xantrex (220W solar panel, 30A MPPT solar charge controller w/MPPT remote control panel, 2,000W true sine wave inverter w/all outlets "hot").



## KZ ENGAGE

is powered by OneControl with a 5" screen. The control system monitors tank and battery levels, controls the sliderooms, leveling system, awnings, and inside/outside lighting.



**140-CUBIC-FOOT BASEMENT STORAGE** featuring motion-light



8-lug, heavy-duty, 16-inch **ALUMINUM WHEELS** with E-range tires (G-range on select models)



**STANDARD FLIP-UP ENTRY STEP** provides solid footing, coming and going. Handy friction hinge and screenshot auto-door-close feature.



**5/8" TONGUE & GROOVE PLYWOOD**



Standard **4-POINT AUTO-LEVELING** does all the work



Two attic vents are in each RV, providing vital escape routes for unwanted moisture that accumulates during use.

Dealer:



Portions of this brochure were used with the expressed authority of Dexter Axle, but Dexter Axle is not responsible for the accuracy of the information contained herein.



985 N 900 W SHIPSEWANA, IN 46565

E: KZ@KZ-RV.COM

WWW.KZ-RV.COM

Due to continual research and advances, manufacturer reserves the right to change specifications, design, price and equipment without notice, and assumes no responsibility for any error in this literature. Some items shown are not included as standard or optional equipment.

©2020KZ | 11/17/20 | 25M