

SPORTSMEN SE, LE & LE TOY HAULERS

TRAVEL TRAILERS & TOY HAULERS



RECREATIONAL
VEHICLES

SPORTSMEN ^{SE}

SPORTSMEN ^{LE}



SPORTSMEN SE, LE & LE TOY HAULERS
TRAVEL TRAILERS & TOY HAULERS

INTERIOR

SPORTSMEN SE

SPORTSMEN SE... VALUE & STYLE

Take family camping to a fresh, innovative level with the affordable **SPORTSMEN SE**. It's a budget-friendly version of the popular Sportsmen LE, KZ's longtime fan favorite, with many of the same value-packed features.

With elbow room and the comforts of home, **SPORTSMEN SE** keeps everybody happy, comfortable and plugged in, with a variety of great floorplans designed for making memories.



REAL KITCHEN

Three-burner cooktop with glass cover and oven, range hood with fan, microwave with turntable, and 10 CU FT 12V dual-temp-control refrigerator complete the kitchen.

271BHSE | Hazelnut décor



FULL BATH

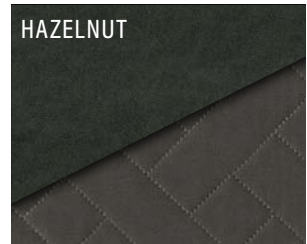
Vanity with mirror, foot-flush toilet, color-accented shower surround, and bathroom shelf with towel hooks. (271BHSE shown)



SE's spacious window-view **DINETTE** converts easily to comfortable sleep space. (271BHSE shown)

2020 DÉCOR

HAZELNUT



271BHSE | Hazelnut décor



BUNKHOUSE... AND THEN SOME!
Several SEs offer extra-large corner double bunks with double window views, lighting, electrical outlet, plus ample storage space below.

SLUMBER ZONE
Reversible quilted comforter, tinted windows with valances and mini blinds, nightstands, overhead storage shelf and full-length his-and-hers closets provide a good night's rest. (271BHSE shown)



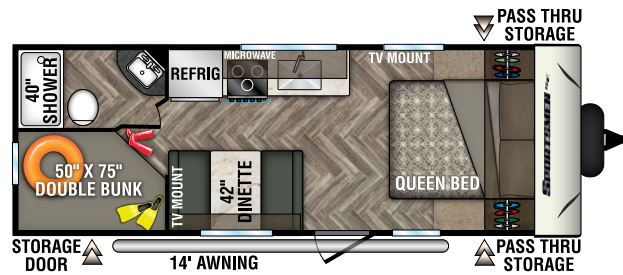
WIDE-OPEN SPACES
Numerous thoughtful floorplans all offer generous, fully-appointed bath spaces with storage galore. (271BHSE shown)

STANDARDS

- KZ Exclusive Tough Shield Exterior Metal
- 1-Piece, Seamless, Walk-on, Tufflex Roofing Material w/15-Year Warranty
- 3/8" Fully Walk-On Roof Decking
- Radius Truss Roof Rafters
- Awning w/Drip Rail & Spouts
- R-7 Insulation
- Radius Entry Door
- Extra-Large Radius Baggage Doors
- Tinted Windows
- Diamond Plate Rock Guard
- Rear Bumper w/Sewer Hose Storage
- (2) 20# LP Bottles
- 30 AMP Service
- Cable Hookup
- Digital TV Antenna w/Booster
- 13,500 BTU A/C
- Water Heater Bypass Kit
- 3-Burner Cooktop
- Range Hood w/12V Light & Exhaust Fan
- Microwave w/Turntable
- Large Overhead Cabinets
- Roller Ball Bearing Drawer Guides
- LED Interior Lighting
- Linoleum Throughout
- Mini Blinds
- Monitor Panel
- Power Vent in Bath
- Reversible Quilted Comforter
- Shower Surround

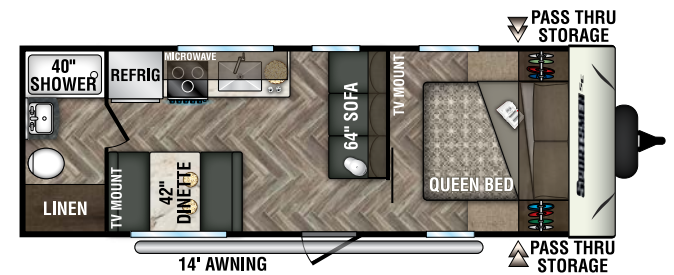
OPTIONS

- 15,000 BTU A/C IPO 13,500 BTU A/C
- Low Pro 13,500 A/C IPO 13,500 (271BHSE & smaller)
- Low Pro 15,000 A/C IPO 13,500 (271BHSE & smaller)
- 7 CU FT Gas/Electric Refrigerator
IPO 10 CU FT 12V Refrigerator
- Outside Kitchen (271BHSE, 301BHSE, 312BHSE)
- 50 Amp Service w/2nd A/C Prep (301/312)
- Ottoman w/Storage (N/A 230BHSE, 240FBSE, 260BHSE)
- Sink Cover
- Aluminum Wheels

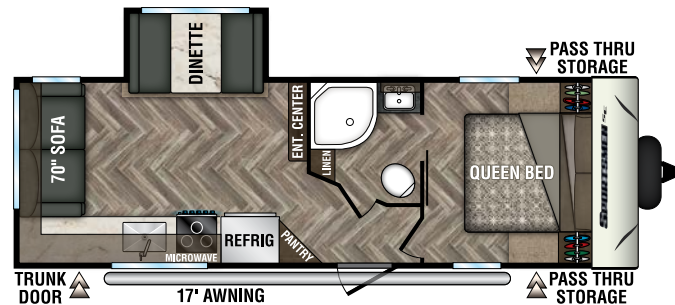


230BHSE

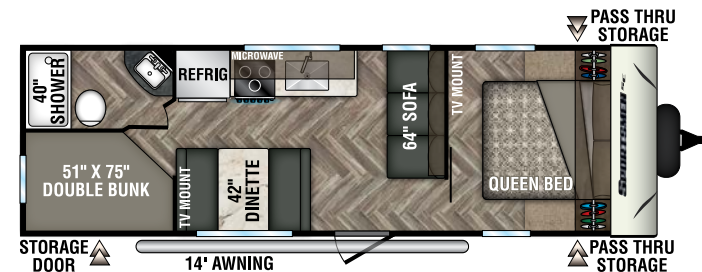
UVW - 4,340 | Exterior Length - 25' 6" | Sleeps 7

240FBSE **NEW**

UVW - 4,470 | Exterior Length - 26' 6" | Sleeps 5

241RLSE **NEW**

UVW - 5,270 | Exterior Length - 28' 6" | Sleeps 5



260BHSE

UVW - 4,800 | Exterior Length - 28' 11" | Sleeps 9

KZ ADVANTAGE
PACKAGE
(MANDATORY OPTION)
EXTERIOR

- New Aerodynamic Front Profile w/Smooth Metal Front
- Three-Toned Exterior Metal
- Friction-Hinged Entry Door
- Key-Alike Program for Entry & Baggage Doors
- Exterior Speakers
- Spare Tire & Carrier
- Nitrogen-Filled Tires
- (4) Stabilizer Jacks
- LP Bottle Cover
- Backup Camera Prep
- Solar Prep
- Battery Disconnect

- Leash Latch w/Bonus Beverage Opener

INTERIOR

- Jackknife Sofa w/Center Console
- Drop-In Cooktop w/Glass Cover & Oven
- (2) 12V USB Ports in bedroom
- Plywood Bed Base
- Upper Bunk Windows (select floorplans)
- Seamless Countertops w/Deep Undermount Stainless Steel Kitchen Sink
- Foot-Flush Toilet
- (2) 6.5" Interior Speakers
- Multi-Media Sound Bar Stereo w/Bluetooth, HDMI and USB Charge

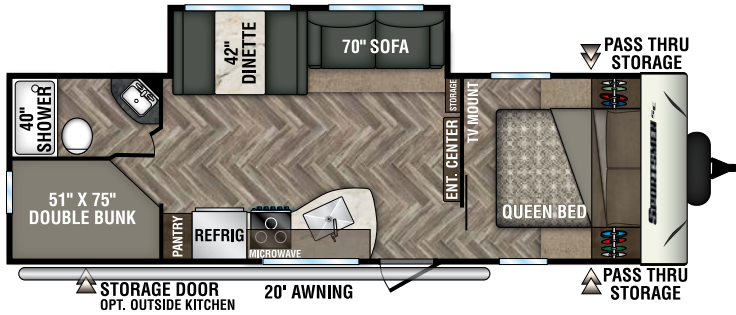
- Wider Pocket/Passage Interior Doors
- Color Accented Shower Walls
- Bathroom Shelf w/Towel Hooks

KZ CONVENIENCE
PACKAGE
(MANDATORY OPTION)
EXTERIOR

- Power Awning w/LED Light Strip
- Magnetic Catches for Baggage Doors
- Battery Disconnect Switch
- Omnidirectional HDTV Antenna w/Wi-Fi Prep
- LED Lights in Exterior Speakers

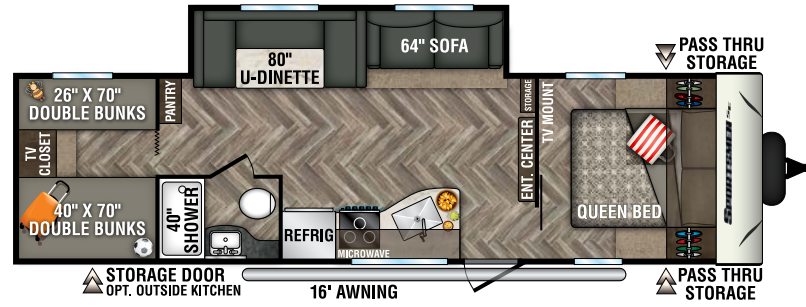
INTERIOR

- Residential-Grade Linoleum
- 10 CU FT Refrigerator 12V w/ Dual Temperature Control
- Stainless Steel Residential Kitchen Faucet
- Interior Control Switches on Overhead End Cabinet w/Convenience Center for Switches
- Dark Accent Trim on Corners/Entry Doors
- Electric Outlet in Bunk Area
- Stainless Steel Microwave



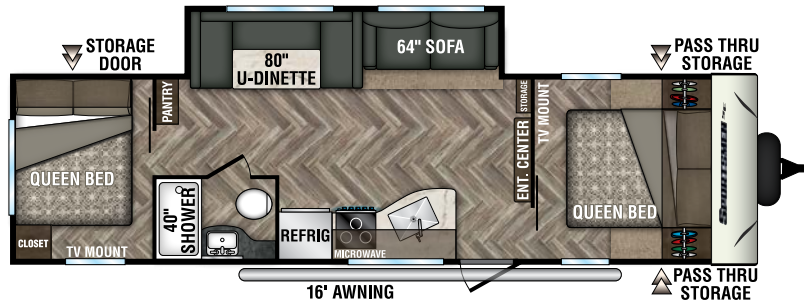
271BHSE

UVW - 5,720 | Exterior Length - 31' 3" | Sleeps 9



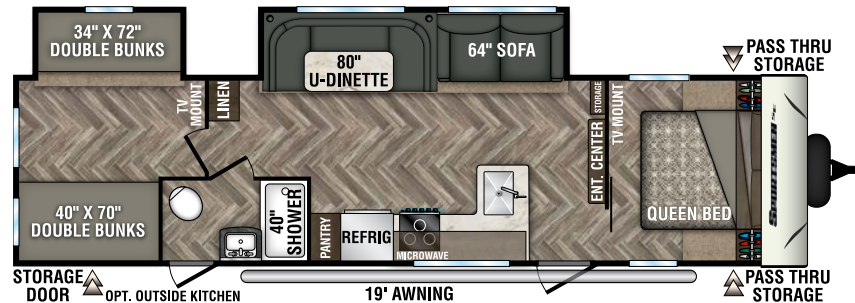
301BHSE *NEW*

UVW - 6,100 | Exterior Length - 33' 1" | Sleeps 10



301DBSE *NEW*

UVW - 6,010 | Exterior Length - 33' 1" | Sleeps 8



312BHSE

UVW - 7,110 | Exterior Length - 36' 1" | Sleeps 10

Sportsmen SE Travel Trailers	230BHSE	240FBSE	241RLSE	260BHSE	271BHSE	301BHSE	301DBSE	312BHSE
UVW (Unloaded Vehicle Weight)*	4,340	4,470	5,270	4,800	5,720	6,100	6,010	7,110
Dry Hitch Weight*	540	520	590	590	590	880	890	910
Dry Axle Weight*	3,800	3,950	4,680	4,210	5,130	5,220	5,120	6,200
NCC (Net Carrying Capacity)	2,660	2,530	1,730	2,200	1,280	1,900	1,990	1,690
GVWR	7,000	7,000	7,000	7,000	7,000	8,000	8,000	8,800
Interior Height	78"	78"	78"	78"	78"	78"	78"	78"
Exterior Height w/ A/C	10' 4"	10' 4"	10' 8"	10' 8"	10' 7"	10' 8"	10' 8"	10' 8"
Exterior Width	96"	96"	96"	96"	96"	96"	96"	96"
Exterior Length	25' 6"	26' 6"	28' 6"	28' 11"	31' 3"	33' 1"	33' 1"	36' 1"
Refrigerator (cu. feet)	10	10	10	10	10	10	10	10
Water Heater Cap. (gal. G/E w/DSI)	6	6	6	6	6	6	6	6
Fresh Water Cap. (gal.)	40	40	40	40	40	40	40	40
Waste Water Cap. (gal.)	32	32	32	32	32	32	32	32
Gray Water Cap. (gal.)	32	32	32	32	32	32	32	32
LP Gas Cap. (lbs.)	40	40	40	40	40	40	40	40
Furnace BTUs (1,000s)	20	30	30	30	30	30	30	30
Tire Size	14"	14"	14"	14"	14"	15"	15"	15"
Awning	14'	14'	17'	15'	20'	16'	16'	19'

*This weight reflects the rolling average unit weight for each model. Your trailer weight will vary according to optional equipment.

INTERIOR

SPORTSMEN LE

YOUR HOME AWAY FROM HOME

SPORTSMEN LE is the most popular series in our affordable Sportsmen travel trailer lineup, with numerous floorplans, all including slideouts and half with bunkhouse designs. A residential kitchen, all the best entertainment features, outside shower and stepped-up décor add to the appeal, and the flip-up entry step provides solid footing.

Let Sportsmen take care of the quality, so you can focus on quality time with your family.



WINDOW-VIEW KITCHENS include seamless counters, microwave with turntable, range hood with 12V light and exhaust fan, stainless steel sink with high-rise faucet, three-burner drop-in gas cooktop with glass cover that adds counter space, and built-in oven with LED-accent knobs.

301BHKLE | Hazelnut décor

RELAX IN COMFORT AND STYLE with the cozy optional 30-inch fireplace, LED TV, multimedia sound bar stereo with Bluetooth, HDMI and USB charging port, 6.5-inch speakers and cable hookup. Oversized corner double bunks with sturdy ladder, privacy curtain, double windows, electric outlet & storage below. (301BHKLE shown)



CHEERY & BRIGHT LED interior lighting, 64-inch sofa, residential-grade linoleum, and 12V dual USB port in living area. LE's 80-inch U-dinette accommodates everyone comfortably. (301BHKLE shown)



TWO-DOOR REFRIGERATOR Shown with optional 10 CU FT 12V refrigerator with temp controls, top freezer, deep door shelves and veggie bin. (301BHKLE shown)

READY FOR ACTION

SPORTSMEN LE TOY HAULERS come with the same great features as our LE travel trailers, but with space for your toys. They're offered in several awesome floorplans, sure to fit every lifestyle.



GREAT LE KITCHEN with seamless counters, stainless sink and high-rise faucet, drop-in cooktop with glass cover, oven & microwave.

200THLE | Hazelnut décor



VERSATILE LIVING

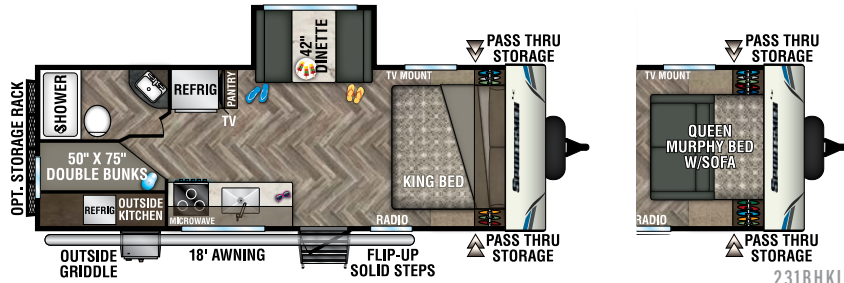
Spacious garage converts to living space, with 70-inch rolover sofa and freestanding table, windows with privacy covers, secure overhead storage and TV mount. (200THLE shown)



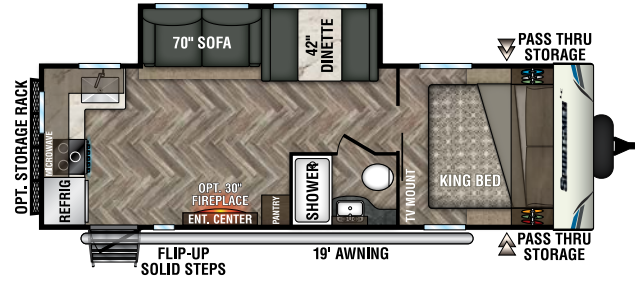
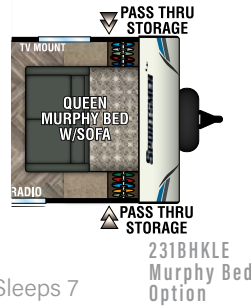
Choose living area, sleep options or garage space with residential-grade linoleum and secure floor tie-downs.



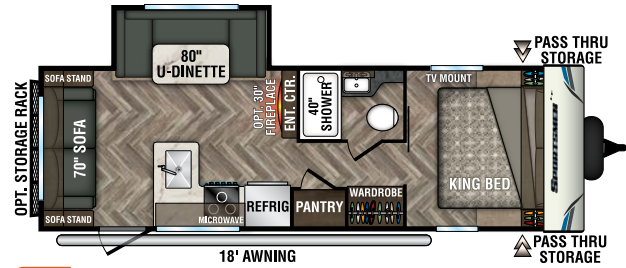
BEDROOMS include king-sized bed with plywood base in virtually all floorplans, functional storage, decorative wall treatments, and (2) 12V USB ports. (333KBKLE shown)



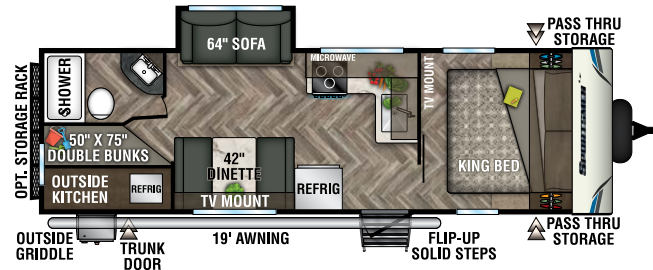
231BHKLE UVW - 5,040 | Exterior Length - 27' 5" | Sleeps 7



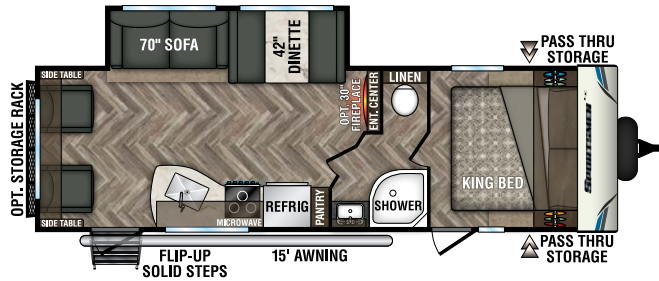
241RKLE UVW - 5,420 | Exterior Length - 28' 6" | Sleeps 5



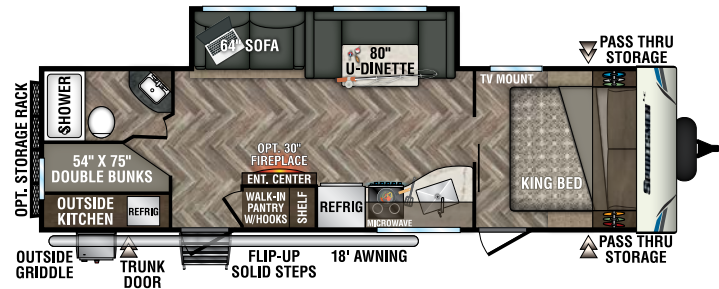
NEW 251RLLLE UVW - 5,360 | Exterior Length - 28' 11" | Sleeps 6



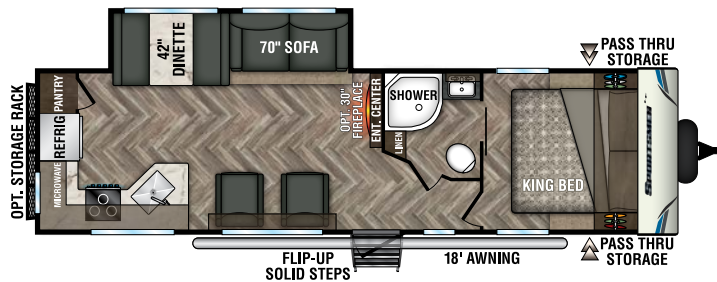
261BHKLE UVW - 5,500 | Exterior Length - 29' 10" | Sleeps 9



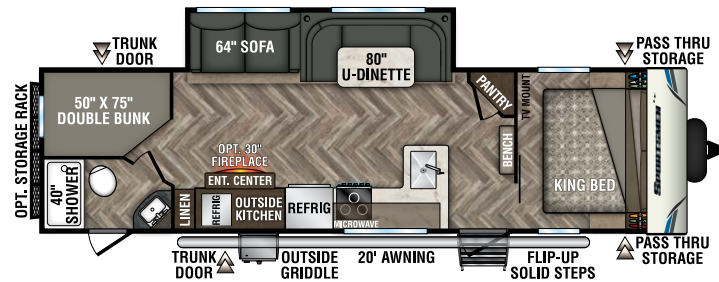
261RLLLE UVW - 5,880 | Exterior Length - 30' 6" | Sleeps 5



281BHKLE UVW - 6,400 | Exterior Length - 32' 5" | Sleeps 9



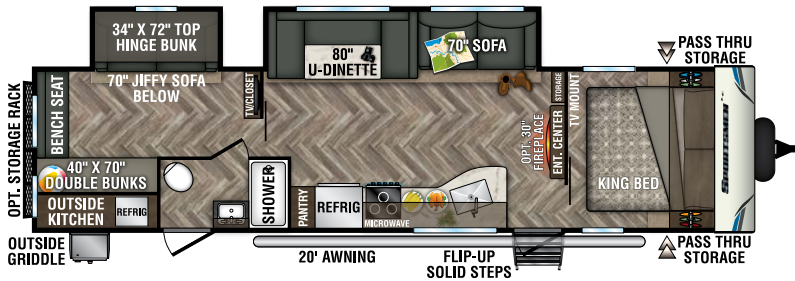
291RKLE UVW - 6,370 | Exterior Length - 33' 3" | Sleeps 5



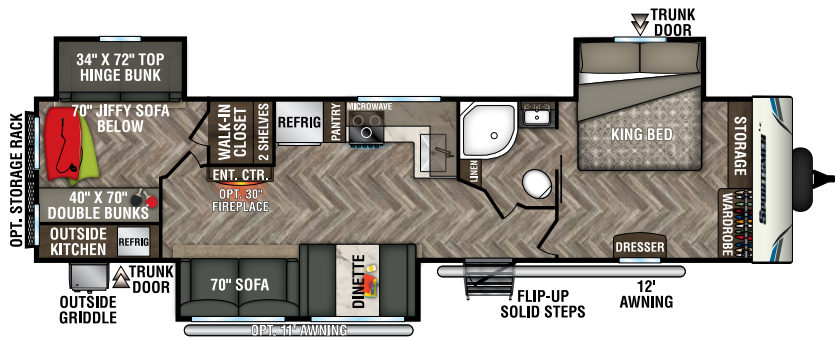
NEW 301BHKLE UVW - 6,460 | Exterior Length - 33' 11" | Sleeps 9



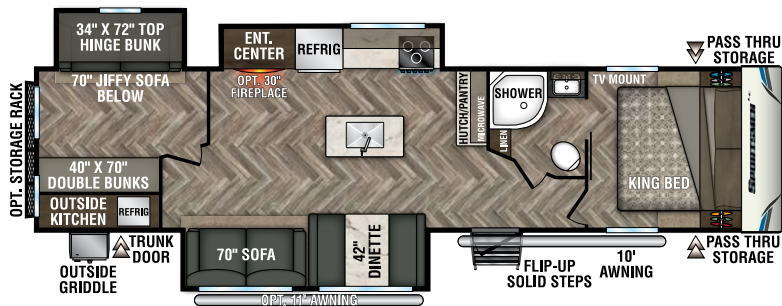
NEW 303KBLE UVW - 7,520 | Exterior Length - 34' 11" | Sleeps 5



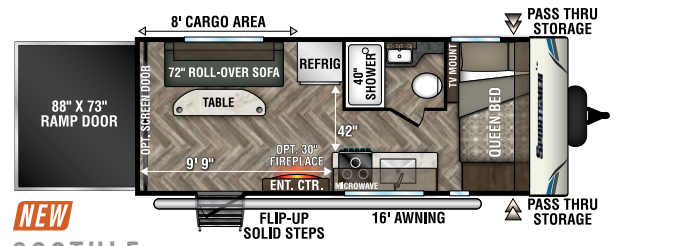
332BHKLE UVW - 7,350 | Exterior Length - 37' 7" | Sleeps 10



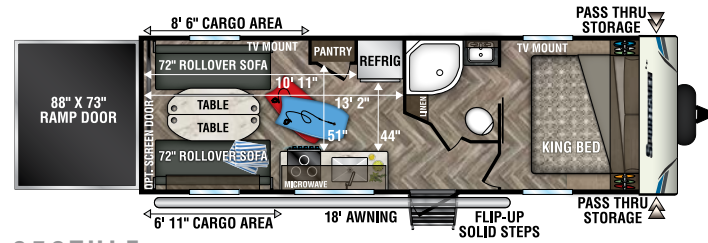
NEW 333KBLE UVW - 8,090 | Exterior Length - 38' 4" | Sleeps 9



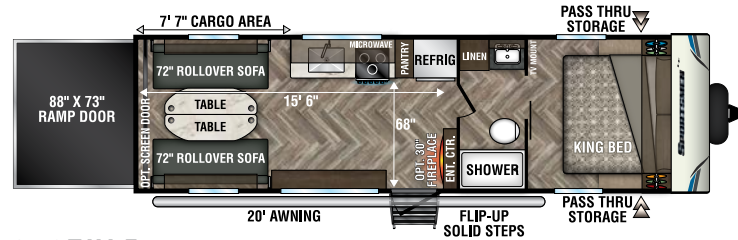
343BHKLE UVW - 8,160 | Exterior Length - 37' 10" | Sleeps 9



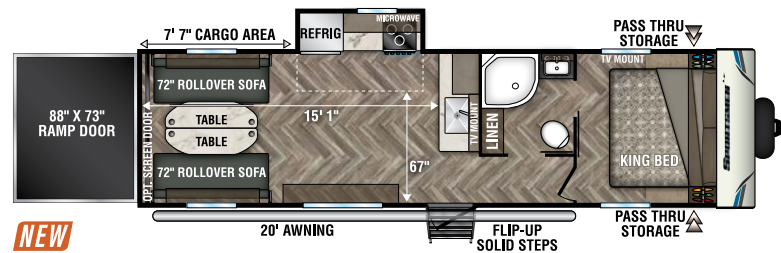
NEW 200THLE UVW - 4,560 | Exterior Length - 24' 1" | Sleeps 4



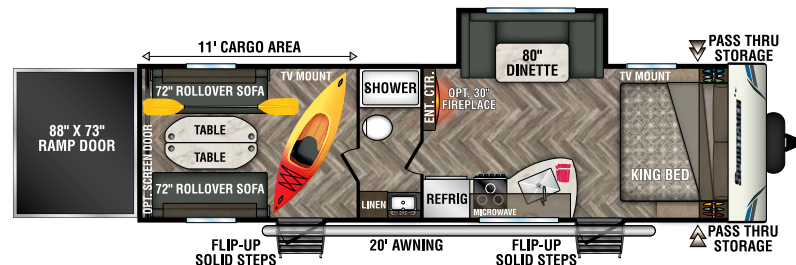
250THLE UVW - 5,240 | Exterior Length - 28' 11" | Sleeps 6



270THLE UVW - 5,490 | Exterior Length - 30' 8" | Sleeps 6



NEW 281THLE UVW - 6,110 | Exterior Length - 32' 11" | Sleeps 6



291THLE UVW - 6,410 | Exterior Length - 33' 8" | Sleeps 8

STANDARDS

- KZ Exclusive Tough Shield Exterior Metal
- 1-Piece, Seamless, Walk-on, Tufflex Roofing Material w/15-Year Warranty
- 3/8" Fully Walk-On Roof Decking
- Radius Truss Roof Rafters
- Awning w/Drip Rail & Spouts
- R-7 Insulation
- Radius Entry Door
- Extra-Large Radius Baggage Doors
- Tinted Windows
- Diamond Plate Rock Guard
- Rear Bumper w/Sewer Hose Storage
- (2) 20# LP Bottles
- 30 AMP Service
- Cable Hookup
- Digital TV Antenna w/Booster
- 13,500 BTU A/C
- Water Heater Bypass Kit
- 3-Burner Cooktop
- Range Hood w/12V Light & Exhaust Fan
- Microwave w/Turntable
- Large Overhead Cabinets
- Roller Ball Bearing Drawer Guides

- LED Interior Lighting
- Linoleum Throughout
- Mini Blinds
- Monitor Panel
- Power Vent in Bath
- Reversible Quilted Comforter
- Built-In Medicine Cabinet w/Mirror in Bath
- Shower Surround

OPTIONS

- 15,000 BTU A/C IPO 13,500 BTU A/C
- Low Pro 13,500 A/C IPO 13,500 (270TH & smaller)
- Low Pro 15,000 A/C IPO 13,500 (270TH & larger)
- 50 AMP Service w/2nd A/C Prep
- 2nd A/C (13,500 BTU)
- 30" Fireplace (N/A 231BHK, 261BHK, 250TH, 281TH)
- 39" LED TV (N/A 261BHK, 281TH)
- 32" LED TV (261BHK, 281TH)
- 24" LED TV (231BHK)
- Bedroom LED TV w/Inside/Outside Bracket
- F/S Dinette Table & 4 chairs IPO Dinette
- Wireless Backup Camera System - Observation
- Roof Ladder
- Climate Package (heated, insulated & enclosed underbelly)
- Flip Down 71" Storage Rack (N/A on Toy Haulers)
- Murphy Queen Bed w/Sofa (231BHK)
- 10 CU FT Refrigerator 12V IPO 7 CU FT Gas/Electric Refrigerator
- Aluminum Wheels
- Ramp Door Cables - Toy Haulers Only (required)
- Retractable Screen Wall (toy haulers only)
- Party Patio Package (railing) (toy haulers only)
- 11' Power Awning w/LED light strip (303KB, 333KBK, 343BHK)
- Ottoman w/Storage
- Tri-Fold HAB Sofa IPO Jackknife
- Theater Seating w/Heat & Massage IPO Jackknife

KZ ADVANTAGE PACKAGE

(MANDATORY OPTION) EXTERIOR

- New Aerodynamic Front Profile w/Smooth Metal Front
- Flip-Up Entry Step (main entry)
- Two-Toned Exterior Metal
- Friction-Hinged Entry Door w/Shade Prep
- Key-Alike Program for Entry & Baggage Doors
- Large Folding Grab Handle
- Power Tongue Jack
- Exterior Speakers
- Spare Tire & Carrier
- Nitrogen-Filled Tires
- (4) Stabilizer Jacks
- LP Bottle Cover
- Backup Camera Prep
- Solar Prep
- Outside Shower
- Outside Kitchen (select models)
- Leash Latch w/Bonus Beverage Opener

INTERIOR

- Jackknife Sofa w/Center Console & Bolster Arms

- Drop-In Cooktop w/Glass Cover & Oven
- (2) 12V USB Ports in Bedroom
- Plywood Bed Base
- Upper Bunk Windows (select models)
- Seamless Countertops w/Deep Undermount Stainless Steel Kitchen Sink
- Sink Cover
- Foot-Flush Toilet
- (2) 6.5" Interior Speakers
- Multi-Media Sound Bar Stereo w/ Bluetooth, HDMI and USB Charge
- Shower Skylight
- Bright White LED Light Strip above Slideout Room (main LR only)
- Dinette Doors w/36" Pullout Storage Bins
- Wider Pocket/Passage Interior Doors
- Pleated Shades in Slideout (LR)
- Color Accented Shower Walls
- Bathroom Shelf w/Towel Hooks
- King Bed Mattress

KZ CONVENIENCE PACKAGE

(MANDATORY OPTION) EXTERIOR

- Power Awning w/LED Light Strip
- Magnetic Catches for Baggage Doors
- LED Light in Storage Area
- Battery Disconnect Switch
- Omnidirectional HDTV Antenna w/Wi-Fi Prep
- Black Tank Flush
- LED Lights in Exterior Speakers

INTERIOR

- Residential Grade Linoleum
- 7 CU FT Gas/Electric Refrigerator w/Temperature Controls
- Stainless Steel Residential Kitchen Faucet
- Interior Control Switches on Overhead End Cabinet w/Convenience Center for Switches
- Dark Accent Trim on Corners/Entry Doors
- Electric Outlet in Bunk Area
- Stainless Steel Microwave

TRAVEL TRAILERS

TOY HAULERS

Sportsmen LE	231BHKLE	241RKLE	251RLLE	261BHKLE	261RLLE	281BHKLE	291RKLE	301BHKLE	303KBLE	332BHKLE	333KBKLE	343BHKLE	200THLE	250THLE	270THLE	281THLE	291THLE
UVW (Unloaded Vehicle Weight)*	5,040	5,420	5,360	5,500	5,880	6,400	6,370	6,460	7,520	7,350	8,090	8,160	4,560	5,240	5,490	6,110	6,410
Dry Hitch Weight*	700	540	730	670	720	720	700	770	1,180	880	1,310	1,000	700	950	1,040	1,020	1,240
Dry Axle Weight*	4,340	4,880	4,630	4,830	5,160	5,680	5,670	5,690	6,340	6,470	6,780	7,160	3,860	4,290	4,450	5,090	5,170
NCC (Net Carrying Capacity)	960	1,580	1,640	1,500	1,120	1,600	1,630	1,540	1,280	1,450	1,905	1,835	2,440	3,560	3,310	2,690	2,390
GVWR	6,000	7,000	7,000	7,000	7,000	8,000	8,000	8,000	8,800	8,800	9,995	9,995	7,000	8,800	8,800	8,800	8,800
Interior Height	78"	78"	78"	78"	78"	78"	78"	78"	78"	78"	78"	78"	78"	78"	78"	78"	78"
Exterior Height w/ A/C	10' 4"	10' 8"	10' 8"	10' 8"	10' 7"	10' 8"	10' 8"	10' 8"	10' 8"	10' 8"	10' 8"	10' 8"	10' 8"	10' 8"	10' 8"	10' 9"	10' 9"
Exterior Width	96"	96"	96"	96"	96"	96"	96"	96"	96"	96"	96"	96"	96"	96"	96"	96"	96"
Exterior Length	27' 5"	28' 6"	28' 11"	29' 10"	30' 6"	32' 5"	33' 3"	33' 11"	34' 11"	37' 7"	38' 4"	37' 10"	24' 1"	28' 11"	30' 8"	32' 11"	33' 8"
Refrigerator (cu. feet)	7	7	7	7	7	7	7	7	7	7	7	7	7	7	7	7	7
Water Heater Cap. (gal. G/E w/DSI)	6	6	6	6	6	6	6	6	6	6	6	6	6	6	6	6	6
Fresh Water Cap. (gal.)	40	40	40	40	40	40	40	40	40	40	40	40	40	40	40	40	40
Waste Water Cap. (gal.)	32	32	32	32	32	32	32	32	32	32	32	32	32	32	32	32	32
Gray Water Cap. (gal.)	32	64	32	64	32	64	64	32	32	32	32	32	32	32	32	32	32
LP Gas Cap. (lbs.)	40	40	40	40	40	40	40	40	40	40	40	40	40	40	40	40	40
Furnace BTUs (1,000s)	20	30	30	30	30	30	30	30	30	30	30	30	20	20	25	30	30
Tire Size	14"	14"	14"	14"	14"	15"	15"	15"	15"	15"	15"	15"	14"	15"	15"	15"	15"
Awning	18'	19'	18'	19'	15'	18'	18'	20'	12' w/11' opt.	19'	12' w/11' opt.	10' w/11' opt.	16'	18'	20'	20'	20'

*This weight reflects the rolling average unit weight for each model. Your trailer weight will vary according to optional equipment.

SPORTSMEN LE & LE TOY HAULER

EXTERIOR FEATURES



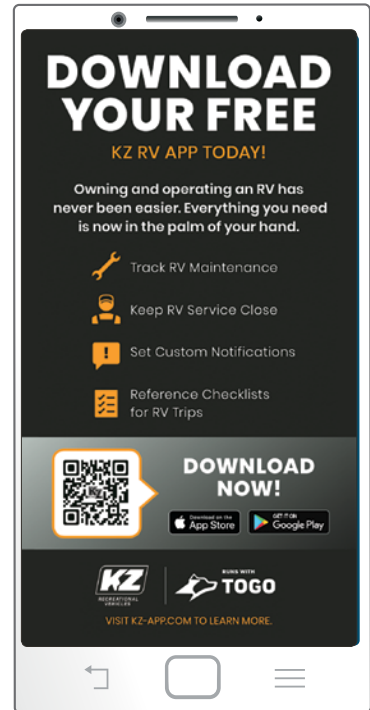
STANDARD FLIP-UP ENTRY STEP
and friction-hinge entry door with folding grab handle. Step deploys squarely to provide solid footing, and flips up in one easy motion.



ILLUMINATED POWER AWNING
Standard power awning with LED light strip. Optional second awning on select models.



Optional Climate Package adds insulation so you can extend the camping season, with a fully enclosed, insulated and heated underbelly to protect tanks and pipes (R-9 sidewalls, R-20 roof, and R-24 floor).



OUTSIDE SHOWER with hot and cold faucets.



WHEELS Nitrogen-filled tires and spare tire w/carrier are standard (aluminum wheels OPT).



HITCH LIGHT
Lighted power tongue jack



SOLAR CHARGE
Wired for solar



EXTERIOR SPEAKERS
with LED lighting



RETRACTABLE SCREEN WALL is optional, and pulls down like a garage door. And, host gatherings with the optional party patio package. (291THLE shown)



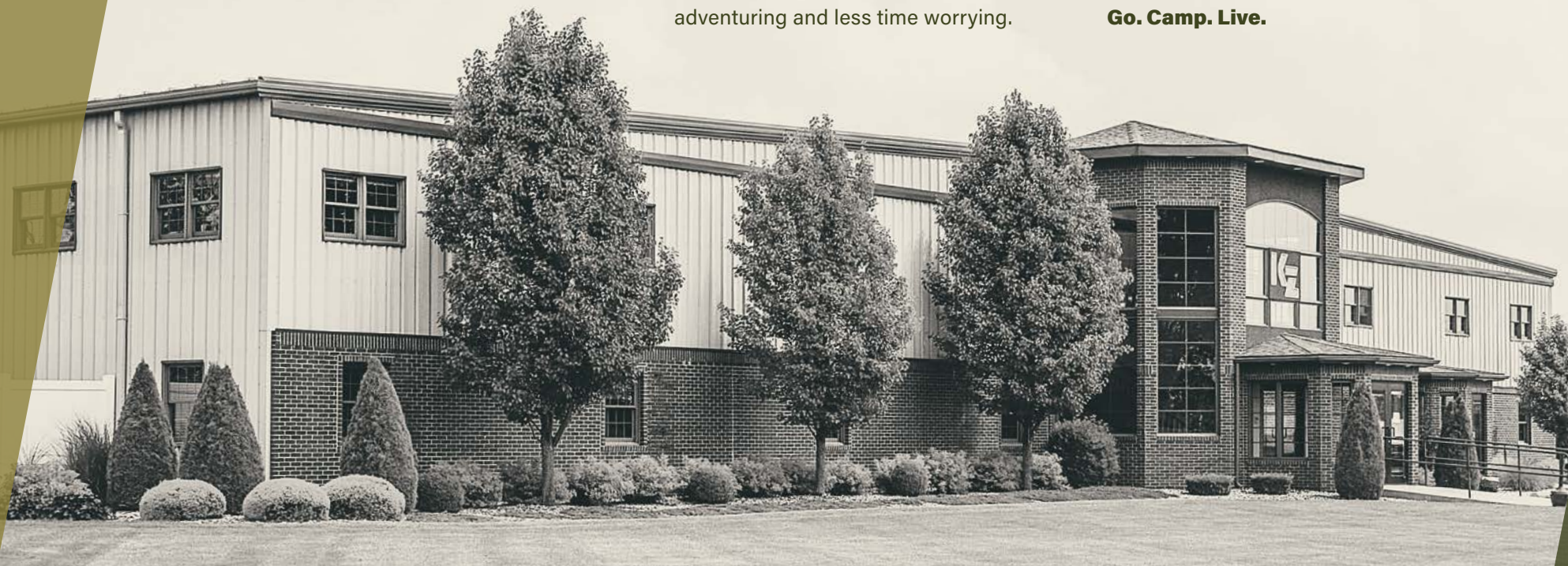
RECREATIONAL VEHICLES

HANDCRAFTED TO HIGH STANDARDS

In 1972, Sam King and Daryl Zook built a truck camper—and built a better way to camp. Since then we've built recreational vehicles with a focus on craftsmanship and quality, so you can spend more time adventuring and less time worrying.

When you hitch to a KZ Recreational Vehicle, you can expect adventure, good times, and old-world values. We care about your camping experience. Because your KZ is where the journey starts.

Go. Camp. Live.



Dealer:

