

CAMPING SIMPLIFIED

*S P I R I T*  
ULTRA LITE



**Coachmen**  
Recreational Vehicles  
A division of Forest River, Inc.

# SPIRIT ULTRA LITE

The Spirit Ultra Lite is the most user-friendly travel trailer on the market today.

# MAX BED STORAGE

- Storage like never before
- Mattress and frame lift to create a walk in storage area under the bed
- Four drawers, a laundry center, pillow/blanket storage, shoe storage, a padded seat and six "catch-all" openings





# CAMPING SIMPLIFIED

Spirit has the right features in the right places to make your camping experience more enjoyable. Well designed storage spaces provide easy access to everything. Traveling with your pet adds to the adventure. Spirit makes it easy and convenient to take your furry family members with you for fun and relaxation on the go.



Wireless Charging Station



Shower Buddy



Tool Center



"Easy Up" Quick Connect Stabilizer Jack Bit, with Handy Motion Activated Light



Kids Convenience Center with USB Port, 110V Outlet and Reading Light



Pass-through Fishing Rod Storage



Valuables Hutch (Some models)



Laundry Center



Sink Cover Storage



3379BH

Easy access  
pantry storage

# SETTING THE STANDARD FOR CONVENIENCE



Sofa Cup Holders



Bottle Opener



"Twice Cool" Dual Air Conditioning Duct System

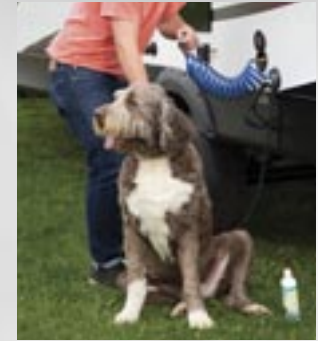


Motion Activated Floor Lights

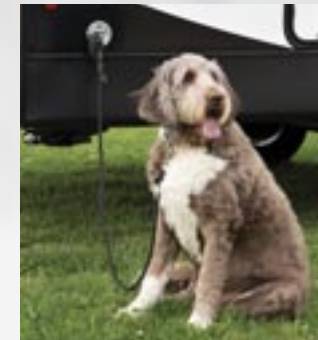


Lighted USB Ports

 Spirit was designed with pets in mind. Handy storage and outdoor features make taking a trip together hassle-free!



Exterior Dog Wash



Exterior Dog Leash Clip



Pet Center Plus (Some models)



Check out the Spirit Video



2963BH

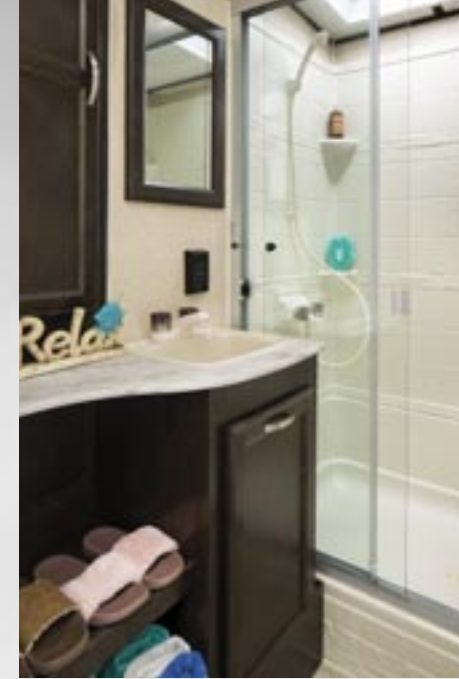
The family-friendly 2963BH offers trifold sofa sleepers, a U-shape dinette and oversized bunks.





### 3379BH

The 3379BH's open, well-lit interior is loaded with conveniences including a kitchen island, sofa sleeper and a family-friendly booth dinette.



Contemporary 30" x 50" shower with plenty of storage.



### 2963BH

Spacious living room

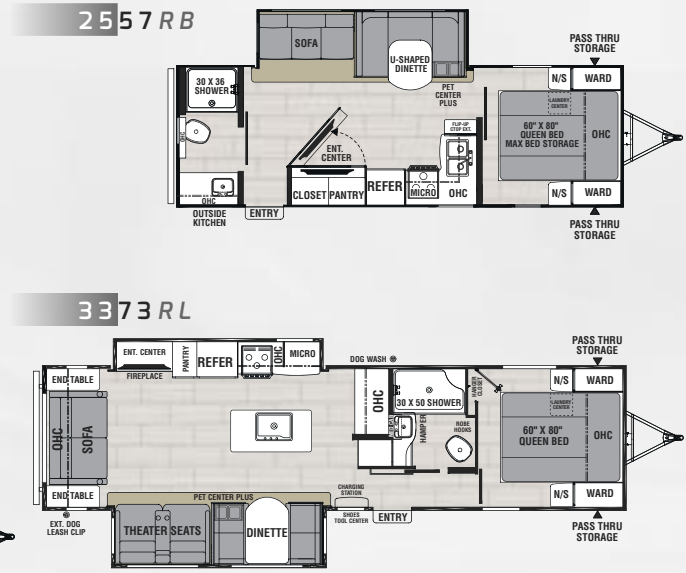
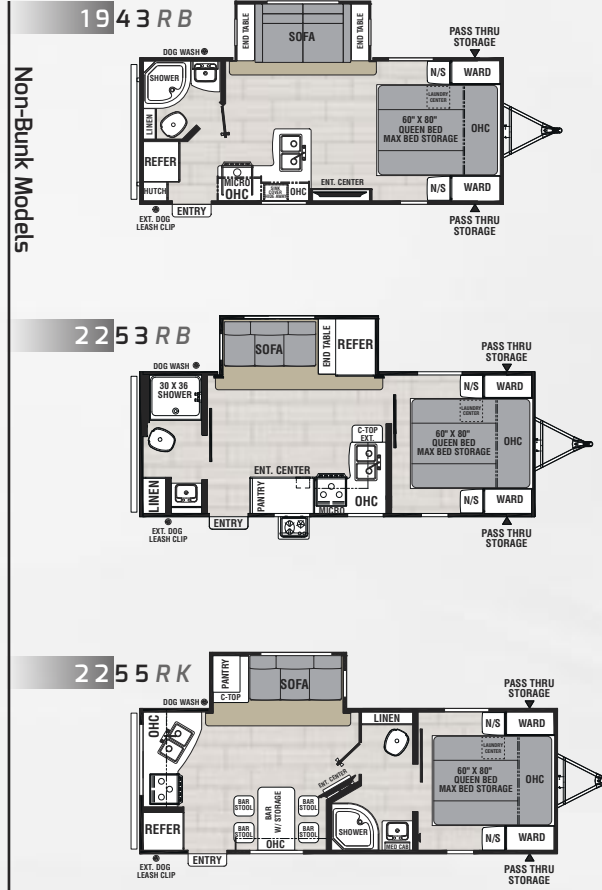
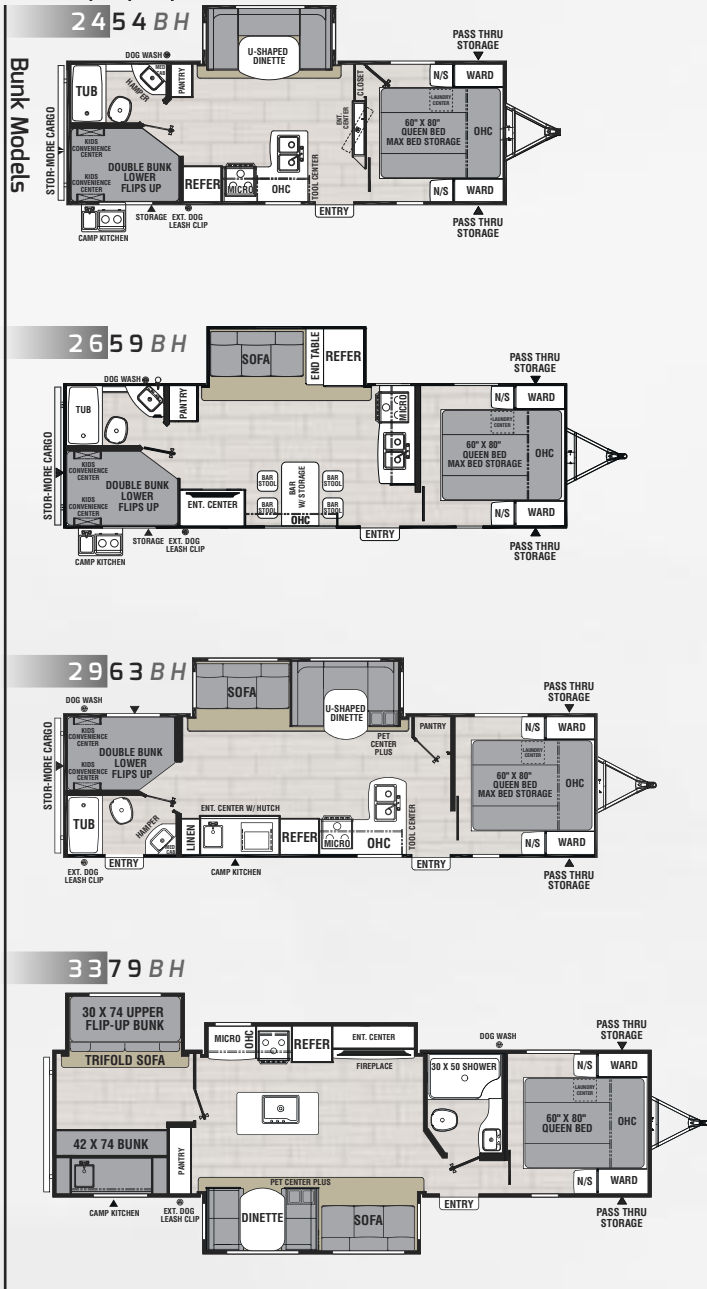


### 2255RK

Breakfast Bar

# Camping Simplified Model Naming

First 2 numbers = Approximate box length  
 Second 2 numbers = Approximate weight  
 Letters = Floor plan description



Models	Bunk Models				Non-Bunk Models				
	2454BH	2659BH	2963BH	3379BH	1943RB	2253RB	2255RK	2557RB	3373RL
Hitch Weight (lbs.)	728	850	760	1,094	520	534	728	648	940
Carrying Capacity (lbs.)	2,098	1,382	1,192	1,552	1,500	2,052	1,466	1,758	2,100
UVW (lbs.)	5,462	6,178	6,408	8,248	4,809	5,348	5,462	5,802	7,584
Ext. Length (Bumper to Hitch)	28' 9"	31' 8"	33' 11"	36' 11"	23' 10"	25' 11"	27' 2"	29' 3"	36' 6"
Ext. Height (Incl. A/C)	11' 1"	11' 1"	11' 1"	11' 4"	11' 1"	11' 1"	11' 1"	11' 1"	11' 4"
Awning Length	18'	20'	18'	10'	15'	15'	18'	18'	10'
Fresh Water Capacity (gal.)	49	49	49	49	49	49	49	49	49
Grey Water Capacity (gal.)	33	66	33	66	33	66	33	33	33
Waste Water Capacity (gal.)	33	33	33	33	33	33	33	33	33
Wheel Size	14"	14"	14"	15"	14"	14"	14"	14"	15"

Please refer to back cover for chart definitions



## Standard Features and Options

### Camping Simplified Features

- MAX BED STORAGE (N/A 3373 RL, 3379 BH)
- Motion Activated Floor Lights (Bedroom and bathroom)
- Store-More Cargo Center (Bunk models)
- Valuables Hutch (Some models)
- "Twice Cool" Dual Ducted Air Conditioning System
- Sofa Cup Holders
- Trash Can
- Lighted USB Ports
- Kids Convenience Center
- "Easy Up" Quick Connect Stabilizer Jack Bit
- Exterior Dog Leash Clip
- Exterior Fishing Pole Storage
- Motion Activated Pass Through Storage Light
- Bottle Opener
- Sink Cover Storage
- Pet Center Plus (Some models)

### Standard Features (Exterior)

- Magnetic Door Catches
- Drip Rails w/ Downspouts
- Heated and Enclosed Underbelly
- Cable / Satellite Prep
- Solid Entry Steps (N/A 1943RB)
- Extended Grab Handle

- Wireless Phone Charger
- Back-up Camera Prep
- Angled Stabilizer Scissor Jacks
- Black Tank Flush
- Exterior Speakers
- Wide Stance Axles
- Power Awning
- Solar Prep
- Dog Wash
- Front Rock Guard
- Power Tongue Jack
- Spare Tire
- Detachable Power Chord
- 20 lbs. LP Tanks
- Water Heater By Pass
- Aluminum Rims
- E-Z Lube® Axles

### Standard Features (Interior)

- Kitchen/Living Room
- Seamless Thermo Foil Wrapped Countertop
- Deluxe High Rise Faucet
- Double Bowl Stainless Steel Sink
- Stainless Steel Microwave
- Furrion Oven w/ 3 Burner Cook Top and Folding Glass Cover
- Under Dinette Storage Doors
- Refrigerator w/ Stainless Steel Insert (Most models)

- Tri Fold Sofa Sleeper (Most models)
- AM/FM/CD/DVD Bluetooth Stereo
- 12V Residential Refrigerator (3373 RL, 3379BH)
- Lighted USB
- Ducted Furnace
- 6 Gallon Gas/Electric Water Heater w/ 17.3 Gallon Recovery
- 55 Amp Power Converter
- LED TV
- Bunk Privacy Curtains
- 13.5 BTU Air Conditioner
- Pantry w/ Removable Shelves (Most models)
- 2 Interior Speakers
- Sink Covers

### Bathroom

- Designer Shower Curtain
- Shower Buddy
- Towel Hooks
- Tub Surround
- Power Vent
- Skylight
- Seamless Thermo Foil Wrapped Countertop

### Bedroom

- Bedside Night Stands
- Shirt Closets
- Lighted USB's
- Outlets
- Above Bed Shelf
- Designer Comforter
- Reading Lights
- 60" X 80" Queen Bed
- Laundry Center

### Construction

- Laminated, Aluminum Framed Floor
- Laminated, Aluminum Framed Sidewalls
- 3/4 Painted Fiberglass Front Cap w/ LED Strip Lights
- Azdel Composite Panels in place of Luan Plywood
- Full Walk-On 3/8" Roof Decking

- Rubber Roof Membrane
- 5" Trusses w/ Interior Vault
- Lumber Core Cabinet Stiles
- Pocket Screwed Cabinet Stile Joints
- Mortise and Tenon Cabinet Doors

### Popular Options

- 15K BTU Ducted A/C IPO 13.5K BTU
- 50 Amp Service, Wired and Prepped
- Second Bedroom A/C
- Theater Seating



Check out the Spirit Video



### Spirit Construction

1. Tinted, safety glass windows
2. Crowned trusses
3. 3/8" Roof decking
4. Tufflex PVC roof membrane
5. Azdel composite panels
6. Aerodynamic front profile
7. Dual 20 lb. LP gas tanks
8. Welded aluminum structure, fully laminated sidewalls and floor
9. Smooth exterior fiberglass skin
10. Aluminum framed openings
11. Fully enclosed, heated underbelly
12. Fully welded tubular aluminum floor structure
13. Congoleum Designer Carefree Resilient Flooring
14. Super-Lube® axle hubs
15. Stable-Ryd® spread axle design (Most models)
16. Nitrogen filled radial tires





**SPIRIT**  
ULTRA-LITE



# CAMPING SIMPLIFIED

## Coachmen Interactive Mobile Manuals


Download your Coachmen mobile app or visit our dynamic online manual to enhance your ownership experience. These interactive options provide incredible ease and insight into use, maintenance and enjoyment of your Coachmen product. Ranging from "How-To" videos, pictures and illustrations of various components, systems and features to fully searchable content and downloadable PDFs for individual component owner's manuals, answers are always just a click away.




423 N. Main Street • P.O. Box 30 • Middlebury, IN 46540  
To learn more about Coachmen RV and our products and see how Coachmen is making the easy life easier, visit [www.coachmenrv.com](http://www.coachmenrv.com)

**24/7 EMERGENCY  
ROADSIDE ASSISTANCE  
WITH VEHICLE PURCHASE\***


<p>TOWING JUMP-STARTS TIRE CHANGES FLUID DELIVERY LOCKOUT SERVICE</p>	<p>WINCH-OUT MOBILE MECHANIC TECHNICAL SUPPORT DEALER LOCATOR SERVICES</p>
---	--



**\*VALID FOR 1 YEAR FROM DATE OF PURCHASE**



**Learn More**  
Scan this barcode using a QR Reader on your smart phone to learn more about Forest River.



A Berkshire Hathaway company.

**GVWR (Gross Vehicle Weight Rating)** - is the maximum permissible weight of the unit when fully loaded. It includes all weights, inclusive of all fluids, cargo, optional equipment and accessories. For safety and product performance do NOT exceed the GVWR.

**GAWR (Gross Axle Weight Rating)** - is the maximum permissible weight, including cargo, fluids, optional equipment and accessories that can be safely supported by a combination of all axles.

**UVW (Unloaded Vehicle Weight)\*** - is the typical weight of the unit as manufactured at the factory. It includes all weight at the unit's axle(s) and tongue or pin and LP Gas. The UVW does not include cargo, fresh potable water, additional optional equipment or dealer installed accessories.

\*Estimated Average based on standard build optional equipment.

**CCC (Cargo Carrying Capacity)\*\*** - is the amount of weight available for fresh potable water, cargo, additional optional equipment and accessories. CCC is equal to GVWR minus UVW. Available CCC should accommodate fresh potable water(8.3 lbs per gallon). Before filling the fresh water tank, empty the black and gray tanks to provide for more cargo capacity.

\*\*Estimated average based on standard build optional equipment.

Each Forest River RV is weighed at the manufacturing facility prior to shipping. A label identifying the unloaded vehicle weight of the actual unit and the cargo carrying capacity is applied to every Forest River RV prior to leaving our facilities. The load capacity of your unit is designated by weight, not by volume, so you cannot necessarily use all available space when loading your unit.

All information contained in this brochure is believed to be accurate at the time of publication. However, during the model year, it may be necessary to make revisions and Forest River, Inc., reserves the right to make all such changes without notice, including prices, colors, materials, equipment and specifications as well as the addition of new models and the discontinuance of models shown in this brochure. Therefore, please consult with your Forest River dealer and confirm the existence of any materials, design or specifications that are material to your purchase decision. ©2019 Spirit by Coachmen, a Division of Forest River, Inc., a Berkshire Hathaway company. All Rights Reserved. 1/2020

**Your Spirit Dealer**



[www.ForestRiverBuyLocal.com](http://www.ForestRiverBuyLocal.com)