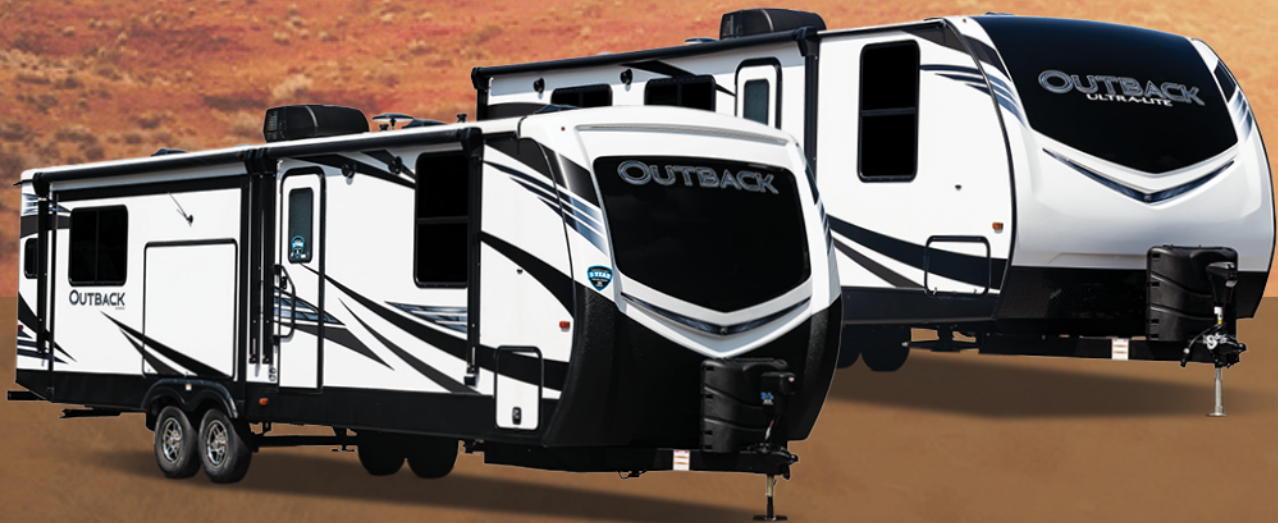


Outback

PREMIUM TRAVEL TRAILERS  
ULTRA-LITE TRAVEL TRAILERS

# ADVENTURE ELEVATED



# The ultimate ownership experience.

The goal of Keystone RV Company is to surprise and delight our owners at each and every touchpoint. We're happy when our campers are happy, and we are committed to providing the very best ownership experience in the industry.



**Keystone RV  
Company**

## 1 EASIER SHOPPING.

At Keystone, we make choosing an RV as easy as finding the Big Dipper on a dark summer night. With comprehensive online product information, Key Connect™ product advisors, and an unparalleled dealer network, we will help you select the perfect RV for your family's adventure.

## 2 INNOVATIVE THINKING.

The road's a nicer place when you have the industry's smartest features behind you. Keystone leads the pack in patented innovations that make our RVs safer, more comfortable, and easier to operate.

## 3 LONG HAUL QUALITY.

To keep you on the road, there are certain things we just won't build a Keystone RV without. Game-changing features like our Unified Wiring Standard, Tru-Fit™ five-point slide construction, and no-fail Tuf-Lok™ A/C duct joiners combined with exhaustive testing and inspections are some of the reasons why Keystone is able to offer our owners the industry's best 3-year limited structural warranty.

## 4 WORRY-FREE CUSTOMER SERVICE.

Wherever the road takes you, you're never too far from an authorized Keystone service center. We also offer live service assistance, ultra-fast parts shipping, online maintenance tips and tricks, and a single-point warranty claims policy. *That's* peace of mind.

## 5 KEYSTONE NATION.

When you choose Keystone, you become a part of one of the largest camping families in the country. We're Keystone Nation. A friendly community where people share photos, travel tips and amazing stories – all in the spirit of camaraderie and adventure. Come join us.

Experience the Outback lifestyle by visiting [#keystoneoutback](#)



# Keystone EXCLUSIVE Innovations

Year after year, Keystone RV's experienced team delivers Built For the Long Haul quality you expect and exclusive innovations you won't find anywhere else.



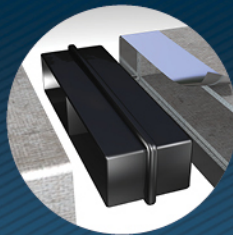
## 3-year Limited Structural Warranty, 1-year Limited Base Warranty

Every new Keystone RV comes with the industry's best three-year limited structural warranty AND a one-year limited base warranty. Ask your dealer, visit [keystonerv.com](http://keystonerv.com), or call Keystone Owner Relations for details.



### KeyTV™

No more connection guesswork or poor reception. KeyTV offers a game-changing, single point of control of over-the-air, cable, and satellite feeds. Visit us online for more information.



### Tuf-Lok™ A/C Duct Joiners

Crush resistant design securely joins ductwork and A/C units, and drastically reduces chilled-air leaks to boost cooling efficiency and comfort.



### Color-Coded Wiring Standard

Easy-to-trace circuits simplify electrical and entertainment system troubleshooting.



### In-floor Heating Ducts

Distributes heat evenly for greater comfort.



### 4G LTE and Wi-Fi prep

All Outbacks are equipped with a new Furrion® antenna that integrates 4G LTE and Wi-Fi with standard VHF/UHF/AM/FM reception.



### Tru-Fit™ Slide Construction

A more durable slide room design that minimizes functional motor and structural stress, resists leaking.

# OUTBACK



PREMIUM TRAVEL TRAILERS | ULTRA-LITE TRAVEL TRAILERS

## Designed to exceed expectations.

Uncommon comfort. Stunning features. Innovative amenities. At Keystone Outback, details matter. We are passionate about crafting each and every one of our full-sized and ultra-lite travel trailers to include inventive details that surprise and delight our owners. From small things, like new built-in pet kennels (in most models)—to big things, like larger windows that bring in the natural beauty of the outside. Outback continues to redefine the camping adventure. Outback: Adventure Elevated.

For more information, please visit [keystone.com/outback](http://keystone.com/outback)

### Convenience

Cutting-edge technology and amenities that make RV operation easier than ever.



**Optional Norco 7.3 BAL Leveling System**  
Easy setup with push of a button. Automatic and unassisted RV leveling.



**Norco Chassis**  
One of the industry's most durable lightweight frames, engineered entirely from HSLA steel with little to no welding.



**MCD Roller Shades**  
Upgraded shades provide ultimate comfort and convenience.



**Backsplash**  
Designer inspired backsplash provides residential feel and easy clean up.



**48" Fireplace**  
Sit back and relax indoors with the largest fireplace in the industry.



**Low-Profile Hood Vent**  
Provides more usable space while cooking.



**Pet Friendly Kennel**  
Easily accessible kennel doubles as a spacious under bed storage space.



**Outdoor Kitchen**  
Large refrigerator, overhead cabinet storage, cooktop, upgraded metal countertop and sink with hot and cold water.



**MORryde® Step Above™**  
Safe and secure main entry.



**Upgraded Power Center Blocks**  
Pop-up power blocks on all dinette/free standing table options.

### Luxury

An all new look with sleek appliances and top-line features that are made to stand out.



more product detail at  
[www.keystonerv.com/Outback](http://www.keystonerv.com/Outback)



## Interiors

The design process for Outback's new look involved constant owner input and re-imagining of the latest residential trends. Our interior décor reflects a cozy "modern farmhouse" style that will delight those in search of a bright, comfortable environment. We have laser-focused on every detail both obvious and not from our stunning new sliding barn doors and crafted color palette, to vaulted ceilings and Real Touch 3D high-definition wall coverings that offer natural texture and movement. We want our new design to make you feel as though you could switch on the TV, cozy up to the large fireplace, and feel right at home.



Modern Farmhouse

---

New designer-inspired décor with contemporary wood grain finishes.



All of the Comforts of Home

---

Inviting living space with upgraded furniture and large panoramic windows.





more product detail at  
[www.keystonerv.com/Outback](http://www.keystonerv.com/Outback)

## Outback | PREMIUM TRAVEL TRAILERS

- Durable automotive-grade painted front caps
- Drop-frame design on 300ML and 340BH models with 25% more pass-through storage
- All baggage storage doors with metal slam latches
- Rock Run pull-out storage racks on 328RL, 330RL, and 341RD models
- Ultra-stable and secure MORryde® Step Above™ steps on main entries (N/A 324CG)
- Extended living space with adjustable awnings on all models and a second awning on 328RL and 300ML models
- Convenient, integrated command center for power tongue jack and stabilizer jacks with optional auto-leveling upgrade
- All-new designer-inspired décor featuring contemporary finishes, forged-iron pendant lights above islands, solid surface countertops, tile backsplash and feature walls
- KeyTV™ Keystone's revolutionary single-source, easy-to-use controller for over-the-air, cable and satellite television
- 50" televisions (in most models)
- Stunning 48" fireplaces (N/A 335CG)
- More usable counter space with Furrion® flush-mounted glass cooktop and 21" oven
- Galley slide rooms redesigned with easy-to-clean flooring
- Pop-up power blocks with 110V and USB outlets on free-standing tables and booth dinettes
- 30" x 40" bedroom picture window
- 60" x 80" mattresses (300ML, 335CG, and 340BH models)
- Pet kennels built into all bed bases
- Digital thermostat



**Automotive Grade Front Caps**  
KeyGuard chip and rock protection.



**Furrion® Kitchen Appliances**  
Modern aesthetics and precise performance.

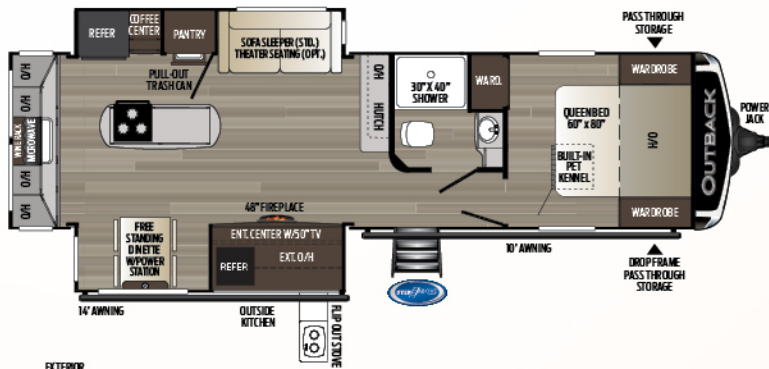


**King Bed Suite**  
Large king size mattress with overhead storage (324CG, 328RL, 330RL and 341RD models).

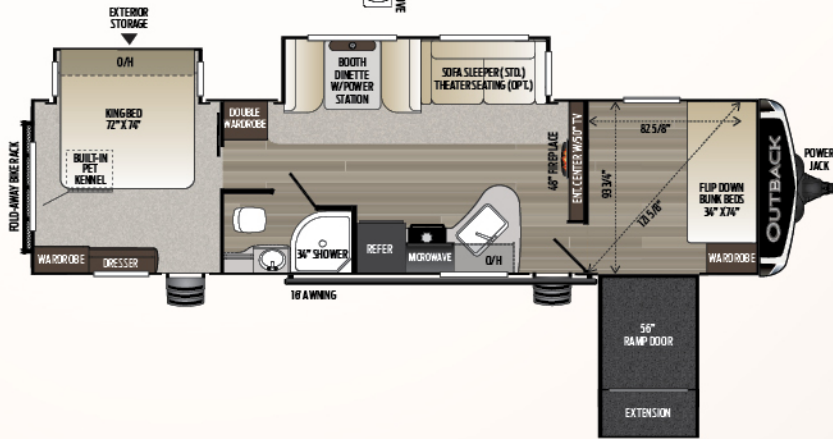


**Pendant Lighting**  
New pendant lighting adds a touch of designer inspired flare to your home-away from home.

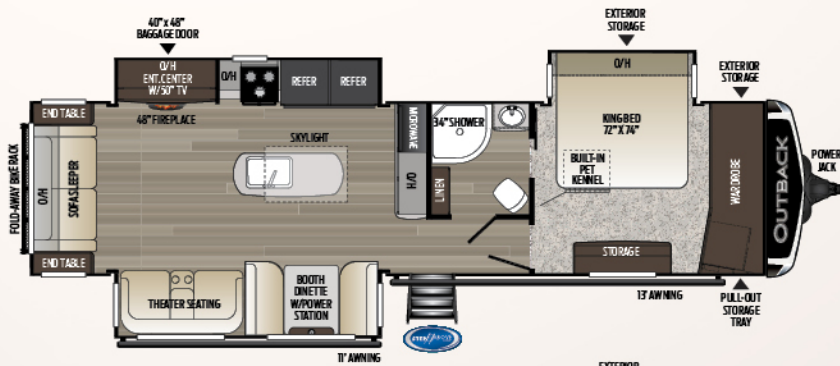




**300ML** | Mid-living room, two slides  
Weight: 8195 LBS. | Length: 34' 10"



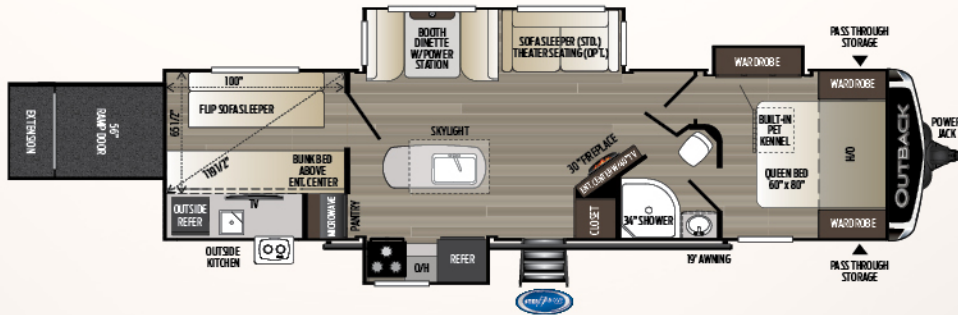
**324CG** | Cargo garage, two slides  
Weight: 8006 LBS. | Length: 37' 4"



**328RL** | Rear living, three slides-inc. bedroom  
Weight: 8718 LBS. | Length: 37' 10"

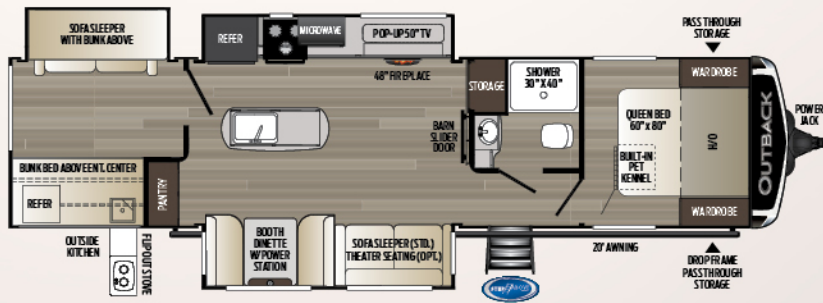


**330RL** | Rear living, three slides, outside kitchen  
Weight: 8803 LBS. | Length: 37' 10"



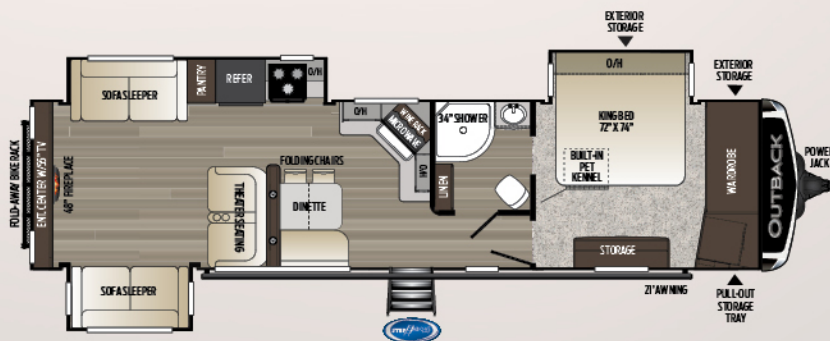
**335CG**

Cargo garage, two slides  
Weight: 8109 LBS. | Length: 37'



**340BH**

Three-slide bunkhouse, outside kitchen  
Weight: 8680 LBS. | Length: 38' 8"



**341RD**

Rear den entertainment, three slides  
Weight: 8525 LBS. | Length: 38' 8"



more product detail at  
[www.keystonerv.com/Outback](http://www.keystonerv.com/Outback)

## Outback | ULTRA-LITE TRAVEL TRAILERS

- Durable automotive grade painted front caps
- Ultra-stable and secure MORryde® Step Above™ steps on main entries (N/A 210URS, 240URS)
- Outdoor living space with adjustable awnings (all models)
- ASA backup camera prep
- Friction-hinge entry doors
- 33% larger, 30-pound propane tanks on all models
- 28% larger, 60-gallon fresh water tanks on all models
- All-new designer-inspired décor featuring contemporary finishes, modern backsplash
- KeyTV™ Keystone's revolutionary single-source, easy-to-use controller for over-the-air, cable and satellite television
- More usable counter space with Furrion's® flush-mounted glass cooktop and low-profile hood vent
- LED accent lighting in dinette
- Pull-out trash bins (221UMD and 280URD models)
- Pop-up power blocks with 110V and USB outlets on free-standing tables and booth dinettes (N/A 210URS, 240URS)
- Porcelain toilets
- 60" x 80" mattresses (N/A 210URS, 240URS)
- Pet kennels built into bed bases (N/A 210URS, 240URS)
- Laundry chutes (N/A 210URS, 240URS)
- Digital thermostats



**Automotive Grade Front Caps**  
KeyGuard chip and rock protection.

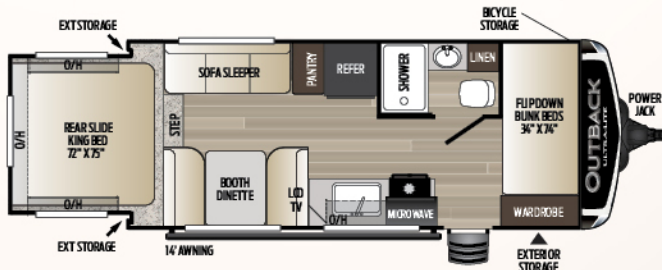


**Furrion® Kitchen Appliances**  
Modern aesthetic and precise performance.

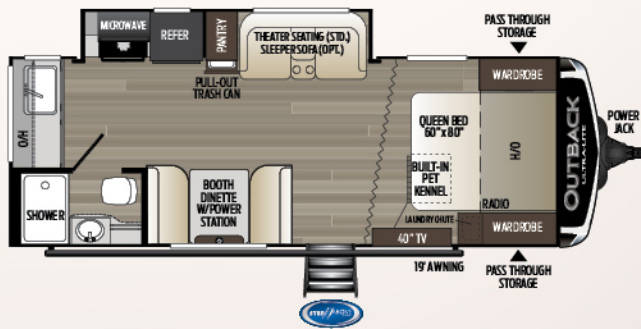


**60" x 80" Mattresses**  
Large queen size mattress with overhead storage (N/A 210URS and 240URS models).

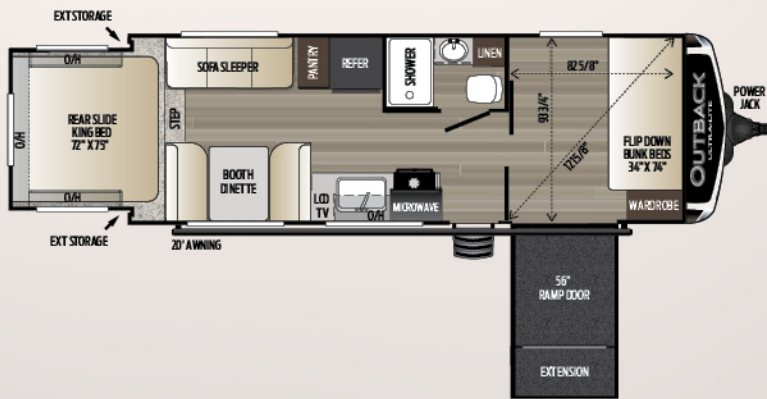
**Countertop with Undermount Sink and Pull-out Faucets**  
Residential undermount sink keeps water from getting underneath and pull-out faucet reaches all corners of the sink.



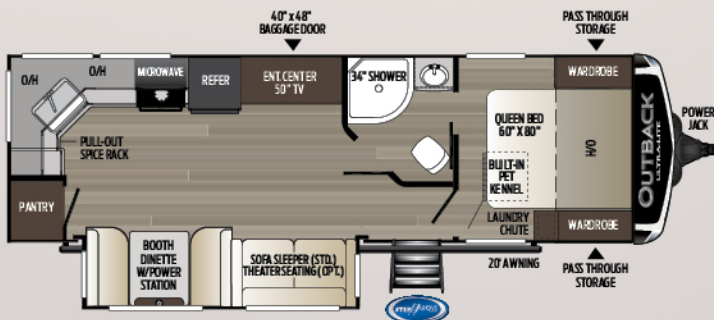
**210URS** | Double bunkhouse, rear bedroom slide  
Weight: 4475 LBS. | Length: 23'



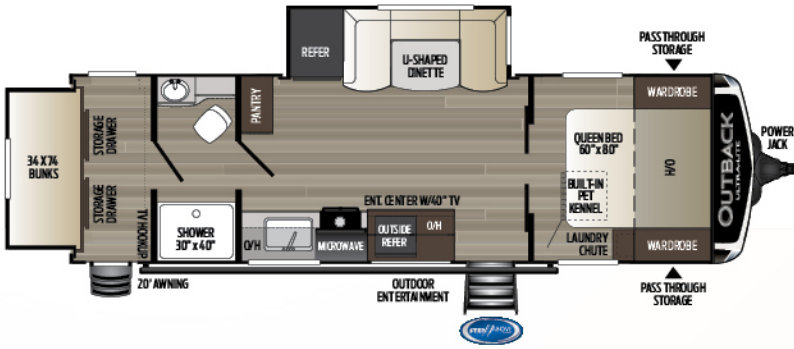
**221UMD** | Mid-dinette, rear bath  
Weight: 4925 LBS. | Length: 26'10"



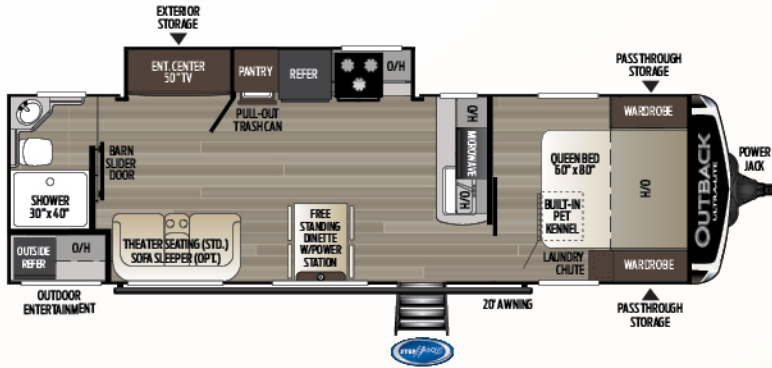
**240URS** | Cargo garage, rear bedroom slide  
Weight: 5155 LBS. | Length: 28'3"



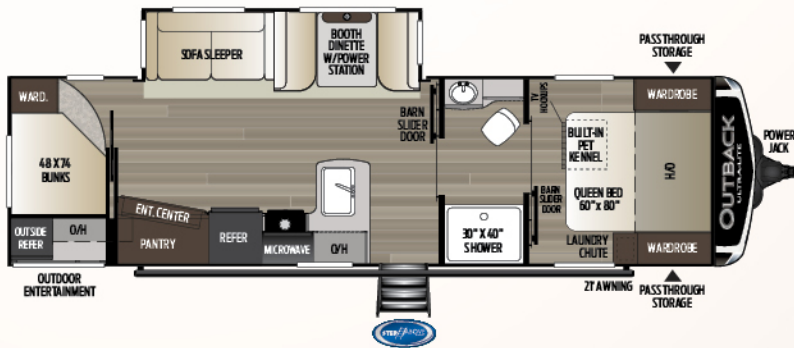
**260UML** | Mid-living room, rear kitchen  
Weight: 5605 LBS. | Length: 30'6"



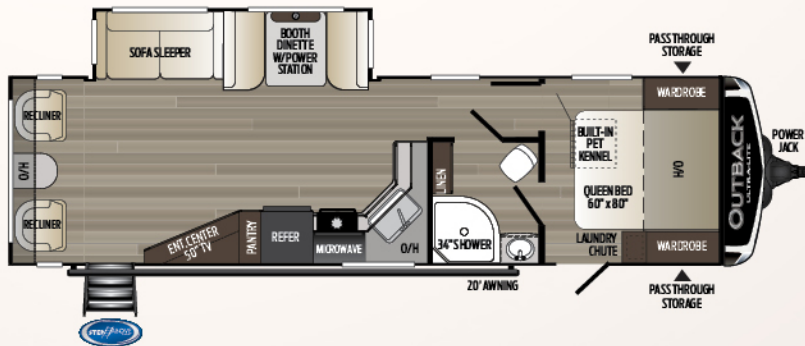
**261UBH** | Rear-slide bunkhouse  
Weight: 5830 LBS. | Length: 30' 11"



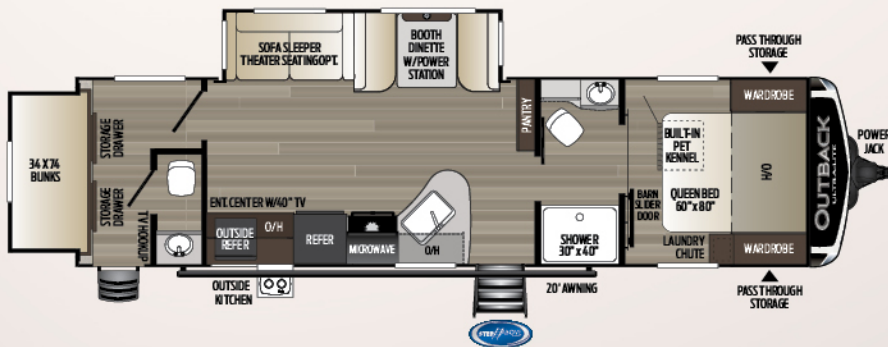
**280URB** | Rear bath, mid-living, outside entertainment  
Weight: 5815 LBS. | Length: 32' 6"



**291UBH** | Rear double bunk, outside kitchen  
Weight: TBD | Length: TBD



**299URL** | Rear living, dual entry bath  
Weight: 5998 LBS. | Length: 33' 11"



**301UBH** | Rear-slide bunkhouse, 1/2 bath  
Weight: 6975 LBS. | Length: 34' 9"

### FULL-PROFILE PREMIUM TRAVEL TRAILERS

MODEL	WEIGHT	CARRYING CAPACITY	HITCH WEIGHT	FRESH WATER	WASTE WATER	GRAY WATER	LPG	LENGTH*	WIDTH	HEIGHT	AWNING
300ML	8195	1305	1020	60	38	76	60	34' 10"	8'	11' 4"	14'/10'
324CG	8006	2494	870	60	38	76	60	37' 4"	8'	11' 4"	16'
328RL	8718	1782	1075	60	38	76	60	37' 10"	8'	11' 4"	11'/13'
330RL	8803	1697	1100	60	38	76	60	37' 10"	8'	11' 4"	13'
335CG	8109	2391	1180	60	38	76	60	37'	8'	11' 4"	19'
340BH	8680	1820	1040	60	38	76	60	38' 8"	8'	11' 4"	20'
341RD	8525	1975	1120	60	38	76	60	38' 8"	8'	11' 4"	21'

### ULTRA-LITE PREMIUM TRAVEL TRAILERS

MODEL	WEIGHT	CARRYING CAPACITY	HITCH WEIGHT	FRESH WATER	WASTE WATER	GRAY WATER	LPG	LENGTH*	WIDTH	HEIGHT	AWNING
210URS	4536	1964	485	60	30	30	60	23' 0"	8'	10' 7"	14'
221UMD	4935	2265	600	60	30	30	60	27' 0"	8'	10' 7"	19'
240URS	5081	2509	590	60	30	30	60	28' 3"	8'	10' 7"	20'
260UML	5605	1995	600	60	30	60	60	30' 6"	8'	10' 7"	20'
261UBH	5970	1630	710	60	30	60	60	30' 11"	8'	10' 7"	20'
280URB	5980	1785	650	60	30	60	60	32' 6"	8'	10' 7"	20'
291UBH	TBD	TBD	TBD	TBD	TBD	TBD	TBD	TBD	TBD	TBD	TBD
299URL	5998	1692	695	60	30	60	60	33' 11"	8'	10' 7"	20'
301UBH	7090	2410	835	60	60	60	60	34' 9"	8'	10' 7"	20'

DISCLAIMER: Product information is as accurate as possible as of the date of publication of this brochure. All features, floor plans, and specifications in this brochure are subject to change without notice. Please also consult Keystone's web site at [www.keystonerv.com](http://www.keystonerv.com) for more current product information and specifications. Tow Vehicle Disclaimer. CAUTION: Owners of Keystone recreational vehicles are solely responsible for the selection and proper use of tow vehicles. All customers should consult with a motor vehicle manufacturer or their dealer concerning the purchase and use of suitable tow vehicles for Keystone products. Keystone disclaims any liability or damages suffered as a result of the selection, operation, use or misuse of a tow vehicle. KEYSTONE'S LIMITED WARRANTY DOES NOT COVER DAMAGE TO THE RECREATIONAL VEHICLE OR THE TOW VEHICLE AS A RESULT OF THE SELECTION, OPERATION, USE OR MISUSE OF THE TOW VEHICLE. \*Length is defined as the distance from the centerline of hitch pin/coupler to rear bumper of trailer. Please review owner's manual prior to purchase for more information on service warranties, extended use, towing and maintenance. Owner's manuals can be found at [keystonerv.com](http://keystonerv.com).

### PREMIUM OUTBACK TAVEL TRAILERS

#### COMFORT PACKAGE (MANDATORY)

50 AMP service/wire and framed for 2nd A/C, 15K BTU ducted air conditioner, 35K BTU high capacity furnace, detachable power cord, backup camera prep, solar prep, quick recovery water heater, hand glazed ash cabinetry, solid surface countertops, AM/FM/CD/DVD player (Bluetooth enabled), luxury appliances, 48" fireplace (30" on 335CG), 8 cu. ft. refrigerator (two 8 cu. ft. refrigerators in 328RL only), 21" flush mount stove, high-rise faucet w/pull-out sprayer, trash can, utensil rack, coat hooks (most models), tri-fold sofa, MCD roller shades, LED puck lights, MaxStor dinette w/LED directional lighting (N/A 330RL), carbon monoxide detector, residential innerspring mattress with bedspread

#### PREMIUM PACKAGE (MANDATORY)

Polar White high gloss exterior fiberglass, full fiberglass front cap w/rock guard, slam pass-thru baggage doors, rear max cargo rack, LP cover, MORryde steps, black tank flush, radial tires w/15" spare, aluminum wheels, LED lit power awning, XL entry handle, omni directional antenna, exterior convenience utility center, heated and enclosed underbelly w/ designated heat duct to subfloor, moisture barrier floor enclosure, hi-density roof insulation w/attic vent, walk-on roof

#### OPTIONS

7.3 BAL leveling system, free standing dinette, theater seating (300ML, 324CG, 335CG, 340BH), 2nd A/C

### ULTRA-LITE OUTBACK TAVEL TRAILERS

#### ULTRA-LITE EXTERIOR GROUP (MANDATORY)

Polar White colored fiberglass, painted front cap, laminated aluminum framed sidewalls, omni directional TV antenna, satellite prep, battery disconnect, cable TV, radial tires w/ spare, stabilizer jacks, black tank flush, easy lube axles, quick connect LP line, friction hinge entry doors, electric awning w/LED lights, heated and enclosed underbelly w/designated heat duct to subfloor, moisture barrier floor enclosure, exterior speakers, magnetic door catches, aluminum rims, 15K A/C, 6 gallon gas/electric DSI water heater, 30 lb. LP tanks w/cover

#### ULTRA-LITE INTERIOR GROUP (MANDATORY)

AM/FM/CD/DVD player (Bluetooth enabled), ceiling speakers, 21" oven w/glass top, LED HD TV, skylight in bath, ducted A/C, microwave, 8 cu. ft. refrigerator, USB charging ports, tri-fold sleeper sofa (jack-knife sofa - 210UMD, 240URS), MaxStor dinette, high-rise faucet w/pull-out sprayer, pleated shades, luxury appliances, hand glazed ash cabinet doors, porcelain toilet, LED lights, laundry chute (N/A 210UMD, 240URS), 35K BTU high capacity furnace, built-in pet kennel, sink cover, digital thermostat

#### ULTRA-LITE OPTIONS

Free-standing dinette (221UMD, 299URL), Theater seating (221UMD, 260UML, 280URB, 301UBH), 50 AMP service/wire and braced for 2nd A/C (N/A 210, 221, 240), 2nd A/C (N/A 210, 221, 240)

## STANDARDS AND OPTIONS

TT Premier Travel Trailers  
ULT Ultra-Lite Travel Trailers

	TT	ULT
<b>LIVING AREA</b>		
Upgraded furniture package	●	●
Pre-drilled and screwed hand-glazed ash cabinetry	●	●
Large panoramic windows	●	●
Vinyl flooring	●	●
40"/50" HDTV (most models)	●	●
MCD roller shades*	●	
Pleated shades		●
Vaulted ceiling	●	
USB charging port	●	●
LED lighting and (2) LED floor lights	●	●
Fireplace	●	
<b>KITCHEN</b>		
Deep, single basin sink with 3" drains	●	●
Trash can storage*	●	●
Two door 8 cu. ft. refrigerator	●	●
High-rise faucet w/pull-out sprayer*	●	●
Utensil tray	●	●
3-burner range with oven and microwave*	●	●
Upgraded pressed membrane countertops		●
Solid surface countertops*	●	
Skylights over islands	●	
<b>BEDROOM</b>		
Deluxe innerspring mattress	●	●
TV hook-up	●	●
Jalousie windows for maximum ventilation	●	●
USB charging port	●	●
Built-in pet kennel storage	●	●
<b>BATHROOM</b>		
Power roof vent and skylight over tub	●	●
Porcelain foot-flush toilet	●	●
Tub surround*	●	●
Radius shower ( 0B- N/A 300ML, 340BH) (0BUL- 260, 299)	●	●
<b>APPLIANCES</b>		
AM/FM/CD stereo w/DVD player, MP3 hookup and Bluetooth enabled (N/A in 210URS, 240URS)	●	●
Two door 8 cu. ft. refrigerator (black)	●	●
Range with oven and microwave (3 burner)*	●	●
6-gallon gas/electric DSI water heater w/quick-recovery capacity of 16.2 gallons per hour	●	●
15,000 BTU AC wall thermostat and 35,000 BTU furnace	●	●
<b>EXTERIOR</b>		
Painted fiberglass front cap w/LED strip lights and rock guard	●	●
Polar White fiberglass with black framed, tinted safety glass windows	●	●
Black tank flush	●	●

	TT	ULT
Assist entry grab handle	●	●
Heated enclosed underbelly	●	●
MORryde® steps (N/A on 210, 240, 324CG models)	●	●
30 lb. LP bottles	●	●
Backup camera prep (n/a on 210, 240 models)	●	●
Double welded dual battery brackets with battery disconnect	●	●
Exterior speakers	●	●
Dexter® E-Z Lube® axles	●	●
Exterior quick connect LP hook-up	●	●
Stabilizer jacks (4) with power tongue jack		●
Power stabilizer jacks with auto-leveling option	●	
Satellite prep	●	●
Slam-latch baggage doors with magnetic door holders	●	
Rear ladder (N/A 335CG)	●	
Water docking station	●	●
Friction-hinge entry door	●	●
Rear max cargo rack	●	
Welded aluminum walls with R-7 solid block foam insulation	●	●
<b>ROOF</b>		
5" radius, vaulted galvanized steel, tapered trusses on 16" centers	●	
Galvanized steel, trusses on 16" centers		●
3/8" roof decking	●	
One-piece TPO roof (tan)	●	●
R-14 equivalent blanket insulation	●	●
<b>FLOOR</b>		
2" welded aluminum laminated floor with R-10 equivalent block foam insulation	●	●
Wrapped vapor barrier	●	●
Polypropylene heated underbelly (encloses tanks and valves)	●	●
<b>CHASSIS</b>		
Powder coated NXG frame from BAL w/leaf spring equalizing suspension system	●	●
Dexter E-Z Lube® axles with 10" electric brakes	●	●
15" radial tires on aluminum wheels with spare* (301UBH)	●	
14" radial tires on aluminum wheels with spare		●
<b>UTILITIES</b>		
55-AMP converter	●	●
30 lb. LP bottles with auto changeover	●	●
Furrion 4G LTE and Wi-Fi ready	●	●
50-AMP shore power line	●	
Optional 50-AMP shore power line 260, 280, 299, 301		●
Detachable 30-AMP shore power line		●
Fire extinguisher, carbon monoxide detector, LP lead detector, smoke detector	●	●
Breakaway switch and safety chains	●	●
Manual slide backup on all electric slide-outs	●	●
RVIA	●	●

BUILT FOR THE LONG HAUL



PRINT 12.2018

