

ADMIRAL

2019 CLASS A GAS



HOLIDAY RAMBLER®

[holidayrambler.com](http://holidayrambler.com)



# It's Time to Take Charge

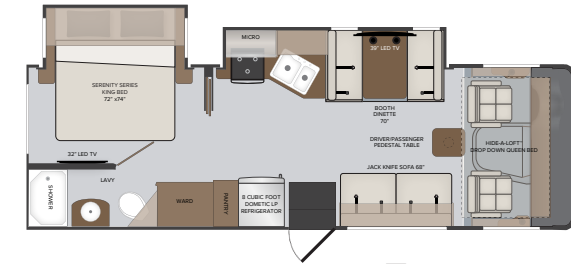
When it comes to the 2019 Admiral, compromising convenience and comfort isn't something you'll need to worry about. Completely redesigned for 2019, the Admiral is a Class A Gas motorhome perfect for first-time RVers who want high-end features, like a Hide-A-Loft™ drop-down queen bed, 50" exterior TV, low-profile, modern front cap, multiple USB ports, and a Bluetooth® stereo system in the bedroom.

With the Admiral's 2019 overhaul, you'll also find new modern décor packages and styling options, as well as floorplan-specific features like a double door 8-cu. ft. refrigerator (28A), stackable washer/dryer prep (35R), and even an exterior kitchenette on the 29M. So, take your pick from four spacious floorplans, start the 6.8L Triton V10 engine, then make your way to wherever the road calls you. No matter where it is, you'll be ready with the Admiral.

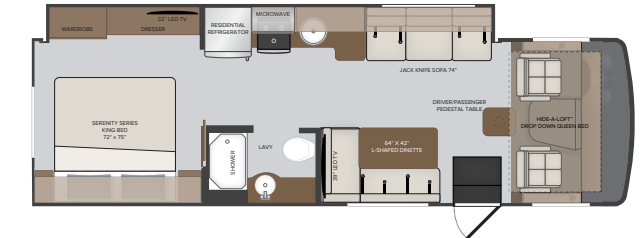


ADMIRAL 29M  
EXPRESS GRAPHICS

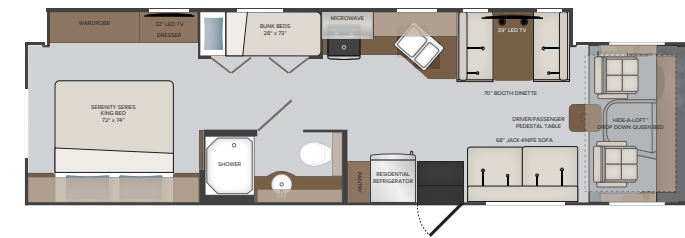
## ADMIRAL FLOORPLANS



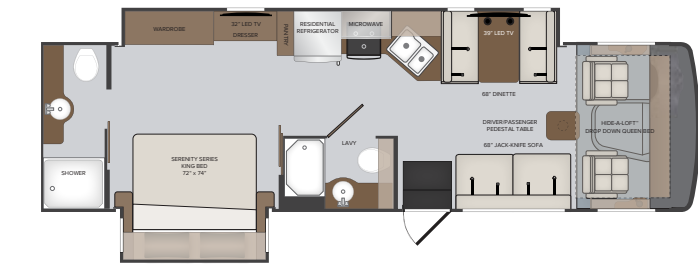
**28A** | OPTIONS:  
096, 194, 230, 605, 756, 953



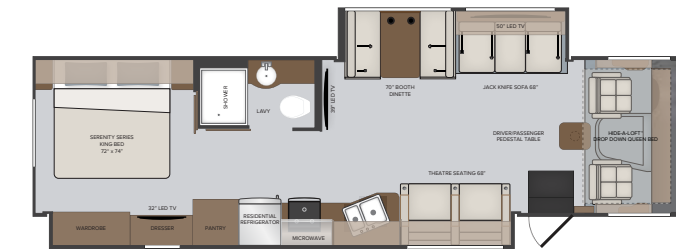
**29M** | OPTIONS:  
096, 230, 331, 605, 756, 953



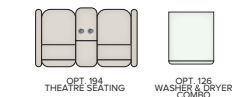
**34J** | OPTIONS:  
096, 194, 230, 605, 756, 953



**32S** | OPTIONS:  
096, 194, 230, 331, 605, 756, 953



**35R** | OPTIONS:  
096, 126, 230, 605, 756, 953



### AVAILABLE OPTIONS

- 096 King Stationary Satellite System w/Dish Network Receiver(s)
- 126 Washer and Dryer Combo
- 194 Theatre Seating (28A, 32S, 34J)
- 230 Roof Vent Rain Covers
- 331 5.5 Generator w/Dual A/C (29M, 32S)
- 605 Dual Glazed Windows
- 756 Suspension Upgrade
- 953 Power Driver Seat



ADMIRAL 29M  
CHATEAU INTERIOR WITH  
DARK CHERRY HIGH-GLOSS CABINETRY

ADMIRAL 29M  
CHATEAU INTERIOR WITH  
DARK CHERRY HIGH-GLOSS CABINERY



THEATRE SEATING OPTION  
BROWNSTONE INTERIOR WITH  
WHISPERING WIND HIGH-GLOSS CABINERY



Visit our website  
for more photos  
and to build your  
2019 Admiral  
at [holiday Rambler.com](http://holiday Rambler.com).



You want every single advantage when it come to your RV. So, just to be safe we're giving you 21.

Each of these 21 advantages have been engineered to deliver superior reliability, durability, and most of all, customer satisfaction.

## Riding on Confidence

At Holiday Rambler we don't settle for anything less than the best, and neither should you.

That's why every motorhome features industry-leading materials and construction. You'll also find the ultimate in RV convenience and strength, like our auto hydraulic leveling system,

Vacu-Bond™ construction, Dryseal™ edge coating, and much more — all coming standard to elevate your travels.



### 1. Power Platform™ (Gas Motorhomes)

Designed to deliver the best in storage, strength, balance and control, the exclusive Power Platform provides a significant enhancement to the Ford® drivetrain.

### 2. Auto Hydraulic Leveling System

More reliable than electric leveling jacks, our automatic hydraulic leveling system is reliable, durable and easy to use. The operating procedure is clean and easy, the results are smooth, simple leveling at the push of a button.

### 3. Powerlock System™

(Interlocking Walls and Ceiling)

REV's interlocking aluminum extrusion wall-joint system integrates sidewall and roof assembly into one locked-together overall structure for long-term performance and durability.

### 4. Powerframe System™

(Precision-Welded Aluminum Walls, Floor, and Roof Structures)

Our wall and roof frames are designed and engineered to fit precisely with interlocking extrusions on the steel-reinforced bridge structure. No "hammer-it-to-fit" stick and frame construction here.

### 5. Vacu-Bond™ Construction

Vacuum-bonded assemblies combine industry-leading materials and construction for a straight and flat integrated wall that's better suited to the rigors of the road. It applies up to 415,000-pounds of vacuum pressure to our already strong welded-aluminum sidewall frame, bead-foam panel insulation, Tuff-Coat fiberglass skin, and inner wall materials for over 30 minutes — far exceeding industry standards.

### 6. Solid Bead-Foam Engineered Fit Insulation™

In some RVs, you may find air holes in the insulation. Not in a REV RV. Using exact measurements, bead-foam is placed between every structural support to eliminate any gaps and provide insulation from both exterior temperature and noise.

### 7. Dryseal™ Edge Coating

This water-wicking coating is applied to every edge of the walls and windows for long-lasting durability. It helps to seal out moisture, prevent delamination, swelling, and mold.

### 8. Tuff-Coat Fiberglass Walls

REV RV seeks to use the highest quality exterior fiberglass on our Class A gas and Class A diesel products. The impressive tuff-coat fiberglass skin is extremely weather resistant and UV resistant. Most importantly, there is no wood substrate on the exterior of the REV Class A products. Delamination is a major concern for manufacturers using the composite or wood backer in their walls. Not at REV RV, our exterior skin has no composite and no wood, just the fiberglass.

### 9. Tuff-Ply Engineered Vinyl Roofing

As the name implies, this "Tuff-Ply" or Thermoplastic Poly Olefin is as tough as it comes and is very low maintenance. Tuff-Ply is flexible, pliable and easily conforms with the roofline radius with little to no stress at the awning rail connection seam. Tuff-Ply is a clean, non-streaking, non-chalking engineered vinyl material that is easy to maintain.

### 10. Tuff-PEX™ Plumbing System

It's a complete system of flexible, yet durable, Oetiker tubing, fittings, and stainless-steel rings — all with sub-zero ratings. Colors of red for hot and blue for cold make servicing simple.

### 11. Tapered Slideout Box Tops

Our slideouts include a tapered roofline that directs water away from the RV to provide an additional level of moisture protection. There are also multiple bead-seals, as well as our debris awning protection.

### 12. Seamless Metallic Slide Room Underbelly

What's underneath is just as important as what's on top. Our metallic slide bottom goes above the standard wood bottom for protection against the elements, and adds yet another level of durability.

### 13. Roto-Cast Molded Luggage Bays

Instead of the industry-standard plywood, these molded bays are more durable, look great, and can be washed with a hose.

### 14. Dedicated Full-Length Metallic A/C Ducting

Instead of cut-out foam channels, REV provides insulated A/C ducting that runs the entire length of your motorhome with carefully placed outlets in the most occupied places to assure cool comfort.

### 15. Sure-Glide Flush Floor Aluminum Slide Transition Ramp

Pinewood ramps that absorb moisture, crack and rot are the industry standard. Not here! Our aluminum ramps will stay straight, extend and retract easily, and will provide you with years of trouble-free operation.

### 16. Automotive Inspired Bonded Windshield

REV RV's bonded windshields surpass the standard "floating" windshield in durability. The entire perimeter of glass is bonded to a frame that provides more support and is much more conducive to the demands of the road.

### 17. Pass-Through Storage

We far exceed the industry standards of exposed seals and hinges with a more durable design taken from our luxury motorcoaches.

### 18. Premium Paint

Just like the cars, trucks, motorcycles and most any other automotive product produced today, our motorhomes receive the same premium painted protection on the exterior. Our REV RV family of Class A motorhomes are painted and clear coat protected in a state-of-the-art facility located right on the REV manufacturing campus. The results are easy to see....Better protection, better looks, and higher resale value after years of enjoyment.

### 19. Radiused and Cambered Entry Door

The industry standard square corner door allows for too much wind noise. So, we use a higher-end solution that fits your motorcoach's body better, latches more securely, and seals tighter.

### 20. Hide-A-Loft™ Overhead Bed System

A REV RV exclusive, our Hide-A-Loft™ Bed System offers a capacity of 600 lbs with ample headroom featuring a queen mattress. The bed system is incredibly comfortable and easy to operate.

### 21. Dealer Partnership

REV's dealer relationship goes beyond the expected. We listen to our dealers and are able to provide you with a motorhome you can be proud to own and that fits your needs. This partnership allows the dealer to be a bridge between the customer and REV Group.



#### Ceiling Interlock

You won't find stick and frame construction here. Our exclusive extruded aluminum allows the ceiling to "lock" with the wall structure, creating one solid aluminum assembly.



#### Five Layer Wall

Our Vacu-Bond™ walls feature an adhesive bonding process that applies up to 415,000-pounds of vacuum pressure to the welded-aluminum sidewall frame, bead-foam panel insulation, and Tuff-Coat fiberglass skin for more than 30 minutes — far exceeding industry standards.



#### Weld Joint

Every joint found in the frame of your Fleetwood motorhome has been welded by a certified welder to add strength to the frame, unlike the stick and nail construction found on other RVs.



#### The Admiral Chassis

The Admiral chassis puts strength, stability, and reliability front and center. Perfect for trips requiring large carrying capacities, and built to store everything you need with pass-through storage. The Admiral is built on the ideal chassis for optimum balance and control on Holiday Rambler gas motorhomes.

#### RV OWNERCARE

Limited one-year/15,000-mile coach warranty and three-year/45,000-mile structural warranty, whichever occurs first, and it is fully transferable for the first 12 months. RV OWNERCARE is one of the RV industry's most comprehensive programs and includes systems, appliances, components and construction, with no deductible and no service charge.

Chassis Warranty provided by Ford®



HOLIDAY RAMBLER

EXTERIOR CHOICES

VINYL OPTION



Express



Solar

PARTIAL PAINT NOT AVAILABLE ON 28A



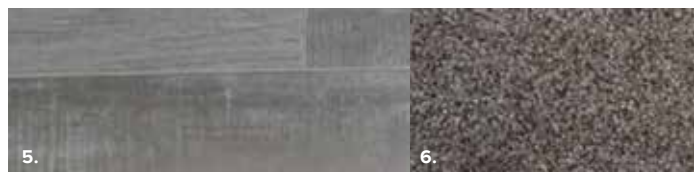
Mystic Beach



Ocean Sand

INTERIOR DECOR CHOICES

- 1. Sofa
- 2. Accent
- 3. Bedspread
- 4. Countertop
- 5. Flooring
- 6. Carpet



Chateau



Brownstone

CABINETRY



Nutmeg High Gloss



Dark Cherry High Gloss



Whispering Wind High Gloss

ADMIRAL

CAB EXTERIOR	28A	29M	32S	34J	35R
Automotive One-Piece Windshield	S	S	S	S	S
Daytime Running Lights	S	S	S	S	S
Remote Power/Heated Mirrors w/Sidewall Cameras	S	S	S	S	S
Slider Driver/Passenger Windows	S	S	S	S	S
Passenger Doggy Window	S	S	S	S	S
Automotive Style Windshield Wiper System	S	S	S	S	S
CAB INTERIOR	28A	29M	32S	34J	35R
Dash/Engine Cover (Soft Vinyl Wrapped Base, w/Instrument & Boss Radio & Passenger Workstation)	S	S	S	S	S
Black Instrument Gauges w/Electronic Information Center	S	S	S	S	S
Driver/Passenger Center Table	S	S	S	S	S
High Output Dash Air Conditioning & Heat	S	S	S	S	S
USB & Auxiliary Inputs	S	S	S	S	S
12V Accessory Ports	S	S	S	S	S
110-Volt AC Outlets	S	S	S	S	S
Electronic Cruise Control	S	S	S	S	S
Windshield Wipers w/Delay	S	S	S	S	S
Steering Wheel w/Tilt Column	S	S	S	S	S
Boss Radio w/AM/FM/Bluetooth w/Backup Camera Screen	S	S	S	S	S
Driver Chair w/Reclining Back, Swivel & Non-Power Controls	S	S	S	S	S
Power Driver Seat	O	O	O	O	O
Passenger Chair w/Reclining Back/Swivel/Non-Power	S	S	S	S	S
Seat Belts - Three Point Driver & Passenger w/Adjustable Straps	S	S	S	S	S
Driver/Passenger Side Panels w/Cupholders	S	S	S	S	S
Driver/Passenger Windshield Electric Roller Shade	S	S	S	S	S
Driver/Passenger Window Shades (Manual)	S	S	S	S	S
Auto Leveling Jacks Controls	S	S	S	S	S
EXTERIOR	28A	29M	32S	34J	35R
Fiberglass Front Cap w/Automotive Headlighting	S	S	S	S	S
Hood Insert	S	S	S	S	S
Rear Laminated Wall w/Automotive Lighting	S	S	S	S	S
ABS Wheel Well Trims	S	S	S	S	S
TPO Roof-Thermoplastic Polyolefin	S	S	S	S	S
One-Color Exterior w/Gel-Coated Match Front Cap (Oyster)	S	S	S	S	S
Vinyl Graphics	S	S	S	S	S
Partial Automotive Paint w/Vinyl Graphics	N/A	O	O	O	O
Electric Legged Patio Awning w/LED	S	S	S	S	N/A
Electric Legless Patio Awning w/LED	N/A	N/A	N/A	N/A	S
Entry Awning	N/A	N/A	N/A	N/A	S
Radius Door w/Screen Door w/Latch & Deadbolt Lock	S	S	S	S	S
Bottom/Side Swing Rad Color Matched Fiberglass Bag Doors	S	S	S	S	S
Window Above Entry Door	S	S	S	S	N/A
Windows-Large Single Pane Frameless	S	S	S	S	S
Windows - Large Dual Glazed Frameless	O	O	O	O	O
Exterior Entertainment Center w/50" TV	S	S	S	S	S
Exterior Kitchen	N/A	S	N/A	S	N/A
Exterior Speakers	S	S	S	S	S
Front/Side/Rear Clearance & Marker Lighting	S	S	S	S	S

EXTERIOR CONTINUED	28A	29M	32S	34J	35R
Gravity Fresh Water Fill	S	S	S	S	S
Exterior Service Station-Water Pump Switch, Exterior Hose / City Water/Park Cable/Satellite Hookups & Black Tank Flush	S	S	S	S	S
Rear Ladder	S	S	S	S	S
Exterior Shower	S	S	S	S	S
Enclosed Exterior Waste Station w/Discharge Valves	S	S	S	S	S
Hitch - Capacity of 8,000 # w/7-Way Round Tow Connection	S	S	S	S	S
Antenna - Unidirectional King Controls Jack Antenna	S	S	S	S	S
Prep for Roof-Mounting Satellite Dish	S	S	S	S	S
Slideout Awning	S	S	S	S	S
KING Satellite System w/Dish Network Receiver	O	O	O	O	O
Main Battery Disconnect - House & Chassis	S	S	S	S	S
INTERIOR	28A	29M	32S	34J	35R
Facing Dinette w/Single Door Storage	S	O	S	S	S
L-Shape Dinette w/Single Door Storage	NA	S	NA	NA	NA
Residential Sofa	S	S	S	S	S
Theatre Seating	O	NA	O	O	S
Hide-A-Loft™ Drop Down Bed-Electric	S	S	S	S	S
Interior-Vinyl Padded Ceiling	S	S	S	S	S
Lino Flooring	S	S	S	S	S
Non-Ozite Lined Cabinet Interiors w/ Adjustable Shelving	S	S	S	S	S
Oversized Windows	S	S	S	S	S
Hidden Euro Hinges & Struts	S	S	S	S	S
New Raised Panel Style Doors/Drawers	S	S	S	S	S
Color Coordinating Designer Style Fascia	S	S	S	S	S
Surf-X Countertops	S	S	S	S	S
Valances w/Lambrequins	S	S	S	S	S
Manual Night Roller Shades	S	S	S	S	S
Energy Efficient LED Surface Mount Ceiling & Under-Cabinet Lighting Throughout	S	S	S	S	S
KITCHEN	28A	29M	32S	34J	35R
Residential Refrigerator w/Inverter	N/A	S	S	S	S
Refrigerator Dometic 8 cf	S	N/A	N/A	N/A	N/A
Three-Burner Range w/Oven	S	S	S	S	S
Over-The-Range Microwave	S	S	S	S	S
Backsplash	S	S	S	S	S
Surf-X Countertop	S	S	N/A	N/A	N/A
Solid Surface Countertop	N/A	N/A	S	S	S
Large Top-Mount Single Bowl	N/A	S	N/A	N/A	N/A
Large Top-Mount Dual Rectangle	S	N/A	S	S	S
Residential Single Handle Faucet w/Pullout Sprayer	S	S	S	S	S
Non-Adjustable Shelves Throughout Kitchen	S	S	S	S	S
Power Ceiling Vent	S	S	S	S	S
BEDROOM/BUNK AREA	28A	29M	32S	34J	35R
King Bed	S	S	S	S	S
Bunk Beds	NA	NA	NA	NA	NA
Bed-in-Bag - Comforter w/Pillows & Pillowcases	S	S	S	S	S
Coordinating Fabric Window Treatments	S	S	S	S	S
Manual Night Roller Shades	S	S	S	S	S
Linoleum Vinyl Flooring	S	S	S	S	S
120V/USB Port	S	S	S	S	S
Energy Efficient LED Flush Mount Ceiling Lighting	S	S	S	S	S

BEDROOM/BUNK AREA CONTINUED	28A	29M	32S	34J	35R
Under Cabinet Reading Lights	S	S	S	S	S
SURF-X Countertops	S	S	S	S	S
Washer/Dryer Prep	NA	NA	NA	NA	S
Bedroom TV w/Plugs - 32"	S	S	S	S	S
LAVY	28A	29M	32S	34J	35R
Lino Flooring	S	S	S	S	S
SURF-X Countertop	S	S	S	S	S
Residential Brushed Nickel Faucet	S	S	S	S	S
Vanity Mirror	S	S	S	S	S
Glass Shower Door	S	S	S	S	S
ABS Shower Pan & Surround	S	S	S	S	S
Shower Skylight	S	S	S	S	S
Metal Shower Head & Matching Single Valve Faucet	S	S	S	S	S
Plastic/Porcelain Foot Flush Toilet	S	S	S	S	S
Medicine Cabinet	S	S	S	S	S
Power Roof Vent	S	S	S	S	S
ENTERTAINMENT	28A	29M	32S	34J	35R
32" Flat Screen LED TV (Bedroom)	S	S	S	S	S
39" Flat Screen LED TV (Living Area)	S	S	S	S	S
50" Flat Screen LED TV (Living Area)	NA	NA	NA	NA	S
Ceiling Speakers-Living Room	S	S	S	S	S
Bluetooth® Coach System (Bedroom w/Exterior Speakers)	S	S	S	S	S
Exterior Entertainment Center w/50" TV	S	S	S	S	S
ELECTRIC & UTILITIES	28A	29M	32S	34J	35R
Single Roof Mount 15,000 AC w/Chille Grill (no heat pumps)	S	S	S	N/A	N/A
Dual 13,500 BTU Air Conditioners	N/A	O	O	S	S
30,000 BTU Furnace	S	S	S	S	N/A
34,000 BTU Furnace	N/A	N/A	N/A	N/A	S
Service: 50-amp	S	S	S	S	S
Converter: 55 AMP Power Converter	S	S	S	S	S
Inverter: Single 1000-2000W (Electronics)	N/A	S	S	S	S
Auto Generator Start	N/A	S	S	S	S
Generator: 4.0kW Onan Quiet	S	S	S	N/A	N/A
Generator: 5.5kW Onan Quiet	N/A	O	O	S	S
Batteries: 6V Deep Cycle House Batteries (2)	S	S	S	S	S
Master Battery Disconnect Switch	S	S	S	S	S
Water Pump: 12V 3GPM High Capacity Shurflo	S	S	S	S	S
Cable TV/Satellite Hookup	S	S	S	S	S
Toilet Tank San-T-Flush System	S	S	S	S	S
Single Location Monitor Panel w/Touch Sensor Tank Monitoring & Battery Readout	S	S	N/A	N/A	N/A
LP/CO & Smoke Detectors/Fire Extinguisher	S	S	S	S	S
Solar Pre-wire	S	S	S	S	S

Product information, photography and illustrations included in this publication were as accurate as possible at the time of printing.

\*\*CSA standards may require substitution or deletion to achieve conformance

## DIMENSIONS & CAPACITIES

MODEL	28A	29M	32S	34J	35R
Overall Length (inches) <sup>4</sup>	29' 3"	31' 0"	31' 0"	36' 0"	36' 0"
Overall Height (inches with A/C) <sup>5,6</sup>	12' 6"	12' 6"	12' 6"	12' 6"	12' 6"
Overall Width (inches maximum) <sup>5,6</sup>	102"	102"	102"	102"	102"
Interior Height (inches maximum)	82"	82"	82"	82"	82"
Interior Width (inches maximum)	96"	96"	96"	96"	96"
Patio Awning Width (feet & inches)	20' 0"	20' 0"	20' 0"	22' 0"	18' 0"
Interior Storage (cu. ft.)	81	92	92	110	130
Exterior Storage (cu. ft.)	70	45	45	82	160
Fresh Water Holding Tank (gal)	50	50	50	50	50
Grey Water Holding Tank (gal)	37	37	37	37	37
Black Water Holding Tank (gal)	37	37	37	37	37
Appliance Propane Tank (gal) (WC)	14	14	14	14	14
Water Heater Tank (gal)	6	6	6	6	6

## CHASSIS

MODEL	28A	29M	32S	34J	35R
Wheelbase (inches)	190"	190"	208"	228"	228"
GVWR (lbs) <sup>1</sup>	16,000	18,000	22,000	22,000	22,000
Front GAWR (lbs) <sup>2</sup>	6,500	7,000	8,000	8,000	8,000
Rear GAWR (lbs) <sup>2</sup>	11,000	11,000	15,000	15,000	15,000
GCWR (lbs) <sup>3</sup>	23,000	23,000	26,000	26,000	26,000
Hitch Rating Weight (lbs)	8,000	8,000	8,000	8,000	8,000
Tongue Weight (lbs)	800	800	800	800	800
Fuel Capacity (gal)	80	80	80	80	80

### FORD® CHASSIS

Model: Ford<sup>†</sup>

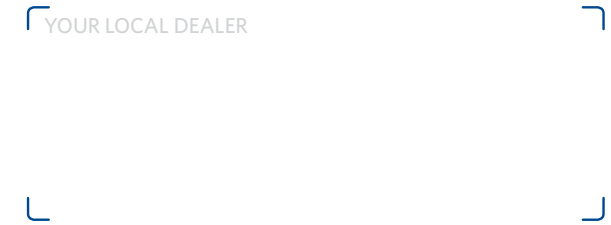
Engine: 6.8L Triton V10

Transmission: Ford<sup>†</sup> 6-Speed,  
Automatic w/Overdrive

Alternator: 175 AMP

Torque: 460 lb.-ft. @ 3,000 RPM

Horsepower: 320 HP @ 3,900 RPM



### DISCLAIMER

- GVWR (Gross Vehicle Weight Rating) is the maximum permissible weight of this fully loaded motorhome. The GVWR is equal to or greater than the sum of the (UVW) unloaded vehicle weight plus the (OCCC) occupant cargo-carrying capacity<sup>1</sup>.
  - GAWR (Gross Axle Weight Rating) is the maximum permissible loaded weight a specific axle is designed to carry.
  - GCWR (Gross Combined Weight Rating) is the value specified by the motorhome manufacturer as the maximum allowable loaded weight of this motorhome with its towed vehicle. Towing and braking capacities may be different. Refer to Holiday Rambler and chassis manufacturer's manuals for complete information.
  - Length measured from front bumper to rear bumper (excludes accessories).
  - Excludes safety equipment and awnings.
  - Motorhomes feature a body width over 96" which will restrict your access to certain roads. Before purchasing, you should research any state and/or province road laws which may affect your usage.
  - Tank manufacturer's listed water capacity (WC). Actual propane capacity is 80% of water listing as required by the safety code.
- <sup>†</sup> The chassis manufacturer recommends the installation of a supplemental brake control system to activate the brakes on the vehicle or trailer you are towing. Hitch receiver ratings expressed are maximum for the hitch receiver installed and may require the purchase of additional equipment that is dependent on the weight of the towed load. Consult with hitch receiver manufacturer for further information.
- \* UVW and OCCC are found on the label containing the federal certification tag in each RV.
- \*\* The Minimum Towable Load of this vehicle is the available weight capacity, up to GCWR, when the coach is fully loaded to maximum GVWR. However, if the coach is loaded to something less than maximum GVWR, that extra available weight capacity can be added to your Towable Load. For example, if your coach is loaded to 1000lbs less than maximum GVWR, your Towable Load increases accordingly. Do not exceed the hitch rating weight, GVWR or GCWR.
- \*\* Seatbelts and locations are shown in the brochure for display purposes only. Actual numbers and locations will vary by model.
- \*\*\* All 2019 REV Recreation Group motorhomes include a limited one-year/15,000-mile coach warranty and three-year/45,000-mile structural warranty, whichever occurs first, and is fully transferable for the first 12 months.

### CONTACT US

To locate a dealer near you, visit our website at [www.holidayrambler.com](http://www.holidayrambler.com) or call 1-877-252-4666. We can also be contacted at Holiday Rambler Customer Relations, P.O. Box 1007, Decatur, IN 46733.

**IMPORTANT—PLEASE READ:** Product information, photography and illustrations included in this publication were as accurate as possible at the time of printing. For further product information and changes, please visit our website at [www.holidayrambler.com](http://www.holidayrambler.com) or contact your local Holiday Rambler dealer. Prices, materials, design and specifications are subject to change without notice. All weights, fuel, liquid capacities and dimensions are approximate. Holiday Rambler has designed its recreational vehicles to provide a variety of uses for customers. Each vehicle features optimal seating, sleeping, storage and fluid capacities. The user is responsible for selecting the proper combination of loads (i.e., occupants, equipment, fluids, cargo, etc.) to ensure that the vehicle's capacities are not exceeded.



HOLIDAY RAMBLER  
REV GROUP

Holiday Rambler is part of REV Recreation Group, a division of REV Group, Inc., a family of 33 industry-leading motor vehicle brands. At REV Group, we innovate, design and build products that connect and protect thousands of people every day—our trusted vehicles are engineered with the utmost rigor and precision to deliver the highest levels of performance, reliability, durability and safety.

[holidayrambler.com](http://holidayrambler.com)  
[revgroup.com](http://revgroup.com)