

CORNERSTONE | ANTHEM | ASPIRE | REATTA XL | REATTA



ENTEGRACOACH®

2020

LUXURY  
DIESEL

2020 ENTEGRA COACH LUXURY DIESEL





# ENTEGR A

COACH®

#WEAREENTEGR A



**CORNERSTONE** PG 3-6

**ANTHEM** PG 7-10

**ASPIRE** PG 11-14

**REATA XL** PG 15-18

**REATA** PG 19-22



# THE QUIETEST RIDING, BEST HANDLING COACH ON THE MARKET TODAY. PERIOD.

## HERE'S WHY:

### 1. SPARTAN® CHASSIS

Every Spartan® chassis comes with a best-in-class 3-year/50,000-mile transferable warranty, with no deductibles. Spartan® chassis also boasts an industry first limited lifetime warranty on the frame as well as a Cummins® 5-year/100,000-mile engine warranty and an Allison® 5-year/200,000-mile transmission warranty.

Included in the limited warranty is roadside assistance provided by Coach-Net, which offers service/towing through 40,000 service and repair facilities in the U.S. and Canada.

### 2. EXCLUSIVE X-BRIDGE™ FRAME

Our exclusive X-Bridge frame adds even more floor strength and structural rigidity, eliminating chassis flex and twisting; with it, the suspension—not the chassis—absorbs road shock and vibration.

### 3. FIVE-INCH-THICK FLOORS (CORNERSTONE, ANTHEM & ASPIRE ONLY)

The industry's thickest floor starts with a ¾-inch 7-ply plywood for dramatic reductions in energy transmission, noise and vibration. Cabinets are screwed directly to the wood and tile is laid precisely around them; other manufacturers place cabinets on top of the tile, causing squeaks or cracking.

### 4. RESIDENTIAL-STYLE WALLS AND ROOF (CORNERSTONE, ANTHEM & ASPIRE ONLY)

Our roof combines crowned aluminum truss rafters on 16" centers with Flexfoil®, fiberglass insulation and ¾" plywood decking. Our walls, along with our front and rear caps, feature tucked-and-glued batting insulation—the same kind of fiberglass insulation found in sound-absorbing theater rooms.



### 5. MONOTUBE GAS PRESSURE SHOCKS

Designed specifically for luxury motorcoaches by Bilstein®, these shocks have 228% more surface area than twin-tube shocks for greater sensitivity and control. They virtually eliminate excessive sway and self-adjust.

### 6. MICHELIN® MOTORHOME TIRES

One of the most trusted names in the business, Michelin's motorhome tires are designed for unparalleled fuel efficiency, high mileage and precise load control.

### 7. IFS (INDEPENDENT FRONT SUSPENSION)

Offers better ride and handling characteristics due to the ability of each wheel to address the road undisturbed by the activities of the other wheel.



# CORNERSTONE



Shown: Tuscan Glazed Cherry with Oxford Décor



## STANDARDS & OPTIONS

### CHASSIS

Spartan® K3 raised rail chassis  
Cummins® 15 liter X15 turbocharged 605HP engine  
1,950-lb. ft. torque at 1,150 RPM  
Allison® 4,000 MH 6-speed transmission  
Equalizer hydraulic automatic coach leveling system  
Valid air leveling system with auxiliary air compressor  
Collision avoidance system with collision warning  
and adaptive cruise control  
Electronic stability control  
Remote air connection  
210-amp alternator  
Bilstein® shocks - 60mm front & 46mm rear/tag  
All-wheel ABS disc brakes  
Chassis batteries (2) 12 volt  
15-gal. DEF tank (dual fill)  
1,500 watt engine block heater  
Three-stage engine brake  
Reyco® Granning® IFS 20,000-lb. front axle and air suspension  
150-gal. fuel tank (dual fill)  
20,000-lb. hitch with 7/4-pin plug  
Side-mounted radiator  
Dana® rear axle 20,000-lb., tag axle 14,000-lb.  
4.30 rear axle ratio  
Reyco Granning passive steer tag axle  
Tag axle air dump  
Michelin 365/ 70R 22.5" tires (front) and 315/80R 22.5" tires (rear)  
Tire pressure monitor system  
Spartan® Safehaul tow vehicle air brake system  
Automatic traction control  
55-degree turning radius

### CONSTRUCTION

2-1/2" exterior wall with welded tubular aluminum construction and high-gloss, gel-coat fiberglass  
2" x 4" floor truss construction  
3/4" 7-ply plywood main floor decking  
X-Bridge™ frames welded into chassis frame  
Steel-reinforced front cap and windshield frame  
Insulation with reflective Flexfoil floor (R-33), roof (R-24), sidewalls (R-16), front and rear caps (R-22)  
One-piece fiberglass roof with 3/8" plywood decking and 4" arched aluminum roof truss  
Flush-mounted electric-powered slideout rooms with both VegaTouch™ and separate rocker switch controls  
Heated basement storage area  
Aluma-Tru™ Superstructure construction on 12"-16" centers

### HEAT, A/C, WATER, AND POWER

15,000-BTU low profile A/Cs (3) with heat pumps and condensation drain system  
L16 AGM batteries (4), (6V/390 amp hrs. ea.)

Black holding tank sprayer  
Sani-Con® Macerator holding tank dump system with electric gate valves and manual back-up system  
50-amp power cord with electric reel  
Onan® 12,500-watt generator with auto gen start on powered slide-out tray  
Aqua-Hot 450 diesel hydronic water and heating system with in-floor heat throughout and engine preheat  
3,000 watt pure sine wave inverters (2)  
Premium surge protector with smart transfer switch  
Water hose with electric powered reel  
City and tank water filtration system  
Trutank™ ultrasonic tank monitoring system displayed on VegaTouch screen  
Winterizing drain system

### EXTERIOR

Sikkens custom full body paint  
Power slide-out cargo trays  
2.8 cu. ft. exterior Dometic refrigerator/ freezer on slide-out tray  
LED lit chrome clearance accent light  
Power engine door with manual override  
Diamond Shield™ front protective film mask  
Samsung® 40" 4K UHD Slim, Smart TV and Bose® Solo 5 sound bar on TV bracket with extend, tilt & swivel arm  
LED high and low beam headlights  
Lighted grab handle with keypad system  
LED fog lights, LED marker lights, turn lights, accent lights & license plate light, LED docking lights  
Chrome, heated, remote control, Ramco side-view mirrors with blind-spot indicators  
Roof mounted Girard® Vision dual pitched patio awnings with LED lights  
Full-width rear mudflap, with chrome "Cornerstone" nameplate  
Winegard® Trav'ler® satellite dish DIRECTV® - standard with USA option  
Winegard® Trav'ler® satellite dish Shaw TV - standard with CSA option  
Executive Bus Armor 10" stainless steel trim  
Exterior heated utility center with 5" Firefly® system monitor panel  
Winegard® Rayzar automatic powered TV antenna  
Frameless, tinted, dual-pane, safety-glass windows  
Girard® Ultra window shade awnings and slide-out awnings

### COCKPIT

E-Z Steer™ electric, adjustable power steering assist  
Two dual USB ports and 12V socket for charging  
Xite™ 360° camera system that displays on digital dash screen  
Valid 15" digital dash with selector knob and three selection main screens

Villa® 6-way power, lumbar, air cooled, heated, leather driver and passenger seats with integrated seatbelt  
Glass panel, dual 9" touchscreen in-dash infotainment center with Rand McNally™ RV navigation, Bluetooth, SiriusXM™, AM/FM tuner, integrated camera control, house mode whole coach audio distribution, and integrated VegaTouch coach control  
Blind spot monitoring system displayed on digital dash screen  
Power adjustable brake and accelerator pedals  
Push button start system  
VIP wood-grain, leather-wrapped, power tilt and telescoping steering wheel with integrated power controls for cruise and wipers  
JBL® premium audio 11-speaker sound system with amplifier, speakers and DVC sub-woofer  
Powered front sun visors and privacy shade

### INTERIOR

Central vacuum system  
Samsung® HD Blu-ray player  
LED lit fireplace with 1500W heating element (45B, 45X, and 45Y)  
Hand laid 16" x 32" porcelain tile floor  
Villa Italian leather furniture throughout  
Aire-Secure™ travel locks for all pocket doors  
10" VegaTouch touchpad system for complete integration of coach controls/ mobile app control  
Premium LED 12V recessed ceiling lighting  
Powered solar day and black out night shades  
Samsung® 50" 4K UHD Smart TV  
Samsung® 32" LED Slim 1080P Smart TV in front overhead  
Bose® Soundbar 700 sound system with wireless surround sound speakers  
Whirlpool® stacked washer and dryer

### KITCHEN

Induction cooktop with matching wood cover  
Dishwasher with wood raised panel door front  
Quartz countertops with stainless steel sink and dimmer LED accent lighting  
Whirlpool® Gold 1.9 cu. ft. convection microwave oven  
Whirlpool® stainless steel residential refrigerator with ice maker and water dispenser  
Maxxair® power exhaust vent fan  
Large deep drawer for waste basket with easy access trash chute (trash chute not available in 45F)

### BEDROOM

Select Comfort® Sleep Number® king-size mattress  
Large cedar-lined wardrobe with motion activated LED closet rod light  
Ceiling fan  
Samsung® Blu-ray player  
Nightstands with USB ports and quartz tops

Bose® Solo 5 sound bar  
Samsung® 32" LED Slim 1080P Smart TV

### BATHROOM

Quartz countertop with integrated glass sinks and LED accent lighting  
Porcelain tiled shower walls and floor with skylight and frameless glass shower door  
Maxxair® Deluxe power exhaust vent fan with intake  
Pivoting shower head and separate hand-held spray wand  
Teakwood shower seat (not available in 45F)  
Theford® Tecma china toilets with push button flush (45A, 45F, 45W)

### SAFETY

Combination carbon monoxide detector and gas alarm  
Porch light and motion sensor security lights  
Safe  
Security system with glass shatter sensors  
Smoke alarm

### OPTIONS

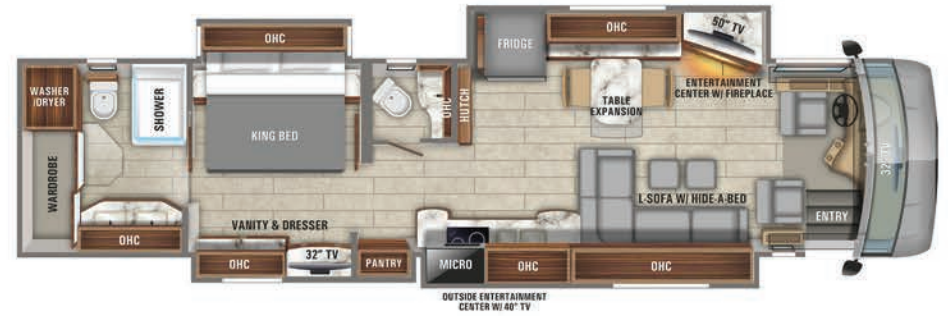
Canadian Standards (CSA)  
Booth dinette (45A, 45B, 45W, 45Y)  
Free standing table with 4 chairs driver side (45X)  
100" power theater seat passenger side (45B, 45Y)  
100" power reclining sofa passenger side (45B, 45Y)  
82" power theater seat passenger side (45A)  
82" power theater seat driver side (45W)  
74" power theater seat passenger side (45F, 45X)  
Winegard® In-Motion satellite dome  
Winegard® WIFI Extender with 4G/LTE  
Solar panels (Dual-100 watt) with Morningstar® SunSaver™ Duo solar panel charge controller



# CORNERSTONE FLOORPLANS



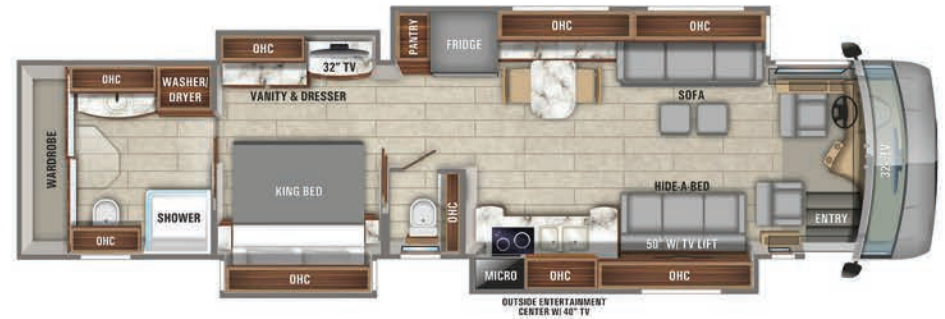
45A | B AND C



45B | B, D AND E



45F | C



45W | B AND C



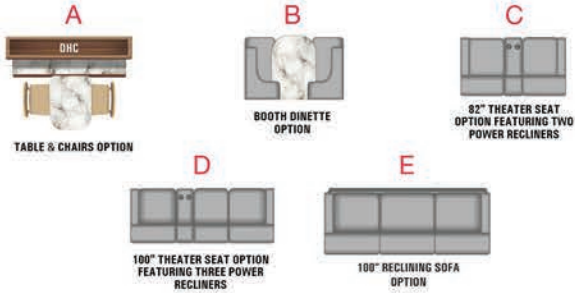
45X | A AND C



45Y | B, D AND E



## SPECS & OPTIONS

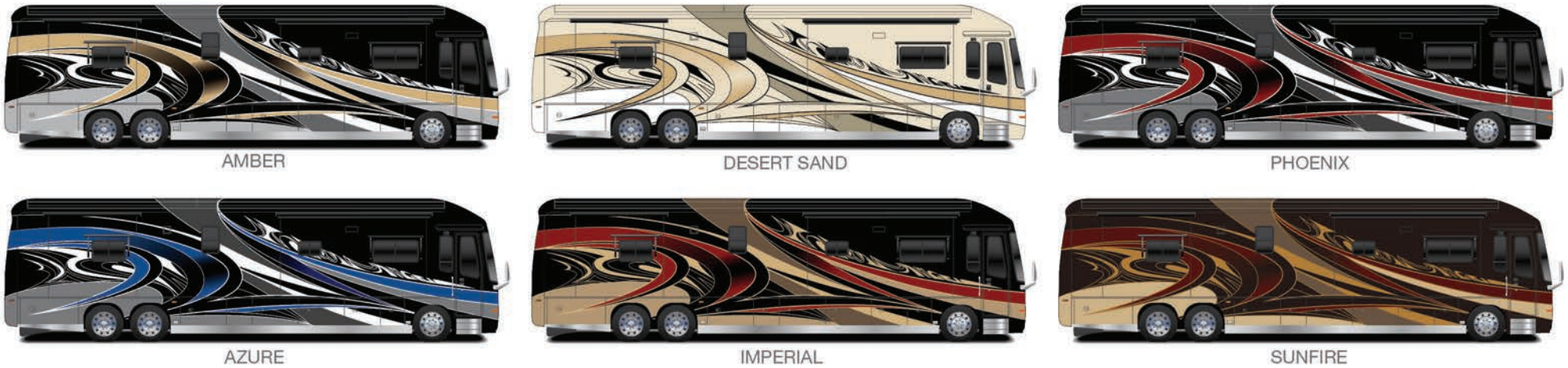


Floorplan	GVWR (lbs.)	GCWR (lbs.)	Front GAWR (lbs.)	Rear GAWR (lbs.)	Tag GAWR (lbs.)	Wheel Base	Overall Length	Exterior Height w/ A/C & Satellite	Exterior Width	Interior Height	Fresh Water Capacity (gal.)	Grey Waste Water Capacity (gal.)	Black Waste Water Capacity (gal.)
ALL	54,000	74,000	20,000	20,000	14,000	320"	44' 11"	12' 11"	101"	84"	100	62	41

## CORNERSTONE INTERIORS



## CORNERSTONE PAINT SELECTIONS





# ANTHEM



Shown: Natural Glazed Cherry with Russet Décor



## STANDARDS & OPTIONS

### CHASSIS

Spartan® K2 raised rail chassis  
Cummins® L9 turbocharged 450 HP engine  
1,250-lb. ft. torque at 1,400 RPM  
Allison® 3000 MH 6-speed transmission  
Remote air connection  
Equalizer hydraulic automatic coach leveling system  
Valid air leveling system with auxiliary air compressor  
170-amp alternator  
Bilstein® shocks- 60mm front axle & 46mm rear/tag axles  
ABS disc brakes on front axle, drum brakes on drive and tag axle  
Chassis batteries (2) 12V  
15-gal. DEF tank (dual fill)  
1,000 watt engine block heater  
Two-stage engine brake  
150-gal. fuel tank (dual fill)  
15,000-lb. hitch with 7/4-pin plug  
Side-mounted radiator  
Reyco® Granning® IFS 20,000-lb. front axle with air suspension  
Dana rear drive axle 20,000-lb., tag axle 12,000-lb.  
4.88 rear axle ratio  
Tag axle air dump  
Michelin® XZA 1 365/80R 22.5" tires (front) and XZA 2 315/80R 22.5" tires (rear)  
Tire pressure monitor system  
Spartan® Safehaul tow vehicle air brake system  
Automatic traction control  
55-degree turning radius

### CONSTRUCTION

2- 1/2" exterior wall with welded tubular aluminum construction and high-gloss, gel-coat fiberglass  
2" x 4" floor truss construction  
3/4" 7-ply plywood main floor decking  
X-Bridge™ frames welded into chassis frame  
Steel-reinforced front cap and windshield frame  
Insulation with reflective Flexfoil® floor (R-33), roof (R-24), sidewalls (R-16), front and rear caps (R-22)  
One-piece fiberglass roof with 3/8" plywood decking and 4" arched aluminum roof truss  
Flush-mounted electric-powered slideout rooms both with VegaTouch and separate rocker switch controls  
Heated basement storage area  
Aluma-Tru™ superstructure construction on 12"-16" centers

### HEAT, A/C, WATER, AND POWER

15,000-BTU low profile A/Cs (3) with heat pumps and condensation drain system  
L16 AGM batteries (4), (6V/390 amp hrs. ea.)  
Black holding tank sprayer  
Sani-Con® Macerator holding tank dump system with manual gate valves plus manual back-up  
50-amp power cord with electric reel  
Onan® 12,500-watt diesel generator with auto gen start, on powered slide-out tray

Aqua-Hot® 450 diesel hydronic water and heating system with in-floor heat throughout and engine preheat  
3,000 watt pure sine wave inverters (2)  
Premium surge protector with smart transfer switch  
Water hose with electric powered reel  
City and tank water filtration system  
Trutank™ ultra sonic tank monitoring system displayed on VegaTouch screen  
Winterizing drain system

### EXTERIOR

LED accent lights on underside of slideout rooms passenger side  
Manual slideout cargo tray  
2.8 cu.ft. exterior Dometic® refrigerator/freezer on slide out tray  
LED lit chrome clearance accent light  
Daytime running lights  
Girard® power entrance door awning with LED lights  
Power engine door with manual override  
Diamond Shield™ front protective film mask  
40" Samsung® 4K UHD Slim, Smart TV and Bose® Solo 5 sound bar on TV bracket with extend, tilt and swivel arm  
LED high and low beam headlights  
Lighted grab handle with keypad system  
LED fog lights, marker lights, turn lights, accent lights, and docking lights  
Chrome, heated, remote control, side-view mirrors with blind-spot indicators  
Roof mounted Girard® Vision dual pitched patio awnings with LED lights  
Full-width rear mudflap, with chrome "Anthem" nameplate  
Winegard® Trav'ler® satellite dish DIRECTV® - standard with USA option  
Winegard® Trav'ler® satellite dish Shaw TV - standard with CSA option  
Premier Bus Armor 8" stainless steel trim  
Exterior heated utility center with 5" LED monitor panel  
Third brake light  
Winegard® Razar automatic powered TV antenna  
Frameless, tinted, dual-pane, safety-glass windows  
Girard® Ultra slideout and window shade awnings

### COCKPIT

E-Z Steer™ electric, adjustable power steering assist with steering angle sensor  
Two dual USB ports and 12V socket for charging  
Xite™ 360° camera system that displays on digital dash screen  
Valid 15" digital dash with selector knob and three selection main screens  
Villa® 6-way power, lumbar, heated Ultraleather® driver and passenger seats with integrated seatbelt  
Powered flush stepwell cover

Glass panel, dual 9" touchscreen in-dash infotainment center with Rand McNally™ RV navigation, Bluetooth, SiriusXM™, AM/FM tuner, integrated camera control, house mode whole coach audio distribution, and integrated VegaTouch coach control  
Blind spot monitoring system displayed on digital dash screen  
Powered, adjustable brake and accelerator pedals  
Push button start system  
VIP wood-grain, leather-wrapped, power tilt and telescoping steering wheel with integrated controls for radio, cruise, and wipers  
JBL® premium audio 11-speaker sound system with amplifier, speakers and DVC subwoofer  
Powered front sun visors and privacy shade

### INTERIOR

Central vacuum system  
Samsung® HD Blu-ray player  
LED lit fireplace with 1500W heating element (44B, 42DEQ)  
Hand laid high-gloss 8" x 48" porcelain tile floor  
Villa Ultraleather furniture throughout  
Aire-Secure™ travel locks for all pocket doors  
10" VegaTouch touchpad system, for complete integration of coach controls/mobile app control  
Premium LED 12V recessed ceiling lighting  
Powered solar day and black out night shades  
Samsung® 50" 4K UHD Smart TV  
Samsung® 32" LED Slim 1080P Smart TV in front overhead  
Bose® SoundTouch 300 sound system  
Whirlpool® stacked washer and dryer

### KITCHEN

Induction cooktop with interior matching wood cover  
Dishwasher with wood raised panel door front  
Solid surface countertops with stainless steel sink and dimmer LED accent lighting  
Porcelain tile backsplash  
Whirlpool® Gold 1.9 cu. ft. convection microwave oven  
Whirlpool® residential stainless steel refrigerator with ice maker and water dispenser  
Maxxair® power exhaust vent fan  
Large, deep drawer for waste basket with easy access trash chute (trash chute not available in 44F)

### BEDROOM

Select Comfort® Sleep Number® king size mattress  
Ceiling fan  
Large cedar-lined wardrobe with motion activated LED light  
Samsung® Blu-ray player  
Nightstands with USB ports and solid surface tops  
Bose® Solo 5 sound bar  
Samsung® 32" LED Slim 1080P Smart TV

### BATHROOM

Solid surface countertops with integrated glass sink and LED accent lighting in master bath  
Porcelain tiled shower wall with skylight  
Maxxair® Deluxe power exhaust vent fan with intake  
Fixed shower head with separate hand held spray wand  
Teakwood shower seat (not available in 44F)  
Theford® Tecma china toilet(s) with push button flush (44A, 44F, 42H, 44W); Tecma in master bath & Aria in stool room (44B)

### SAFETY

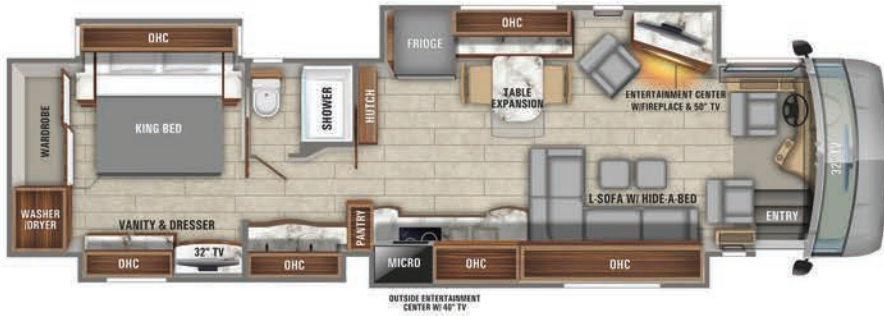
Combination carbon monoxide detector and gas alarm  
Porch light and motion sensor security lights  
Safe  
Security system with glass shatter sensors  
Smoke alarm

### OPTIONS

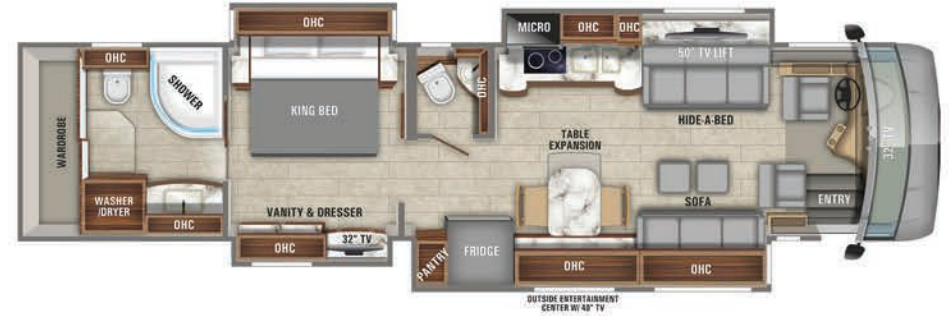
Canadian Standards (CSA)  
Booth dinette (44A, 44B, 44W, and 42DEQ)  
100" reclining sofa (44B and 42DEQ)  
Winegard® In-Motion dome, roof mounted satellite dish  
Solar panels (Dual-100 watt) with Morningstar® SunSave™ Duo solar panel charge controller  
100" theater seat (44B and 42DEQ)  
82" theater seat (44A)  
82" theater seat (44W)  
74" theater seat (44F)  
Winegard® WIFI extender with 4G/LTE



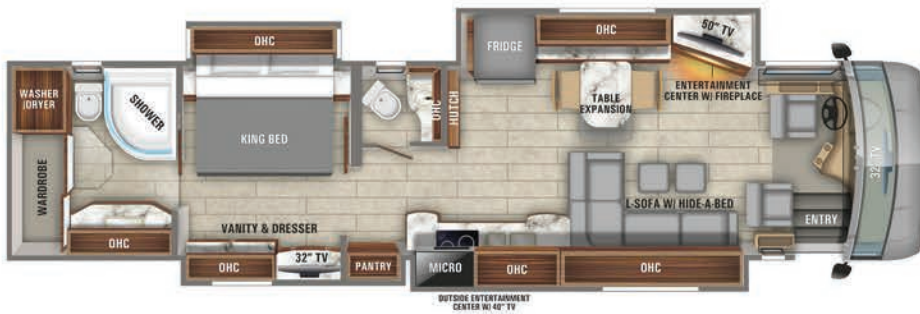
# ANTHEM FLOORPLANS



42DEQ | A, C AND D



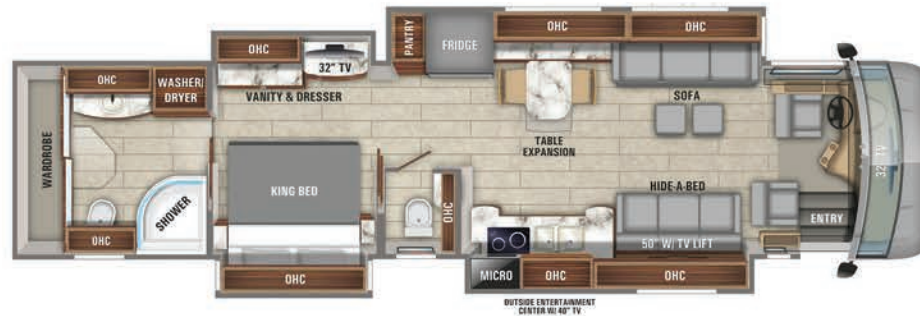
44A | A AND B



44B | A, C AND D



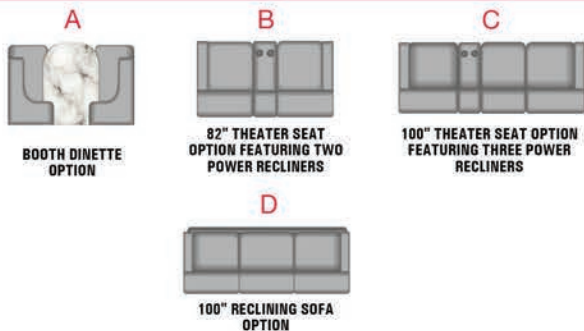
44F | B



44W | A AND B



## SPECS & OPTIONS



Floorplan	GVWR (lbs.)	GCWR (lbs.)	Front GAWR (lbs.)	Rear GAWR (lbs.)	Tag GAWR (lbs.)	Wheel Base	Overall Length	Exterior Height w/ A/C & Satellite	Exterior Width	Interior Height	Fresh Water Capacity (gal.)	Grey Waste Water Capacity (gal.)	Black Waste Water Capacity (gal.)
42DEQ	52,000	67,000	20,000	20,000	12,000	296"	43' 5"	12' 11"	101"	84"	100	62	41
44A, 44B, 44F, 44W	52,000	67,000	20,000	20,000	12,000	320"	44' 11"	12' 11"	101"	84"	100	62	41

## ANTHEM INTERIORS



WOOD OPTIONS



## ANTHEM PAINT SELECTIONS



BALLET



JIVE



TANGO



JAZZ



SALSA



WALTZ



# ASPIRE



Shown: Stonewall Grey Wood with Cobblestone Décor



## STANDARDS & OPTIONS

### CHASSIS

Spartan® K2 raised rail chassis  
Cummins® L9 turbocharged 450 HP engine 1,250-lb. ft. torque at 1,400 RPM  
Allison® 3000 MH 6-speed transmission  
Remote air connection  
Equalizer hydraulic automatic coach leveling system  
170-amp alternator  
Bilstein™ 46mm shocks  
ABS disc brakes on front axle, drum brakes on drive and tag axle (ABS disc brakes on front and rear axle on 38M and 40P)  
Chassis batteries 2-12V  
15-gal. DEF tank (dual fill except on 38M, 40P, 44R)  
1,000 watt engine block heater  
Two-stage engine brake  
Reyco® Granning® IFS 17,000-lb. front axle with air suspension  
150-gal. fuel tank (100-gal. fuel tank on 38M and 40P) dual fill  
15,000-lb. hitch with 7/4-pin plug, (10,000-lb hitch on 38M and 40P)  
Side-mounted radiator  
Dana rear axle 20,000-lb., tag axle 12,000-lb. (rear axle 24,000-lb. and no tag on 38M and 40P)  
4.88 rear axle ratio  
Tag axle air dump (not available on 38M and 40P)  
Michelin® 315/80R 22.5" tires (front) and 295/80R 22.5" tires (rear)  
Spartan® Safehaul tow vehicle air brake system  
55-degree turning radius

### CONSTRUCTION

2- 1/2" exterior wall with welded tubular aluminum construction and high-gloss, gel-coat fiberglass  
2" x 4" floor truss construction  
3/4" 7-ply plywood main floor decking  
X-Bridge™ frames welded into chassis frame  
Steel-reinforced front cap and windshield frame  
Insulation with reflective Flexfoil floor (R-33), roof (R-24), sidewalls (R-16), front and rear caps (R-22)  
One-piece fiberglass roof with 3/8" plywood decking and 4" arched aluminum roof truss  
Heated basement storage area  
Aluma-Tru™ superstructure construction on 12"-16" centers

### HEAT, A/C, WATER, AND POWER

15,000-BTU low profile A/Cs (3) with heat pumps and condensation drain system  
L16 AGM batteries (2),(6V/390 amp hrs. each)  
Black holding tank sprayer  
Sani-Con® Macerator holding tank dump system with manual gate valves with manual back-up  
50-amp power cord with electric reel

Onan® 10,000-watt diesel generator with auto gen start on slide-out tray  
Aqua-Hot® 400 diesel hydronic water and heating system with in-floor heat throughout  
3,000 watt pure sine wave inverter  
Premium surge protector with smart transfer switch  
Water hose with electric reel  
City and tank water filtration system  
Trutank™ ultrasonic tank monitoring system  
Winterizing drain system

### EXTERIOR

Slideout storage tray  
Daytime running lights  
Girard® power entrance door awning with LED lights  
Power rear engine door with manual override  
Diamond Shield™ front protective film mask  
Samsung® 40" 4K UHD Smart TV with JBL Bar Studio sound bar on TV bracket with extend, tilt and swivel arm  
LED low beam headlights, Halogen high beam headlights  
Lighted grab handle with keypad system  
Halogen fog lights  
LED marker lights, turn lights, accent lights  
LED docking lights  
Chrome, heated, remote control, side-view mirrors with integrated cameras  
Roof mounted Girard® Vision dual pitched patio awnings with LED lights  
Full-width rear mudflap, with chrome "Aspire" nameplate  
Winegard® Trav'ler® satellite dish DIRECTV - standard with USA option  
Winegard® Trav'ler® satellite dish Shaw TV - standard with CSA option  
Exterior heated utility center with 5" Firefly® system monitor panel  
Winegard® Rayzar Z1 TV antenna  
Frameless, dual-pane, tinted safety-glass windows

### COCKPIT

(2) dual USB ports and 12V socket for charging  
Camera system with two side cameras and digital rear camera  
6-way power, lumbar, Ultra-Leather driver and passenger seats with integrated seatbelt  
Powered flush stepwell cover  
Dual 9" touchscreen in-dash infotainment center with Rand McNally™ RV navigation, Bluetooth, SiriusXM™, AM/FM tuner, integrated camera control

Spartan® Message Center with LCD display featuring: odometer, tachometer, fuel economy, fuel remaining, outside air temp., coolant temp., engine oil temp. and pressure, transmission temp., turbo boost pressure, air pressure, trip meter, speed and voltage  
Power adjustable brake and accelerator pedals  
Wrapped dash with molded side consoles  
Push button start system  
VIP, tilt and telescoping steering wheel with integrated controls for cruise and wipers  
JBL® premium audio sound system with speakers, amplifier and DVC sub-woofer  
Powered front sun visors and privacy shade  
Ultra-Vision® one-piece wrap-around tinted windshield

### INTERIOR

Bar area with beverage chiller, rain glass door on upper cabinet with LED accent lighting (44R)  
Central vacuum system  
10" VegaTouch touchpad system, for complete integration of coach controls/mobile app control also  
Samsung® HD Blu-ray player in living area  
Hand laid high gloss 8" x 48" porcelain tile floor  
Flexsteel® furniture  
Aire-Secure™ travel locks for all pocket doors  
Premium recessed LED 12V lighting  
Manual solar day and blackout night shades  
Samsung® 50" 4K UHD Smart TV  
Samsung® 32" LED 1080P Smart TV in front overhead  
Samsung® HW-M360 sound bar with sub-woofer in living area  
Whirlpool® stacked washer and dryer

### KITCHEN

Induction cooktop with matching wood cover  
Dishwasher drawer with wood raised panel drawer front  
Solid surface countertops with stainless steel sink and dimmer LED accent lighting  
Whirlpool® 1.9 cu. ft. convection microwave oven  
Whirlpool® stainless steel residential refrigerator with ice maker and water dispenser  
Maxxair® power vent exhaust fan  
Large deep drawer for waste basket with easy access trash chute (trash chute not available on 40P and 44R)

### BEDROOM

King-size gel memory foam mattress  
Motion activated LED light in wardrobe  
Ceiling fan  
Samsung® Blu-ray player  
Nightstands with USB ports and solid surface tops  
JBL® Studio sound bar  
Samsung® 32" LED Slim 1080P Smart TV

### BATHROOM

Solid surface countertops with integrated sink and dimmer LED accent lighting  
Textured porcelain tile shower with skylight and clear glass shower door  
Thetford® china toilets: Tecma with push button flush, and Aqua-Magic with foot flush in stool room (44B, 40P)  
Fixed shower head and separate hand held spray wand  
Maxxair® power exhaust fan with intake

### SAFETY

Combination carbon monoxide detector and gas alarm  
Porch light and motion sensor security lights  
Security system with glass shatter sensors  
Smoke alarm

### OPTIONS

Canadian Standards (CSA)  
Booth dinette driver side (44B, 42DEQ, 40P, 44W)  
100" power reclining sofa (44B, 42DEQ)  
100" power theater seat (44B, 42DEQ)  
82" power theater seat (38M, 44R, 44W)  
74" power theater seating and 60" hide-a-bed (40P)  
74" power theater seat (44F)  
Winegard® In-Motion dome, roof mounted satellite dish  
Winegard® WIFI Extender with 4G/LTE  
Power baggage door locks  
Solar panels (Dual-100 watt) with Morningstar SunSaver Duo solar panel charge controller  
Batteries - 2 additional AGM, 4 total (44B, 44F, 44R, 44W)  
LED lit fireplace with 1500w heating element (38M, 44B, 42DEQ)



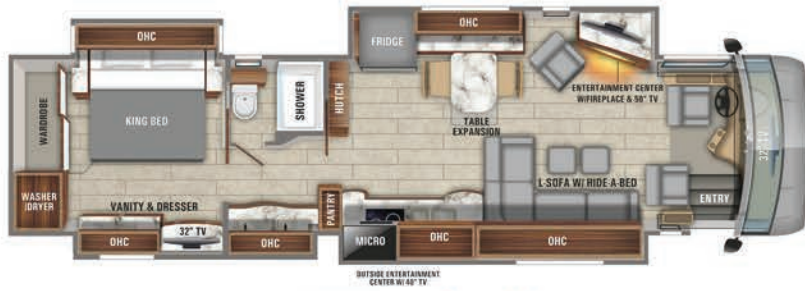
# ASPIRE FLOORPLANS



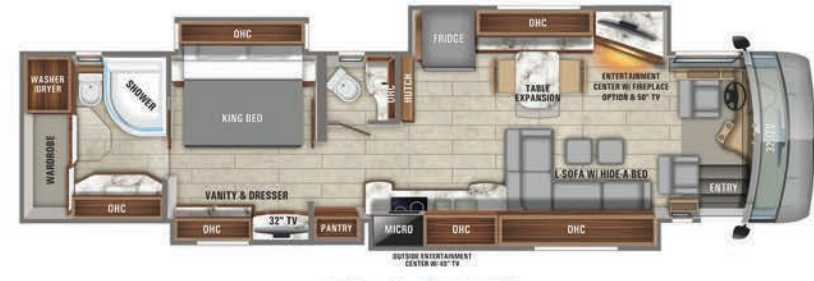
38M | A



40P | A, B AND D



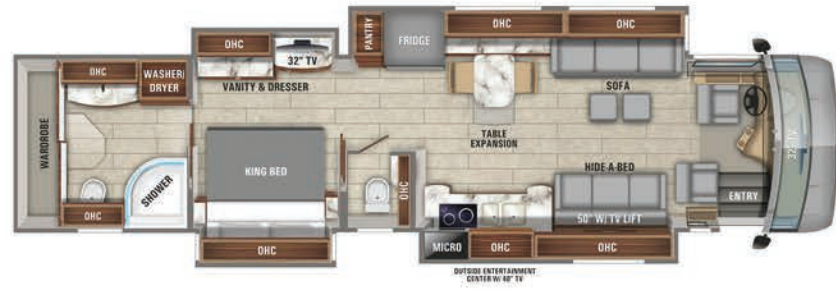
42DEQ | A AND E



44B | A AND E



44R | B



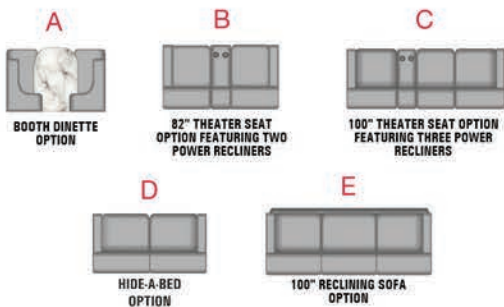
44W | A AND B



44F | B

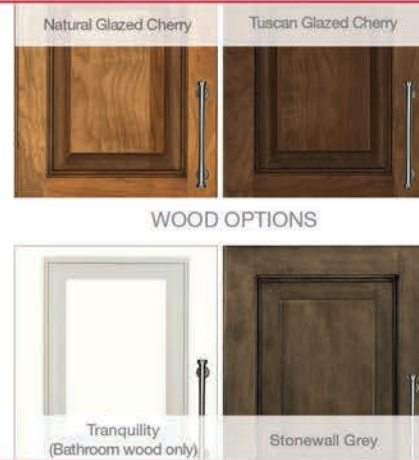
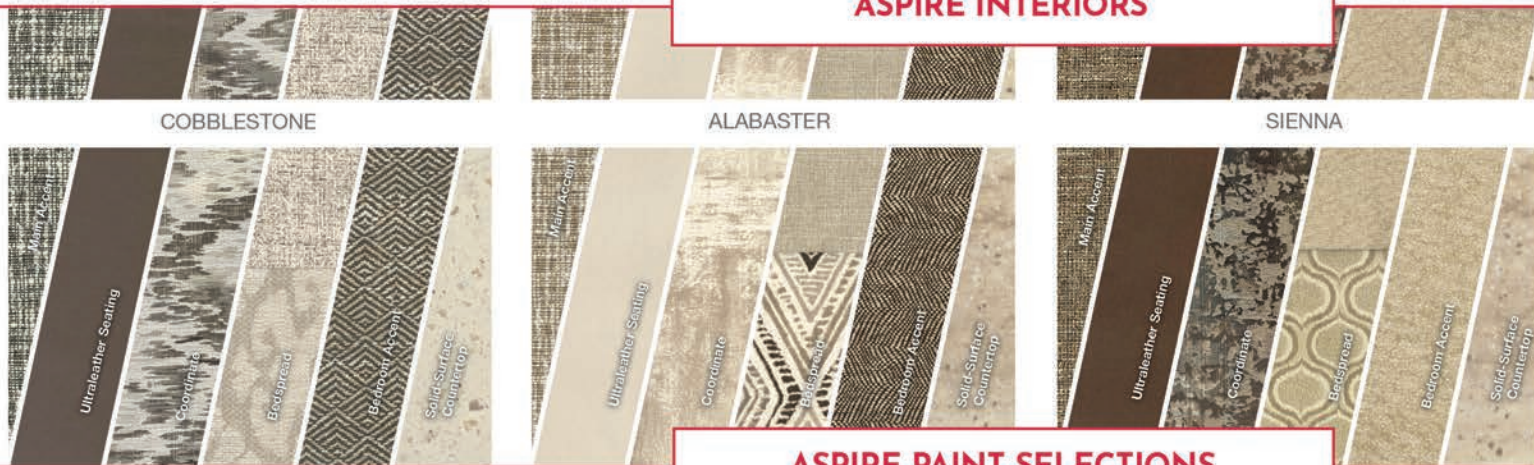


## SPECS & OPTIONS



Floorplan	GVWR (lbs.)	GCWR (lbs.)	Front GAWR (lbs.)	Rear GAWR (lbs.)	Tag GAWR (lbs.)	Wheel Base	Overall Length	Exterior Height w/ A/C & Satellite	Exterior Width	Interior Height	Fresh Water Capacity (gal.)	Grey Waste Water Capacity (gal.)	Black Waste Water Capacity (gal.)
38M-40P	41,000	51,000	17,000	24,000	N/A	261"	40' 11"	12' 11"	101"	84"	100	62	41
42DEQ	49,000	64,000	17,000	20,000	12,000	296"	43' 5"	12' 11"	101"	84"	100	62	41
44B, 44R, 44W, 44F	49,000	64,000	17,000	20,000	12,000	320"	44' 11"	12' 11"	101"	84"	100	62	41

## ASPIRE INTERIORS



## ASPIRE PAINT SELECTIONS



GOLDEN ROD



MARIGOLD



TIGER



IRIS



POPPY



# REATTA XL



Shown: Stonewall Grey Wood with Onyx Décor



## STANDARDS & OPTIONS

### STANDARD CHASSIS EQUIPMENT

Spartan® K2 raised rail chassis  
Cummins® L9 turbocharged 380 HP engine 1,150-lb. ft. torque at 1,400 RPM  
Variable geometry turbo (VGT) engine brake  
Allison® 3000 MH 6-speed transmission  
1,000 watt engine block heater  
IFS front suspension  
Dana rear axle  
4.88 rear axle ratio  
10,000-lb. hitch with 7/4-pin plug  
Rear-mounted radiator  
Power adjustable brake and accelerator pedals  
Bilstein 46mm shocks  
100-gal. fuel tank (driver side fill)  
10-gal. DEF tank (driver side fill)  
Michelin 275/80R 22.5" tires  
Chassis batteries (2) 12V  
170-amp alternator  
Remote air connection  
Spartan® Safehaul Tow Brake air system  
Equalizer hydraulic automatic coach leveling

### STANDARD CONSTRUCTION FEATURES

X-Bridge frames welded into chassis frame  
Heated basement storage  
Insulation with reflective Flexfoil roof (R-24), front and rear caps (R-22)  
Floor with vacuum bonded layers of Darco underbelly, a welded aluminum frame, R-9 bead-foam insulation and 5/8" Strukturwood  
High Gloss Sidewalls gelcoat vacuum bonded laminated with R-8 bead-foam insulation  
Electric-powered slideout rooms  
One-piece fiberglass roof with 3/8" plywood decking and 4" arched aluminum roof truss  
Steel-reinforced front cap and windshield frame

### HEAT, A/C, POWER AND WATER EQUIPMENT

Aqua-Hot 250 hydronic water and heating system  
Electric radiant floor heating system  
15,000-BTU A/Cs (2) with heat pumps  
50-amp power cord on electric powered reel  
Onan 10,000-watt diesel generator with auto gen start on slide-out tray  
2,000-watt pure sine wave inverter with 100 amp battery charger  
L16 AGM batteries (2), (6v/390 amp hrs. ea.)  
Surge protector transfer switch

Black holding tank sprayer  
Sani-Con® Macerator holding tank dump system with manual gate valves  
City and tank water filtration system  
Winterizing drain system  
Fireplace (37K Only)

### STANDARD EXTERIOR EQUIPMENT

3M® front protective film mask  
Halogen high and low beam headlights  
Halogen fog lights  
Daytime running lights  
LED marker, turn lights, docking lights, accent lights and license plate light  
Keypad system for keyless entry  
Power patio awning with LED lights  
Power entrance door awning with LED lights  
Slide-out awnings  
Window awnings  
Heated, remote control, side-view mirrors with integrated cameras  
Frameless, dual-pane, tinted, safety-glass windows  
Exterior 39" LED TV on adjustable TV bracket  
Exterior utility center  
Winegard Trav'ler satellite dish DIRECTV - standard with USA option  
Winegard Trav'ler satellite dish Shaw TV - standard with CSA option  
Winegard Rayzar Z1 TV antenna  
Full-width rear mudflap, with chrome "Entegra" nameplate

### COCKPIT AMENITIES

Powered front sun visors and privacy shade  
Power adjustable driver and passenger seats with integrated seatbelt and power foot rests  
Tilt and telescoping steering wheel with integrated controls for cruise and wipers  
Spartan® Message Center with LCD display featuring: odometer, tachometer, fuel economy, fuel remaining, outside air temp, coolant temp, engine oil temp and pressure, transmission temp, turbo boost pressure, air pressure, trip meter, speed and voltage  
Sony® 7" touchscreen in-dash infotainment center with navigation, Bluetooth, Sirius XM and AM/FM tuner  
Side and rear view cameras with designated 7" in-dash screen for easy visibility  
Two dual USB ports and 12V socket for charging  
Power adjusting pedals

### STANDARD INTERIOR EQUIPMENT

10" VegaTouch touch screen coach systems control panel  
LED recessed 12V lighting  
Hand laid 12" x 24" polished porcelain tile flooring  
Flexsteel furniture  
Manual solar day and black out night shades  
Front overhead Insignia 32" LED TV  
Insignia 50" LED TV  
Insignia sound bar  
LG Blu-ray player  
Decorative ceiling fixture with integrated accent lighting

### STANDARD KITCHEN EQUIPMENT

Solid surface countertops with stainless steel sink  
Induction cooktop  
1.5 cu. ft. convection microwave oven  
Residential refrigerator with ice maker and water dispenser  
Power exhaust fan  
Two slide out trays in overhead cabinet

### STANDARD BEDROOM EQUIPMENT

King size pillow-top mattress on tilt bed  
Insignia 32" LED TV  
LG Blu-ray player

### STANDARD BATHROOM EQUIPMENT

Solid surface countertop with integrated sink  
Thetford Aqua Magic toilet with foot flush  
One-piece fiberglass shower with skylight  
Power exhaust fan with intake

### STANDARD SAFETY EQUIPMENT

Porch light  
Smoke alarm  
Combination carbon monoxide detector and gas alarm  
Safe

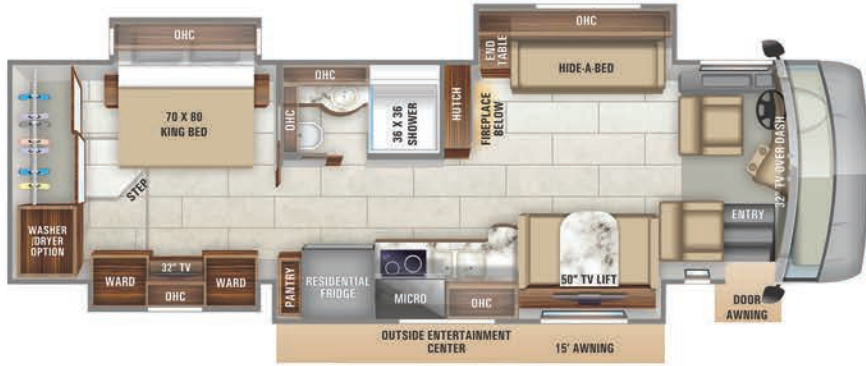
### OPTIONS

Canadian Standards (CSA)  
68" powered theater seating  
34" bedroom fireplace (40Q2)  
Winegard® In-Motion satellite dome  
Winegard® WIFI Extender with 4G/LTE  
Basement slideout storage tray (1)

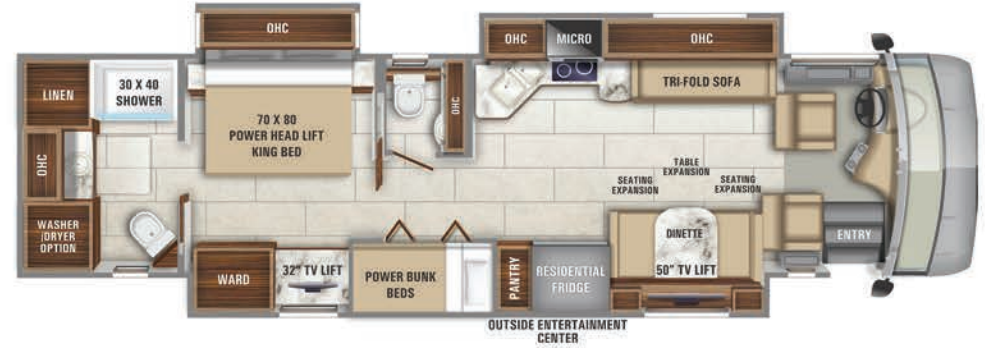
Solar power prep  
Central vacuum system  
3rd A/C unit 15,000-BTU with heat pump  
Whirlpool stacked washer and dryer  
Interior decors in Pinecone and Eggshell available with Natural Cherry semi-gloss and High Gloss Tuscan Cherry cabinetry. Onyx decor available with high gloss Stonewall Grey cabinetry  
82" drivers-side theater seating (37K)



# REATA XL FLOORPLANS



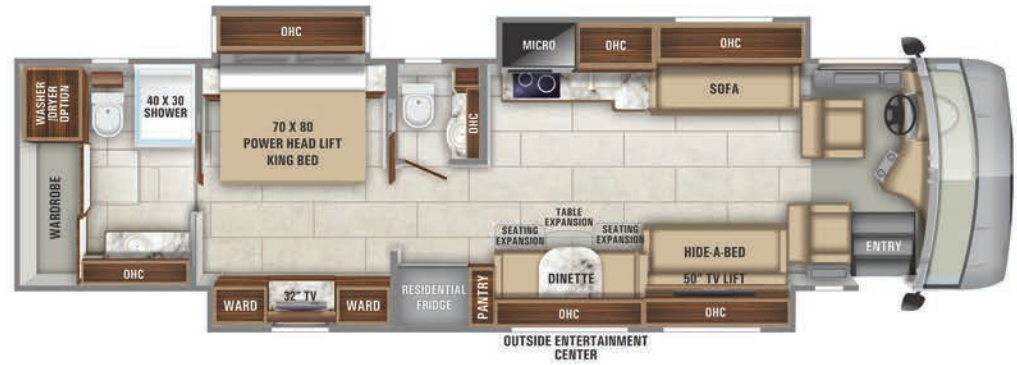
37K | A



39BH | A



39T2 | A



40Q2 | A AND B



## SPECS & OPTIONS

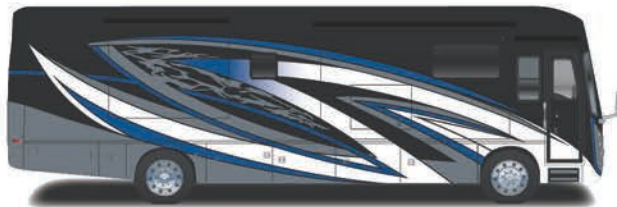


Floorplan	GVWR (lbs.)	GCWR (lbs.)	Front GAWR (lbs.)	Rear GAWR (lbs.)	Wheel Base	Overall Length	Exterior Height w/ A/C & Satellite	Exterior Width	Interior Height	Fresh Water Capacity (gal.)	Grey Waste Water Capacity (gal.)	Black Waste Water Capacity (gal.)
37K	36,600	42,000	12,600	20,000	230"	37' 10"	12' 10"	101"	84"	100	62	41
39T2	36,320	46,320	14,320	22,000	255"	39' 11"	12' 10"	101"	84"	100	62	41
39BH	36,320	46,320	14,320	22,000	255"	39' 11"	12' 10"	101"	84"	100	62	41
40Q2	36,320	46,320	14,320	22,000	267"	40' 11"	12' 10"	101"	84"	100	62	41

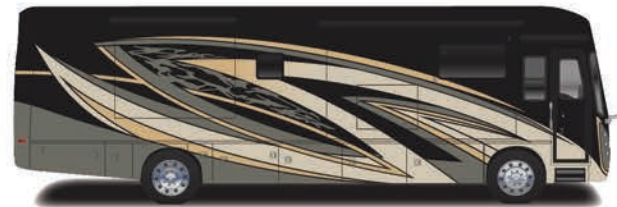
## REATA XL INTERIORS



## REATA XL PAINT SELECTIONS



IRONSTONE



MOJAVE



JASPER



SUNSTONE



# REATTA



Shown: Natural Glazed Cherry with Pinecone Décor (See Reatta Interiors for Current Valance Fabric)



## STANDARDS & OPTIONS

### STANDARD CHASSIS EQUIPMENT

Spartan® K1 raised rail chassis  
Cummins® B6.7 turbocharged 360 HP engine  
800-lb. ft. torque at 1,800 RPM  
Independent Front Suspension (IFS) 12,600 lb.  
front axle (37MB) & 14,320 (39BH,39T2)  
Allison® 3000 MH 6-speed transmission  
Remote air connection  
Equalizer hydraulic automatic coach leveling  
170-amp alternator  
Bilstein® 46mm shocks  
Variable geometry turbo (VGT) engine brake  
Chassis batteries (2) 12V  
10-gal. DEF tank  
750 watt engine block heater  
100-gal. fuel tank  
10,000-lb. hitch with 7/4-pin plug  
Rear-mounted radiator  
Rear axle 20,000-lb. (37MB) 22,000-lb.  
(39BH/39T2)  
4.88 rear axle ratio  
Michelin® 275/80R 22.5" tires  
Spartan® Safehaul tow brake system

### STANDARD CONSTRUCTION FEATURES

Floor with vacuum bonded layers of Darco underbelly, a welded aluminum frame, R-9 bead-foam insulation and 5/8" Structurewood® X-bridge™ frames welded into chassis frame  
Steel-reinforced front cap and windshield frame  
Insulation with reflective Flexfoil roof (R-24), front and rear caps (R-22)  
One-piece fiberglass roof with 3/8" plywood decking and 4" arched aluminum roof truss  
Electric-powered slide-out rooms  
Heated basement storage  
Sidewalls high gloss gelcoat vacuum bonded laminated with R-8 bead-foam insulation

### HEAT, A/C, POWER AND WATER EQUIPMENT

15,000-BTU A/Cs (2) with heat pump  
L16 AGM batteries (2) (6V/390 amp hrs. ea.)  
Black holding tank sprayer  
Sani-Con® Macerator holding tank dump system with manual gate valves

50-amp power cord  
Onan 8,000-watt diesel generator with auto-gen start on slide-out tray  
35,000 BTU furnace (37MB)/ 1-20,000 and 1-30,000 (39BH, 39T2)  
2,000-watt pure sine wave inverter with 100-amp battery charger  
Surge protector transfer switch  
16.5 gal. propane tank  
City and tank water filtration system  
10 gal. gas/electric water heater  
Winterizing drain system  
Fireplace (37K only)

### STANDARD EXTERIOR EQUIPMENT

Daytime running lights  
Power entrance door awning with LED lights  
3M front protective film mask  
Exterior 39" LED TV on adjustable TV bracket  
Halogen high/low beam headlights and fog lights  
Grab handle and keypad system for keyless entry  
LED marker lights, turn lights, license plate light, accent lights, & docking lights  
Heated, remote control, side-view mirrors with integrated cameras  
Power patio awning with LED lights  
Window awnings  
Full-width rear mudflap  
Winegard Trav'ler satellite dish DIRECTV - standard with USA option  
Winegard Trav'ler satellite dish Shaw TV - standard with CSA option  
Slideout awnings  
Exterior utility center  
Winegard Rayzar Z1 TV antenna  
Frameless, tinted, dual-pane, safety-glass windows  
Keypad system for keyless entry

### COCKPIT AMENITIES

Power adjustable brake and accelerator pedals  
(2) dual USB ports and 12V socket for charging  
Sony 7" touchscreen in-dash infotainment center with navigation, Bluetooth, Sirius XM, AM/FM tuner, and side/rearview camera display  
Power adjustable driver and passenger seats

Spartan® Message Center with LCD display featuring: odometer, tachometer, fuel economy, fuel remaining, outside air temp, coolant temp, engine oil temp & pressure, transmission temp, turbo boost pressure, air pressure, trip meter, speed and voltage  
Tilt and telescoping steering wheel with integrated controls for cruise and wipers  
Powered front sun visors and privacy shade

### STANDARD INTERIOR EQUIPMENT

7" VegaTouch touch screen coach systems control panel  
LG Blu-ray player  
Hand laid 12" x 24" polished porcelain tile flooring  
Flexsteel® furniture  
LED recessed 12V lighting  
Manual solar day and blackout night shades  
Insignia™ 50" LED TV  
Insignia™ sound bar  
Decorative ceiling feature with integrated accent lighting

### STANDARD KITCHEN EQUIPMENT

Induction cooktop  
Solid surface countertops with stainless steel sink  
1.5 cu. ft. convection microwave oven  
Residential refrigerator with ice maker and water dispenser  
Power exhaust fan

### STANDARD BEDROOM EQUIPMENT

King size pillow top mattress (37MB); King size pillow top mattress on tilt bed (39BH, 39T2)  
LG Blu-ray player  
Insignia 32" LED TV

### STANDARD BATHROOM EQUIPMENT

Solid surface countertops with integrated sink  
One-piece fiberglass shower with skylight  
Power exhaust fan with intake  
Thetford® Aqua Magic toilet with foot flush

### STANDARD SAFETY EQUIPMENT

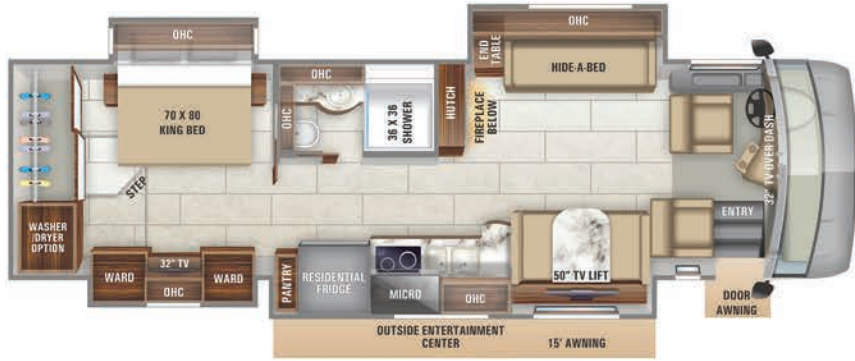
Combination carbon monoxide detector and LP gas alarm  
Porch light  
Smoke alarm

### OPTIONS

3rd A/C unit 15,000-BTU with heat pump (39T2, 39BH)  
Canadian Standards (CSA)  
Central vacuum system  
LED lit fireplace with 1500W heating element (37MB ONLY)  
Winegard® In-Motion satellite dome  
Slideout storage tray (1)  
Solar power prep  
74" theater seating driver-side (37MB)  
68" theater seating driver-side (39T2, 39BH)  
Winegard® WIFI extender with 4G/LTE  
Stacked washer and dryer  
82" drivers side theater seating (37K Only)



# REATA FLOORPLANS



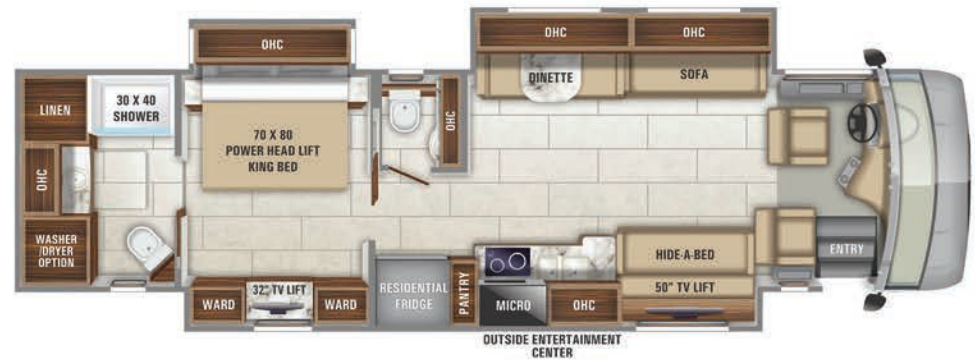
37K | A



37MB | A



39BH | A



39T2 | A

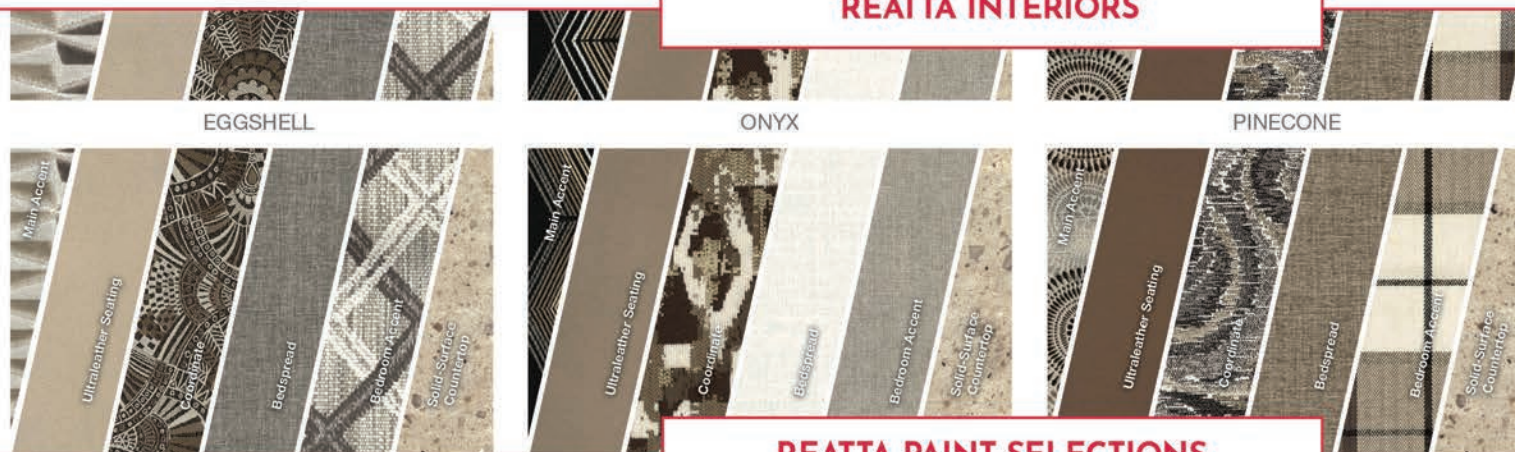


## SPECS & OPTIONS



Floorplan	GVWR (lbs.)	GCWR (lbs.)	Front GAWR (lbs.)	Rear GAWR (lbs.)	Wheel Base	Overall Length	Exterior Height w/ A/C & Satellite	Exterior Width	Interior Height	Fresh Water Capacity (gal.)	Grey Waste Water Capacity (gal.)	Black Waste Water Capacity (gal.)
37K	32,600	42,000	12,600	20,000	236"	37' 10"	12' 10"	101"	84"	100	62	41
37MB	32,600	42,000	12,600	20,000	236"	37' 10"	12' 10"	101"	84"	100	62	41
39BH	36,320	46,320	14,320	22,000	261"	39' 11"	12' 10"	101"	84"	100	62	41
39T2	36,320	46,320	14,320	22,000	261"	39' 11"	12' 10"	101"	84"	100	62	41

## REATA INTERIORS



## REATA PAINT SELECTIONS



COPPER CANYON



RED SEA



GLACIER BAY



SHENANDOAH





**ENTEGRACOACH, INC., P.O. BOX 460, MIDDLEBURY, IN 46540**  
**WWW.ENTEGRACOACH.COM**

Gross Vehicle Weight Rating (GVWR): The maximum permissible weight of the motorcoach, including the Unloaded Vehicle Weight (UVW) plus passengers, personal items, all cargo, fluids, options and dealer-installed accessories. The GVWR is equal to or greater than the sum of the UVW and the Cargo Carrying Capacity. Gross Axle Weight Rating (GAWR): The maximum allowable weight each axle assembly is designed to carry, as measured at the tires, therefore including the weight of the axle assembly itself. Gross Combined Weight Rating (GCWR): The maximum allowable combined weight of the motorcoach used as a tow vehicle and the attached towed vehicle.



Entegra Coach, Inc. | P.O. Box 460 | Middlebury, IN 46540 See dealer for further information and prices. All information in this brochure and on [www.entegracoach.com](http://www.entegracoach.com) is the latest available at the time of publication approval. Entegra Coach reserves the right to make changes and to discontinue models without notice or obligation. Photography may show optional equipment or props used for decoration purposes only. RVs built for sale in Canada may differ to conform to Canadian codes. ENTEGRA COACH, JAYCO and the JAYCO BIRD IN FLIGHT are registered trademarks of Jayco, Inc. Printed in U.S.A. 30K 05/17 ©2019 Entegra Coach, Inc. 274786

