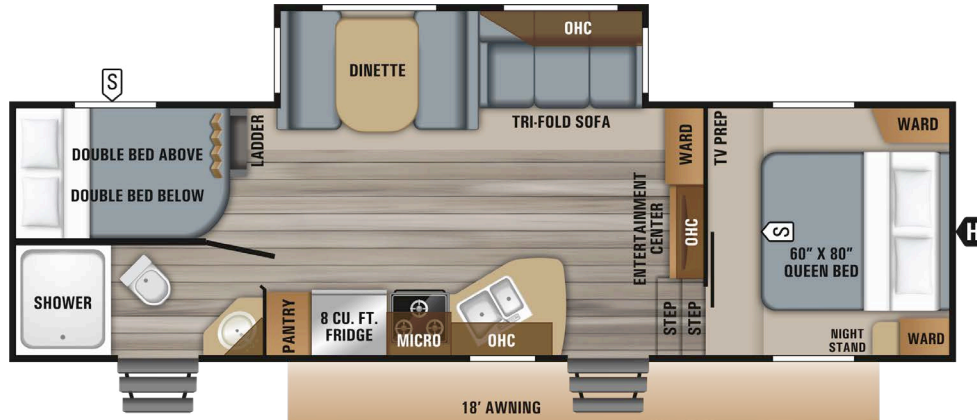




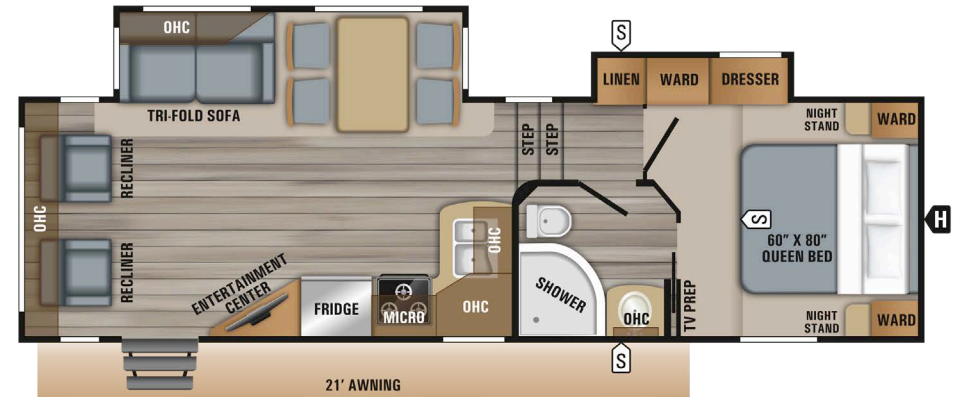
# EAGLE HTX

The 2019 Eagle HTX fifth wheel lineup serves as Jayco's new entry level fifth wheel series without sacrificing popular features or product innovations. With a tight focus on popular floorplans and options at a lighter weight, Eagle HTX delivers all the necessary half-ton towable camping essentials at a lower cost!

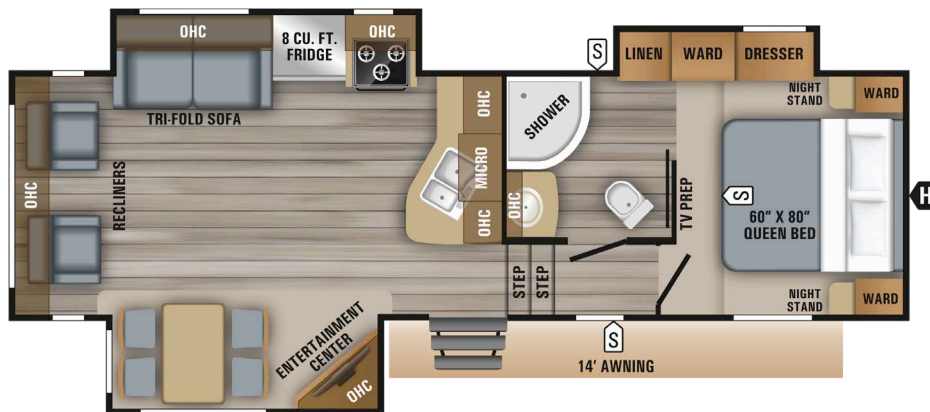
## EAGLE HTX FIFTH WHEEL FLOORPLANS



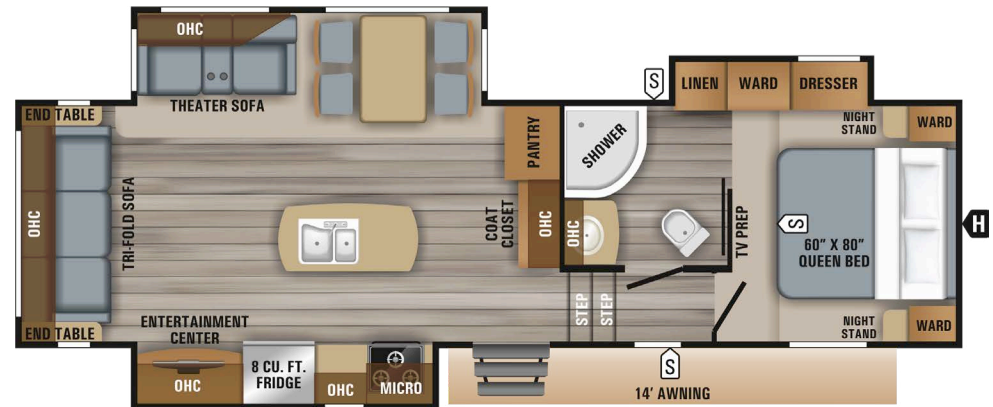
**26BH** LENGTH: 31' 6" WEIGHT: 7,335 lb. HITCH WEIGHT: 1,525 lb.



**26RLX** LENGTH: 31' 6" WEIGHT: 7,915 lb. HITCH WEIGHT: 1,450 lb.



**27SG** LENGTH: 31' 0" WEIGHT: 8,100 lb. HITCH WEIGHT: 1,525 lb.



**28RSX** LENGTH: 32' 11" WEIGHT: 8,405 lb. HITCH WEIGHT: 1,425 lb.

Jayco, Inc. | P.O. Box 460 | Middlebury, IN 46540 See dealer for further information and prices. All information in this brochure and on [www.jayco.com](http://www.jayco.com) is the latest available at the time of publication approval. Jayco reserves the right to make changes and to discontinue models without notice or obligation. Photography may show optional equipment or props used for decoration purposes only. RVs built for sale in Canada may differ to conform to Canadian codes. JAYCO and the JAYCO BIRD IN FLIGHT are registered trademarks of Jayco, Inc. Printed in USA 15K RB 11/18 © 2018 Jayco, Inc. 274899

Follow Jayco #Jayco50



### Travel with confidence

At Jayco, we build our RVs to handle every adventure, then back them with our industry-leading 2-year limited warranty. We, with support from our select partners, have you covered for **2 camping seasons**. That's **730 days**. You won't find a better warranty in the business, because the only strings we attach are those that deliver the ultimate in reliability. That's the Jayco difference. So go explore. For a copy of our 2-year limited warranty with complete terms and conditions, please contact your local Jayco dealer.

# 2019 EAGLE HTX FIFTH WHEEL STANDARDS & OPTIONS



## STANDARD EXTERIOR EQUIPMENT

### 4-Star Handling Package™:

- Dexter Axles with Nev-R-Adjust brakes and E-Z Lube hubs
- Wet bolt fasteners and bronze bushings
- Upgraded MORryde suspension
- Upgraded Goodyear tires

### HELIX Cooling System™ (industry exclusive):

- Exterior-mounted 15,000 BTU "Whisper Quiet" A/C unit
- Jayco exclusive insulated duct design
- Directional and closeable A/C vents
- Larger return air vents with user accessible filters

### Climate Shield™ zero degree tested weather protection:

- Fully enclosed and heated underbelly (ducted)
- High BTU output furnace
- Double layer fiberglass batt insulation in ceiling and floor
- Double sided radiant barrier insulation (roof, floor, cap, and slide room floors)
- PEX plumbing

### I-class cambered, structural steel I-beam frame

### StrongholdVBL™ aluminum framed and vacuum bond laminated gel-coated fiberglass exterior walls (including rear wall and slide room end walls)

### Magnum Truss™ Roof System (strongest tested roof in the industry) with one piece, seamless DiFlex II material

### JaySMART™ (Safety Markers And Reverse Travel) LED Lighting (patent-pending)

### High gloss, fiberglass front cap with built-in specialty LED lighting LED exterior lighting package

### Custom automotive-grade vinyl exterior graphics package

### 30 amp power service with detachable Powersmart™ LED shore power cord

### Dual 30 lb. propane bottles with auto regulator

### Sturdy, anti-slip aluminum entrance steps (Made in U.S.A.!) with blue LED light

### Pass-through storage with Slam-latch™ baggage doors

### Digital TV antenna

### Exterior marine-grade speakers

Fully enclosed, LED lit universal docking center with quick connect outside shower, city water connection, and black tank flush Independent satellite and whole coach cable hookups

### Battery disconnect

### Water heater bypass

### Under-mounted spare tire

### LP quick connect (outside grill prep)

### Roof ladder

### Front electric landing gear

## STANDARD INTERIOR EQUIPMENT

### Solid hardwood slide fascia

### Handcrafted and glazed doors, drawers and trim

### Heavy-duty, 75 lb., full extension, steel ball-bearing drawer guides

### 5/8 inch tongue and groove joined plywood floor decking

### Shaw® residential carpeting with R2X® stain guard (Made in U.S.A.)

### Shaw residential carpet pad with R-value and sound dampening

### "Wood Plank" vinyl flooring (Made in U.S.A., standard minimal carpeting)

### LED interior lighting throughout

### LED dimmer switches in main room and dining area

### Central command center with built-in tank monitoring

### Tri-fold hide-a-bed sofa with residential sleep surface

### Swivel glider recliners (26RLX and 27SGX)

### Stainless steel kitchen sink

### Brushed nickel kitchen faucet with pullout sprayer

### 8 cu. ft. gas/electric refrigerator with freezer

### Dual USB charging ports (kitchen and bedroom)

### 12V charging station

### Extra 110V power outlets in kitchen and slide rooms

### Bathroom skylight

### LED backlit medicine cabinet with custom framed mirror (industry exclusive)

### Bathroom stone and glass tile backsplash

### Blue LED nightlights (bathrooms and bunkrooms)

### Porcelain foot flush toilet

### 360 Siphon™ roof vent

### Residential quilted bedspread and pillows

### Smart LED Reading Lights (with blue nightlight mode)

### CPAP prepped bedroom

### Carbon monoxide and LP detector

### Hardwood safety handrail on steps (N/A 26BHX)

## CUSTOMER VALUE PACKAGE (MANDATORY)

### Goodyear® Endurance® Tires (Made in U.S.A.! Load Range 'E')

### Dexter® Axles with Nev-R-Adjust® brakes and E-Z Lube® hubs

### MORryde® CRE-3000™ rubberized suspension

### 15,000 BTU "Whisper Quiet" A/C

### Quick recovery gas/electric DSI water heater (17.8 gallon per hour)

### Residential Queen (60 inch x 80 inch) Simmons® mattress

### Electric patio awning with integrated LED lights

### Custom machined aluminum rims

### Rear 2 inch receiver

### LED HDTV with fully digital HDMI output

### 12V AM/FM/CD/DVD/USB A/V system with Bluetooth® and HDMI

### Stainless steel range with glass cover

### Stainless steel microwave with exhaust fan

### Hidden hinges

### Rain-proof EZ Breeze™ 350CFM bathroom power vent

### (patent pending, a class exclusive)

### Rooftop and ground solar prep by Go Power® (an industry first!)

### Upgraded friction hinge entrance door with XL grab handle

### Wireless remote control system

### Keyed Alike™ lock system

### Backup camera prep (rear observation)

### Bluetooth speaker prep

## OPTIONS

### Canadian Standards

### 16-inch Goodyear® tire upgrade

### 50 amp service and 2nd A/C prep



Find out more at [Jayco.com](http://Jayco.com)

