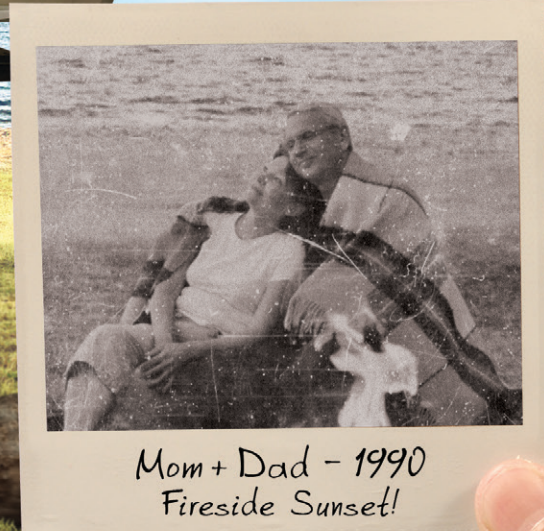


2019 PINNACLE



2019 PINNACLE



Mom + Dad - 1990  
Fireside Sunset!









# PINNACLE

## THE PEAK OF LUXURY

There's a lot to love in the 2019 lineup—sharp exterior options, a slide within a slide, and the industry's first walk-in shower. Campers can count on the same premium travel experience they've come to expect from Pinnacle.



36KPTS ENTERTAINMENT CENTER



36SSWS HALLWAY



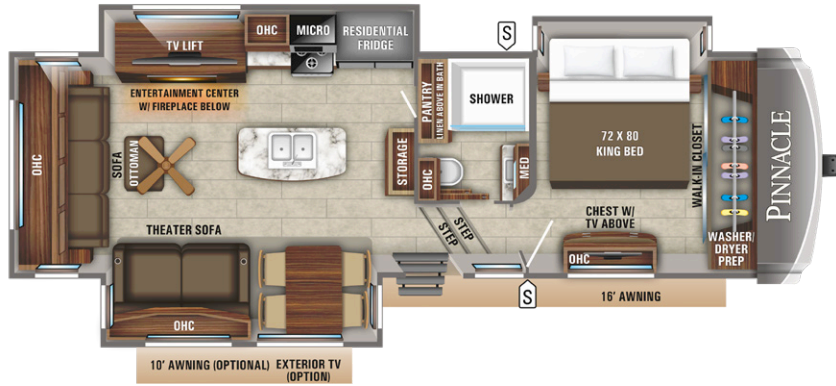
36KPTS WALK-IN SHOWER

36KPTS DOORSIDE STORAGE

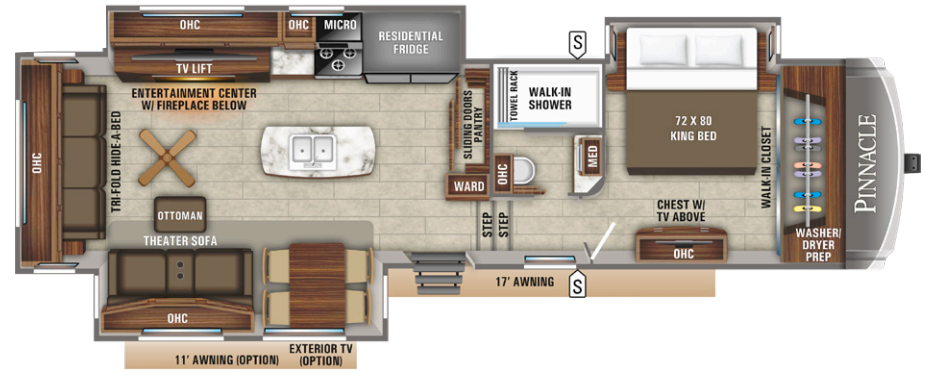




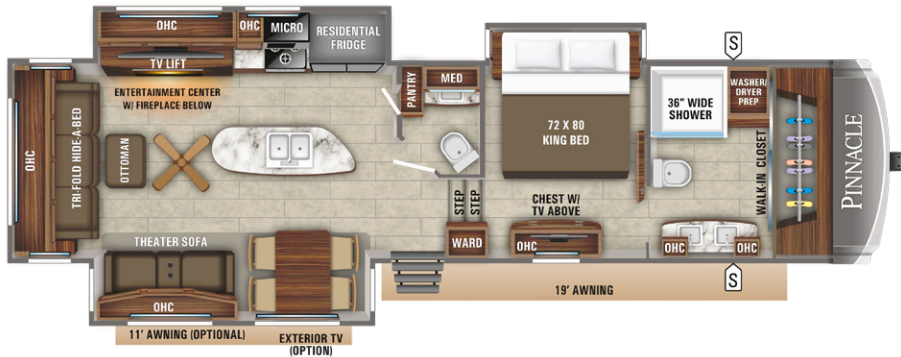
# PINNACLE FLOORPLANS



**32RLTS** OPTIONS: A, B, D



**36KPTS** OPTIONS: A, B, C, D



**36FBTS** OPTIONS: A, B, C, D



**37MDQS** OPTIONS: A, B, D

## SPECS

FLOORPLAN	TOTAL EXTERIOR LENGTH	EXTERIOR TRAVEL LENGTH*	EXTERIOR WIDTH	EXTERIOR HEIGHT (WITH A/C)	INTERIOR HEIGHT (UPPER DECK)	UNLOADED VEHICLE WEIGHT	DRY HITCH WEIGHT	GROSS VEHICLE WEIGHT RATING	CARGO CARRYING CAPACITY	FRESH WATER CAPACITY (INCLUDES WATER HEATER)	GREY WASTE WATER CAPACITY**	BLACK WASTE WATER CAPACITY	SLEEP CAPACITY
<b>32RLTS</b>	TBD	TBD	8' 6"	TBD	TBD	TBD	TBD	TBD	TBD	TBD	TBD	TBD	TBD
<b>36FBTS</b>	40' 8"	39' 4"	8' 6"	13' 5"	6' 11"	13,535	2,730	16,500	2,965	85	87**	87**	3 - 4
<b>36KPTS</b>	41' 0"	39' 8"	8' 6"	13' 5"	6' 11"	13,455	2,815	16,500	3,045	85	87**	50	3 - 4
<b>36SSWS</b>	39' 11"	38' 7"	8' 6"	13' 4"	6' 10"	13,805	3,145	16,750	2,945	85	87**	50	4 - 5
<b>37MDQS</b>	41' 8"	40' 3"	8' 6"	13' 5"	6' 11"	14,330	3,290	16,995	2,665	85	87**	50	6 - 8
<b>37RLWS</b>	41' 6"	40' 3"	8' 6"	13' 5"	6' 11"	14,110	2,960	16,750	2,640	85	87**	50	4 - 5
<b>38FLWS</b>	42' 2"	40' 10"	8' 6"	13' 6"	6' 11"	14,235	3,060	16,995	2,760	85	107**	37	5 - 7
<b>38REFS</b>	43' 1"	41' 9"	8' 6"	13' 5"	6' 11"	13,870	2,670	16,995	3,125	85	87**	50	5 - 7

\*Distance from the pin box to the bumper; total exterior length may be longer.

\*\*Split tank

It is important for your safety and enjoyment that your tow vehicle be adequately sized and equipped to tow and handle the GVWR of the RV you select. Review weights and rating of your tow vehicle and consult a competent advisor for questions or advice. Whether you are new to RVing or a veteran, get a feel for the performance of your tow vehicle before heading out on the roadways. When you tow an RV, you must drive differently than when you drive a single vehicle. Practice hooking up, driving, backing up and braking in a safe environment or seek out professional instruction. Jayco affixes a weight label to each RV which lists weight information for that vehicle. See specifications chart.

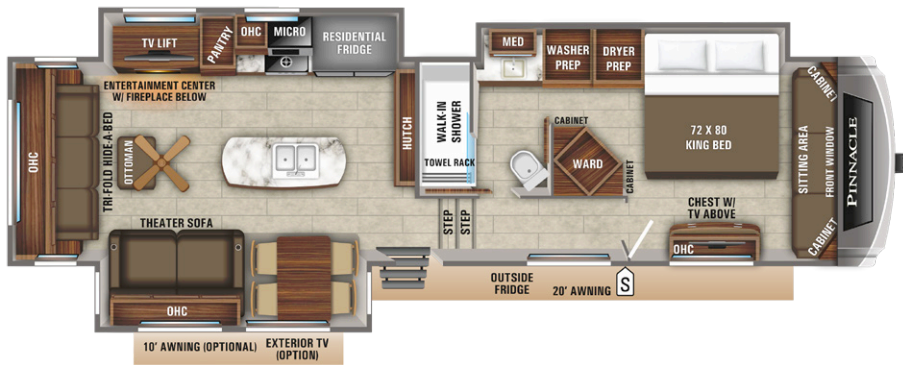
**Unloaded Vehicle Weight (UVW):** Sometimes referred to as "Dry Weight," UVW means the typical weight of this trailer as built at the factory; The UVW, as used in product literature and other promotional materials, does not include cargo, fresh water, propane, options or dealer-installed accessories.

**Gross Vehicle Weight Rating (GVWR):** GVWR means the maximum permissible weight of the trailer, including the UVW plus personal items, all cargo, fluids, options and dealer-installed accessories. The GVWR is equal to or greater than the sum of the UVW and the CCC.

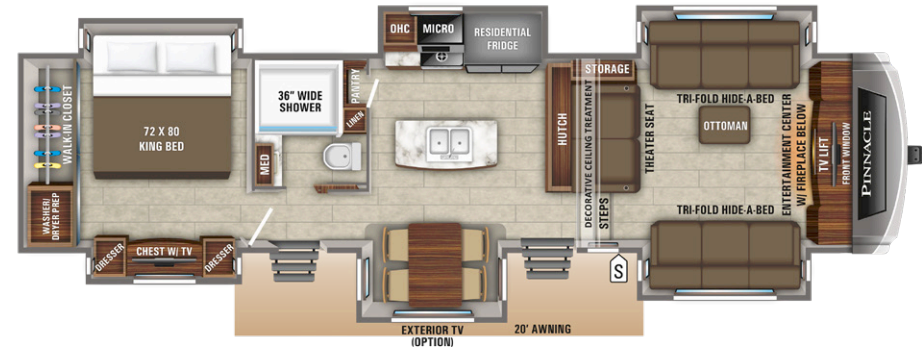
**Cargo Carrying Capacity (CCC):** CCC means the maximum weight of personal items, food, fresh water, propane, tools, other cargo and dealer-installed accessories that can be carried by the trailer. CCC is equal to or less than GVWR minus UVW. The addition of options will decrease the CCC.

**Hitch Weight (HW):** The hitch weight, as used in product literature and other promotional materials, does not include cargo, fresh water, propane gas, options or dealer-installed accessories. The addition of these types of items will either add to or subtract from the stated hitch weight.

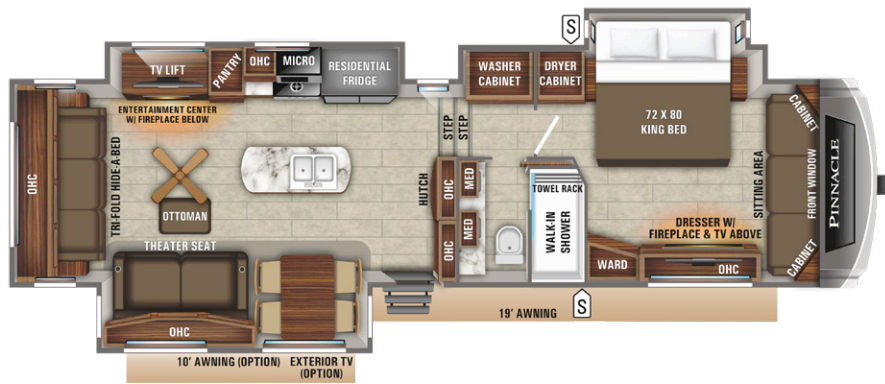




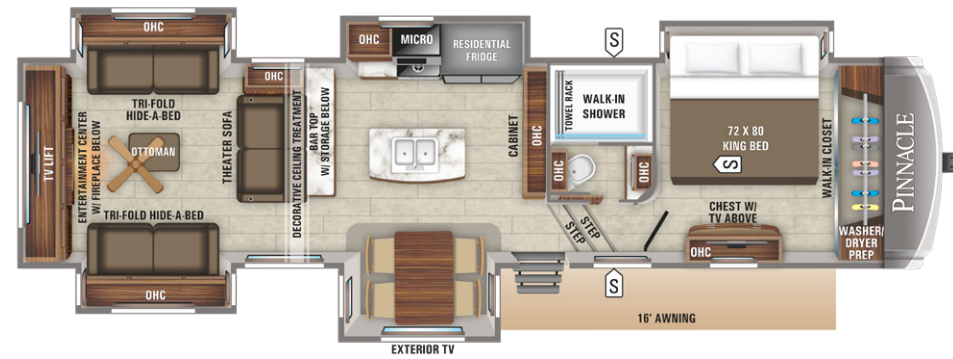
**37RLWS OPTIONS: A, B, D**



**38FLWS OPTIONS: A, B**



**36SSWS OPTIONS: A, B, D**



**38REFS OPTIONS: A, B**

**LEGEND**

- STORAGE
- TRAILER HITCH
- LAV BATHROOM SINK
- MED MEDICINE CABINET
- MICRO MICROWAVE
- OHC OVERHEAD CABINETS
- FRIDGE REFRIGERATOR
- WARD WARDROBE

**OPTIONS**

A	B	C	D

**INTERIOR DÉCOR**

<b>LATTE</b>			<b>CAPPUCCINO</b>		
	SOFA/CHAIR LEATHERETTE	MAIN ACCENT		SOFA/CHAIR LEATHERETTE	MAIN ACCENT
<b>GREYSTONE</b>			<b>ALL FLOORING</b>		
	SOFA/CHAIR LEATHERETTE	MAIN ACCENT		LINOLEUM	CARPET

**EXTERIOR OPTIONS**



STANDARD GRAPHICS



PREMIUM PAINT OPTION - CARBON STEEL



PREMIUM PAINT OPTION - DESERT SUN





36KPTS KITCHEN  
36SSWS BEDROOM



36SSWS SLIDE-IN SLIDE  
36SSWS KITCHEN HUTCH



36KPTS CAPPUCCINO FURNITURE



## PINNACLE LUXURY PACKAGE (MANDATORY)

6 point electric auto leveling system

Bedroom 15,000 BTU "Whisper Quiet" A/C

Backup camera/monitoring system prep

Carefree® power awning with LED light strip

Indoor/outdoor central vacuum system with kick pan

Magnum Truss™ XL6™ Roof System

HELIX Cooling System featuring a Jayco exclusive duct design, exterior-mounted A/C units, directional/closable A/C vents, and larger return air vents with user accessible filters

MORryde® StepAbove™ entrance steps

Bluetooth®/HDMI® high output entertainment system

Electric, thermostat controlled fireplace

LED exterior lighting

Soft close kitchen drawers

Stereo sound bar

Roof-mount satellite prep

Dishwasher prep

Oversized battery compartment

Fully painted and clear-coated front cap

Power kitchen vent with wall controls and rain sensor

Sidewall and roof mount solar prep

Whole coach water purification system

Full-timer kitchen storage system

Washer/dryer prep (accommodates stackable unit)

Gel 360 front cap, rear cap and premium high-gloss sidewalls

Big screen LED HDTVs in living areas

Jayco luxury sleep system with Simmons® residential foam-top mattress

Dual sun and blackout roller shades in living room

32 inch LED HDTV in bedroom

Residential Kingston Cherry hardwood cabinet doors, miter cut with 3 inch rails

Powered 50 amp cord reel

Freestanding table with 2 dinette chairs and 2 folding chairs

Stainless steel over the range microwave oven

OneControl® digital command system for levelers, slideouts, awnings and exterior lights

Blackout roller shades in bedroom

Furriion® Executive Chef™ built-in wall oven

LED backlit crown molding in living area and kitchen

## CUSTOMER VALUE PACKAGE (MANDATORY)

15,000 BTU "Whisper Quiet" A/C

12 inch Magnum™ Frame System

Arched interior ceiling with 82 inch upper deck interior height

Bath skylight

Bathroom power vent

Bedsread

Oversized folding exterior grab handle

Frameless G20 dark tinted windows

LED interior lighting

Slam-latch™ baggage doors

Sofa and bed pillows

Solid-surface kitchen countertops

Keyed Alike™ exterior doors

## 5-STAR HANDLING PACKAGE (MANDATORY)

Dexter® 7,000-lb. axles with Nev-R-Adjust® brakes

Dexter heavy-duty shackles with wet bolt fasteners and bronze bushings

MORryde pin box

MORryde CRE4100™ suspension system

Goodyear® 16-inch BEAST tires

## STANDARD EXTERIOR EQUIPMENT

Wide body, 102 inch frame

Wide stance front landing gear

Stronghold VBL™ vacuum-bonded, laminated walls

Climate Shield™: Enclosed, insulated, heated underbelly. 40,000 BTU furnace. Astro-Foil™ in roof and floors

Aerodynamic front and rear cap with LED lights

Seamless composite roof covering

12 inch I-Class™ cambered, structural-steel I-beams

Completely enclosed and protected slideout mechanisms

Frameless, dark tinted, safety glass windows

30 inch x 78 inch entry door with oversized window

Screen door with kick plate

Exterior marine-grade speakers (2)

Enclosed, protected basement drop frame

Cable TV and outlet in basement

Convenient dual propane compartment (60 lb. capacity) on off-doorside

Doorside compartment framed and vented for third propane bottle

Stor-Galore™ pass-through basement storage

Heated, enclosed Uni-Dock™ utility center

50 amp power service

75 gallon fresh water tank

50 gallon black tank capacity minimum (N/A 37FLWS)

Cable/satellite TV prep

Digital TV antenna

Outside LP grill prep

Under-mounted spare tire

Roof ladder

Hitch light

Upper deck slideout convenience light

EZ-Cord™ cargo area extension cord access port

Cargo area storage system (select models)

## STANDARD INTERIOR EQUIPMENT

Custom residential miter cut cherry cabinet doors with hidden hinges

Hardwood cherry cabinet stiles

Hardwood slideout fascia

Residential-style pantry with pullout drawers

Soft close steel ball-bearing drawer guides, 75 lb. capacity with full extension

Large split, under-mounted, stainless steel sink

Residential-grade, pullout kitchen faucet

Water heater bypass

21 cu. ft. residential refrigerator with water/ice in door

1,200 watt inverter with residential refrigerator

Furriion Executive Chef gas cooktop

Residential-grade wood-plank vinyl flooring

Shaw® R2X® stain-resistant residential carpeting

Toe kick night lights in bedroom, bathroom and kitchen

90 amp power center with Charge Wizard™

Command Center for switches

Closeable and directional A/C vents

Prep for third A/C (N/A 36SSWS)

Tri-fold hide-a-bed sofa(s) with ottoman

Powered reclining theater seat with heat and massage

Ceiling fan (N/A 38FLWS)

Decorative kitchen island ceiling feature

Crown molding with LED lighting in main living/kitchen areas

LED ceiling lights throughout

78 inch height in living area slideout rooms

Porcelain bath stool with foot flush

Under-mounted stainless steel bathroom sink

Utility hooks in bathroom

Skylight above shower

Full trunk, under bed storage

Walk-in style front closet with dual hanging rods and cedar lining

Mullion-style front wardrobe doors

Bedroom dresser storage

Bedroom slide fascia with built in night stands

## OPTIONS

Customer Value Package (MANDATORY)

Customer Value Package with heat pump

Luxury Package (MANDATORY)

5-Star Handling Package (MANDATORY)

18 cu. ft. gas/electric refrigerator with icemaker

Simmons® Beauty Sleep® 60 inch x 80 inch queen residential foam-top mattress

Euro bunk (N/A 38FLWS, 38REFS)

Two recliners in place of theater seats (36KPTS, 36FBTS)

Wireless backup camera/monitoring system

Built-in outdoor 32 inch TV

Third 15,000 BTU A/C (low profile) in front living room (38FLWS)

Generator prep

5,500 watt generator

Dual pane, tinted safety glass windows

Second power awning (most models)

Slideout awning covers

Outside gas grill

Convection microwave

Sani-con® Turbo waste evacuation system

2 inch cargo accessory receiver



## 5-STAR HANDLING PACKAGE

The 5 Star Handling Package is a Jayco exclusive, a powerful blend of high-end components that make pulling a luxury fifth wheel a breeze.



### DEXTER AXLES WITH NEV-R-ADJUST BRAKES

The Benchmark of the trailer industry!



### MORRYDE PIN BOX

Allows pin box to travel forward and backward as well as side-to-side, creating a smoother tow.



### DEXTER HEAVY-DUTY SHACKLES WITH WET BOLT FASTENERS AND BRONZE BUSHINGS

Resists the wear-and-tear of towing.



### MORRYDE RUBBERIZED SUSPENSION SYSTEM

Better absorbs and isolates road shock.



### GOODYEAR BEAST TIRES

Made in the U.S.A. and featuring the patented Durawall® technology.



## JAYCO'S ROOF vs OTHER ROOFS

4,500 POUNDS ON A JAYCO ROOF VS. OTHER ROOFS

**50% Stronger!**



## CLIMATE SHIELD

Extend your camping season with the Jayco Climate Shield.

It protects against extreme heat and extreme freezing—even in temperatures as high as 100 degrees or as low as zero degrees (Fahrenheit).\*

#### LIVING ROOM

0°F 70°F  
100°F 69°F

#### KITCHEN

0°F 69°F  
100°F 70°F

#### BATHROOM

0°F 71°F  
100°F 68°F

#### HOLDING TANK

0°F 60°F  
100°F 72°F

#### BEDROOM

0°F 71°F  
100°F 71°F

\*Jayco tested fifth wheels in zero degrees F and 100 degrees F weather over an extended period of time in a controlled environment, and all functions of the coach were fully operational. Testing was done in a completely controlled environment; therefore, temperatures during testing may not represent actual temperatures in nature and cannot account for elements such as wind or moisture. In actual use, unit may not perform as well. Supplier of cooling components does not guarantee anything better than 20 degrees difference from ambient temperature. In addition, outside components are subject to freezing and require steps to properly insulate. Jayco's limited warranty does not cover damage caused by freezing. To learn more about Climate Shield and testing done by Jayco, visit [www.jayco.com](http://www.jayco.com).



Meet your Jayco Dealer \_\_\_\_\_

Travel with Confidence \_\_\_\_\_

Follow Jayco  
#Jayco50



Jayco, Inc. | P.O. Box 460 | Middlebury, IN 46540 See dealer for further information and prices. All information in this brochure and on [www.jayco.com](http://www.jayco.com) is the latest available at the time of publication approval. Jayco reserves the right to make changes and to discontinue models without notice or obligation. Photography may show optional equipment or props used for decoration purposes only. RVs built for sale in Canada may differ to conform to Canadian codes. JAYCO and the JAYCO BIRD IN FLIGHT are registered trademarks of Jayco, Inc. Printed in USA 50K RB 07/18 © 2018 Jayco, Inc. 274883



At Jayco, we build our RVs to handle every adventure, then back them with our industry-leading 2-year limited warranty. We, with support from our select partners, have you covered for **2 camping seasons**. That's **730 days**. You won't find a better warranty in the business, because the only strings we attach are those that deliver the ultimate in reliability. That's the Jayco difference. So go explore. For a copy of our 2-year limited warranty with complete terms and conditions, please contact your local Jayco dealer.