



# 2019 HUMMINGBIRD



Mike & Sara  
Crystal Lake 2003



**2**  
**YEAR**  
LIMITED  
WARRANTY

# HUMMINGBIRD



17RB MAIN INTERIOR



17RB STORAGE



17RB POWER AWNING WITH MULTI-COLORED LED LIGHTS



17RB SEAMLESS KITCHEN COUNTERTOPS



17RB 2 BURNER RECESSED COOKTOP



ROOF AND A-FRAME MOUNTED SOLAR PREP



GOODYEAR® TIRES WITH DEXTER® TORSION AXLES AND SELF ADJUSTING BRAKES



A-FRAME MOUNTED 2-BIKE CARRIER (OPTIONAL)



LOW PROFILE 13,500 BTU A/C (N/A 10RK)



INSULATED AND ENCLOSED UNDERBELLY WITH ADDED LAYER OF ASTRO-FOIL™

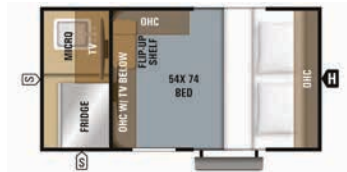


10RK EXTERIOR



10RK INTERIOR

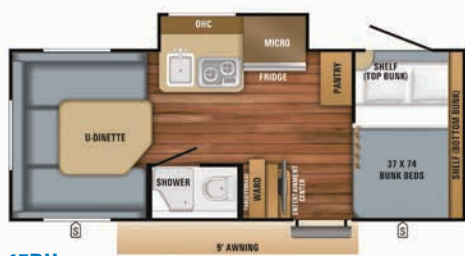
# HUMMINGBIRD FLOORPLANS



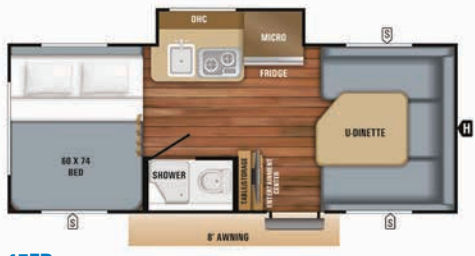
10RK



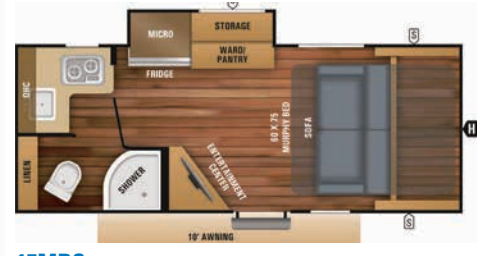
16MRB



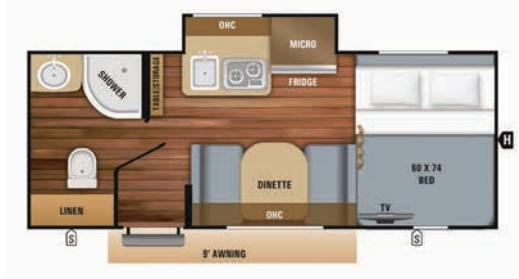
17BH



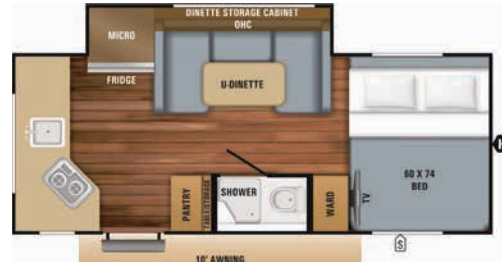
17FD



17MBS

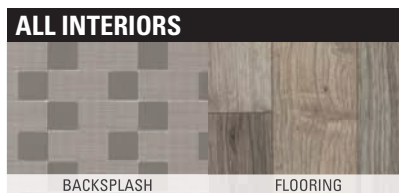


17RB



17RK

## INTERIOR DÉCOR



## SPECS

FLOORPLAN	EXTERIOR TRAVEL LENGTH	EXTERIOR WIDTH	EXTERIOR HEIGHT W/AC	INTERIOR HEIGHT	UNLOADED VEHICLE WEIGHT (LBS.)	DRY HITCH WEIGHT (LBS.)	GROSS VEHICLE WEIGHT RATING (LBS.)	CARGO CARRYING CAPACITY (LBS.)	FRESH WATER CAPACITY (GAL.) (INCLUDES WATER HEATER)	GREY WASTE WATER CAPACITY (GAL.)	BLACK WASTE WATER CAPACITY (GAL.)	SLEEP CAPACITY
10RK	13' 0"	6' 8"	7' 8"	4' 5"	1,545	180	2,000	455	25.6	N/A	N/A	2
16MRB	19' 10"	8' 1"	9' 1"	6' 6"	2,780	315	3,750	970	31.6	25.4	25.4	2
17BH	19' 10"	8' 1"	9' 2"	6' 6"	3,015	385	3,950	935	31.6	25.4	25.4	4 - 6
17FD	19' 9"	8' 1"	9' 1"	6' 6"	2,845	325	3,750	905	31.6	25.4	25.4	4
17RB	19' 9"	8' 1"	9' 1"	6' 6"	2,890	315	3,750	860	31.6	25.4	25.4	3 - 4
17RK	19' 10"	8' 1"	9' 2"	6' 6"	2,980	310	3,950	970	31.6	25.4	25.4	3 - 4
17MBS	19' 10"	8' 1"	9' 0"	6' 6"	2,990	280	3,950	960	31.6	25.4	25.4	2

**Unloaded Vehicle Weight (UVW):** Sometimes referred to as "Dry Weight," UVW means the typical weight of this trailer as built at the factory. The UVW, as used in product literature and other promotional materials, does not include cargo, fresh water, propane, options or dealer-installed accessories.

**Gross Vehicle Weight Rating (GVWR):** GVWR means the maximum permissible weight of the trailer, including the UVW plus personal items, all cargo, fluids, options and dealer-installed accessories. The GVWR is equal to or greater than the sum of the UVW and the CCC.

**Cargo Carrying Capacity (CCC):** CCC means the maximum weight of personal items, food, fresh water, propane, tools, other cargo and dealer-installed accessories that can be carried by the trailer. CCC is equal to or less than GVWR minus UVW. The addition of options will decrease the CCC.

**Hitch Weight (HW):** The hitch weight, as used in product literature and other promotional materials, does not include cargo, fresh water, propane gas, options or dealer-installed accessories. The addition of these types of items will either add to or subtract from the stated hitch weight.

It is important for your safety and enjoyment that your tow vehicle be adequately sized and equipped to tow and handle the GVWR of the RV you select. Review weights and rating of your tow vehicle and consult a competent advisor for questions or advice. Whether you are new to RVing or a veteran, get a feel for the performance of your tow vehicle before heading out on the roadways. When you tow an RV, you must drive differently than when you drive a single vehicle. Practice hooking up, driving, backing up and braking in a safe environment or seek out professional instruction. Jayco affixes a weight label to each RV which lists estimated weight information for that vehicle. See specifications chart above.

## STANDARDS AND OPTIONS

### STANDARD EXTERIOR EQUIPMENT

Aerodynamic, rounded profile with front and rear black diamond plating (N/A 10RK)
Enhanced graphics package
One piece fiberglass roof
Stronghold VBL™ vacuum-bonded laminated floor and sidewalls (N/A 10RK)
American-made Norco® frame with integrated A-frame
American-made Dexter Single axle with rubber-torsion suspension
G-20 tinted safety glass windows
Marine-grade exterior speakers (2) (N/A 10RK)
Impact-resistant, powder coated, black aluminum fenders
U-channel drip rail over slideout (N/A 10RK)
30 amp service with detachable power cord
20 lb. propane bottle with auto regulator with cover
Outside grill propane quick-connect port
Exterior TV bracket with cable and satellite hookups (N/A 10RK)
Rear camera backup prep
26 inch wide entry doors with gas strut and frosted window (N/A 10RK)
25.6 gallon fresh water tank
25.4 gallon black and gray tanks (N/A 10RK)
Aluminum entry step(s) (N/A 10RK)
Low profile 13,500 BTU A/C (N/A 10RK)
A-Frame mounted Solar Prep
Keyed-Alike™ entry and baggage doors

### STANDARD INTERIOR EQUIPMENT

Wall to wall Armstrong® vinyl flooring (N/A 10RK)
Folding 2' x 4' picnic table (N/A 10RK)

Screwed, glued, mortise and tenon cabinetry
Smoked glass decorative inserts (select overhead cabinets) (N/A 10RK)
Ball-bearing drawer glides with 75 lb. capacity
LED lighting throughout
2 burner recessed cooktop with glass cover (N/A 10RK)
Plywood dinette, bed bases, and bunk bases (N/A 10RK)
High density dinette cushions with vinyl backing (N/A 10RK)
Jayco exclusive teddy bear mattress
2.1 amp USB port in all models
Decorative window treatments with pleated nightshades (N/A 10RK)
Residential-style seamless countertops
110V/USB tower (N/A 10RK)

### CUSTOMER VALUE PACKAGE

#### (MANDATORY, N/A 10RK)

American-made, nitro-filled Goodyear® radial tires
Aluminum rims
Self-adjusting electric brakes
Solar prep (roof mounted)
Stabilizer jacks with pads (4)
6 gallon gas/electric DSI water heater
Folding assist handle at entry door
Black tank flush
Outside shower
3 cu. ft. 2 way refrigerator
18,000 BTU furnace
AM/FM/CD/DVD/Bluetooth® stereo with speakers
Convection microwave
Power awning with LED light
Enclosed underbelly with added layer of Astro-Foil™ insulation
Power tongue jack

### 10RK CUSTOMER VALUE PACKAGE (MANDATORY)

15 inch Goodyear off-road mud tires
1.7 cu. ft. 12/120V 2 way refrigerator
Aluminum rims
Enclosed underbelly with added layer of Astro-Foil™ insulation
Fan-Tastic Fan power roof vent
Furrion® portable bluetooth speaker
Microwave
Power tongue jack
Self-adjusting electric brakes
Solar prep (roof mounted)
Spare tire and carrier
Stabilizer jacks with pads (2)
120V/12V 2 way 24" LED TV

### OPTIONS

Customer Value Package (MANDATORY)
Baja Package: 15 inch off-road mud tires, additional 5 inch of ground clearance and double entry step (N/A 10RK)
24 inch LED TV (N/A 10RK and 17MBS)
32 inch LED TV (17MBS)
Goodyear spare tire (N/A 10RK)
Goodyear spare tire (Baja Package) (STD on 10RK)
2-bike carrier rack (A-frame mounted)
Exterior grill
8,000 BTU side mount A/C (10RK only)
30 lb. propane bottle with auto regulator and cover



Scan for complete towing guide resources



TRAVEL WITH  
CONFIDENCE

At Jayco, we build our RVs to handle every adventure, then back them with our industry-leading 2-year limited warranty. We, with support from our select partners, have you covered for **2 camping seasons**. That's **730 days**. You won't find a better warranty in the business, because the only strings we attach are those that deliver the ultimate in reliability. That's the Jayco difference. So go explore. For a copy of our 2-year limited warranty with complete terms and conditions, please contact your local Jayco dealer.



Jayco, Inc. | P.O. Box 460 | Middlebury, IN 46540 © RVIA

See dealer for further information and prices. All information in this brochure and on [www.jayco.com](http://www.jayco.com) is the latest available at the time of publication approval. Jayco reserves the right to make changes and to discontinue models without notice or obligation. Photography may show optional equipment or props used for decoration purposes only. RVs built for sale in Canada may differ to conform to Canadian codes. JAYCO and the JAYCO BIRD IN FLIGHT are registered trademarks of Jayco, Inc. Printed in USA 60K 7/2018 ©2018 Jayco, Inc. 274874

Follow Jayco #Jayco50



Meet your Jayco Dealer \_\_\_\_\_

We work hard—so you can play hard. From finding the perfect Jayco for your family to providing flexible financing options and full-service support, we're here to help.