

2018 HOLIDAY RAMBLER ADMIRAL/ADMIRAL XE

# ADMIRAL/ADMIRAL XE

2018 HOLIDAY RAMBLER  
CLASS A GAS



HOLIDAY RAMBLER  
REVGROUP

# ADMIRAL XE

## TOP FEATURES

- High Gloss Cabinetry and Doors w/Hidden Hinges
- Bedroom LED TV
- High Gloss Gel Vetrolite® Ultra-Thick Fiberglass Skin (No Wood Substrate)
- Intense Halogen Projector Headlamps
- Side Swing Diesel Style Aluminum Luggage Doors
- Power Awning w/LED Light Strip
- Back-Up & Side-View Camera Package
- Exterior Entertainment Center
- Tinted Frameless Windows
- Soft-Touch Vinyl Ceiling w/Ducted Air
- Full Basement Storage
- Exterior Chrome Package



Admiral XE 30U shown in Chocolate Truffle décor with Italian Sienna High Gloss wood cabinetry.



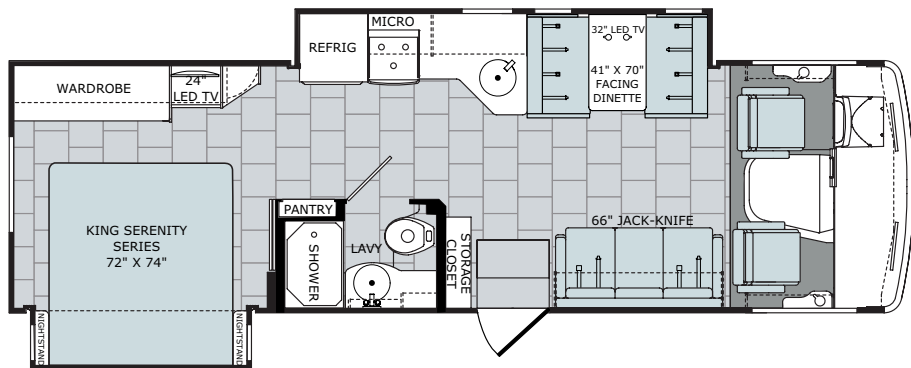
This is living.

The Holiday Rambler Admiral XE is your means to experiencing a lifestyle on the road that is both satisfying and indulgent. The Admiral XE gives you options, from three unique floorplans and two elegant décor selections to your pick of glazed dark cherry or Italian sienna wood finishes. Backed by top features, like full basement storage, a soft-touch vinyl ceiling and high-gloss Vetrolite® fiberglass skin, this is one motorhome that doesn't skimp on the luxuries that Holiday Rambler full-time RVers have come to expect.

# ADMIRAL XE FLOORPLANS

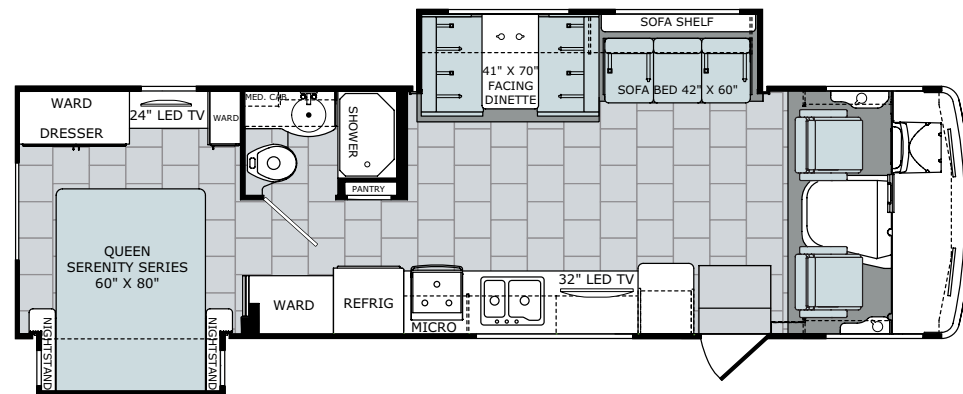
30P

Options: 113, 186



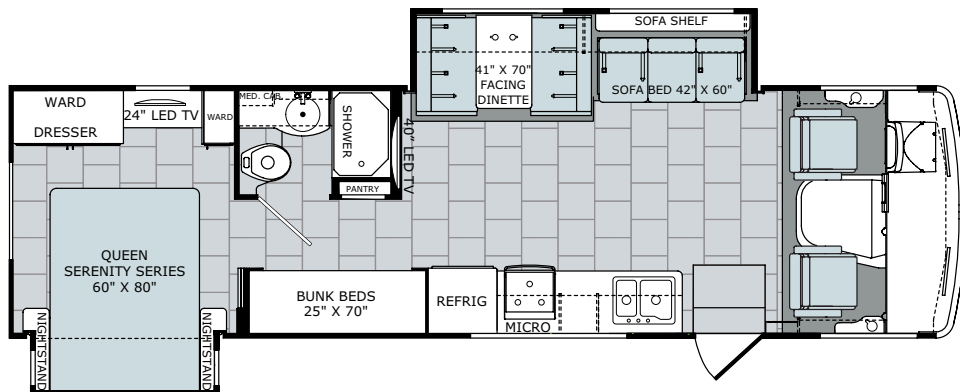
31A

Options: 186



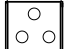
31E

Options: 097, 157, 186




## Available Options

 OPT. 097  
BUNK AREA  
19" LED TV

 OPT. 113  
3-BURNER  
COOKTOP  
W/OVEN

 OPT. 157  
DUAL  
MONITORS

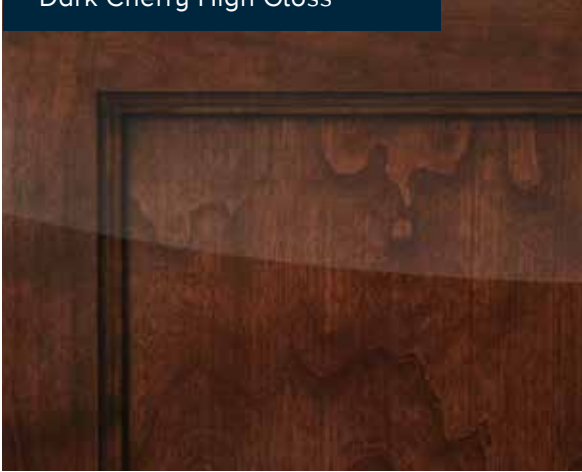
 OPT. 186  
DRIVER/PASSENGER  
PEDESTAL TABLE



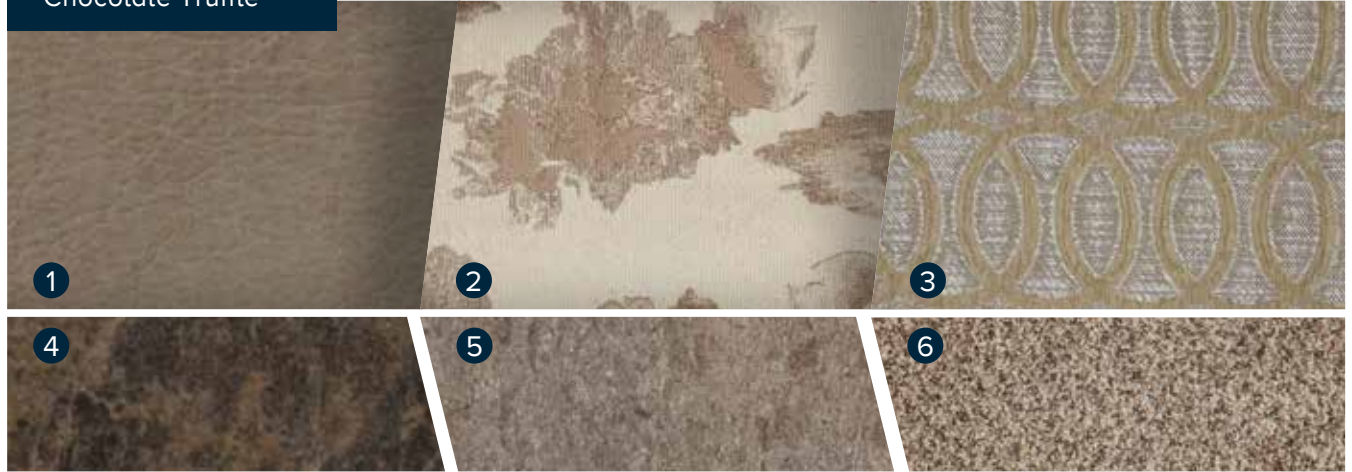
Admiral XE 31E bunk beds convert to a full length wardrobe.

# ADMIRAL XE DÉCOR & EXTERIOR OPTIONS

Dark Cherry High Gloss



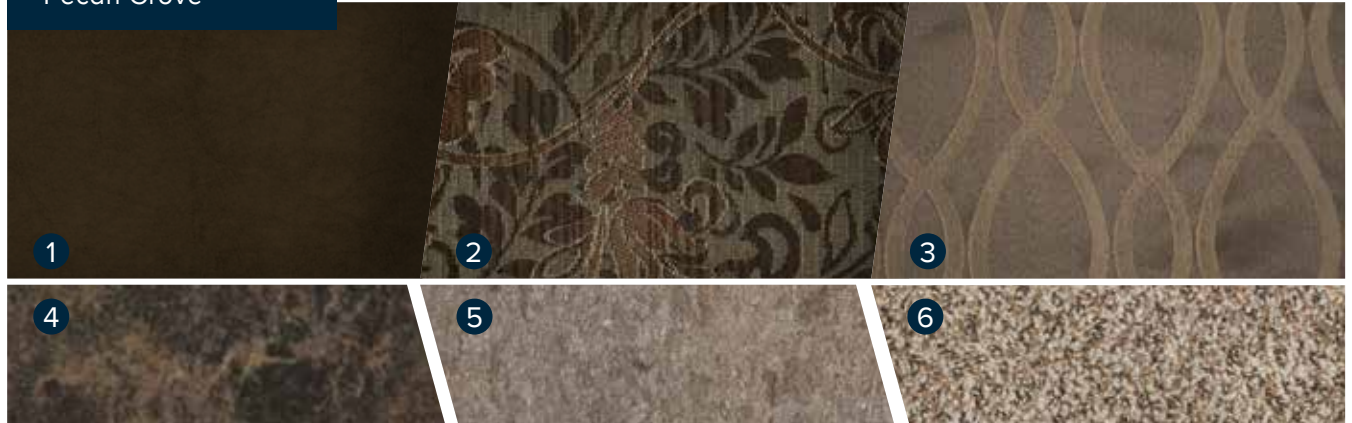
Chocolate Truffle



Italian Sienna High Gloss



Pecan Grove



1 | Sofa 2 | Accent 3 | Bedspread 4 | Countertop 5 | Flooring 6 | Carpet

Carmine



Denim



# ADMIRAL

## TOP FEATURES

- High Gloss Cabinetry and Doors w/Hidden Hinges
- Bedroom LED TV
- High Gloss Gel Vetrolite® Ultra-Thick Fiberglass Skin (No Wood Substrate)
- Intense Halogen Projector Headlamps
- Side Swing Diesel Style Aluminum Luggage Doors
- Power Awning w/LED Light Strip
- Back-Up & Side-View Camera Package
- Exterior Entertainment Center
- Tinted Frameless Windows
- Soft-Touch Vinyl Ceiling w/Ducted Air
- Full Basement Storage
- Exterior Chrome Package

## LX PACKAGE

- Living Area Solid Surface Tops
- Tile Backsplashes
- Latitude Awning
- Optional Residential Refrigerator
- Auto Gen Start
- Upgraded Suspension & Sway Bar
- 1200W Inverter
- High Gloss Hardwood Ceiling Feature



Admiral 31B shown in Chocolate Truffle décor with Dark Cherry High Gloss wood cabinetry.



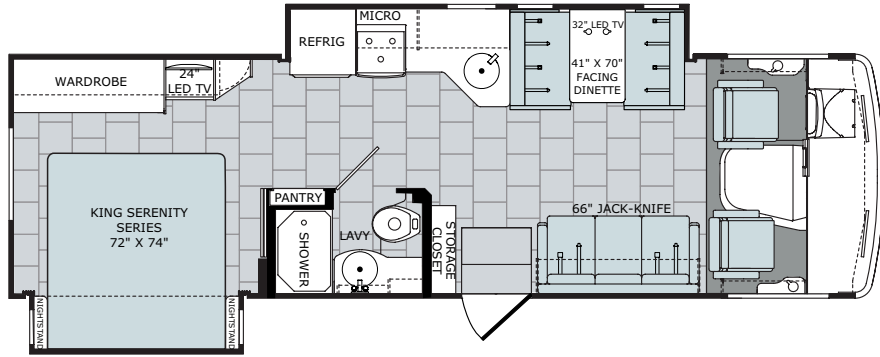
This is living.

Holiday Rambler's 2018 Admiral leads the way with whole-coach amenities that are sure to make it stand out in even the most exclusive of luxury RV resorts. From a soft-touch vinyl ceiling to premium constructed furniture and LED interior task lighting, these motorhomes are flush with upgraded accents that will have you discovering all the attention to detail for years to come. Of course, you won't need to take a step inside before appreciating the exterior's high-gloss Vetrolite® ultra-thick fiberglass skin with full body paint option.

# ADMIRAL FLOORPLANS

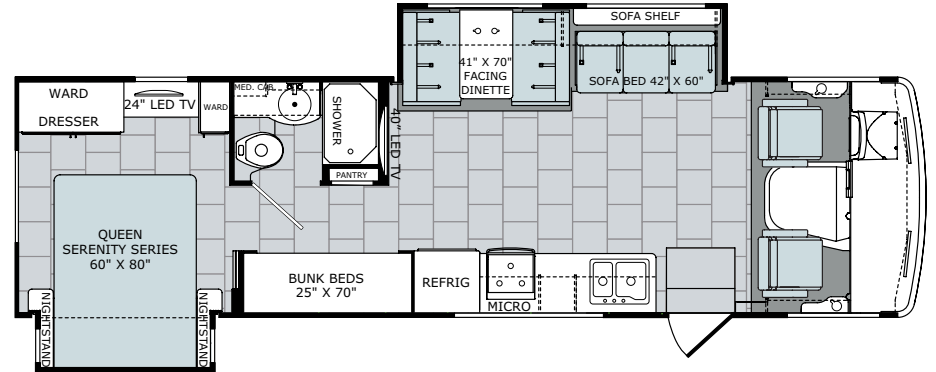
30U

Options: 113, 144, 186



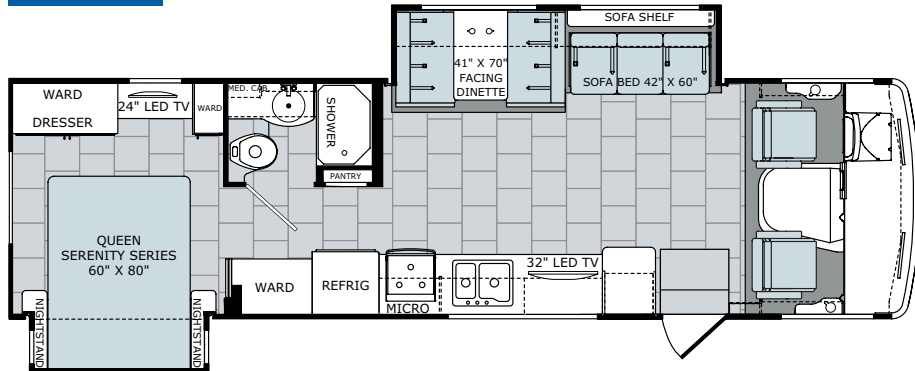
31B

Options: 097, 144, 157, 186



31W

Options: 144, 186



## Available Options



OPT. 097  
BUNK AREA  
19" LED TV



OPT. 113  
3-BURNER  
COOKTOP  
W/OVEN



OPT. 144  
RESIDENTIAL  
REFRIGERATOR



OPT. 157  
DUAL  
MONITORS



OPT. 186  
DRIVER/PASSENGER  
PEDESTAL TABLE



# ADMIRAL DÉCOR & EXTERIOR OPTIONS

Dark Cherry High Gloss



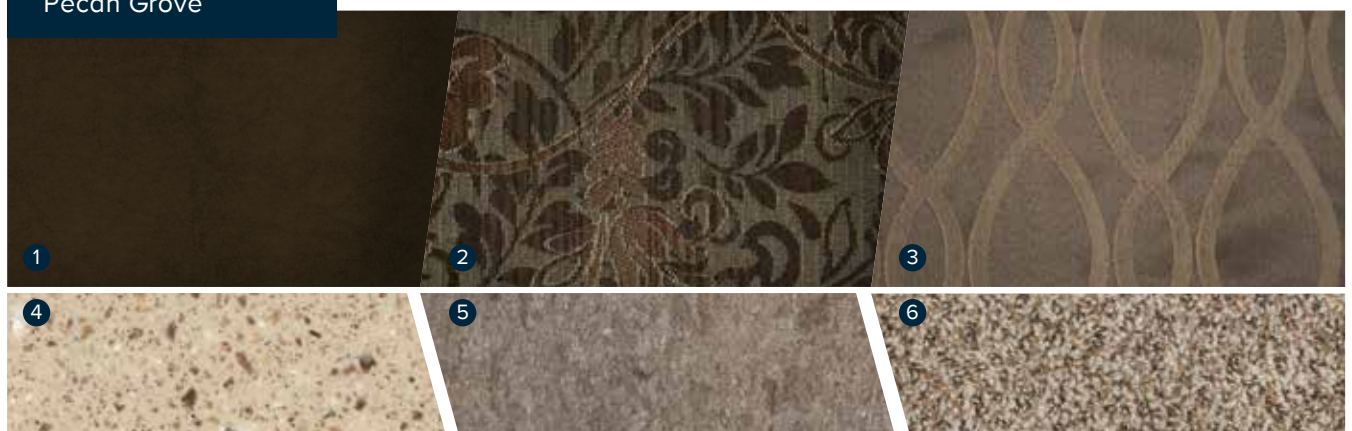
Chocolate Truffle



Italian Sienna High Gloss



Pecan Grove



1 | Sofa 2 | Accent 3 | Bedspread 4 | Countertop 5 | Flooring 6 | Carpet



Canyon

Optional Full Body Paint

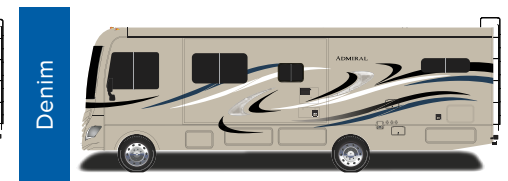


Luxor

Optional Full Body Paint



Carmine



Denim

# ADMIRAL XE/ADMIRAL STANDARDS & OPTIONS

## ADMIRAL XE STANDARD & OPTIONS

### INTERIOR THROUGHOUT

- 12V Water Pump, Demand Operation
- 15,000 Btu/h Ducted Air Conditioner w/Chille Grille
- 6 Gallon Propane Water Heater w/Electronic Ignition
- AC/DC Load Center w/12V Converter/Battery Charger
- Auxiliary Batteries w/Disconnect Switch
- Central Monitor Panel
- Dedicated Full-Length, Metallic A/C Ducting
- Deluxe Roller Bearing, Full Extension Drawer Guides & Transit-Ship Locks
- Flat Interior Ceiling
- GFI Circuit Protection
- Hardwood Flat Panel Cabinet Doors w/Euro Hinges
- Hide-A-Loft™ Drop Down Bed
- LED Interior Task Lighting
- Manual Night Shades in Living Room & Bedroom
- Ozite Lined Shelves in Overhead Cabinets
- Premium Constructed Furniture
- Soft-Touch Vinyl Ceiling w/Ducted Air
- Tuff-Pex™ Plumbing System
- Water Heater Bypass Valve
- Water Pump w/On/Off Switches at Lavatory
- Whole-Coach Water Filtration System

- **OPTIONS**
- Satellite Radio (Subscription Required)
- King Stationary Satellite System
- 19" Bunk Area TV (31E)
- Dual Flat Panel Bunk Monitors (31E)
- CSA Package (Canadian Specs)\*\*

### DRIVER CONVENIENCE

- (2) 12V Power Jack
- 3 Point Seat Belts at Driver & Front Passenger Seats
- Auxiliary Emergency Start Assist Switch on Dash
- Blind-Spot "Doggy" Window
- Cruise Control
- Driver/Passenger Reading Lights & Magazine Rack
- Driver/Front Passenger Soft-Touch Captain's Chairs w/Reclining Back/Slide Controls
- In-Dash AM/FM/Radio w/CD/DVD Player
- Power Windshield Privacy/Night Shade
- Radio Switch Main/Auxiliary Power
- Remote Heated Power Exterior Mirrors w/Turn Signals
- Side View Cameras

- **OPTIONS**
- Driver/Passenger Center Table

### LIVING ROOM

- 32" LED Wide-Screen TV w/Remote & DVD Player
- 40" LED Wide-Screen TV w/Remote & DVD Player (31E Only)
- Dream Dinette Table w/2 Cup Holders - Convertible for Sleeping

### GALLEY

- 3 Burner Range w/High Output/Piezo Igniter w/Cooktop Cover
- Ceiling - Power Vent Fan
- Dometic® 6 cu. ft. Refrigerator/Freezer
- Laminate Countertops w/Bull Nose T-Molding Edge
- Convection Microwave Oven w/Electronic Touch Pad
- Residential Size Double Bowl Sink (N/A 30P)
- Residential Size Single Bowl Sink (30P)

- **OPTIONS**
- 3 Burner Range w/High Output/Piezo Igniter & Oven w/Cooktop Cover (30P)

### BEDROOM

- 24" LED TV
- Bedspread w/Decorative Pillows, & Headboard
- Queen Bed w/Mattress
- Reading Lights in Bed Overhead Cabinet
- King Bed (30P)

### BATHROOM

- Bath Door w/Residential Passage Lock
- Dometic China Bowl Toilet w/Hand Sprayer
- Glass Shower Door
- Hand Towel Rack
- Large Sink w/Residential Style Faucet
- Medicine Cabinet w/Wood Construction
- Molded ABS Shower w/Surround
- Shower Head w/Flexible Hose Extension
- Skylight/Roof Vent w/12V Fan

### SAFETY/CONVENIENCE

- 10 lb. ABC Fire Extinguisher
- Carbon Monoxide, Propane, & Smoke Detector/Alarm
- Egress Window
- Exterior & Interior Entry Assist Handle
- Multiple Seatbelt Locations

### EXTERIOR THROUGHOUT

- Aluminum Bus-Style Side Swing Luggage Doors
- Aluminum Extruded Side Ramps
- Gelcoat w/Vinyl Graphics
- Dryseal™ Edge Coating (Water-Wicking Wall Edge Coating)
- Dual 6V Deep Cycle Auxiliary Batteries
- Exterior Entertainment Center
- Flexible Shower Hose & Faucet in Utility Compartment
- High Gloss Smooth Fiberglass Exterior
- Intense Halogen Projector Headlamps w/LED Accents
- Interlocking Aluminum Luggage Doors
- Large 1" (Inside Diameter) Water Tank Drain
- Onan® 4.0kW MicroQuiet Generator
- Power Awning w/LED Lighting
- Power Electric Step
- Seamless Beltline Trim
- Sewer Hose Storage in Bumper
- Pre-wired Solar Panel Connection
- Stainless Steel Wheel Simulators
- Tapered Slideout Box Tops & Debris Awnings
- Tinted Frameless Flush-Mounted Windows
- Toilet Tank San-T-Flush™ System
- Trailer Hitch w/7 Pin Electrical Hook-Up
- Tuff-Roof™ Low-Maintenance Roof System
- Valve Stem Extenders
- 4-Point Hydraulic Leveling System

- **OPTIONS**
- Onan® 5.5kW MicroQuiet Generator w/2 A/C's & 50A service
- Roof Vent Rain Covers
- Dual Glazed Tinted Frameless Flush-Mounted Windows

### SAFETY/CONVENIENCE

- 30 Amp, 30' Power Cord, Compartment Storage
- AC Duplex GFI Receptacle on Patio Side
- Amber Porch Light w/Interior Switch
- Automotive Safety Glass Windshield
- Entry Door w/Screen Door & Deadbolt Lock
- High Mounted LED Taillights
- Power Electric Step
- Rear Ladder

### STORAGE

- Molded Cross Link Polyethylene Battery Compartment w/Lid
- Slam Latch Luggage Doors & Bus-Class Aluminum Luggage Doors

### BODY STRUCTURE

- Corrosion Resistant Aluminum Tube Hull Framing
- Powerframes™ Precision, Welded Aluminum Interlocking Frames
- Powerlock System™
- Radiused & Cambered Entry Door
- Radius Roof w/Ducted A/C
- Raised Space Frame Foundation
- Solid Bead-Foam Engineered Fit Insulation™
- Vacu-Bond™ Integrated Walls

## ADMIRAL STANDARD & OPTIONS

### INTERIOR THROUGHOUT

- 12V Water Pump, Demand Operation
- 15,000 Btu/h Ducted Air Conditioner w/Chill Grille
- 6 Gallon Propane Water Heater w/Electronic Ignition
- AC/DC Load Center w/12V Converter/Battery Charger
- Auxiliary Batteries w/Disconnect Switch
- Central Monitor Panel
- Dedicated Full-Length, Metallic A/C Ducting
- Deluxe Roller Bearing, Full Extension Drawer Guides & Transit-Ship Locks
- Flat Interior Ceiling
- GFI Circuit Protection
- Hardwood Flat Panel Cabinet Doors w/Euro Hinges
- Hide-A-Loft™ Drop Down Bed
- LED Interior Task Lighting
- Manual Night Shades in Living & Bedroom
- Ozite Lined Shelves in Overhead Cabinets
- Premium Constructed Furniture
- Soft-Touch Vinyl Ceiling w/Ducted Air
- Tuff-Pex™ Plumbing System
- Water Heater Bypass Valve
- Water Pump w/On/Off Switches at Lavatory
- Whole-Coach Water Filtration System
- 1,200 Watt Inverter

- **OPTIONS**
- CSA Package (Canadian Specs)
- Satellite Radio (Subscription Required)
- Satellite Radio
- Winegard® Stationary Satellite System
- King Stationary Satellite System
- 19" Bunk Area TV (31B)
- Dual Flat Panel Bunk Monitors (31B)

### DRIVER CONVENIENCE

- (2) 12V Power Jack
- 3 Point Seat Belts at Driver/Passenger Seats
- Dash Auxiliary Emergency Start Assist Switch
- Blind-Spot "Doggy" Window
- Cruise Control
- Driver/Passenger Reading Lights & Magazine Rack
- Driver/Passenger Soft-Touch Captain's Chairs w/Reclining Back/Slide Controls
- In-Dash AM/FM/Radio w/CD/DVD Player
- Power Windshield Privacy/Night Shade
- Radio Switch Main/Auxiliary Power
- Remote Heated Power Exterior Mirrors w/Turn Signals
- Side View Cameras
- Upgraded Rear Suspension

- **OPTIONS**
- Driver/Passenger Center Table

### LIVING ROOM

- 32" LED Wide-Screen TV w/Remote & DVD Player
- 40" LED Wide-Screen TV w/Remote & DVD Player (31B Only)
- Dream Dinette Table w/2 Cup Holders - Convertible for Sleeping

### GALLEY

- 3 Burner Range w/High Output/Piezo Igniter & Oven w/Cooktop Cover
- Ceiling - Power Vent Fan
- Dometic® 6 cu. ft. Refrigerator/Freezer
- Solid Surface Counter Top
- Convection Microwave Oven w/Electronic Touch Pad
- Residential Double Bowl Sink (N/A 30U)
- Single Bowl Sink (30U)
- Tile Backsplash
- **OPTIONS**
- 3 Burner Range w/High Output/Piezo Igniter & Oven w/Cooktop Cover (30U)
- 11cf Residential Refrigerator

### BEDROOM

- 24" LED TV
- Bedspread w/Decorative Pillows, & Headboard
- Queen Bed w/Mattress (31B, 31W)
- King Bed w/Mattress (30U)
- Reading Lights in Bed Overhead Cabinet

### BATHROOM

- Bath Door w/Residential Passage Lock
- Dometic China Bowl Toilet w/Hand Sprayer
- Glass Shower Door
- Hand Towel Rack
- Large Sink w/Residential Style Faucet
- Medicine Cabinet w/Wood
- Molded ABS Shower w/Surround
- Shower Head w/Flexible Hose Extension
- Skylight/Roof Vent w/12V Fan
- Vacuum-formed Laminate Counter Tops

### SAFETY/CONVENIENCE

- 10 lb. ABC Fire Extinguisher
- Auto-Gen Start
- Carbon Monoxide, Propane, & Smoke Detectors/Alarms
- Egress Window
- Exterior & Interior Entry Assist Handle
- Multiple Seatbelt Locations

### EXTERIOR THROUGHOUT

- Aluminum Bus-Style Side Swing Luggage Doors
- Gelcoat w/Vinyl Graphics
- Dryseal™ Edge Coating (Water-Wicking Wall Edge Coating)
- Dual 6V Deep Cycle Auxiliary Batteries
- Exterior Entertainment Center
- Flexible Shower Hose & Faucet in Utility Compartment
- High Gloss Smooth Fiberglass Exterior
- Intense Halogen Projector Headlamps w/LED Accents
- Large 1" (Inside Diameter) Water Tank Drain
- Onan® 4.0kW MicroQuiet Generator
- Legless Power Awning w/LED Lighting
- Power Electric Step
- Rear Ladder
- Seamless Beltline Trim
- Pre-wired for Solar Panel Connection
- Stainless Steel Wheel Simulators
- Tapered Slideout Box Tops & Debris Awnings
- Tinted Frameless Flush-Mounted Windows
- Toilet Tank San-T-Flush™ System
- Trailer Hitch w/7 Pin Electrical Hook-Up
- Tuff-Roof™ Low-Maintenance Roof System
- Valve Stem Extenders
- 4-Point Hydraulic Leveling System

- **OPTIONS**
- Onan® 5.5kW MicroQuiet Generator w/2 A/C's & 50A service
- Roof Vent Rain Covers
- Dual Glazed Tinted Frameless Flush-Mounted Windows
- Full Body Paint

### SAFETY/CONVENIENCE

- 30 Amp, 30' Power Cord, Compartment Storage
- AC Duplex GFI Receptacle on Patio Side
- Amber Porch Light w/Interior Switch
- Automotive Safety Glass Windshield
- Entry Door w/Screen Door & Deadbolt Lock
- High Mounted LED Taillights
- Power Electric Step
- Rear Ladder

### STORAGE

- Molded Cross Link Polyethylene Battery Compartment w/Lid
- Slam Latch Luggage Doors & Bus-Class Aluminum Luggage Doors

### BODY STRUCTURE

- Corrosion Resistant Aluminum Tube Hull Framing
- Powerframes™ Precision, Welded Aluminum Interlocking Frames
- Powerlock System™
- Radiused & Cambered Entry Door
- Radius Roof w/Ducted A/C
- Raised Space Frame Foundation
- Solid Bead-Foam Engineered Fit Insulation™
- Vacu-Bond™ Integrated Walls

# WEIGHTS AND MEASUREMENTS

CHASSIS	ADMIRAL XE			ADMIRAL		
	MODEL	30P	31A	31E	30U	31B
Wheelbase (inches)	190"	208"	208"	190"	208"	208"
GVWR (lbs) <sup>1</sup>	18,000	18,000	18,000	18,000	18,000	18,000
Front GAWR (lbs) <sup>2</sup>	7,000	7,000	7,000	7,000	7,000	7,000
Rear GAWR (lbs) <sup>2</sup>	12,000	12,000	12,000	12,000	12,000	12,000
GCWR (lbs) <sup>3</sup>	23,000	23,000	23,000	23,000	23,000	23,000
Hitch Rating Weight (lbs) <sup>1</sup>	5,000	5,000	5,000	5,000	5,000	5,000
Tongue Weight (lbs) <sup>1</sup>	500	500	500	500	500	500
Fuel Capacity (gal)	80	80	80	80	80	80

## FORD® CHASIS

Model: Ford  
Engine: 6.8L Triton V10

Transmission: Ford 6-Speed, Automatic w/Overdrive  
Alternator: 175 Amp

Torque: 460 lb.-ft. @ 3,000 RPM  
Horsepower: 320 HP @ 3,900 RPM

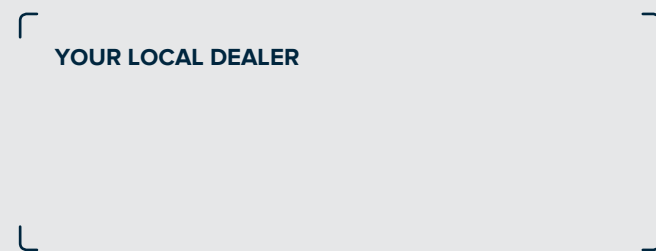
DIMENSIONS & CAPACITIES	ADMIRAL XE			ADMIRAL		
	MODEL	30P	31A	31E	30U	31B
Overall Length (inches) <sup>4</sup>	30' 11"	32' 9"	32' 9"	30' 11"	32' 9"	32' 9"
Overall Height with A/C	12'	12'	12'	12'	12'	12'
Overall Width (maximum) <sup>5,6</sup>	102"	102"	102"	102"	102"	102"
Interior Height (maximum)	82"	82"	82"	82"	82"	82"
Interior Width (maximum)	96"	96"	96"	96"	96"	96"
Patio Awning Width	14'	16'	16'	14'	18'	18'
Interior Storage (cu. ft.)	140	134	108	140	108	134
Exterior Storage (cu. ft.)	104	156	156	104	156	156
Fresh Water Holding Tank (gal)	50	60	60	50	60	60
Grey Water Holding Tank (gal)	35	37	37	35	37	37
Black Water Holding Tank (gal)	35	37	37	35	37	37
Appliance Propane Tank (gal) (WC) <sup>7</sup>	14	14	14	14	14	14
Water Heater Tank (gal)	6	6	6	6	6	6

# This is living.

At Holiday Rambler, your dream journey is our unwavering inspiration. Whether you're planning a rambling weekend getaway or imagining a cross-country holiday adventure, we know that owning a motorhome is a dream lifestyle. We take that dream seriously. **We focus on the idea of home — not the place, but the feeling.** Then we make sure to turn that feeling into one of the most envious getaways. Holiday Rambler. This is living...



HOLIDAY RAMBLER®



**REV GROUP**

Holiday Rambler is part of REV Recreation Group, a division of REV Group, Inc., a family of 29 industry-leading motor vehicle brands. At REV Group, we innovate, design and build products that connect and protect thousands of people every day—our trusted vehicles are engineered with the utmost rigor and precision to deliver the highest levels of performance, reliability, durability and safety.

#### DISCLAIMER

1. GVWR (Gross Vehicle Weight Rating) is the maximum permissible weight of this fully loaded motorhome. The GVWR is equal to or greater than the sum of the (UVW) unloaded vehicle weight plus the (OCCC) occupant cargo-carrying capacity\*.
  2. GAWR (Gross Axle Weight Rating) is the maximum permissible loaded weight a specific axle is designed to carry.
  3. GCWR (Gross Combined Weight Rating) is the value specified by the motorhome manufacturer as the maximum allowable loaded weight of this motorhome with its towed vehicle. Towing and braking capacities may be different. Refer to Holiday Rambler and chassis manufacturer's manuals for complete information.
  4. Length measured from front bumper to rear bumper (excludes accessories).
  5. Excludes safety equipment and awnings.
  6. Motorhomes feature a body width over 96" which will restrict your access to certain roads. Before purchasing, you should research any state and/or province road laws which may affect your usage.
  7. Tank manufacturer's listed water capacity (WC). Actual propane capacity is 80% of water listing as required by the safety code.
- \* The chassis manufacturer recommends the installation of a supplemental brake control system to activate the brakes on the vehicle or trailer you are towing. Hitch receiver ratings expressed are maximum for the hitch receiver installed and may require the purchase of additional equipment that is dependent on the weight of the towed load. Consult with hitch receiver manufacturer for further information.
- \*\* UVW and OCCC are found on the label containing the federal certification tag in each RV.
- \*\*\* The Minimum Towable Load of this vehicle is the available weight capacity, up to GCWR, when the coach is fully loaded to maximum GVWR. However, if the coach is loaded to something less than maximum GVWR, that extra available weight capacity can be added to your Towable Load. For example, if your coach is loaded to 1000lbs less than maximum GVWR, your Towable Load increases accordingly. Do not exceed the hitch rating weight, GVWR or GCWR.
- \*\*\* Seatbelts and locations are shown in the brochure for display purposes only. Actual numbers and locations will vary by model.
- \*\*\* All 2017 REV Recreation Group motorhomes include a limited one-year/15,000-mile coach warranty and three-year/45,000-mile structural warranty, whichever occurs first, and is fully transferable for the first 12 months.

#### CONTACT US

To locate a dealer near you, visit our website at [www.holidayrambler.com](http://www.holidayrambler.com) or call 1-877-252-4666. We can also be contacted at Holiday Rambler Customer Relations, P.O. Box 1007, Decatur, IN 46733.

**IMPORTANT—PLEASE READ:** Product information, photography and illustrations included in this publication were as accurate as possible at the time of printing. For further product information and changes, please visit our website at [www.holidayrambler.com](http://www.holidayrambler.com) or contact your local Holiday Rambler dealer. Prices, materials, design and specifications are subject to change without notice. All weights, fuel, liquid capacities and dimensions are approximate. Holiday Rambler has designed its recreational vehicles to provide a variety of uses for customers. Each vehicle features optimal seating, sleeping, storage and fluid capacities. The user is responsible for selecting the proper combination of loads (i.e., occupants, equipment, fluids, cargo, etc.) to ensure that the vehicle's capacities are not exceeded.

[www.holidayrambler.com](http://www.holidayrambler.com)

©2017 REV Group, Inc. Printed in the USA. Inventory Control Number ADADXE18B1, 07/17. Model Year 2018, First Edition.