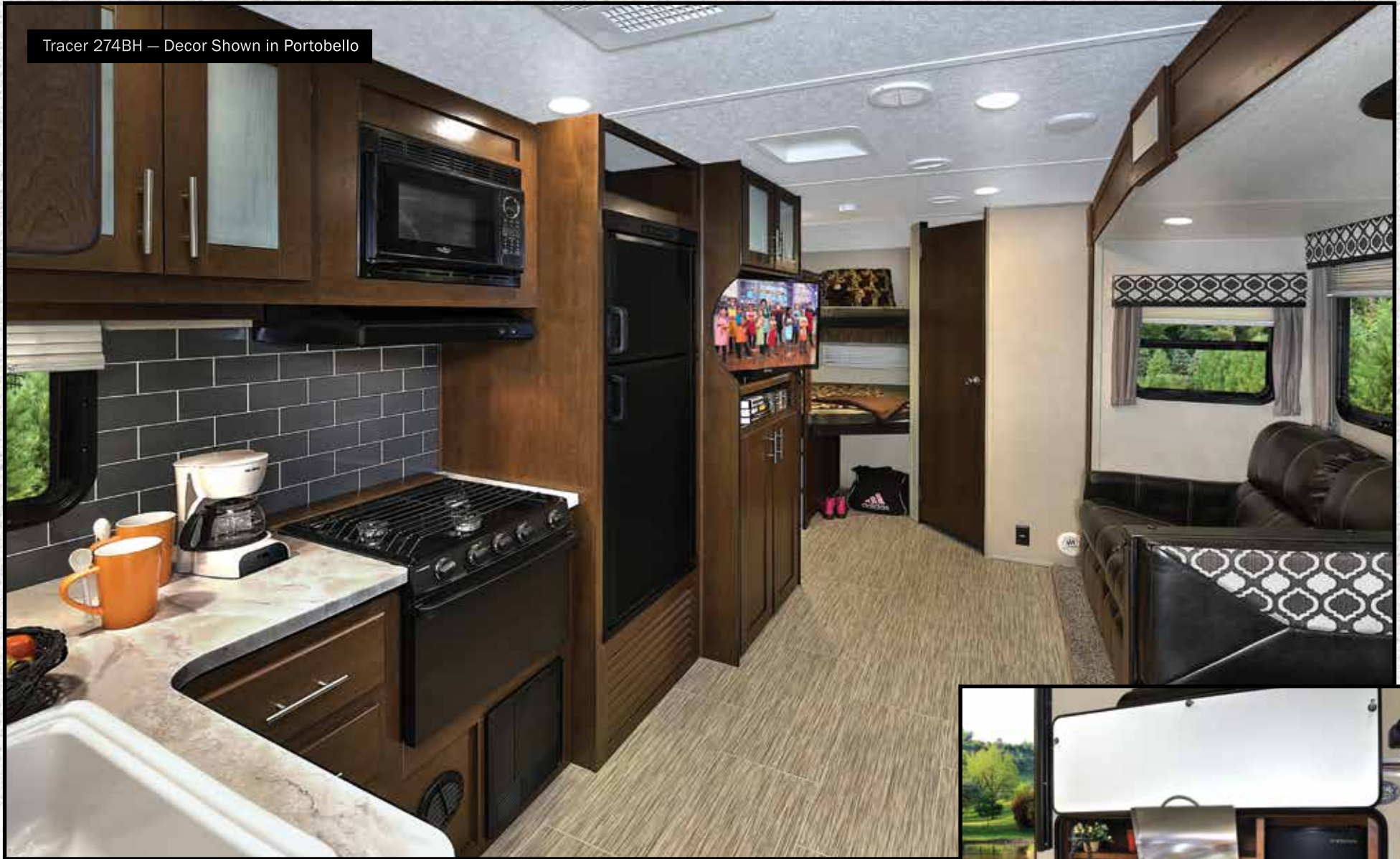


PRIME TIME
Manufacturing



"No Sacrifices" **TRACER**

Tracer 274BH — Decor Shown in Portobello



For the consumer who is looking for ultra-light weights but doesn't want to sacrifice style, amenities, and comfort . . . we've designed the Tracer series travel trailers.

The Tracer offers spacious layouts, plush residential furniture, and other high-end features not typically seen in an ultra-lite trailer that is often thousands of pounds lighter than traditional trailers!



Tracer 274BH

NO SACRIFICES

TRACER
BREEZE



Tracer Breeze 31BHD — Decor Shown in Portobello

For the ultimate easy-to-tow ultra-lite, take a look at the Tracer Breeze! A special breed of travel trailer, the Tracer Breeze was designed to be towed by many of today's cross-over and mid-sized SUV's. Featuring Prime Time Manufacturing's exclusive ETERNABOND® Construction and seamless fiberglass exterior, the Tracer Breeze proves that a camper doesn't have to be light on features to be light in weight! Tracer Breeze will allow you to enjoy your next trip while making "NO SACRIFICES" on comfort and convenience.

TRACER - FLOORPLANS AND SPECIFICATIONS



250RK



255RB



260KS



274BH



291BR



294RK

Tracer represents the pinnacle of ultra-lite innovation, featuring wide-open, spacious layouts that are often hundreds of pounds lighter than traditional floorplans.

Tracer offers premium upgrades like Residentially-Inspired Furniture, Power Tongue Jack, Power Stabilizer Jacks, and Frameless Windows.

Now you can have all the features and the floorplan of your choice in the lightweight, easy-to-tow, Tracer travel trailer!



SPECIFICATIONS	250RK	255RB	260KS	274BH	291BR	294RK
LENGTH	28' 9"	29' 6"	30' 11"	31' 5"	34' 6"	33' 2"
HEIGHT	10' 11"	10' 11"	10' 11"	10' 11"	10' 11"	10' 11"
HITCH WEIGHT	TBD lb.	595 lb.	TBD lb.	590 lb.	740 lb.	640 lb.
UNLOADED VEHICLE WEIGHT (UVW)	TBD lb.	5,629 lb.	TBD lb.	5,920 lb.	6,230 lb.	6,220 lb.
CARGO CARRYING CAPACITY (CCC)	TBD lb.	1,966 lb.	TBD lb.	1,670 lb.	1,510 lb.	1,420 lb.

UVW (Unloaded Vehicle Weight) * is the typical weight of the unit as manufactured at the factory. It includes all weight at the unit's axle(s) and tongue or pin and LP Gas. The UVW does not include cargo, fresh potable water, additional optional equipment or dealer installed accessories. *Estimated Average based on standard build optional equipment.
 CCC (Cargo Carrying Capacity) ** is the amount of weight available for fresh potable water, cargo, additional optional equipment and accessories. CCC is equal to GVWR minus UVW. Available CCC should accommodate fresh potable water (8.3 lbs per gallon). Before filling the fresh water tank, empty the black and gray tanks to provide for more cargo capacity. ** Estimated average based on standard build optional equipment.

TRACER BREEZE - FLOORPLANS AND SPECIFICATIONS



19MRB



20RBS



22MDB



24DBS



25RBS



26DBS



31BHD

SPECIFICATIONS	19MRB	20RBS	22MDB	24DBS	25RBS	26DBS	31BHD
LENGTH	22' 11"	23' 1"	TBD	27' 11"	29' 1"	31' 1"	34' 6"
HEIGHT	10' 7"	10' 7"	TBD	10' 7"	10' 7"	10' 7"	10' 7"
HITCH WEIGHT	TBD lb.	408 lb.	TBD lb.	505 lb.	550 lb.	555 lb.	635 lb.
UNLOADED VEHICLE WEIGHT (UVW)	TBD lb.	4,110 lb.	TBD lb.	4,940 lb.	4,950 lb.	5,530 lb.	6,300 lb.
CARGO CARRYING CAPACITY (CCC)	TBD lb.	3,300 lb.	TBD lb.	2,569 lb.	2,600 lb.	2,025 lb.	1,339 lb.

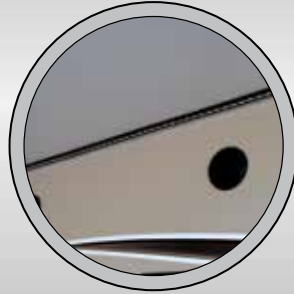
HIGH-IMPACT FEATURES



**ETERNABOND
CONSTRUCTION**



FRAMELESS WINDOWS



LED LIGHTED AWNING



**18 GPH DSI WATER
HEATER**



**AERODYNAMIC PROFILES
WITH ROCK GUARD**



**DEXTER AXLES WITH
5-YEAR WARRANTY**



SOLAR PREP



BACK UP CAMERA PREP



FULLY WALKABLE ROOF



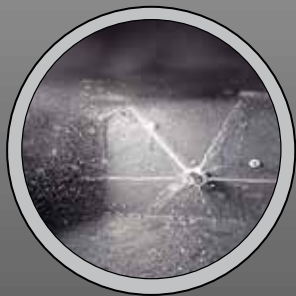
**SEAMLESS
COUNTERTOPS**



**FRICTION HINGE ENTRY
DOOR**



**HIGH-RISE METAL
FAUCET**



BLACK TANK FLUSH



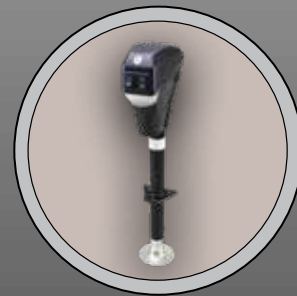
LED INTERIOR LIGHTING



**ELECTRIC STABILIZER
JACKS
(N/A BREEZE)**



**HIGH GLOSS GEL COAT
(N/A BREEZE)**



**ELECTRIC TONGUE JACK
(N/A BREEZE)**



**UNIVERSAL DOCKING
CENTER
(N/A BREEZE)**

STANDARDS & OPTIONS

ETERNABOND CONSTRUCTION Featuring

- Laminated Aluminum Framed Side Walls R-11 - *†
- Laminated Aluminum Framed Rear Walls R-11 - *†
- Laminated Aluminum Framed Main Floor R14 - *†
- Laminated Aluminum Framed Slideout Walls & Roof R-11 - *†

Thermal Package

- Roof (R-14) Double Layer Fiberglass - *†
- Floor (R-14) Extra Thick Bead Foam - *†
- Front Cap (R-14) Double Layer Fiberglass Insulation - *†
- Enclosed And Heated Underbelly - *†
- Enclosed And Heated Holding Tanks - *†

CONSTRUCTION

- High Gloss Gel Coated Fiberglass Exterior - *
- 30 AMP Detachable Power Cord -- *†
- 50 AMP Detachable Power Cord (Select Models)
- 3/8" Walk On Roof Decking - *†
- Snow Load Approved 5" Truss Rafters -- *†
- One Piece TPO Roof with 12-Year Warranty- *†

EXTERIOR FEATURES & EQUIPMENT

- A&E LED Lit Electric Awning - *†
- Electric Stabilizer Jacks - *
- Power Tongue Jack - *
- Champagne High-Gloss Exterior - *
- Huge Pass Thru Storage With Oversized Doors - *†
- Universal Docking Center - *
- Battery Disconnect Switch - *
- Black Tank Flush - *†
- Outside Shower With Recoil Hose - *†
- Solar Prep - *†
- Back-Up Camera Prep - *†
- Cable and Satellite Ready - *†
- Large Fold-Away Grab Handle - *
- Spare Tire With Carrier - *†
- Automotive Style Frameless Windows - *†
- Roof Mounted Antenna - *†
- Exterior GFI Outlet - *†
- LP Quick Connect - *†
- Outside Speakers - *†
- Aerodynamic Fiberglass Front Cap - *
- Front Diamond Plate Rock Guard - *†
- "E-Z Lube" Greasable Axle Hubs - *†
- EZ Tow Wide Track Suspension - *
- Dexter Axles With 5-Year Warranty - *†
- "D" Rated Radial Tires - *†
- Extended Drip Spouts - *†
- Hitch Light - *†
- Outside Kitchen Cook Center (Select Floorplans) - *†

INTERIOR FEATURES & EQUIPMENT

- Large LED TV's In All Floorplans - *†
- AM/FM/CD/DVD/Bluetooth Stereo System With USB Port- *†
- Shaker Style Kitchen Overhead Cabinet Doors - *†
- Pre-drilled And Screwed Cabinetry - *†
- Solid Wood Core Cabinetry - *†
- Brushed Nickel "J" Spout Kitchen Faucet - *†
- Large Single Basin Sink - *†
- Seamless Residential Countertops - *†
- Residential Pleated Shades - *†
- Residential Hide-A-Bed Sofa (Most Models) - *†
- Extended Height Toilet With Foot Flush - *†
- Large Medicine Cabinet - *†
- Tub/Shower Surround - *†
- Skylight Above Shower (Most Models) - *†
- 12V Exhaust Fan in Bath - *†
- "Evergreen" Select Foam Queen Size Mattress - *†
- Quilted Bunk Mats (Where Applicable) - *†
- Quilted Residential Bedspread - *†

APPLIANCES

- Large 2-Door Refrigerator - *†
- 13,500 BTU Residential Ducted Air Conditioner - *†
- Optional 15,000 BTU A/C - *†
- 6 Gallon Gas/Electric Water Heater - *†
- 18 Gallons /Hour Quick Recovery Mode for Water Heater*†
- High Capacity Gas Furnace - *†
- Large Oven - *†
- Range Hood With Light - *†
- Water Heater Bypass - *†
- Hi Capacity Water Pump - *†
- Microwave - *†

SAFETY

- CO Detector - *†
- LP Detector - *†
- Fire Extinguisher - *†
- Dual Hitch Safety Chains - *†
- Smoke Alarm - *†

TANK CAPACITY

- FRESH WATER: 48 Gallons
- GREY WATER: 30 Gallons**
- BLACK WATER: 30 Gallons**

TRACER ADVANTAGE PACKAGE*

- ETERNABOND CONSTRUCTION
- Aerodynamic Front Cap
- High Gloss Gel Coat Fiberglass
- 18 Gallons /Hour Quick Recovery Mode for Water Heater
- Spare Tire with Carrier
- Exterior Shower
- Outside Speakers
- LED Lit Power Awning
- Solar Prep
- Back Up Camera Prep
- Fully Enclosed Underbelly
- Universal Docking Center
- Frameless Windows
- Electric Stabilizer Jacks
- Electric Tongue Jack
- E-Z Tow Wide Track Suspension
- Residential Seamless Countertops
- Residential Subway Tile Backsplash
- Brushed Nickel "J" Spout Kitchen Faucet

TRACER BREEZE ADVANTAGE PACKAGE †

- ETERNABOND CONSTRUCTION
- 18 Gallons /Hour Quick Recovery Mode for Water Heater
- Spare Tire with Carrier
- Exterior Shower
- Outside Speakers
- LED Lit Power Awning
- Solar Prep
- Back Up Camera Prep
- Fully Enclosed Underbelly
- Black Tank Flush
- Frameless Windows
- LED Interior Lighting
- Large Double Door Refrigerator
- Residential Seamless Countertops

* = TRACER

† = TRACER BREEZE

**Some models vary. See website for additional details.

DSI QUALITY CIRCLE AWARD

Prime Time Manufacturing is proud to be recognized as an industry leader in value, reliability, and overall quality by the Recreational Vehicle Dealers Association. We are committed to "A Higher Standard" in design, construction, testing, and customer service. Check us out — we know you'll be impressed!



Seek-A-Leak Pressure Test



65 Point Secondary PDI



Seal Tech Air Pressure Test



Web Based Customer Service



Advanced Engineering



Executive Quality Audits



ETERNABOND® Construction



Rain Bay

Download the Prime Time Manufacturing mobile app or visit our dynamic online manual to enhance your ownership experience. These interactive options provide incredible ease and insight into use, maintenance and enjoyment of your Prime Time Manufacturing product. From "How-To" videos, pictures and illustrations of various components, systems and features, to fully searchable content and downloadable PDFs for individual component owner's manuals, answers are always just a click away.



View the online manual at <http://www.primetimerv.com/OnlineManual.aspx> or download our FREE app from the App Store or Google Play!

All information contained in this brochure is believed to be accurate at the time of publication. However, during the model year, it may be necessary to make revisions and Forest River, Inc., reserves the right to make all such changes without notice, including prices, colors, materials, equipment and specifications as well as the addition of new models and the discontinuance of models shown in this brochure. Therefore, please consult with your Forest River, Inc., dealer and confirm the existence of any materials, design or specifications that are material to your purchase decision.

©2017 Prime Time Manufacturing, a Division Of Forest River, Inc., a Berkshire Hathaway Company. All Rights Reserved.



FROG™ the Forest River Owners' Group!

CUSTOMER SATISFACTION



www.ForestRiverBuyLocal.com

ADDITIONAL SPECIFICATIONS:

GVWR (Gross Vehicle Weight Rating) - is the maximum permissible weight of the unit when fully loaded. It includes all weights, inclusive of all fluids, cargo, optional equipment and accessories. For safety and product performance do NOT exceed the GVWR.

GAWR (Gross Axle Weight Rating) is the maximum permissible weight, including cargo, fluids, optional equipment and accessories that can be safely supported by a combination of all axles.

Each Forest River RV is weighed at the manufacturing facility prior to shipping. A label identifying the unloaded vehicle weight of the actual unit and the cargo carrying capacity is applied to every Forest River RV prior to leaving our facilities. The load capacity of your unit is designated by weight, not by volume, so you cannot necessarily use all available space when loading your unit.

www.primetimerv.com
PO Box 330 • 55470 CR 1 • Elkhart, IN 46515



FREE MEMBERSHIP to Forest River Owners' Group

www.forestriverfrog.com



24/7 EMERGENCY ROADSIDE ASSISTANCE

For a worry-free ownership experience Forest River includes one year of Coach-Net RV Technical & Roadside Assistance with each RV purchase. Whether new to the RV lifestyle or an experienced RV enthusiast, Forest River owners have 24/7 access to technical, operational and emergency road service coverage throughout the US & Canada. Coach-Net's fast, dependable service is just a phone call away.



PRE-DELIVERY INSPECTION FACILITY

20,000 square feet of quality assurance. The bare essentials for a premium product. This state-of-the-art facility gives immediate daily feedback to production for quality assurance in every unit built.



Learn More
Scan this barcode using a QR Reader on your smart phone to learn more about Forest River.



A Berkshire Hathaway company.

DEALER