



2024 MIDWEST WILDWOOD FSX
2023 NORTHWEST WILDWOOD FSX

The logo is a stylized, wing-like emblem with a black and white border. Inside, the text "FOREST RIVER" is at the top in a small, white, serif font. Below it, "WILDWOOD" is written in a large, bold, white, serif font with a black outline. At the bottom, "FSX" is written in a large, bold, white, stylized font with a black outline.

FOREST RIVER
WILDWOOD
FSX



2024

LE TRAVEL TRAILERS

164RBLE
LENGTH: 20' 1"
UVW: 2,819 LBS



174BHLE
LENGTH: 20' 1"
UVW: 2,899 LBS

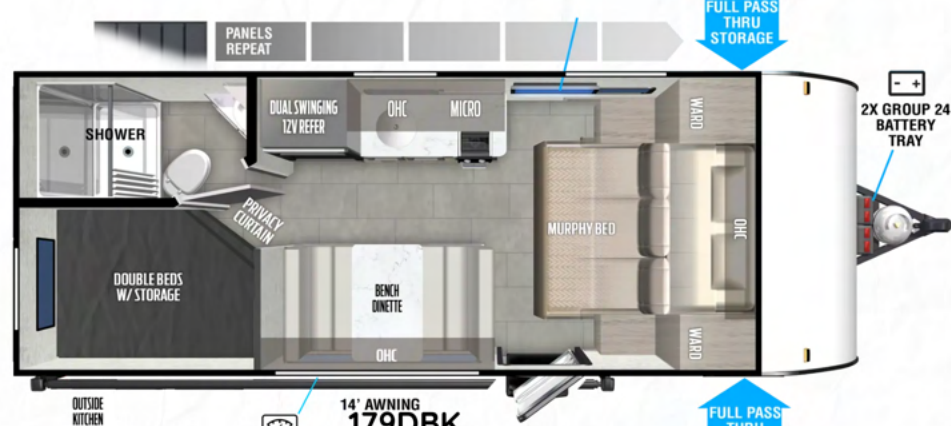


OVERSIZED DOOR FOR STORAGE ACCESS



177BH 12' AWNING
LENGTH: 22' 0"
UVW: 3,319 LBS

FULL PASS THRU STORAGE



14' AWNING
179DBK
LENGTH: 22' 6"
UVW: 3,829 LBS

FULL PASS THRU STORAGE

TRAVEL TRAILERS

REMOVABLE UNDERBELLY PANELS



14' AWNING
178BHSK
LENGTH: 22' 11"
UVW: 4,119 LBS

FULL PASS THRU STORAGE

OVERSIZED DOOR FOR STORAGE ACCESS



12' AWNING
167RBK
LENGTH: 21' 2"
UVW: 3,651 LBS

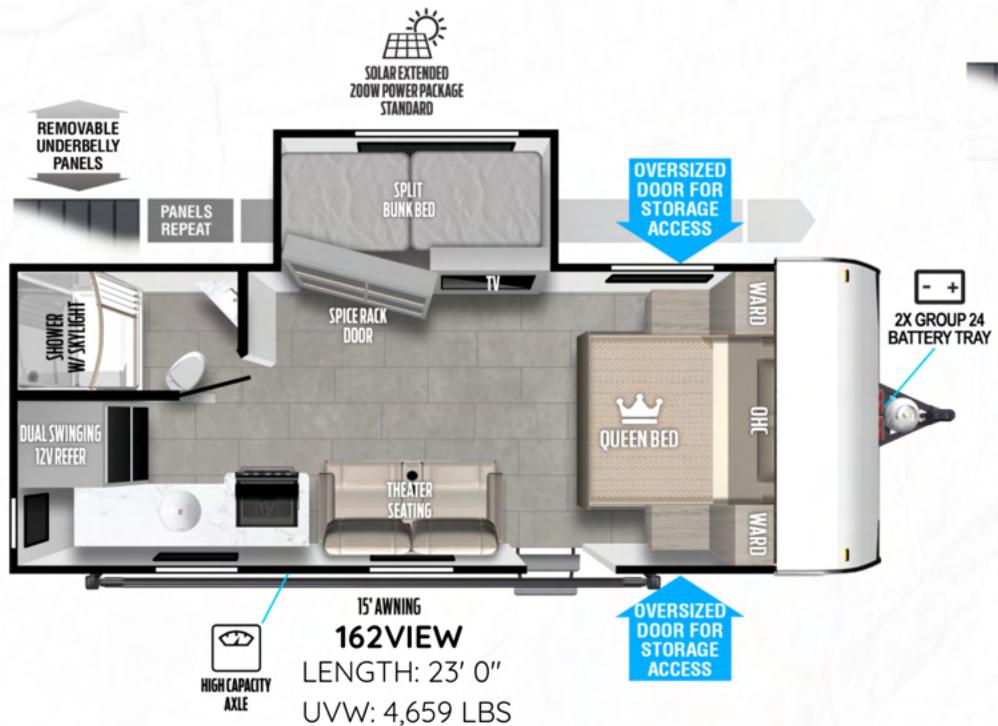
OVERSIZED DOOR FOR STORAGE ACCESS

HIGH CAPACITY AXLE

HIGH CAPACITY

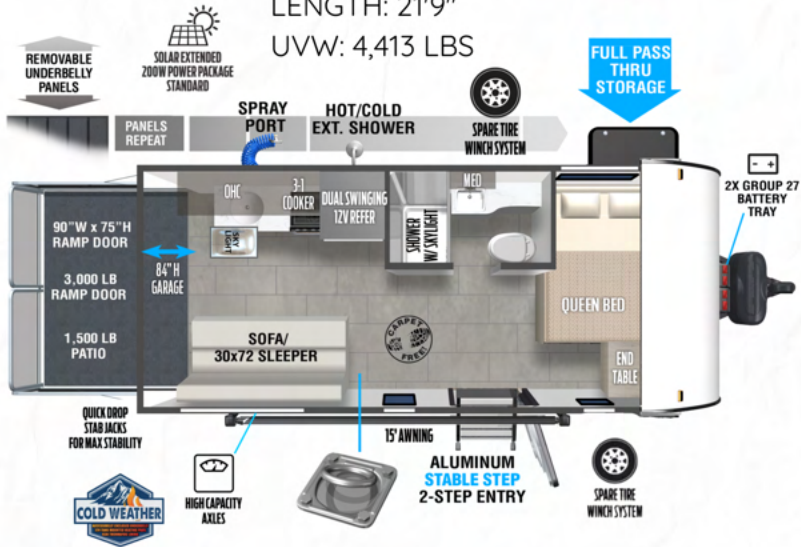


TRAVEL TRAILERS

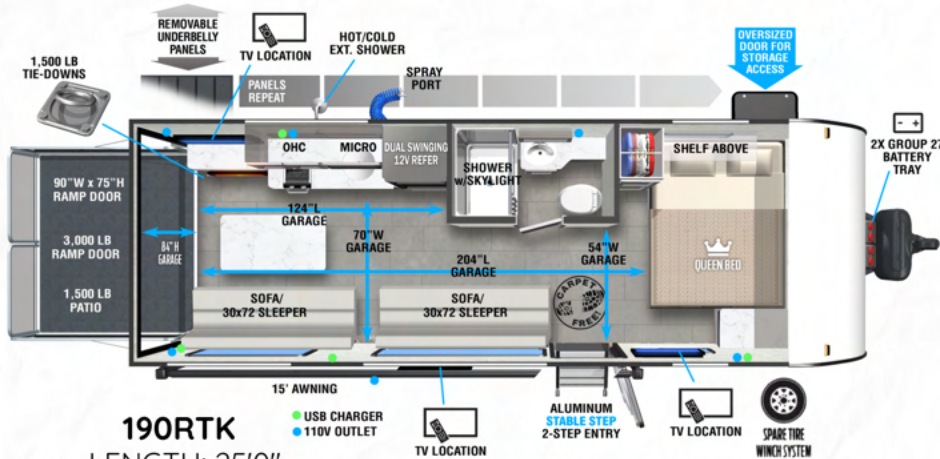
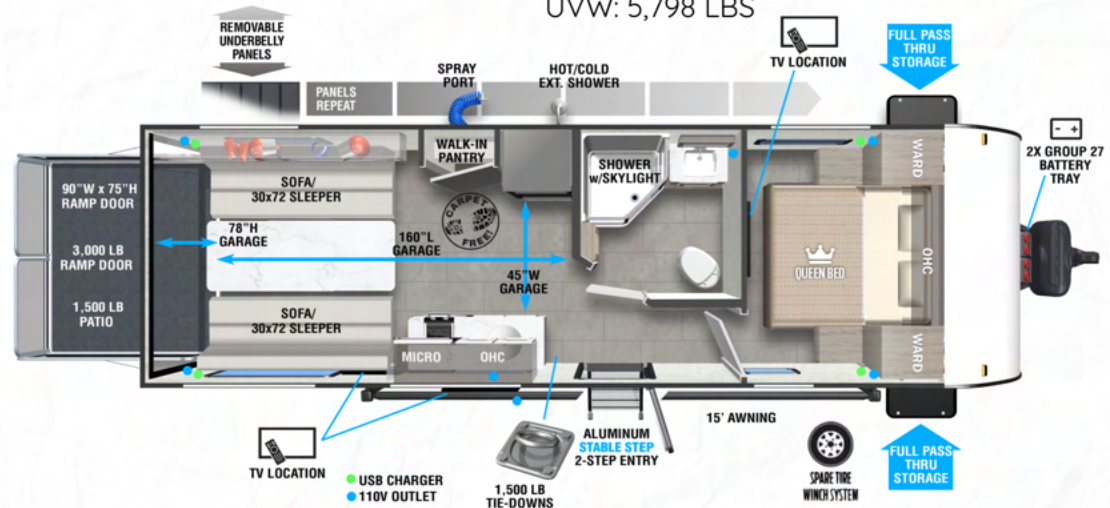


TOY HAULERS + VERSATILE CARGO

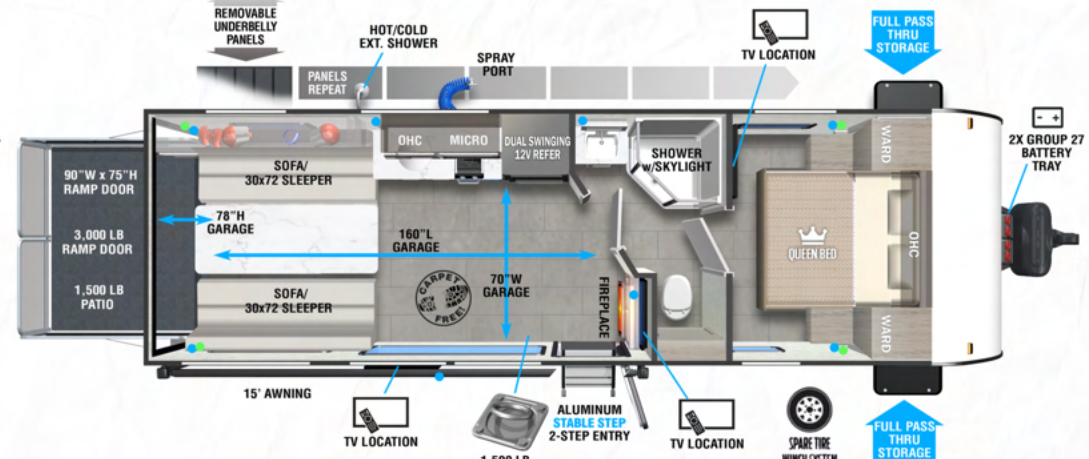
175RTK
LENGTH: 21'9"
UVW: 4,413 LBS



210RTK
LENGTH: 28'8"
UVW: 5,798 LBS



190RTK
LENGTH: 25'0"
UVW: 4,988 LBS



260RTK
LENGTH: 28'8"
UVW: 5,805 LBS



AVAILABLE ON MOST MODELS

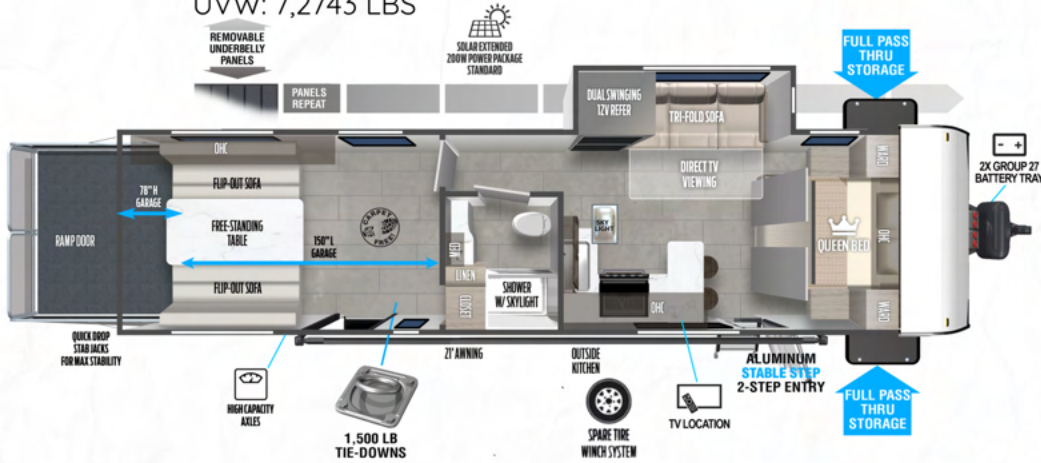


270RTK
LENGTH: 32'3"
UVW: 6,318 LBS

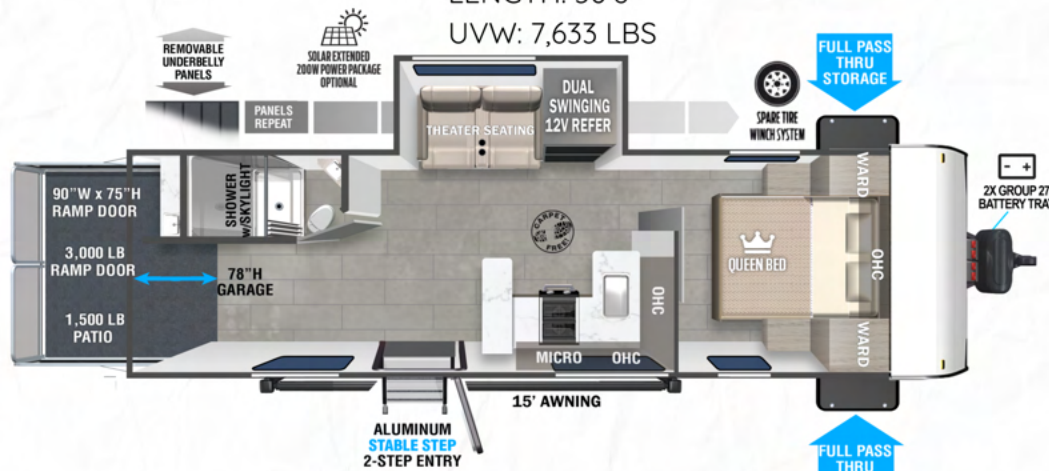


TOY HAULERS + VERSATILE CARGO

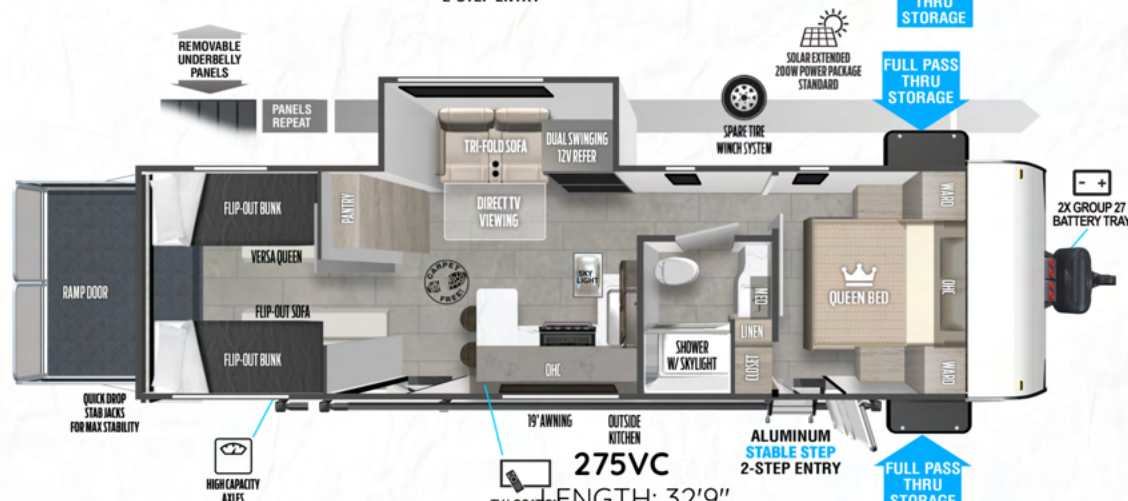
290RTK
 LENGTH: 36'6"
 UVW: 7,2743 LBS



262VC
 LENGTH: 30'6"
 UVW: 7,633 LBS



245VC
 LENGTH: 27'5"
 UVW: 6,208 LBS



275VC
 LENGTH: 32'9"
 UVW: 7,008 LBS



30VCVIEW
 LENGTH: 36'6"
 UVW: 8,585 LBS





For the most recent specs, pictures,
and 360 tours visit
forestriverinc.com/wildwood-fsx
or
Scan QR Code below



Your Wildwood Dealer



@wildwoodrvs



@WildwoodRV

24/7 EMERGENCY
ROADSIDE ASSISTANCE
WITH VEHICLE PURCHASE

TOWING
JUMP STARTS
TIRE CHANGES
FLUID DELIVERY
LOCKOUT
SERVICE

WINCH-OUT
MOBILE MECHANIC
TECHNICAL
SUPPORT
DEALER LOCATOR
SERVICES

**SPECIALIZED
DISPATCH SERVICES**

*VALID FOR 1 YEAR FROM DATE OF PURCHASE

CUSTOMER SATISFACTION

FOREST RIVER
RECOMMENDS YOU TO

BUY LOCAL

PREFERENTIAL SERVICE

PRODUCT INFORMATION

www.ForestRiverBuyLocal.com

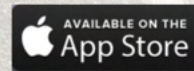
FREE MEMBERSHIP
to Forest River Owners' Group

www.forestriverfrog.com

FOREST RIVER

A Berkshire Hathaway company.

Learn More
Scan this barcode using
a QR Reader on your
smart phone to learn
more about Forest River.



Download the Forest River mobile app or visit our dynamic online manual to enhance your ownership experience. These interactive options provide incredible ease and insight into use, maintenance and enjoyment of your Forest River product. From "How-To" videos, pictures and illustrations of various components, systems and features, to fully searchable content and downloadable PDFs for individual component owner's manuals, answers are always just a click away

PRE-DELIVERY INSPECTION FACILITY

75,000 square feet of quality assurance. The bare essential for a premium product. This state-of-the-art facility gives immediate daily feedback to production for quality assurance in every unit built.

UVW (Unloaded Vehicle Weight)* is the typical weight of the unit as manufactured at the factory. It includes all weight at the unit's axle(s) and tongue or pin and LP Gas. The UVW does not include cargo, fresh potable water, additional optional equipment or dealer installed accessories. *Estimated Average based on standard build optional equipment. CCC (Cargo Carrying Capacity) is the amount of weight available for fresh potable water, cargo, additional optional equipment and accessories. CCC is equal to GVWR minus UVW. Available CCC should accommodate fresh potable water (8.3 lbs per gallon). Before filling the fresh water tank, empty the black and gray tanks to provide for more cargo capacity. Estimated average based on standard build optional equipment. See back page for additional specification definitions. GVWR (Gross Vehicle Weight Rating) - is the maximum permissible weight of the unit when fully loaded. It includes all weights, inclusive of all fluids, cargo, optional equipment and accessories. For safety and product performance do NOT exceed the GVWR. GAWR (Gross Axle Weight Rating) is the maximum permissible weight, including cargo, fluids, optional equipment and accessories that can be safely supported by a combination of all axles. Each Forest River RV is weighed at the manufacturing facility prior to shipping. A label identifying the unloaded vehicle weight of the actual uAll information contained in this brochure is believed to be accurate at the time of publication. However, during the model year, it may be necessary to make revisions and Forest River, Inc., reserves the right to make all such changes without notice, including prices, colors, materials, equipment and specifications as well as the addition of new models and the discontinuance of models shown in this brochure. Therefore, please consult with your Forest River dealer and confirm the existence of any materials, design or specifications that are material to your purchase decision. © 2023 Ozark, a Division of Forest River, Inc., a Berkshire Hathaway company. All Rights Reserved

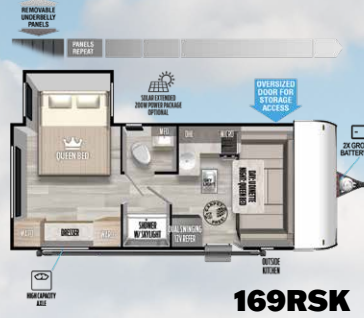
FOREST RIVER
WILDWOOD



FOREST RIVER WILDWOOD FSX



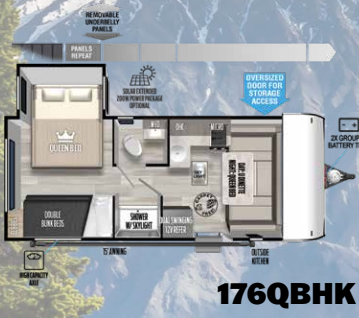
161QK



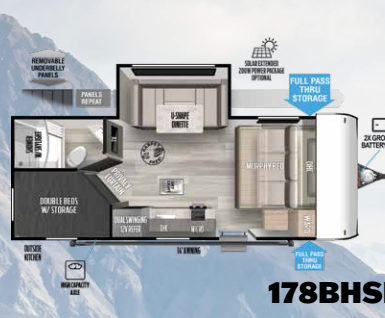
169RSK



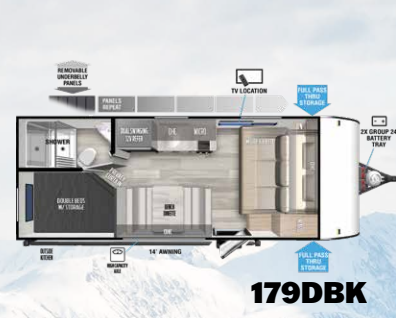
170SS



176QBHK



178BHSK



179DBK



181RT



169RSK



176QBHK



181RT

	161QK	169RSK	170SS	176QBHK	178BHSK	179DBK	181RT
LENGTH	23' 6"	22' 11"	22' 9"	21' 8"	22' 11"	22' 6"	21' 8"
HEIGHT	TBD	10' 4"	10' 4"	10' 4"	10' 4"	10' 2"	10' 2"
HITCH WEIGHT	508 lb.	555 lb.	445 lb.	520 lb.	430 lb.	465 lb.	440 lb.
UVW	3,691	4,024 lb.	3,819 lb.	3,944 lb.	3,749 lb.	3,219 lb.	3,204 lb.
CCC	1,217	931 lb.	1,026 lb.	976 lb.	1,081 lb.	1,646 lb.	1,636 lb.
FRESH WATER	39 gal.	43 gal.	43 gal.	43 gal.	43 gal.	43 gal.	43 gal.
GRAY WATER	40 gal.	30 gal.	30 gal.	30 gal.	30 gal.	30 gal.	30 gal.
BLACK WATER	40 gal.	30 gal.	30 gal.	30 gal.	30 gal.	30 gal.	30 gal.
AWNING	15'	15'	12'	15'	12'	13'	12'

WILDWOOD X-LITE FOREST RIVER



210RBXL



211SSXL



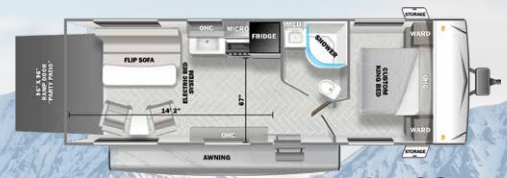
220BHXL



240BHXL



243BHXL



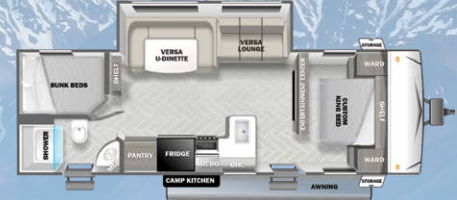
251SSXL



253RKXL



260RTK



263BHXL



273QBXL



28VBXL



260RTK

Let's Get Social!
Find us on Facebook, Instagram, and YouTube



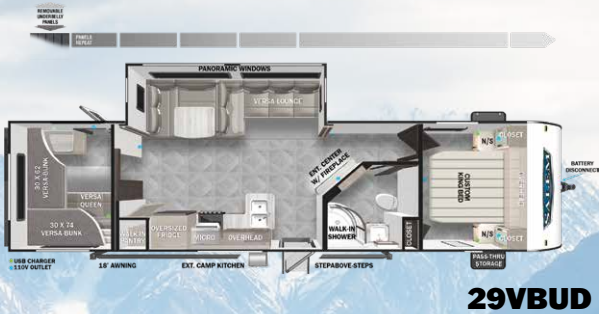
	210RBXL	211SSXL	220BHXL	240BHXL	243BHXL	251SSXL	253RKXL	260RTK	263BHXL	273QBXL	28VBXL
LENGTH	25' 2"	27' 5"	27' 8"	28' 10"	28' 2"	29' 5"	29' 1"	28' 8"	31' 11"	33' 8"	33' 4"
HEIGHT	10' 3"	11' 8"	10' 3"	10' 4"	10' 1"	11' 8"	11' 3"	10' 6"	10' 3"	10' 3"	10' 4"
HITCH WEIGHT	500 lb.	740 lb.	602 lb.	570 lb.	566 lb.	746 lb.	578 lb.	650 lb.	736 lb.	752 lb.	828 lb.
UVW	4,830 lb.	5,262 lb.	4,800 lb.	5,343 lb.	5,492 lb.	5,664 lb.	5,794 lb.	5,276 lb.	6,406 lb.	6,550 lb.	6,486 lb.
CCC	2,670 lb.	3,278 lb.	2,802 lb.	2,227 lb.	2,074 lb.	2,882 lb.	1,784	3,174 lb.	1,330 lb.	2,002 lb.	2,142 lb.
FRESH WATER	61 gal.	61 gal.	42 gal.	40 gal.	61 gal.	61 gal.	61 gal.	42 gal.	61 gal.	61 gal.	61 gal.
GRAY WATER	42 gal.	28 gal.	60 gal.	30 gal.	60 gal.	26 gal.	66 gal.	28 gal.	74 gal.	32 gal.	32 gal.
BLACK WATER	32 gal.	32 gal.	32 gal.	30 gal.	32 gal.	32 gal.	42 gal.	32 gal.	32 gal.	42 gal.	42 gal.
AWNING	14'	18'	12'	18'	12'	18'	16'	15'	16'	16'	16'



22RBS



26DBUD



29VBUD

FOREST RIVER WILDWOOD

	22RBS	26DBUD	29VBUD
LENGTH	27' 0"	33' 9"	36' 0"
HEIGHT	11' 2"	11' 2"	11' 2"
HITCH WEIGHT	771 lb.	824 lb.	805 lb.
UVW	5,647 lb.	6,988 lb.	7,397 lb.
CCC	2,124 lb.	2,636 lb.	2,208 lb.
FRESH WATER	61 gal.	61 gal.	61 gal.
GRAY WATER	64 gal.	75 gal.	75 gal.
BLACK WATER	32 gal.	32 gal.	32 gal.
AWNING	16'	18'	18'



PRE-DELIVERY INSPECTION FACILITY

20,000 square feet of quality assurance. The bare essentials for a premium product. This state-of-the-art facility gives immediate daily feedback to production for quality assurance in every unit built.

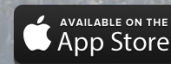
CUSTOMER SATISFACTION



www.ForestRiverBuyLocal.com

Download our Forest River mobile app or visit our dynamic online manual to enhance your ownership experience. These interactive options provide incredible ease and insight into use, maintenance and enjoyment of your Forest River product.

Ranging from "How-To" videos, pictures and illustrations of various components, systems and features, to fully searchable content and downloadable PDFs for individual component owner's manuals, answers are always just a click away. View the online manual at www.forestriverinc.com/OnlineManual or download our FREE app from the App Store or Google Play!



FREE MEMBERSHIP
to Forest River Owners' Group

www.forestriverfrog.com



GVWR (Gross Vehicle Weight Rating) - is the maximum permissible weight of the unit when fully loaded. It includes all weights, inclusive of all fluids, cargo, optional equipment and accessories. For safety and product performance do NOT exceed the GVWR.

GAWR (Gross Axle Weight Rating) - is the maximum permissible weight, including cargo, fluids, optional equipment and accessories that can be safely supported by a combination of all axles.

UVW (Unloaded Vehicle Weight)** - is the typical weight of the unit as manufactured at the factory. It includes all weight at the unit's axle(s) and tongue or pin and LP Gas. The UVW does not include cargo, fresh potable water, additional optional equipment or dealer installed accessories.

CCC (Cargo Carrying Capacity)** - is the amount of weight available for fresh potable water, cargo, additional optional equipment and accessories. CCC is equal to GVWR minus UVW. Available CCC should accommodate fresh potable water (8.3 lbs per gallon). Before filling the fresh water tank, empty black and gray tanks for more cargo capacity.

*Estimated Average based on standard build optional equipment. ** Estimated average based on standard build optional equipment. Values estimated at time of printing.

Each Forest River RV is weighed at the manufacturing facility prior to shipping. A label identifying the unloaded vehicle weight of the actual unit and the cargo carrying capacity is applied to every Forest River RV prior to leaving our facilities. The load capacity of your unit is designated by weight, not by volume, so you cannot necessarily use all available space when loading your unit.

All information contained in this brochure is believed to be accurate at the time of publication. However, during the model year, it may be necessary to make revisions and Forest River, Inc., reserves the right to make all such changes without notice, including prices, colors, materials, equipment and specifications as well as the addition of new models and the discontinuance of models shown in this brochure. Therefore, please consult with your Forest River, Inc., dealer and confirm the existence of any materials, design or specifications that are material to your purchase decision.

©2023 Wildwood, a division of Forest River, Inc., a Berkshire Hathaway company.



Learn More
Scan this barcode using a QR Reader on your smart phone to learn more about Forest River.



A Berkshire Hathaway company.

**24/7 EMERGENCY
ROADSIDE ASSISTANCE
WITH VEHICLE PURCHASE***

TOWING
JUMP-STARTS
TIRE CHANGES
FLUID DELIVERY
LOCKOUT
SERVICE

WINCH-OUT
MOBILE MECHANIC
TECHNICAL
SUPPORT
DEALER LOCATOR
SERVICES



*VALID FOR 1 YEAR FROM DATE OF PURCHASE