

RAPTOR

FIFTH WHEEL TOY HAULERS



KEYSTONE
RV COMPANY

LIVE IT OUT.

RAPTOR

FIFTH WHEEL TOY HAULERS



LIVE IT OUT.

RAPTOR



RAPTOR | TOY HAULERS

Adventure That Knows No Limits.

In 2003, Keystone RV set the standard for durable and innovative toy haulers with the birth of the iconic Raptor brand. Still a favorite among thrill-seekers, Raptor is rapidly developing a new fan base. Growing families, hobbyists, and outdoor enthusiasts of all types appreciate Raptor's flexible floorplans, multi-zone living, and modern, sophisticated design. Raptor toy haulers strike the perfect balance of residential comfort and flexibility to deliver no-limits adventure that evolves as you do.

For more information, please visit keystonerv.com/Raptor

RAPTOR



— RAPTOR | TOY HAULERS —

Adventure That Knows No Limits.

In 2003, Keystone RV set the standard for durable and innovative toy haulers with the birth of the iconic Raptor brand. Still a favorite among thrill-seekers, Raptor is rapidly developing a new fan base. Growing families, hobbyists, and outdoor enthusiasts of all types appreciate Raptor's flexible floorplans, multi-zone living, and modern, sophisticated design. Raptor toy haulers strike the perfect balance of residential comfort and flexibility to deliver no-limits adventure that evolves as you do.

For more information, please visit kestonerv.com/Raptor

KEYSTONE EXCLUSIVE INNOVATIONS

Designed to deliver superior performance, quality, and a best-in-class camping experience, every Raptor model includes engineering innovations available EXCLUSIVELY to Keystone owners. For more information about these features and the Keystone Innovation Lab, visit us online at www.keystonerv.com/innovations.



Blade™ High-Performance Air Flow System & Tuf-Lok™ A/C Duct Joiners

Blade™ & Tuf-Lok™ are designed to accelerate air flow, eliminate leakage and failure points, and deliver 360° circulation.



KeyTV™

No more connection guesswork or poor reception. KeyTV offers a game-changing, single point of control of over-the-air, cable, and satellite feeds.



Hitch Vision™

Simplifies hitch hook-up with "no looking back" convenience.



Color-Coded Unified Wiring Standard

Easy-to-trace circuits simplify electrical and entertainment system troubleshooting.



In-floor Heating Ducts

Distributes heat evenly through your coach for superior comfort.



Tru-fit™ Slide Construction

A more durable slide room design that minimizes functional motor and structural stress and resists leaking.



3-YEAR LIMITED STRUCTURAL WARRANTY, 1-YEAR LIMITED BASE WARRANTY

Every new Keystone RV comes with the industry's best three-year limited structural warranty AND a one-year limited base warranty. Ask your dealer, visit keystonerv.com, or call Keystone Owner Relations for details.

KEYSTONE EXCLUSIVE INNOVATIONS

Designed to deliver superior performance, quality, and a best-in-class camping experience, every Raptor model includes engineering innovations available EXCLUSIVELY to Keystone owners. For more information about these features and the Keystone Innovation Lab, visit us online at www.keystonerv.com/innovations.



Blade™ High-Performance Air Flow System & Tuf-Lok™ A/C Duct Joiners

Blade™ & Tuf-Lok™ are designed to accelerate air flow, eliminate leakage and failure points, and deliver 360° circulation.



KeyTV™

No more connection guesswork or poor reception. KeyTV offers a game-changing, single point of control of over-the-air, cable, and satellite feeds.



Hitch Vision™

Simplifies hitch hook-up with "no looking back" convenience.



Color-Coded Unified Wiring Standard

Easy-to-trace circuits simplify electrical and entertainment system troubleshooting.



In-floor Heating Ducts

Distributes heat evenly through your coach for superior comfort.



Tru-fit™ Slide Construction

A more durable slide room design that minimizes functional motor and structural stress and resists leaking.



3-YEAR LIMITED STRUCTURAL WARRANTY, 1-YEAR LIMITED BASE WARRANTY

Every new Keystone RV comes with the industry's best three-year limited structural warranty AND a one-year limited base warranty. Ask your dealer, visit keystonerv.com, or call Keystone Owner Relations for details.



more product detail at
www.keystonerv.com/Raptor



EVERYTHING YOU'D EXPECT IN A TOY HAULER AND OH, SO MUCH MORE.

Raptor's interior reflects the desire for light, designer-inspired decor that is airy and inviting. Stunning washed gray cabinets and glass-paneled doors are featured in the kitchen with a herringbone, slate-gray backsplash wall. Raptor's decor takes cues from modern home designs, with the look of reclaimed barn wood and farmhouse-style accents. Lighter carpet is used in the master bedroom to pair with a chic shiplap-look headboard, bringing a modern elegance to the toy hauler category.





more product detail at
www.keystonerv.com/Raptor



EVERYTHING YOU'D EXPECT IN A TOY HAULER AND OH, SO MUCH MORE.

Raptor's interior reflects the desire for light, designer-inspired decor that is airy and inviting. Stunning washed gray cabinets and glass-paneled doors are featured in the kitchen with a herringbone, slate-gray backsplash wall. Raptor's decor takes cues from modern home designs, with the look of reclaimed barn wood and farmhouse-style accents. Lighter carpet is used in the master bedroom to pair with a chic shiplap-look headboard, bringing a modern elegance to the toy hauler category.





DÉCOR OPTIONS

Quantum (shown left) offers dappled gray seating with light linen-look valances. Gravity (right) features espresso seating and warm toned window treatments.



A ROOM WITH A VIEW

Oversized windows let in an abundance of natural light and stunning views.





DÉCOR OPTIONS

Quantum (shown left) offers dappled gray seating with light linen-look valances. Gravity (right) features espresso seating and warm toned window treatments.



A ROOM WITH A VIEW

Oversized windows let in an abundance of natural light and stunning views.



blade

HIGH-PERFORMANCE AIR FLOW SYSTEM



BLADE™ HIGH PERFORMANCE AIR HANDLING SYSTEMS

Engineered to maximize the output from today's high-performance RV air conditioners, Keystone's NEW patented air handling system delivers an average of 20% more cooling power and is built to withstand the rigors of the road. The Blade™ system is designed to accelerate air flow, eliminate leakage and failure points, deliver 360° circulation in the cabin, and withstand environmental and road stressors that lead to reduced performance.

NEW EXTERIOR PAINT DESIGN

The new paint scheme is Raptor's hottest upgrade right now. Design will be offered in blue and gray colorways.



blade

HIGH-PERFORMANCE AIR FLOW SYSTEM



BLADE™ HIGH PERFORMANCE AIR HANDLING SYSTEMS

Engineered to maximize the output from today's high-performance RV air conditioners, Keystone's NEW patented air handling system delivers an average of 20% more cooling power and is built to withstand the rigors of the road. The Blade™ system is designed to accelerate air flow, eliminate leakage and failure points, deliver 360° circulation in the cabin, and withstand environmental and road stressors that lead to reduced performance.

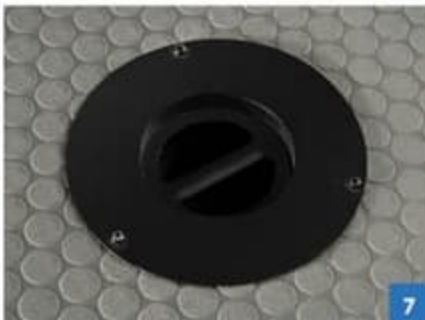
NEW EXTERIOR PAINT DESIGN

The new paint scheme is Raptor's hottest upgrade right now. Design will be offered in blue and gray colorways.



MODERN AMENITIES

From USB ports to sophisticated appliances that eliminate common frustrations, Raptor brings a more modern approach to camping.



1. WIRELESS CHARGING

Quickly and conveniently transfer power to your device without clunky cables.

2. FURRIION® OVEN WITH DRAWER

Stylish design and storage to spare.

3. MORRYDE® FLIP-UP BARSTOOLS (SELECT MODELS)

Space-saving and secure—a Raptor signature innovation.

4. RAPTOR 429 GARAGE

With the touch of a button, the HappiJac™ Power Bed Lift turns your garage into a gathering space with seating for four or a queen-over-queen bunkhouse.

5. FURRIION® BACKUP CAMERA

Ultimate safety and peace-of-mind for changing lanes, merging, and making wide turns.

6. MORRYDE® STEP ABOVE™

Safe and secure main entry with strut assist.

7. FRAME-WELDED TIE DOWNS

Industry-leading 5,000 lb capacity tie-downs for increased safety and security.

8. WASHER/DRYER PREP

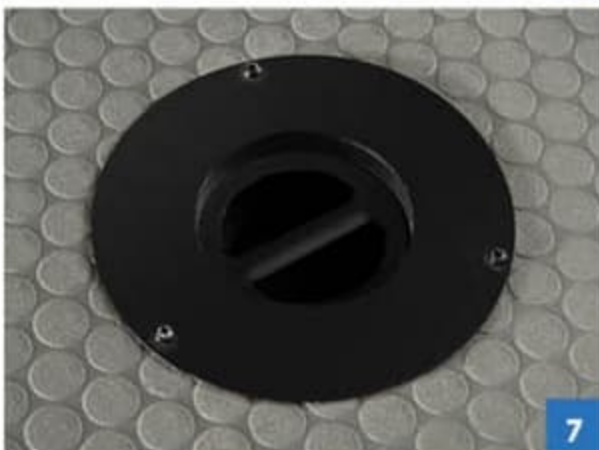
Fully-outfitted to take care of business (and have a little fun while doing it).

9. MORRYDE® ZERO GRAVITY™ RAMP DOOR

Easily access your toys with one touch with no hinges or extra hardware.

MODERN AMENITIES

From USB ports to sophisticated appliances that eliminate common frustrations, Raptor brings a more modern approach to camping.



1. WIRELESS CHARGING

Quickly and conveniently transfer power to your device without clunky cables.

2. FURRIION® OVEN WITH DRAWER

Stylish design and storage to spare.

3. MORRYDE® FLIP-UP BARSTOOLS (SELECT MODELS)

Space-saving and secure—a Raptor signature innovation.

4. RAPTOR 429 GARAGE

With the touch of a button, the HappiJac™ Power Bed Lift turns your garage into a gathering space with seating for four or a queen-over-queen bunkhouse.

5. FURRIION® BACKUP CAMERA

Ultimate safety and peace-of-mind for changing lanes, merging, and making wide turns.

6. MORRYDE® STEP ABOVE™

Safe and secure main entry with strut assist.

7. FRAME-WELDED TIE DOWNS

Industry-leading 5,000 lb capacity tie-downs for increased safety and security.

8. WASHER/DRYER PREP

Fully-outfitted to take care of business (and have a little fun while doing it).

9. MORRYDE® ZERO GRAVITY™ RAMP DOOR

Easily access your toys with one touch with no hinges or extra hardware.



more product detail at
www.keystonerv.com/Raptor

RAPTOR | TOP FEATURES

- On-demand water heater
- LP quick connect for gas grill
- Carpet-free upper bed deck
- MORryde® CRE3000 suspension w/ wet bolts
- White sidewalls w/ new graphics
- EXCLUSIVE Omni-Chill™ technology, dual A/C operation w/ third A/C prep for maximum cooling
- 5,000 lb frame-welded tie-downs
- iN-Command® control system with HVAC and auto-generator start
- MORryde® Zero Gravity ramp door
- Roof wired for solar prep panel (solar panel optional)
- MORryde® Step Above® with strut-assist main entry
- Soft-close hardwood cabinet doors
- MORryde® patio system with side-entry patio steps
- Furrion® wireless backup camera
- Heat pads for tanks
- Roller shades
- MORryde® flip-up bar stools (select models)
- Furrion® stainless steel recessed range, drawer, and convection microwave
- 78" main entry door (largest height in industry)
- Winegard® Wi-Fi antenna
- G-range tires
- LED backlit countertops and crown molding
- Rota-Flex™ pin box and Equa-Flex™ suspension
- Reclining furniture with heat, light, and massage
- USB outlets in all sofa slide-outs
- KeyTV™ – A simplified multi-source signal controller that distributes satellite, cable, and over-the-air feeds via a single coax cable to every television



EXCLUSIVE OMNI-CHILL™
Simultaneous operation of three A/C units for max cooling (up to 8° cooler in 100° ambient temperature in lab testing).



FRAME-WELDED TIE-DOWNS
Industry-leading 5,000 lb capacity tie-downs for increased safety and security.



A KEY PERFORMANCE™ BRAND
Dedicated toy hauler design and manufacturing team to deliver a higher standard of durability and performance.



IN-COMMAND® GENERATION 3 W/ GLOBAL CONNECT
Total control over HVAC, awnings, lights and monitoring system from your smartphone.



more product detail at
www.keystonerv.com/Raptor

RAPTOR | TOP FEATURES

- On-demand water heater
- LP quick connect for gas grill
- Carpet-free upper bed deck
- MORryde® CRE3000 suspension w/ wet bolts
- White sidewalls w/ new graphics
- EXCLUSIVE Omni-Chill™ technology, dual A/C operation w/ third A/C prep for maximum cooling
- 5,000 lb frame-welded tie-downs
- iN-Command® control system with HVAC and auto-generator start
- MORryde® Zero Gravity ramp door
- Roof wired for solar prep panel (solar panel optional)
- MORryde® Step Above® with strut-assist main entry
- Soft-close hardwood cabinet doors
- MORryde® patio system with side-entry patio steps
- Furrion® wireless backup camera
- Heat pads for tanks
- Roller shades
- MORryde® flip-up bar stools (select models)
- Furrion® stainless steel recessed range, drawer, and convection microwave
- 78" main entry door (largest height in industry)
- Winegard® Wi-Fi antenna
- G-range tires
- LED backlit countertops and crown molding
- Rota-Flex™ pin box and Equa-Flex™ suspension
- Reclining furniture with heat, light, and massage
- USB outlets in all sofa slide-outs
- KeyTV™ – A simplified multi-source signal controller that distributes satellite, cable, and over-the-air feeds via a single coax cable to every television



EXCLUSIVE OMNI-CHILL™
Simultaneous operation of three A/C units for max cooling (up to 8° cooler in 100° ambient temperature in lab testing).



FRAME-WELDED TIE-DOWNS
Industry-leading 5,000 lb capacity tie-downs for increased safety and security.



A KEY PERFORMANCE™ BRAND
Dedicated toy hauler design and manufacturing team to deliver a higher standard of durability and performance.



iN-COMMAND® GENERATION 3 W/ GLOBAL CONNECT
Total control over HVAC, awnings, lights and monitoring system from your smartphone.



351 | Tandem axle, 11' garage, u-shaped kitchen



415 | Triple axle, 15' garage, island kitchen, 1 1/2 bath



NEW! **352** | Tandem axle, 11' garage, island kitchen, 1 1/2 bath



423 | Triple axle, 13' garage, u-shaped kitchen



356 | Tandem axle, 11' garage, island kitchen, 1 1/2 bath



426 | Triple-axle, 13' garage, island kitchen



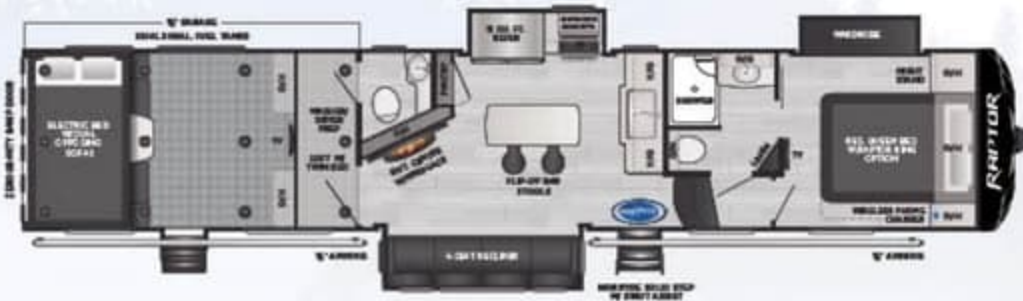
413 | Triple axle, 13' garage, 1 1/2 bath



429 | Triple axle, 13' garage, side patio w/ dual entry, 1 1/2 bath



351 | Tandem axle, 11' garage, u-shaped kitchen



415 | Triple axle, 15' garage, island kitchen, 1 1/2 bath



NEW! **352** | Tandem axle, 11' garage, island kitchen, 1 1/2 bath



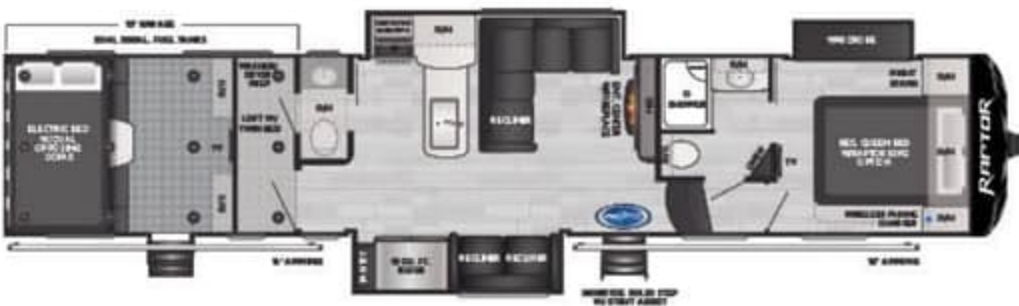
423 | Triple axle, 13' garage, u-shaped kitchen



356 | Tandem axle, 11' garage, island kitchen, 1 1/2 bath



426 | Triple-axle, 13' garage, island kitchen



413 | Triple axle, 13' garage, 1 1/2 bath



429 | Triple axle, 13' garage, side patio w/ dual entry, 1 1/2 bath

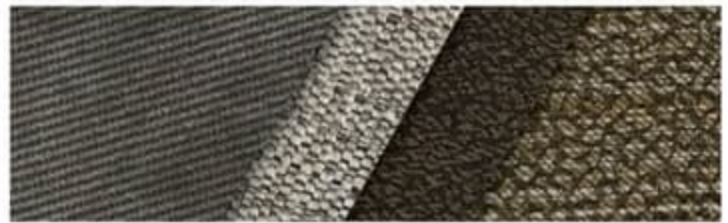
MODEL	WEIGHT	CARRYING CAPACITY	HITCH WEIGHT	FRESH WATER	WASTE WATER	GRAY WATER	LPG	LENGTH*	WIDTH	HEIGHT	AWNING
351	13371	3629	3020	94	44	82	60	39' 0"	8' 4"	13' 2"	19'/15'
352	TBD	TBD	TBD	94	82	82	60	39' 0"	8' 4"	13' 2"	15'/11'
356	13884	3116	3175	94	82	82	60	39' 0"	8' 4"	13' 2"	15'/11'
413	14970	4030	3295	94	82	82	60	43' 6"	8' 4"	13' 6"	16'/12'
415	15051	3949	3480	94	82	82	60	44' 0"	8' 4"	13' 6"	15'/15'
423	15143	3857	3390	94	44	82	60	44' 0"	8' 4"	13' 6"	15'/19'
426	15190	3810	3570	94	82	82	60	43' 6"	8' 4"	13' 6"	16'/16'
429	15805	3195	3600	94	82	82	60	44' 6"	8' 4"	13' 6"	15'/20'

DISCLAIMER: Product information is as accurate as possible as of the date of publication of this brochure. All features, floor plans, and specifications in this brochure are subject to change without notice. Please also consult Keystone's web site at www.keystonerv.com for more current product information and specifications. Tow Vehicle Disclaimer. CAUTION: Owners of Keystone recreational vehicles are solely responsible for the selection and proper use of tow vehicles. All customers should consult with a motor vehicle manufacturer or their dealer concerning the purchase and use of suitable tow vehicles for Keystone products. Keystone disclaims any liability or damages suffered as a result of the selection, operation, use or misuse of a tow vehicle. KEYSTONE'S LIMITED WARRANTY DOES NOT COVER DAMAGE TO THE RECREATIONAL VEHICLE OR THE TOW VEHICLE AS A RESULT OF THE SELECTION, OPERATION, USE OR MISUSE OF THE TOW VEHICLE. *Length is defined as the distance from the centerline of hitch pin/coupler to rear bumper of trailer. Please review owner's manual prior to purchase for more information on service warranties, extended use, towing and maintenance. Owner's manuals can be found at keystonerv.com.

DÉCOR OPTIONS



GRAVITY



QUANTUM

FULL BODY PAINT OPTIONS



1

CHARCOAL

2

ELECTRIC BLUE

VELOCITY PACKAGE *

- 5,000 lb frame-welded tie-downs
- G-Rated tires with 16" premium wheels
- MORyde® Zero Gravity ramp door
- MORyde® Step Above® with strut-assist and 78" main entry door
- Furrion® stainless steel, recessed, 22" oven with stainless drawer
- Furrion® backup camera
- Keystone EXCLUSIVE KeyTV™ and Wi-Fi
- Soft-close hardwood cabinetry
- Roof wired for solar panel, standard (solar panel optional)
- Roller shades

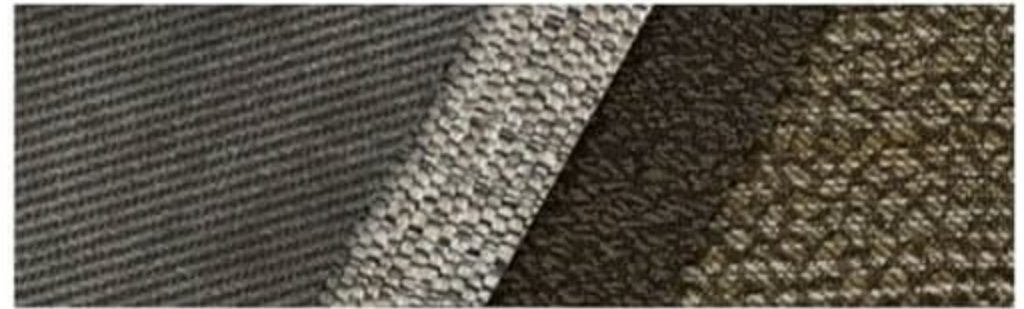
MODEL	WEIGHT	CARRYING CAPACITY	HITCH WEIGHT	FRESH WATER	WASTE WATER	GRAY WATER	LPG	LENGTH*	WIDTH	HEIGHT	AWNING
351	13371	3629	3020	94	44	82	60	39' 0"	8' 4"	13' 2"	19'/15'
352	TBD	TBD	TBD	94	82	82	60	39' 0"	8' 4"	13' 2"	15'/11'
356	13884	3116	3175	94	82	82	60	39' 0"	8' 4"	13' 2"	15'/11'
413	14970	4030	3295	94	82	82	60	43' 6"	8' 4"	13' 6"	16'/12'
415	15051	3949	3480	94	82	82	60	44' 0"	8' 4"	13' 6"	15'/15'
423	15143	3857	3390	94	44	82	60	44' 0"	8' 4"	13' 6"	15'/19'
426	15190	3810	3570	94	82	82	60	43' 6"	8' 4"	13' 6"	16'/16'
429	15805	3195	3600	94	82	82	60	44' 6"	8' 4"	13' 6"	15'/20'

DISCLAIMER: Product information is as accurate as possible as of the date of publication of this brochure. All features, floor plans, and specifications in this brochure are subject to change without notice. Please also consult Keystone's web site at www.keystonerv.com for more current product information and specifications. **Tow Vehicle Disclaimer. CAUTION:** Owners of Keystone recreational vehicles are solely responsible for the selection and proper use of tow vehicles. All customers should consult with a motor vehicle manufacturer or their dealer concerning the purchase and use of suitable tow vehicles for Keystone products. Keystone disclaims any liability or damages suffered as a result of the selection, operation, use or misuse of a tow vehicle. **KEYSTONE'S LIMITED WARRANTY DOES NOT COVER DAMAGE TO THE RECREATIONAL VEHICLE OR THE TOW VEHICLE AS A RESULT OF THE SELECTION, OPERATION, USE OR MISUSE OF THE TOW VEHICLE.** *Length is defined as the distance from the centerline of hitch pin/coupler to rear bumper of trailer. Please review owner's manual prior to purchase for more information on service warranties, extended use, towing and maintenance. Owner's manuals can be found at keystonerv.com.

DÉCOR OPTIONS



GRAVITY



QUANTUM

FULL BODY PAINT OPTIONS



1

CHARCOAL

2

ELECTRIC BLUE

VELOCITY PACKAGE *

- 5,000 lb frame-welded tie-downs
- G-Rated tires with 16" premium wheels
- MORryde® Zero Gravity ramp door
- MORryde® Step Above® with strut-assist and 78" main entry door
- Furrion® stainless steel, recessed, 22" oven with stainless drawer
- Furrion® backup camera
- Keystone EXCLUSIVE KeyTV™ and Wi-Fi
- Soft-close hardwood cabinetry
- Roof wired for solar panel, standard (solar panel optional)
- Roller shades

INTERIOR

- in-Command® smart automation system
- Omni-Chill™ dual A/C operation w/ third A/C prep
- PolarMax™ 18 cu. ft. stainless steel refrigerator
- On-demand water heater
- Roll-up sink cover/drying rack
- Upgraded residential pull-out kitchen faucet
- Solid-surface counter tops with LED backlighting
- Large stainless steel kitchen sink
- Hardwood cabinetry with hidden hinges
- 100 lb. capacity full-extension ball-bearing drawer guides
- Hardwood ceiling treatment with LED accent lighting
- Accent and pendant lighting
- Wood crown molding
- Reclining furniture with heat, light, and massage
- USB ports in sofa slide-out box
- Dual-entrance master bath (most models)
- Power vent in master bathroom
- Porcelain foot-flush toilet
- Fiberglass one-piece shower surround
- Shower skylight
- Residential wooden interior passage door
- Carpet free bedroom
- Raptor control panel with fuel gauge
- Automatic transfer switch with generator prep
- Battery quick-disconnect
- 50 AMP Service
- 35,000 BTU Furnace
- Washer/dryer Prep
- Ducted A/C into garage
- Ducted heat into garage
- Electric beds with dual opposing flip-down sofas
- Pull-down screen in garage
- Pull-down 32" TV in garage
- 50" living room LED TV
- 32" or 24" TV in bedroom per model
- Living area speakers (2) & cargo area speakers (2)
- Carbon monoxide detector
- Smoke detector
- LP gas detector
- Fire extinguisher
- White high-gloss exterior sidewalls
- 6-point hydraulic auto-levelling
- Wireless phone chargers (most models)

EXTERIOR

- KeyShield™ automotive grade painted front cap w/ MaxTern Technology™
- Alphaflex one-piece TPO walkable roof (18-year warranty)
- Oversized convenience center (single-point for all system hook-ups)
- On-board fuel station (30-gallon capacity)
- 30-gallon generator fuel tank
- Exterior cable/satellite hook-up
- Dyna Span® floor decking (25-year warranty)
- Rear LED Lights
- Large LED outdoor activity lights (3)
- One-touch electric awnings with LED Lights (2)
- Aluminum step garage entry
- Large fold-away entry assist handles (2)
- Outside shower—hot and cold
- Large, tinted safety glass windows (80% tint)
- Heated and lighted pass-through storage
- 1" slam-latch baggage doors
- Exterior ladder
- Rain gutters with extended drip spouts
- Ram air ventilation system (in garage)
- New upgraded graphics package with 5-year warranty
- Black tank flush
- Spare tire
- MORyde® CRE3000 w/ wet bolts
- Rota-Flex® pin box
- Dexter® E-Z Lube® 7,000 lb. axles
- 12" x 2" self-adjusting electric brakes
- Heated and enclosed underbelly
- Double-welded aluminum construction
- Norco® slide rooms
- 5" pre-engineered roof truss rafters
- 2 JBL exterior marine grade speakers
- G-rated tires
- LP quick disconnect
- Onan® 5,500 watt gas generator

OPTIONS

- Rear-ramp patio with electric awning and side-entry steps
- King bed
- Three-season patio door
- 265 watt solar panel w/ 2000 watt inverter
- Frameless dual-pane windows
- High definition paint – Charcoal or Electric Blue

INTERIOR

- iN-Command® smart automation system
- Omni-Chill™ dual A/C operation w/ third A/C prep
- PolarMax™ 18 cu. ft. stainless steel refrigerator
- On-demand water heater
- Roll-up sink cover/drying rack
- Upgraded residential pull-out kitchen faucet
- Solid-surface counter tops with LED backlighting
- Large stainless steel kitchen sink
- Hardwood cabinetry with hidden hinges
- 100 lb. capacity full-extension ball-bearing drawer guides
- Hardwood ceiling treatment with LED accent lighting
- Accent and pendant lighting
- Wood crown molding
- Reclining furniture with heat, light, and massage
- USB ports in sofa slide-out box
- Dual-entrance master bath (most models)
- Power vent in master bathroom
- Porcelain foot-flush toilet
- Fiberglass one-piece shower surround
- Shower skylight
- Residential wooden interior passage door
- Carpet free bedroom
- Raptor control panel with fuel gauge
- Automatic transfer switch with generator prep
- Battery quick-disconnect
- 50 AMP Service
- 35,000 BTU Furnace
- Washer/dryer Prep
- Ducted A/C into garage
- Ducted heat into garage
- Electric beds with dual opposing flip-down sofas
- Pull-down screen in garage
- Pull-down 32" TV in garage
- 50" living room LED TV
- 32" or 24" TV in bedroom per model
- Living area speakers (2) & cargo area speakers (2)
- Carbon monoxide detector
- Smoke detector
- LP gas detector
- Fire extinguisher
- White high-gloss exterior sidewalls
- 6-point hydraulic auto-leveling
- Wireless phone chargers (most models)

EXTERIOR

- KeyShield™ automotive grade painted front cap w/ MaxTurn Technology™
- Alphaflex one-piece TPO walkable roof (18-year warranty)
- Oversized convenience center (single-point for all system hook-ups)
- On-board fuel station (30-gallon capacity)
- 30-gallon generator fuel tank
- Exterior cable/satellite hook-up
- Dyna Span® floor decking (25-year warranty)
- Rear LED Lights
- Large LED outdoor activity lights (3)
- One-touch electric awnings with LED Lights (2)
- Aluminum step garage entry
- Large fold-away entry assist handles (2)
- Outside shower—hot and cold
- Large, tinted safety glass windows (80% tint)
- Heated and lighted pass-through storage
- 1" slam-latch baggage doors
- Exterior ladder
- Rain gutters with extended drip spouts
- Ram air ventilation system (in garage)
- New upgraded graphics package with 5-year warranty
- Black tank flush
- Spare tire
- MORryde® CRE3000 w/ wet bolts
- Rota-Flex® pin box
- Dexter® E-Z Lube® 7,000 lb. axles
- 12" x 2" self-adjusting electric brakes
- Heated and enclosed underbelly
- Double-welded aluminum construction
- Norco® slide rooms
- 5" pre-engineered roof truss rafters
- 2 JBL exterior marine grade speakers
- 6-rated tires
- LP quick disconnect
- Onan® 5,500 watt gas generator
- OPTIONS**
- Rear-ramp patio with electric awning and side-entry steps
- King bed
- Three-season patio door
- 265 watt solar panel w/ 2000 watt inverter
- Frameless dual-pane windows
- High definition paint – Charcoal or Electric Blue

BUILT FOR THE LONG HAUL



1 EASIER SHOPPING.

At Keystone, we make choosing an RV as easy as finding the Big Dipper on a dark summer night. With comprehensive online product information, Key Connect™ product advisors, and an unparalleled dealer network, we will help you select the perfect RV for your family's adventure.

2 INNOVATIVE THINKING.

The road's a nicer place when you have the industry's smartest features behind you. Keystone leads the pack in patented innovations that make our RVs safer, more comfortable, and easier to operate.

3 LONG HAUL QUALITY.

To keep you on the road, there are certain things we just won't build a Keystone RV without. Game-changing features like our Unified Wiring Standard, Tru-Fit™ five-point slide construction, and no-fall Tuf-Lok™ A/C duct joiners combined with exhaustive testing and inspections are some of the reasons why Keystone is able to offer our owners the industry's best 3-year limited structural warranty.

4 WORRY-FREE CUSTOMER SERVICE.

Wherever the road takes you, you're never too far from an authorized Keystone service center. We also offer live service assistance, ultra-fast parts shipping, online maintenance tips and tricks, and a single-point warranty claims policy. *That's* peace of mind.

5 KEYSTONE NATION.

When you choose Keystone, you become a part of one of the largest camping families in the country. We're Keystone Nation. A friendly community where people share photos, travel tips and amazing stories — all in the spirit of camaraderie and adventure. Come join us.

BUILT FOR THE LONG HAUL



1 EASIER SHOPPING.

At Keystone, we make choosing an RV as easy as finding the Big Dipper on a dark summer night. With comprehensive online product information, Key Connect™ product advisors, and an unparalleled dealer network, we will help you select the perfect RV for your family's adventure.

2 INNOVATIVE THINKING.

The road's a nicer place when you have the industry's smartest features behind you. Keystone leads the pack in patented innovations that make our RVs safer, more comfortable, and easier to operate.

3 LONG HAUL QUALITY.

To keep you on the road, there are certain things we just won't build a Keystone RV without. Game-changing features like our Unified Wiring Standard, Tru-Fit™ five-point slide construction, and no-fail Tuf-Lok™ A/C duct joiners combined with exhaustive testing and inspections are some of the reasons why Keystone is able to offer our owners the industry's best 3-year limited structural warranty.

4 WORRY-FREE CUSTOMER SERVICE.

Wherever the road takes you, you're never too far from an authorized Keystone service center. We also offer live service assistance, ultra-fast parts shipping, online maintenance tips and tricks, and a single-point warranty claims policy. *That's* peace of mind.

5 KEYSTONE NATION.

When you choose Keystone, you become a part of one of the largest camping families in the country. We're Keystone Nation. A friendly community where people share photos, travel tips and amazing stories — all in the spirit of camaraderie and adventure. Come join us.