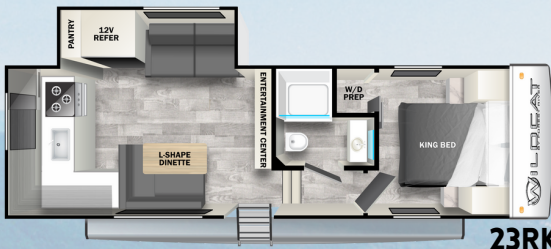


WILDCAT

F I F T H W H E E L S



TRUE HALF-TON TOWABLES



23RK

UVW	HITCH	CCC	LENGTH	HEIGHT	TANK CAPACITY (GAL)		
7,313	1,215	1,962	29' 4"	12' 4"	50	38	38



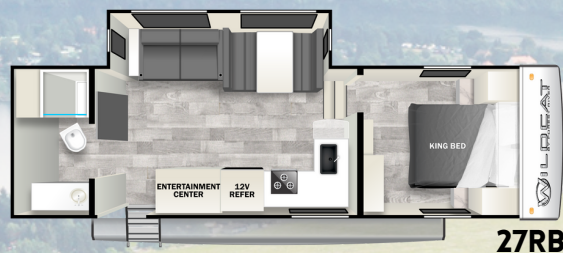
25BH

UVW	HITCH	CCC	LENGTH	HEIGHT	TANK CAPACITY (GAL)		
7,768	1,385	2,227	30'	12' 4"	50	38	38



26RD

UVW	HITCH	CCC	LENGTH	HEIGHT	TANK CAPACITY (GAL)		
7,479	1,131	2,452	29' 11"	12' 4"	50	38	38



27RB

UVW	HITCH	CCC	LENGTH	HEIGHT	TANK CAPACITY (GAL)		
7,533	1,170	2,437	29' 11"	12' 4"	50	38	38



50 AMP SERVICE



2" VACUUM BONDED SIDEWALLS



ELECTRIC FRONT/REAR STABILIZERS



ON DEMAND TANKLESS WATER HEATER



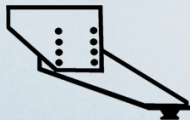
KING SIZE BED



PVC ROOF MEMBRANE (LIFETIME WARRANTY)



2" RECEIVER
3,000 LB. TOW RATING (HT ONLY)



TURNING POINT PIN BOX (HT ONLY)



WIFI PREP



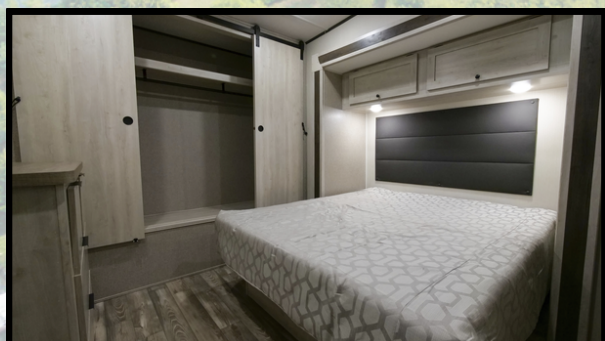
WASHER/DRYER PREP (FLOORPLAN SPECIFIC)



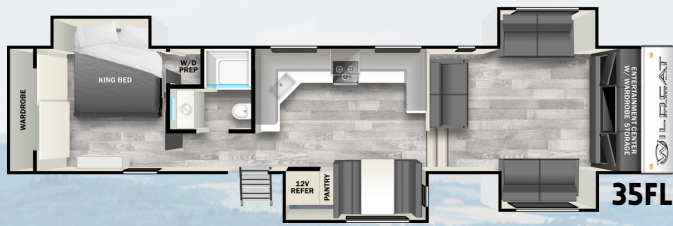
MASSIVE LIGHTED PASS-THROUGH STORAGE



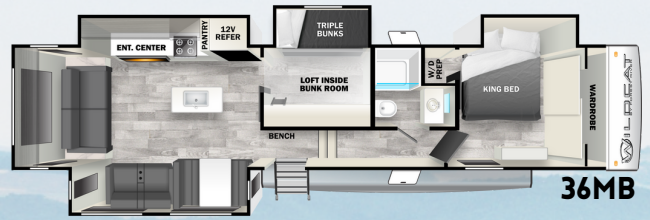
4'X8' SECTIONED UNDERBELLY ARMOR



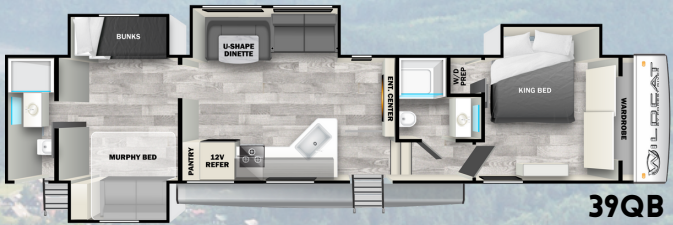
FULL SIZE FIFTH WHEELS



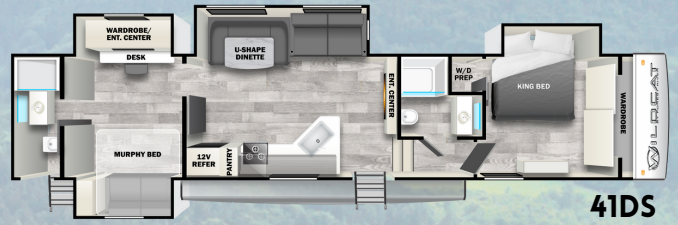
UVW	HITCH	CCC	LENGTH	HEIGHT	TANK CAPACITY (GAL)		
10,708	2,115	3,407	43' 5"	13' 2"	60	76	76



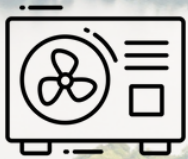
UVW	HITCH	CCC	LENGTH	HEIGHT	TANK CAPACITY (GAL)		
11,538	2,335	2,797	42' 7"	13' 2"	60	45	45



UVW	HITCH	CCC	LENGTH	HEIGHT	TANK CAPACITY (GAL)		
11,630	2,124	2,494	43' 3"	13' 2"	60	114	76



UVW	HITCH	CCC	LENGTH	HEIGHT	TANK CAPACITY (GAL)		
11,603	1,845	2,242	43' 3"	13' 2"	60	114	76



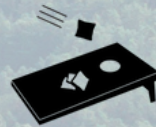
35,000 BTU FURNACE



13.5K BTU A/C, 2ND & 3RD PREP (ONLY 2ND PREP FOR HT)



5/8" TONGUE & GROOVE PLYWOOD FLOORS



STOW-N-GO CORNHOLE BOARDS



ELECTRIC FIREPLACE



OUTSIDE SHOWER



OMNIDIRECTIONAL ROOFTOP ANTENNA



32" WIDE ENTRY DOOR



LINOLEUM THROUGHOUT



50+ GAL. OF FRESH WATER

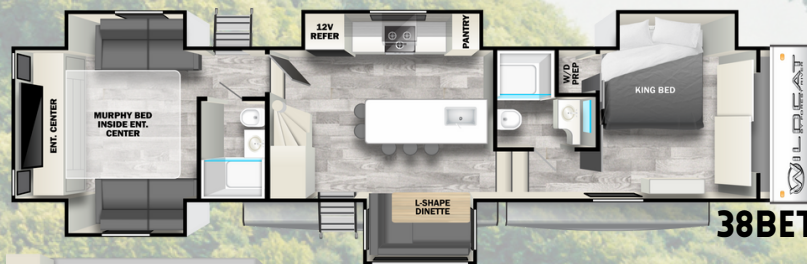


TINTED WINDOWS



ROOF MOUNT SOLAR PREP

CUTTING-EDGE CREATION



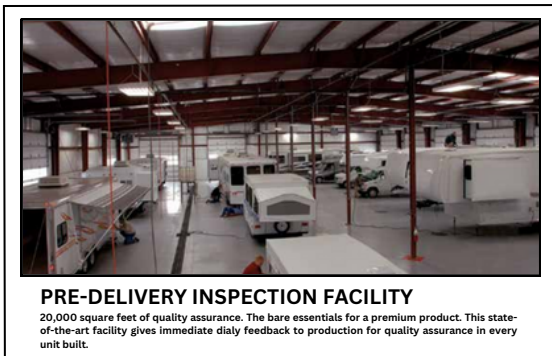
UVW	HITCH	CCC	LENGTH	HEIGHT	TANK CAPACITY (GAL)		
12,173	1,895	3,327	43' 6"	13' 5"	60	76	76

CLIMATE ONE PACKAGE

- VACUUM BONDED, WELDED ALUMINUM STRUCTURE
- BEST IN CLASS SIZE, HIGH EFFICIENCY 35,000 BTU FURNACE
- 13,500 BTU DUCTED A/C SYSTEM W/ 2ND & 3RD A/C PREP
- ON DEMAND TANKLESS HOT WATER HEATER
- DUAL ATTIC VENTS FOR BREATHABLE ROOF
- ELECTRIC FIREPLACE W/ THERMOSTAT CONTROL AND REMOTE
- TUFFLEX PVC ROOF MEMBRANE (LIFETIME WARRANTY)
- 4'X8' SECTIONED UNDERBELLY ARMOR
- 50 AMP ELECTRIC
- DUAL 20 LB. LP TANKS
- SIDEWALLS: 2" HIGH DENSITY BLOCK FOAM INSULATION
- ROOF: RESIDENTIAL FIBERGLASS INSULATION
- FLOOR: RESIDENTIAL FIBERGLASS INSULATION w/ 5/8" TONGUE AND GROOVE PLYWOOD

WILDCAT ONE SERIES PACKAGE

- 17" 2-IN-1 OVEN RANGE
- .9 CU FT OTR MICROWAVE
- 60 GAL OR MORE FRESH WATER CAPACITY
- 10.7 CU FT 12V REFRIGERATOR
- HUGE PANTRY (MOST MODELS)
- HUGE LIFT-UP BOOTH DINETTE STORAGE
- STOW & GO CORN HOLE BOARDS
- KING BED
- MASSIVE PASS-THRU STORAGE
- "EASY CLEAN" FLOORS (NO FLOOR VENTS)
- SOLID STEP AT MAIN ENTRY
- FLUSH FLOOR, LINOLEUM GALLEY SLIDE-OUT
- 32" ENTRY DOOR W/ FRICTION HINGE
- BATTERY DISCONNECT SWITCH
- TINTED WINDOWS
- "ON THE GO" REAR LADDER PREP



PRE-DELIVERY INSPECTION FACILITY

20,000 square feet of quality assurance. The bare essentials for a premium product. This state-of-the-art facility gives immediate daily feedback to production for quality assurance in every unit built.



www.ForestRiverBuyLocal.com

Download our Forest River mobile app or visit our dynamic online manual to enhance your ownership experience. These interactive options provide incredible ease and insight into use, maintenance and enjoyment of your Forest River product.

Ranging from "How-To" videos, pictures and illustrations of various components, systems and features, to fully searchable content and downloadable PDFs for individual component owner's manuals, answers are always just a click away. View the online manual at www.forestriverinc.com/OnlineManual or download our FREE app from the App Store or Good Play!



GVWR (Gross Vehicle Weight Rating) - is the maximum permissible weight of the unit when fully loaded. It includes all weights, inclusive of all fluids, cargo, optional equipment and accessories. For safety and product performance do NOT exceed the GVWR.

GAWR (Gross Axle Weight Rating) - is the maximum permissible weight, including cargo, fluids, optional equipment and accessories that can be safely supported by a combination of all axles.

UVW (Unloaded Vehicle Weight) - is the typical weight of the unit as manufactured at the factory. It includes all weight at the unit's axle(s) and tongue or pin and LP Gas. The UVW does not include cargo, fresh potable water, additional optional equipment or dealer installed accessories.

CCC (Cargo Carrying Capacity)** - is the amount of weight available for fresh potable water, cargo, additional optional equipment and accessories. CCC is equal to GVWR minus UVW. Available CCC should accommodate fresh potable water (8.3 lbs per gallon). Before filling the fresh water tank, empty black and gray tanks for more cargo capacity.

*Estimated Average based on standard build optional equipment. **Estimated average based on standard build optional equipment. Values estimated at time of printing.

Each Forest River RV is weighed at the manufacturing facility prior to shipping. A label identifying the unloaded vehicle weight of the actual unit and the cargo carrying capacity is applied to every Forest River RV prior to leaving our facilities. The load capacity of your unit is designated by weight, not by volume, so you cannot necessarily use all available space when loading your unit.

All information contained in this brochure is believed to be accurate at the time of publication. However, during the model year, it may be necessary to make revisions and Forest River, Inc., reserves the right to make all such changes without notice, including prices, colors, materials, equipment, and specifications as well as the addition of new models and the discontinuance of models shown in this brochure. Therefore, please consult with your Forest River, Inc., dealer and confirm the existence of any materials, design or specifications that are material to your purchase edition.



Learn More
Scan this barcode using
a QR Reader on your
smart phone to learn
more about Forest River.



A Berkshire Hathaway company.