



By **Coachmen**

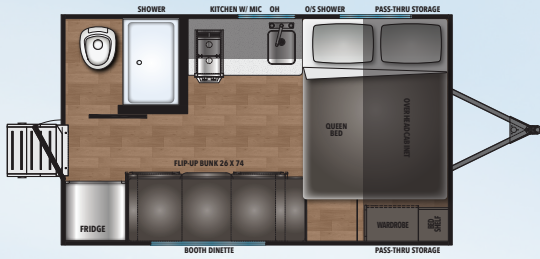
2024 SHASTA COMPACT & i-5 TRAVEL TRAILERS



By **Coachmen**

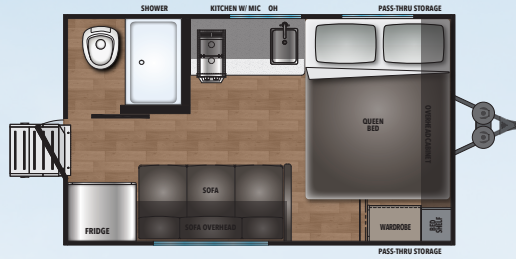
AFFORDABLE QUALITY... RICH HERITAGE – SINCE 1941

COMPACT FLOORPLANS



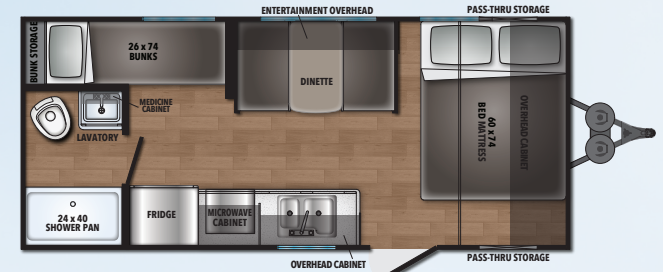
16BH

LENGTH 16'9" | HEIGHT 10'4" | UVW 3,079 | GVWR 4,000
HITCH WEIGHT 349 | TANKS: **FRESH 40**, BLACK 30, GREY 30



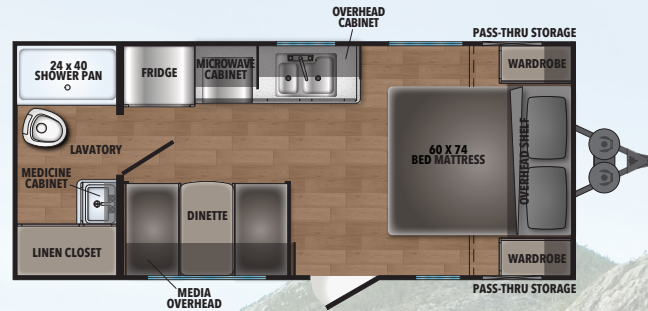
16RE

LENGTH 16'9" | HEIGHT 10'4" | UVW 2,964 | GVWR 4,000
HITCH WEIGHT 302 | TANKS: **FRESH 40**, BLACK 30, GREY 30



18BH

LENGTH 23'1" | HEIGHT 10'6" | UVW 3,400 | GVWR 5,050
HITCH WEIGHT 350 | TANKS: **FRESH 40**, BLACK 30, GREY 30



18FQ

LENGTH 23'1" | HEIGHT 10'6" | UVW 3,489 | GVWR 5,050
HITCH WEIGHT 375 | TANKS: **FRESH 40**, BLACK 30, GREY 30



TST TPMS IS STANDARD EQUIPMENT AND FACTORY INSTALLED!



"Air Carries the Load"
and TST's TPMS provides your family with peace of mind, knowing your tires are safely inflated before, during and after your trip!

TST CUSTOMER SUPPORT:
info@TSTtruck.com | (770) 889-9102

STANDARDS FOR COMPACT SINGLE AXLE

COMPACT PACKAGE INCLUDES

- Tire Pressure Monitoring System
- 6 Gal Gas/Elec DSI Water Heater
- Black Tank Flush
- Microwave Oven
- 13.5 A/C
- Seamless Countertops
- Solar & Back-up Camera Prep
- 4 Stabilizer Jacks
- 10 cu ft Residential Style Refer (4.5CUFT on 14BH and 16RE)
- Bluetooth Portable Speaker
- Battery Disconnect
- 20# LP Bottle
- Under-Mount Kitchen Sink
- Roadside Assistance

EXTERIOR OPTIONS

- Spare Tire & Carrier
- Aluminum Wheels
- 17" Griddle & Grill Combo
- Power Tongue Jack IPO Manual
- 200 Watt Solar/ 30 AMP Controller
- Solid Step

INTERIOR OPTIONS

- 8 cu ft Gas/Elec Refer
- ### HEATING/COOLING OPTIONS
- 15K BTU A/C IPO 13,500

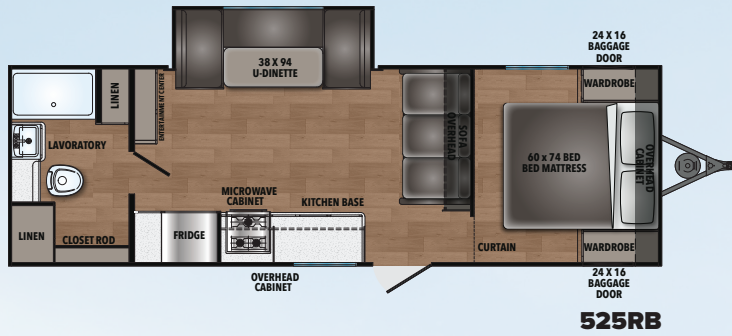


FOR MORE INFORMATION, PICTURES, AND 360 VIRTUAL TOURS VISIT SHASTARVING.COM

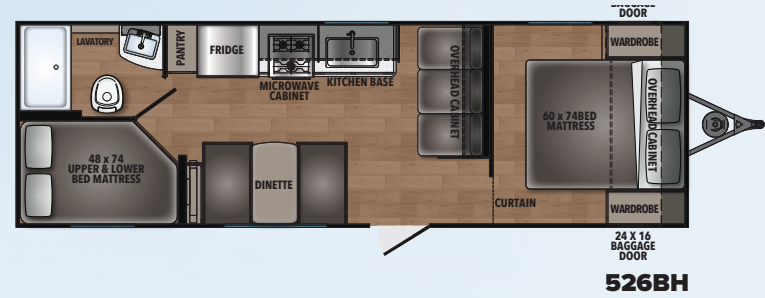


FOLLOW US

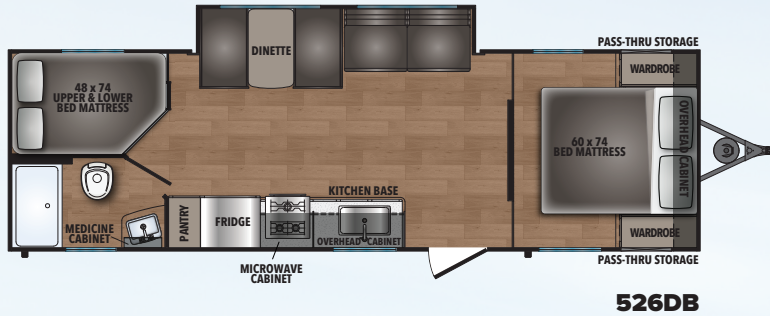




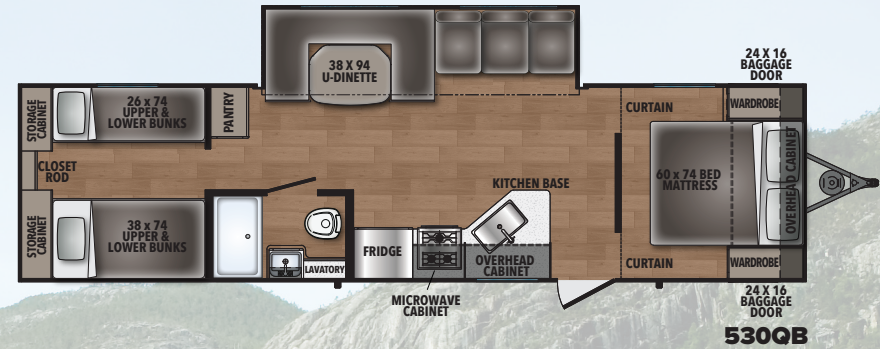
525RB
 LENGTH 30'0" | HEIGHT 11'3" | UVW 5,055
 GVWR 7,500 | HITCH WEIGHT 752
 TANKS: FRESH 40, BLACK 30, GREY 30



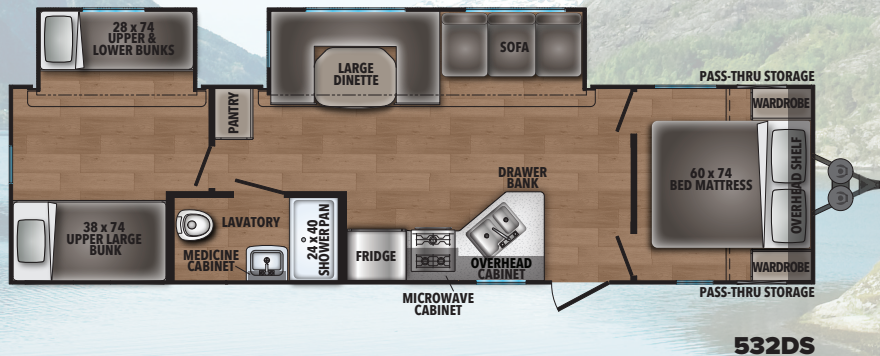
526BH
 LENGTH 29'7" | HEIGHT 11'3" | UVW 4,525
 GVWR 7,500 | HITCH WEIGHT 535
 TANKS: FRESH 40, BLACK 30, GREY 30



526DB
 LENGTH 31'0" | HEIGHT 11'3" | UVW 5,198
 GVWR 7,580 | HITCH WEIGHT 662
 TANKS: FRESH 40, BLACK 30, GREY 30



530QB
 LENGTH 35'4" | HEIGHT 11'5" | UVW 6,136
 GVWR 7,716 | HITCH WEIGHT 716
 TANKS: FRESH 40, BLACK 30, GREY 30



532DS
 LENGTH 33'1" | HEIGHT 11'5" | UVW 6,829
 GVWR 9,567 | HITCH WEIGHT 767
 TANKS: FRESH 40, BLACK 30, GREY 30

STANDARDS FOR i-5 EDITION

BASE CAMP PACKAGE INCLUDES

- Tire Pressure Monitoring System
- 6 Gal Gas/Elec DSI Water Heater
- Black Tank Flush
- Microwave Oven
- 13.5 Ducted A/C
- Seamless Countertops
- Bluetooth Portable Speaker
- Solar & Back-up Camera Prep
- Monitor Panel
- Battery Disconnect
- 4 Stabilizer Jacks
- 10 cu ft Residential Style Refer
- 20# LP Bottle
- Roadside Assistance

EXTERIOR OPTIONS

- Spare Tire & Carrier
- 200 Watt Solar/ 30 AMP Controller

INTERIOR OPTIONS

- 8 cu ft Gas/Elec Refer

HEATING/COOLING OPTIONS

- 15K BTU A/C IPO 13,500
- 50 AMP with 2nd Prep
- 2nd 13.5K A/C with 50AMP Service (26 and Larger)





CUSTOMER SERVICE IS OUR #1 PRIORITY!



PRE-DELIVERY INSPECTION

20,000 square feet of quality assurance. The bare essentials for a premium product. This state-of-the-art facility gives immediate daily feedback to production for quality assurance in every unit built.

FREE MEMBERSHIP
to Forest River Owners' Group

www.forestriverfrog.com



SHASTA HISTORY

- 1941** – Robert Gray built the first Shasta to be used as mobile military housing in California.
- 1951** – Shasta produced what would become the most popular travel trailer of the era, The Toaster on Wheels, featuring the iconic Shasta Wings.
- 1972** – W.R Grace Company buys Shasta from Robert Gray. At this time, Shasta was the largest seller of RV's in the US.
- 1976** – Coachmen Industries buys Shasta RV from W.R. Grace.
- 2010** – Shasta re-emerged as a division of Forest River.
- 2015** – Shasta introduced the 1961 Airflyte re-issue campers.
- 2021** – Celebrating 80 Years of Excellence!



FOLLOW US



Learn More
Scan this barcode using a QR Reader on your smart phone to learn more about Forest River.



A Berkshire Hathaway company.

SHASTA OWNER "DIGITAL KIT" APP

Now you can have your Owner's Manual with you wherever you are. Download our FREE App from the App Store or Google Play and you'll have the information right at your fingertips.



YOUR SHASTA DEALER:



24/7 EMERGENCY ROADSIDE ASSISTANCE WITH VEHICLE PURCHASE*

- | | |
|-----------------|-------------------------|
| TOWING | WINCH-OUT |
| JUMP-STARTS | MOBILE MECHANIC |
| TIRE CHANGES | TECHNICAL |
| FLUID DELIVERY | SUPPORT |
| LOCKOUT SERVICE | DEALER LOCATOR SERVICES |



*VALID FOR 1 YEAR FROM DATE OF PURCHASE

CUSTOMER SATISFACTION



www.ForestRiverBuyLocal.com

Shasta Recreational Vehicles

105 14th Avenue • Middlebury, IN 46540 • (574) 825.7178

www.ShastaRVing.com

All information contained in this brochure is believed to be accurate at the time of publication. However, during the model year, it may be necessary to make revisions and Forest River, Inc., reserves the right to make all such changes without notice, including prices, colors, materials, equipment and specifications as well as the addition of new models and the discontinuance of models shown in this brochure. Therefore, please consult with your Forest River, Inc., dealer and confirm the existence of any materials, design or specifications that are material to your purchase decision.
© Copyright 2023 Shasta, a Division of Forest River Inc – All Rights Reserved.