

Navion

WINNEBAGO



Why Navion?

- Mercedes-Benz® Sprinter chassis
- Primera® swivel cab seats
- Available cabover bunk
- Radio/Rearview monitoring system
- Available Mobileye® Collision Avoidance System
- Norcold® double-door refrigerator/freezer
- Powered patio awning w/LED lighting
- MCD solar/blackout roller shades
- Flex Bed system (24V)
- Available dual-pane Euro windows with screen and insulated shade



On the Cover: 24V Tuscan Sun Full-Body Paint

24V Arrow with High-Gloss Marbella Cherry/Canvas Cabinetry

Class 'C' Doesn't Stand for Compromise

If you want comfort and style in a go-anywhere motorhome that is built to last, the Navion® stands alone. Combining the heralded Mercedes-Benz Sprinter chassis with Winnebago's® legendary SuperStructure® construction, you get a coach that is fuel-efficient, powerful, and built to the highest standards. Three distinct floorplans give you choices on dining and sleeping configurations

to fit your traveling needs, including a spacious U-shaped dinette in the 24J, the queen bed in the 24G, or the Flex Bed system in the 24V that can convert from a queen bed into separate twin beds. Thoughtful touches such as swivel cab seats with boosters and LED lighting show you that every detail was carefully considered. Make your way to the head of the class in your new Navion.



Recognized Quality

The Recreation Vehicle Dealer Association annually rates RV manufacturers and awards the Quality Circle Award to manufacturers that provide exceptional products, service and support. Winnebago Industries is proud to be the only manufacturer that has received this award every year since its inception.



24V Arrow with High-Gloss Marbella Cherry/Canvas Cabinetry

The Navion has a floorplan to fit your family. Select the 24V or 24G (optional) for a Fold N Tumble sofa with a movable table that allows for a new, larger standard dinette, or the 24J with a large U-shaped dinette with footrests. No matter which floorplan you select, your evening entertainment is covered with an HDTV and stereo system with CD/DVD player. LED lighting, MCD solar/blackout roller shades and a skylight with shade all work together to give you full control of your light and privacy levels.



24V Sofa as Bed



24V Sofa with Table



24V Available StudioLoft



24V Available StudioLoft Curtain



24V Behind TV Storage



Interior Vent



MCD Solar/Blackout Roller Shades

The galley is thoroughly planned to be functional and stylish while conserving space in a 24-foot floorplan. Meal prep is made easy with a two-burner range top and a microwave/convection oven that cooks and browns like an oven in a fraction of the time. Stock up on fresh ingredients or store leftovers in the Norcold® double-door refrigerator/freezer. The Interior Upgrade Package completes the look with a frosted backslash, accent lighting and sink covers.



24V Galley



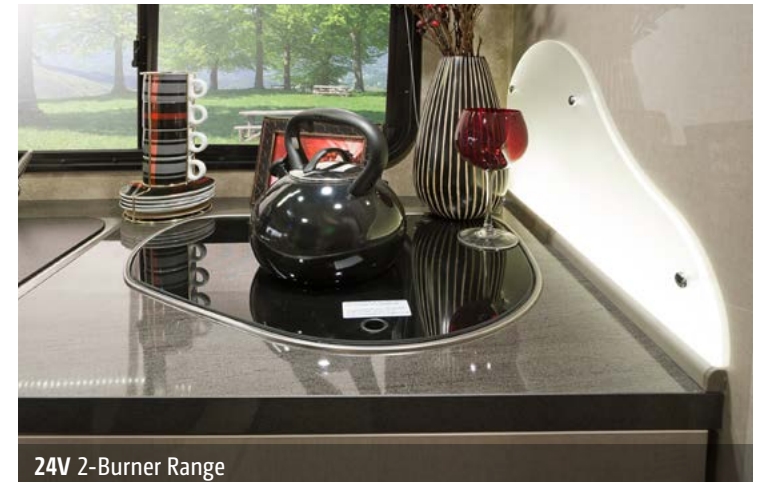
24V Refrigerator



24V Full-Extension Drawers



24V Microwave/Convection Oven with Touch Controls



24V 2-Burner Range



24V Flex Bed as Queen Bed

Would you prefer a queen bed or two twin beds? With the Flex Bed System in the 24V, you get both. It quickly converts from twin beds to a queen bed and back to fit your traveling demands. For a standalone queen bed, select corner model (24J) or a walk-around bed with a slide out (24G). The bed you choose can be enhanced with the available Froli® deluxe sleep system that provides additional support for the perfect night's sleep. An HDTV is also available to help ease you to sleep.



24V Available Bedroom HDTV



24V Wardrobe



24V Bathroom



24V Flex Bed as Twin Beds



Dash

Since its introduction, the Navion showed the true potential of the Mercedes-Benz Sprinter chassis. Today the Sprinter chassis boasts a 188-hp turbo-diesel engine with a 5-speed automatic tip-shift transmission. Fully adjustable cab seats keep you comfortable on your journeys while a 6" touch panel gives you command of the cab stereo and backup camera. Upgrade to the Rand McNally RV GPS for a CD/DVD player, touchscreen, and turn-by-turn directions. For more peace of mind, upgrade to the available Mobileye Collision Avoidance System.



24V Cab Seats with Movable Table

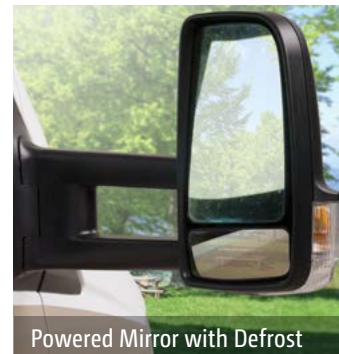


24V Passenger Seat Reclined



24V Powered Patio Awning

You won't find a more beautiful Class C motor home than the Navion with available full-body paint, stylized aluminum wheels, or available chrome wheels. The powered patio awning with LED lighting even comes with a protective metal wrap (requires full-body paint) to match the paint scheme. Cycling enthusiasts will appreciate the available rear-mounted bike rack while everyone can benefit from the plentiful exterior storage.



Powered Mirror with Defrost



Powered Patio Awning with LED Lighting



Entrance Door and Steps



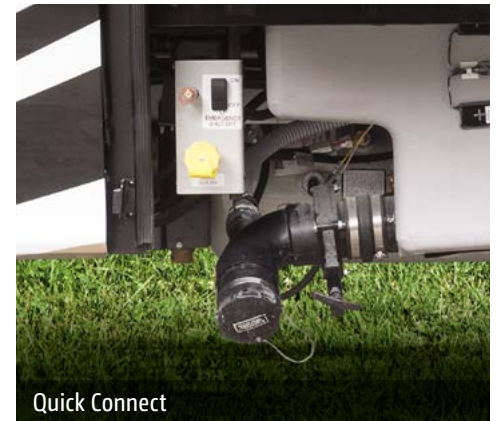
Exterior Rear Storage



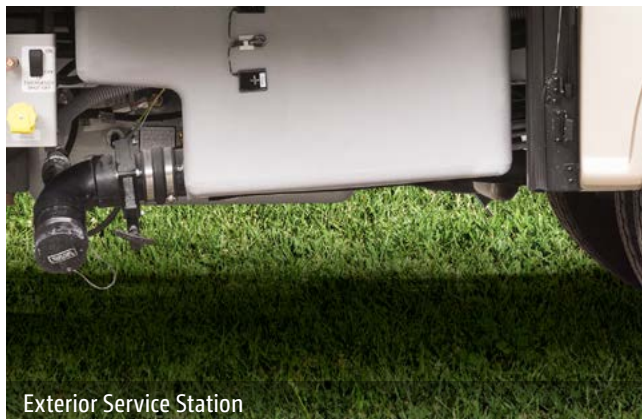
Available Stylized Chrome Wheels



Exterior Front Storage



Quick Connect



Exterior Service Station



Exterior Light and Speaker

Fiberglass Roof The crowned, one-piece fiberglass roof is backed by a 10-year limited parts-and-labor roof skin warranty.

Rubber Can't Cut It Rubber roofs used by competitors can streak and degrade over time.

Interlocking Joints Specially engineered interlocking joints connect the floor, sidewalls and roof where competitors often rely on simple screws to bear the weight.



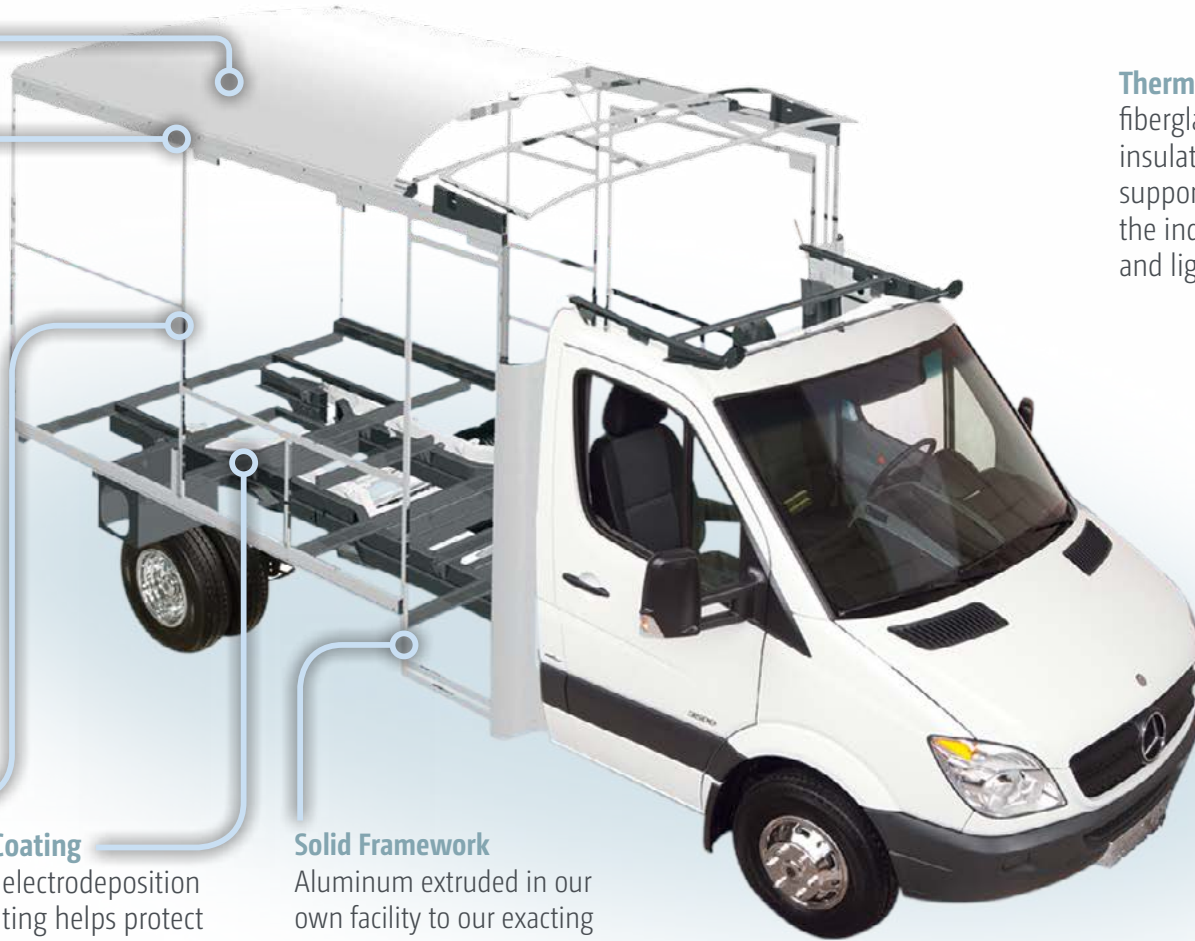
Embedded Steel Metal substructures embedded into the sidewall provide solid attachment points to keep cabinets and appliances mounted securely in place.

E-Coating An electrodeposition coating helps protect critical steel components.

Solid Framework Aluminum extruded in our own facility to our exacting standards creates an extremely strong and solid structural framework.

Thermo-Panel® Sidewalls By layering fiberglass and high-density block foam insulation with welded aluminum support structures, we create some of the industry's strongest, most durable and lightweight sidewalls.

Laser-Cut Tubing Precision laser cutters create precise joints in structural steel that are stronger and require less welding.



SUPER STRUCTURE

BUILT TO LAST

Every coach—from our smallest Class C to our largest diesel-pusher model—is built to Winnebago's® legendary SuperStructure® construction standards. It's a process developed and refined over more than 50 years of building some of the strongest, most durable coaches in the industry.

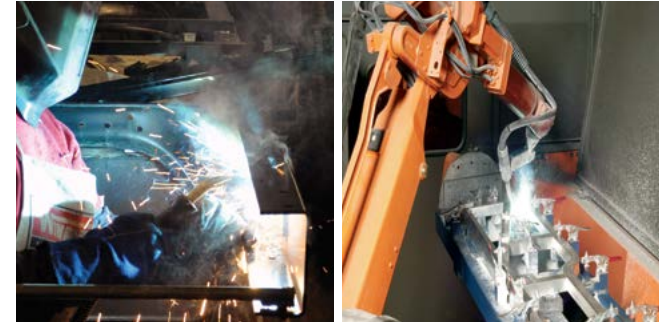
TESTING Before rolling out of our factories, every coach undergoes an extensive 113-point inspection. Each coach also passes a high-pressure water test that simulates rain at a rate of 50-inches per hour to check for leaks. During the design process, our computer simulations, physical testing center, and rigorous test track ensure each model is built to last.



DETAILS At Winnebago, we treat the features you can't see with the same care as the ones you can. Look in the access panels of some of our competitors' coaches and you'll see loose insulation and wires haphazardly strewn about. Winnebago maintains a clean fit and finish throughout so your coach will last for the long haul.



BUILT IN-HOUSE We extrude our own aluminum. We rotocast our own plastic components. In fact, we manufacture most of our own parts so they are designed to fit the space, rather than fitting the space to an awkward off-the-shelf component size.



**SUPER
STRUCTURE**
BUILT TO LAST

Visit BetterBuiltRVs.com to gain real insight into what goes into a Winnebago motorhome.

TAKE A TOUR We're proud of our processes, state-of-the-art facilities, and the people who make Winnebago number one. We invite you to visit our complex in Forest City, Iowa, for a firsthand look at the dedication and technology behind every motorhome we build.

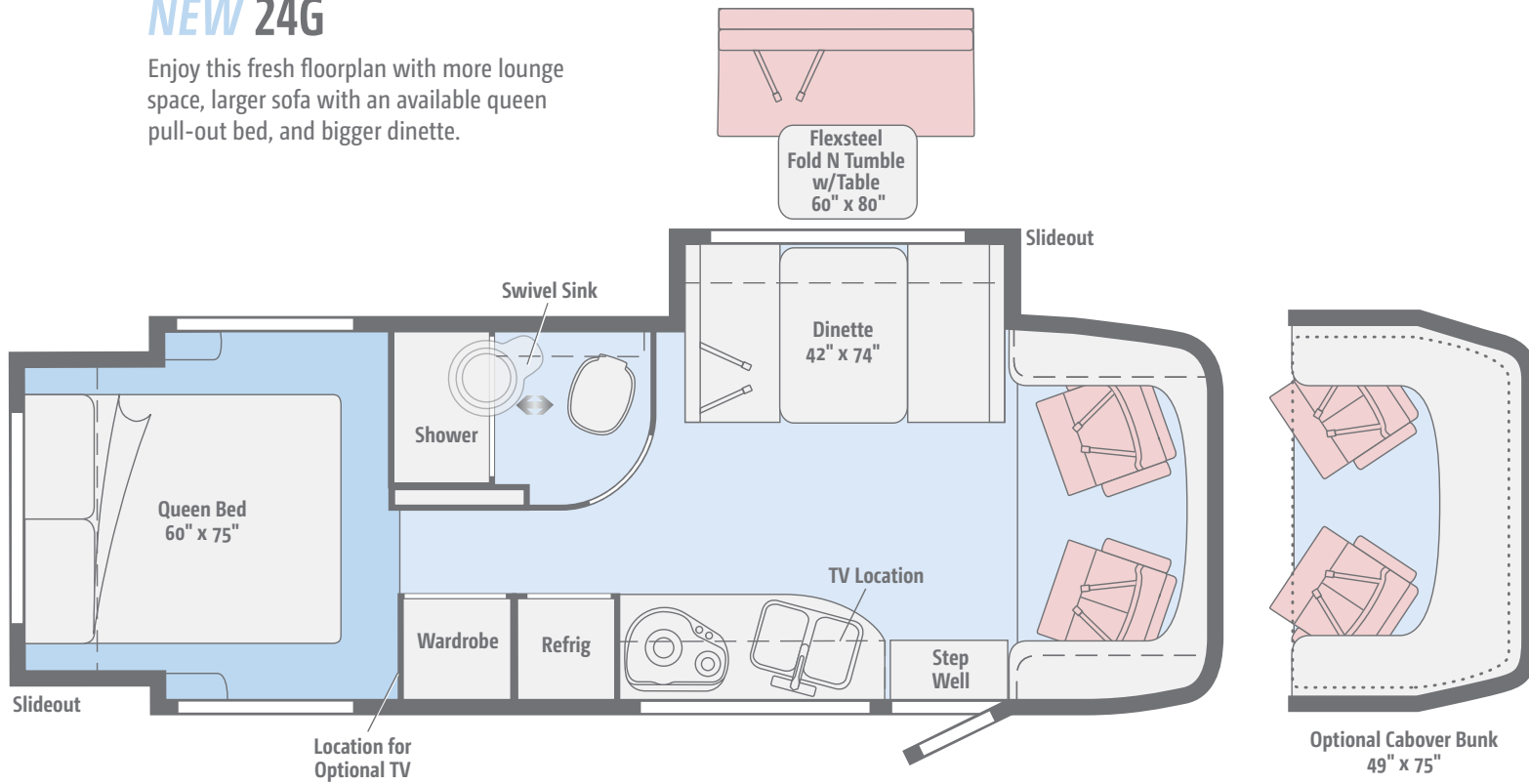
Call (641) 585-6936 or (800) 643-4892 or visit us online at Winnebagolnd.com/company/visit for more information.



[Click here to explore this floorplan's web page.](#)

NEW 24G

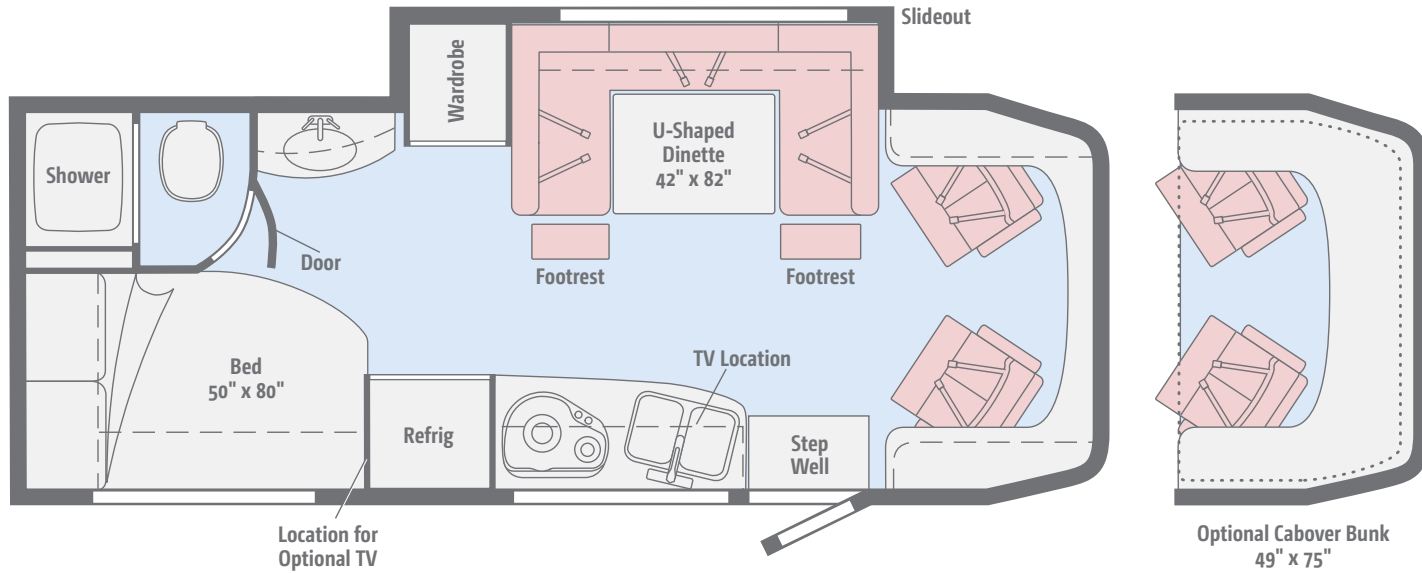
Enjoy this fresh floorplan with more lounge space, larger sofa with an available queen pull-out bed, and bigger dinette.



[Click here to explore this floorplan's web page.](#)

24J

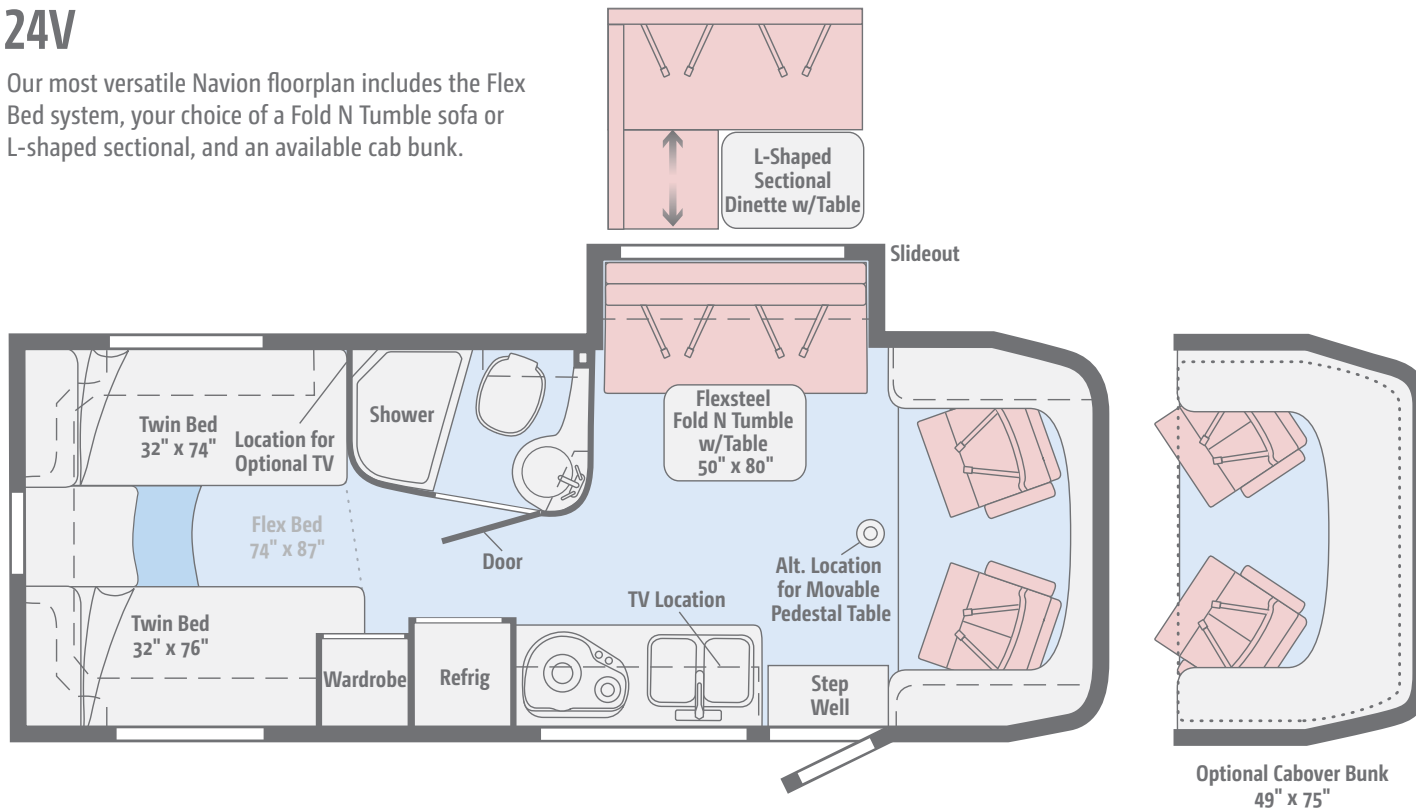
Dine with ease or relax and watch the 28" HDTV from the comfort of the U-shaped dinette with footrests. Add a third sleeping area by choosing the cab bunk.



[Click here to explore this floorplan's web page.](#)

24V

Our most versatile Navion floorplan includes the Flex Bed system, your choice of a Fold N Tumble sofa or L-shaped sectional, and an available cab bunk.



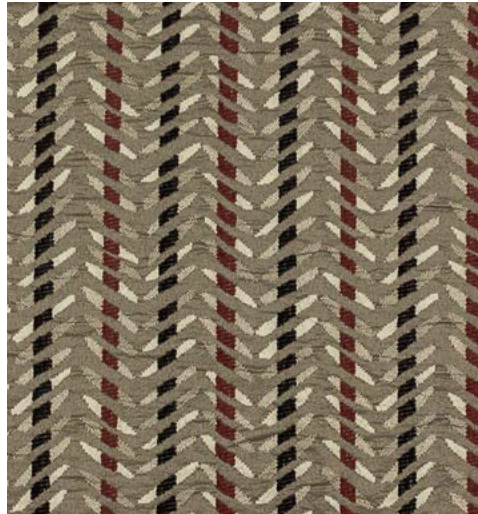
Prima	Vinyl	Carpet

Choose from four collections and two wood finishes.

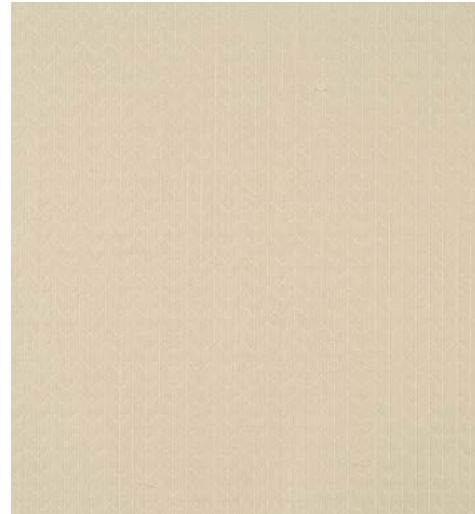
Arrow



Primera



Feature Fabric



Bed Cover



Vinyl Flooring



Aosta Cherry/Canvas*



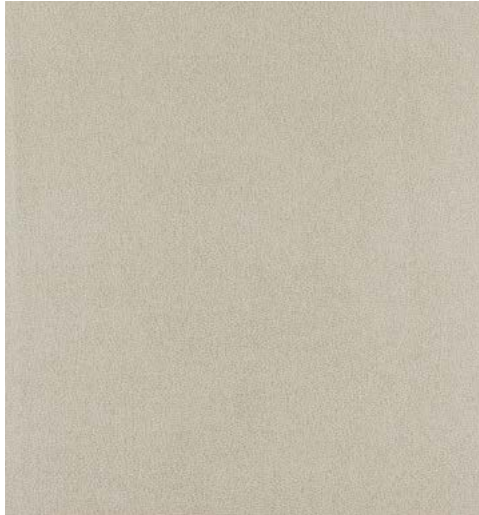
High-Gloss
Marbella Cherry/Canvas*

**High-gloss finish in select areas*

Winnebago® reserves the right to change décor materials and specifications without notice or obligation.

Choose from four collections and two wood finishes.

Tidewater



Primera



Feature Fabric



Bed Cover



Vinyl Flooring



Aosta Cherry/Canvas*



High-Gloss
Marbella Cherry/Canvas*

**High-gloss finish in select areas*

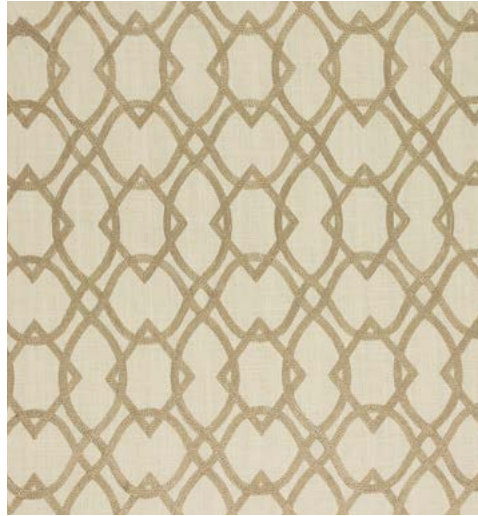
Winnebago reserves the right to change décor materials and specifications without notice or obligation.*

Choose from four collections and two wood finishes.

Honeycomb



Primera



Feature Fabric



Bed Cover



Vinyl Flooring



Aosta Cherry/Canvas*



High-Gloss
Marbella Cherry/Canvas*

**High-gloss finish in select areas*

Winnebago reserves the right to change décor materials and specifications without notice or obligation.*

Choose from four collections and two wood finishes.

Zinc



Primera



Feature Fabric



Bed Cover



Vinyl Flooring



Aosta Cherry/Canvas*



High-Gloss
Marbella Cherry/Canvas*

**High-gloss finish in select areas*

Winnebago reserves the right to change décor materials and specifications without notice or obligation.*



Copper Canyon
DELUXE GRAPHICS



Carbon Red
DELUXE GRAPHICS



Coffee
FULL-BODY PAINT



Tuscan Sun
FULL-BODY PAINT



Pumpkin Spice
FULL-BODY PAINT



Bay Mist
FULL-BODY PAINT



Iris
FULL-BODY PAINT



Beachwood
FULL-BODY PAINT

Weights & Measures	24G	24J	24V
Length	25'5"	25'5"	25'5"
Exterior Height ¹	11'2"	11'2"	11'2"
Exterior Width	7'6"	7'6"	7'6"
Exterior Storage ² (cu. ft.)	53	48	43
Awning Length	16'	16'	16'
Interior Height	6'8"	6'8"	6'8"
Interior Width	7'3"	7'3"	7'3"
Freshwater Tank Capacity ³ (gal.)	31	32	31
Water Heater Capacity (gal.)	Continuous	6	6
Holding Tank Capacity - Black/Gray ³ (gal.)	34/40	34/40	36/36
LP Capacity ⁴ (gal.)	13	13	13
Fuel Capacity (gal.)	26.4	26.4	26.4
GCWR ⁵ (lbs.)	15,250	15,250	15,250
GVWR (lbs.)	11,030	11,030	11,030
GAWR - Front (lbs.)	4,410	4,410	4,410
GAWR - Rear (lbs.)	7,720	7,720	7,720
Wheelbase	170"	170"	170"
Seating Capacity	3	5	4

Mercedes-Benz® Sprinter Chassis

3.0L 6-cylinder, 188-hp, turbo-diesel engine, 5-speed automatic tip-shift transmission, 220-amp. alternator

Adaptive ESP® technology

Hydraulic brakes w/ABS

Trailer Hitch⁶ 5,000-lb. drawbar/500-lb. maximum vertical tongue weight w/7-pin connector

Stainless steel wheel liners (24J, 24V)

Alcoa forged aluminum wheels (24G)

OPTIONAL EQUIPMENT

Stylized chrome wheels (24J, 24V)

Alcoa forged aluminum wheels (24J, 24V)

Cab Conveniences

Radio/Rearview Monitor System 6" touch screen color monitor, handheld remote, iPod®/MP3 input, color rear camera

Cab seats armrest, adjustable lumbar support, headrest, recline, swivel and slide

Airbags driver and passenger

3-point seat belts

Power door locks w/remote

Power windows

Power mirrors w/defrost and turn signals

Cruise control

Chassis/house battery radio power switch

Power steering w/tilt wheel

Sunvisors

12-volt powerpoints

Pleated windshield blinds

Privacy curtain (cab windows)

Dash appliqué package

OPTIONAL EQUIPMENT

Infotainment Center with Rand McNally RV GPS 6" touch screen color monitor w/split screen function, Rand McNally RV GPS safe & easy routing, amenities & tools, trips & content, turn-by-turn voice guidance, AM/FM radio w/CD/DVD player, handheld remote, SiriusXM™ (subscription not included), iPod/iPhone® audio integration, Bluetooth™, color rearview camera, USB connection

2 cab seat lounge cushions

Sliding, pleated windshield blinds

Mobiley® Collision Avoidance System

Interior

Stereo System AM/FM, alarm clock, CD/DVD player, input jack, Bluetooth™, 2 speakers and subwoofer

28" HDTV

LED lights

Satellite system ready

Monitor panel

Amplified digital HDTV antenna

Roof vent w/electric lift and ventilator fan (NA w/available powered skylight)

Mini blinds (galley)

Skylight w/shade

MCD solar/blackout roller shades

Tinted coach windows

Soft vinyl ceiling

Vinyl flooring throughout (24G front to bedroom)

Assist bar

Mirror (24V)

USB charger

Interior Upgrade Package frosted galley backsplash w/accent lighting, two sink covers

OPTIONAL EQUIPMENT

Powered skylight/roof vent w/sliding screen and pleated shade

Dual-pane Euro acrylic windows

Sofa Sleeper (24G)

Galley

Laminate countertops

Microwave/convection oven w/touch control

2-burner range top w/glass cover

Norcold® double-door refrigerator/freezer

Cold water filtration system

Water-pump switch w/light

Bath

Retractable, self-cleaning shower screen

Flexible showerhead

Skylight

Porcelain toilet w/foot pedal and sprayer (24J, 24V)

Porcelain toilet w/electric flush (24G)

Powered roof vent

Towel ring(s)

Towel bar(s)

Tissue holder

Robe hook(s) (24J)

Medicine cabinet (24G)

OPTIONAL EQUIPMENT

Powered ventilator fan

Bedroom

Corner bed w/headboard, foam mattress, mattress cover, and access to storage below (24J)

Queen bed w/memory foam mattress and mattress cover (24G)

Flex Bed System twin beds/queen bed w/foam mattresses and access to storage below (24V)

MCD blackout roller shades

OPTIONAL EQUIPMENT

24" HDTV

Froli deluxe sleep system (NA 24G)

Exterior

- Automatic entrance door step(s)
- LED porch light w/interior switch
- Stepwell light w/interior switch
- Front and rear mud flaps
- Premium high-gloss skin
- Powered patio awning w/LED lights (full-body paint option includes metal wrap)
- Lighted storage compartments
- Exterior speakers

OPTIONAL EQUIPMENT

- Bike rack

Heating & Cooling

- 15,000 BTU air conditioner
- 20,000 BTU low-profile furnace

OPTIONAL EQUIPMENT

- 15,000 BTU air conditioner w/heat pump

Electrical System

Service Center light, cable TV input, 30-amp. power cord, portable satellite dish hookup, QuickPort® service connection hatch

- Auxiliary start circuit
- Exterior AC duplex
- Exterior antenna jack
- Battery disconnect system (coach)
- Automatic dual-battery charge control
- AC/DC load center, 45-amp. converter/charger
- 2 deep-cycle, Group 24 RV batteries
- 3,600-watt Cummins® Onan MicroQuiet™ LP generator
- 1,000-watt DC/AC inverter

OPTIONAL EQUIPMENT

- 3,200-watt Cummins Onan diesel generator
- Solar panel/battery charger

Plumbing System

Service Center color-coded labels, pressurized city water hookup/tank diverter valve, drainage valves, exterior wash station w/lighted pump switch

- 10' sewer hose
- TrueLevel™ holding tank monitoring system
- 6-gallon 110-volt/LP water heater w/Energy Management System (NA 24G)
- Tankless water heater (24G)
- Permanent-mount LP Tank w/remote fill w/power switches
- Winterization Package water heater bypass valve and siphon tube
- On-demand water pump
- Lockable water tank fill
- Sewage pump macerator (24G, 24V)
- Holding tank flushing system

OPTIONAL EQUIPMENT

- Heated drainage system
- Tankless water heater (24J, 24V)

Safety

- LP, smoke, and carbon monoxide detectors
- 10 BC fire extinguisher
- Ground fault interrupter
- Child seat tether anchor (24J)
- High-mount brake lamps
- Daytime running lamps

Warranty⁶

- 12-month/15,000-mile basic limited warranty⁷
- 36-month/36,000-mile limited warranty on structure⁷
- 10-year limited parts-and-labor warranty on roof skin⁷

FOOTNOTES

1. The height of each model is measured to the top of the tallest standard feature and is based on the curb weight of a typically equipped unit. The actual height of your vehicle may vary by several inches depending on chassis or equipment variations. Please contact your dealer for further information.
2. The load capacity of your motorhome is designated by weight, not by volume, so you cannot necessarily use all available space when loading your motorhome.
3. Capacities are based on measurements prior to tank installation. Slight capacity variations can result due to installation applications.
4. Capacities shown are tank manufacturer's listed water capacity (WC). Actual filled LP capacity is 80% of listing due to overfilling prevention device on tank.
5. Actual towing capacity is dependent on your particular loading and towing circumstances which includes the GVWR, GAWR, and GCWR, as well as adequate trailer brakes. Please refer to the Operator's Manual of your vehicle for further towing information.
6. See separate chassis warranty.
7. See your dealer for complete warranty information.

NA Not Available

Not all items available in combination. See dealer for details.

Winnebago's* continuing program of product improvement makes specifications, equipment, model availability, and prices subject to change without notice. Published content reflects the most current product information at time of printing. Please consult your dealer for individual vehicle features and specifications.





Let us host your next

Adventure



WGOAdventures.com



Show your Winnebago love with high-quality gifts and wearables.



Apparel | Gifts | Parts | Gear

WinnebagoOutdoor.com

Find your style



Connect with Winnebago (Click one of the following)



Like us



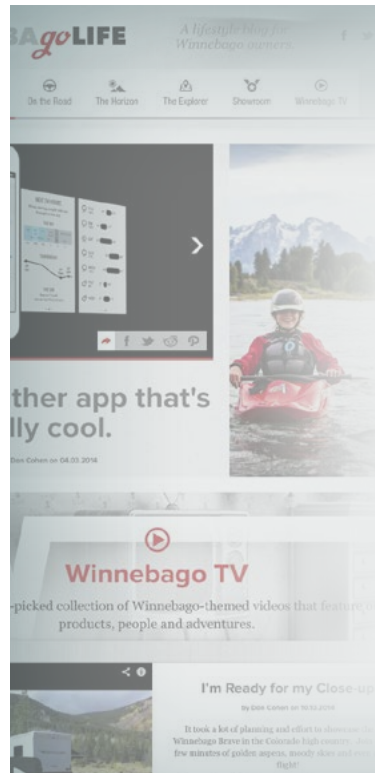
Follow us



Watch us

WinnebagoInd.com Has All The Answers

Visit WinnebagoInd.com on your computer, smartphone, or tablet for the latest product information and updates.



Welcome to GoLife!

Visit our lifestyle blog for motorhome news, personal travelogues, and community stories.

WinnebagoLife.com



PREFERRED CARE PROGRAM

We back our motorhomes with best-in-class support both before and after the sale:

- 12-month/15,000-mile basic limited warranty
- 36-month/36,000-mile limited warranty on structure
- 10-year limited parts-and-labor warranty on fiberglass roof
- Complimentary 24-hour roadside assistance program
- TripSaver® Fast Track Parts guarantees that in-stock warranty parts ship directly to your dealer within 24 hours
- National dealer service network



For more information, visit us
WGOService.com



From RV to personal insurance, Winnebago RV Insurance can provide all the coverage and services you need to feel at home on the road.

For more information:
(800) 642-4892



CONTACT US

GENERAL INQUIRIES

Corporate Switchboard
(641) 585-3535

CURRENT PRODUCT OWNER AND SERVICE-RELATED INQUIRIES

(800) 537-1885
or winnebagoind.com

NEW VEHICLE SALES INQUIRIES

sales@winnebagoind.com

FAX

(641) 585-6966

POSTAL ADDRESS

Winnebago Industries, Inc.
P.O. Box 152
Forest City, IA 50436

STREET ADDRESS

Winnebago Industries, Inc.
605 West Crystal Lake Road
Forest City, IA 50436



Join the Club, Join the Fun

Here's the perfect way to begin your life on the road as the owner of a new Winnebago – by joining the exclusive WIT Club. Start your adventure with other fun-loving WIT Club members from across the country and get the most out of your new Winnebago motorhome.



Members enjoy:

- Caravans and rallies
- Newsletters
- Local and state group activities
- RV travel benefits

See more at
WITClub.com



Grand National Rally

Each year, thousands of Winnebago owners descend upon Forest City, Iowa. Rally-goers enjoy an unforgettable week reconnecting with friends, taking tours, participating in activities, and more. Join the adventure next July!