

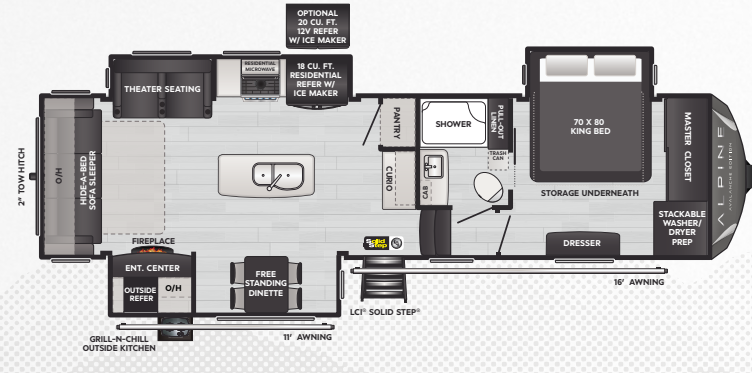


KEYSTONE
RV COMPANY

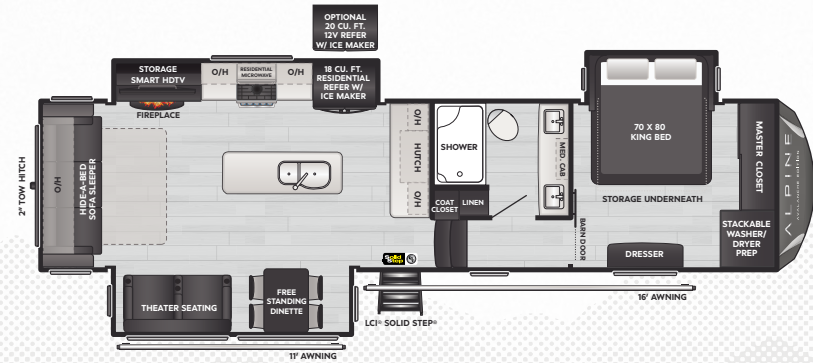
ALPINE

AVALANCHE EDITION

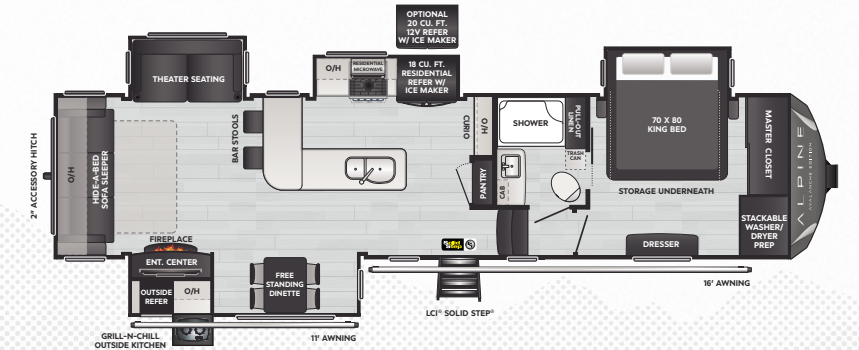
2025 | FIFTH WHEELS



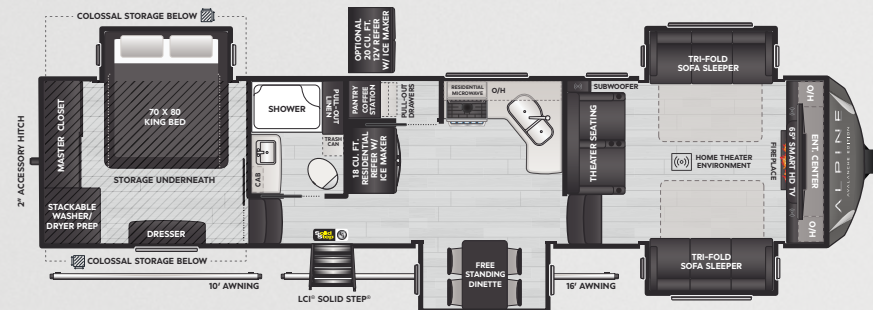
302RS | WEIGHT 11898 | LENGTH 34' 9"



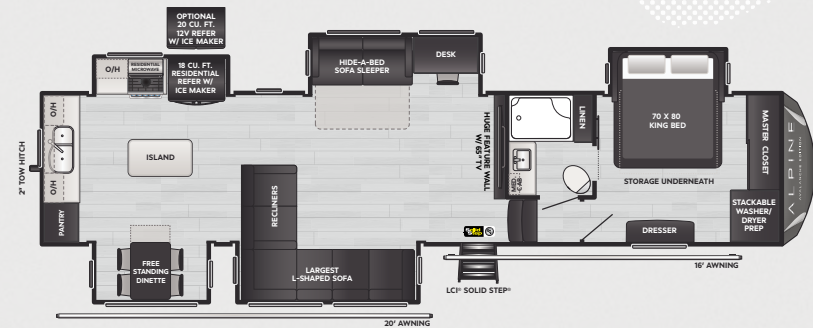
321RL | WEIGHT 12008 | LENGTH 36' 6"



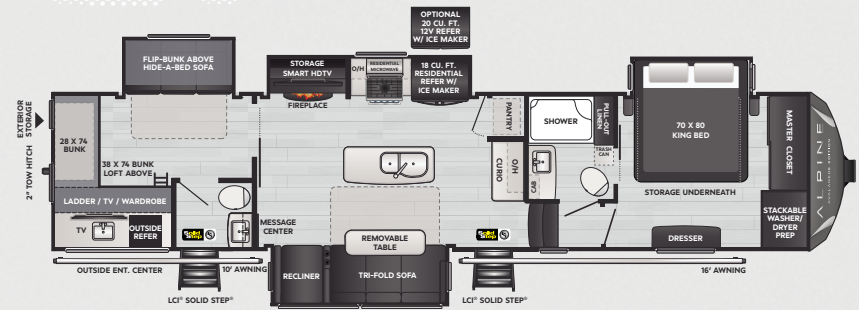
338GK | WEIGHT 12685 | LENGTH 37' 11"



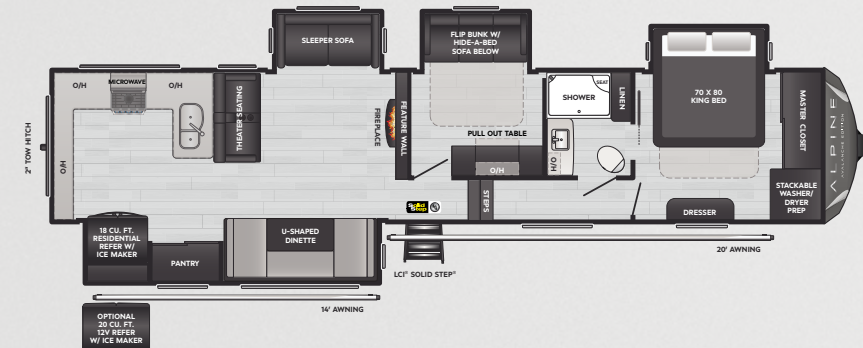
346FL | WEIGHT 12930 | LENGTH 38' 11"



366LS | WEIGHT TBD | LENGTH 40' 10"



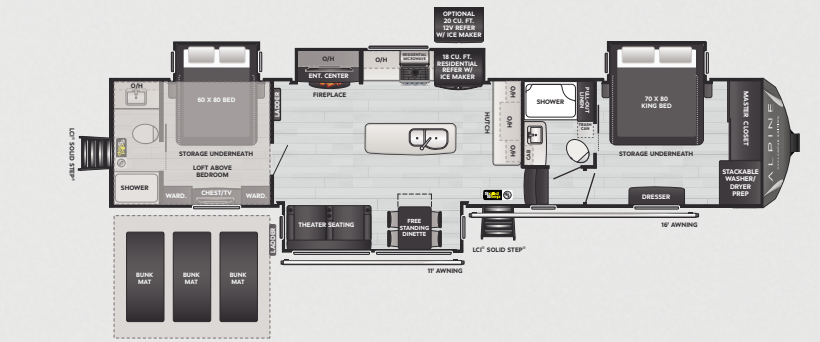
378BH | WEIGHT 13865 | LENGTH 40' 7"



379MB | WEIGHT TBD | LENGTH 41' 11"



380LT | WEIGHT 14445 | LENGTH 42' 4"



390DS | WEIGHT 14258 | LENGTH 42' 11"

DISCLAIMER: Product information is as accurate as possible as of the date of this publication. All features, floor plans, and specifications are subject to change without notice. Pre-production estimated weights & lengths may be listed; visit Keystonerv.com for the most current product information and specifications.

CAMP BETTER
KINDNESS · COMMUNITY · PLANET





KEYSTONE
RV COMPANY

ALPINE

AVALANCHE EDITION

2025 | FIFTH WHEELS

STANDARD FEATURES & OPTIONS

INTERIOR

- » 100" Wide Body Construction
- » Dramatic High Ceilings w/ 6'10" Tall Summit Slides
- » Norco G 5.5 Slideout Mechanism
- » Flush Floor Kitchen Slides
- » Exclusive Four-Season RV Polar Pack™ Climate Protection
- » Dual Coleman®-Mach® Quiet Series Power Saver™ 15K BTU Air Conditioners
- » Blade Pure™ High-Performance Air Flow System w/ MERV 9 Air Filtration
- » Suburban 35K BTU Gas Furnace
- » Attic Vents in All Models
- » 75-Gallon Fresh Water Tank
- » Girard® On-Demand Tankless Water Heater
- » Atwood and Easton Decor Options (See Keystonerv.com For Details)
- » Solid Surface Countertops
- » Furrion® Kitchen Appliances
- » Furrion 19.6 cu. Ft. 12v Refrigerator or 18 cu. ft. Residential Refrigerator - Both Models come with an Ice Maker
- » Stackable Washer & Dryer Prep
- » 48" or 42" Fiberglass Shower w/ Seat
- » King Sized Beds
- » JBL Sound System w/ MyZone®

OPTIONS

- » Optional Super Sofa (Select Floorplans)
- » Slide Awning Package
- » 12V Cooling Drawer
- » Generator Prep
- » 15K 3rd A/C
- » SolarFlex™ Discover 440i Package
- » Optional Dragonfly® Energy Lithium-Ion Batteries

EXTERIOR

- » Lippert Titan™ Hydraulic Auto-Leveling System w/ Digital Touchscreen & Under Frame LED Lighting
- » Hitch Vision™ Technology in Fully Painted, Molded Front Cap
- » Road Armor™ Suspension w/ 1/2" Shackle Plates
- » Road Armor™ Rubberized Hitch Pin
- » Saliun G-Rated Tires
- » 2" Hitch Receiver w/ 4-Pin Towing Harness (SELECT MODELS)
- » Backup Camera and Side Mount Camera Prep
- » Strut Assisted Solid Step®
- » SolarFlex™ Protect 220



DISCLAIMER: Product information is as accurate as possible as of the date of this publication. All features, floor plans, and specifications are subject to change without notice. Pre-production estimated weights & lengths may be listed; visit Keystonerv.com for the most current product information and specifications.

CAMP BETTER
KINDNESS · COMMUNITY · PLANET

