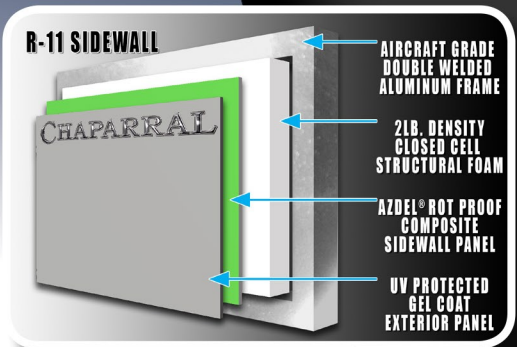


CHAPARRAL

EXPLORE
THE DIFFERENCE
WWW.COACHMENRV.COM



CHAPARRAL



AZDEL®
ROT PROOF, COMPOSITE
SIDEWALL PANELS ON BOARD!

WEATHER SHIELD+®
SUPERIOR PROTECTION
FROM THE ELEMENTS





EXPLORE THE CHAPARRAL DIF



EXTERIOR MARINE GRADE SPEAKERS



AMAZING OUTSIDE KITCHENS*



FULLY PROTECTIVE BUMPER!

2" ACCESSORY RECEIVER PREP



SOLID STEP® (3 STEP LITES, 4 STEP MIDS)

CHAPARRAL



HEAT, MASSAGE, & LED MOOD LIGHTING*



STORAGE BUILT IN!

LARGE TABLE & CHAIRS WITH LEAF*



HUGE 78" TRI-FOLD SOFA*

XL FULLY FUNCTIONAL WINDOWS



BEST-IN-CLASS KITCHEN STORAGE



FULL WASHER & DRYER PREP (MIDS)

KING & QUEEN BED SUITES AVAIL.*



STAINLESS STEEL APPLIANCES

REFERENCE!

CHAPARRAL

X-LITE, LITE, & MID-PROFILE MODELS & SPECS



ALL NEW 274X-LITE IN CHARCOAL DECOR

NEW!



274X

NEW!



284X

X-LITE 60X80 QUEEN BEDROOM SUITE



X-LITE	274X	284X
Carrying Capacity**	2,338	TBD
UVW*	8,662	TBD
GVWR	11,000	11,500
Hitch Weight	1,456	TBD
Exterior Height (w/ Std. A/C)	11' 10"	11' 10"
Fresh Water Capacity (gal.)	40	40
Grey Water Capacity (gal.)	66	66
Waste Water Capacity (gal.)	33	33
Wheel Size (Opt. 16")	15"	15"
Exterior Length	35' 4"	33' 7"

X-LITE STANDARDS

- TURN-TEC™ ENGINEERING - #1 IN TURNING RADIUS BY A SHORT BED TRUCK
- LAMINATED & ALUMINUM FRAMED FLOOR & SIDEWALLS WITH AZDEL®
- WEATHER SHIELD® 0° COLD TESTED & 110° HOT TESTED IN EXTREME TEMPERATURE CHAMBER
- 2ND AIR CONDITIONER PREP (FULLY DUCTED)
- 50 AMP SERVICE WITH DETACHABLE CORD
- 12 VOLT BATTERY DISCONNECT SWITCH
- SOLAR PANEL PREP
- EXTERIOR BACK-UP CAMERA PREP
- ELECTRIC AWNING WITH LED LIGHT STRIP
- RESIDENTIAL 60" X 80" PILLOW TOP MATTRESS
- ALUMINUM ENTRY STEPS
- WINEGARD® ANTENNA WITH WIFI PREP
- SATELLITE & CABLE TV HOOK-UP
- AM/FM/CD/DVD PLAYER WITH BLUETOOTH
- EXTERIOR SPEAKERS W/LED LIGHT
- 15" RADIAL TIRES W/ALUMINUM RIMS
- SPARE TIRE
- ROAD ARMOR® SUSPENSION
- 5100# DEXTER E-Z LUBE® AXLES

X PACKAGE

- 50-55" HD LED TELEVISION-LIVING ROOM
- EXTERIOR TV HOOK-UP
- STAINLESS STEEL APPLIANCES
- 15,000 BTU DUCTED AIR CONDITIONING
- X-LITE GRAPHICS WITH PAINTED CAP
- ELECTRIC FIREPLACE
- ACCESSORY RECEIVER PREP
- ROLLER NIGHT SHADES

X-LITE OPTIONS

- 2ND 13.5 A/C IN FRONT BEDROOM
- 10 CU. FT. 12V REFER IPO 8 CU. FT. REFER
- 12 CU. FT. REFER IPO 8 CU. FT. REFER (274X ONLY)
- 14.7 CU. FT. REFER IPO 8 CU. FT. (274X ONLY)
- 2" ACCESSORY RECEIVER HITCH
- 4-POINT ELECTRIC AUTO-LEVELING SYSTEM
- FREE STANDING TABLE & 4 CHAIRS
- 16" ALUMINUM WHEELS
- 50" TV IN OUTDOOR KITCHEN (284X ONLY)



CHAPARRAL

X-LITE, LITE, & MID-PROFILE STANDARDS, OPTIONS, & PACKAGES

LITE PACKAGE

- TURN-TEC™ ENGINEERING - #1 IN TURNING RADIUS BY A SHORT BED TRUCK
- LAMINATED & ALUMINUM FRAMED FLOOR & SIDEWALLS WITH AZDEL®
- WEATHER SHIELD® 0° COLD TESTED & 110° HOT TESTED IN EXTREME TEMPERATURE CHAMBER
- 13,500 BTU DUCTED AIR CONDITIONING
- 2ND AIR CONDITIONER PREP (FULLY DUCTED)
- 50 AMP SERVICE WITH DETACHABLE CORD
- 12 VOLT BATTERY DISCONNECT SWITCH
- SOLAR PANEL PREP
- EXTERIOR BACK-UP CAMERA PREP
- ELECTRIC AWNING WITH LED LIGHT STRIP
- 8 CU. FT. REFRIGERATOR
- RESIDENTIAL 60" X 80" PILLOW TOP MATTRESS
- ALUMINUM ENTRY STEPS
- ELECTRIC FRONT JACKS
- ELECTRIC REAR STABILIZER JACKS
- WINEGARD® ANTENNA WITH WIFI PREP
- SATELLITE & CABLE TV HOOK-UP
- EXTERIOR TV HOOK-UP
- AM/FM/CD/DVD PLAYER WITH BLUETOOTH
- EXTERIOR SPEAKERS WITH LED LIGHT
- 15" RADIAL TIRES WITH ALUMINUM RIMS
- SPARE TIRE
- ROAD ARMOR® SUSPENSION
- 5100# DEXTER E-Z LUBE® AXLES
- ACCESSORY RECEIVER PREP
- ROLLER NIGHT SHADES

LITE EXTERIOR OPTIONS

- 16" ALUMINUM WHEELS
- 15,000 BTU A/C IPO 13,500 BTU A/C
- 2ND 13.5 A/C IN FRONT BEDROOM
- DUAL PANE WINDOWS
- ELECTRONIC HEATED HOLDING TANKS
- 4-POINT ELECTRIC AUTO-LEVELING SYSTEM
- 2" ACCESSORY RECEIVER HITCH

LITE INTERIOR OPTIONS

- 10 CU. FT. 12V REFER IPO 8 CU. FT. REFER
- 12 CU. FT. REFER IPO 8 CU. FT. REFER (274BH ONLY)
- 14.7 CU. FT. REFER IPO 8 CU. FT. (274BH ONLY)
- 50" LED TELEVISION
- 55" LED TELEVISION (284RL ONLY)
- 50" TV IN OUTDOOR KITCHEN (284RL ONLY)
- FREE STANDING TABLE & 4 CHAIRS
- ELECTRIC FIREPLACE
- SOLID SURFACE COUNTERTOPS
- COMFORT AIR® FAN (KITCHEN ONLY)
- TRI-FOLD SOFA IPO THEATER SEATING (25RE)

MID-PROFILE PACKAGE

- LAMINATED & ALUMINUM FRAMED FLOOR & SIDEWALLS WITH AZDEL®
- WEATHER SHIELD® 0° COLD TESTED & 110° HOT TESTED IN EXTREME TEMP. CHAMBER
- 15,000 BTU DUCTED AIR CONDITIONING
- 2ND AIR CONDITIONER PREP (FULLY DUCTED)
- 50 AMP SERVICE WITH DETACHABLE CORD
- 12 VOLT BATTERY DISCONNECT SWITCH
- SOLAR PANEL PREP
- EXTERIOR BACK-UP CAMERA PREP
- ELECTRIC AWNING WITH LED LIGHT STRIP
- 10 GALLON GAS/ELECTRIC WATER HEATER
- WASHER/DRYER PREP
- WATER FILTRATION PREP
- 8 CU. FT. REFRIGERATOR
- RESIDENTIAL 60" X 80" MATTRESS
- CEILING FAN IN LIVING ROOM (N/A 373M BRB, 367BH)
- 30" RESIDENTIAL MICROWAVE
- ALUMINUM ENTRY STEPS
- ELECTRIC FRONT JACKS
- ELECTRIC REAR STABILIZER JACKS
- WINEGARD® ANTENNA WITH WIFI PREP
- SATELLITE & CABLE TV HOOK-UP
- EXTERIOR TV HOOK-UP WITH BRACKET
- AM/FM/CD/DVD PLAYER WITH BLUETOOTH
- EXTERIOR SPEAKERS WITH LED LIGHT
- 16" RADIAL TIRES WITH ALUMINUM RIMS
- SPARE TIRE
- ROAD ARMOR® SUSPENSION
- DEXTER E-Z LUBE® AXLES
- ACCESSORY RECEIVER PREP
- ROLLER NIGHT SHADES

MID-PROFILE EXTERIOR OPTIONS

- 2ND 13.5 A/C IN FRONT BEDROOM
- DUAL PANE WINDOWS
- 4-PT ELECTRIC AUTO-LEVELING (27RKS, 298RLS)
- 6-PT ELECTRIC AUTO-LEVELING (336TSIK & LARGER)
- ELECTRONIC HEATED HOLDING TANKS
- 2" ACCESSORY RECEIVER HITCH (N/A 360IBL)
- JT STRONG ARMS

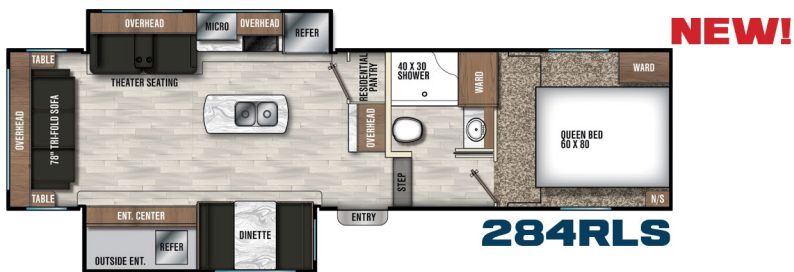
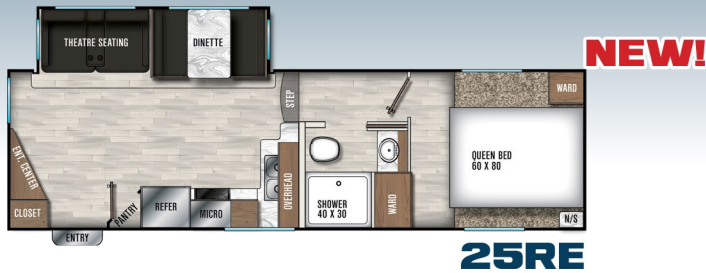
MID-PROFILE INTERIOR OPTIONS

- 50" LED TV (27RKS, 336TSIK, 360IBL, 367BH, 370FL, & 381RD ONLY)
- 55" LED TV (298RLS, 373M BRB, & 392MBL ONLY)
- 50" TV IN OUTDOOR KITCHEN (298RLS, 373M BRB, & 392MBL ONLY)
- BOOTH DINETTE IPO FREESTANDING (N/A 370FL, 381RD)
- ELECTRIC FIREPLACE
- SOLID SURFACE C-TOPS WITH GLASS STOVE COVER (STD. 370FL)
- KING BED IPO STD. QUEEN (N/A 27RKS, 298RLS, 360IBL, & 373M BRB)
- COMFORT AIR® FAN (KITCHEN ONLY)
- 10 CU. FT. 12V REFER IPO 8 CU. FT. REFER
- 12 CU. FT. REFER IPO 8 CU. FT. REFER (N/A 360IBL)
- 14.7 CU. FT. REFER IPO 8 CU. FT. (N/A 360IBL)

CHAPARRAL

X-LITE, LITE, & MID-PROFILE MODELS & SPECS

REVISED

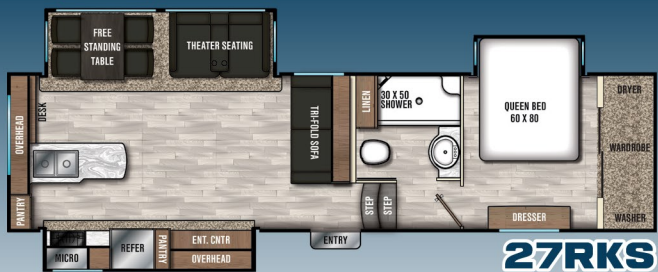


SCAN HERE FOR ADDITIONAL PHOTOS, 360 VIRTUAL TOURS, VIDEOS, EXTENDED LITERATURE DOWNLOADS, A COMPLETE LIST OF STANDARDS, OPTIONS AND MORE!

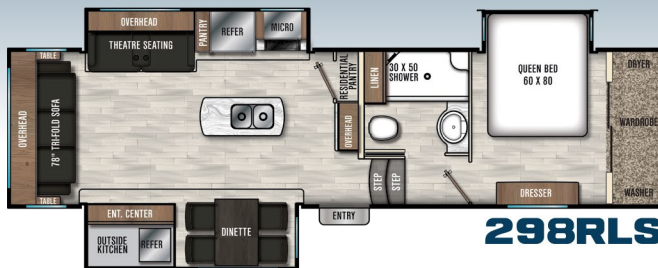


CHAPARRAL LITE	25RE	274BH	284RLS	30RLS	30BHS
Carrying Capacity**	2,527	2,308	2,592	2,019	1,965
UVW*	7,273	8,692	8,908	8,981	9,535
GVWR	9,800	11,000	11,500	11,000	11,500
Hitch Weight	1,115	1,420	1,434	1,445	1,553
Exterior Height (w/ Std. A/C)	11' 10"	11' 10"	11' 10"	11' 10"	11' 10"
Fresh Water Capacity (gal.)	40	40	40	40	40
Grey Water Capacity (gal.)	33	66	66	66	66
Waste Water Capacity (gal.)	33	33	33	33	33
Wheel Size (Opt. 16")	15"	15"	15"	15"	15"
Exterior Length	29' 3"	35' 4"	33' 7"	33' 7"	36' 5"

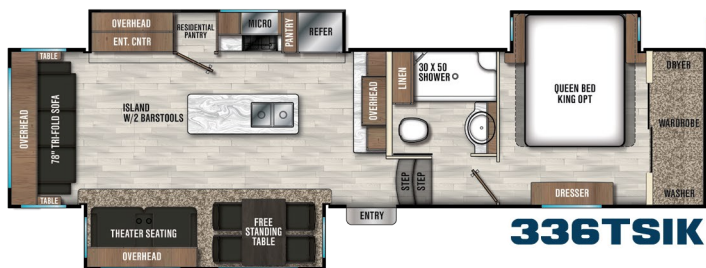
NEW!



27RKS



298RLS



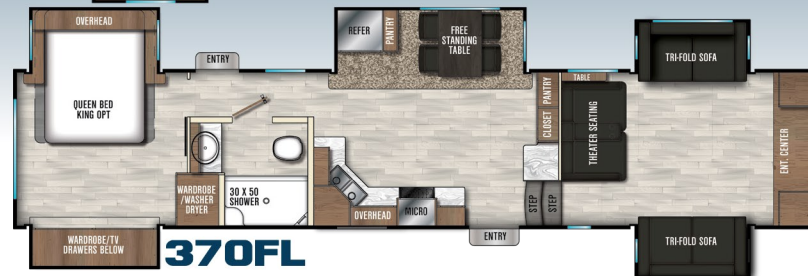
336TSIK



360IBL



367BH



370FL



373MBRB



381RD

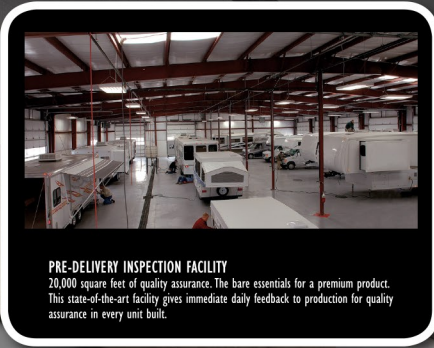


392MBL

REVISED

CHAPARRAL MID-PROFILE	27RKS	298RLS	336TSIK	360IBL	367BH	370FL	373MBRB	381RD	392MBL
Carrying Capacity**	2,197	2,425	1,480	2,550	3,172	2,637	1,969	2,254	1,805
UVW*	9,803	9,575	10,520	11,450	12,328	11,863	13,031	12,246	12,695
GVWR	12,000	12,000	12,000	14,000	15,500	14,500	15,000	14,500	14,500
Hitch Weight	1,953	1,935	1,880	2,100	2,194	2,211	2,219	2,310	2,287
Exterior Height (w/ Std. A/C)	12' 4"	12' 4"	12' 4"	12' 4"	12' 5"	12' 9"	12' 6"	12' 6"	12' 6"
Fresh Water Capacity (gal.)	48	48	48	48	48	48	48	48	48
Grey Water Capacity (gal.)	90	90	90	90	112	90	120	90	85
Waste Water Capacity (gal.)	45	45	45	45	72	45	75	45	45
Wheel Size	16"	16"	16"	16"	16"	16"	16"	16"	16"
Exterior Length	33' 6"	33' 10"	36' 3"	39'	41' 9"	41' 9"	41' 9"	41' 9"	41' 9"

(WATER HEATER CAPACITY IS NOT FACTORED IN FRESH WATER CAPACITY SPECS)



PRE-DELIVERY INSPECTION FACILITY
20,000 square feet of quality assurance. The bare essentials for a premium product. This state-of-the-art facility gives immediate daily feedback to production for quality assurance in every unit built.



WARM CHESTNUT DECOR



DRIFTWOOD TAUPE DECOR

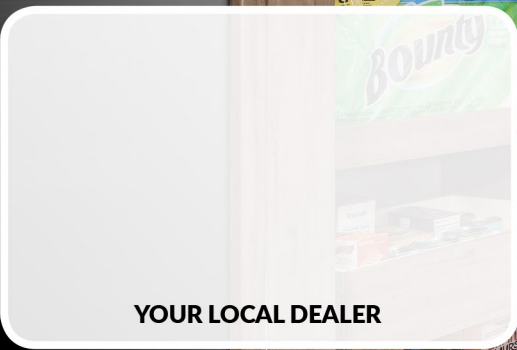


NEW 30RLS (ADDED BARSTOOLS!)

ALL INFORMATION CONTAINED IN THIS BROCHURE IS BELIEVED TO BE ACCURATE AT THE TIME OF PUBLICATION. HOWEVER, DURING THE MODEL YEAR IT MAY BE NECESSARY TO MAKE REVISIONS. FOREST RIVER, INC., RESERVES THE RIGHT TO MAKE ALL SUCH CHANGES WITHOUT NOTICE, INCLUDING PRICES, COLORS, MATERIALS, EQUIPMENT, AND SPECIFICATIONS, AS WELL AS THE ADDITION OF NEW MODELS AND THE DISCONTINUANCE OF MODELS SHOWN IN THIS BROCHURE. THEREFORE, PLEASE CONSULT WITH YOUR FOREST RIVER DEALER AND CONFIRM THE EXISTENCE OF ANY MATERIALS, DESIGN, OR SPECIFICATIONS THAT ARE MATERIAL TO YOUR PURCHASE DECISION. * = WHERE APPLICABLE.



FREE MEMBERSHIP
www.coachmenowners.com



YOUR LOCAL DEALER

CHAPARRAL

381RD SHOWN W/ OPT. 14.7 CU. FT. RESIDENTIAL FRIDGE

GVWR (GROSS VEHICLE WEIGHT RATING) - IS THE MAXIMUM PERMISSIBLE WEIGHT OF THE UNIT WHEN FULLY LOADED. IT INCLUDES ALL WEIGHTS, INCLUSIVE OF ALL FLUIDS, CARGO, OPTIONAL EQUIPMENT AND ACCESSORIES. FOR SAFETY AND PRODUCT PERFORMANCE DO NOT EXCEED THE GVWR.

GAWR (GROSS AXLE WEIGHT RATING) - IS THE MAXIMUM PERMISSIBLE WEIGHT, INCLUDING CARGO, FLUIDS, OPTIONAL EQUIPMENT, AND ACCESSORIES THAT CAN BE SAFELY SUPPORTED BY A COMBINATION OF ALL AXLES.

UVW (UNLOADED VEHICLE WEIGHT)* - IS THE TYPICAL WEIGHT OF THE UNIT AS MANUFACTURED AT THE FACTORY. IT INCLUDES ALL WEIGHT AT THE UNIT'S AXLE(S) AND TONGUE OR PIN AND LP GAS. THE UVW DOES NOT INCLUDE CARGO, FRESH POTABLE WATER, ADDITIONAL OPTIONAL EQUIPMENT OR DEALER INSTALLED ACCESSORIES. *ESTIMATED AVERAGE BASED ON STANDARD BUILD OPTIONAL EQUIPMENT.

CCC (CARGO CARRYING CAPACITY)** - IS THE AMOUNT OF WEIGHT AVAILABLE FOR FRESH POTABLE WATER, CARGO, ADDITIONAL OPTIONAL EQUIPMENT AND ACCESSORIES. CCC IS EQUAL TO GVWR MINUS UVW. AVAILABLE CCC SHOULD ACCOMMODATE FRESH POTABLE WATER (8.3 LBS PER GALLON). BEFORE FILLING THE FRESH WATER TANK, EMPTY THE BLACK AND GRAY TANKS TO PROVIDE FOR MORE CARGO CAPACITY.

** ESTIMATED AVERAGE BASED ON STANDARD BUILD OPTIONAL EQUIPMENT. EACH FOREST RIVER RV IS WEIGHED AT THE MANUFACTURING FACILITY PRIOR TO SHIPPING. A LABEL IDENTIFYING THE UNLOADED VEHICLE WEIGHT OF THE ACTUAL UNIT AND THE CARGO CARRYING CAPACITY IS APPLIED TO EVERY FOREST RIVER RV PRIOR TO LEAVING OUR FACILITIES.

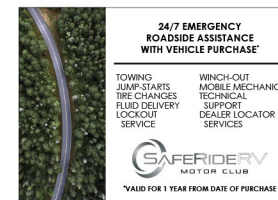
THE LOAD CAPACITY OF YOUR UNIT IS DESIGNATED BY WEIGHT, NOT BY VOLUME, SO YOU CANNOT NECESSARILY USE ALL AVAILABLE SPACE WHEN LOADING YOUR UNIT.



www.ForestRiverBuyLocal.com



REV. DATE 10/31, BASED ON MODELS BUILT AFTER 12/1/19



Learn More
Scan this barcode using a QR Reader on your smart phone to learn more about Forest River.



A Berkshire Hathaway company.

© 2019/2020 CHAPARRAL - A DIVISION OF FOREST RIVER, INC., A BERKSHIRE HATHAWAY COMPANY. ALL RIGHTS RESERVED. SOME ITEMS SHOWN ARE OPTIONAL OR FOR DEMONSTRATIVE PURPOSES ONLY.