

WARRANTY FOR
FULL TIME RVING*

*REFERENCE KEYSTONE RV COMPANY OWNERS MANUAL FOR LIMITED WARRANTY DETAILS

LUXURY FIFTH WHEELS

keystonerv.com/alpine

ALPINE



The ultimate
ownership experience.

The ultimate ownership experience.

The goal of Keystone RV Company is to surprise and delight our owners at each and every touchpoint. We're happy when our campers are happy, and we are committed to providing the very best ownership experience in the industry.



**Keystone RV
Company**

1 EASIER SHOPPING.

At Keystone, we make choosing an RV as easy as finding the Big Dipper on a dark summer night. With comprehensive online product information, Key Connect™ product advisors, and an unparalleled dealer network, we will help you select the perfect RV for your family's adventure.

2 INNOVATIVE THINKING.

The road's a nicer place when you have the industry's smartest features behind you. Keystone leads the pack in patented innovations that make our RVs safer, more comfortable, and easier to operate.

3 LONG HAUL QUALITY.

To keep you on the road, there are certain things we just won't build a Keystone RV without. Game-changing features like our Unified Wiring Standard, Tru-Fit™ five-point slide construction, and no-fail Tuf-Lok™ A/C duct joiners combined with exhaustive testing and inspections are some of the reasons why Keystone is able to offer our owners the industry's best 3-year limited structural warranty.

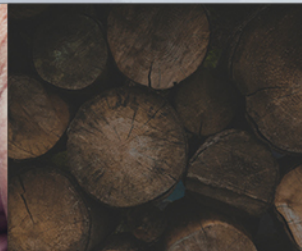
4 WORRY-FREE CUSTOMER SERVICE.

Wherever the road takes you, you're never too far from an authorized Keystone service center. We also offer live service assistance, ultra-fast parts shipping, online maintenance tips and tricks, and a single-point warranty claims policy. *That's* peace of mind.

5 KEYSTONE NATION.

When you choose Keystone, you become a part of one of the largest camping families in the country. We're Keystone Nation. A friendly community where people share photos, travel tips and amazing stories – all in the spirit of camaraderie and adventure. Come join us.

Experience the Alpine lifestyle by visiting [#keystonealpine](#)



ALPINE



LUXURY FIFTH WHEELS

Where luxury isn't an option, it's standard.

Alpine, Keystone's premier luxury fifth wheel brand, is designed for a new generation of discriminating campers who desire luxury as a standard feature for life. Designed like no other RV in its class, Alpine builds luxury in from the start — no add-ons necessary. Alpine delivers contemporary styling, innovative floorplans and rich amenities. Alpine has a residential feel with high-ceilings — including nearly 7' tall slide-boxes, wider bodies, and panoramic windows. Always ahead of the curve, Alpine truly takes luxury to new levels by now offering on-demand hot water standard in all floorplans.

Keystone EXCLUSIVE Innovations

Year after year, Keystone RV's experienced team delivers Built For the Long Haul quality you expect and exclusive innovations you won't find anywhere else.



**3-year Limited Structural Warranty,
1-year Limited Base Warranty**

Every new Keystone RV comes with the industry's best three-year limited structural warranty AND a one-year limited base warranty. Ask your dealer, visit keystonerv.com, or call Keystone Owner Relations for details.



4G LTE and Wi-Fi Prep

All Alpines are equipped with a new antenna that integrates 4G LTE and Wi-Fi with standard VHF/UHF/AM/FM reception.



KeyTV™

No more connection guesswork or poor reception. KeyTV offers a game-changing, single point of control of over-the-air, cable, and satellite feeds. Visit us online for more information.



Color-Coded Wiring Standard

Easy-to-trace circuits simplify electrical and entertainment system troubleshooting.



Hitch Vision™

Simplifies hitch hook-up with "no looking back" convenience.



In-floor Heating Ducts

Distributes heat evenly for greater comfort.



Road Armor™ Suspension

Equalizes axle load to dampen shock and vibration.



Tru-Fit™ Slide Construction

A more durable slide room design that minimizes functional motor and structural stress, resists leaking.

Premium Features

Cutting-edge technology and amenities that make RV operation easier than ever.



Furrion® Chef Collection

Stainless steel three-burner cook top, oven w/enhanced safety features, and 1.5 cu ft convection microwave.



Polar Pack All Season Protection

Exclusive all season Polar Pack protection allows you to camp in nearly any condition.



IN-Command® Gen 3 w/Global Connect

Total control over HVAC, awnings, lighting and monitoring system from your smartphone.



Dual Quiet Cool Air Conditioners

High-pressure 15,000 BTU units with Whisper Quiet Technology, with electric pump.



One Touch 6-Point Hydraulic Level Up System

Automated level system control panel for quick and easy setup.



On Demand Water Heater

Instant and endless hot water at the turn of a handle. Shower like you are in your home.



Hardwood Cabinets and Stiles

Alpine cabinetry features solid wood construction for doors and stiles, resulting in sturdier and more durable residential style construction.



Backup and Side Camera Prep

Includes left and right side camera prep, plus rear camera prep. Rear wall is double insulated and laminated.

Premium Entertainment

Outfitted with 50" flat panel televisions, DVD players, and high definition stereo speakers, fireplaces and convenient storage cubicles.

Modern Styling



more product detail at
www.keystonerv.com/alpine



Quite Stylish

Alpine's contemporary design is the result of years of feedback from our owners. Every feature is strategically placed for practicality and to maximize space for full-time RVing. Our goal was to create a beautiful yet cozy feel throughout the coach — we accomplished this by refreshing the exterior with sleek, eye-catching graphics and paint scheme. We fine-tuned the luxury of Alpine by adding beautiful satin nickel lighting with modern Edison bulbs, streamlined valances with wood accents, and added the new legless dinette for more storage and convenient comfort.



Room to Breathe

Spacious master suite offers comfort and privacy for a cozy night in.



Well-Designed Storage

Thoughtful interior and exterior storage allows you to pack what you need for extended-stay camping.





more product detail at
www.keystonerv.com/Alpine

Alpine | FULL-PROFILE FIFTH WHEELS

- Stunning solid-wood cabinet doors, drawer fronts, cabinet framing and slide fascia
- Furrion® Chef Collection kitchen appliances
- EXCLUSIVE KeyTV™ Keystone's revolutionary single-source, easy-to-use controller for over-the-air, cable and satellite television
- 40" fireplace that produces 5,000 BTU of electric heat
- Theater seats with heat, massage functions and USB charging ports
- Cordless MCD® Innovations day/night roller shades provide superior insulation, clear views, privacy during the day, and nighttime blackout coverage
- Stackable washer and dryer prepped for easy install and use
- NEW iN-Command® Generation 3 w/ Global Connect control system gives owners total control over power, slide-rooms, awnings, HVAC and more, from a convenient master control panel as well as a Wi-Fi-enabled smart-phone application
- Summit slide-rooms with 6' 10" interior height
- Two panoramic 5' x 4' slide box windows
- Spacious 100" wide-body construction
- Strut-assisted Solid Step® by Lippert Components
- One 16,500 BTU electric heat pump standard (in rear air conditioner)
- Two, high-pressure 15,000 BTU air conditioners with Whisper Quiet Technology, standard
- EXCLUSIVE all season Polar Pack protection allows you to camp in nearly any condition. Rated and tested to perform in all seasons.
- 200 cu. ft. heated basement storage with tie-downs
- 2" accessory hitch with 300 lb carrying capacity
- Six-point hydraulic auto-leveling system
- EXCLUSIVE Road Armor™ suspension equalizes axle load to dampen shock and vibration
- Electric power cord reel
- Suburban® Nautilus on-demand water heater for instant and endless hot water



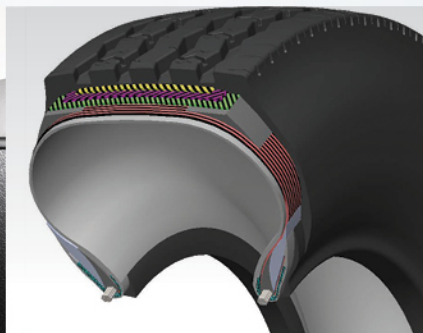
Strut Assisted Solid Step® by Lippert Components

Safe and secure with an extra-wide top step and patent-pending "Lift & Level" technology. Folds easily to stow inside entry door.



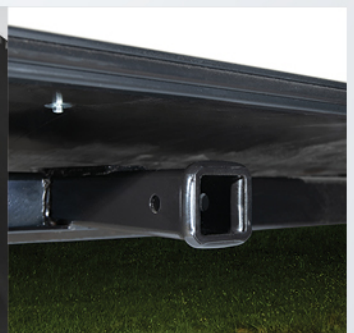
Easy-Access Water Works Center

Fully enclosed and heated, provides quick and easy access to all your utility hook-ups.



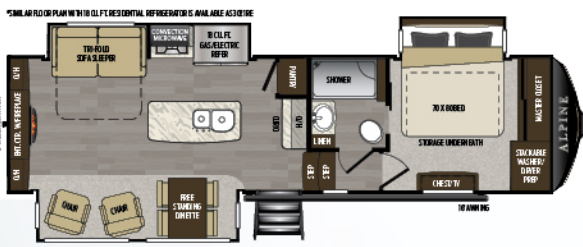
Heavy Duty G-rated Tires

Upgraded, higher-ply tires for maximum towing security and confidence. 6-year limited warranty w/2-year road side assistance.



2" Accessory Receiver Hitch

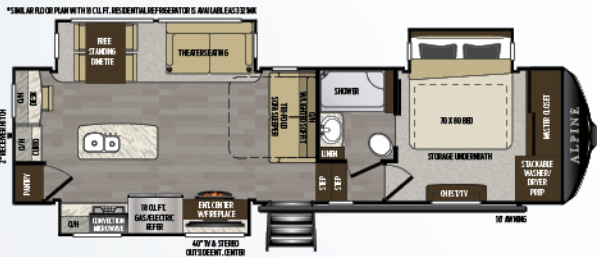
Every Alpine comes standard with a 300 lb carrying capacity receiver hitch. Perfect for use with any accessory approved for RV use. Check accessory owner's manual.



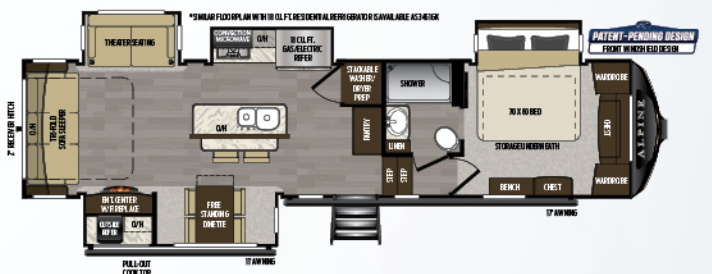
3020RE/3021RE | Rear entertainment, three slides, king bed
Weight: 11702 LBS | Length: 34' 2"



3120RS/3121RS | Rear living, three slides, windshield
Weight: 11960 LBS | Length: 34' 11"



3320MK/3321MK | Mid-kitchen, three slides, desk
Weight: 11783 LBS | Length: 34' 6"



3450GK/3451GK | Rear living room, breakfast bar, windshield
Weight: 12815 LBS | Length: 37' 5"



3650RL/3651RL | Rear living room, front windshield, range hood
Weight: 12737 LBS | Length: 39'



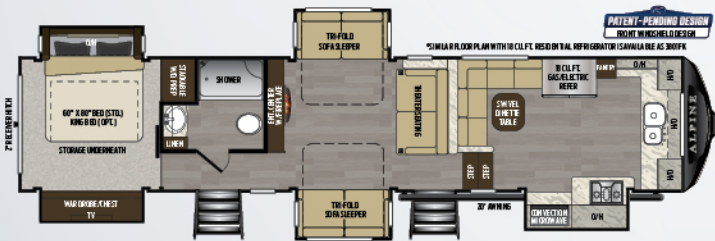
3700FL/3701FL | 1-1/2 bath, front living room, master suite, windshield
Weight: 13793 LBS | Length: 41' 6"



3710KP/3711KP | Front living, walk-in pantry, front living, windshield
Weight: 13884 LBS | Length: 41' 6"



3712KB/3713KB | Front living, walk-in pantry and shower, front living
Weight: 13875 LBS | Length: 41' 6"



3800FK/3801FK | Front kitchen, five slides, front windshield
Weight: 13414 LBS | Length: 41' 6"



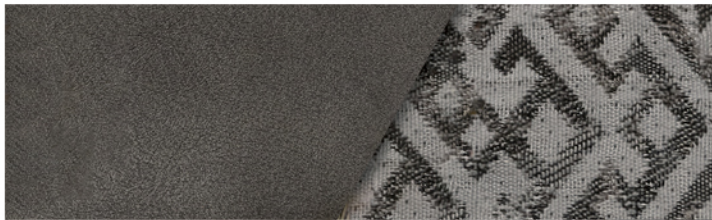
3850RD/3851RD | Rear den, five slides, oversized storage tray
Weight: 13988 LBS | Length: 41' 5"

FULL-PROFILE FIFTH WHEELS

| MODEL | WEIGHT | CARRYING CAPACITY | HITCH WEIGHT | FRESH WATER | WASTE WATER | GRAY WATER | LPG | LENGTH* | WIDTH | HEIGHT | AWNING |
|--------|--------|-------------------|--------------|-------------|-------------|------------|-----|---------|-------|--------|---------|
| 3020RE | 11702 | 3298 | 2405 | 66 | 49 | 83 | 60 | 34' 2" | 8' 4" | 13' 4" | 16' |
| 3021RE | 11700 | 3300 | 2455 | 66 | 49 | 83 | 60 | 34' 2" | 8' 4" | 13' 4" | 16' |
| 3120RE | 11702 | 3298 | 2405 | 66 | 49 | 83 | 60 | 34' 2" | 8' 4" | 13' 4" | 16' |
| 3121RE | 11700 | 3300 | 2455 | 66 | 49 | 83 | 60 | 34' 2" | 8' 4" | 13' 4" | 16' |
| 3320MK | 11783 | 3217 | 2470 | 66 | 49 | 83 | 60 | 34' 3" | 8' 4" | 13' 4" | 16' |
| 3321MK | 11754 | 3246 | 2470 | 66 | 49 | 83 | 60 | 34' 3" | 8' 4" | 13' 4" | 16' |
| 3450GK | 12086 | 2914 | 2445 | 66 | 49 | 83 | 60 | 36' 4" | 8' 4" | 13' 4" | 16' |
| 3451GK | 12086 | 2914 | 2445 | 66 | 49 | 83 | 60 | 36' 4" | 8' 4" | 13' 4" | 16' |
| 3650RL | 12737 | 2763 | 2675 | 66 | 44 | 78 | 60 | 39' 4" | 8' 4" | 13' 4" | 19'/11' |
| 3651RL | 12755 | 2745 | 2695 | 66 | 44 | 78 | 60 | 39' 4" | 8' 4" | 13' 4" | 19'/11' |
| 3700FL | 13793 | 2707 | 2775 | 66 | 78 | 78 | 60 | 41' 5" | 8' 4" | 13' 4" | 14'/14' |
| 3701FL | 13755 | 2745 | 2930 | 66 | 78 | 78 | 60 | 41' 5" | 8' 4" | 13' 4" | 14'/14' |
| 3712KB | 13875 | 2625 | 2800 | 54 | 44 | 78 | 60 | 41' 6" | 8' 4" | 13' 4" | 14'/14' |
| 3713KB | 13690 | 2810 | 2750 | 54 | 44 | 78 | 60 | 41' 6" | 8' 4" | 13' 4" | 14'/14' |
| 3800FK | 13414 | 3086 | 2740 | 66 | 44 | 78 | 60 | 41' 5" | 8' 4" | 13' 4" | 20' |
| 3801FK | 13427 | 3073 | 2735 | 66 | 44 | 78 | 60 | 41' 5" | 8' 4" | 13' 4" | 20' |
| 3850RD | 13872 | 2628 | 2745 | 66 | 49 | 83 | 60 | 41' 4" | 8' 4" | 13' 4" | 17' |
| 3851RD | 13988 | 2512 | 2745 | 66 | 49 | 83 | 60 | 41' 4" | 8' 4" | 13' 4" | 17' |

DISCLAIMER: Product information is as accurate as possible as of the date of publication of this brochure. All features, floor plans, and specifications in this brochure are subject to change without notice. Please also consult Keystone's web site at www.keystonerv.com for more current product information and specifications. **Tow Vehicle Disclaimer.** CAUTION: Owners of Keystone recreational vehicles are solely responsible for the selection and proper use of tow vehicles. All customers should consult with a motor vehicle manufacturer or their dealer concerning the purchase and use of suitable tow vehicles for Keystone products. Keystone disclaims any liability or damages suffered as a result of the selection, operation, use or misuse of a tow vehicle. **KEYSTONE'S LIMITED WARRANTY DOES NOT COVER DAMAGE TO THE RECREATIONAL VEHICLE OR THE TOW VEHICLE AS A RESULT OF THE SELECTION, OPERATION, USE OR MISUSE OF THE TOW VEHICLE.** *Length is defined as the distance from the centerline of hitch pin/coupler to rear bumper of trailer. Please review owner's manual prior to purchase for more information on service warranties, extended use, towing and maintenance. Owner's manuals can be found at keystonerv.com.

DÉCOR OPTIONS



STANTON



CLARIDGE

FULL BODY PAINT OPTIONS



1

MIDNIGHT MERLOT

2

ARCTIC SKY

3

MALIBU SAND

STANDARDS AND OPTIONS

EXTERIOR

Rear 2" accessory hitch w/ 300 lb. capacity
 Road Armor™ shock absorbing hitch pin
 Solar prep
 Rear observation and side camera prep
 6-rated tires
 Heavy duty 7,000 lb. Axles w/never-adjust brakes
 12" beams with z-frame technology
 "No sweat" vented attic system
 50 AMP service with electric power cord reel
 Hydraulic selector valves for slide-outs
 6-point hydraulic level up system
 Rear ladder w/fully walkable roof
 One-touch electric awning package with adjustable arms
 Tinted 80% frameless safety glass windows
 MaxTurn Technology™ high-gloss fiberglass front cap w/Hitch Vision™ backup mirror
 Class "A" style dual latch "slam" baggage doors
 Super-size 6' 4" tall, 30" wide entry door
 One-piece polypropylene underbelly
 Dual-pane windows (optional)
 5500 LP generator (optional)
 Generator prep (optional)
 Artic Sky full body paint (optional)
 Midnight Merlot full body paint (optional)
 Malibu Sand full body paint (optional)

ALL-IN-ONE WATER WORKS EXTERIOR UTILITY CENTER

KeyTV™ multisource TV control system
 Easy-siphon winterization system
 Water heater bypass
 Enclosed low point drain valves
 Ducted heat for cold weather protection
 Black tank spray hookup

SUSPENSION

Improved impact absorption
 Improved axle equalization
 Greasable wet bolts (8)
 Long-lasting 1/2" steel shackles plates
 Long-lasting bronze bushings

INTERIOR

Tri-fold sleeper sofa
 4 high-back dinette chairs
 Extra tall 6'10" main slide height
 MCD® day/night roller shades

INTERIOR (CONTINUED)

Ceiling fan
 Electric roof vent (kitchen)
 LP leak detector
 Translucent glass shower enclosure w/massaging shower head
 Shower skylight
 Porcelain toilet
 Single-level master bedroom suite
 70" x 80" pillow top king bed mattress (optional 3800FK, 3801FK)
 Cross ventilation bedroom windows (where available)
 Quilted bedspread and pillows
 Samsung residential refrigerator (mandatory on 3021RE, 3121RS, 3321MK, 3451GK, 3651RL, 3701FL, 3711KP, 3713KB, 3801FK, 3851RD)

PACKAGES

UPGRADED APPLIANCE

Furrion® RV Chef Collection kitchen
 30" convection oven/microwave
 On-demand water heater
 35,000 BTU furnace
 Central vacuum system
 DELUXE SOLID SURFACE
 Solid surface countertops
 Solid surface sink cover
 Stainless steel, extra deep sink with dual bowls
 High-rise, single-lever kitchen faucet with sprayer
 Maximized kitchen storage w/more drawers and pantry space

SUPER CINEMA

50" LED TV
 Furrion® sound system
 Outside speakers

NORTH FACE INSULATED

Triple insulated
 Heated basement
 Double insulated laminated rear wall
 Heat ducting to tanks w/12 volt heat pads
 Heated "water works" area

WHISPER AIR HVAC SYSTEMS

15,000 BTU air conditioner with cold air return vents (2)
 iN-Command® HVAC system control w/ Global Connect technology
 (1) 16,500 BTU heat pump
 Fully programmable dual zone temperature control

BUILT FOR THE LONG HAUL



PRINT 12.2019

