

Alpine

FULL-PROFILE FIFTH WHEELS

A BREATH OF

# FRESH AIR



FALL PREVIEW





# The ultimate ownership experience.

The goal of Keystone RV Company is to surprise and delight our owners at each and every touchpoint. We're happy when our campers are happy, and we are committed to providing the very best ownership experience in the industry.



**Keystone RV Company**

## 1 EASIER SHOPPING.

At Keystone, we make choosing an RV as easy as finding the Big Dipper on a dark summer night. With comprehensive online product information, Key Connect™ product advisors, and an unparalleled dealer network, we will help you select the perfect RV for your family's adventure.

## 2 INNOVATIVE THINKING.

The road's a nicer place when you have the industry's smartest features behind you. Keystone leads the pack in patented innovations that make our RVs safer, more comfortable, and easier to operate.

## 3 LONG HAUL QUALITY.

To keep you on the road, there are certain things we just won't build a Keystone RV without. Game-changing features like our Unified Wiring Standard, Tru-Fit™ five-point slide construction, and no-fail Tuf-Lok™ A/C duct joiners combined with exhaustive testing and inspections are some of the reasons why Keystone is able to offer our owners the industry's best 3-year limited structural warranty.

## 4 WORRY-FREE CUSTOMER SERVICE.

Wherever the road takes you, you're never too far from an authorized Keystone service center. We also offer live service assistance, ultra-fast parts shipping, online maintenance tips and tricks, and a single-point warranty claims policy. *That's* peace of mind.

## 5 KEYSTONE NATION.

When you choose Keystone, you become one of the largest camping families in the country. We're Keystone Nation. A friendly community where people share photos, travel tips and amazing stories – all in the spirit of camaraderie and adventure. Come join us.

Experience the Alpine lifestyle by visiting [#keystonealpine](#)



# ALPINE



FULL-PROFILE FIFTH WHEELS

## Full time camping with a new attitude.

Alpine, Keystone's premier luxury fifth wheel brand, is designed for a new generation of discriminating campers who are looking for contemporary styling, innovative floorplans and modern amenities. Designed like no other RV in its class, Alpine has a residential feel with high ceilings—including nearly 7' tall slide-boxes, wider bodies, and panoramic frameless windows. Always ahead of the curve, Alpine truly takes extended-stay camping to new heights.

For more information, please visit [keystonerv.com/alpine](http://keystonerv.com/alpine)





more product detail at  
[www.keystonerv.com/Alpine](http://www.keystonerv.com/Alpine)

## Alpine | FULL-PROFILE FIFTH WHEELS

- Stunning solid-wood cabinet doors, drawer fronts, styles and slide fascia
- Furrion® Chef Collection kitchen appliances
- EXCLUSIVE KeyTV™ Keystone's revolutionary single-source, easy-to-use controller for over-the-air, cable and satellite television
- 40" Furrion® fireplace with decorative surround
- Power theater seats with heat and massage functions
- Cordless MCD® Innovations day/night roller shades provide superior insulation, clear views, privacy during the day, and nighttime blackout coverage
- Stackable washer and dryer prepped for easy install and use
- NEW iN-Command® Generation 3 w/ Global Connect control system gives owners total control over power, slide-rooms, awnings, HVAC and more, from a convenient master control panel as well as a WiFi-enabled smart-phone application
- Summit slide-rooms with 6' 10" interior height
- Two panoramic 5' x 4' slide box windows
- Spacious 100" wide-body construction
- Strut-assisted Solid Step® by Lippert Components
- 16,500 BTU electric heat pump standard (in rear air conditioner)
- Two, high-pressure 15,000 BTU air conditioners with Whisper Quiet Technology, standard
- -14° rating with R-28 equivalent roof, R-40 equivalent floor and R-10 equivalent wall insulation and heat pads
- 175 cu. ft. heated basement storage with tie-downs
- 2" accessory hitch with 300 lb. carrying capacity
- Molded fiberglass rear cap (most models)
- Six-point hydraulic auto-leveling system
- EXCLUSIVE Road Armor™ suspension equalizes axle load to dampen shock and vibration



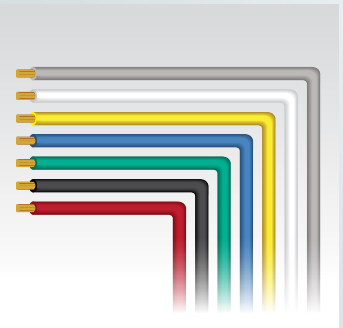
EXCLUSIVE Road Armor™ suspension  
Equalizes axle load to dampen shock and vibration



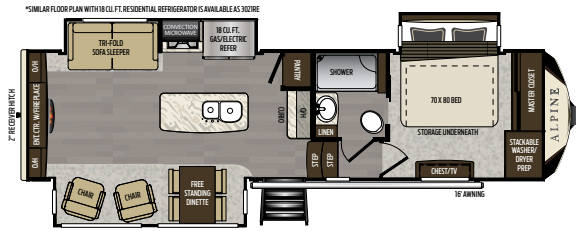
Cold weather rated and tested  
Camp to -14°F without water lines or tanks freezing



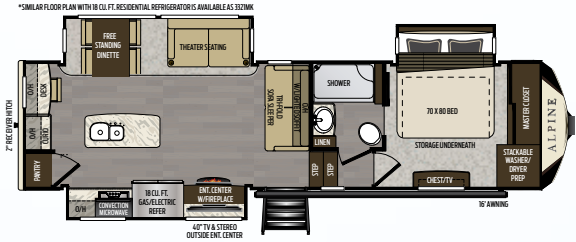
EXCLUSIVE KeyTV™  
Game-changing single-point control of over-the-air, cable and satellite feeds



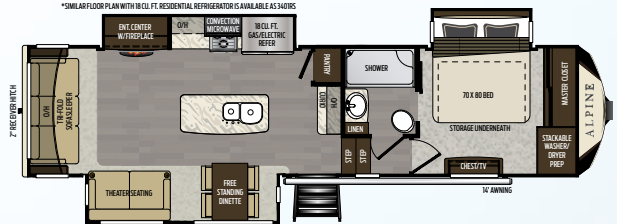
EXCLUSIVE color-coded Unified Wiring Standard  
Easy-to-trace circuits simplifies and expedites electrical and entertainment system troubleshooting



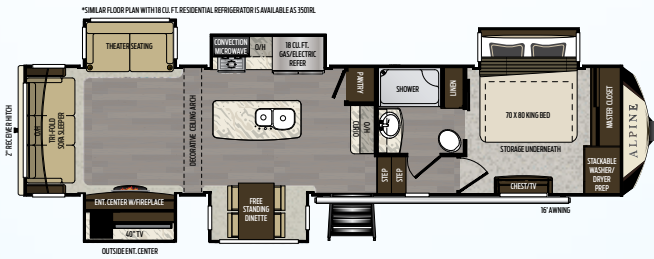
**3020RE/3021RE** | Rear entertainment, three slides, king bed  
Weight: 11652 LBS. | Length: 34' 2"



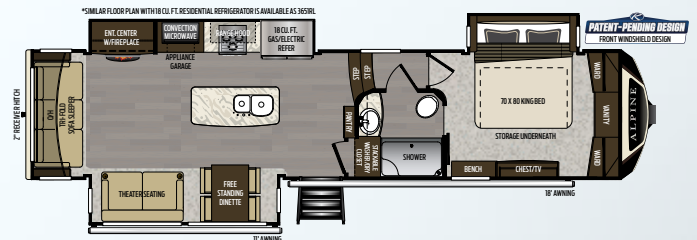
**3320MK/3321MK** | Mid-kitchen, three slides, desk  
Weight: 11725 LBS. | Length: 34' 3"



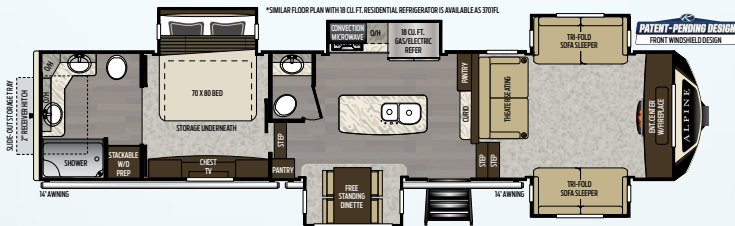
**3400RS/3401RS** | Rear living room, three slides, king bed  
Weight: 12116 LBS. | Length: 36' 4"



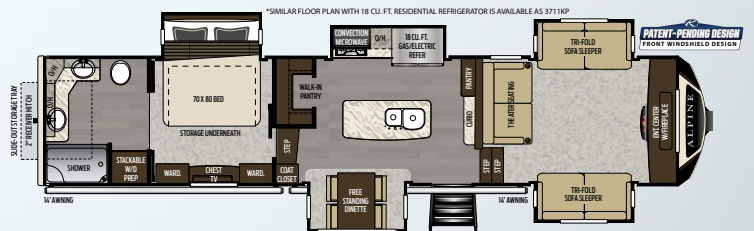
**3500RL/3501RL** | Rear den, five slides, stunning arch  
Weight: 13339 LBS. | Length: 39'



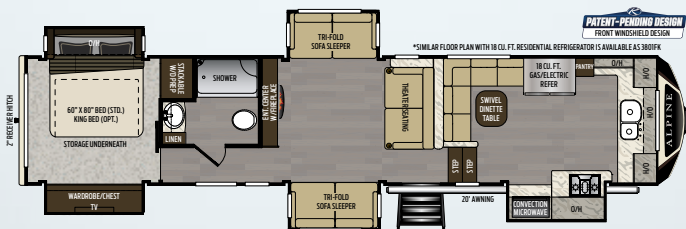
**3650RL/3651RL** | Rear living room, front windshield, range hood  
Weight: 12793 LBS. | Length: 39' 4"



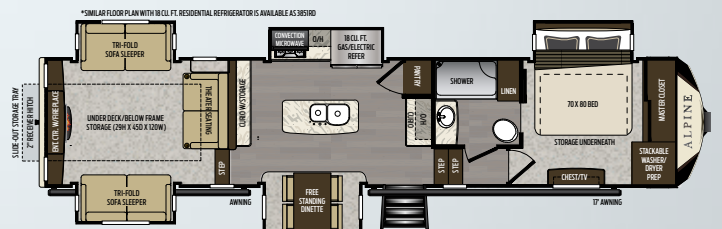
**3700FL/3701FL** | 1/2 bath, front living room, master suite, windshield  
Weight: 13762 LBS. | Length: 41' 5"



**3710KP/3711KP** | Front living, walk-in pantry, front windshield  
Weight: 13700 LBS. | Length: 41' 5"



**3800FK/3801FK** | Front kitchen, five slides, front windshield  
Weight: 13364 LBS. | Length: 39' 4"



**3850RD/3851RD** | Rear den, five slides, oversized storage tray  
Weight: 13890 LBS. | Length: 41' 4"

### FULL-PROFILE FIFTH WHEELS

MODEL	WEIGHT	CARRYING CAPACITY	HITCH WEIGHT	FRESH WATER	WASTE WATER	GRAY WATER	LPG	LENGTH*	WIDTH	HEIGHT	AWNING
3020RE	11652	3348	2405	66	49	83	60	34' 2"	8' 4"	13' 4"	16'
3021RE	11635	3365	2455	66	49	83	60	34' 2"	8' 4"	13' 4"	16'
3320MK	11725	3275	2470	66	49	83	60	34' 3"	8' 4"	13' 4"	16'
3321MK	TBD	TBD	TBD	66	49	83	60	34' 3"	8' 4"	13' 4"	16'
3400RS	12116	2884	2410	66	49	83	60	36' 4"	8' 4"	13' 4"	16'
3401RS	12149	2851	2445	66	49	83	60	36' 4"	8' 4"	13' 4"	16'
3500RL	13339	2161	2650	66	49	83	60	39'	8' 4"	13' 4"	16'
3501RL	13321	2179	2625	66	49	83	60	39'	8' 4"	13' 4"	16'
3650RL	12793	2707	2675	66	44	78	60	39' 4"	8' 4"	13' 4"	19'/11'
3651RL	12762	2738	2695	66	44	78	60	39' 4"	8' 4"	13' 4"	19'/11'
3700FL	13762	2738	2775	66	78	78	60	41' 5"	8' 4"	13' 4"	14'/14'
3701FL	13575	2925	2930	66	78	78	60	41' 5"	8' 4"	13' 4"	14'/14'
3710KP	13700	2800	2815	66	44	78	60	41' 5"	8' 4"	13' 4"	14'/14'
3711KP	13700	2800	2815	66	44	78	60	41' 5"	8' 4"	13' 4"	14'/14'
3800FK	13364	3136	2740	66	44	78	60	41' 5"	8' 4"	13' 4"	20'
3801FK	13310	3190	2735	66	44	78	60	41' 5"	8' 4"	13' 4"	20'
3850RD	13890	2610	2730	66	49	83	60	41' 4"	8' 4"	13' 4"	17'
3851RD	TBD	TBD	TBD	66	49	83	60	41' 4"	8' 4"	13' 4"	17'

DISCLAIMER: Product information is as accurate as possible as of the date of publication of this brochure. All features, floor plans, and specifications in this brochure are subject to change without notice. Please also consult Keystone's web site at [www.keystonerv.com](http://www.keystonerv.com) for more current product information and specifications. Tow Vehicle Disclaimer. CAUTION: Owners of Keystone recreational vehicles are solely responsible for the selection and proper use of tow vehicles. All customers should consult with a motor vehicle manufacturer or their dealer concerning the purchase and use of suitable tow vehicles for Keystone products. Keystone disclaims any liability or damages suffered as a result of the selection, operation, use or misuse of a tow vehicle. KEYSTONE'S LIMITED WARRANTY DOES NOT COVER DAMAGE TO THE RECREATIONAL VEHICLE OR THE TOW VEHICLE AS A RESULT OF THE SELECTION, OPERATION, USE OR MISUSE OF THE TOW VEHICLE. \*Length is defined as the distance from the centerline of hitch pin/coupler to rear bumper of trailer.



more product detail at  
[www.keystonerv.com/Alpine](http://www.keystonerv.com/Alpine)

## STANDARDS AND OPTIONS

### EXTERIOR

Rear 2" accessory hitch w/ 300lb. capacity  
 Road armor™ shock absorbing hitch pin  
 Solar prep  
 Rear observation camera prep  
 G-rated tires  
 Heavy duty 7,000 lb. Axles w/never-adjust brakes  
 12" beams with z-frame technology  
 "No sweat" vented attic system  
 50 AMP service w/detachable power cord  
 Hydraulic selector valves for slide-outs  
 Hydraulic front landing jacks w/8" diameter all-terrain landing pads  
 Rear ladder  
 One-touch electric awning package with adjustable arms  
 Tinted 80% safety glass windows  
 MaxTurn Technology™ high-gloss fiberglass front cap w/HitchVision™ backup mirror  
 High-gloss exterior sidewalls, baggage doors, and entry doors  
 Class "a" style dual latch "slam" baggage doors  
 Super-size 6" 4" tall, 30" wide entry door  
 High-gloss fiberglass rear cap (n/a 3700, 3701, 3710, 3711, 3800, 3801)  
 One-piece polypropylene underbelly  
 Dual pane windows (optional)  
 5500 LP generator (optional)  
 Generator prep (optional)  
 Artic sky full body paint (optional)  
 Midnight merlot full body paint (optional)  
 Malibu sand full body paint (optional)

### ALL-IN-ONE WATER WORKS EXTERIOR UTILITY CENTER

KeyTV™ multisource TV control system  
 Easy-siphon winterization system  
 Water heater bypass  
 Enclosed low point drain valves  
 Ducted heat for cold weather protection  
 Black tank spray hookup

### SUSPENSION

Improved impact absorption  
 Improved axle equalization  
 Greasable wet bolts (8)  
 Long-lasting 1/2" steel shackle plates  
 Long-lasting bronze bushings

### INTERIOR

Tri-fold sleeper sofa  
 High-back custom dinette chairs (2)  
 Folding chairs (2)  
 Extra tall 6'10" main slide height  
 MCD day/night roller shades

### INTERIOR (CONTINUED)

Ceiling fan  
 Electric roof vent (kitchen)  
 LP leak detector  
 Translucent glass shower enclosure w/massaging shower head  
 Shower skylight  
 Porcelain toilet  
 Single-level master bedroom suite  
 70" x 80" pillow top king bed mattress (optional 3800FK, 3801FK)  
 Cross ventilation bedroom windows (where available)  
 Quilted bedspread and pillows  
 Samsung residential refrigerator (mandatory on 3021RE, 3321MK, 3401RS, 3501RL, 3651RL, 3701FL, 3711KP, 3801FK, 3851RD)

### PACKAGES

#### UPGRADED APPLIANCE

Furrion® RV Chef Collection kitchen  
 30" convection oven/microwave  
 12-gallon DSI 2- way water heater  
 35,000 BTU furnace (most models)  
 Heavy-duty ball bearing drawer guides  
 Central vacuum system

#### DELUXE SOLID SURFACE

Solid surface countertops  
 Solid surface sink cover  
 Stainless steel, extra deep sink with dual bowls  
 High-rise, single-lever kitchen faucet with sprayer  
 Maximized kitchen storage w/more drawers and pantry space

#### SUPER CINEMA

50" LED TV  
 Furrion® Sound System  
 Outside speakers  
 KeyTV™ multisource TV control system

#### NORTH FACE INSULATED

Triple insulated  
 Heated basement  
 Heat ducting to tanks w/12 volt heat pads  
 Heated "water works" area

#### WHISPER AIR HVAC SYSTEMS

15,000 BTU air conditioner with cold air return vents (2)  
 iN-Command® HVAC system control w/ Global Connect technology  
 16,500 BTU heat pump  
 Fully programmable dual zone temperature control



BUILT FOR THE LONG HAUL



PRINT 8.2018



**Keystone RV  
Company**