

Volante

CROSSROADS
Recreational Vehicles



Volante



Affordable Elegance

With a vast array of floorplans all constructed with the philosophy of “affordable elegance”, you’re sure to find the perfect RV with the Volante!

3801MD Kitchen,
Dining Area, and
Living Area

Volante Fifth Wheel

The Volante offers rich appointments and high quality material available in a package that is affordable to all customers.

A striking exterior is tastefully offset with complementing designer interiors.



360DB Bunk Room with Trundle Beds



3801MD Bathroom with Residential Size Shower



360DB Living & Entertainment Area

360DB Kitchen & Living Space

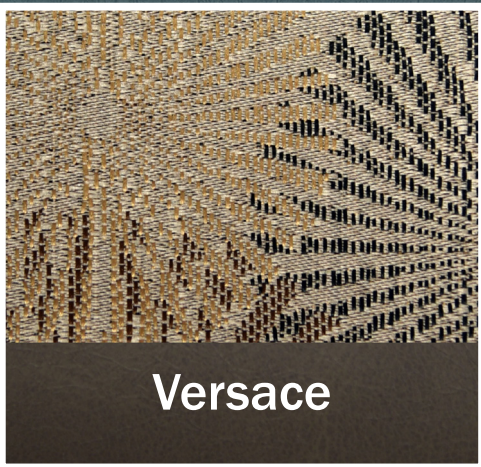


3801MD Bedroom with Spacious Closet

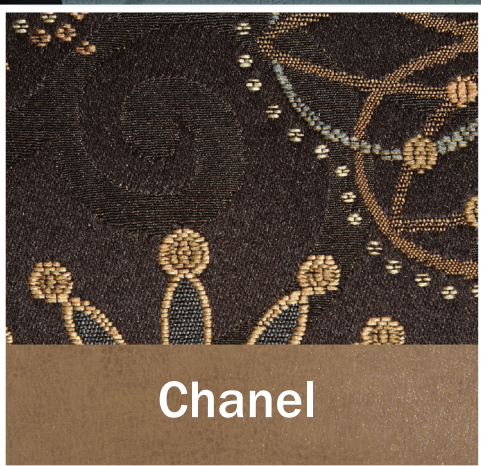
Fabric Options



Jacobs



Versace



Chanel



33RL
Kitchen &
Dinette Area



33RL
Entertainment
Center

Volante Travel Trailer

High-end features include power awning w/ LED lights, tri-fold sofas, 8 ft³ refrigerator, stainless steel appliances, and seamless countertops are a glimpse of what Volante has to offer.



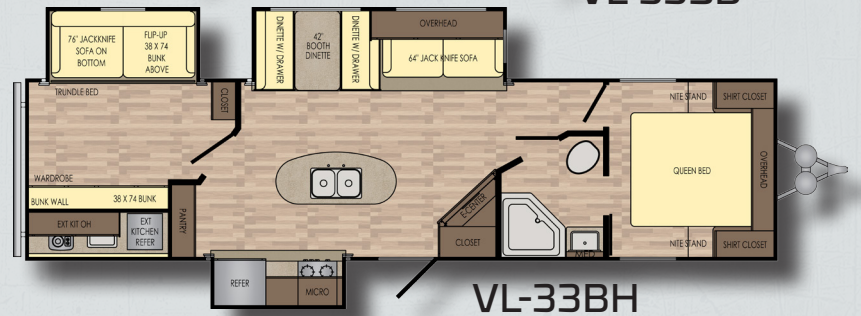
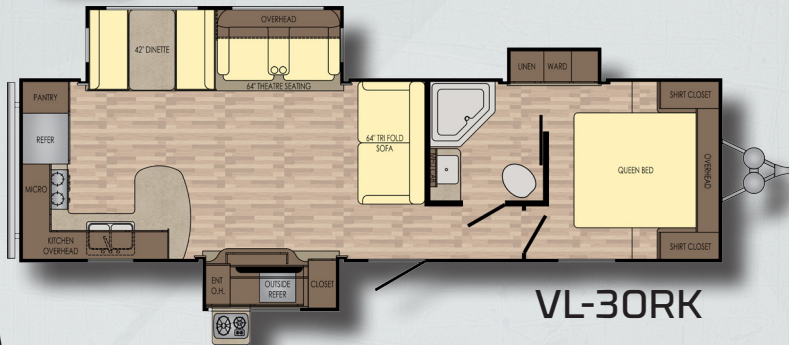
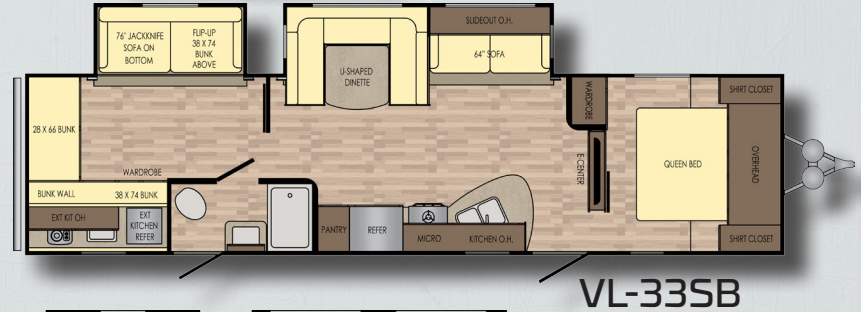
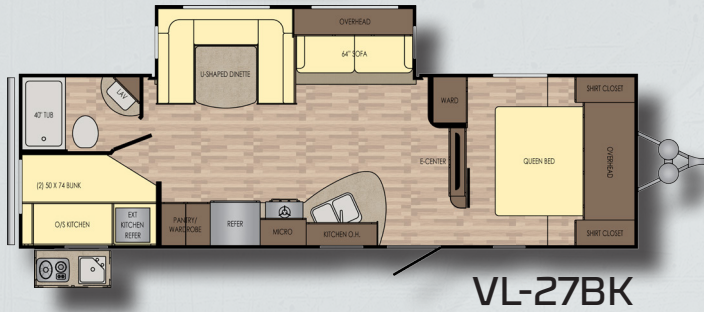
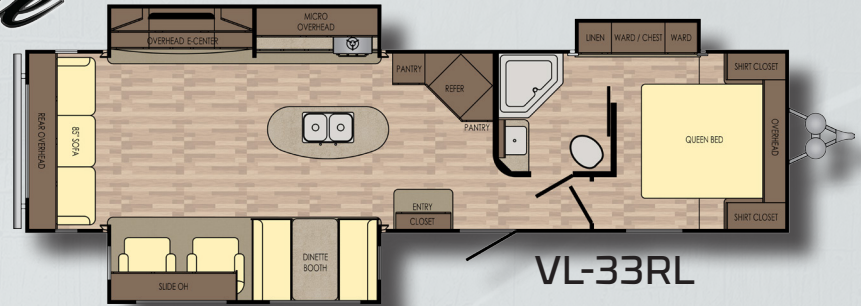
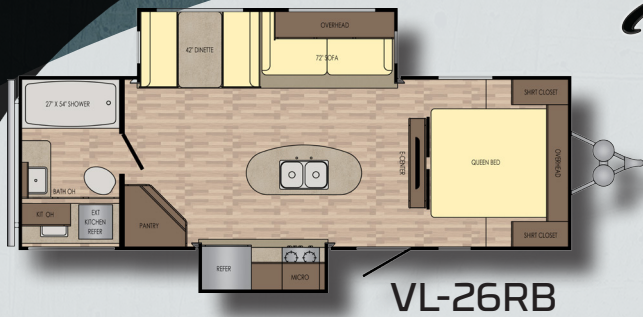
Volante offers the ultimate interior spaciousness. Whether you need to entertain guests, prepare a large meal, or just want to enjoy camping without feeling confined, Volante provides the answer time and time again!



33RL
Kitchen &
Living Space

Volante

TRAVEL TRAILERS

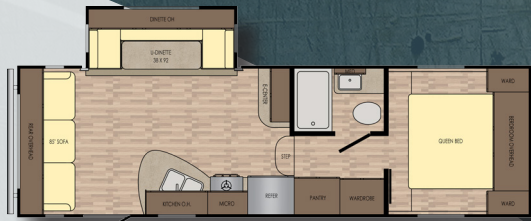


MODEL	VL-26RB	VL-27BK	VL-30RK	VL-33RL	VL-33SB	VL-33BH
DRY WEIGHT	6816	6644	TBD	8456	8034	8864
GVWR	9610	9510	TBD	9950	9950	10250
CARRYING CAP.	2794	2866	TBD	1494	1916	1386
HITCH WEIGHT	810	712	TBD	1042	824	1002
LENGTH	29' 2"	31' 11"	TBD	36' 8"	37' 2"	36' 7"
EXT. HEIGHT WITH A/C	11' 4"	11' 4"	TBD	11' 4"	11' 4"	11' 7"
FRESH WATER	60 Gal	60 Gal	TBD	60 Gal	60 Gal	60 Gal
BLACK WATER	44 Gal	44 Gal	TBD	44 Gal	44 Gal	44 Gal
GRAY WATER	88 Gal	44 Gal	TBD	88 Gal	44 Gal	88 Gal
TIRE SIZE	ST225/75R15 D	ST225/75R15 D	TBD	ST225/75R15 D	ST225/75R15 D	ST225/75R15 D

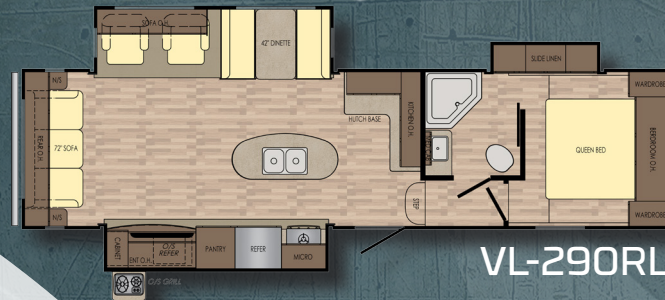
FIFTH WHEELS

Volante

HIGH PROFILE



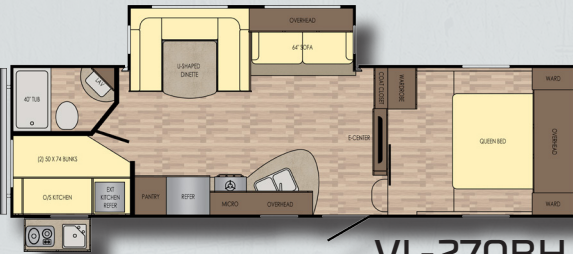
VL-240RL



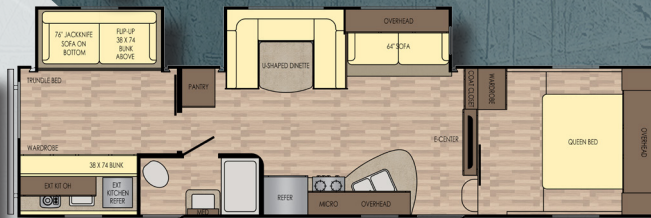
VL-290RL



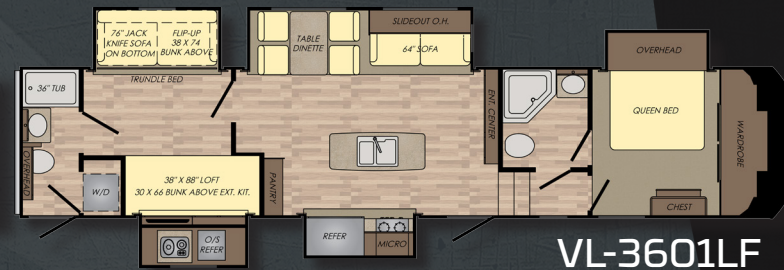
VL-3201K



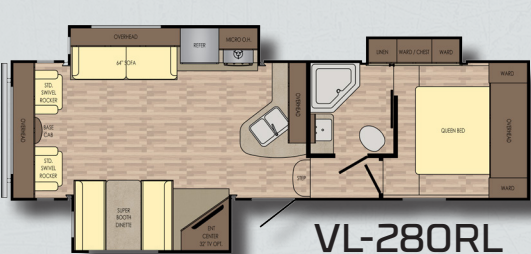
VL-270BH



VL-310BH



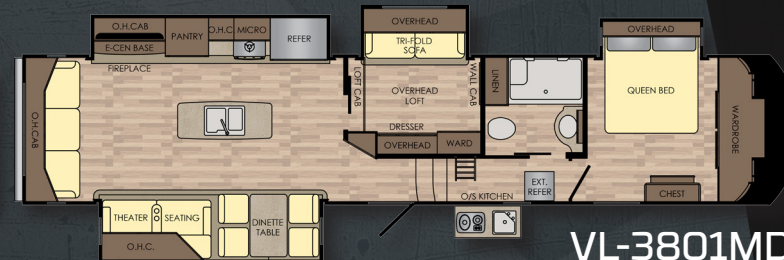
VL-3601LF



VL-280RL



VL-360DB



VL-3801MD

MODEL	VL-240RL	VL-270BH	VL-280RL	VL-290RL	VL-310BH	VL-360DB	VL-320/3201K	VL-360/3601LF	VL-380/3801MD
DRY WEIGHT	6976	7704	8366	8646	9024	11276	10732	12862	12470
GVWR	9100	9300	9700	10415	11800	13450	14010	14590	14245
CARRYING CAP.	2124	1596	1334	1769	2776	2174	3278	1728	1775
HITCH WEIGHT	1240	1670	1736	1618	1642	1828	2012	2594	2246
LENGTH	27' 11"	30' 6"	30' 5"	33' 6"	34' 11"	39' 11"	35' 10"	41' 0"	41' 2"
EXT. HEIGHT WITH A/C	11' 9"	12' 1"	12' 1"	12' 1"	12' 3"	12' 7"	13' 1"	13' 4"	13' 3"
FRESH WATER	60 Gal	60 Gal	60 Gal	60 Gal	60 Gal	60 Gal	64 Gal	64 Gal	64 Gal
BLACK WATER	44 Gal	44 Gal	44 Gal	44 Gal	44 Gal	88 Gal	42 Gal	84 Gal	42 Gal
GRAY WATER	44 Gal	44 Gal	44 Gal	44 Gal	44 Gal	88 Gal	42 Gal	84 Gal	84 Gal
TIRE SIZE	ST225/75R15D	ST225/75R15D	ST225/75R15D	ST225/75R15D	ST225/75R15D	ST235/80R16E	ST235/80R16E	ST235/80R16E	ST235/80R16E

Volante

CrossRoads RV offers a one year limited warranty on all products from the date of purchase. This applies to units sold in the United States and Canada by authorized CrossRoads Dealers.



www.crossroadsrv.com
1140 W. Lake St Topeka, IN 46571
(260) 593 - 3850

DISCLAIMER: Product information is as accurate as possible as of the date of publication of this brochure. All features, floor plans, and specifications in this brochure are subject to change without notice. Please also consult CrossRoads' web site at www.crossroadsrv.com for more current product information and specifications. Tow Vehicle Disclaimer. CAUTION: Owners of CrossRoads recreational vehicles are solely responsible for the selection and proper use of tow vehicles. All customers should consult with a motor vehicle manufacturer or their dealer concerning the purchase and use of suitable tow vehicles for CrossRoads products. CrossRoads disclaims any liability or damages suffered as a result of the selection, operation, use or misuse of a tow vehicle. CROSSROADS' LIMITED WARRANTY DOES NOT COVER DAMAGE TO THE RECREATIONAL VEHICLE OR THE TOW VEHICLE AS A RESULT OF THE SELECTION, OPERATION, USE OR MISUSE OF THE TOW VEHICLE. REFERENCE CROSSROADS RV COMPANY OWNERS MANUAL FOR LIMITED WARRANTY DETAILS. *Length is defined as the distance from the centerline of hitch pin/coupler to rear bumper of trailer.

STANDARDS

LIVING ROOM

- Residential Wood Blinds
- Premium Residential Furniture
- Decorative Glass in Sofa Slide-out Cabinet Doors
- Designer Valances with Hard Lambrequin Legs
- Full Extension Drawer Under Dinette
- Residential Wood Blinds in Living Room
- Chair Rail in Slide-out
- 81" Interior Height (Travel Trailer Only)
- LED Lights Throughout
- Wood Slide-out Fascia
- Tri-fold Hide-a-Bed Sofa
- AM/FM/CD/DVD Bluetooth Stereo System
- Flush Floor Slide-out with Large Dinette Windows

KITCHEN

- Seamless Counter Top (TT Only)
- LG Solid Surface Counter Top (FW Only)
- XL 50/50 Stainless Steel Sink
- Pull-Out Sprayer Faucet
- Stainless Steel Microwave
- Stainless Steel Oven
- Stainless Steel 8 ft³ Refrigerator
- Super Booth Dinette (VBM)
- Range hood with Light and Exhaust Fan
- High Rise Faucet
- Wall Mounted Systems Monitor Panel
- Ball Bearings and Drawer Guides in Drawers

BATHROOM

- Large Parchment Color Lavatory Bowl
- Foot Flush Porcelain Toilet
- Linen Storage (VBM)
- Mirrored Medicine Cabinet
- Glass Shower Door & Neo Angle Shower (VBM)
- Shower Curtain w/ Curved Shower Track (VBM)

BEDROOM

- Decorative Bedspread
- 60" X 74" Mattress
- TV Hook-up
- Coordinated Window Treatments
- Night Stands w/ Outlets on Each Side

EXTERIOR

- 60 Gallon Fresh Water Tank
- Tinted Safety Glass Windows

- Radial Tires - Nitro Filled
- Easy-open Entry Step
- Bumper w/ Drain Hose Storage & End Caps
- LED Lit Exterior Speakers
- Molded Rain Gutters w/ 3" Drip Spouts
- Keyed-A-Like Baggage Doors
- Solar Prep
- Backup Camera Prep
- Outside Shower - Hot/Cold

CONSTRUCTION

- 3/8" Walkable Roof Decking
- 16" OC Truss Rafters with 4 1/2" Crown
- R-7 Rated Fiberglass Roof Insulation
- Rain Gutters Along Entire Roof Line
- Laminated Sidewall Construction
- 5/8" Floor Decking
- R-7 Rated Fiberglass Sidewall Insulation
- Steel I-Beam Frame
- R-7 Rated Fiberglass Floor Insulation
- Maximum Linoleum Throughout
- Moisture Barrier Wrapped Floor
- 30" Radius Main Entry Door w/ Screen

CONVENIENCE PACKAGE (STANDARD)

- 3-Burner Range with Oven
- TV Antenna
- Tub Surround
- Water Heater Bypass
- Smoke Detector
- LP Detector
- 13,500 BTU A/C
- Fully Enclosed and Heated Underbelly
- Electric Awning with LED Lights
- Microwave
- Drawers Under Booth Dinette
- Power Vent in Bath
- Large Swing out Entry Assist Handle
- 6 Gallon Gas/Electric DSI Water Heater
- Wood Blinds in Living Area
- Outside Shower
- 8 ft³ Gas/Electric Refrigerator
- Skylight in Shower/Tub
- Sink Covers
- Tri-fold Hide-A-Bed Sofa
- Spare Tire and Carrier
- Black Tank Flush

OPTIONS

- Aluminum Rims (Mandatory)
- LCD Remote System (Mandatory)
- Power Tongue Jack (TT Mandatory)
- Solid Surface Countertops (FW Mandatory)
- 39" LED TV
- Free Standing Dinette with 4/ Chairs
- 15,000 BTU A/C
- 50 Amp Service with 2nd A/C Prep
- 2nd A/C in Bedroom (Must Have 50 AMP)

- Rear Ladder
- Upgraded Insulation
- Tri-fold Hide-A-Bed FW only (IPO jack Knife and Trundle Bed in Bunk Room, 310BH, 360DB)

HP PACKAGE

(Available on VL3201IK, VL3601LF & VL3801MD)

- 3-Burner Range with Oven
- TV Antenna
- Tub Surround
- Water Heater Bypass
- Smoke Detector
- LP Detector
- Enclosed Underbelly
- Electric Awning with LED Lights
- Stainless Steel Microwave
- 10-gallon Gas/Electric DSI Water Heater
- Large Entry Assist Handle at Entrance
- Wood Blinds in Living Area
- Outside Shower
- Power Vent in Bath
- Sink Covers
- Skylight in Bathroom
- Tri-fold Hide-A-Bed Sofa
- Spare Tire and Carrier
- Black Tank Flush
- 48" LED TV
- Fireplace
- Ceiling Fan
- Pendant Light Over Kitchen Island
- Free Standing Dinette w/ 4 Chairs
- Theater Seating

HP OPTIONS

- 18 ft³ Residential Refrigerator with 1000 Watt Inverter (3201IK, 3801MD, 3601LF) (Mandatory)
- 12 ft³ Four Door Gas/Electric Refrigerator (320IK, 380MD, 360LF)
- LCD Remote System (Mandatory)
- Electric Leveling System (Mandatory)
- Solid Surface Countertops (Mandatory)
- 15,000 BTU A/C (Mandatory)
- 50 Amp Electrical Service w/2nd A/C Prep (Mandatory)
- Aluminum Rims (Mandatory)
- Exterior Ladder (Mandatory)
- Upgrade Insulation (Mandatory)
- 2nd A/C Unit in Bedroom

*VBM: Varies By Model