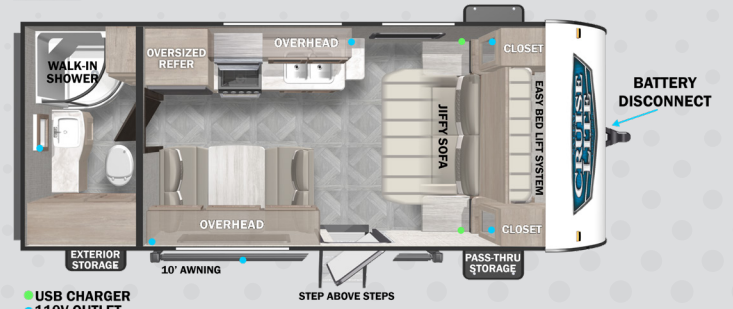
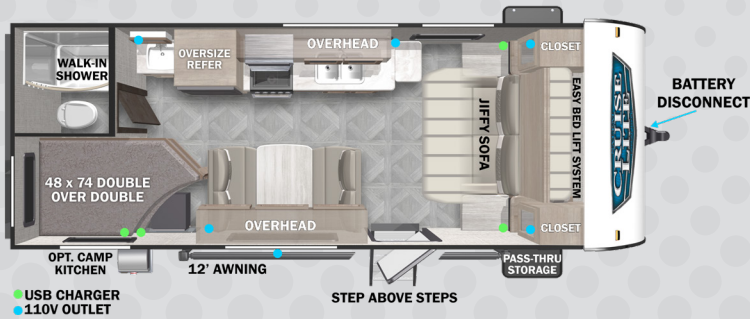


# SALEM CRUISE LITE

FOREST RIVER



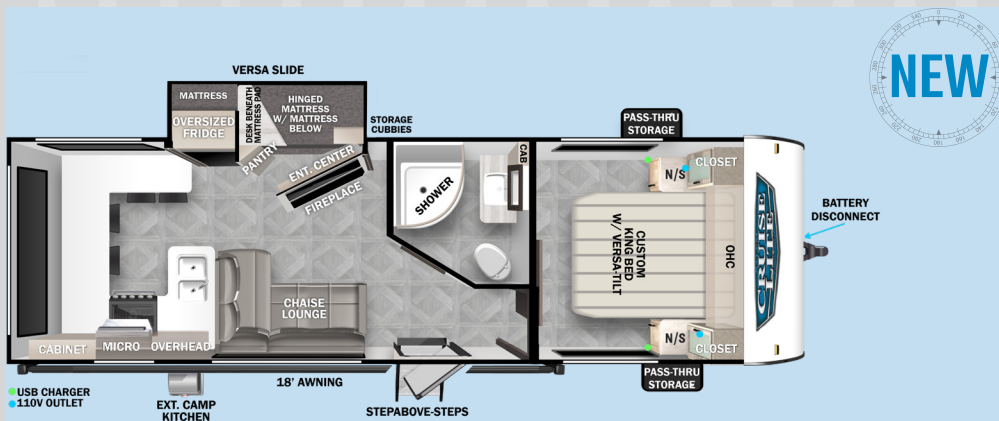
**171RBXL** HITCH: 521 UVW: 3,836 LBS LENGTH: 22'8"



**19DBXL** HITCH: 520 UVW: 4,483 LBS LENGTH: 24'8"



**24RLXL** HITCH: 550 UVW: 5,063 LBS LENGTH: 28'11"

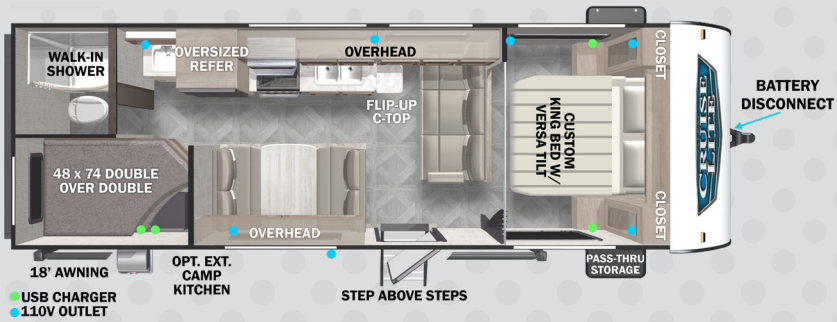


**24VIEW** HITCH: 640 UVW: 6,158 LBS LENGTH: 29'11"

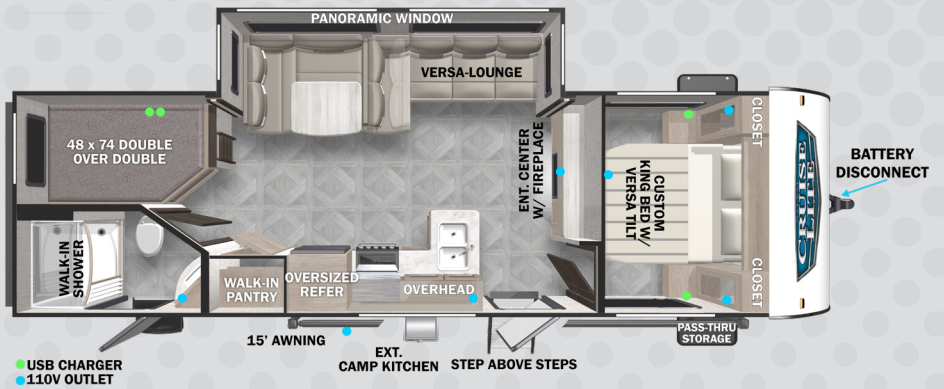


**240BHXL** HITCH: 570 UVW: 5,343 LBS LENGTH: 28'10"

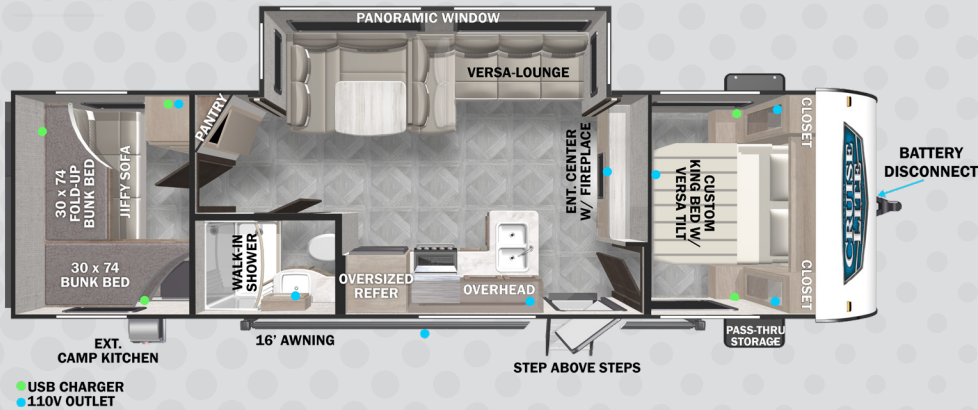




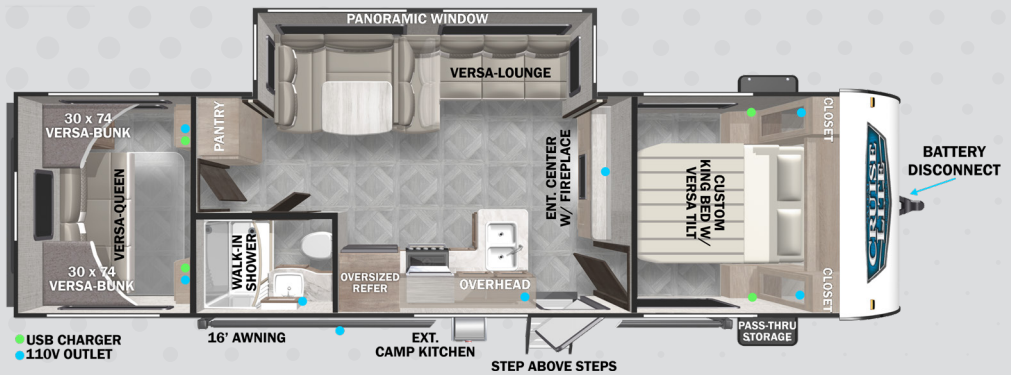
**261BHXL** HITCH: 450 UVW: 4,818 LBS LENGTH: 28'8"



**263BHXL** HITCH: 682 UVW: 5,854 LBS LENGTH: 31'9"



**273QBXL** HITCH: 752 UVW: 6,028 LBS LENGTH: 33'5"



**28VBXL** HITCH: 790 UVW: 6,208 LBS LENGTH: 33'2"

**FIND ALL OF THE DETAILS**  
 SPECIFICATIONS, VIDEOS AND MORE  
 BY SCANNING THE QR CODE  
 WITH YOUR DEVICE OR VISIT  
[WWW.FORESTRIVERINC.COM/SALEM](http://WWW.FORESTRIVERINC.COM/SALEM)

MEET YOUR SALEM CRUISE LITE DEALER

All information contained in this brochure is believed to be accurate at the time of publication. However, during the model year, it may be necessary to make revisions and Forest River, Inc., reserves the right to make all such changes without notice, including prices, colors, materials, equipment and specifications as well as the addition of new models and the discontinuance of models shown in this brochure. Therefore, please consult with your Forest River dealer and confirm the existence of any materials, design or specifications that are material to your purchase decision. © 2023 Salem, a Division of Forest River, Inc., a Berkshire Hathaway company. All Rights Reserved.

