



2027 Product Sales Guide

I M P E R I U M

V E N D E T T A

WHY AXIOM RV?



Because your customers demand more and we deliver it.

To every dealer or salesperson, we get it you're already bombarded with brands promising "better." But at Axiom RV, we're not just saying it we're proving it.

We didn't build Axiom RV to follow the industry. We built it to challenge it. Every unit is loaded with real, tangible, sellable advantages your customers can see, feel, and believe in. From unmatched ceiling heights and exclusive wraparound seating to the industry's largest pass-through storage and the most efficient heating/cooling system ever put in a towable we're not here to compete. We're here to lead.

Your customers will ask what makes Axiom different. This guide answers that.

- ✓ **Industry-first clean roof system eliminating leak risks and warranty headaches**
- ✓ **Perfect Air Mini Split HVAC RVIA APPROVED 50% more efficient, quieter, and cleaner**
- ✓ **7'0" upper deck ceilings, 7'6" Bathroom 9'10" main room headroom undeniably bigger**
- ✓ **More storage. More water. More sleeping. More EVERYTHING.**

You've got limited lot space. So, ask yourself:

Do you want another "me too" product, or do you want something that actually turns heads, shortens turn times, and builds margin you can count on?

We have worked with a lot of dealers over the years. We know what matters.

- Construction you can stand behind
- Features that photograph well and show even better
- Systems that eliminate the "shakedown" phone calls
- Design that makes your customers say "wow" before they even step inside

And we back it all with a Customer Experience Team that's obsessed with support, service, and making sure our dealers win every time.

Just the founders who want more!!

AJ Jones, John Jones & Tom Ison

Co-Founders, Axiom RV

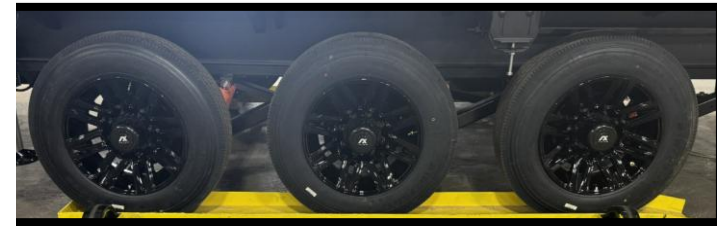
BUILT FOR MORE





- Eliminates shakedown due to massive reduction in road vibration, reducing service and warranty needs
- Reduces rattling and vibration for a more comfortable ride
- Provides nearly 2x more articulation compared to a leaf spring suspension
- Ideal suspension to combat everyday potholes, rough highways, and roads
- Improved design extends longevity compared to leaf springs
- Coil spring systems require less maintenance than other types of suspension systems
- Track bar design stabilizes the axles and suspension and reduces chassis movement during extreme turn situations
- Durable powder coat finish for enhanced corrosion resistance
- Weight capacities of up to 8,000 lbs. per axle and available in single and tandem configurations

Scientifically Proven: 50% Less Road Shock



RV DEALER FEEDBACK



LCI Video Touring System



HAUL SAFER AND SMARTER THAN EVER



ANTI-LOCK BRAKE
SYSTEM

ANTI-LOCK BRAKING SYSTEM

The Lippert trailer anti-lock braking system combines the best of ABS and connected RV technology to deliver a comprehensive safety platform for all trailer types, particularly travel trailers and other RVs



Scan to see
Lippert ABS
in action!



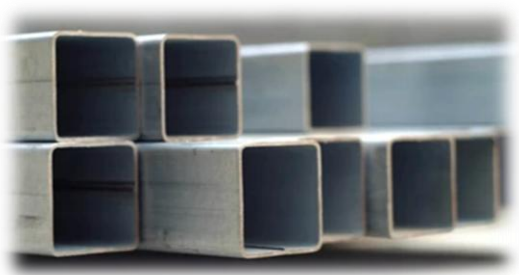
Additional Features

- Promotes exceptional towing safety and driver confidence
- Improves control on slippery roads and in emergency braking situations
- Integrates with trailer brakes to prevent trailer wheel lock-up
- Ready to connect to the OneControl app and Compass Connect
- App provides digital odometer, system monitoring and more
- Applicable across virtually all trailer types (2-6 wheels, 1-3 axles)
- Works with electromagnetic drum brakes (7-way wiring connector required)
- Fully compatible with or without OEM or aftermarket brake controllers
- Non-intrusive system will not interfere with trailer gain settings
- All-encompassing kit includes everything needed for complete installation

Low Alloy Steel Sidewalls & Bath Deck Construction

Advantages

- **Strength:** Suitable for high-stress applications requiring load-bearing capacity.
- **Durability:** Performs well in harsh environments and under heavy use.
- **Affordability:** Cost-effective for large-scale or general construction projects.
- **Availability:** Comes in a variety of grades and sizes for different needs.



72%

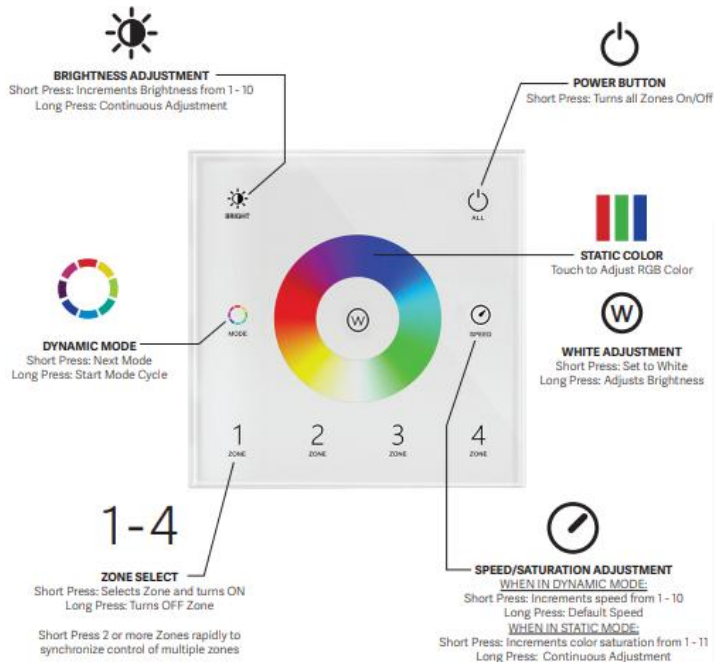
• STRONGER •

Aluminum vs Steel Square Tube: Comparison Chart

Feature	Aluminum Square Tube	Steel Square Tube
Weight	Lightweight	Heavy
Strength	Good strength-to-weight ratio	Higher tensile and yield strength
Corrosion Resistance	Excellent	Requires coating or treatment
Cost	Generally more expensive	Generally more cost-effective
Ease of Fabrication	Easier to cut, machine, and weld	More challenging to fabricate
Thermal Conductivity	Higher, beneficial for heat dissipation	Lower
Applications	Aerospace, automotive, marine, consumer goods	Construction, automotive, industrial, infrastructure

AX Pathfinder Lighting System W/ Integrated Turn Signals (*Patent Pending*)

RGB Wall Remote Operating Instructions



Why It Matters (Key Selling Points)

✓ Enhanced Safety

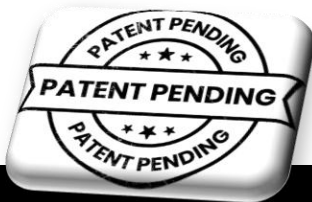
- Turn signals built into the side walls and the Axiom front cap make intentions visible from multiple angles.
- Added visibility reduces blind spot risks, especially when towing large fifth wheels.
- On the highway, drivers only have seconds to make a decision — this system gives them that time back.

✓ Premium Automotive Look

- LED signature lighting in the front cap and side walls creates a distinctive Axiom look.
- Stands out in a crowded lot and on the road.

✓ Confidence on the Road

- Drivers feel more secure with signals that are impossible to miss.
- Especially valuable on highways, in heavy traffic, and during night driving.



AXIOM RV INDUSTRY LEADING CEILING HEIGHTS :



Top 5 Reasons for Axiom's Tall Ceiling Heights

1. **More Space, More Comfort** – Creates an open, residential feel with unmatched headroom for daily living.
2. **Better Airflow & Cooling** – Taller ceilings improve circulation, working perfectly with Axiom's mini-split HVAC system.
3. **Expanded Storage** – Extra vertical height means taller cabinets and more overhead storage.
4. **Luxury Residential Design** – Allows for upgraded lighting, trim, and design features that elevate the look and feel.
5. **Tall-Friendly Living** – No ducking or stooping — true comfort for owners and guests over 6 feet tall.



Axiom RV TPO Roofing Material Info:



AXIOM RV Freespan Roofing System :

LAB TESTED.

Flexibility that goes distance.

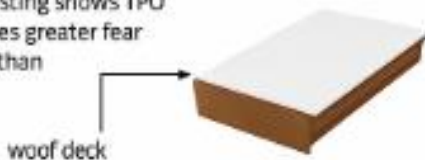
Strict tests Freespan TPO ranks above all leading brands in the marketplace, in flexibility, even



TPO IS #1 IN FLAT ROOFING.

4X stronger tear resistance

Recent testing shows TPO has 4 times greater tear strength than EPDM



Tests prove it. SUPREME TPO provides the most durable, flexible, and algae-resistant TPO roof on the market.

NO MESSY CHALKING OR RUNOFF



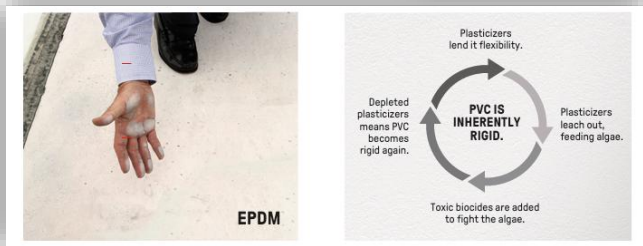
Chalking resistance makes TPO perfect for a white or light-colored

TPO IS #1 IN FLAT ROOFING.

Recent testing shows TPO has 4 times greater tear strength than EPDM.

Superior flexibility to PVC

Algae-resistant TPO outperforms the competition in chalking and algae-fighting for a long-lasting strength



Maintenance Website





Axiom RV CLEARSPAN Roof Design:



Built Stronger. Lasts Longer. Maintains Easier.

1. Industry-Leading Clean Roof Design

- **2–3 fewer roof A/C units** and **2 fewer vents** than competing brands.
- Less roof clutter = **fewer seal points, less caulk, and fewer potential leaks.**
- Easier inspections and quicker maintenance—saving you time and money.

2. TPO Roofing Material Advantage *(Lab Tested)*

- **325% More Flexible** than PVC and **145% more flexible** than EPDM.
- **4X Stronger Tear Resistance** vs. EPDM—tough enough for long-term durability.
- Outperforms the competition in **chalking resistance** and **algae resistance**, meaning no messy white streaks down your sidewalls.

3. Performance You Can See

- **No Messy Chalking or Runoff** – keeps your RV's exterior cleaner, longer.
- **Algae-Resistant Surface** – stops streaks and staining.
- **Cool Roof Technology** – reflective white TPO helps regulate roof temperatures, reducing heat load inside.
- **Maintenance Made Simple** – minimal sealant use, easy cleaning, and longer life between service intervals.

4. Built for the Long Haul

- Designed to last **15–30+ years** with proper care.
- **Recyclable and eco-friendly** compared to older roofing systems.
- Partnered with **Alpha Systems LLC**, one of the RV industry's most trusted suppliers.
- No water run off from roof mounted A/C's

Why Choose Axiom's CLEARSPAN ROOFING SYSTEM

- Stronger, more flexible, and longer-lasting than traditional EPDM or PVC.
- Fewer holes = fewer headaches.
- Sleek, maintenance-friendly design built for today's RV lifestyle.
- Backed by lab testing, real-world results, and Axiom RV innovation.



Revolutionizing RV Comfort with Perfect Aire

COMFORT WITHOUT COMPROMISE

A New Era of Comfort for the Open Road

Perfect Aire and Axiom are revolutionizing the RV industry with a smarter, more efficient approach to comfort. By moving climate control under the chassis, our mini-split systems deliver more than a foot of extra headroom and a quieter, more relaxing ride. Zoned, ductless operation means better cooling, greater energy efficiency, and personalized comfort in every space—with three independent zones for total control. Designed for reliability and built to outperform rooftop units, Perfect Aire mini-splits are redefining what RV living can be.



PERFECT AIRE MINI-SPLITS OUTPERFORM AT EVERY TURN

Perfect Aire Mini-Splits

- Under-chassis mounting preserves over a foot of headroom
- Zoned cooling and heating for even temperatures
- Roof remains intact — no risk of leaks from unit installation
- Quieter, more reliable operation
- App and remote control for full scheduling and management
- Built-in heat pump for year-round heating and cooling

Traditional Rooftop AC Units

- Rooftop mounting reduces ceiling height and interior space
- Poor airflow and hotspots throughout RV
- Rooftop installation increases risk of leaks and water damage
- Noisy operation; prone to overheating
- Basic manual controls, limited smart features
- Often requires separate heating systems



Axiom RV – First in the Industry.

•First RV OEM with RVIA Approval

Axiom RV is proud to be the **first RV manufacturer to achieve RVIA approval** for a patent-pending mini-split HVAC system.

•Exclusive Partnership with Perfect Aire

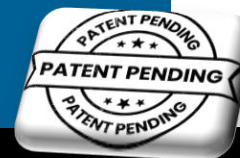
We are the **first OEM to partner with one of the largest mini-split providers in the U.S.**, bringing proven residential technology into the RV world.

•2-Year Exclusive Advantage

Axiom RV holds a **two-year exclusive agreement** with Perfect Aire, ensuring our customers receive the most advanced, efficient, and reliable climate control system in the industry.

•Why It Matters

- More living space with no bulky rooftop units.
- Quieter, more efficient operation.
- Year-round comfort with zoned heating and cooling.
- An industry-first innovation available **only from Axiom RV.**



Perfect Aire Brand Info



With Axiom and Perfect Aire, you're backed by more than just a great product—you're backed by a team dedicated to your comfort.

From first use to everyday operation, our expert support team is here to ensure your mini-split performs at its best. Our owner's portal puts troubleshooting guides, product registration, and warranty support right at your fingertips.

And if you ever need extra help, the Perfect Aire support team is ready by phone or email to answer questions and keep you comfortable on the road.

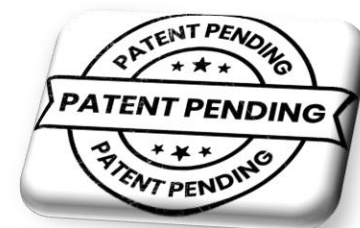
Scan for Support and Resources
(or visit perfectaire.us/pages/axiom)



Troubleshooting, Warranty & Parts
(833) 821-0503 | splitsupport@perfectaire.us

Perfect Aire and Axiom are redefining what's possible for RV comfort—delivering smarter technology, reliable performance, and expert support for every mile ahead. With easy setup, personalized control, and customer care you can count on, we're not just changing the way you cool and heat your RV—we're raising the standard for life on the road.

**SMARTER TECHNOLOGY.
GREATER COMFORT.
UNMATCHED SUPPORT.**
The Future of RV Living Starts Here.



Perfect Aire Brand Info

FAST SETUP. TOTAL CONTROL.

Whether you're parked at a campsite or prepping your RV for the season, the ConnectLife app makes it easy to stay in charge of your comfort from anywhere. With just a few taps, you can adjust the temperature, set daily schedules, monitor system performance, and even automate your mini-split to match your lifestyle — all from the palm of your hand.



SET UP IN MINUTES! NO COMPLICATED WIRING OR SPECIAL EQUIPMENT REQUIRED!

- 1 **Download the ConnectLife App**
Available free on the App Store and Google Play.
- 2 **Create Your Account**
Log in or set up a new account directly from the app.
- 3 **Power On Your Unit**
Turn on your mini-split to enable pairing mode.
- 4 **Follow the In-App Prompts**
Connect temporarily to the unit's built-in Wi-Fi, then pair it with your home or RV Wi-Fi network.
- 5 **Control Your Comfort Anywhere**
Start managing zones, setting schedules, and monitoring your system — *right from your phone!*

SEE HOW EASY COMFORT CAN BE.

Watch our quick overview video to learn how easy it is to connect, control, and customize your comfort with the app.

Scan the QR code to watch now!
(or visit <https://pabqr.com/qr/Axiom-app-video>)



MORE THAN AN APP – A SMARTER RV EXPERIENCE

With Perfect Aire, it's easy to stay comfortable, efficient, and in control—all from your phone.

Full Control at Your Fingertips

- Adjust the temperature in each zone independently, anytime, anywhere.
- Switch between cooling, heating, fan, or auto modes with a tap.
- Rename zones to match your RV layout for easier management.

Smart Scheduling and Timers

- Create daily or weekly schedules to match your travel plans.
- Set one-time timers for quick, no-hassle comfort changes.
- Arrive to a perfectly cooled or heated space—no need to leave units running.

Built-in Self-Diagnostics

- Get instant alerts for filter cleanings or system checks.
- Catch small maintenance issues before they become major problems.
- Protect your investment with proactive system care.

Easy Sharing Access

- Give family members or guests their own app access—no lost remotes.
- Stay in control while letting others adjust their zones when needed.
- Perfect for shared RVs, rental units, or family trips.

Hands-Free Voice Control

- Connect to Amazon Alexa or Google Assistant for voice-activated comfort.
- Adjust temperatures, change modes, or turn systems on/off—without lifting a finger.

Customizable Automations

- Program your mini-split to react automatically to time, weather, or system status.
- Use easy pre-made routines or build your own custom automations.
- Maximize comfort and efficiency without constant adjustments.

In-App User Support

- Access a built-in user manual anytime you need help.
- Troubleshoot connection or system issues right from your phone.
- No need to keep track of paper manuals or installation guides.

Internet connection required.

Perfect Aire Brand Info

SINGLE-ZONE DUCTLESS MINI SPLIT SYSTEM

9,000 BTU | 115V



Units are sold separately. Requires communication cable and line set (sold separately).

FEATURES • Comes with a remote control with built-in room temperature sensor

- Turbo operation
- Heat pump for year-round comfort
- Self-diagnostic function
- Sleep mode
- Anti-cold air
- Hydrophilic Aluminum Fin & Golden Fin Protective Coatings
- Low Ambient Kit
- Auto Defrosting
- Refrigerant Leakage Detection
- System includes models 3PAMSH09A-SZW and 3PAMSH09A-SZO

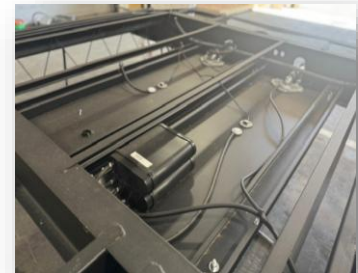
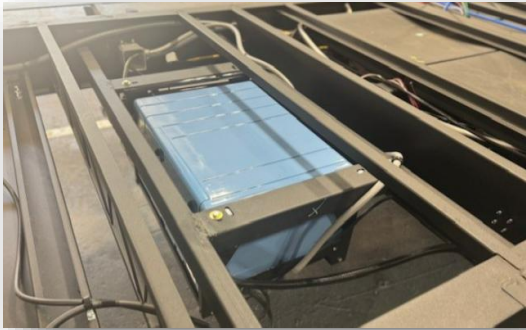
25' Quick Connect Line Set



Your lineset comes with 4 pieces:

1. Liquid line fitting for condenser
2. Suction line fitting for condenser
3. Liquid line
4. Suction line

Axiom RV Patent Pending Generator Location:



Why It Matters (Key Selling Points)

✓ Quieter Nights

- With the generator at the rear, noise and vibration are **moved away from the bedroom**, giving owners a quieter sleeping space.

✓ More Pass-Through Storage

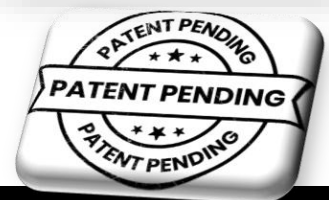
- Relocating the generator frees up the **entire front compartment**, creating some of the **largest pass-through storage in the industry**.
- Easier for customers to pack larger gear (coolers, chairs, totes, e-bikes).

✓ Safer, Smarter Fueling

- Shorter fuel lines reduce the need to run lines across the entire length of the RV.
- **Less chance of leaks, less maintenance, and improved efficiency.**

✓ Fuel Options

- **Vendetta (Standard):** Equipped with dual 30-gallon fuel tanks — industry-leading capacity for extended off-grid adventures.
- **Imperium (Optional):** Available with a 6kW LP gas generator — integrated for reliability and convenience.

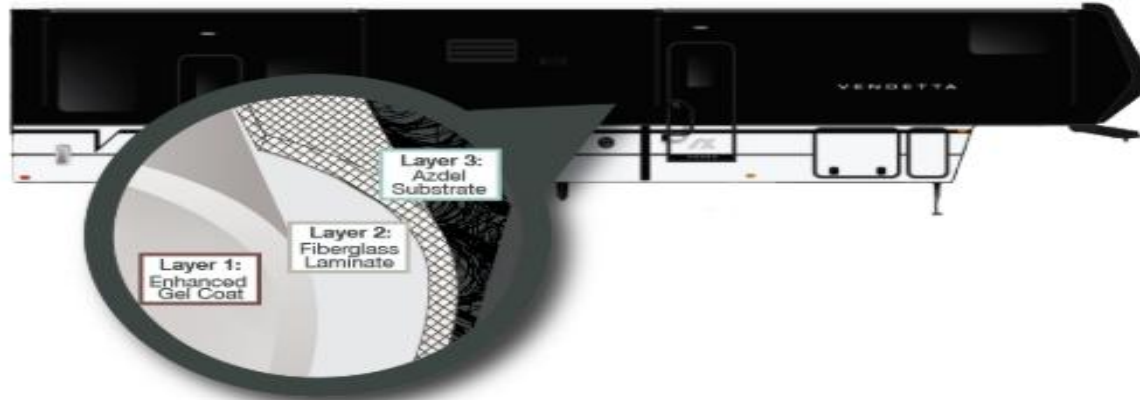


AXIOM RV NOBLE.ICON EXTERIOR

NOBLE.ICON fiberglass exterior sidewalls

- **Unmatched UV Resistance:** Enhanced performance gelcoat engineered to protect against harsh UV rays and extreme weather conditions
- **Mirror-Finish:** Ultra smooth, black, automotive look
- **Long Term Performance:** Sidewall will maintain 50% smoother appearance over time when compared to existing options
- **Optimized Lightweight Design:** 10% lighter sheetglass enhancing efficiency without compromising strength
- **Extreme Durability:** Fused to a composite substrate creating an exceptionally strong, wood + adhesive-free wall resistant to dents, dings, scratches, and abrasions

LEARN HOW TO CARE FOR YOUR SIDEWALLS AT:



features + benefits



ENHANCED
PERFORMANCE
GELCOAT



INTENSE
GLOSS



WITHSTANDS
ELEMENTS &
HARSH CLIMATES



ENHANCED
COLOR + GLOSS
RETENTION



AUTOMOTIVE
FINISH



IMPACT &
PUNCTURE
RESISTANT



OPTIMIZED
LIGHTWEIGHT
DESIGN



GLUE +
ADHESIVE
FREE



THICK
GELCOAT



WOOD FREE &
IMPERVIOUS
TO WATER

CRANE Composites

CARE AND MAINTENANCE TIPS FOR YOUR SIDEWALLS?
VISIT US AT WWW.EXTERIORRV CARE.COM



PROUDLY MANUFACTURED IN GOSHEN, INDIANA

features + benefits

KEY FEATURE

ADVANTAGES



Unmatched UV Resistance

- Enhanced performance gelcoat
- Engineered to protect against harsh UV rays and extreme weather conditions
- Over 500% improvement in color and gloss retention vs standard gelcoat



Mirror-like Surface Appearance

- Ultra smooth, black, automotive look
- Mirror quality distinction of image
- 50% improvement over standard sheetglass



Long Term Performance

- Sidewall will maintain >50% smoother appearance over time when compared to standard sheetglass
- Superior resistance to extreme heat and temperature changes



Optimized Lightweight Design

- 10% lighter sheetglass enhancing efficiency without compromising strength



Extreme Durability

- Wood free; Not susceptible to water damage
- Adhesive free; Vacuum bonded & fused substrate
- Resistant to dents, dings, scratches, and abrasions

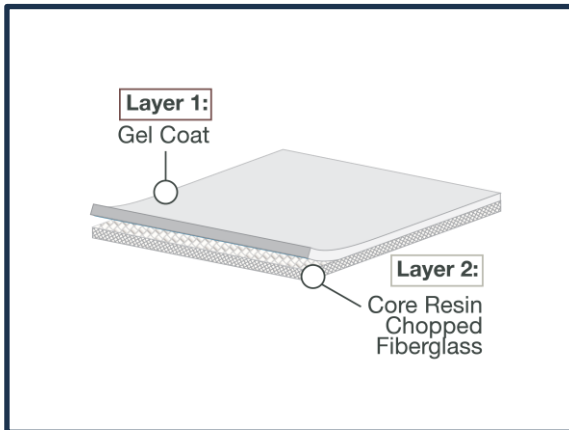
AXIOM RV NOBLE.ICON EXTERIOR

AXIOM walls are using top of the line sheetglass featuring a vacuum bonded lamination process that eliminates the need for glue or adhesives

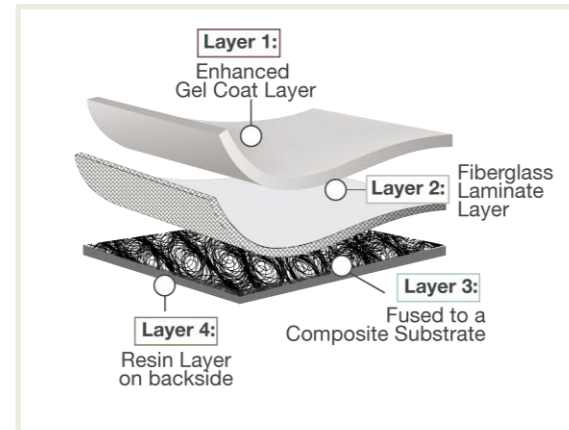
COMPETITION



COILED FIBERGLASS PINCH ROLLED LAMINATION




AXIOM NOBLE.ICON VACUUM BONDED LAMINATION




Models in Comparison

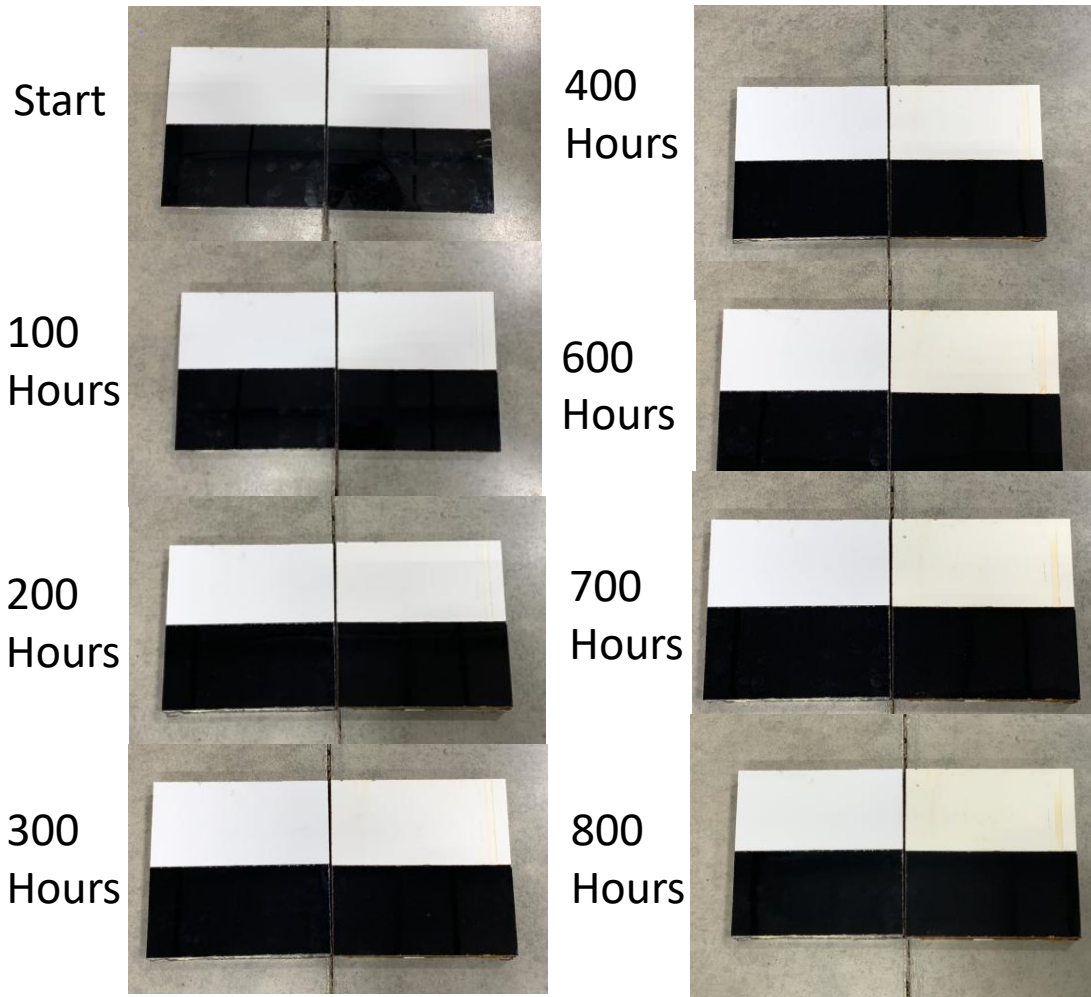
Model Name	Noble ICON vs Other FIBERGLASS	Sheet Fiberglass vs Coil Fiberglass	Steel Frame vs Aluminum Frame Construction
CYCLONE	✗	✗	✗
VOLTAGE	✗	✗	✗
MODEL G	✗	✗	✗
MOMENTUM	✗	✗	✗
SEISMIC	✗	✗	✗
TANDARA	✗	✗	✗
DRV FULL HOUSE	✗	✓	✗
ATC	✗	✗	✗
LUX	✗	✓	✗

AXIOM RV NOBLE.ICON EXTERIOR

NOBLE.ICON features + benefits

KEY FEATURE	ADVANTAGES
 Unmatched UV Resistance	<ul style="list-style-type: none"> Enhanced performance gelcoat Engineered to protect against harsh UV rays and extreme weather conditions Over 500% improvement in color and gloss retention vs standard gelcoat
Mirror-like Surface Appearance	<ul style="list-style-type: none"> Ultra smooth, black, automotive look Mirror quality distinction of image 50% improvement over standard sheetglass
Long Term Performance	<ul style="list-style-type: none"> Sidewall will maintain >50% smoother appearance over time when compared to standard sheetglass Superior resistance to extreme heat and temperature changes
Optimized Lightweight Design	<ul style="list-style-type: none"> 10% lighter sheetglass enhancing efficiency without compromising strength
Extreme Durability	<ul style="list-style-type: none"> Wood free; Not susceptible to water damage Adhesive free; Vacuum bonded & fused substrate Resistant to dents, dings, scratches, and abrasions

AXIOM RV NOBLE.ICON EXTERIOR TESTING



Proven Durability – Noble.Icon Exterior Testing

Axiom RV partnered with a **3rd-party testing facility** to validate the long-term durability of our Noble.Icon exterior finish.

• **800 Hours of Accelerated UV Testing**
Equivalent to **10 years of real-world sun and weather exposure.**

• Results Speak for Themselves

The Noble.Icon exterior held its color, gloss, and structural integrity throughout the entire testing period.

• What This Means for You

- Better protection against fading and chalking.
- A longer-lasting, premium look.
- Lower maintenance and greater resale value.

AXIOM RV DOUBLE SIDED AZDEL:

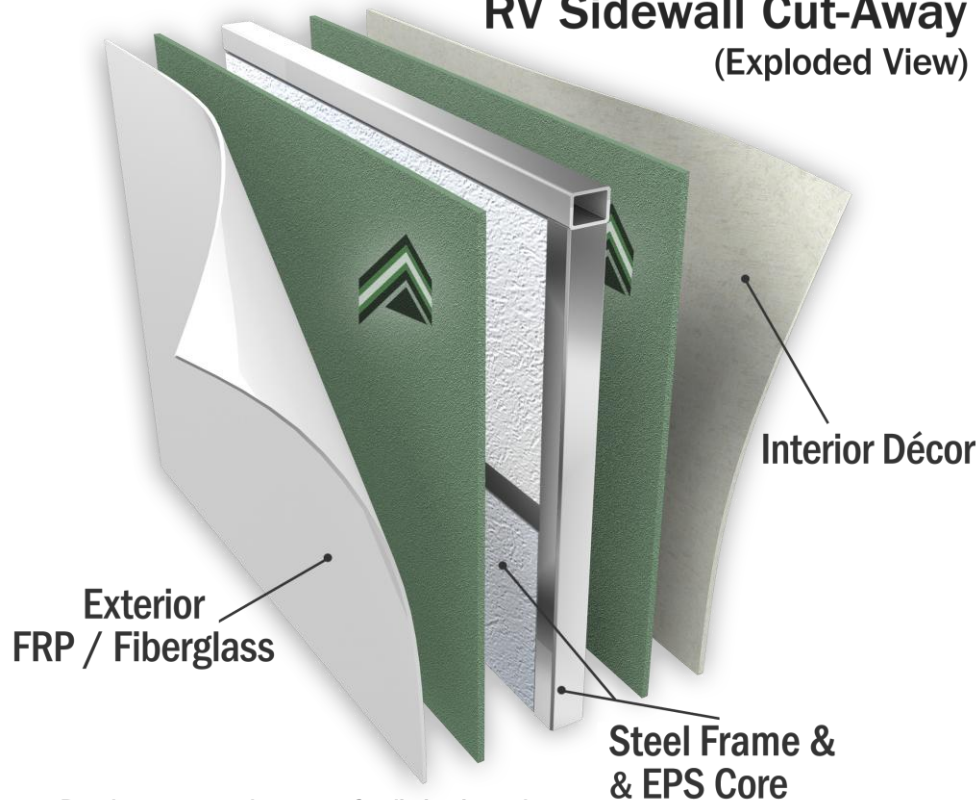


RV COMPOSITE PANELS

AZDEL

ONBOARD®

RV Sidewall Cut-Away
(Exploded View)



Panels represented as green for distinction only



Tires & Wheel Torque

TREDIT MOBILE APP

MANAGE YOUR TRAILER TIRES

TPMS, WARRANTY, ROADSIDE ASSISTANCE, & MORE!



The Tredit App is a comprehensive solution for trailer tire management and roadside assistance - designed to provide peace of mind for both experienced travelers, and weekend adventurers.

- ▶ Trailer Organization
- ▶ Warranty Management
- ▶ TPMS Integration
- ▶ Roadside Assistance

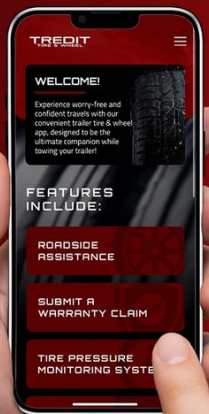
FREE DOWNLOAD!



Download on the App Store



GET IT ON Google Play



APP FEATURES:

ROADSIDE ASSISTANCE

WHAT IS THE TREDIT ADVANTAGE PROGRAM?

Through the Tredit Advantage™ Program, you gain access to a nationwide network of qualified roadside assistance professionals. This provides you with the fastest, safest, and most innovative roadside services, giving you the freedom to travel with complete confidence and peace of mind!

REIMBURSEMENT PROCESS:

- Download the Tredit App from your Apple App/Google Play Store.
- Login, and tap on "Roadside Assistance" from the homescreen.
- Tap on "Schedule a Roadside Service" button, and select a roadside service.
- Enter your information, receive an up-front estimate for the roadside service, then dispatch the request.
- Once the roadside service is completed, pay for the service and keep the receipt.
- Contact Tredit Tire & Wheel for reimbursement (up to \$150) within 30-days of roadside service event.
- Email: warranty@tredittire.com
- Phone: (855)-887-3348

4-YEARS

OF ROADSIDE ASSISTANCE COVERAGE!

WARRANTY MANAGEMENT

- ▶ Submitting warranty claims is now even easier through the Tredit App!
- ▶ Easily fill-out claim form, upload photos of your tire/wheel, and submit for quick review - all through the Tredit App!
- ▶ Receive guidance from our warranty department on getting your tires repaired or replaced.

TIRE REGISTRATION

- ▶ In the rare occurrence of a safety recall, receive immediate and direct notifications to ensure the prompt replacement of your tires.

TRAILER ORGANIZATION

- ▶ App automatically displays remaining warranty and roadside assistance eligibility, eliminating the need for manual tracking and ensures up-to-date information about tire protection status.



TIRE CHANGE

CAR LOCKOUT

KEY REPLACEMENT

TOWING

JUMP START

GAS DELIVERY

TPMS INTEGRATION

- ▶ Pair Bluetooth Tire Pressure Monitoring System (TPMS) sensors to trailer tires.
- ▶ Easily monitor tire pressure and tire temperature in real-time!
- ▶ Receive notifications through your phone when tire PSI & tire temperatures are at unsafe levels- keeping you safe while travel down the road!

FOR MORE INFO ON THE TREDIT APP

SCAN QR CODE!



Guarantees. Simplified.

1st YEAR COVERAGE ON ALL TIRES & WHEELS!

- In addition to our standard warranty, we also provide our Guarantees Simplified program. Sign up for our Guarantees Simplified program through our website, and rest easy knowing you have extra coverage for your tires & wheels!
- If your product is taken out of service for reasons not included in the warranty within the first year, you can benefit from our replacement and/or reimbursement program for all registered products.
- To register, visit www.tredittire.com/guarantees-simplified Or, scan QR code!

REGISTRATION NUMBER:

E7432645



CONTACT INFO:

Phone: (855)-887-3348

Email: Warranty@tredittire.com

Locations: Elkhart, IN (Corporate) - Athens, GA - Arlington, TX - Plant City, FL
York, PA - Boardman, OR - Ankeny, IA



RAINIER ST ALL-STEEL

215/75R17.5"



ABOUT PRODUCT

Elevate your towing experience with our premium commercial highway trailer tire, which comes with an 8-year limited warranty and roadside assistance for your convenience. The Rainier ST ALL-STEEL tire is specifically crafted to handle the increased demands of today's RV's & cargo units. Featuring a highway tread pattern and a refined sidewall design, these tires combine exceptional durability with impressive load capacity.

KEY FEATURES:

- ▶ **DURABLE ALL-STEEL SIDEWALL**
Designed for Trail Use and High Carrying Capacity.
- ▶ **HIGHWAY TREAD PATTERN**
For Smooth Towing.
- ▶ **DEEP TREAD DEPTH**
For Long On-Road Service.
- ▶ **STONE EJECTORS IN TREAD**
Helps to Reduce Debris Retention.



8-YEAR LIMITED WARRANTY!

Tire Size	Load Range/Ply	Section Width	Overall Diameter	Max Load Capacity	Operating Inflation	Speed Rating
215/75R17.5	J/18	8.3"	30.2"	4,805 LBS.	125 PSI	M-81 MPH

TREDIT TIRE & WHEEL

TIRE & WHEEL WARRANTY

THANK YOU FOR TRUSTING US ON YOUR JOURNEY!

- We're proud to have this unit equipped with the industry leading warranty coverage for trailer tires, wheels, and related accessories.

- For full warranty details on your tire & wheel assemblies, please visit:
www.tredittire.com/product-warranty

Or, scan QR code!



AXIOM TOP TEC SALE FEATURES

1. PWRPRO Control System
2. 2000K Hard Wire Inverter
3. Transfer Switch
4. 120V Distribution Panel
5. Converter/Charger
6. 50AMP Transfer Switch



Mobile App:

A strong and robust mobile app available for both Apple and Android devices.

App Features:

- Full voice command availability
- Proactive notifications
- Customized based on RV owner's preferences
- Long range of use - up to 300'
- OTA updates for future product enhancements
- Safe operation of slides & awnings

PWRPRO Available Voice Commands



Hardware Capabilities:

- **Bluetooth Connectivity:**
 - Single device control - 8 device memory
- **Motor Driven System Controls:**
 - Mobile App & Control Panel Only
 - 2 Awnings & 3 Slide Rooms
- **Lighting Controls:**
 - Voice, Mobile App, & Control Panel
 - 4 Independent Light Zones:
 - On/Off & Fully Dimmable
- **Appliance Controls:**
 - Voice, Mobile App, & Control Panel
 - Water Pump
 - Gas & Electric Water Heater w/ DSI Fault
- **Monitoring and Notifications:**
 - Voice, Mobile App, & Control Panel
 - Holding Tanks
 - 1 Fresh, 2 Black, & 3 Gray
 - 1 Battery System



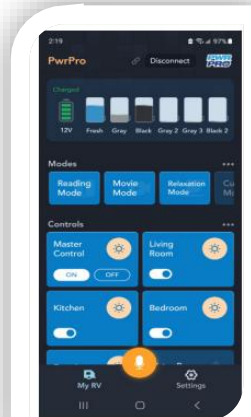
Power Pro® Reference Videos:



Voice Tutorial



System Features



Other Controls & Monitoring

- **Water Pump Control**
- **Water Heater Control:**
 - Gas
 - DSI Fault
 - Electric
- **Battery Status:**
 - Monitoring & Notifications
- **Holding Tank Levels:**
 - Monitoring & Notification



Lighting Controls

- **Light Control by Zone Number**
- **Light Control by Name:**
 - Bedroom
 - Bathroom
 - Living Room
 - Kitchen
 - Exterior
- **Mood/Scenario Lighting:**
 - Preset & Customizable

Top 5 Reasons Axiom Pass-Through Storage Leads the Industry

1. Massive Storage Capacity

- True full pass-through design with wide-open space, maximizing room for gear, tools, and adventure essentials.

2. Optional Pull-Out Tray

- Heavy-duty sliding tray option for easy access to everything, no matter how far back it's stored.
- Eliminates bending, crawling, or unloading other items first.

3. Front Ramp Door Option

- Innovative optional front ramp door allows direct, drive-up access.
- Perfect for loading larger items like coolers, bikes, or bulky gear with ease.

4. Automotive-Grade Finish

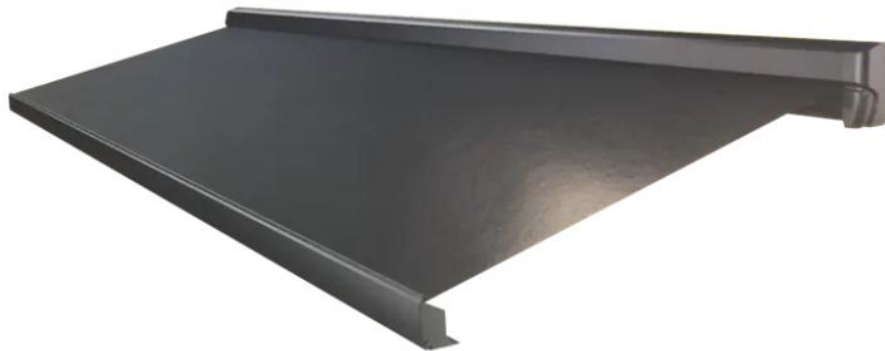
- Premium automotive-style finish gives the storage bay a sleek, professional look.
- Durable, easy-to-clean, and built to stand up to years of use.

5. Smart Serviceability

- All wiring is **color-coordinated** for quick identification and faster diagnostics.
- Sliding access panels make it simple for owners and technicians to reach components, reducing downtime.



20FT 18FT & 8FT GIRARD GG750 RV AWNING



Features

- Lightweight, compact, lateral-arm awning for RVs (50-110 lbs.)
- No external ground support needed
- 12V powered or manual crank options
- Fully enclosed awning
- Available from 5' to 20'
- Full 8' projection (on sizes 12' and up)
- Black or white frames
- Vinyl fabric or O'Bravia® woven polyester fabric

GG750 RV awning options include:

- Ignition lockout to retract awning when the vehicle is started
- Handheld remote control
- Wireless wall switch
- 12V motion sensor
- Multiplex integration

AXIOM SOUND SYSTEM



PARTYBOX CLUB 120

Portable party speaker

POWERFUL
BASS
BOOST

Pure party energy

The JBL PartyBox Club 120 turns any space to party, and vibe. Powerful JBL Pro Sound fills the air while an entrancing lightshow of starry lights, cool light trails, and strobe effects syncs to your beat. Instantly pair any Bluetooth device and stream your favorite party playlist, or use the mic and guitar inputs to share your own sound. Either way, you can steer the party's flow with fun interactive party effects using the JBL PartyBox app. A folding ergonomic handle makes the PartyBox Club 120 easy to take with you anywhere, and the splash-proof construction means it won't be troubled by a little rain. It delivers up to 12 hours of playtime—and if the party's still flowing by then, just swap out the replaceable battery and keep the music and lights going strong. For an even bigger time, stereo pair two JBL PartyBox Club 120s for a wider soundstage, or use the JBL PartyBox app to connect multiple JBL Auracast-enabled speakers wirelessly. Roll up to the party with the JBL PartyBox Club 120.



Features

- ▶ Powerful JBL Pro Sound
- ▶ Futuristic lightshow
- ▶ Up to 12 hours of play time
- ▶ Foldable handle
- ▶ Splash proof
- ▶ AI Sound Boost
- ▶ Multi-speaker connection by Auracast™
- ▶ Dual Mic & Guitar Inputs
- ▶ JBL PartyBox app
- ▶ Made in part with recycled materials

